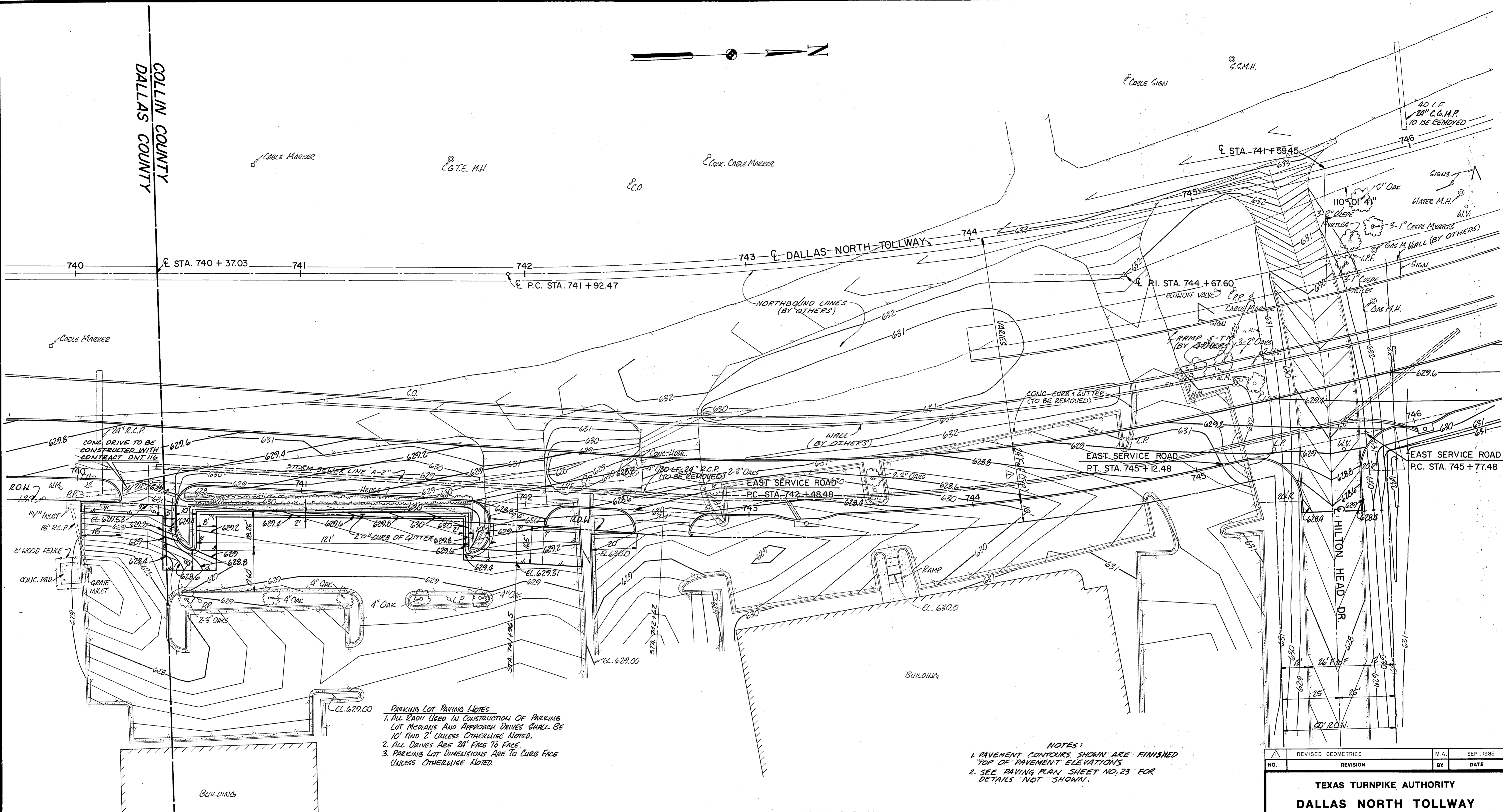




COLLIN COUNTY  
DALLAS COUNTY



**PARKING LOT PAVING NOTES**

1. ALL EARTH USED IN CONSTRUCTION OF PARKING LOT MEDIANS AND APPROACH DRIVES SHALL BE 10' AND 2' UNLESS OTHERWISE NOTED.
2. ALL DRIVES ARE 24' FACE TO FACE.
3. PARKING LOT DIMENSIONS ARE TO CURB FACE UNLESS OTHERWISE NOTED.

**NOTES:**

1. PAVEMENT CONTOURS SHOWN ARE FINISHED TOP OF PAVEMENT ELEVATIONS
2. SEE PAVING PLAN, SHEET NO. 23 FOR DETAILS NOT SHOWN.

INTERSECTION PAVING AND GRADING PLAN  
DALLAS NORTH TOLLWAY AT HILTON HEAD DRIVE

**BENCH MARK #12**  
Railroad Spike In South Side Of Pole (15N 1W 99)  
50' North Of Addison Road-Trinity Mills Road  
Intersection, 500' West Of Dallas Parkway.  
Elevation: 638.11

REVISED GEOMETRICS		M.A.	SEPT 1985
NO.	REVISION	BY	DATE

TEXAS TURNPIKE AUTHORITY  
DALLAS NORTH TOLLWAY

GRADING PLAN  
HILTON HEAD DR. INTERSECTION

SHIMEK, JACOBS & FINKLEA  
CONSULTING ENGINEERS  
Dallas, Texas

SECTION VIII

DRAWN	G.A.D.	DATE	5-83	DESIGNED	M.A.	DATE	5-83
CHECKED	E.W.H.	DATE	5-83	SCALE	1"=20'		

AS BUILT PLANS