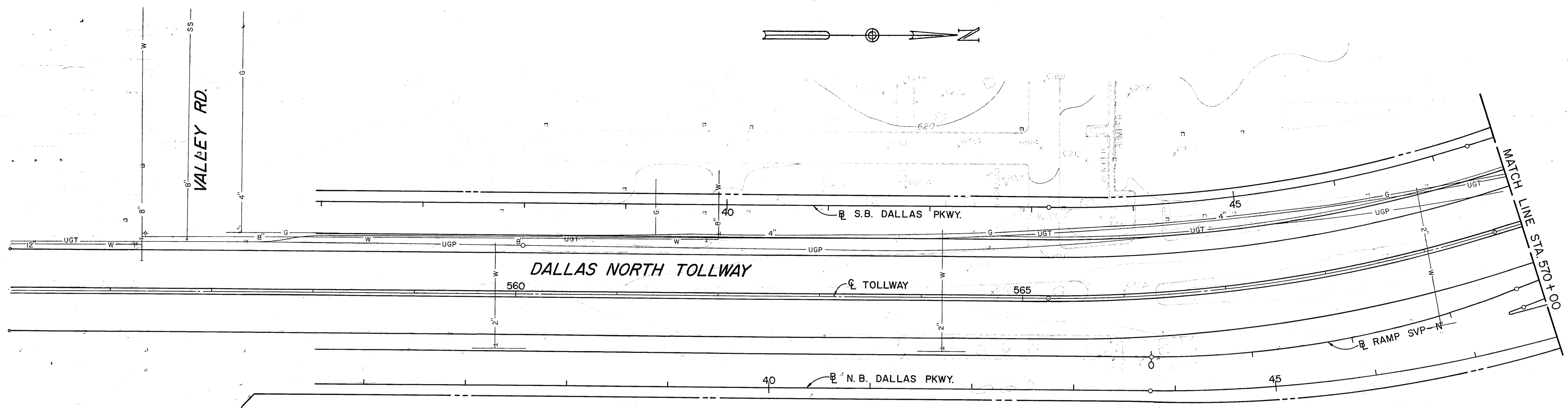




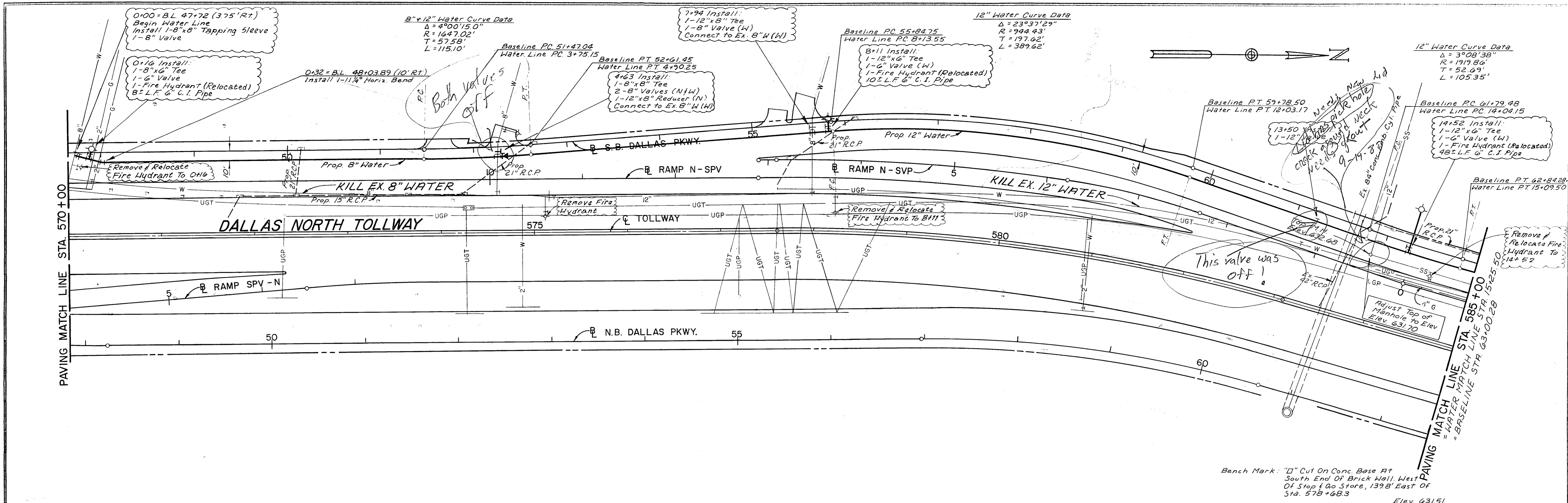
VALLEY RD.

SPRING

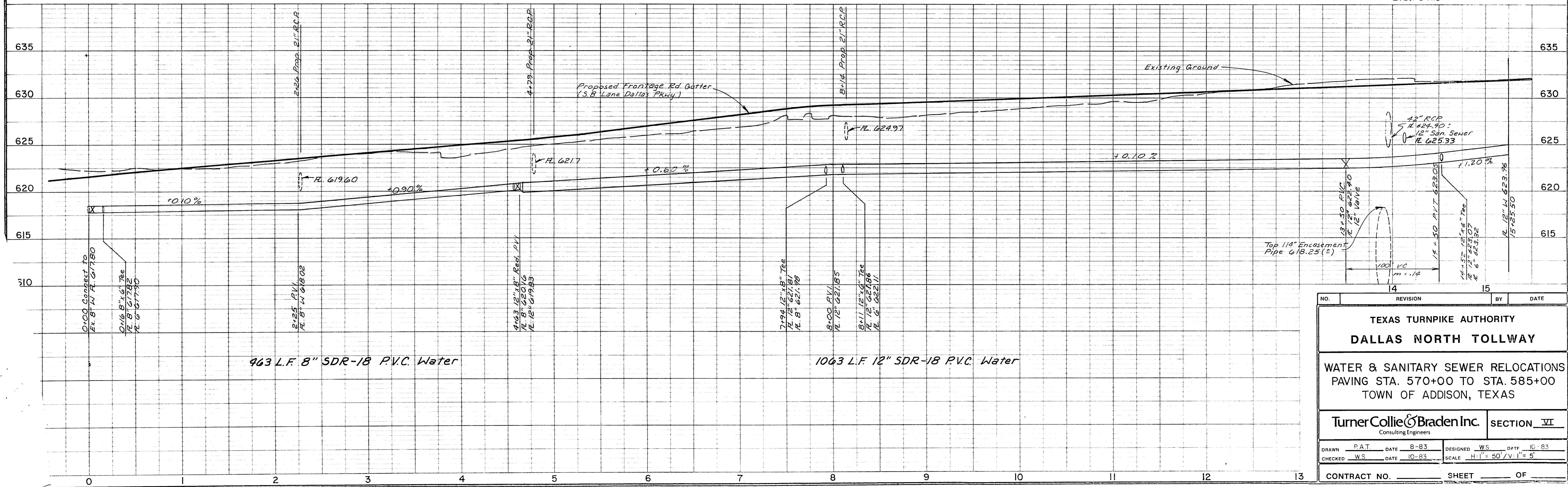


Bench Mark "B" Cut On S.E. Cor. Of South Entrance Drive To The Pacific Center, 150.4' East Of Sta 564+02.02 Elev 625.76

NO.	REVISION	BY	DATE
<b>TEXAS TURNPIKE AUTHORITY</b>			
<b>DALLAS NORTH TOLLWAY</b>			
WATER & SANITARY SEWER RELOCATIONS PAVING STA. 557+28 TO STA. 570+00 TOWN OF ADDISON, TEXAS			
TurnerCollie&Braden Inc. <small>Consulting Engineers</small>			SECTION <u>VI</u>
DRAWN	PAT	DATE	8-83
CHECKED		DATE	
DESIGNED		DATE	
SCALE		SCALE	
CONTRACT NO.		SHEET ____ OF ____	



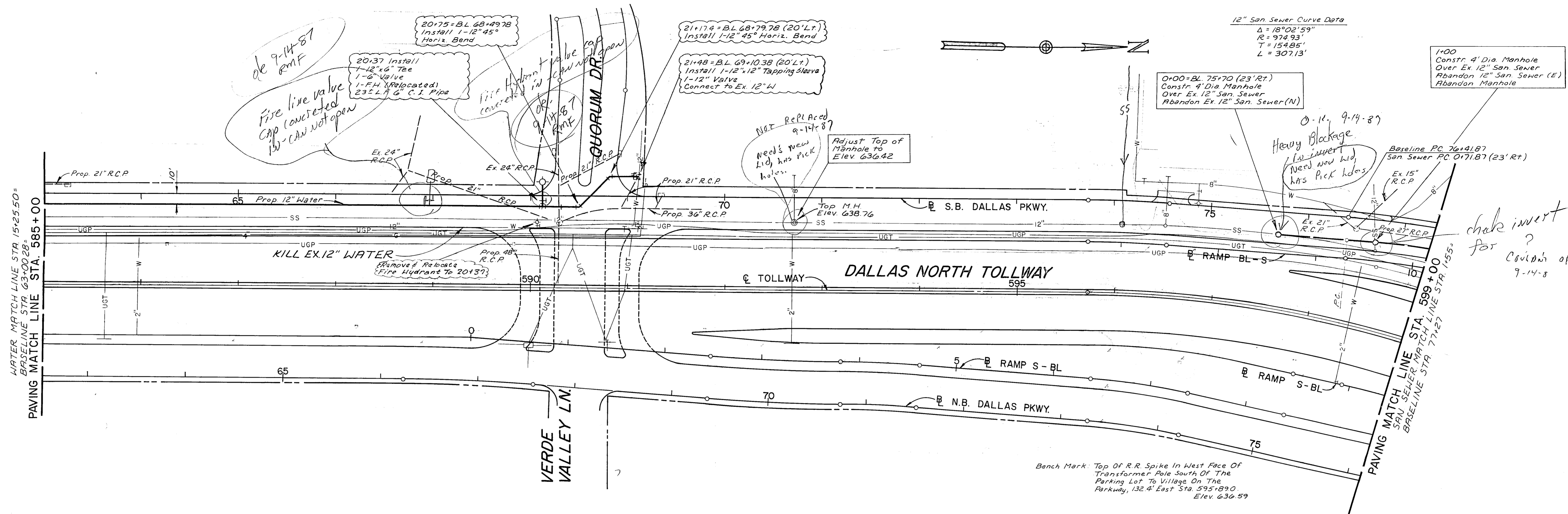
Bench Mark: "I" Cut On Conc. Base At South End Of Brick Wall, West Of Stop & Go Store, 139' East Of Sta. 578+68.3 Elev. 631.51



NO.	REVISION	BY	DATE
<b>TEXAS TURNPIKE AUTHORITY</b> <b>DALLAS NORTH TOLLWAY</b>			
<b>WATER &amp; SANITARY SEWER RELOCATIONS</b> <b>PAVING STA. 570+00 TO STA. 585+00</b> <b>TOWN OF ADDISON, TEXAS</b>			
<b>Turner Collie &amp; Braden Inc.</b> Consulting Engineers			<b>SECTION VII</b>
DRAWN	P.A.T.	DATE	8-83
DESIGNED	W.S.	DATE	10-83
CHECKED	W.S.	DATE	10-83
SCALE		H. 1" = 50' / V. 1" = 5'	
CONTRACT NO.		SHEET OF	

WATER MATCH LINE STA. 15+25.50 =  
 BASELINE STA. 63+00.28 =  
 PAVING MATCH LINE STA. 585+00

PAVING MATCH LINE STA. 599+00  
 SAN SEWER MATCH LINE STA. 155+00  
 BASELINE STA. 77+27



12" San Sewer Curve Data  
 $\Delta = 18^{\circ}02'59''$   
 $R = 974.93'$   
 $L = 307.13'$

1+00  
 Constr. 4' Dia. Manhole  
 Over Ex. 12" San Sewer  
 Abandon 12" San Sewer (E)  
 Abandon Manhole

21+17.4 = B.L. 68+79.78 (20' Lt.)  
 Install 1-12" 45° Horiz. Bend

21+48 = B.L. 69+10.38 (20' Lt.)  
 Install 1-12" 12" Tapping Sleeve  
 1-12" Valve  
 Connect to Ex. 12" W

20+37 Install  
 1-12" x 6" Tee  
 1-6" Valve  
 1-FH (Relocated)  
 23" L.A.G. C.I. Pipe

de 9-14-87  
 Fire line valve  
 cap concreted  
 15" can not open

NOT REPLACED  
 9-14-87  
 Needs new  
 Lid has PICK  
 holes.  
 Adjust Top of  
 Manhole to  
 Elev. 636.42

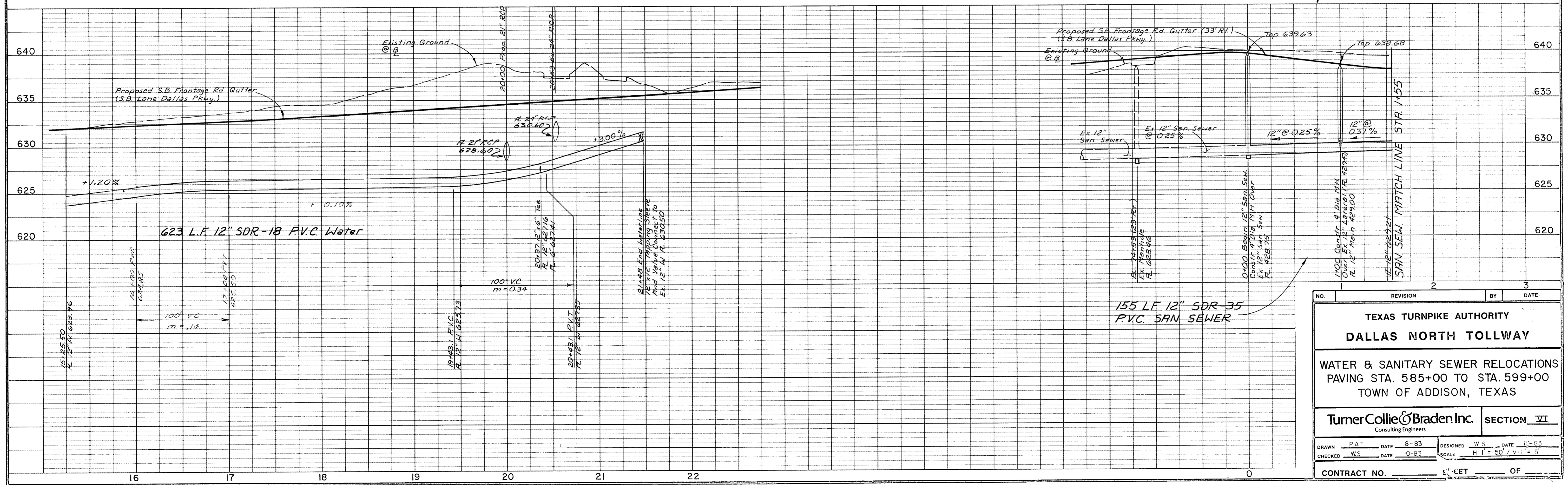
0+00 = B.L. 75+70 (23' Rt.)  
 Constr. 4' Dia. Manhole  
 Over Ex. 12" San Sewer  
 Abandon Ex. 12" San Sewer (N)

0-11. 9-14-87  
 Heavy Blockage  
 In Invert  
 Need new lid  
 has PICK holes

Baseline PC 76+41.87  
 San Sewer PC 0+71.87 (23' Rt.)

check invert  
 for  
 condition open  
 9-14-87

Bench Mark: Top Of R.R. Spike In West Face Of  
 Transformer Pole South Of The  
 Parking Lot To Village On The  
 Parkway, 132.4' East Sta. 595+89.0  
 Elev. 636.59



NO.	REVISION	BY	DATE

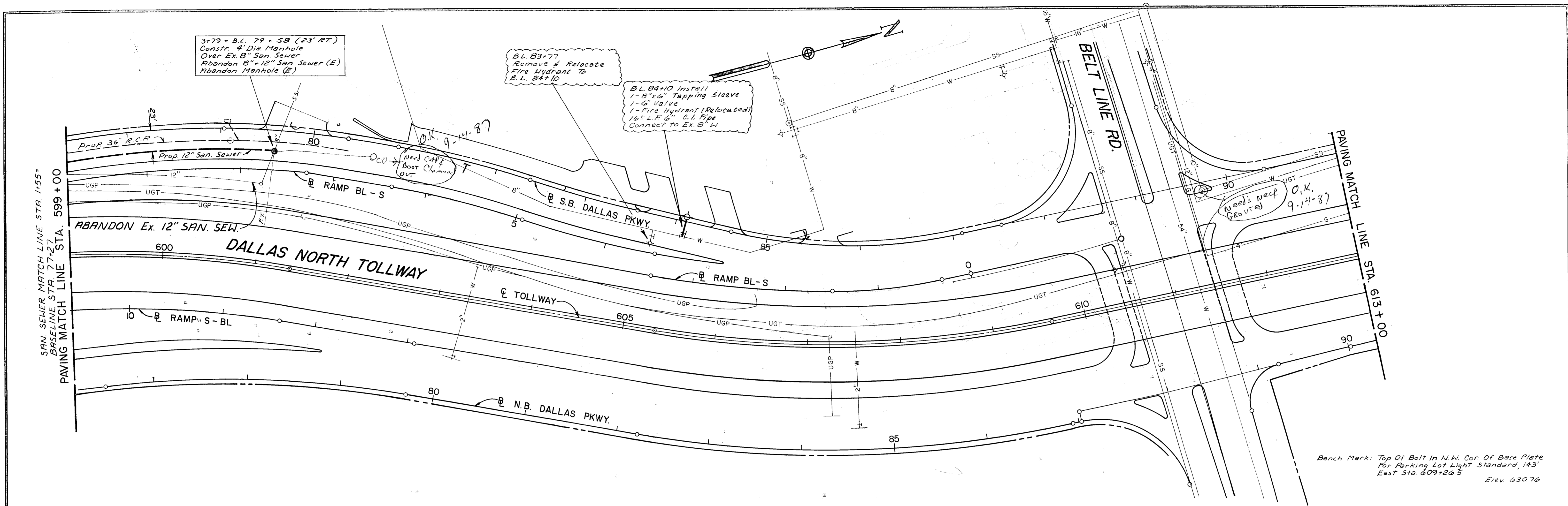
**TEXAS TURNPIKE AUTHORITY**  
**DALLAS NORTH TOLLWAY**

WATER & SANITARY SEWER RELOCATIONS  
 PAVING STA. 585+00 TO STA. 599+00  
 TOWN OF ADDISON, TEXAS

**TurnerCollie & Braden Inc.** SECTION VI  
 Consulting Engineers

DRAWN PAT	DATE 8-83	DESIGNED W.S.	DATE 10-83
CHECKED W.S.	DATE 10-83	SCALE H. 1" = 50' / V. 1" = 5'	

CONTRACT NO. \_\_\_\_\_ SHEET \_\_\_\_\_ OF \_\_\_\_\_



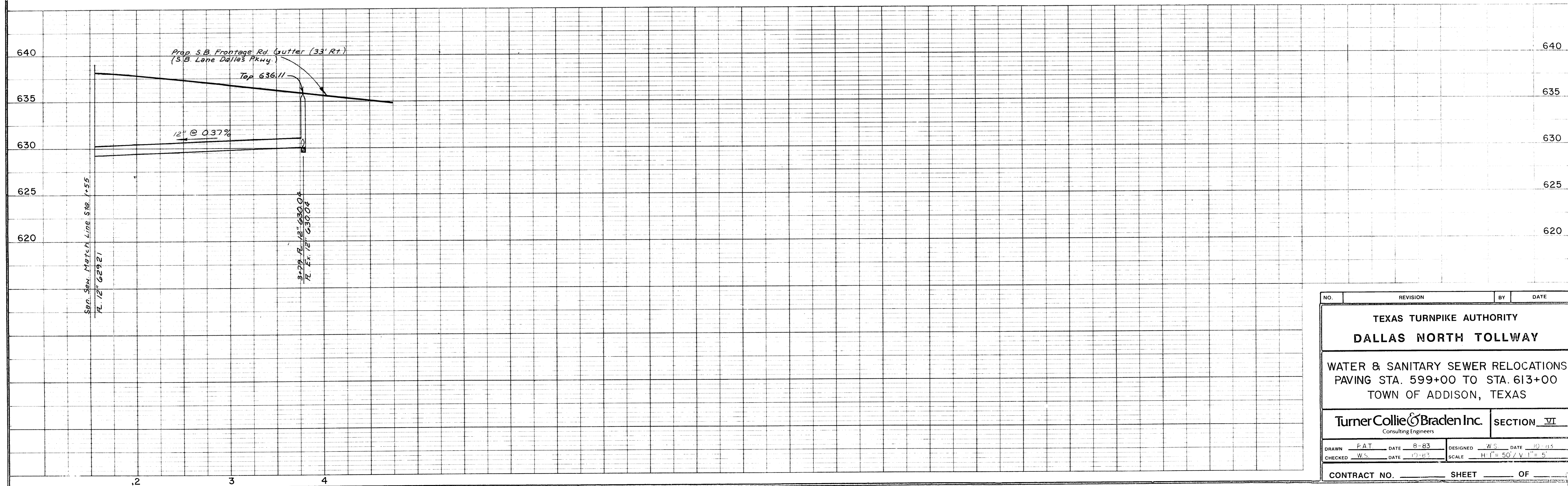
3+79 = B.L. 79 + 58 (23' RT.)  
 Constr. 4' Dia. Manhole  
 Over Ex. 8" San Sewer  
 Abandon 8" x 12" San Sewer (E)  
 Abandon Manhole (E)

B.L. 83+77  
 Remove & Relocate  
 Fire Hydrant To  
 B.L. 84+10

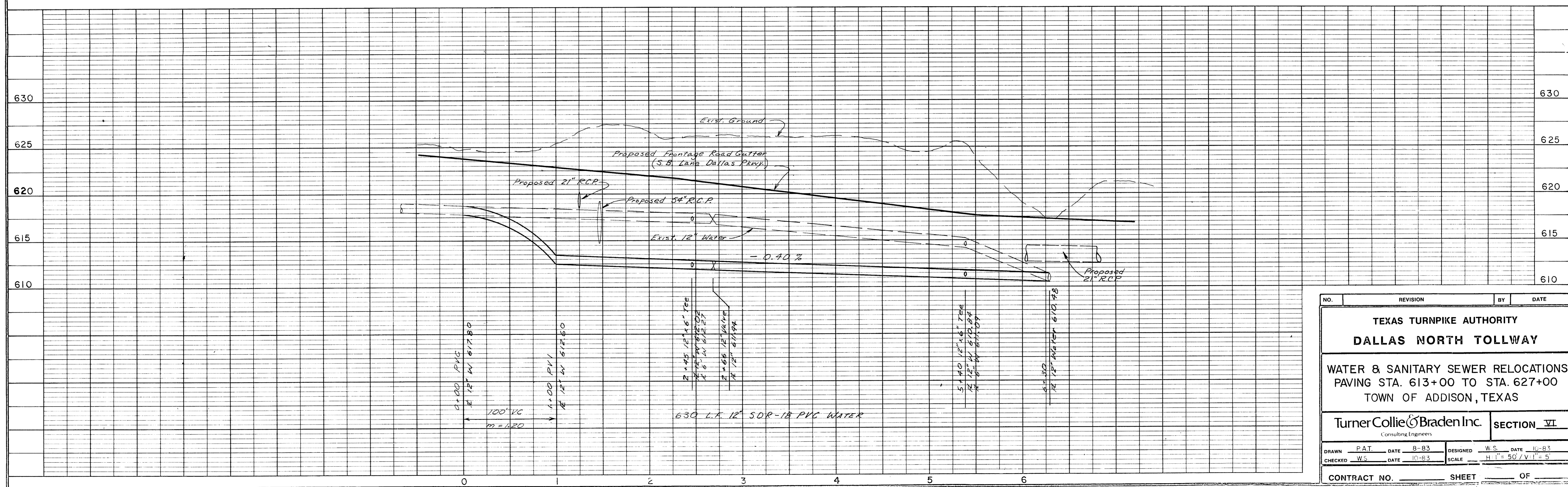
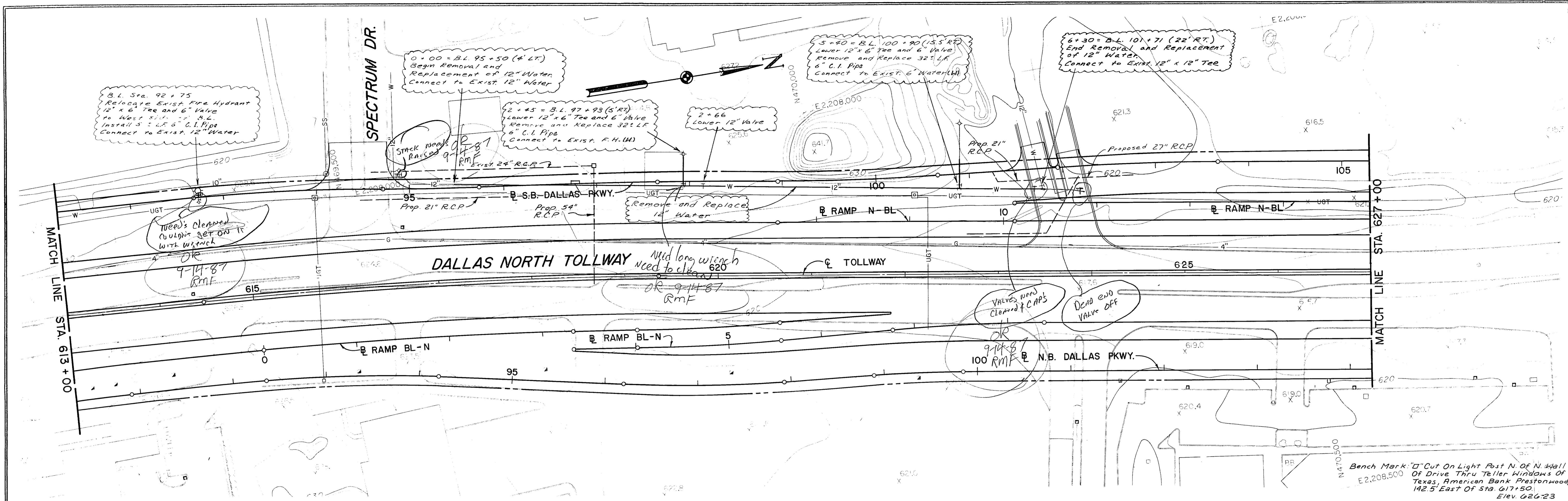
B.L. 84+10 Install  
 1- 8"x6" Tapping Sleeve  
 1- 6" Valve  
 1- Fire Hydrant (Relocated)  
 16" L.F. 6" C.I. Pipe  
 Connect to Ex. 8" W

Need's neck  
 GROUTED  
 O.K.  
 9-14-87

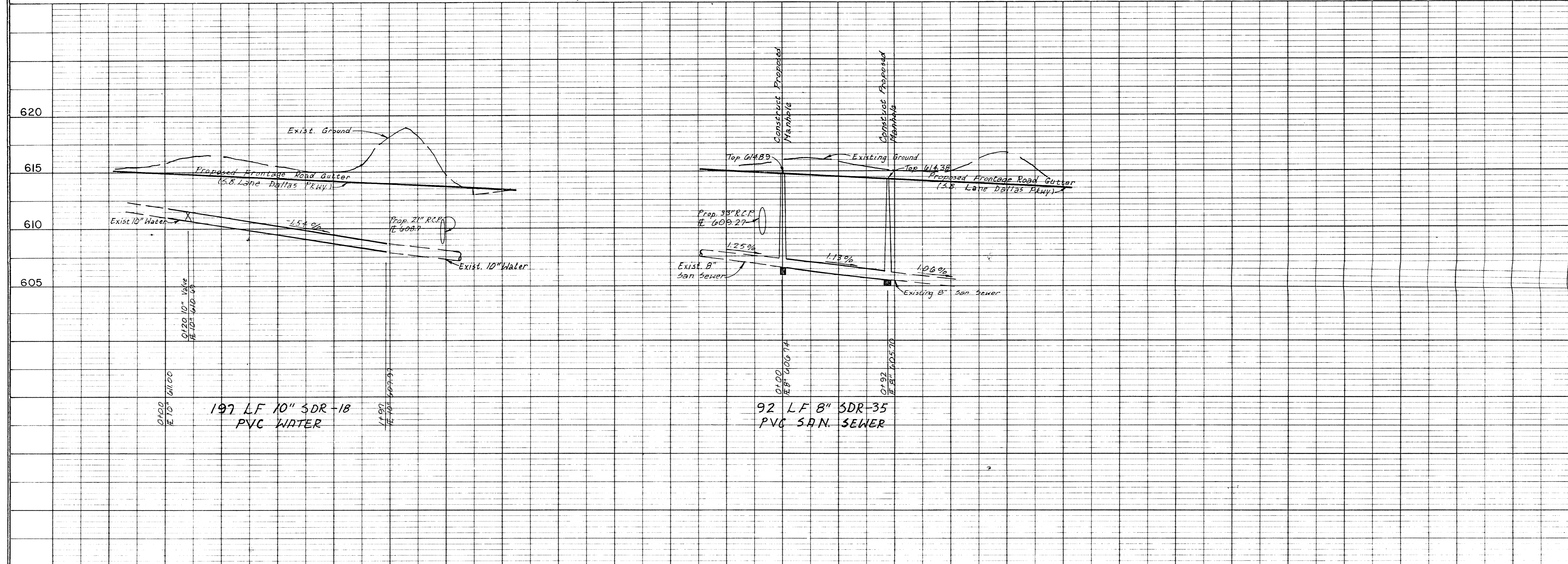
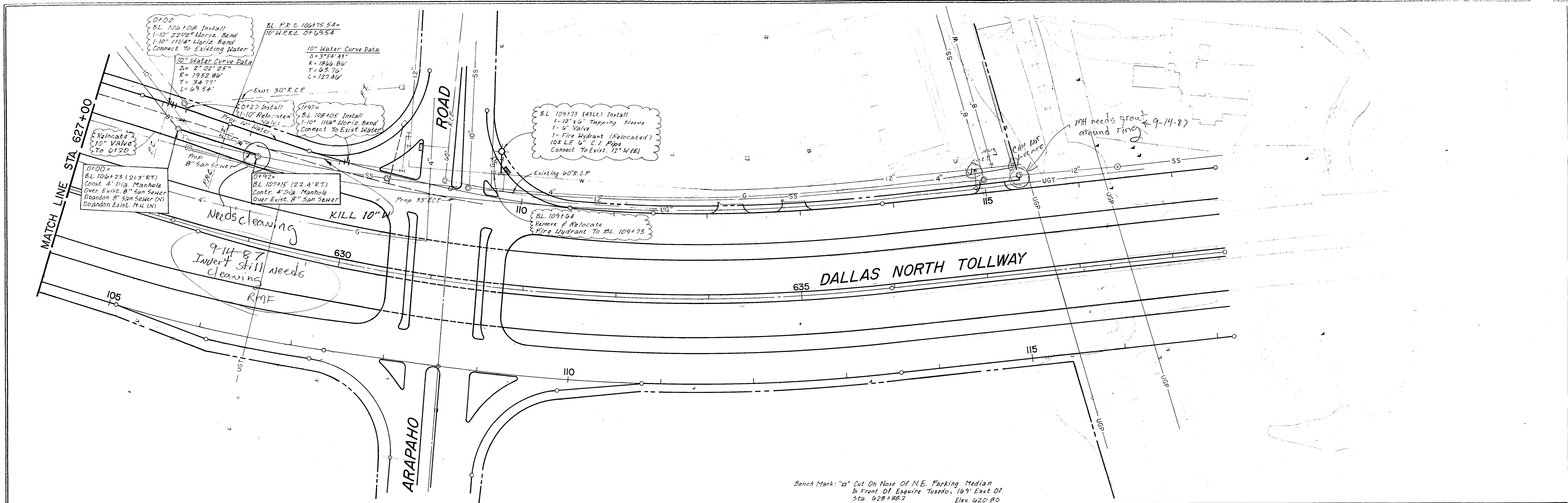
Bench Mark: Top Of Bolt In N.W. Cor. Of Base Plate  
 For Parking Lot Light Standard, 143'  
 East Sta 609+26.5 ELEV 630.76



NO.	REVISION	BY	DATE
<b>TEXAS TURNPIKE AUTHORITY</b> <b>DALLAS NORTH TOLLWAY</b>			
<b>WATER &amp; SANITARY SEWER RELOCATIONS</b> <b>PAVING STA. 599+00 TO STA. 613+00</b> <b>TOWN OF ADDISON, TEXAS</b>			
<b>TurnerCollie &amp; Braden Inc.</b> <small>Consulting Engineers</small>			<b>SECTION VI</b>
<small>DRAWN</small> FAT <small>DATE</small> 8-83	<small>DESIGNED</small> W.S. <small>DATE</small> 10-83		
<small>CHECKED</small> W.S. <small>DATE</small> 10-83	<small>SCALE</small> H:1"=50' / V:1"=5'		
<small>CONTRACT NO.</small> _____ <small>SHEET</small> _____ <small>OF</small> _____			



NO.	REVISION	BY	DATE
<b>TEXAS TURNPIKE AUTHORITY</b> <b>DALLAS NORTH TOLLWAY</b>			
<b>WATER &amp; SANITARY SEWER RELOCATIONS</b> <b>PAVING STA. 613+00 TO STA. 627+00</b> <b>TOWN OF ADDISON, TEXAS</b>			
Turner Collie & Braden Inc.			SECTION VI
Consulting Engineers			
DRAWN	PAT	DATE 8-83	DESIGNED W.S. DATE 10-83
CHECKED	WS	DATE 10-83	SCALE H. 1" = 50' / V. 1" = 5'
CONTRACT NO.		SHEET OF	



NO.	REVISION	BY	DATE
<b>TEXAS TURNPIKE AUTHORITY</b> <b>DALLAS NORTH TOLLWAY</b>			
<b>WATER &amp; SANITARY SEWER RELOCATIONS</b> <b>PAVING STA. 627+00 TO STA. 640+50</b> <b>TOWN OF ADDISON, TEXAS</b>			
Turner Collie & Braden Inc. <small>Consulting Engineers</small>			SECTION VI
DRAWN PAT	DATE 8-87	DESIGNED W.S.	DATE 10-83
CHECKED W.S.	DATE 10-82	SCALE H 1" = 50' / V 1" = 5'	
CONTRACT NO.		SHEET OF	