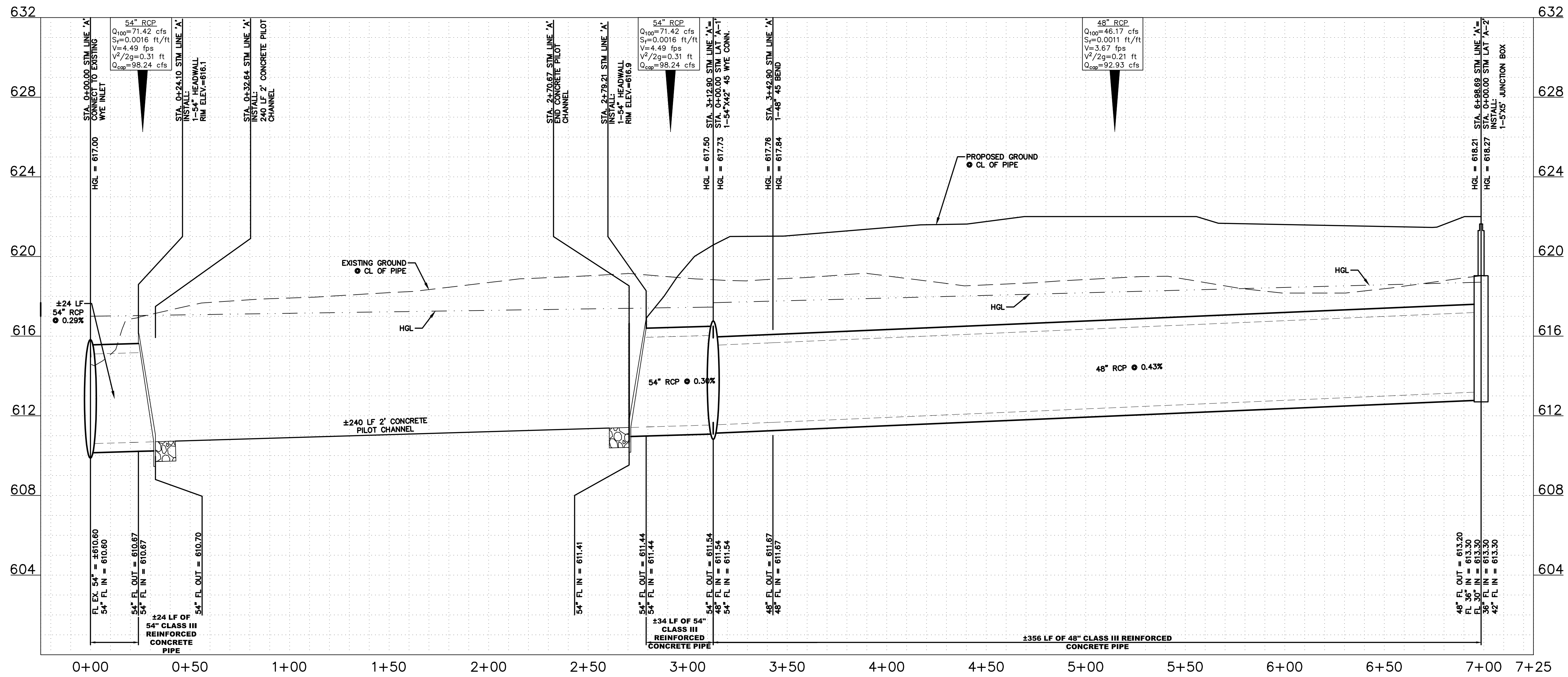
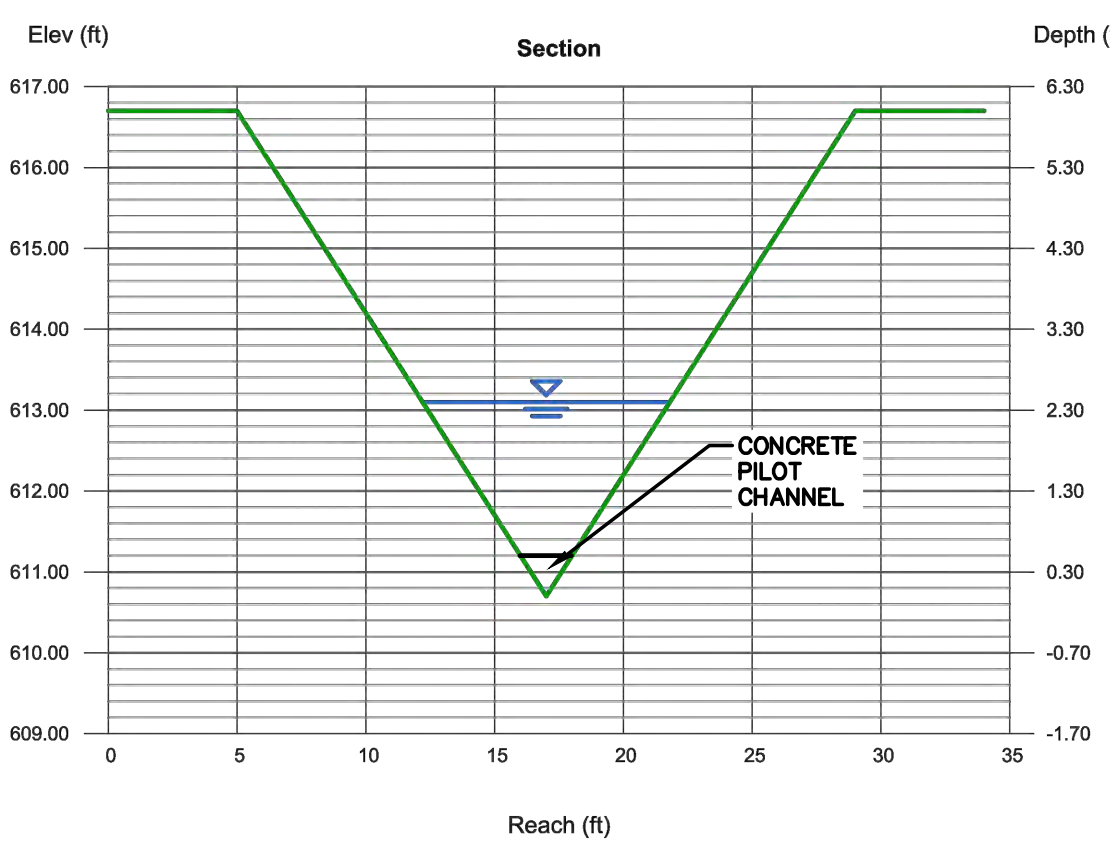


STM LINE 'A'



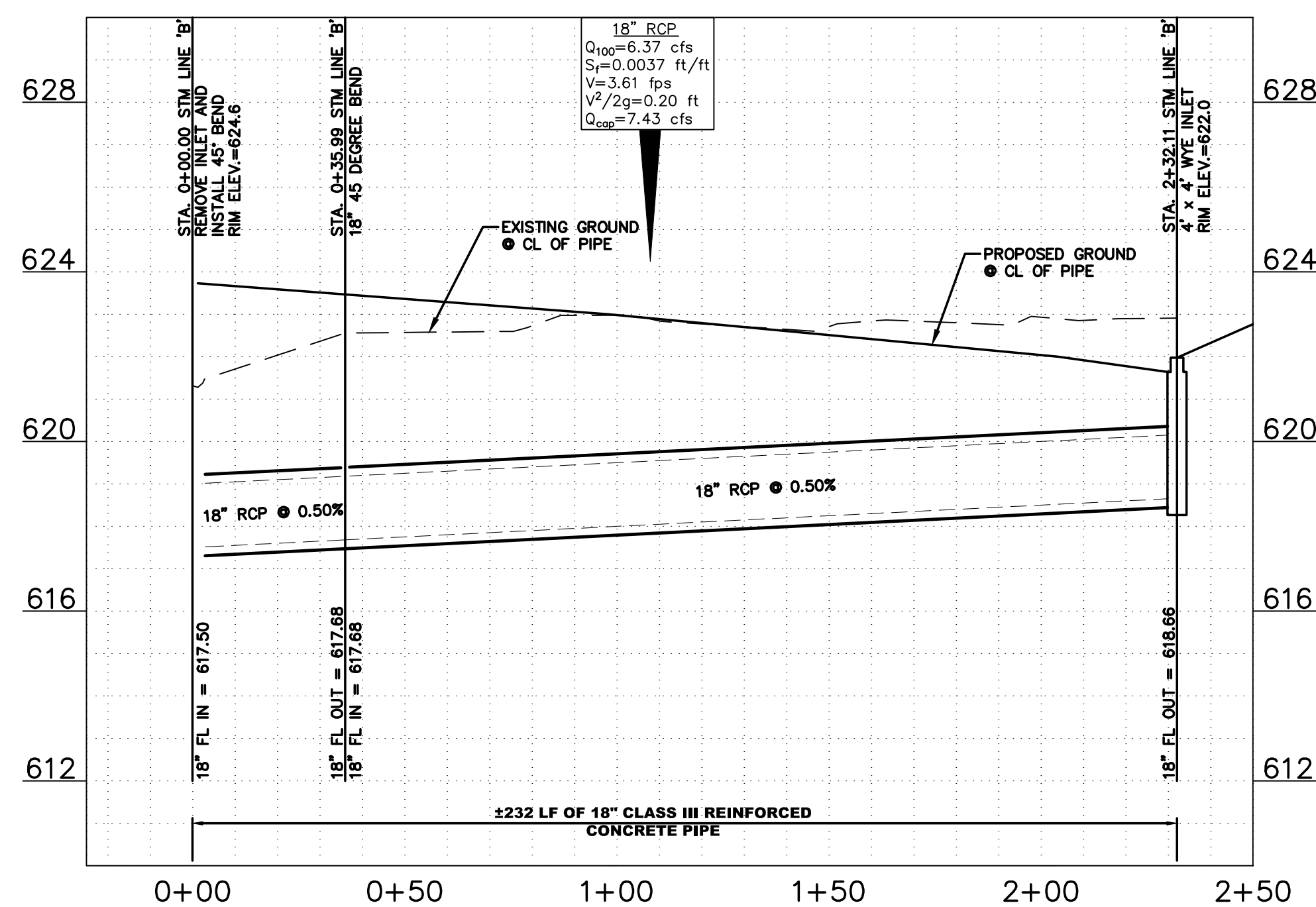
TYPICAL CHANNEL

Triangular		Highlighted	
Side Slopes (z:1)	= 2.00, 2.00	Depth (ft)	= 2.40
Total Depth (ft)	= 6.00	Q (cfs)	= 75.15
Invert Elev (ft)	= 610.70	Area (sqft)	= 11.52
Slope (%)	= 0.30	Velocity (ft/s)	= 6.52
N-Value	= 0.013	Wetted Perim (ft)	= 10.73
Calculations		Crit Depth, Yc (ft)	= 2.45
Compute by:	Known Q	Top Width (ft)	= 9.60
Known Q (cfs)	= 75.15	EGL (ft)	= 3.06



TYPICAL CHANNEL DETAIL 'A-A'

STM LINE 'B'



DATE	BY	APP'D	REVISION
18.02.08	JAM		LANDMARK EXTENSION
17.08.01	JAM		REVISED
17.07.27	JAM		SANITARY SEWER REVISIONS
17.06.29	JAM		WCP# 103 - HUE CITY RESPONSES
17.06.28	JAM		WCP# 102 - GARAGE UPDATES
	JAM		Revision
	JAM		By
	JAM		App'd
	JAM		YYMMDD
	JAM		YYMMDD
	JAM		App'd
	JAM		YYMMDD

PROJECT RECORD

to the best of North Texas Contracting, Inc. belief and knowledge the as-built conditions shown on this drawing constitute an accurate and complete depiction of the manner in which this portion of the work was actually installed.

North Texas Contracting, Inc.
7/16/18
Carson Collier, Project Manager

Client/Project
CAWLEY PARTNERS
Cawley - Fourteen555
14555 DALLAS PARKWAY
TOWN OF ADDISON, DALLAS COUNTY, TEXAS

Permit-Seal
JOSHUA A. MILLS
100118
PROFESSIONAL ENGINEER
4/3/18

CITY OF DALLAS FILE NO: 311T-9310

Project Number: 222210632
File Name: 10632stm.dwg

JOB	JAM	JAM	18.04.11
Dwn.	Chkd.	Dsgn.	YYMMDD

Drawing No. C4.7
Revision Sheet

V:\2222\Drawings\222210632.dwg\cawley\cawley\10632stm.dwg
2018/04/16 09:21 AM by J. Adams