

CAUTION!!
CONTRACTOR IS TO CONTACT TEXAS ONE-CALL SYSTEM (1-800-245-4545) OR OTHER UTILITY LOCATING SERVICES AT LEAST 48 HOURS PRIOR TO CONSTRUCTION ACTIVITIES. STANTEC IS NOT RESPONSIBLE FOR KNOWING ALL EXISTING UTILITIES IN THE PROJECT AREA NOR FOR DEPICTING THE EXACT LOCATIONS OF UTILITIES ON THESE DRAWINGS.

LEGEND

- CITY OF DALLAS PUBLIC PAVEMENT:**
8" 4,500 PSI CONCRETE PWMT. W/#4 BARS @ 18" O.C.E.W. ON 8" COMPACTED SUBGRADE PER CITY OF DALLAS DETAILS AND SPECIFICATIONS.
- TOWN OF ADDISON PUBLIC PAVEMENT:**
8" 4,200 PSI REINFORCED CONCRETE PWMT. W/#3 BARS @ 18" O.C.E.W. ON 8" SCARIFIED AND COMPACTED SUBGRADE STABILIZED WITH 30 LBS PER SQ. YARD OF HYDRATED LIME AT A MINIMUM OF 98% MAXIMUM STANDARD PROCTOR DRY DENSITY (ASTM D 698) WITHIN -1% TO +2% OF OPTIMUM MOISTURE CONTENT. PAVEMENT MUST MEET TOWN OF ADDISON STANDARD DETAILS AS DESCRIBED ON SHEET SD-P01 OF THE PAVING STANDARD DETAILS.
- MEDIUM DUTY PAVEMENT:**
7" 4,000 PSI REINFORCED CONCRETE PWMT. W/#3 BARS @ 18" O.C.E.W. ON 8" SCARIFIED AND COMPACTED SUBGRADE AT A MINIMUM OF 98% MAXIMUM STANDARD PROCTOR DRY DENSITY (ASTM D 698) WITHIN -1% TO +2% OF OPTIMUM MOISTURE CONTENT.
- DUMPSTER PAVEMENT:**
7" 4,000 PSI REINFORCED CONCRETE PWMT. W/#3 BARS @ 18" O.C.E.W. ON 8" SCARIFIED AND COMPACTED SUBGRADE AT A MINIMUM OF 98% MAXIMUM STANDARD PROCTOR DRY DENSITY (ASTM D 698) WITHIN -1% TO +2% OF OPTIMUM MOISTURE CONTENT.
- PARKING AREAS:**
5" 3,600 PSI REINFORCED CONCRETE PWMT. W/#3 BARS @ 18" O.C.E.W. ON 8" SCARIFIED AND COMPACTED SUBGRADE AT A MINIMUM OF 98% MAXIMUM STANDARD PROCTOR DRY DENSITY (ASTM D 698) WITHIN -1% TO +2% OF OPTIMUM MOISTURE CONTENT.
- SIDEWALK & FLATWORK (PRIVATE):**
4" REINFORCED CONCRETE SIDEWALK FLATWORK (3,000 PSI AT 28 DAYS) W/#3 BARS @ 18" O.C.E.W. ON COMPACTED SUBGRADE TO 98% AT -1% TO +2% OF OPTIMUM MOISTURE CONTENT. (ASTM D 698)
- PUBLIC SIDEWALK (LANDMARK FRONTAGE):**
6" WIDE, 5" REINFORCED CONCRETE SIDEWALK FLATWORK (3,000 PSI AT 28 DAYS) W/#3 BARS @ 18" O.C.E.W. ON COMPACTED SUBGRADE TO 98% AT -1% TO +2% OF OPTIMUM MOISTURE CONTENT. (ASTM D 698)
- FARMERS BRANCH HIKE & BIKE TRAIL:**
4" REINFORCED CONCRETE SIDEWALK FLATWORK (3,000 PSI AT 28 DAYS) W/#3 BARS @ 18" O.C.E.W. ON COMPACTED SUBGRADE TO 98% AT -1% TO +2% OF OPTIMUM MOISTURE CONTENT. (ASTM D 698)
- FIRE LANE PAVEMENT:**
7" 4,000 PSI REINFORCED CONCRETE PWMT. W/#3 BARS @ 18" O.C.E.W. ON 6" LIME STABILIZED SUBGRADE AT A MINIMUM OF 98% MAXIMUM STANDARD PROCTOR DRY DENSITY (ASTM D 698) WITHIN -1% TO +2% OF OPTIMUM MOISTURE CONTENT.
- SAWCUT:** REMOVE AND DISPOSE OF EXISTING CURB, GUTTER & PAVEMENT
- REFER TO SHEET C6.1 - PAVING PLAN FOR SECTION DETAILS.**

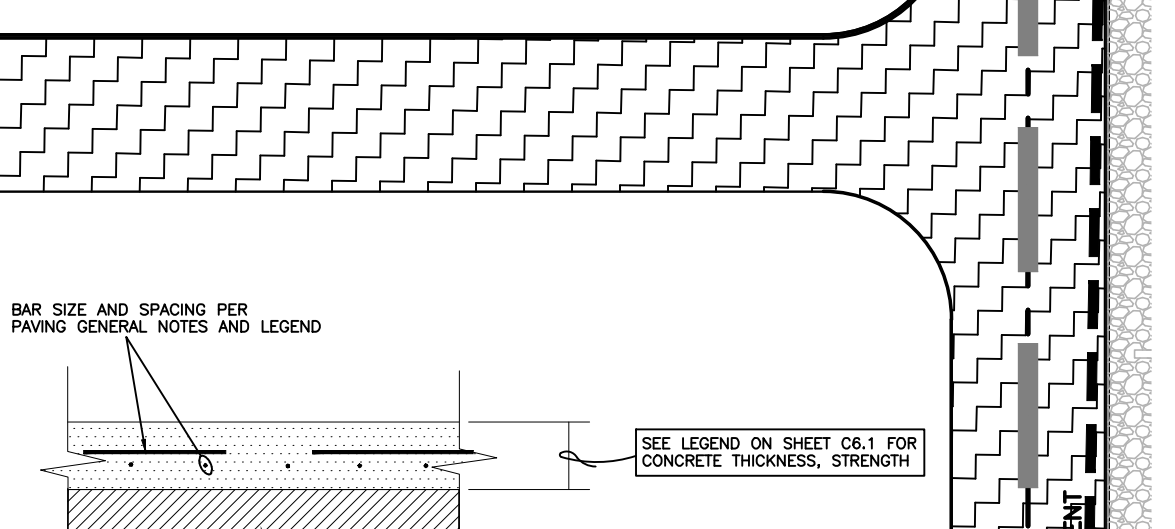
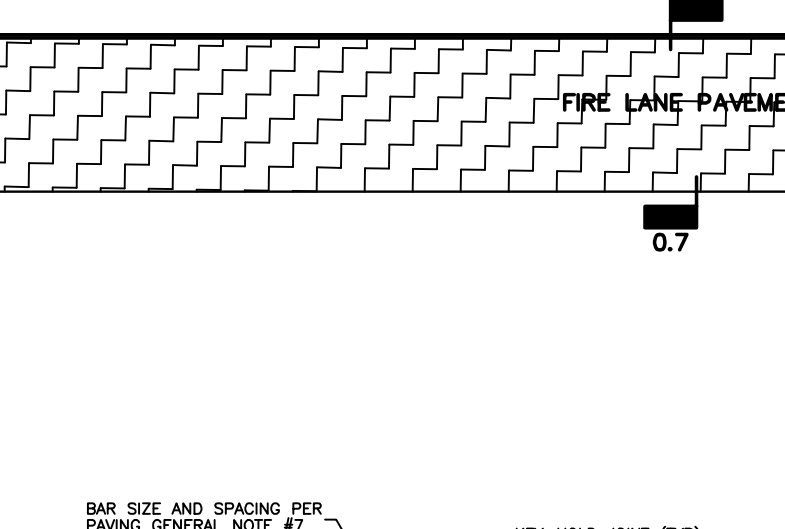
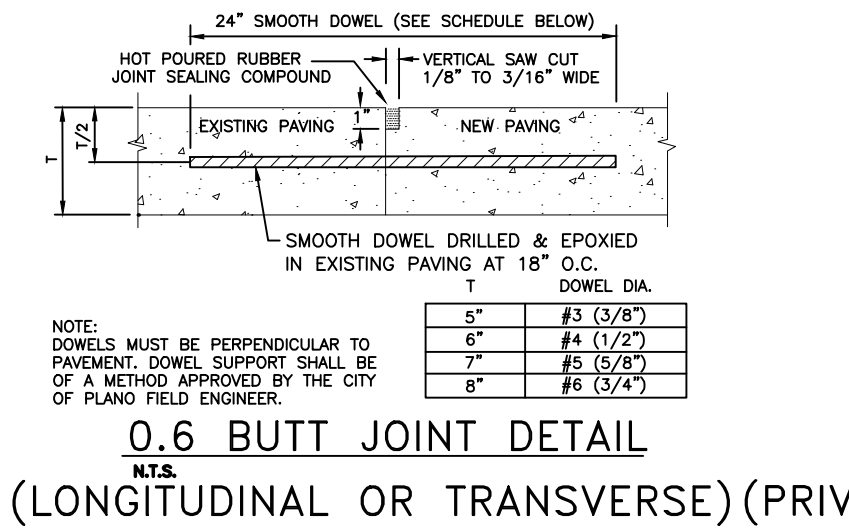
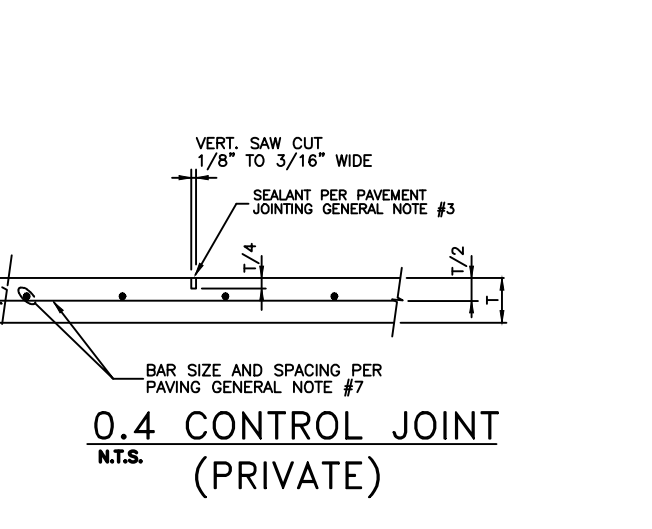
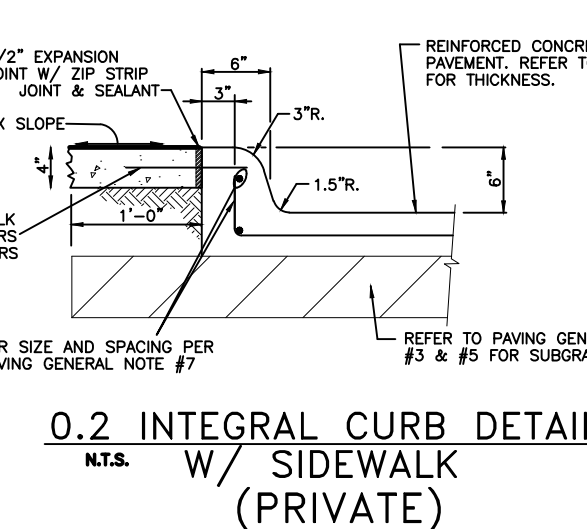
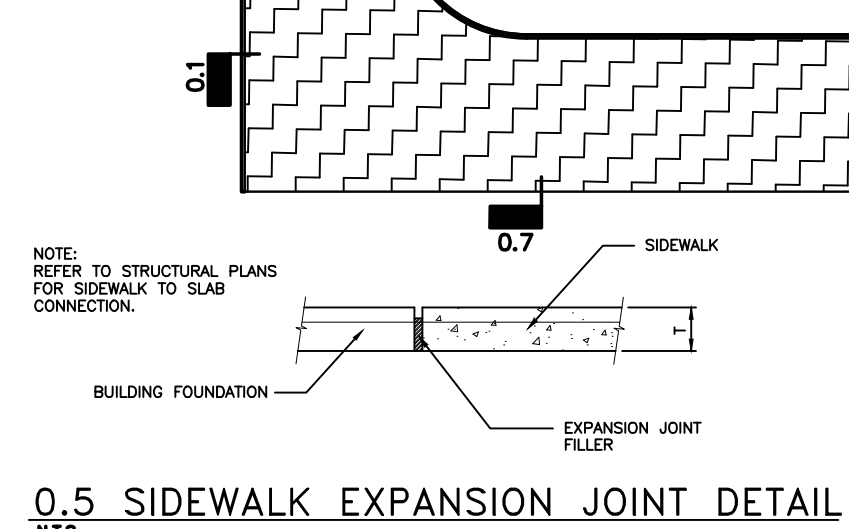
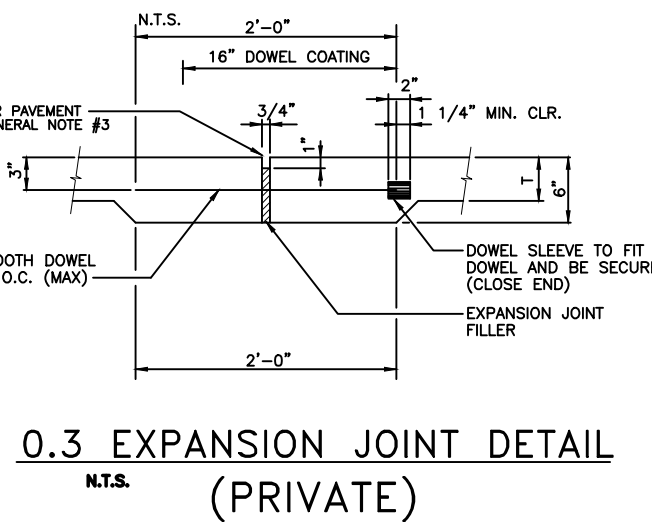
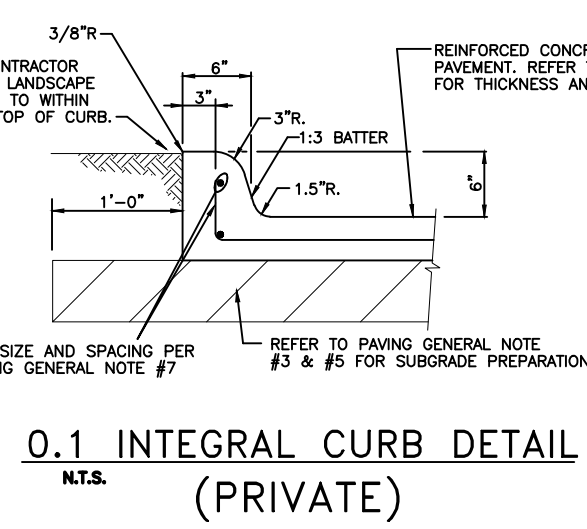
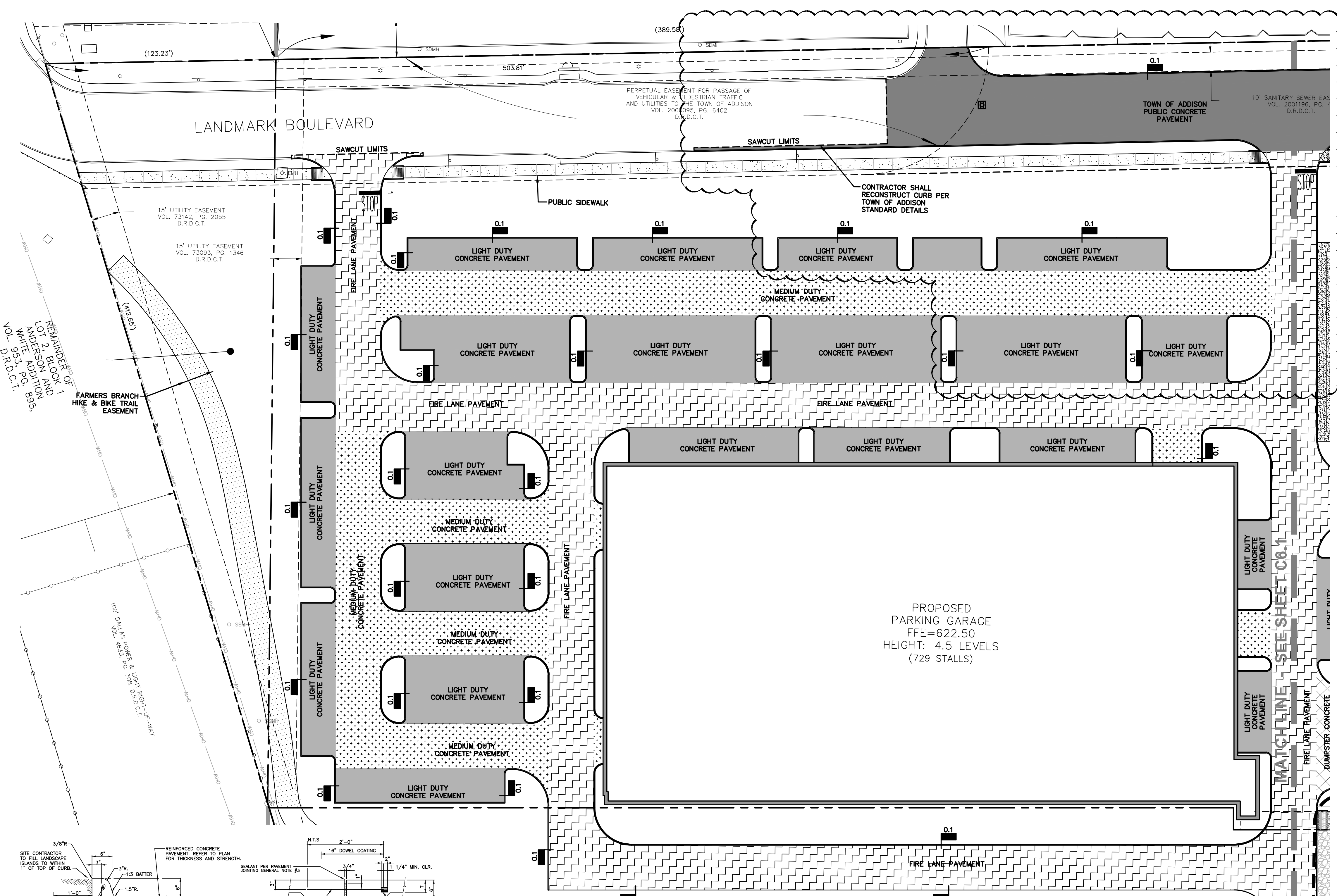
PROJECT RECORD

To the best of North Texas Contracting, Inc. skill and knowledge the as-built conditions shown on this drawing constitute an accurate and complete depiction of the manner in which this portion of the work was actually installed.
North Texas Contracting, Inc.
7/16/18
Carson Collier, Project Manager

Client/Project: **CRAWLEY PARTNERS**
Cowley - Fourteen555
14555 DALLAS PARKWAY
TOWN OF ADDISON, DALLAS COUNTY, TEXAS
Title: **PAVING PLAN**

Permit-Seal

Project Number: 222210632
File Name: 10632pvp.dwg
Drawing No. **C6.2**
Revision Sheet



NOTE:
• DETAILS PROVIDED ON THIS SHEET ARE NOT FOR USE WITHIN PUBLIC RIGHT-OF-WAY OR STREET EASEMENTS.

NOTE:
• ALL ON-SITE PAVEMENT IS PRIVATE EXCEPT NOTED FIRE LANES.

CITY OF DALLAS FILE NO: 311T-9310

BENCHMARKS:
REFERENCE BENCHMARK:
TOWN OF ADDISON CONTROL POINT NO. COA-14 LOCATED 1,730' SOUTH EAST FROM THE INTERSECTION OF LANDMARK PLACE AND LANDMARK BOULEVARD THEN 40.6' WEST OF STREET SIGN, 8.15' NORTH OF CHAINLINK FENCE AND 70.5' EAST OF STREET SIGN. ELEVATION = 623.19'
SITE BENCHMARK:
3-1/4" ALUMINUM DISK IN STAMPED "STANTEC" FOUND LOCATED APPROXIMATELY 1000' WEST FROM THE CENTERLINE OF THE SOUTHBOUND SERVICE ROAD OF THE DALLAS NORTH TOLLWAY, APPROXIMATELY 730' SOUTH FROM THE CENTERLINE OF LANDMARK BOULEVARD. POINT ALSO BEING THE SOUTHWEST CORNER OF SUBJECT TRACT. ELEVATION = 616.60'

V:\2222\10632\10632.dwg (C:\Users\jmill\OneDrive\10632PVP.dwg) 2018/07/16 10:52 AM BY J.MILLSAP