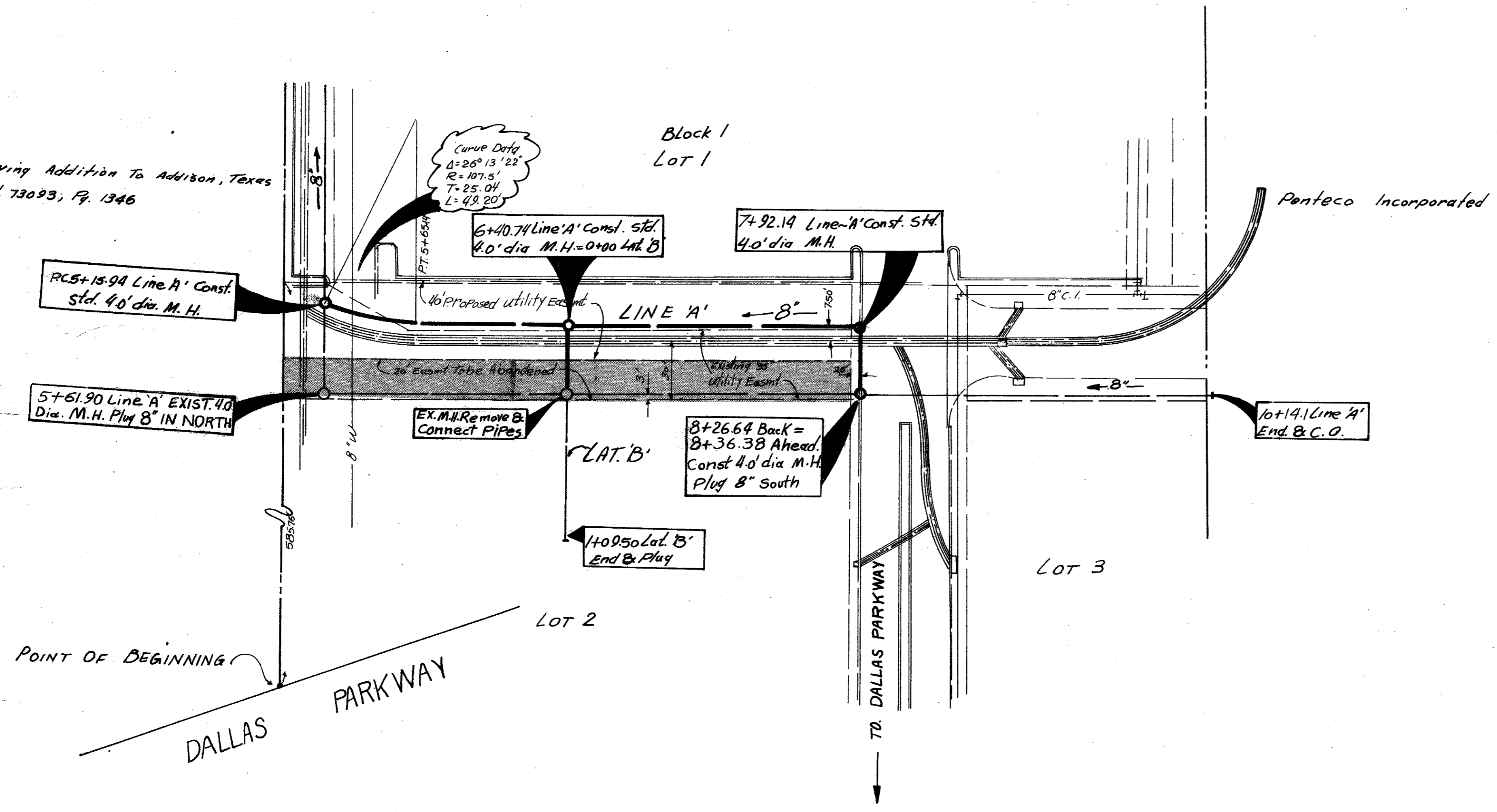
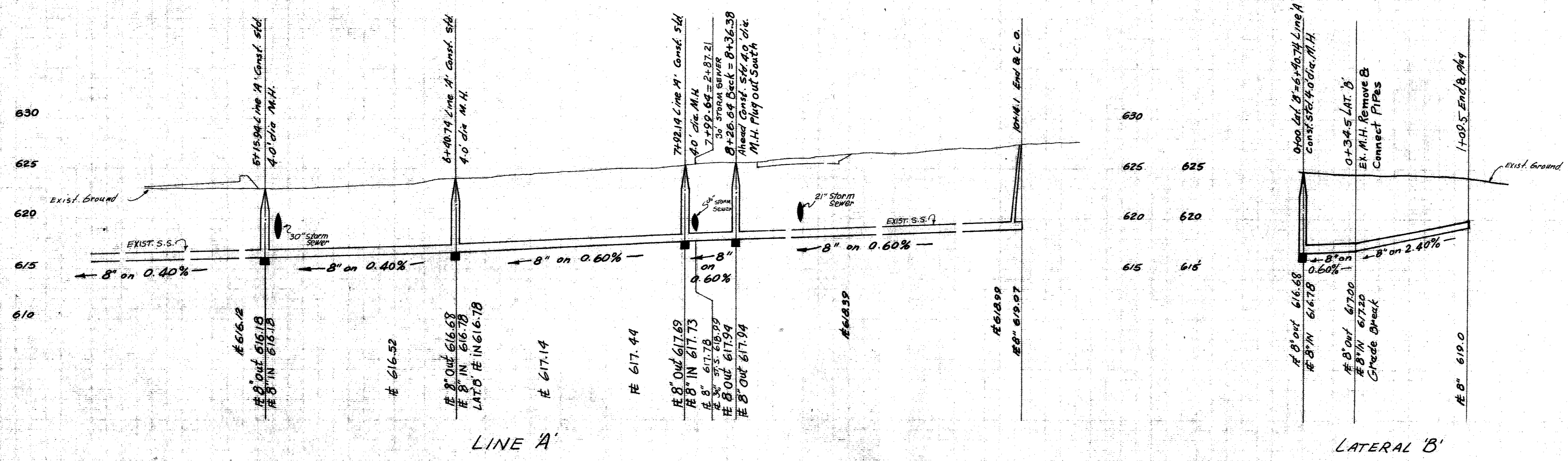


S. Finley Ewing Addition To Addison, Texas  
Vol. 73093, Pg. 1346



JOSIAH PANCOAST SURVEY - ABSTRACT 1146



SANITARY SEWER RELOCATION						
WELLINGTON SQUARE						
CITY OF ADDISON						
DALLAS COUNTY TEXAS						
HAROLD L. EVANS & CONSULTING ENGINEER						
DESIGN	DRAWN	DATE	SCALE	NOTE	FILE	NO.
D.M.H.	D.M.H.	AUG 1983	1\"/>			