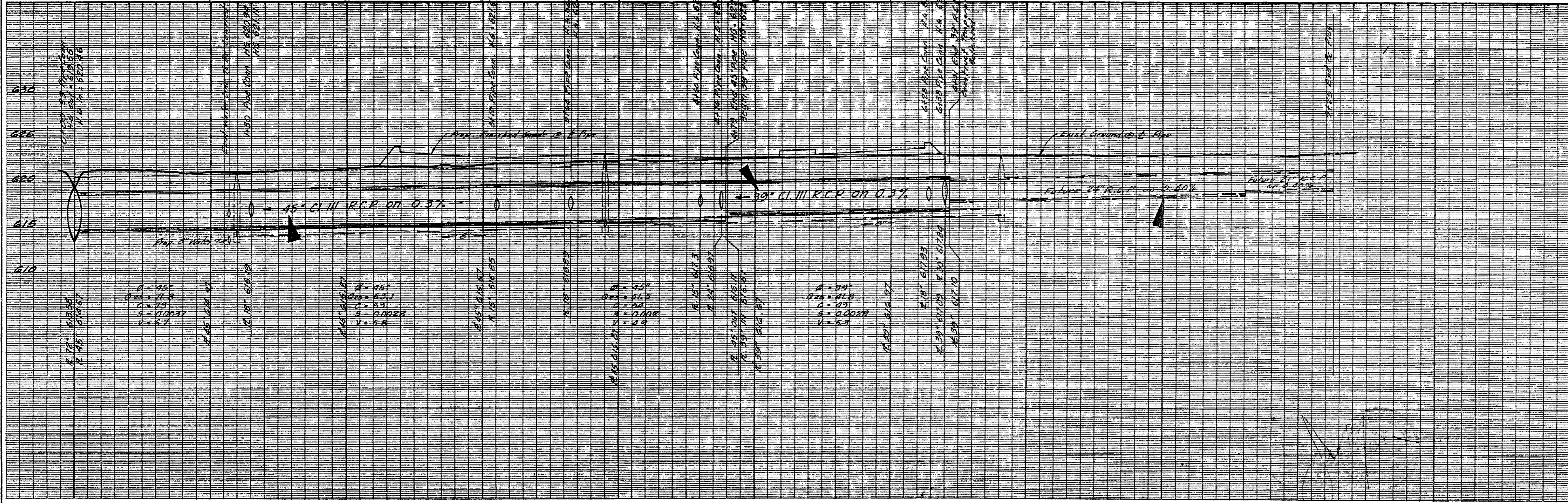
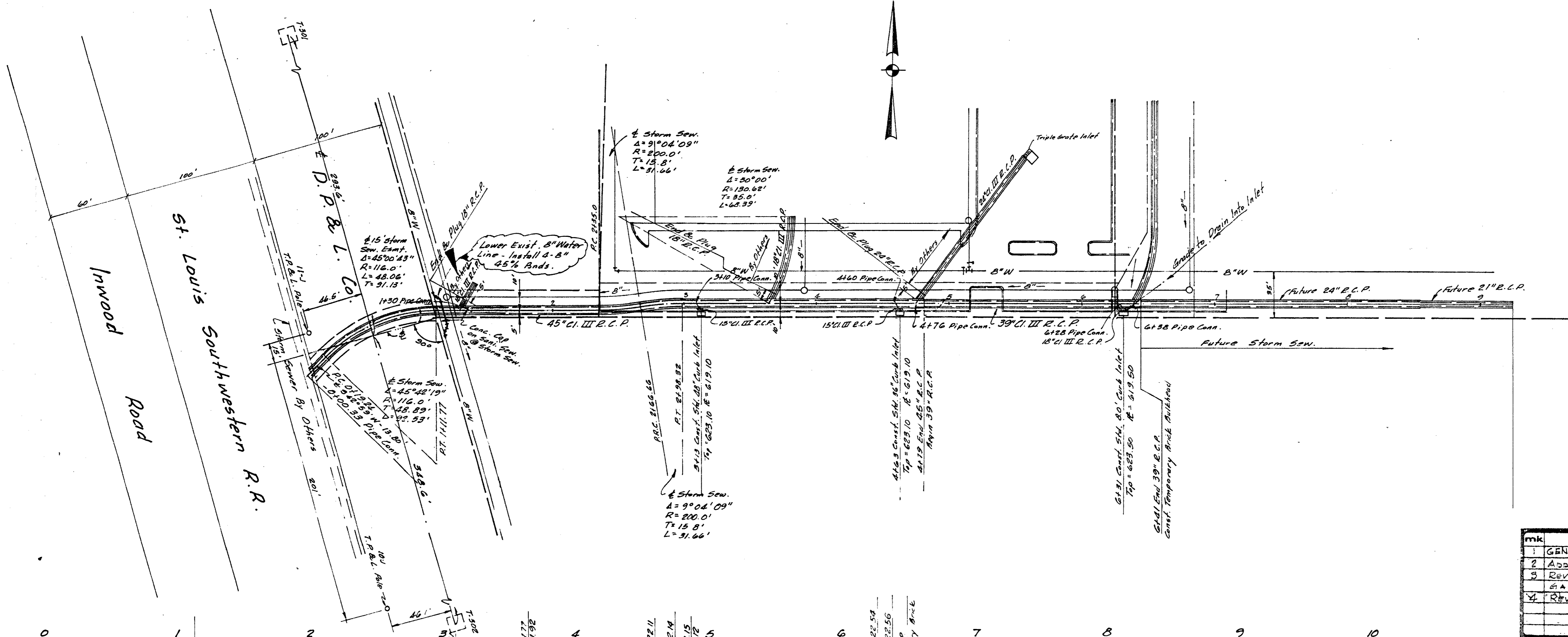


Storm Sewer
 14651 Dallas Parkway
 The Princeton Bldg
 formerly Crestview Square
 — 1980



mk	revisions	date
1	GENERAL REVISION	2-4-80
2	ADD STUB FOR GARAGE ST. SEW. STA 1+66	3-18-80
3	REVISED ST. SEW. SIZE & STUB FOR GARAGE	6-20-80
4	REVISED ST. SEW.	7-2-80

CITY OF ADDISON
APPROVED
 FOR CONSTRUCTION

BUILDING DEPARTMENT
 DATE: _____
 NOTE: CONTRACTOR IS HEREBY INSTRUCTED TO EXERCISE CARE IN MEETING OR EXCEEDING ALL REQUIREMENTS OF BOTH NATIONAL AND LOCAL CODES AND/OR ORDINANCES APPLICABLE TO HIS WORK. APPROVAL OF THESE DRAWINGS SHALL NOT BE CONSTRUED TO RELIEVE RESPONSIBILITY OR IMPLY VARIANCE TO SUCH CODES.

PLAN - PROFILE						
STORM SEWER						
CRESTVIEW SQUARE						
VANTAGE COMPANIES						
ALBERT H. HALPE ASSOCIATES, INC. - ENGINEERS						
CITY OF ADDISON, TEXAS						
DESIGN	DRAWN	DATE	SCALE	NOTES	FILE	NO.
J.I.N.	VERNON	10/79	H: 1/2" = 1'	6514	VW-1	55-2

VANTAGE JOB NO. 79390