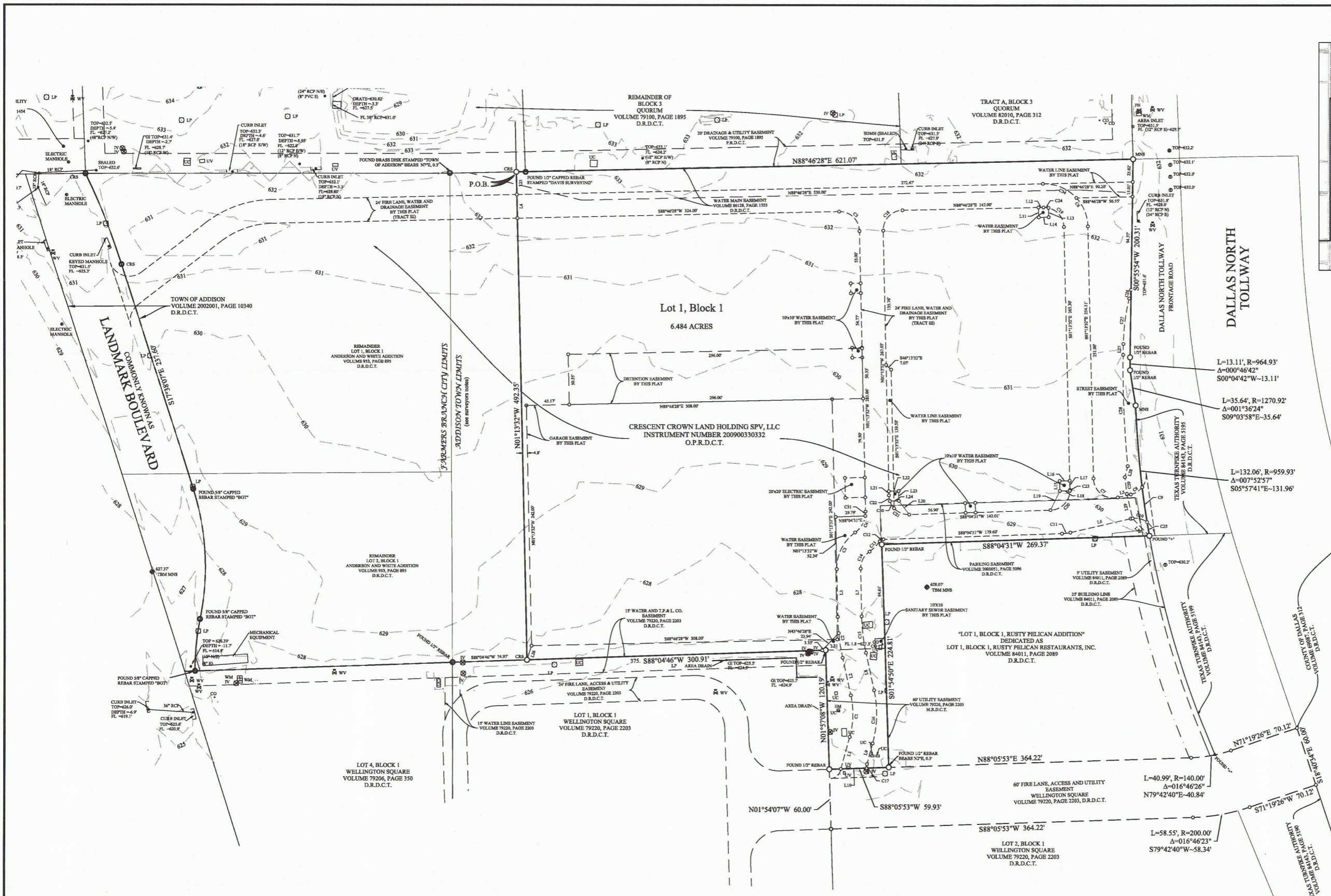
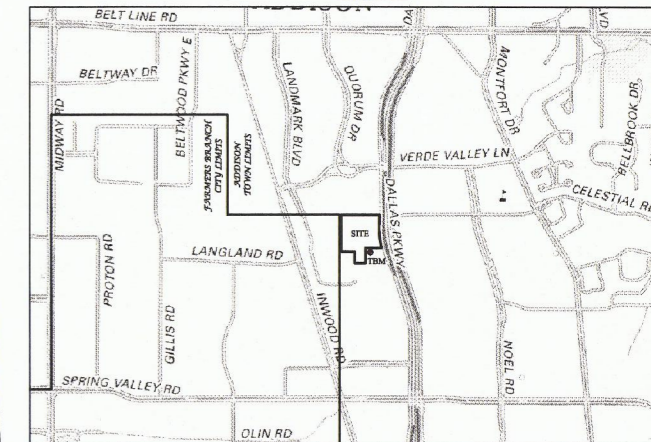


Vicinity Map
Not to Scale



DALLAS NORTH TOLLWAY

Lot 1, Block 1
6.484 ACRES

CRESCENT CROWN LAND HOLDING SPV, LLC
INSTRUMENT NUMBER 200900330332
O.P.R.D.C.T.

"LOT 1, BLOCK 1, RUSTY PELICAN ADDITION"
DEDICATED AS
LOT 1, BLOCK 1, RUSTY PELICAN RESTAURANTS, INC.
VOLUME 84911, PAGE 2089
D.R.D.C.T.

LOT 1, BLOCK 1
WELLINGTON SQUARE
VOLUME 79220, PAGE 2203
D.R.D.C.T.

LOT 4, BLOCK 1
WELLINGTON SQUARE
VOLUME 79206, PAGE 350
D.R.D.C.T.

LOT 2, BLOCK 1
WELLINGTON SQUARE
VOLUME 79220, PAGE 2203
D.R.D.C.T.

JPH Land Surveying, Inc. logo and contact information:

TBPLS Firm #100195-00
807 Bluebonnet Drive, Suite C
Keller, Texas 76248
www.jphlandsurveying.com
Tel (817)431-4971

North arrow and scale bar (1" = 60').

JPH Job No. 2014.010.003 - Prelim Plat
© 2015 JPH Land Surveying, Inc. - All Rights Reserved

Preliminary Plat - for review purposes only
Crescent Crown Addition
6.484 acres
Josiah Pancoast Survey
Abstract No. 1146
Town of Addison
Dallas County, Texas
sheet 1 of 2 sheets