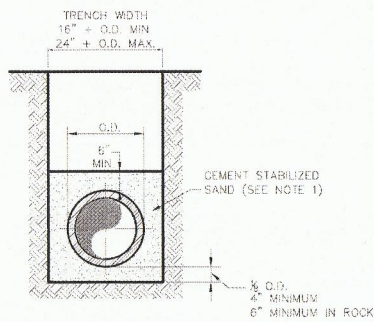
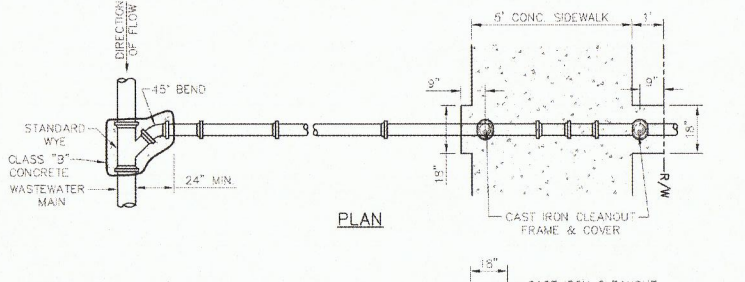
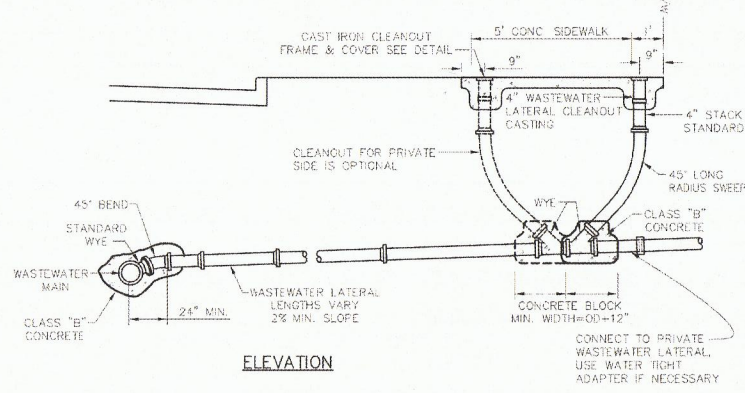


TYPICAL P.V.C. WASTEWATER MAIN EMBEDMENT



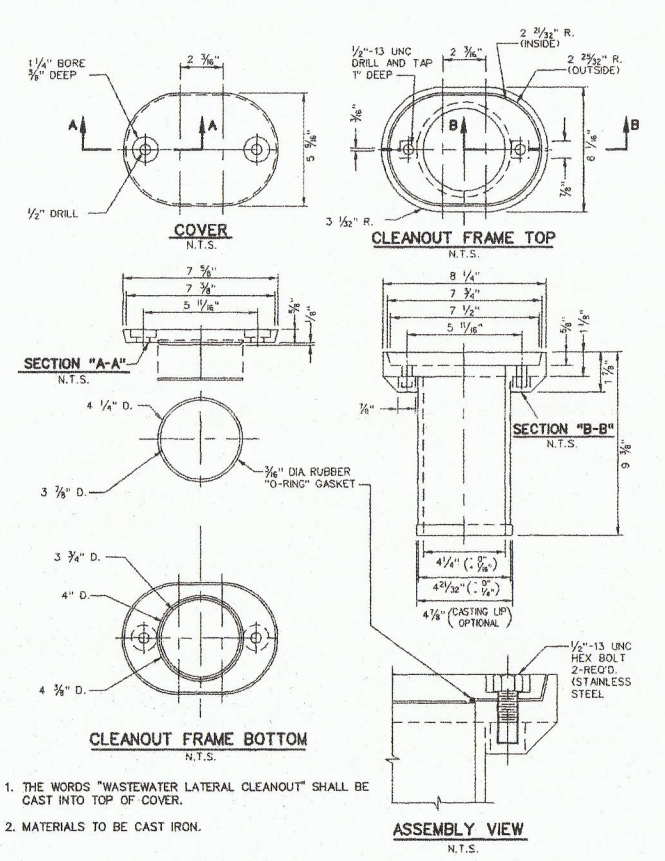
NOTE:  
1. CEMENT STABILIZED SAND SHALL HAVE A MINIMUM OF 10% CEMENT PER CUBIC YARD OF CEMENT STABILIZED SAND MIXTURE BASED ON LOOSE DRY WEIGHT VOLUME (AT LEAST 2.5 BAGS OF CEMENT PER CUBIC YARD OF MIXTURE). THE USE OF BROWN COLORING IN CEMENT STABILIZED SAND IS REQUIRED FOR PRESSURE RATED WASTEWATER MAIN AND LATERAL BEDDING.

P.V.C. WASTEWATER MAIN CEMENT STABILIZED SAND EMBEDMENT

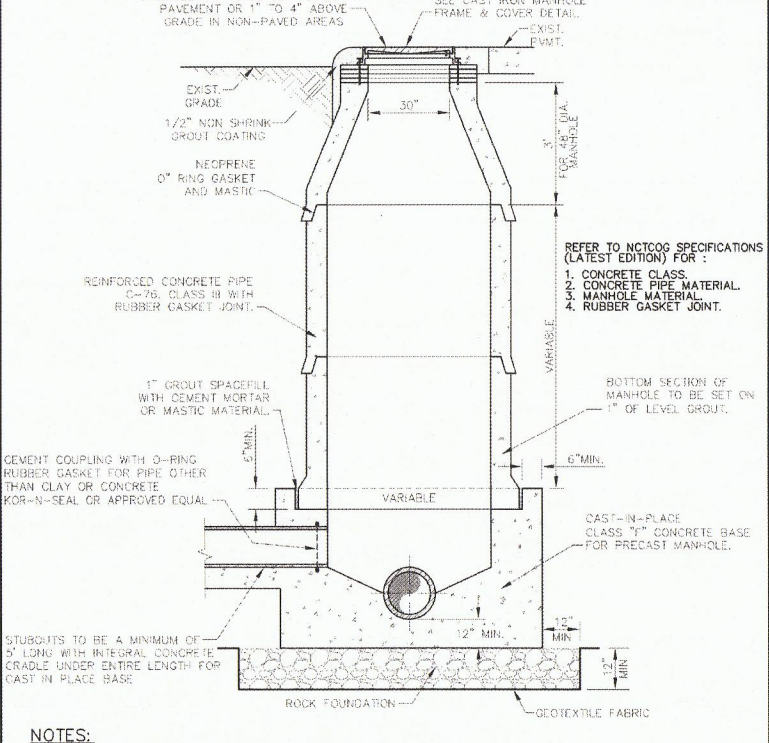


NOTES:  
1. WASTEWATER LATERALS ARE TO BE CONSTRUCTED TO CLEAR EXISTING AND PROPOSED FACILITIES, SUCH AS STORM DRAIN MAINS, RETAINING WALLS, OTHER UTILITIES, ETC.  
2. THE WASTEWATER LATERAL SHALL HAVE MINIMUM COVER OF 4'-0" BELOW THE PROPOSED CURB GRADE AT THE PROPERTY LINE, DETERMINED FROM PAVING GRADE, OR AS REQUIRED TO MAINTAIN A MINIMUM OF 2.0% GRADE, OR AS DIRECTED BY THE OWNER.

TWO-WAY CLEANOUT NEW CONSTRUCTION



CAST IRON CLEANOUT FRAME & COVER



REFER TO NCTCOS SPECIFICATIONS (LATEST EDITION) FOR:  
1. CONCRETE CLASS.  
2. CONCRETE PIPE MATERIAL.  
3. MANHOLE MATERIAL.  
4. RUBBER GASKET JOINT.

NOTES:  
1. IF FALSE MANHOLE BOTTOMS ARE REQUIRED, THEY SHALL BE CONSTRUCTED, INSTALLED, AND REMOVED PER WASTEWATER MANHOLE FALSE BOTTOM STD. DETAIL.  
2. WHERE MANHOLES ARE OUTSIDE OF PAVEMENT, FRAME & COVER SHALL BE CENTERED IN 5'x5' CONCRETE PAD CLASS "A" CONCRETE, 4" THICK  
3. ALL MANHOLES SHALL PASS VACUUM TEST AS PER NCTCOS SPECIFICATIONS

PRECAST CONCRETE PIPE MANHOLE ALTERNATE "A"

**Addison!**  
PUBLIC WORKS DEPARTMENT

P.V.C. WASTEWATER MAIN EMBEDMENT

STANDARD CONSTRUCTION DETAILS WASTEWATER

DATE: AUGUST, 2010 REV. DATE: SHEET: 50-1003

**Addison!**  
PUBLIC WORKS DEPARTMENT

TWO-WAY CLEANOUT NEW CONSTRUCTION

STANDARD CONSTRUCTION DETAILS WASTEWATER

DATE: AUGUST, 2010 REV. DATE: SHEET: 50-1003

**Addison!**  
PUBLIC WORKS DEPARTMENT

CAST IRON CLEANOUT FRAME & COVER

STANDARD CONSTRUCTION DETAILS WASTEWATER

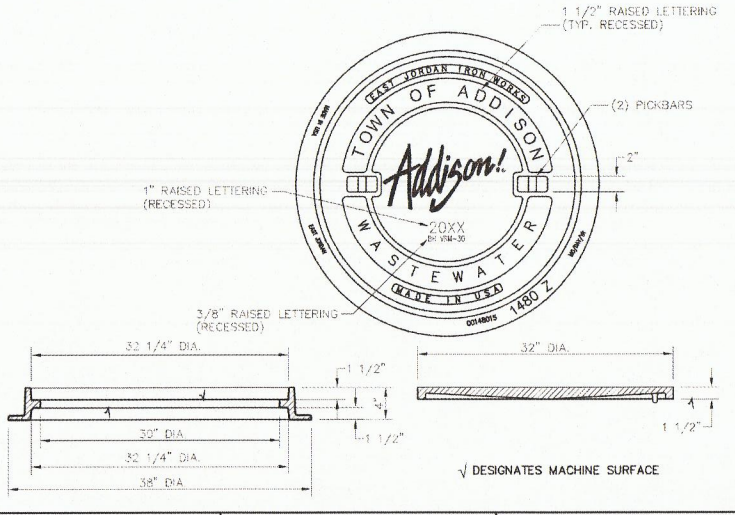
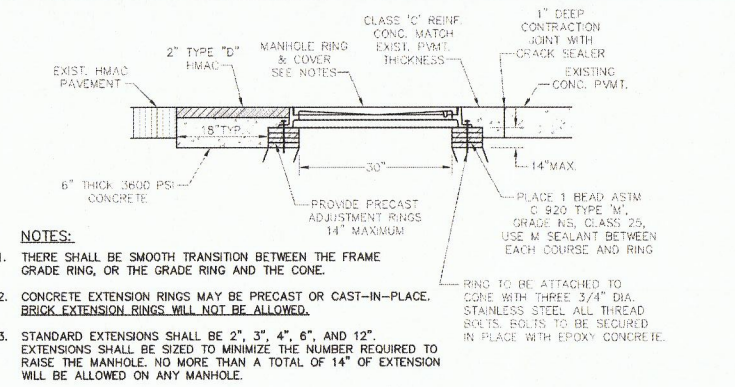
DATE: AUGUST, 2010 REV. DATE: SHEET: 50-1003

**Addison!**  
PUBLIC WORKS DEPARTMENT

PRECAST CONCRETE PIPE MANHOLE ALTERNATE "A"

STANDARD CONSTRUCTION DETAILS WASTEWATER

DATE: AUGUST, 2010 REV. DATE: SHEET: 50-1003

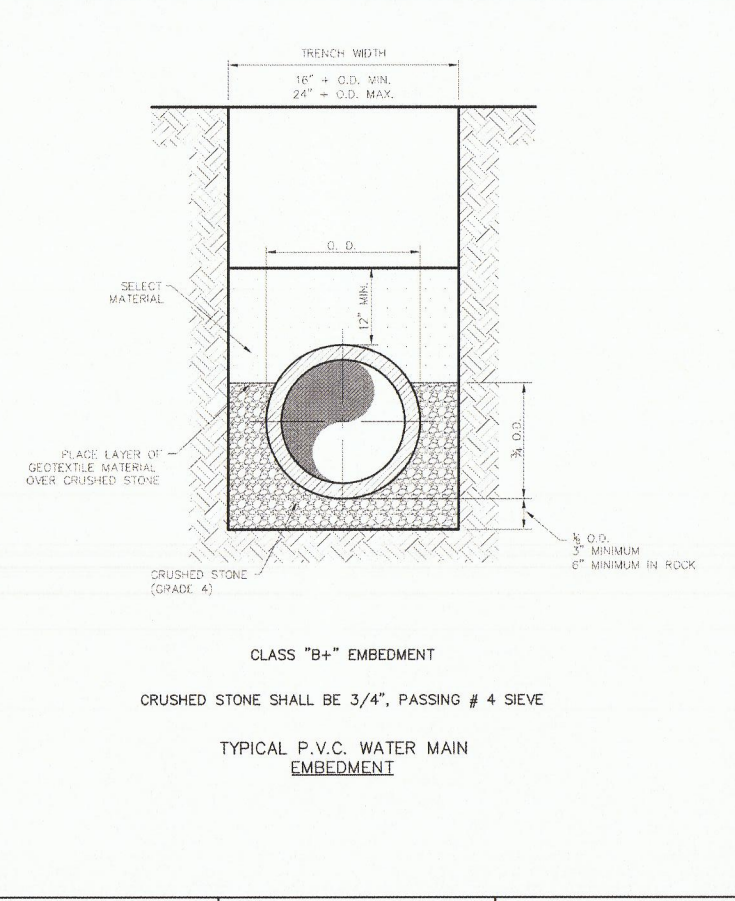


**Addison!**  
PUBLIC WORKS DEPARTMENT

CAST IRON MANHOLE FRAME AND COVER

STANDARD CONSTRUCTION DETAILS WASTEWATER

DATE: AUGUST, 2010 REV. DATE: SHEET: 50-1001

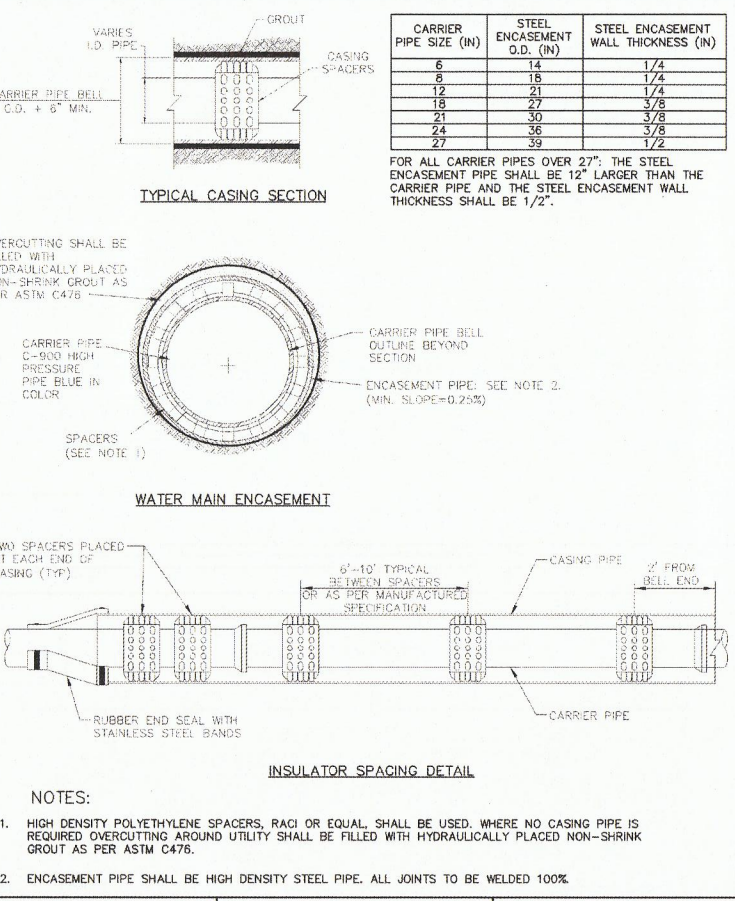


**Addison!**  
PUBLIC WORKS DEPARTMENT

P.V.C. WATER MAIN EMBEDMENT

STANDARD CONSTRUCTION DETAILS WATER

DATE: AUGUST, 2010 REV. DATE: SHEET: 50-1001

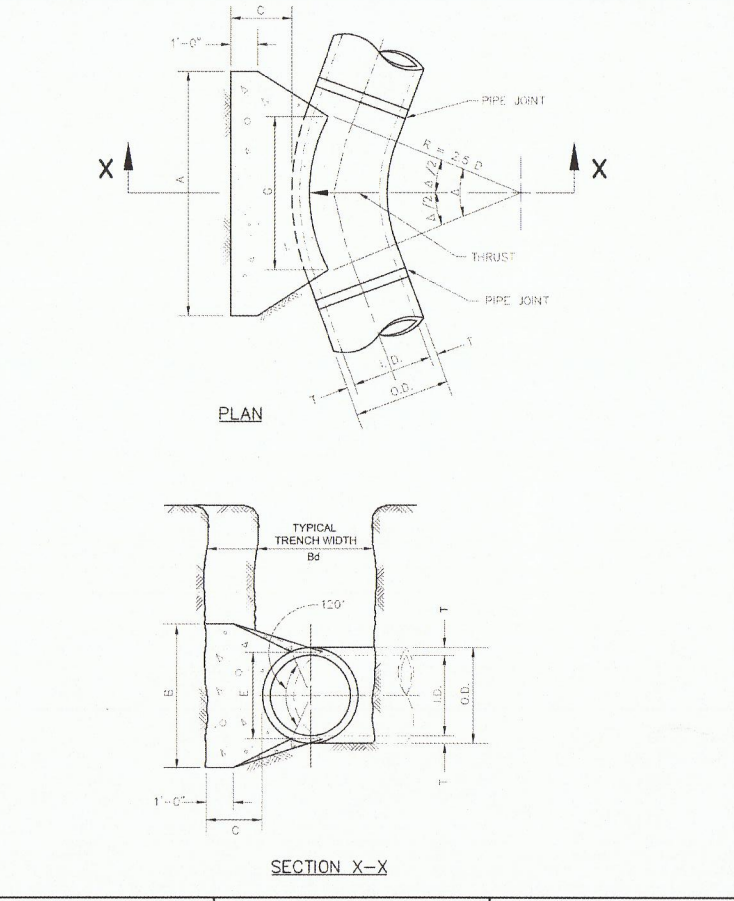


**Addison!**  
DEPARTMENT OF PUBLIC WORKS

CASING

STANDARD CONSTRUCTION DETAILS WATER

DATE: AUGUST, 2010 REV. DATE: SHEET: 50-1004



**Addison!**  
PUBLIC WORKS DEPARTMENT

HORIZONTAL THRUST BLOCK AT PIPE BEND

STANDARD CONSTRUCTION DETAILS WATER

DATE: AUGUST, 2010 REV. DATE: SHEET: 50-1004