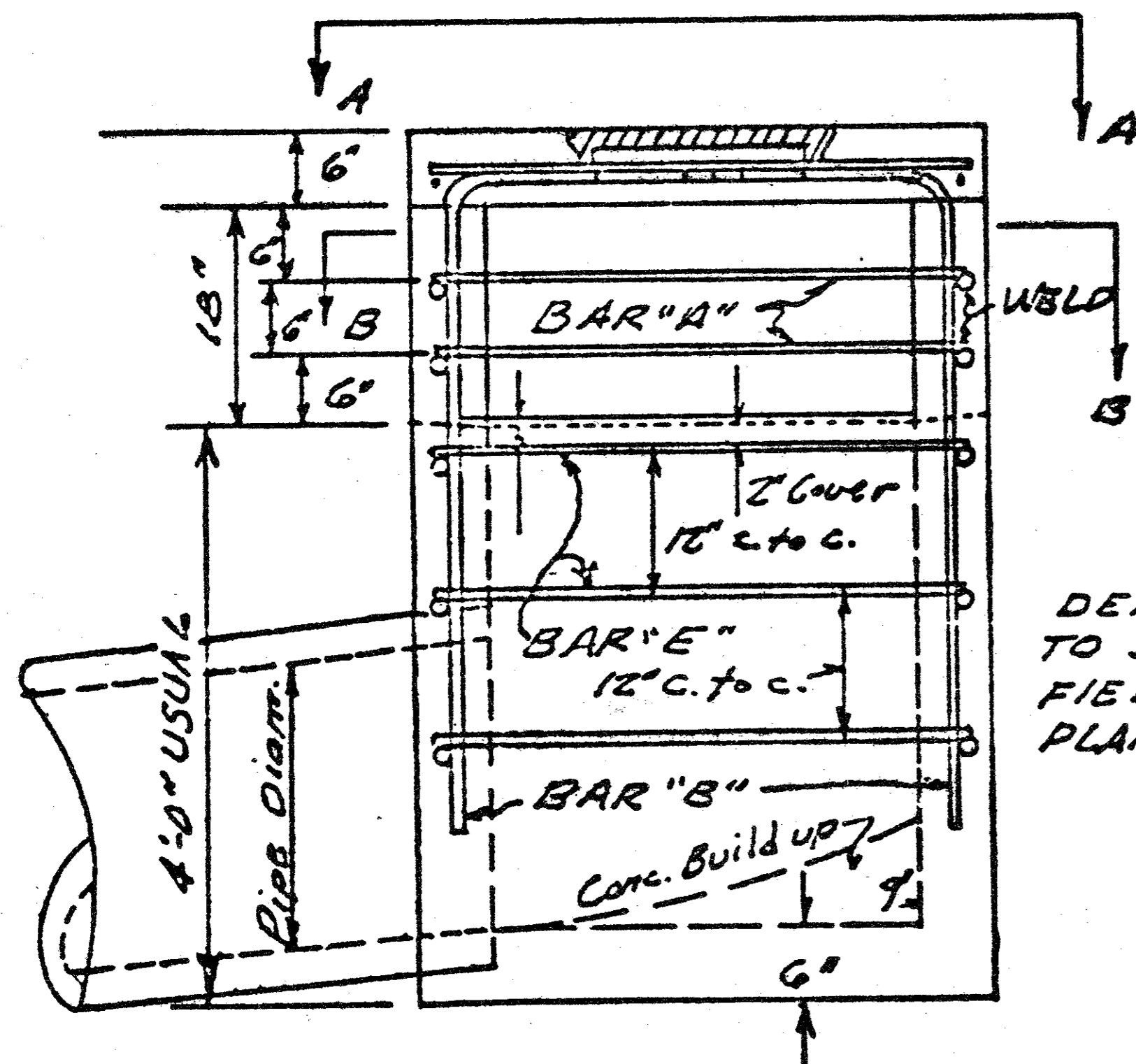
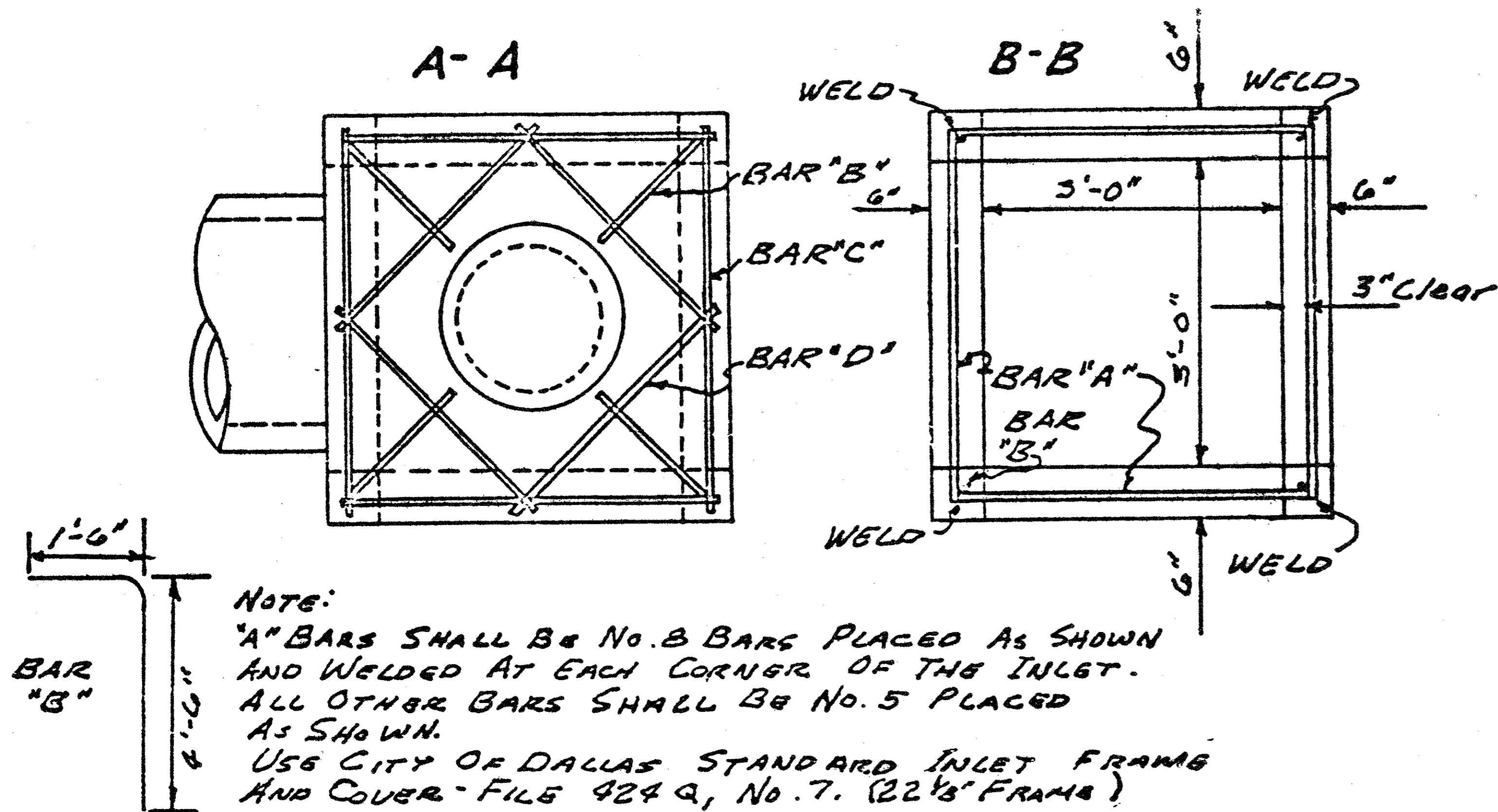
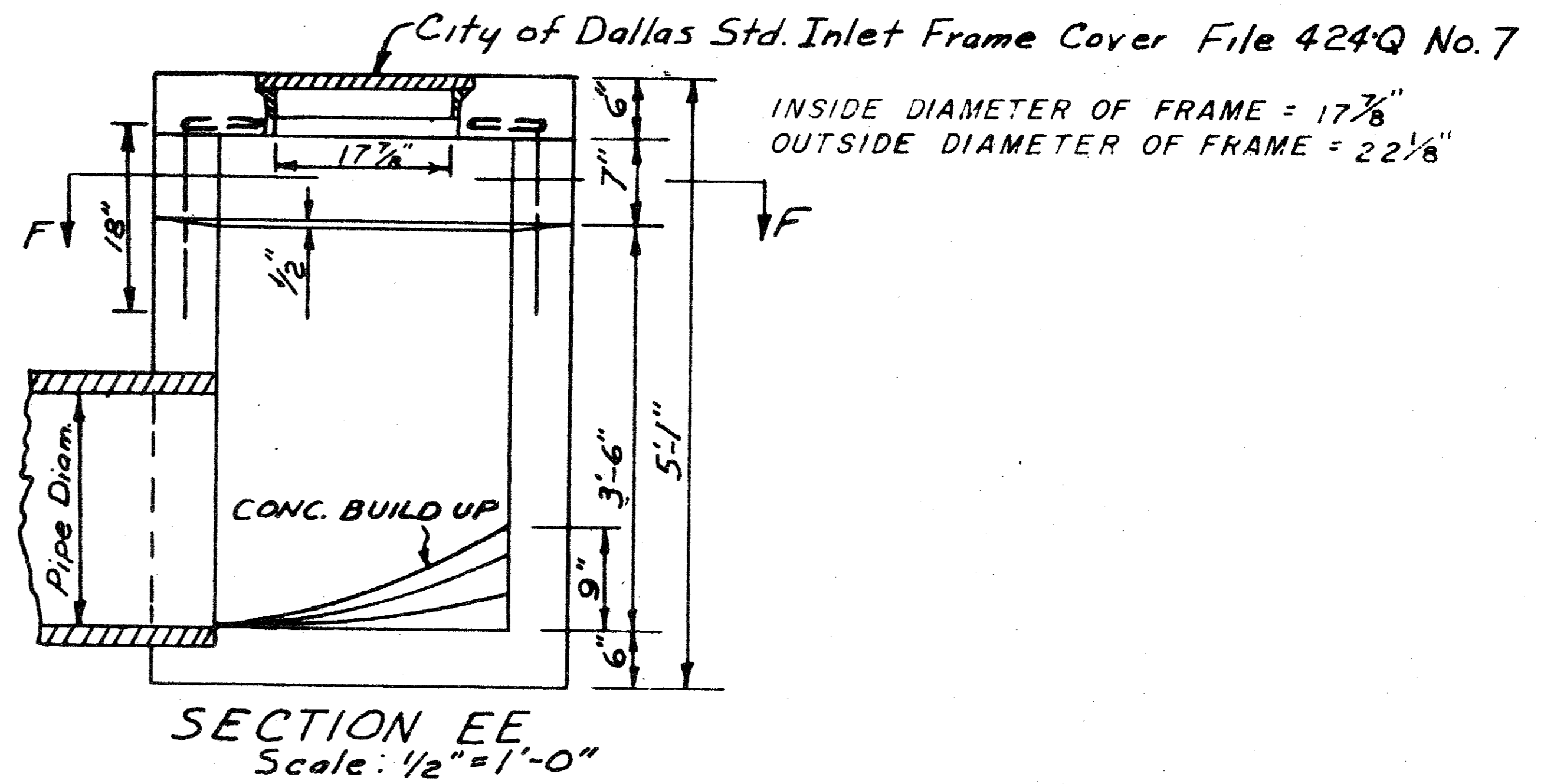
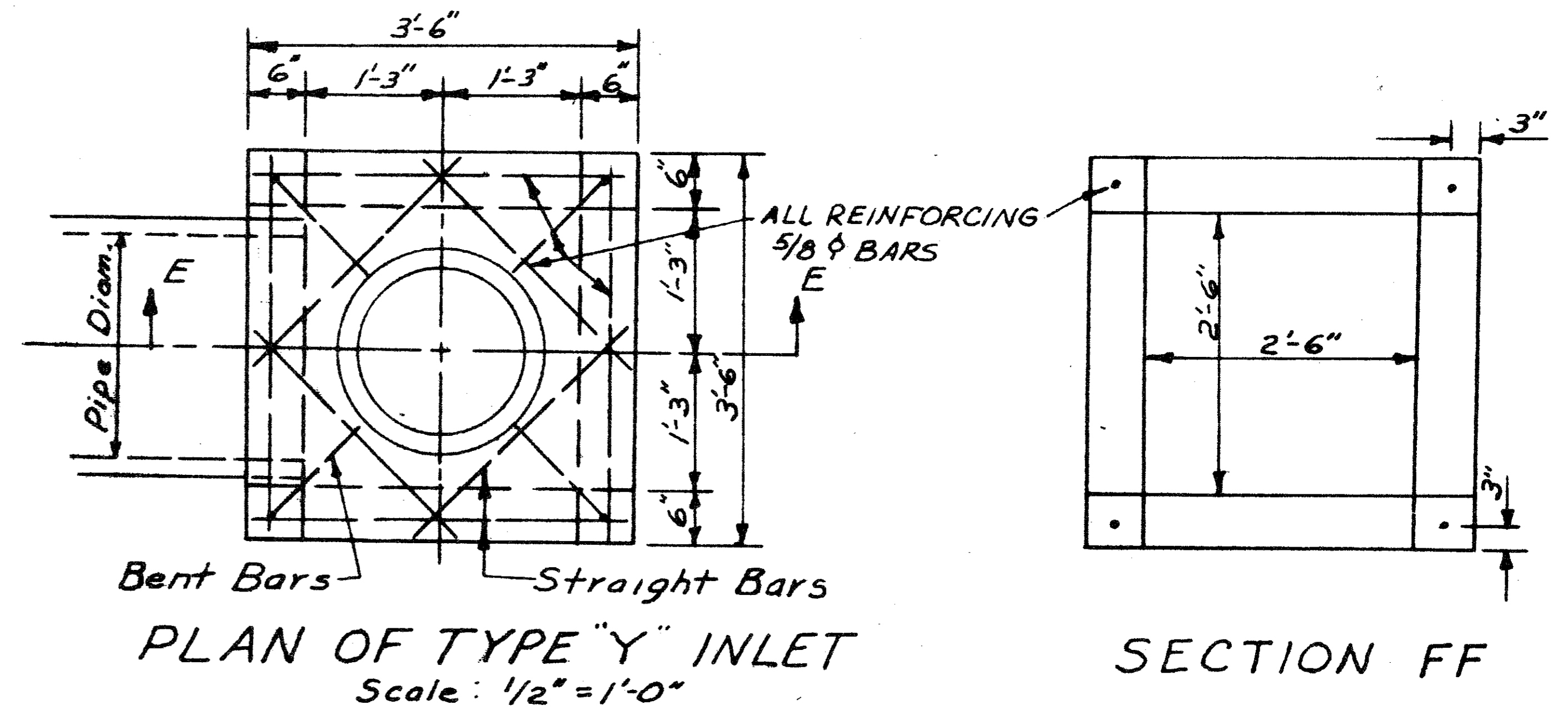


SPECIAL "Y" INLET
Scale: 1/2" = 1'



DEPTH OF INLET MAY VARY TO SUIT CONDITION IN THE FIELD OR AS SPECIFIED ON PLANS.



THE ABERDEEN
All CONC. TO BE 3000 P.S.I.
Rev. 5-6-52 Reduce Throat Opening

STANDARD CITY OF DALLAS					
TYPE "Y" INLET					
DEPARTMENT OF PUBLIC WORKS					
DRAWN	TRACED	DATE	SCALE	FILE	SHEET
H.C.	R.E.H.	JUNE 50	NO. ED	424	6 of 11