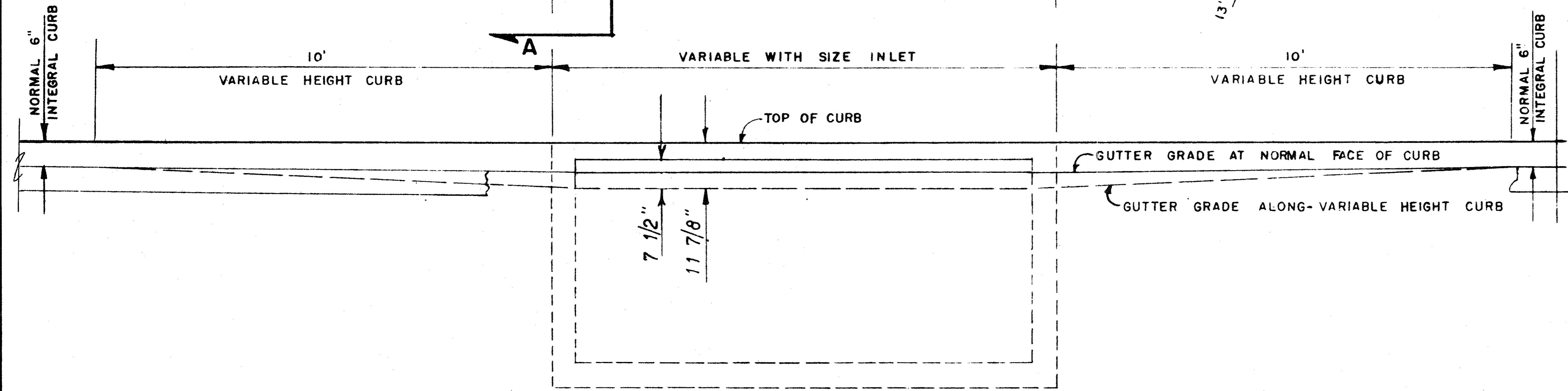
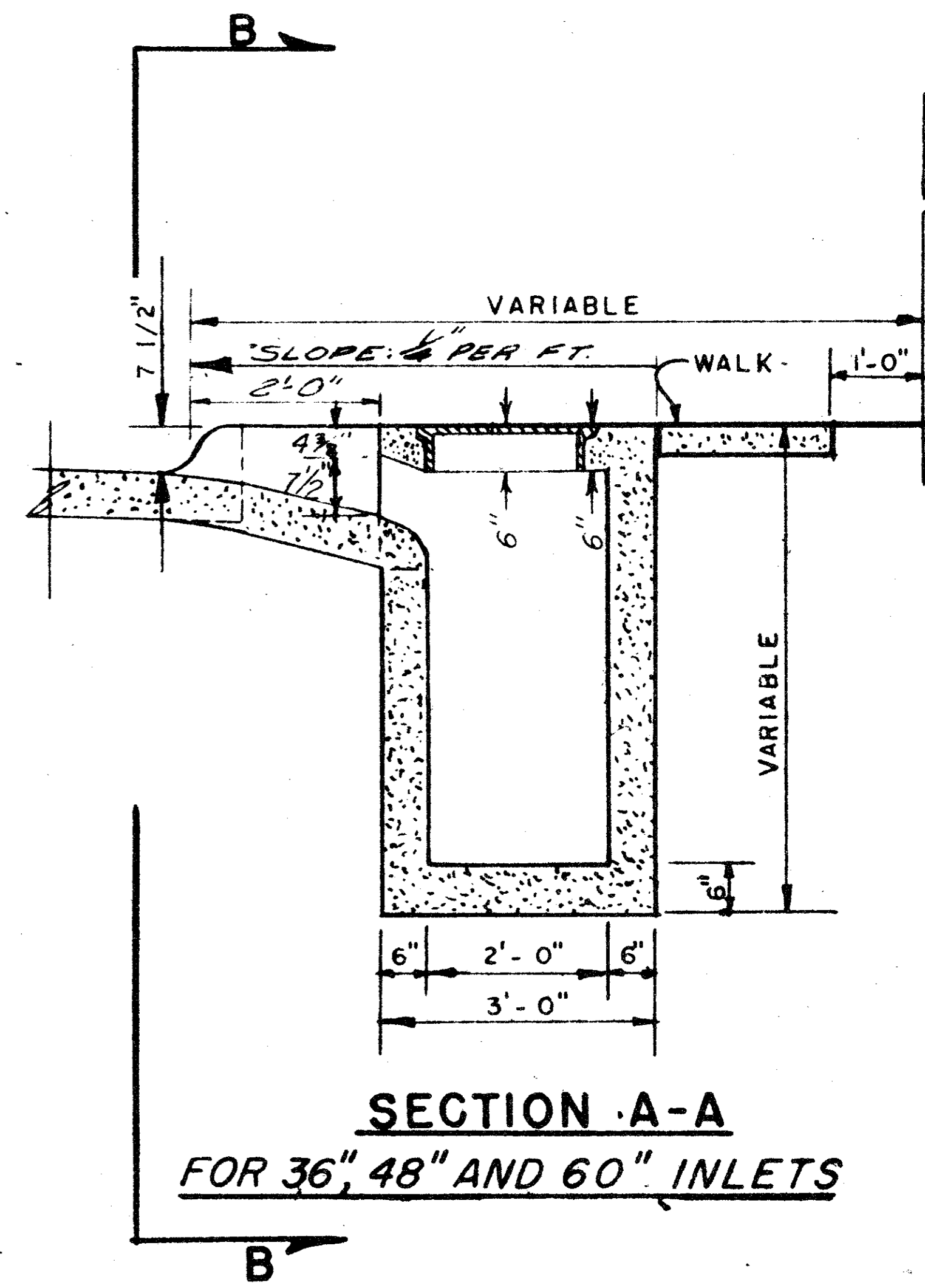


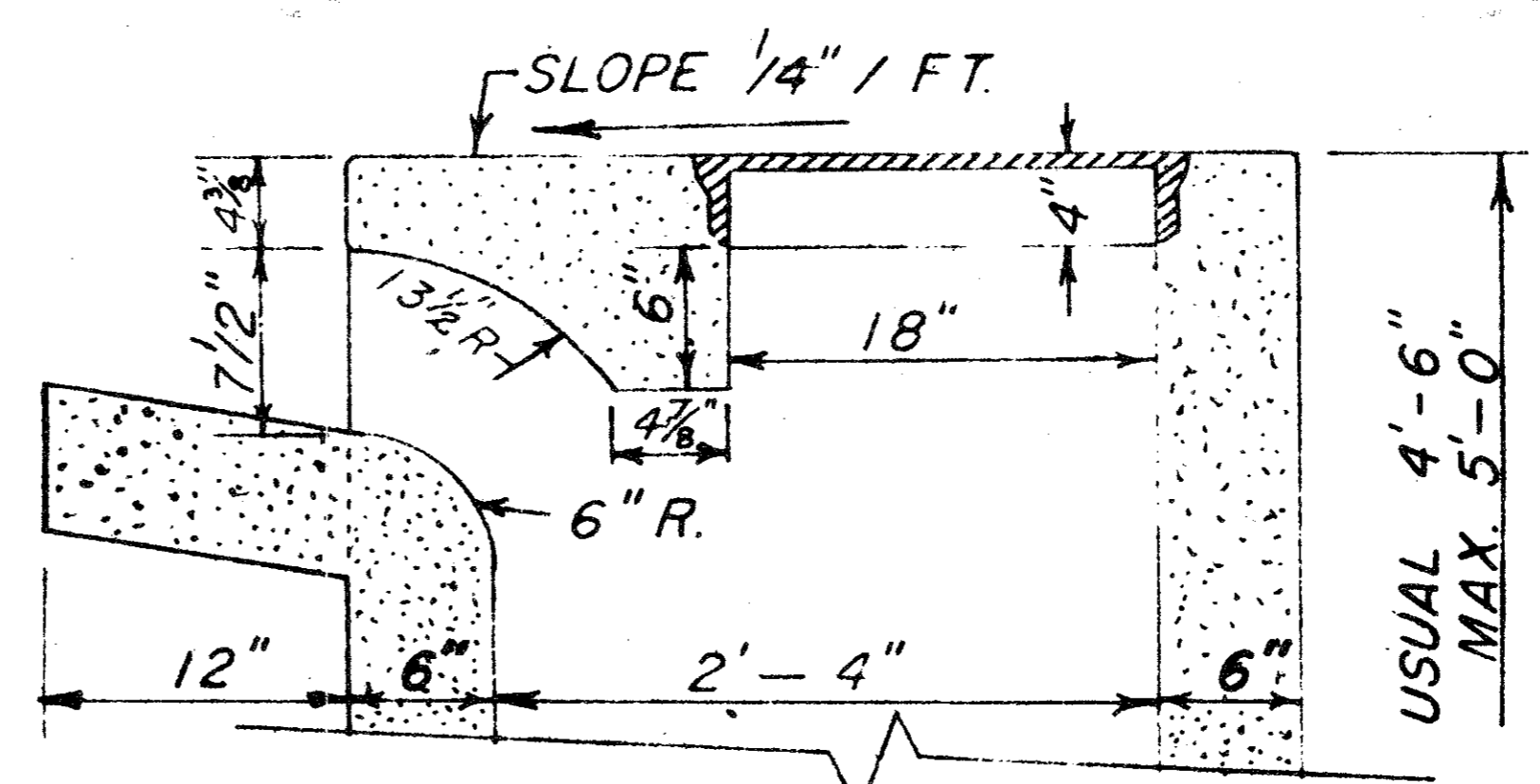
**PLAN OF INLET**



**SECTION B-B**



**SECTION A-A  
FOR 36" 48" AND 60" INLETS**



**SECTION A-A  
FOR 6, 8 AND 10 FT. INLETS**

THE ABERDEEN

**NOTE.**  
SEE FILE 424Q-7 FOR REINFORCING  
AND BEAM DESIGN

<b>DETAILS OF STANDARD RECESSED STORM SEWER INLETS AND CURBS</b>			
<b>DEPARTMENT OF PUBLIC WORKS CITY OF DALLAS, TEXAS</b>			
3-1-79	SCALE	FILE	SHEET NO.
	3/8" = 1'-0"	<b>424</b>	9 of 11