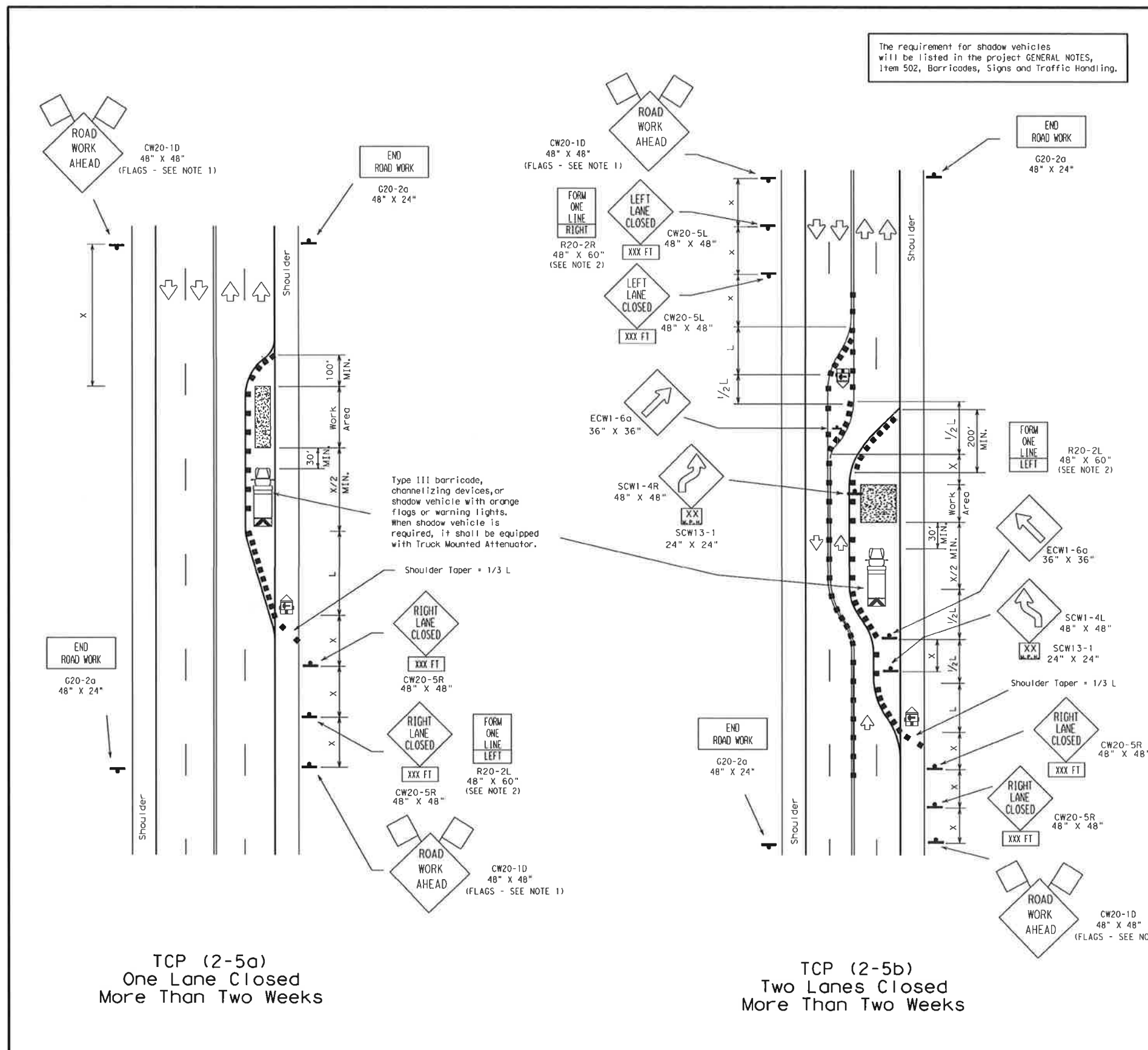


DISCLAIMER
The use of this standard is governed by the "Texas Engineering Practice Act". No warranty of any kind is made by TxDOT for any purpose whatsoever. TxDOT assumes no responsibility for the conversion of this standard to other formats or for incorrect results or damages resulting from its use.

DN:	CK:
DW:	CK:
DATE:	FILE:
1/18/10	65301-03
1/18/10	65301-03
1/18/10	65301-03
1/18/10	65301-03
1/18/10	65301-03
1/18/10	65301-03
1/18/10	65301-03
1/18/10	65301-03



The requirement for shadow vehicles will be listed in the project GENERAL NOTES, Item 502, Barricades, Signs and Traffic Handling.

LEGEND

	Type III Barricade		Channelizing Devices		Flag
	Heavy Work Vehicle		Truck Mounted Attenuator		
	Trailer Mounted Flashing Arrow Panel		Portable Changeable Message Sign		
	Flagger		Sign Post		

Posted Speed X	Formula	Minimum Desirable Taper Lengths X*			Suggested Maximum Spacing of Device		Minimum Sign Spacing Distance
		10'	11'	12'	On a Taper	On a Tangent	
30	L = WS ² / 60	150'	165'	180'	30'	60' - 75'	120'
35		205'	225'	245'	35'	70' - 90'	160'
40		265'	295'	320'	40'	80' - 100'	240'
45	L = WS	450'	495'	540'	45'	90' - 110'	320'
50		500'	550'	600'	50'	100' - 125'	400'
55		550'	605'	660'	55'	110' - 140'	500'
60		600'	660'	720'	60'	120' - 150'	* 600'
65		650'	715'	780'	65'	130' - 165'	* 700'
70	700'	770'	840'	70'	140' - 175'	* 800'	

* Conventional Roads Only
** Taper lengths have been rounded off.
L = Length of Taper (FT.) W = Width of Offset (FT.) S = Posted Speed (MPH)

TYPICAL USAGE:

MOBILE	SHORT DURATION	SHORT TERM STATIONARY	INTERMEDIATE TERM STATIONARY	LONG TERM STATIONARY

- GENERAL NOTES:
- Unless otherwise stated in the plans, flags attached to signs are REQUIRED.
 - The FORM ONE LINE LEFT (or RIGHT) sign may be used following the RIGHT (or LEFT) LANE CLOSED XXX FT sign. Spacing distance between signs should be the minimum distance indicated.
 - When the work zone will be in place more than two weeks, conflicting pavement markings shall be removed. New markings shall be installed and maintained to the satisfaction of the Engineer.
 - Downstream taper is optional. When used, it should be 100' minimum length per lane.
 - For intermediate term situations, when it is not feasible to remove and restore pavement markings, the channelization must be made dominant by using a very close spacing. This is especially important in locations of conflicting information, such as where traffic is directed over a double yellow centerline. In such locations a maximum channelizing device spacing of 10 feet is recommended. The 10 foot channelizing device spacing recommendation is intended for the area of conflicting information and not the entire work zone.

STANDARD PLANS
TEXAS DEPARTMENT OF TRANSPORTATION
Traffic Operations Division

TRAFFIC CONTROL PLAN

TCP (2-5)-03

© TxDOT December 1985	DN: LR	CK:	DN: DN	CK: MT	REG NO. 1
REVISIONS	DATE	BY	CHKD	APP'D	SHEET
8-95					
1-97					
4-98					
3-03					

APPROVED: [Signature]

Winkelmann & Associates, Inc.
CONSULTING CIVIL ENGINEERS & SURVEYORS
1000 Ross Street, Suite 305
Dallas, Texas 75202
(214) 442-7000
FAX (214) 442-7000
Texas Engineer Registration No. 89 8662-00
Professional Seal: [Seal]

TRAFFIC CONTROL PLAN
TCP (2-5)-03
THE ADDISON PARKING GARAGE
ADDISON, TEXAS

Scale: #####
Date: JULY 9, 2012
File: 65301-tcp.dwg
Project No.: 65301.01(20)

SHEET
C-4