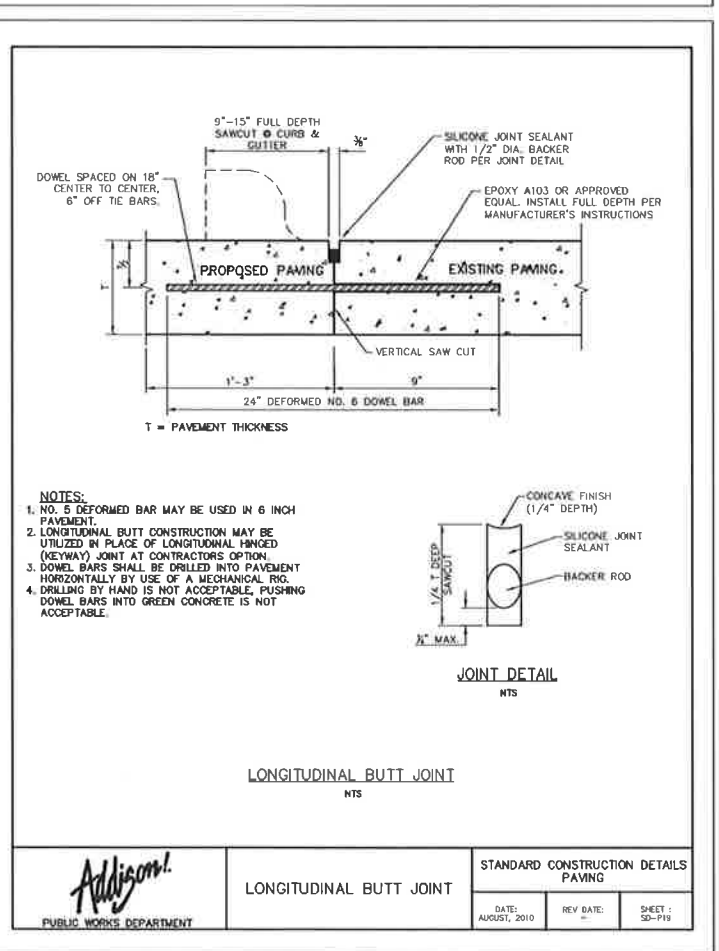
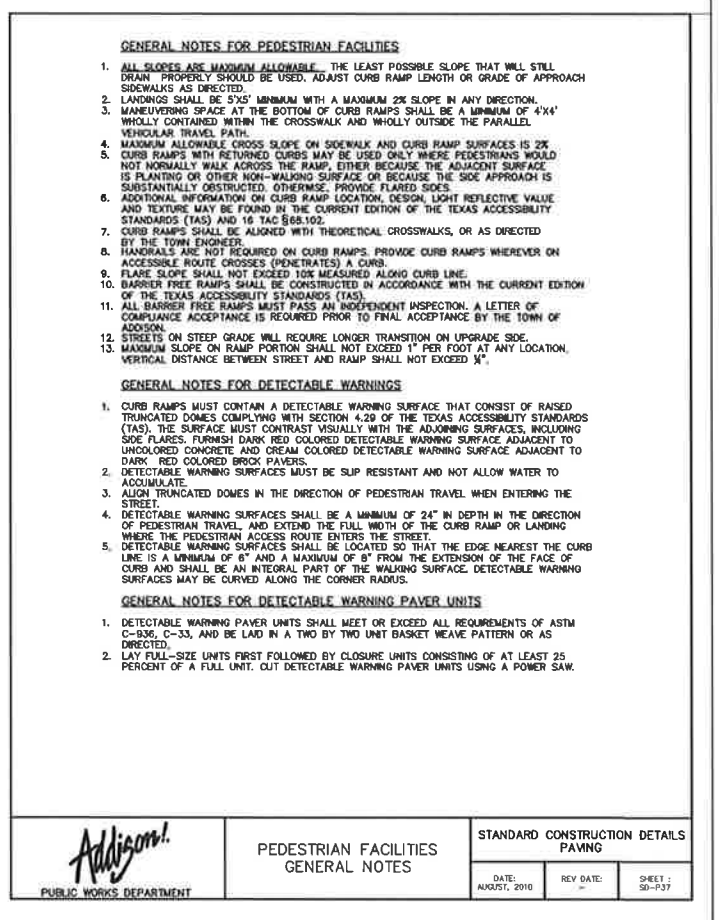
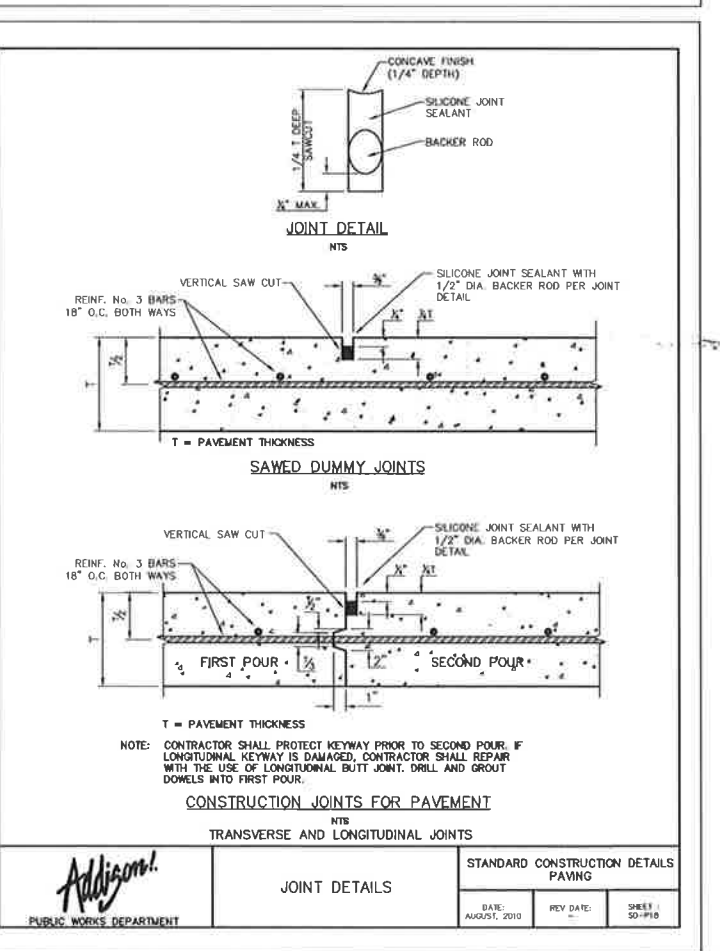
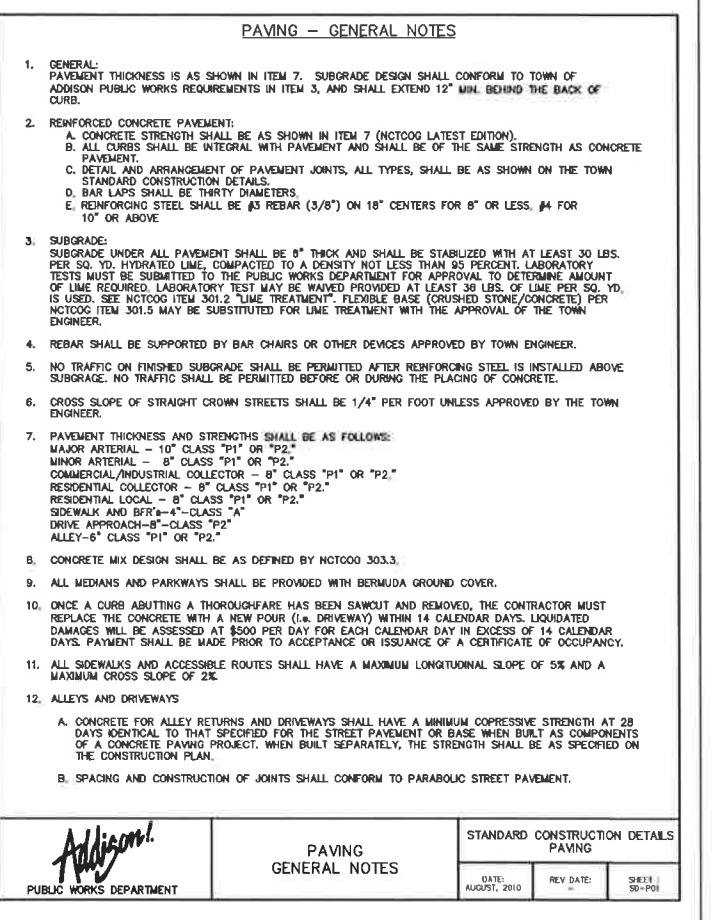


Addison! PUBLIC WORKS DEPARTMENT	STANDARD CONSTRUCTION DETAILS PAVING	
	DATE: AUGUST, 2010	REV DATE: -
	SHEET: SD-P14	



Addison! PUBLIC WORKS DEPARTMENT	STANDARD CONSTRUCTION DETAILS PAVING	
	DATE: AUGUST, 2010	REV DATE: -
	SHEET: SD-P15	



Addison! PUBLIC WORKS DEPARTMENT	STANDARD CONSTRUCTION DETAILS PAVING	
	DATE: AUGUST, 2010	REV DATE: -
	SHEET: SD-P16	

APPROVAL

REVISION

NO.

DATE

THE SEAL APPEARING ON THIS DOCUMENT WAS AUTHORIZED BY MICHAEL D. CLARK, P.E. # 63290

THESE CONSTRUCTION PLANS WERE PREPARED UNDER THE RESPONSIBLE SUPERVISION OF MICHAEL D. CLARK, LICENSED PROFESSIONAL ENGINEER, NO. 63290

Winkelmann & Associates, Inc.
CONSULTING CIVIL ENGINEERS
6505 HILLCREST ROAD, SUITE 203
DALLAS, TEXAS 75207
Texas Engineering Registration No. 10988-00
Copyright © 2012, Winkelmann & Associates, Inc.

G.W. FISHER SURVEY, ABSTRACT 0482
CITY OF ADDISON
DALLAS COUNTY, TEXAS

PELTON COMMERCIAL REAL ESTATE
8333 DOUGLAS AVENUE, #1600
DALLAS, TEXAS 75225
214-422-0800

CIVIL DETAILS

THE ADDISON PARKING GARAGE

ADDISON, TEXAS

Scale: N.T.S.

Date: JULY 9, 2012

File: 65301-civ.dwg

Project No.: 65301.01(20)

SHEET

C-7