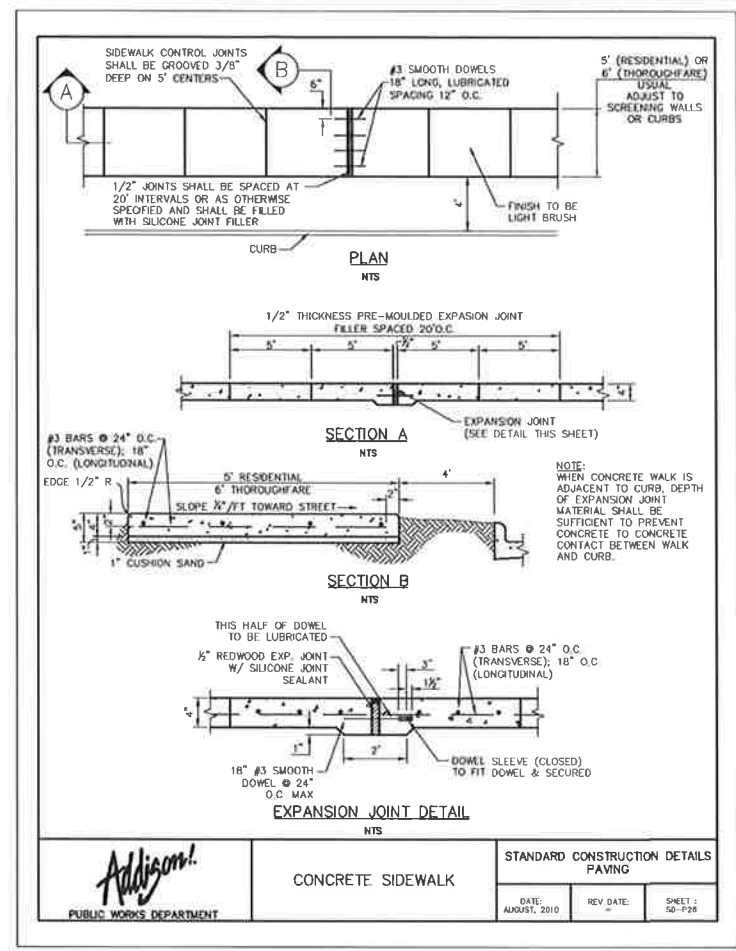
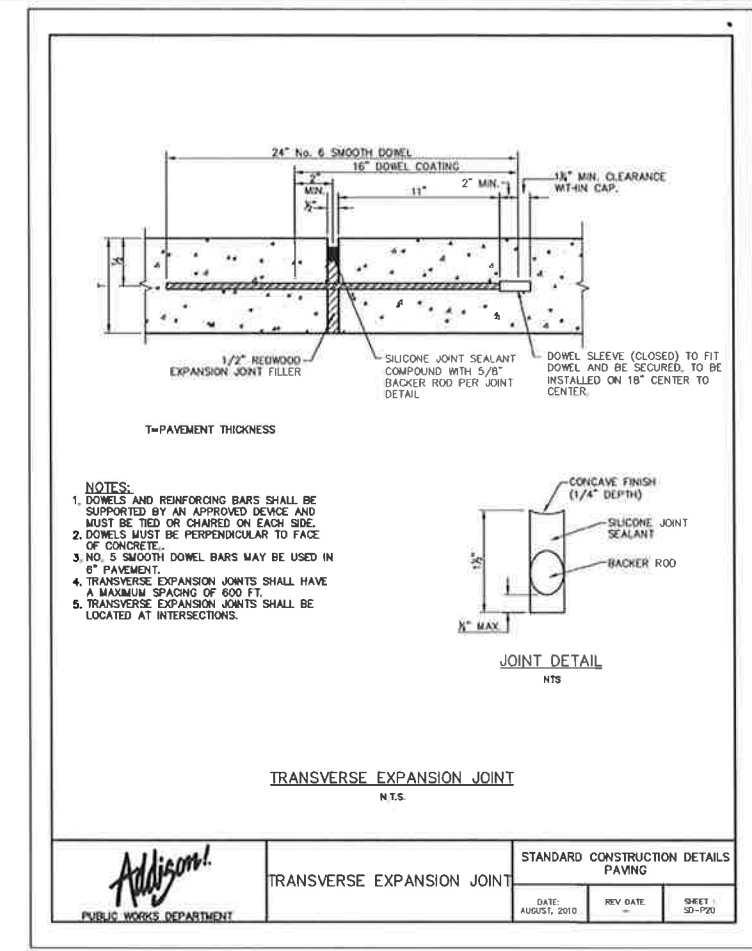


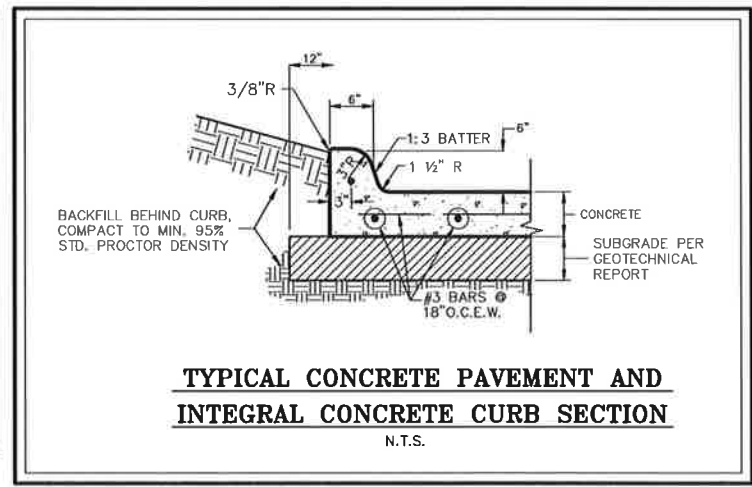
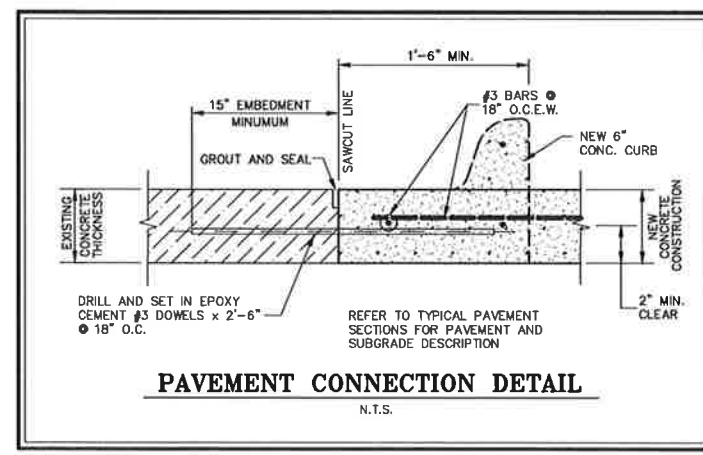
<b>Addison!</b>	<b>SIDWALK WIDENING REQUIRED AROUND OBSTACLE IN SIDEWALK &amp; JOINT DETAIL FOR SIDEWALKS ADJACENT TO CURB</b>	<b>STANDARD CONSTRUCTION DETAILS PAVING</b>
<b>PUBLIC WORKS DEPARTMENT</b>	DATE: AUGUST, 2010	REV. DATE: SHEET: 30-P29



<b>Addison!</b>	<b>CONCRETE SIDEWALK</b>	<b>STANDARD CONSTRUCTION DETAILS PAVING</b>
<b>PUBLIC WORKS DEPARTMENT</b>	DATE: AUGUST, 2010	REV. DATE: SHEET: 50-P28



<b>Addison!</b>	<b>TRANSVERSE EXPANSION JOINT</b>	<b>STANDARD CONSTRUCTION DETAILS PAVING</b>
<b>PUBLIC WORKS DEPARTMENT</b>	DATE: AUGUST, 2010	REV. DATE: SHEET: 30-P20



<b>Addison!</b>	<b>TYPICAL CONCRETE PAVEMENT AND INTEGRAL CONCRETE CURB SECTION</b>	<b>STANDARD CONSTRUCTION DETAILS PAVING</b>
<b>PUBLIC WORKS DEPARTMENT</b>	DATE: AUGUST, 2010	REV. DATE: SHEET: 30-P20

THESE CONSTRUCTION PLANS WERE PREPARED UNDER THE RESPONSIBLE SUPERVISION OF MICHAEL D. CLARK, LICENSED PROFESSIONAL ENGINEER NO. 63290

STATE OF TEXAS  
63290  
MICHAEL D. CLARK

Winkelmann & Associates, Inc.  
CONSULTING CIVIL ENGINEERS • SURVEYORS  
8700 ALBERT ROAD, SUITE 205  
DALLAS, TEXAS 75248  
TEL: 972-498-1000 FAX: 972-498-1008  
Texas Survey Registration No. 100865-00  
COPYRIGHT © 2012, Winkelmann & Associates, Inc.

G.W. FISHER SURVEY, ABSTRACT 0482  
CITY OF ADDISON  
DALLAS COUNTY, TEXAS  
PELTON COMMERCIAL REAL ESTATE  
8333 DOUGLAS AVENUE, #1600  
DALLAS, TEXAS 75225  
214-220-0600

CIVIL DETAILS  
THE ADDISON PARKING GARAGE  
ADDISON, TEXAS

Scale: N.T.S.
Date: JULY 9, 2012
File: 65301-civ.dwg
Project No.: 65301.01(20)
<b>SHEET</b>
<b>3</b>