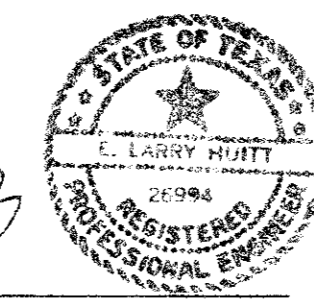


GRADING & UTILITY PLANS

for

THE QUORUM REGISTRY HOTEL CITY OF ADDISON, TEXAS

E. Larry Huitt
 E. LARRY HUITT, Registered Professional Engineer

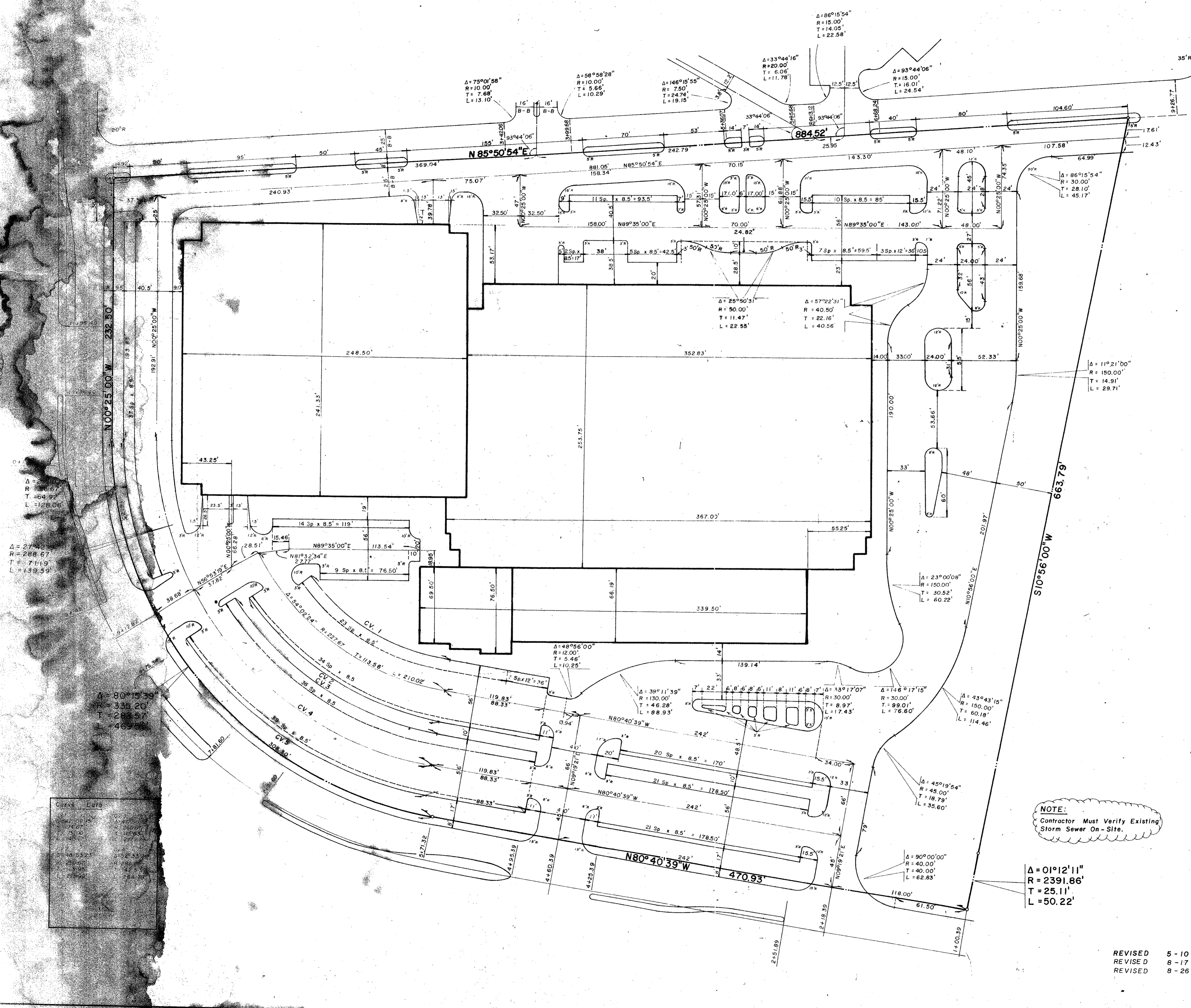


Revised 7-13-81

HUITT - ZOLLARS, INC.
 Consulting Engineers
 8730 KING GEORGE DR ADDISON TX 75001
 DALLAS, TEXAS

CITY OF ADDISON
 APPROVED
 FOR CONSTRUCTION
[Signature]
 7-13-81

NOTE: CONTRACTOR IS HEREBY INSTRUCTED TO EXERCISE CARE IN MEETING OR EXCEEDING ALL REQUIREMENTS OF BOTH NATIONAL AND LOCAL CODES AND FOR THE PURPOSES APPLICABLE TO HIS WORK AND FOR THE PURPOSES OF THESE PLANS SHALL NOT BE STRAINED TO RELIEVE HIS RESPONSIBILITY OR LIABILITY TO SUCH CODES.



$\Delta = 27^{\circ}42'$
 $R = 286.67'$
 $T = 711.9'$
 $L = 128.06'$

$\Delta = 80^{\circ}15'39''$
 $R = 335.20'$
 $T = 283.37'$
 $L = 469.65'$

Curve	Center	Radius	Length	Chord	Chord Bearing
CV.1	119.83'	88.33'	200.00'	119.83'	N89°35'00"E
CV.2	119.83'	88.33'	200.00'	119.83'	N89°35'00"E
CV.3	119.83'	88.33'	200.00'	119.83'	N89°35'00"E
CV.4	119.83'	88.33'	200.00'	119.83'	N89°35'00"E
CV.5	119.83'	88.33'	200.00'	119.83'	N89°35'00"E

NOTE:
 Contractor Must Verify Existing Storm Sewer On-Site.

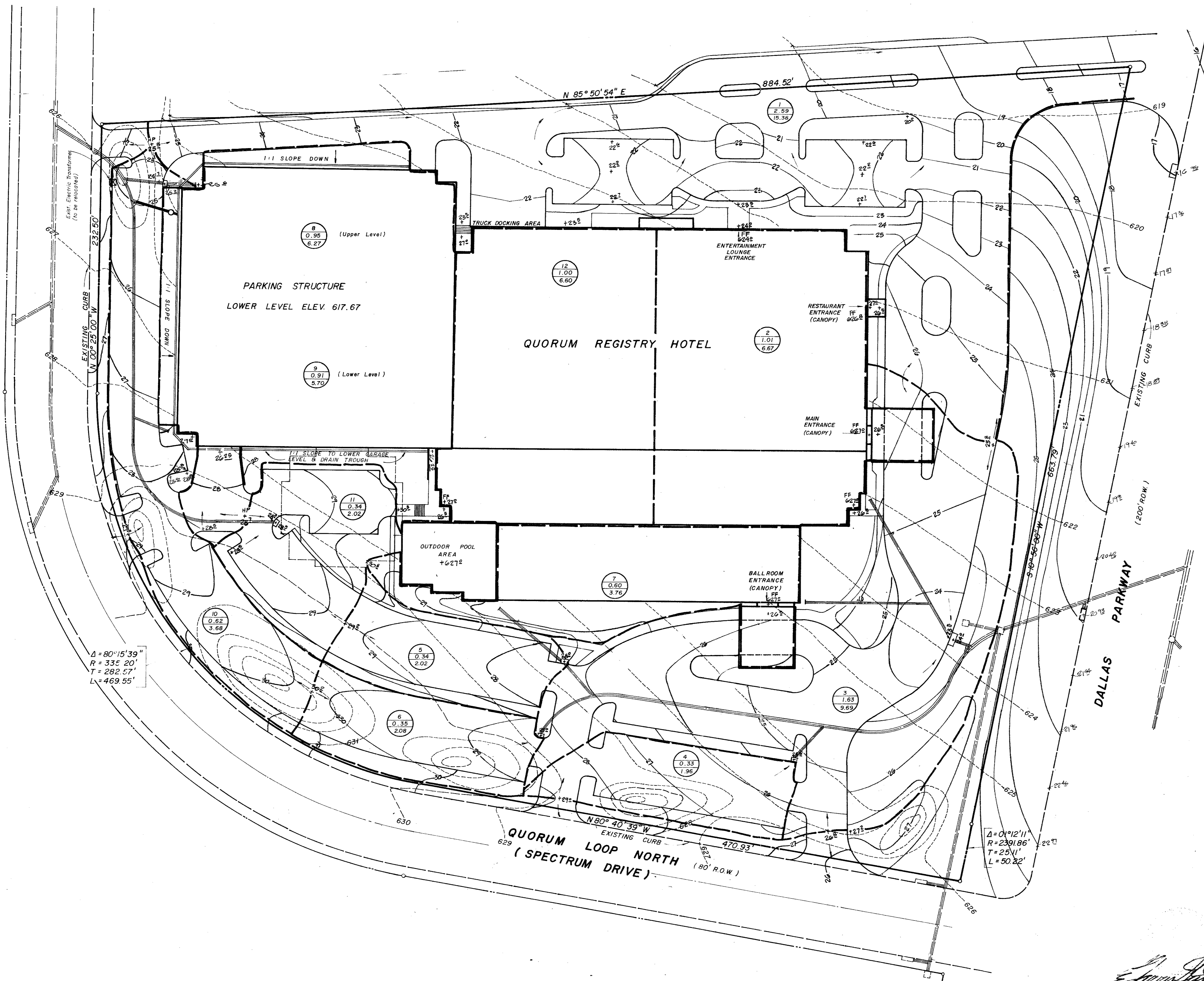
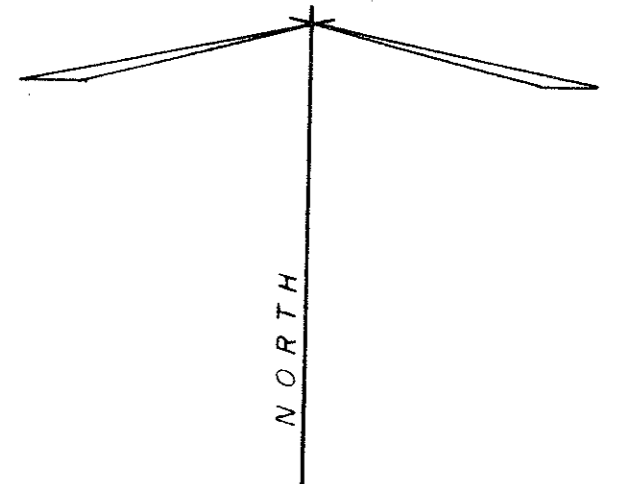
$\Delta = 01^{\circ}12'11''$
 $R = 2391.86'$
 $T = 25.11'$
 $L = 50.22'$

RECEIVED
 AUG 30 1982

KRAUS-ANDERSON CONSTRUCTION CO.
 The Registry Hotel
 Job #901

REVISED 5-10-82
 REVISED 8-17-82
 REVISED 8-26-82

DIMENSION CONTROL						
THE QUORUM REGISTRY HOTEL						
THE REGISTRY HOTEL CORPORATION						
16250 DALLAS N. PARKWAY, SUITE 105, DALLAS, TEXAS 75248						
CITY OF ADDISON, TEXAS						
DESIGN	DRAWN	DATE	SCALE	NOTES	FILE	NO.
HUTT-ZOLLARS, INC.			1"=40'			
6750 KING GEORGE DR. SUITE 121 DALLAS, TEXAS 75234						
Project No. 82118						



DRAINAGE CALCULATIONS

Area No.	ft. min.	C	I in./hr.	A ac.	Q cfs.
1	10	0.90	6.6	2.59	15.36
2	"	1.00	"	1.01	6.67
3	"	0.90	"	1.63	9.69
4	"	0.90	"	0.33	1.96
5	"	0.90	"	0.34	2.02
6	"	0.90	"	0.35	2.08
7	"	0.9	"	0.60	3.76
8	"	1.00	"	0.95	6.27
9	"	0.95	"	0.91	5.70
10	"	0.90	"	0.62	3.68
11	"	0.90	"	0.34	2.02
12	10	1.00	6.6	1.00	6.60

$\Delta = 80^{\circ}15'39''$
 $R = 335'20''$
 $T = 282.57'$
 $L = 469.55'$

$\Delta = 0^{\circ}12'11''$
 $R = 2391.86'$
 $T = 25'11''$
 $L = 50.22'$

CITY OF ADDISON
APPROVED
 FOR CONSTRUCTION
 BUILDING DEPARTMENT

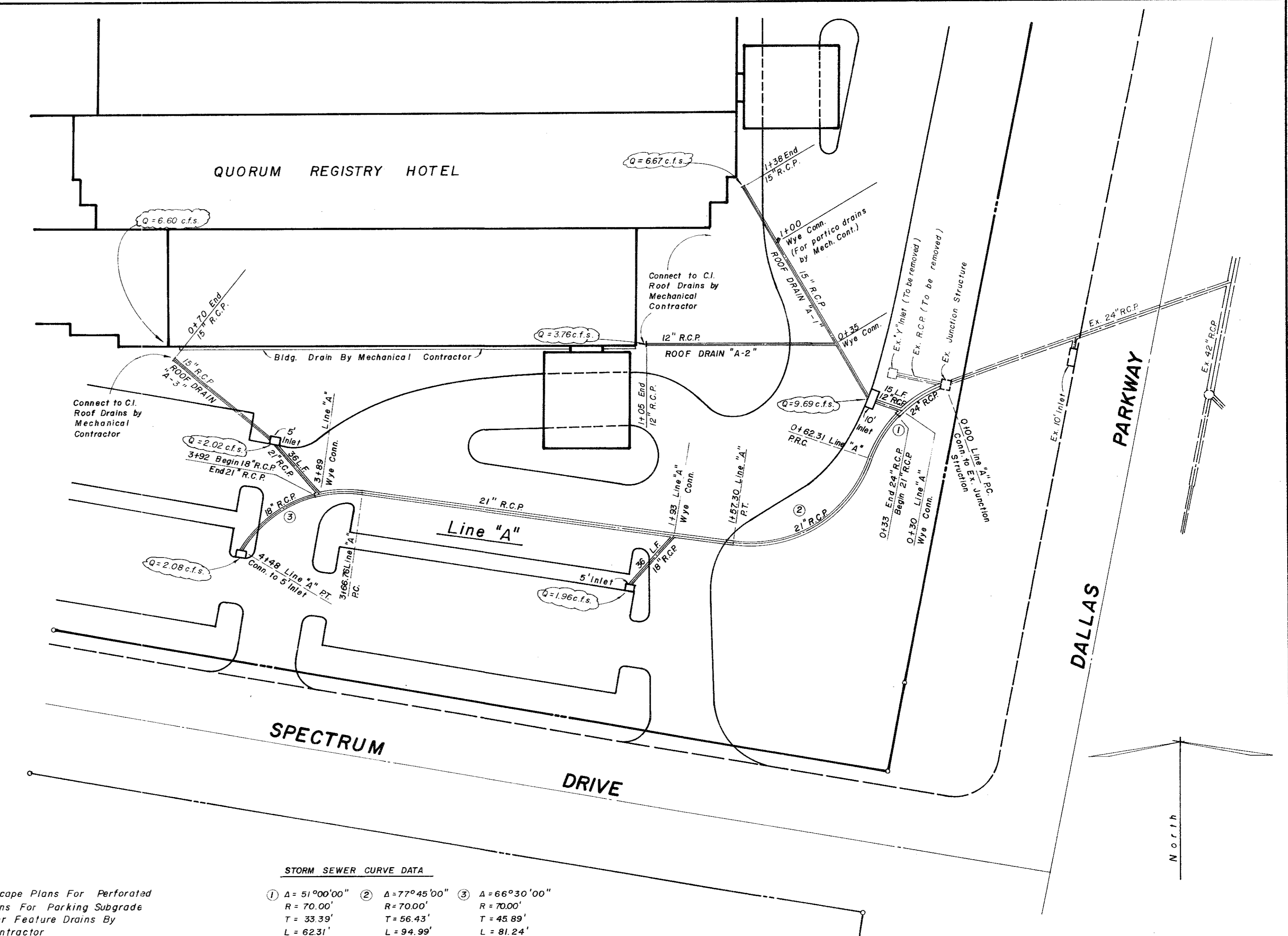
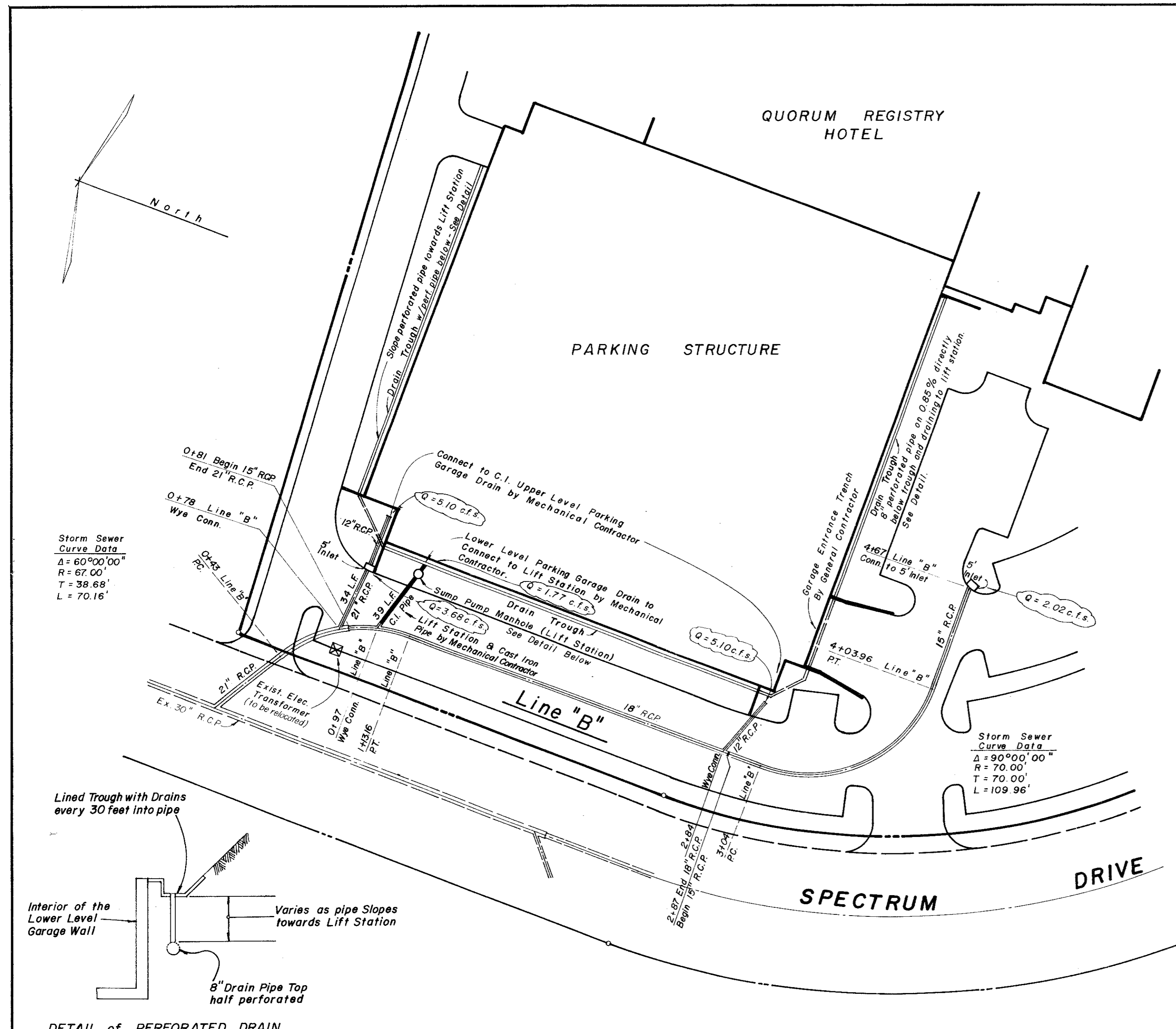
NOTE: CONTRACTOR IS HEREBY INSTRUCTED TO EXERCISE CARE IN REVIEWING ALL REQUIREMENTS OF BOTH NATIONAL AND LOCAL CODES AND FOR ORDINANCES APPLICABLE TO HIS WORK. APPROVAL OF THESE DOCUMENTS SHALL NOT BE CONSTRUED TO RELIEVE RESPONSIBILITY OR IMPLY WARRANTY TO SUCH CODES.

GRADING & DRAINAGE PLAN
THE QUORUM REGISTRY HOTEL
 THE REGISTRY HOTEL CORPORATION
 16250 DALLAS NORTH PARKWAY, SUITE 105
 DALLAS, TEXAS 75248

CITY OF ADDISON, TEXAS

DESIGN	DRAWN	DATE	SCALE	NOTES	FILE	NO.
HUITT-ZOLLARS, INC.	GEORGE DR.	JUNE, 81	1" = 40'			4 of 6

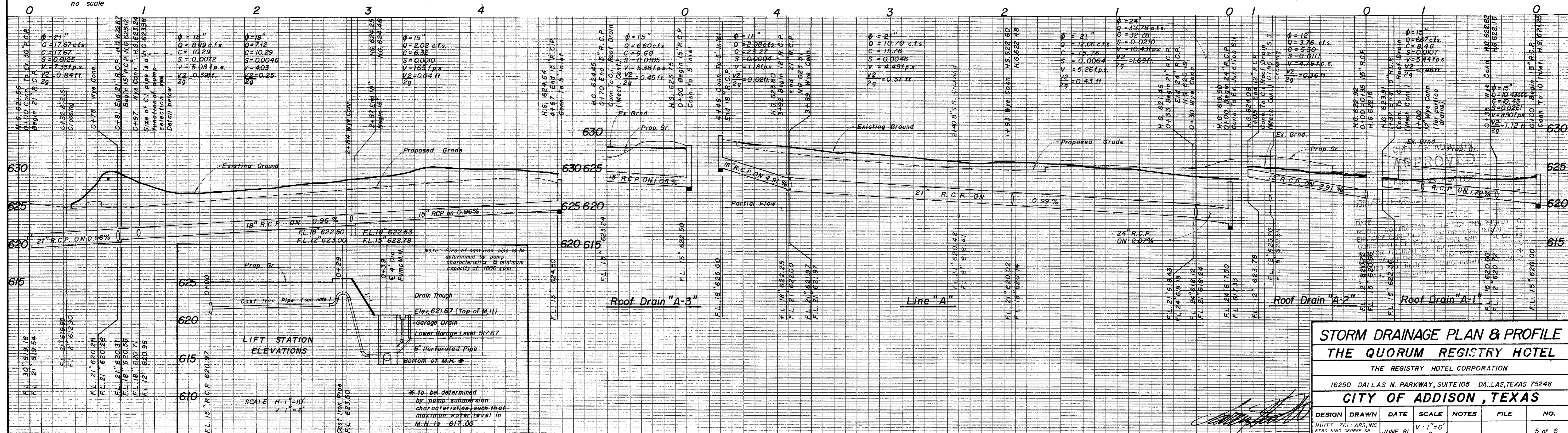
PROJECT NO. 81145



NOTE:
See Landscape Plans For Perforated
Pipe Drains For Parking Subgrade
And Water Feature Drains By
Utility Contractor

STORM SEWER CURVE DATA

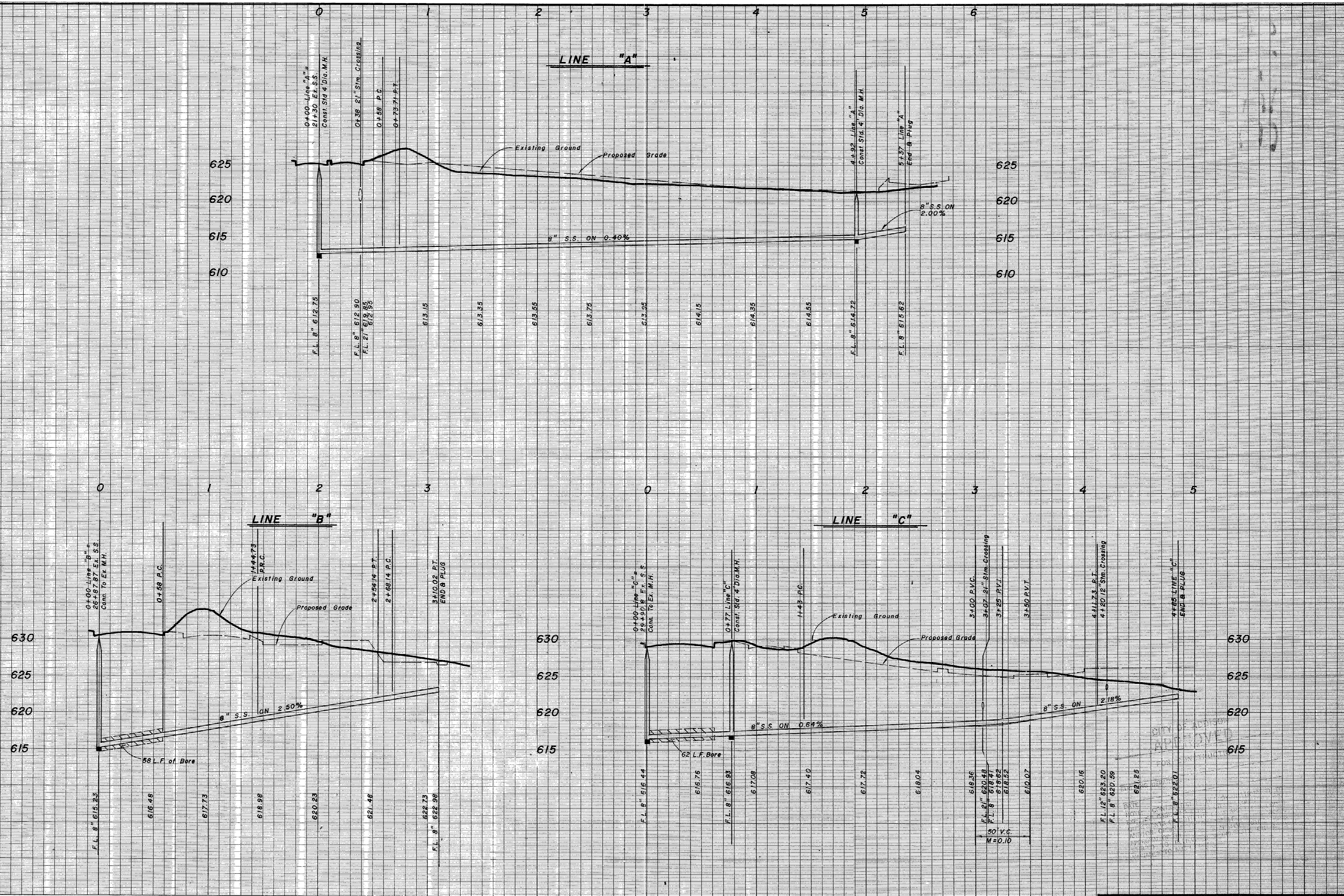
① Δ = 51°00'00"	② Δ = 77°45'00"	③ Δ = 66°30'00"
R = 70.00'	R = 70.00'	R = 70.00'
T = 33.33'	T = 56.43'	T = 45.89'
L = 62.31'	L = 94.99'	L = 81.24'



STORM DRAINAGE PLAN & PROFILE
THE QUORUM REGISTRY HOTEL
THE REGISTRY HOTEL CORPORATION
16250 DALLAS N. PARKWAY, SUITE 105 DALLAS, TEXAS 75248
CITY OF ADDISON, TEXAS

DESIGN DRAWN	DATE	SCALE	NOTES	FILE	NO.
HUTTY, ZOLLARS, INC. 8135 KING GEORGE ST. DALLAS, TEXAS 75225	JUNE, 81	V: 1"=6' H: 1"=40'			5 of 6

Project N 2. 81145



SANITARY SEWER PROFILES
THE QUORUM REGISTRY HOTEL

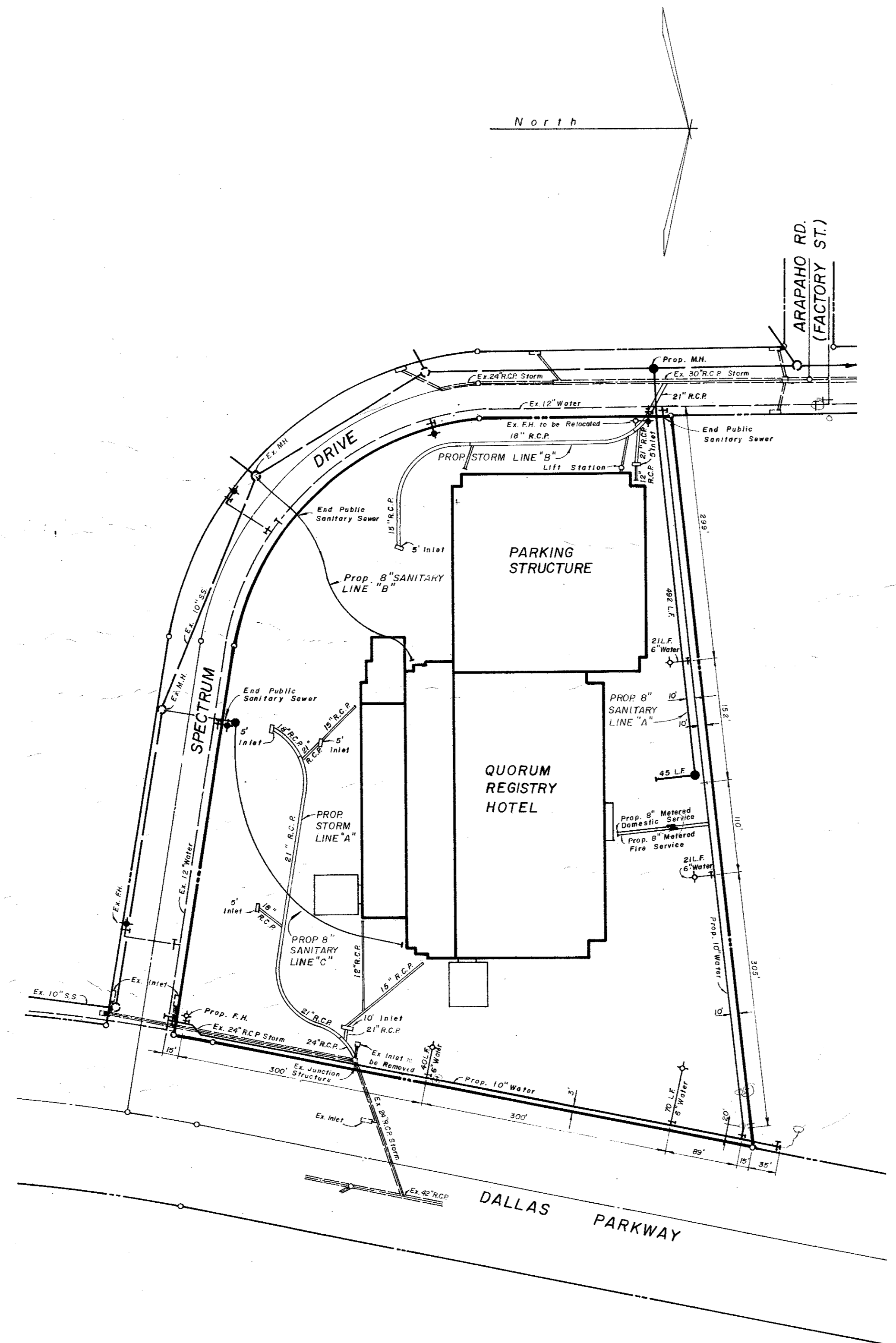
THE REGISTRY HOTEL CORPORATION
16250 DALLAS N. PARKWAY, SUITE 105 DALLAS, TEXAS 75248

CITY OF ADDISON, TEXAS

DESIGN	DRAWN	DATE	SCALE	NOTES	FILE	NO.
		JUNE, 81	V: 1"=6' H: 1"=40'			6 of 6

Notes

1. For Additional Sanitary Sewer & Water Line Plan Information See Sheet 3 of 6.
2. For Sanitary Sewer Profiles See Sheet 6 of 6.
3. For Additional Storm Sewer Information and Profiles See Sheet 5 of 6.



CITY OF ADDISON
APPROVED
 FOR CONSTRUCTION

BUILDING DEPARTMENT

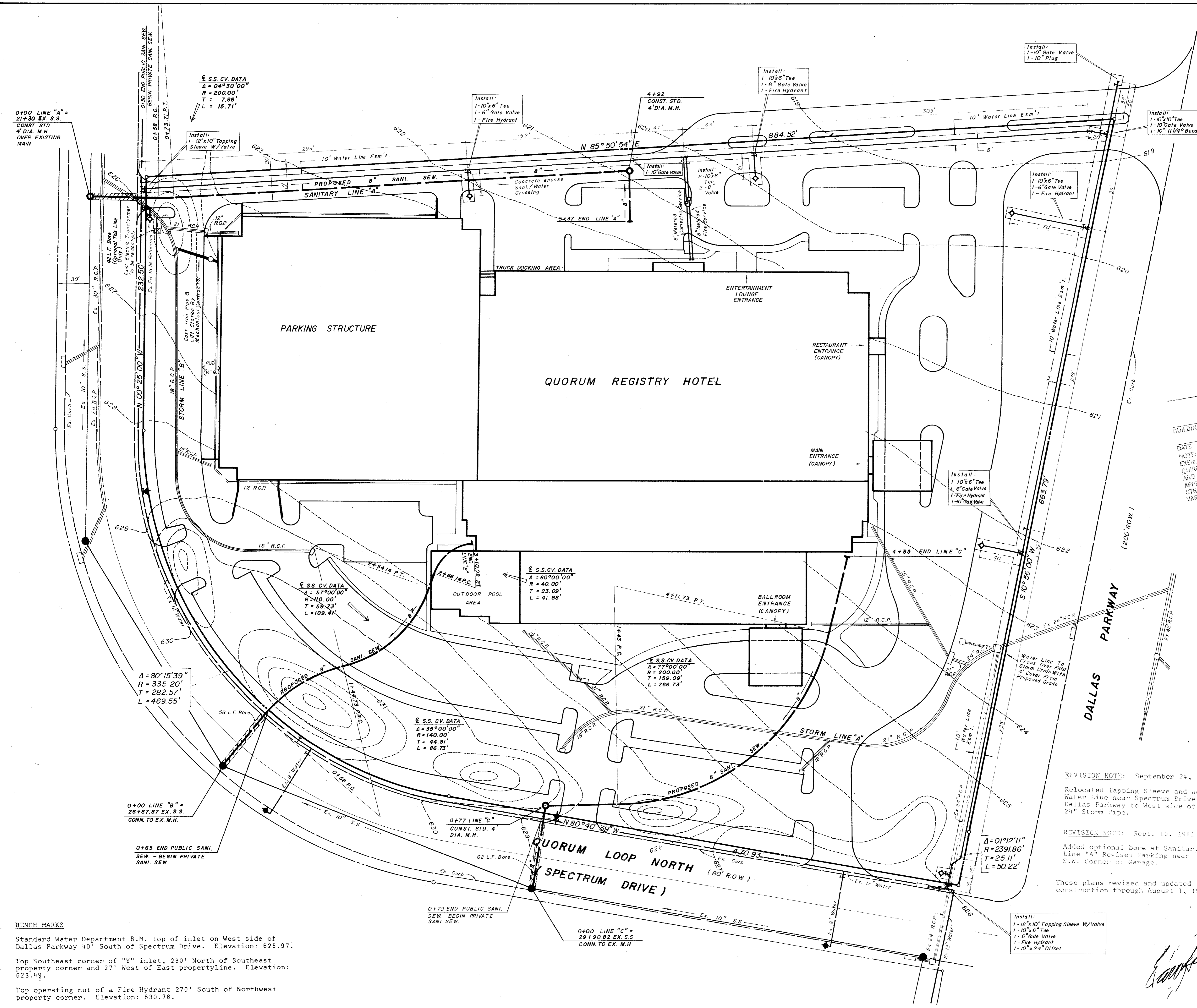
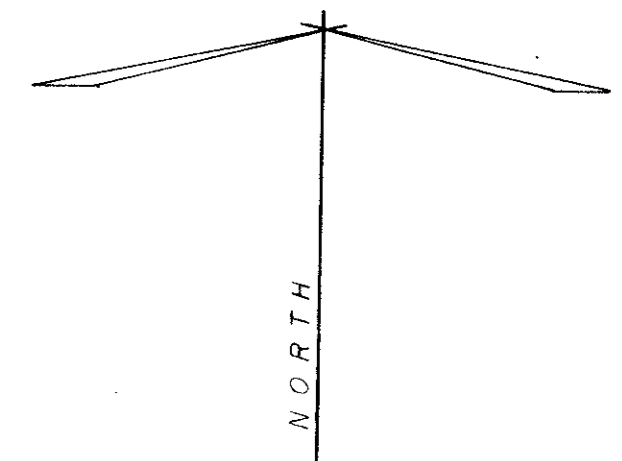
DATE: _____
 NOTE: CONTRACTOR IS HEREBY INSTRUCTED TO EXERCISE CARE IN FIELD AND OBSERVING ALL REQUIREMENTS OF BOTH FEDERAL, STATE, LOCAL CODES AND FOR ORDINANCES APPLICABLE TO HIS WORK. APPROVAL OF THESE DRA. SHALL NOT BE CONSTRUED TO IMPLY MERCHANTABILITY OR IMPLY VARIANCE TO ANY C. C.S.

REVISION NOTE: September 24, 1981
 Relocated Tapping Sleeve and adjacent Water Line near Spectrum Drive at Dallas Parkway to West side of existing 24" Storm Pipe.

These plans revised and updated for construction through August 1, 1981.

UTILITY PLAN						
THE QUORUM REGISTRY HOTEL						
THE REGISTRY HOTEL CORPORATION						
16250 DALLAS N. PARKWAY, SUITE 105 DALLAS, TEXAS 75248						
CITY OF ADDISON, TEXAS						
DESIGN	DRAWN	DATE	SCALE	NOTES	FILE	NO.
		JUNE, 81	1" = 100'			2 of 6

Handwritten signature



**CITY OF ADDISON
APPROVED**
FOR CONSTRUCTION

BUILDING DEPARTMENT

DATE: _____
NOTE: CONTRACTOR IS HEREBY INSTRUCTED TO EXERCISE CARE IN FIELD FOR EXCEEDING ALL REQUIREMENTS OF FEDERAL, STATE AND LOCAL CODES AND/OR ORDINANCES APPLICABLE TO HIS WORK. APPROVAL OF THESE PLANS SHALL NOT BE CONSTRUED TO BE A WARRANTY OR LIABILITY OR IMPLY VARIANCE TO SUCH.

- NOTES-
1. Water lines shall be located a minimum of 48" depth.
 2. All materials and workmanship to conform to City of Addison standards.
 3. Sanitary Sewer under existing Spectrum Drive to be constructed by bore.
 4. Bored sewer lines to be enclosed in welded steel casing. Outside casing to be grouted.
 5. Sanitary manholes to be poured in place.
 6. Water and sewer crossing to be concrete encased.
 7. Water and sewer embedment to consist of 6" sand below, around and above pipe.

REVISION NOTE: September 24, 1981
Relocated Tapping Sleeve and adjacent Water Line near Spectrum Drive at Dallas Parkway to West side of existing 24" Storm Pipe.

REVISION NOTE: Sept. 10, 1981
Added optional bore at Sanitary Line "A" Revised Parking near S.W. Corner of Garage.

These plans revised and updated for construction through August 1, 1981.

UTILITY PLAN						
THE QUORUM REGISTRY HOTEL						
THE REGISTRY HOTEL CORPORATION 16250 DALLAS NORTH PARKWAY, SUITE 105 DALLAS, TEXAS 75248						
CITY OF ADDISON, TEXAS						
DESIGN	DRAWN	DATE	SCALE	NOTES	FILE	NO.
HUITT-ZOLLARS, INC.	HUITT-ZOLLARS, INC.	JUNE, 81	1" = 40'			3 of 6
8150 KING GEORGE DR. SUITE 101 DALLAS, TEXAS 75230 PROJECT NO. 51145						

BENCH MARKS

Standard Water Department B.M. top of inlet on West side of Dallas Parkway 40' South of Spectrum Drive. Elevation: 625.97.

Top Southeast corner of "Y" inlet, 230' North of Southeast property corner and 27' West of East propertyline. Elevation: 623.49.

Top operating nut of a Fire Hydrant 270' South of Northwest property corner. Elevation: 630.78.