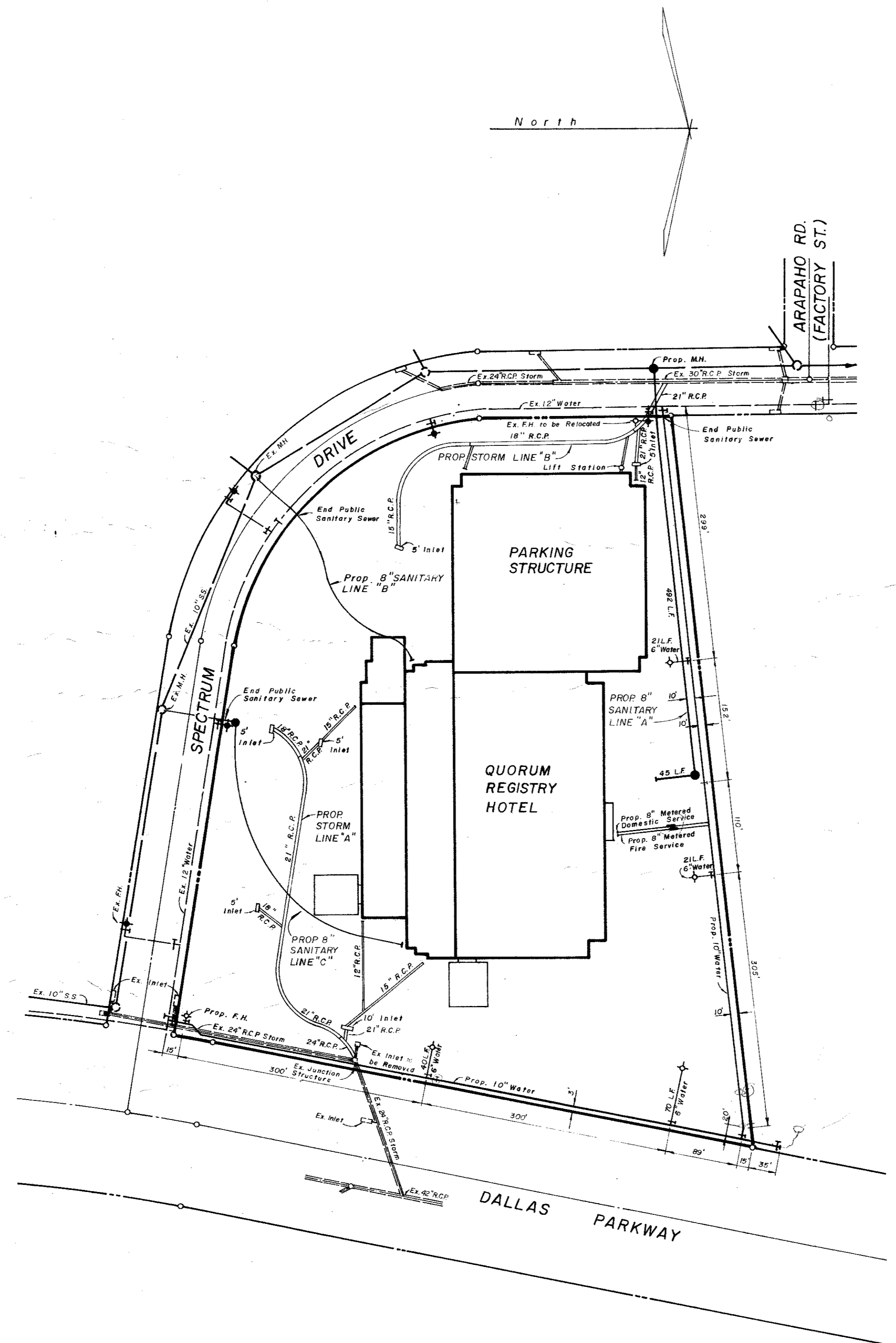


Notes

1. For Additional Sanitary Sewer & Water Line Plan Information See Sheet 3 of 6.
2. For Sanitary Sewer Profiles See Sheet 6 of 6.
3. For Additional Storm Sewer Information and Profiles See Sheet 5 of 6.



CITY OF ADDISON
APPROVED
 FOR CONSTRUCTION

BUILDING DEPARTMENT

DATE: _____
 NOTE: CONTRACTOR IS HEREBY INSTRUCTED TO EXERCISE CARE IN FIELD AND OBSERVING ALL REQUIREMENTS OF BOTH FEDERAL, STATE, LOCAL CODES AND FOR ORDINANCES APPLICABLE TO HIS WORK. APPROVAL OF THESE DRA. SHALL NOT BE CONSTRUED TO IMPLY RESPONSIBILITY OR IMPLY VARIANCE TO ANY CODES.

REVISION NOTE: September 24, 1981
 Relocated Tapping Sleeve and adjacent Water Line near Spectrum Drive at Dallas Parkway to West side of existing 24" Storm Pipe.

These plans revised and updated for construction through August 1, 1981.

UTILITY PLAN						
THE QUORUM REGISTRY HOTEL						
THE REGISTRY HOTEL CORPORATION						
16250 DALLAS N. PARKWAY, SUITE 105 DALLAS, TEXAS 75248						
CITY OF ADDISON, TEXAS						
DESIGN	DRAWN	DATE	SCALE	NOTES	FILE	NO.
HUIYI-ZOLLARS, INC. 8736 KING GEORGE SUITE 121 DALLAS, TEXAS 75233		JUNE, 81	1" = 100'			2 of 6

Handwritten signature/initials