

Station	Station	Elevation
100	157.439	982.641
101	100.000	100.000
102	417.820	100.000
103	989.521	208.048
104	749.137	540.639
105	821.090	811.075
106	833.855	982.422
107	829.989	1,081.867
108	440.393	1,039.401

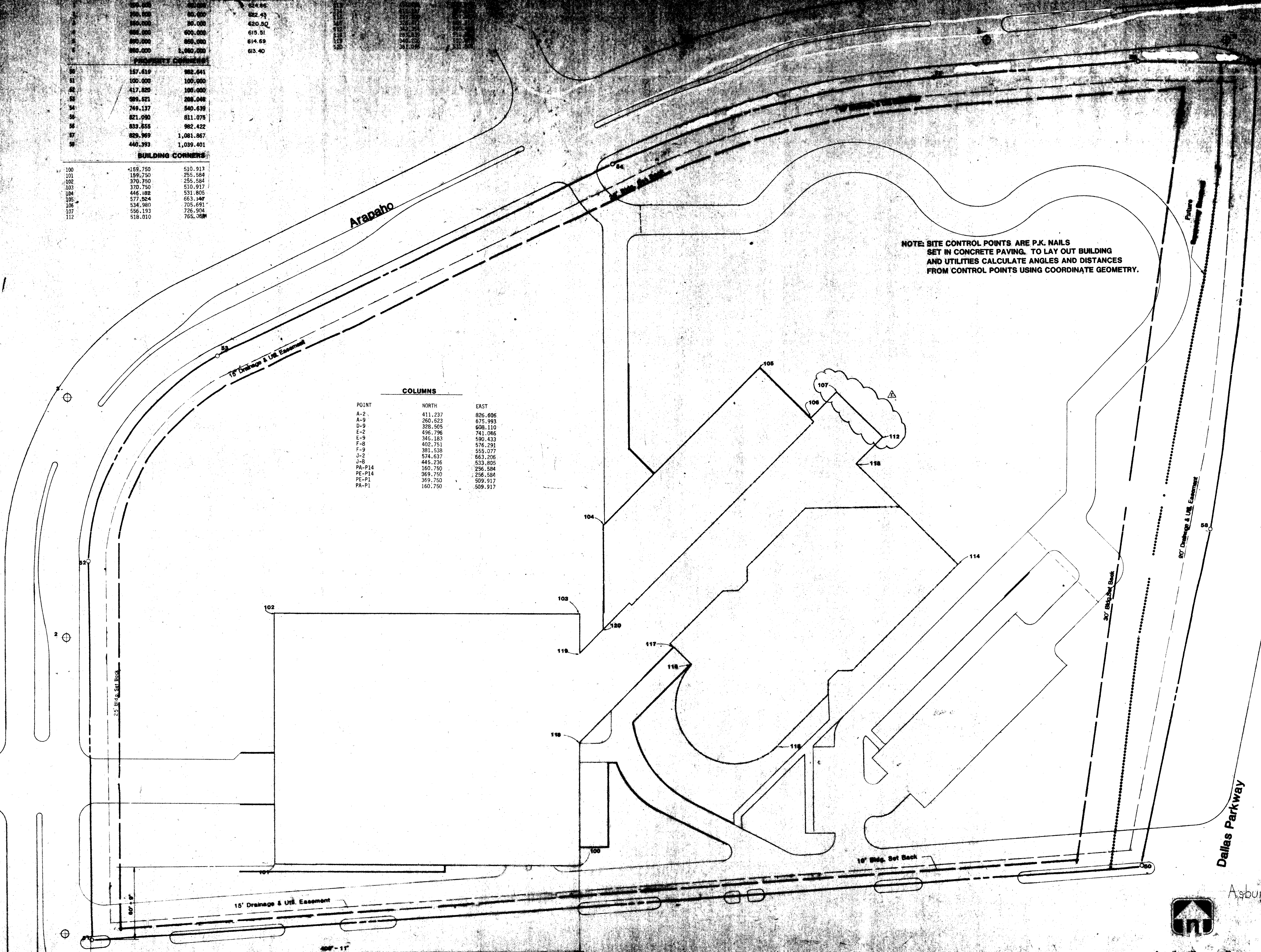
BUILDING CORNERS

100	-159.750	510.917
101	159.750	255.584
102	370.750	255.584
103	370.750	510.917
104	446.182	531.805
105	577.524	663.147
106	534.980	705.691
107	556.193	726.904
112	518.010	765.388

COLUMNS

POINT	NORTH	EAST
A-2	411.237	825.606
A-9	260.623	675.993
D-9	328.505	608.110
E-2	496.796	741.046
E-9	346.183	590.433
F-8	402.751	576.291
F-9	381.538	555.077
J-2	574.637	663.206
J-8	445.236	533.805
PA-P14	160.750	256.584
PE-P14	369.750	256.584
PE-P1	369.750	509.917
PA-P1	160.750	509.917

NOTE: SITE CONTROL POINTS ARE P.K. NAILS SET IN CONCRETE PAVING. TO LAY OUT BUILDING AND UTILITIES CALCULATE ANGLES AND DISTANCES FROM CONTROL POINTS USING COORDINATE GEOMETRY.



project: THE COLONADE
 One - Arapaho, Fort Worth, Texas
 M.P.C. Architects, Inc.

job no: 100-117
 revisions: 1

DATE: 10/1/88

SCALE: 1" = 10'

Asbuilt

100-117

