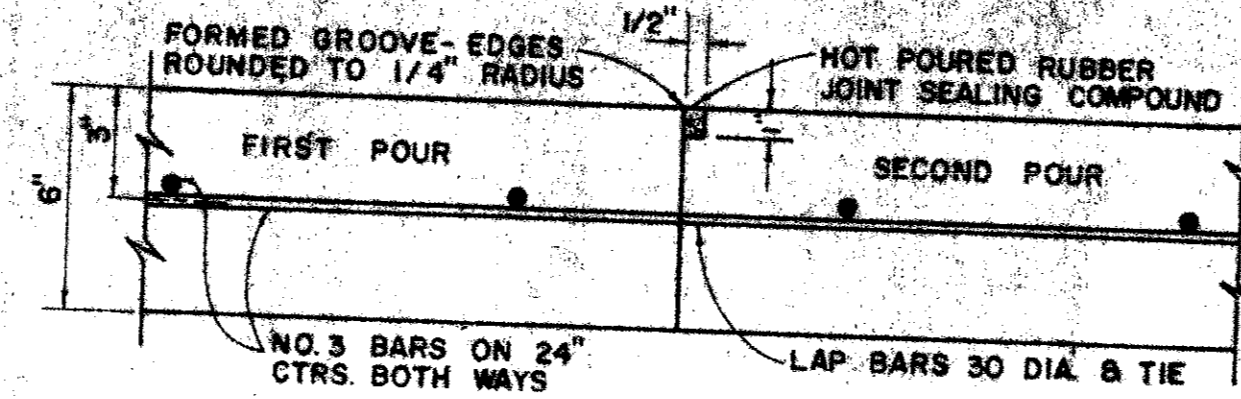


1 - PAVEMENT SECTION

NOT TO SCALE

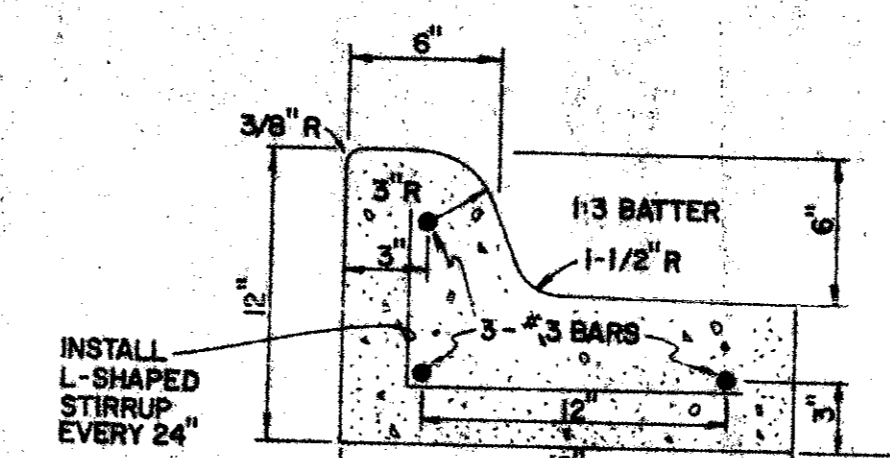
LIME STABILIZED SUBGRADE (6% BY WT.)
ROAD BASE MATERIAL MAY BE SUBSTITUTED FOR LIME STABILIZED SUBGRADE. BASE MATERIAL SHALL CONFORM TO GRADE C OR D BASE MATERIAL AS SPECIFIED BY AASHTO DESIGNATION M-14Z.

NOTE: FOR CONCRETE PAVING SAWED JOINT SPACING SHALL BE 12.5' FOR LONGITUDINAL JOINTS AND 15' - 20' FOR TRANSVERSE JOINTS.



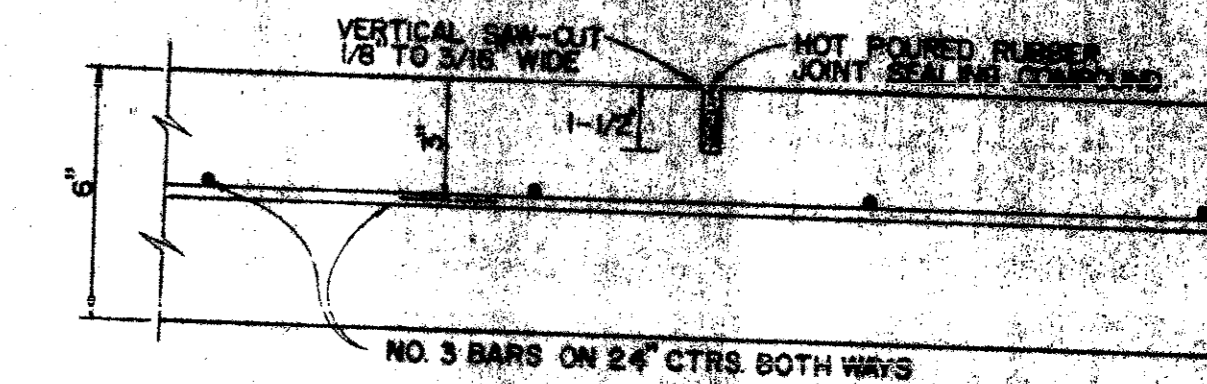
2 - CONSTRUCTION JOINT

NOT TO SCALE



3 - CONCRETE CURB & GUTTER

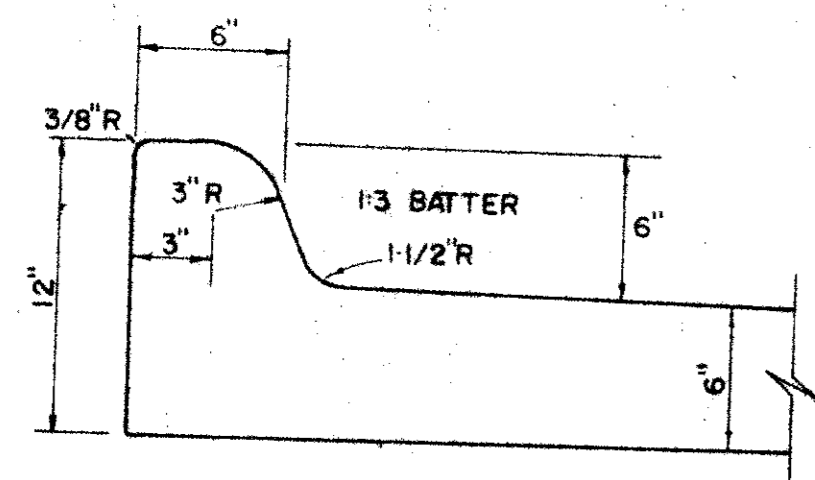
NOT TO SCALE



4 - SAWED JOINT

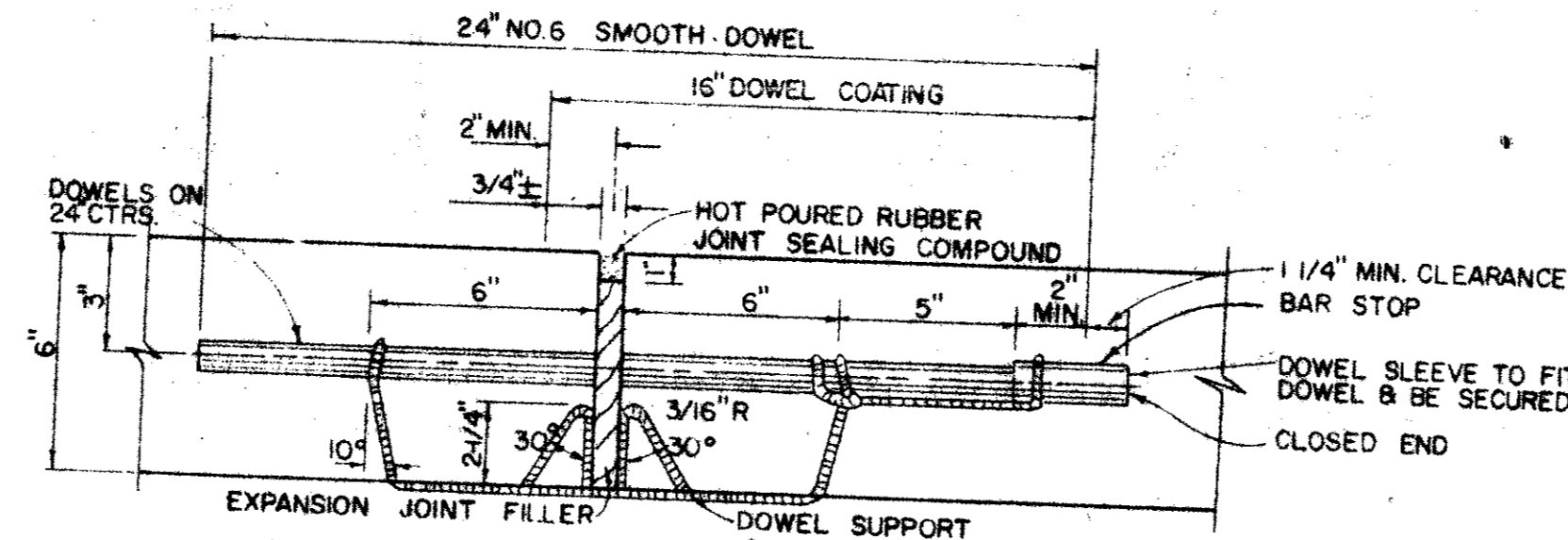
NOT TO SCALE

LOCATE SAWED JOINTS AT 20' INTERVALS EACH WAY. MATCH JOINTS IN EXIST. PAVING. SEE LANDSCAPE PLAN FOR SPECIAL JOINT LAYOUT IN FRONT ENTRANCE PAVING.



5 - INTEGRAL CURB DETAIL

NOT TO SCALE

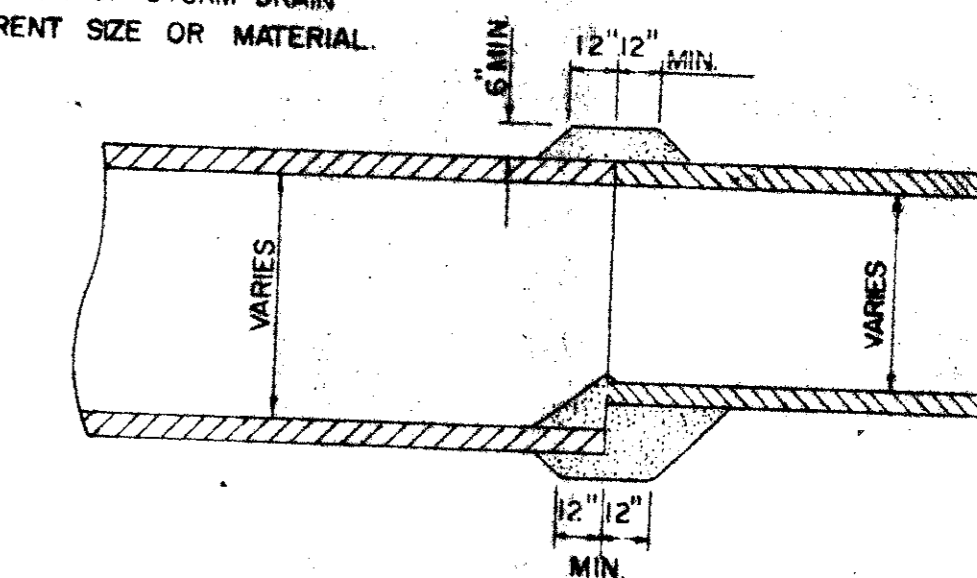


6 - TRANSVERSE EXPANSION JOINT

NOT TO SCALE

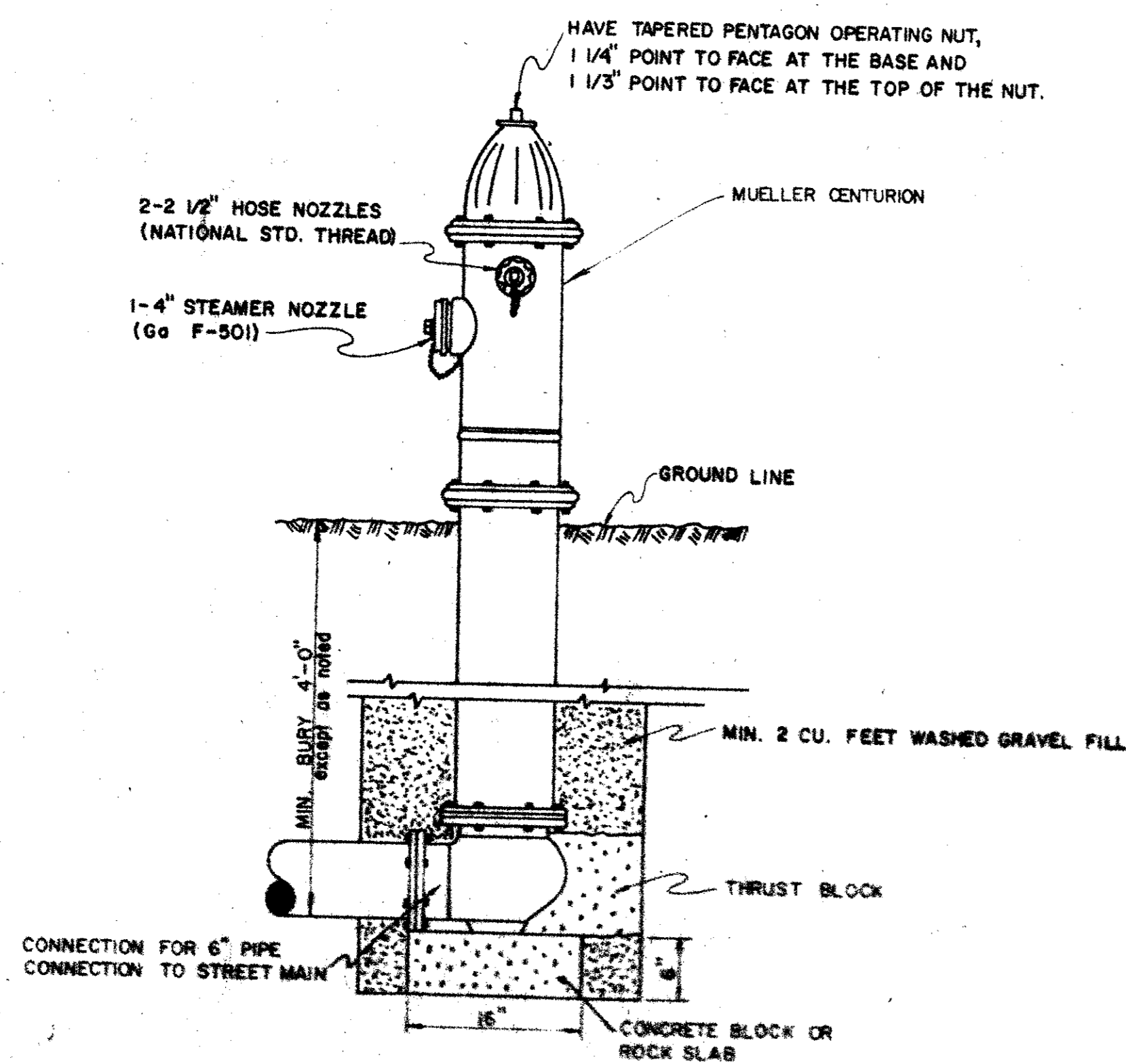
LOCATE EXPANSION JOINTS AS SHOWN ON PLANS. CONTRACTOR MAY SUBSTITUTE ANY PREMANUFACTURED EXPANSION JOINT SYSTEM, WHICH HAS A 3/4\"/>

NOTE: USE FOR CONNECTION OF STORM DRAIN PIPES OF DIFFERENT SIZE OR MATERIAL.



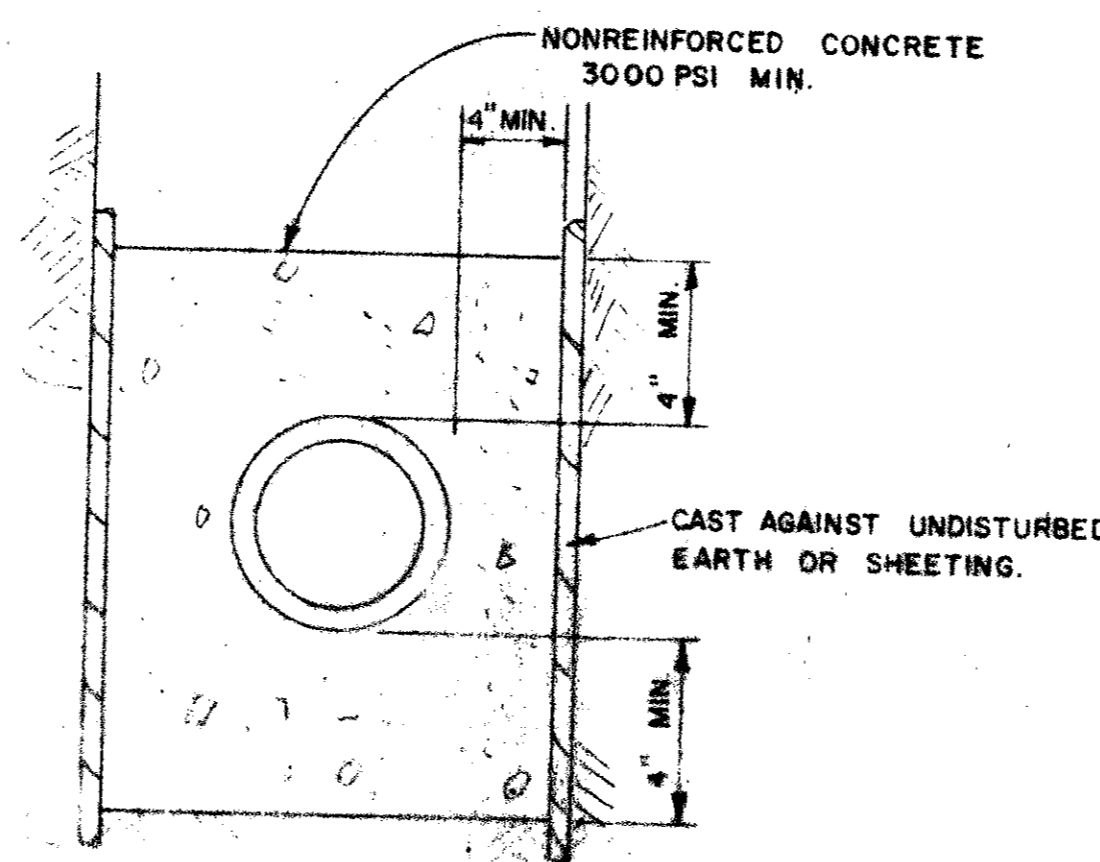
7 - CONCRETE COLLAR CONNECTOR

NOT TO SCALE



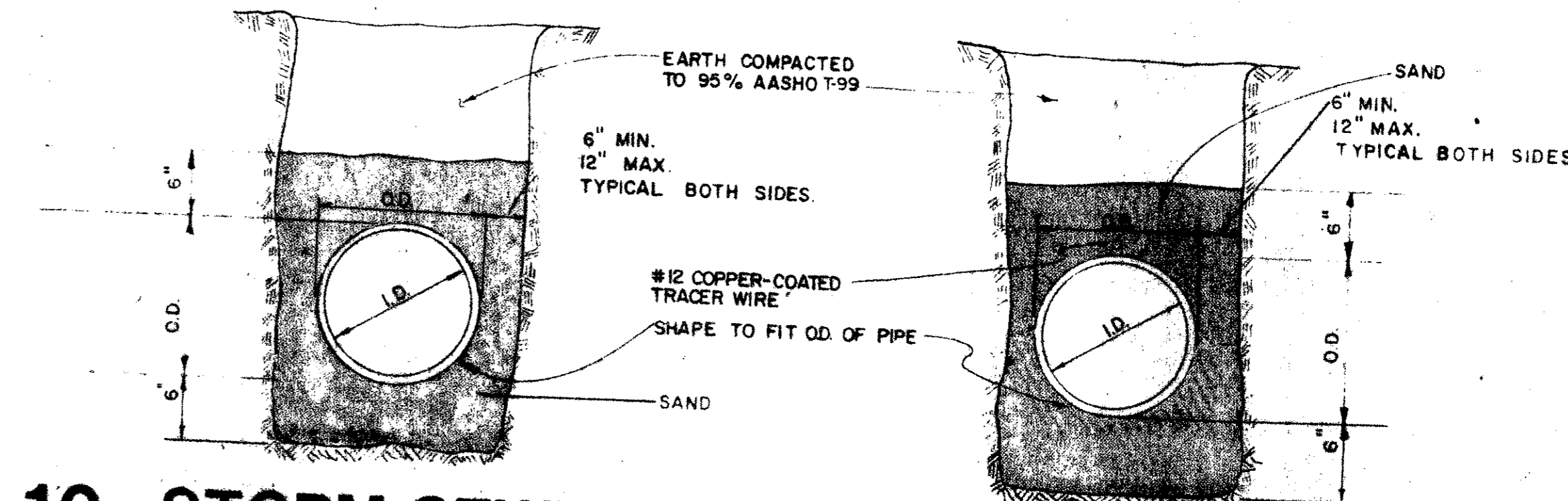
8 - TYPICAL FIRE HYDRANT INSTALLATION

NOT TO SCALE



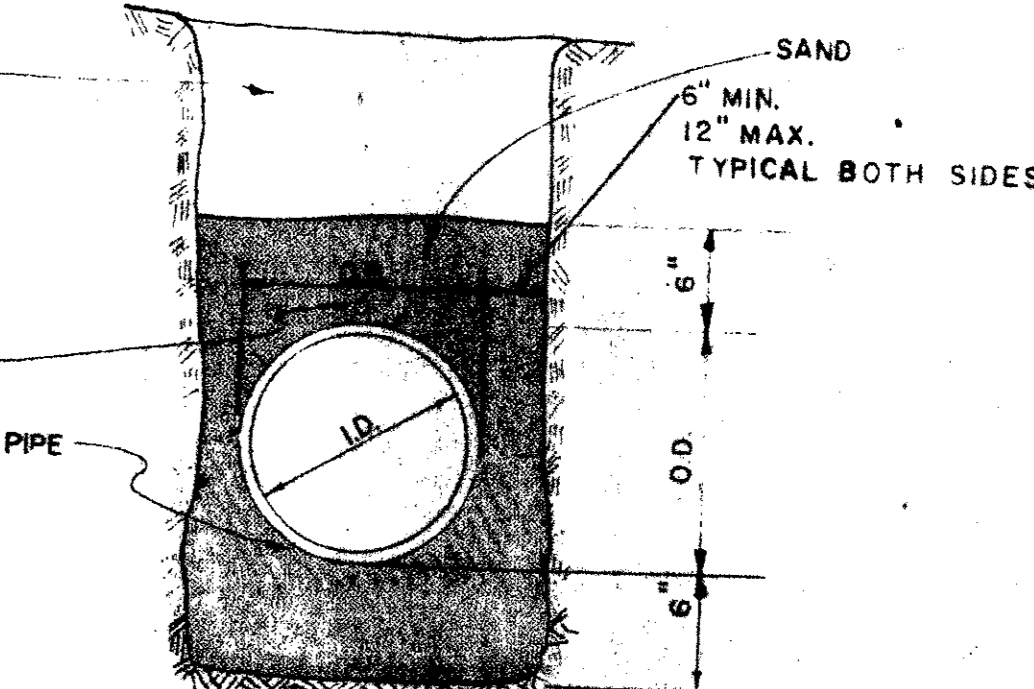
9 - ENCASEMENT DETAIL

NOT TO SCALE



10 - STORM SEWER BEDDING DETAIL

NOT TO SCALE



11 - SANITARY SEWER & WATER BEDDING DETAIL

NOT TO SCALE

DATE	BY	CHKD	APP'D

Haldeman
Miller
Bregman
Hamann

project: **M.E.P.C. QUORUM NORTH OFFICES**
Address, Texas
Phase One
title: **CIVIL DETAILS**

job no:
revisions

sheet **C7**
of sheets
date: 12/17/81

Asbuilt