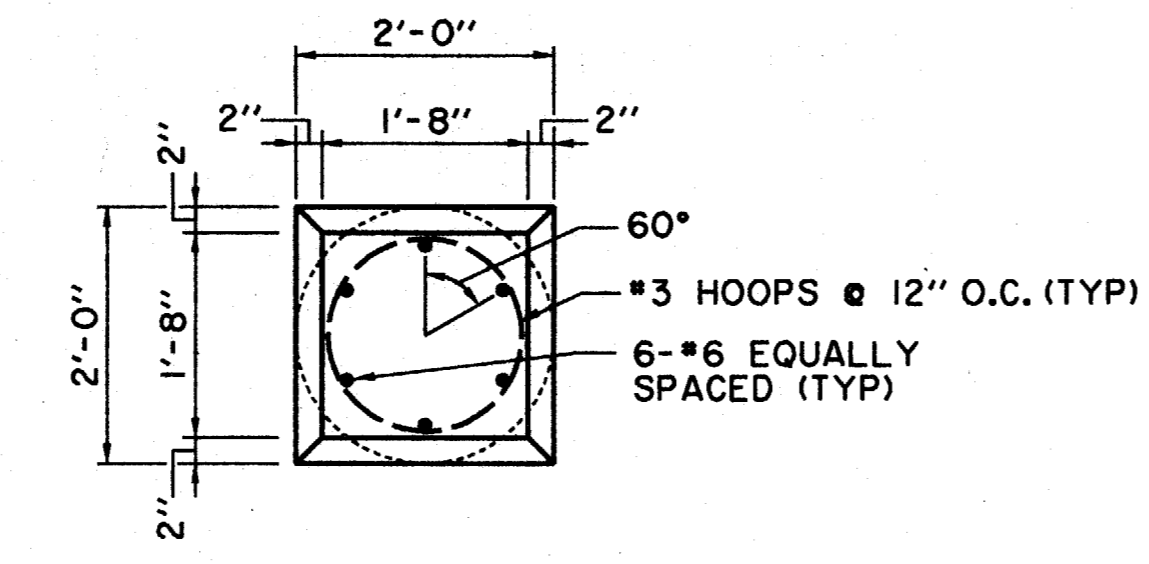
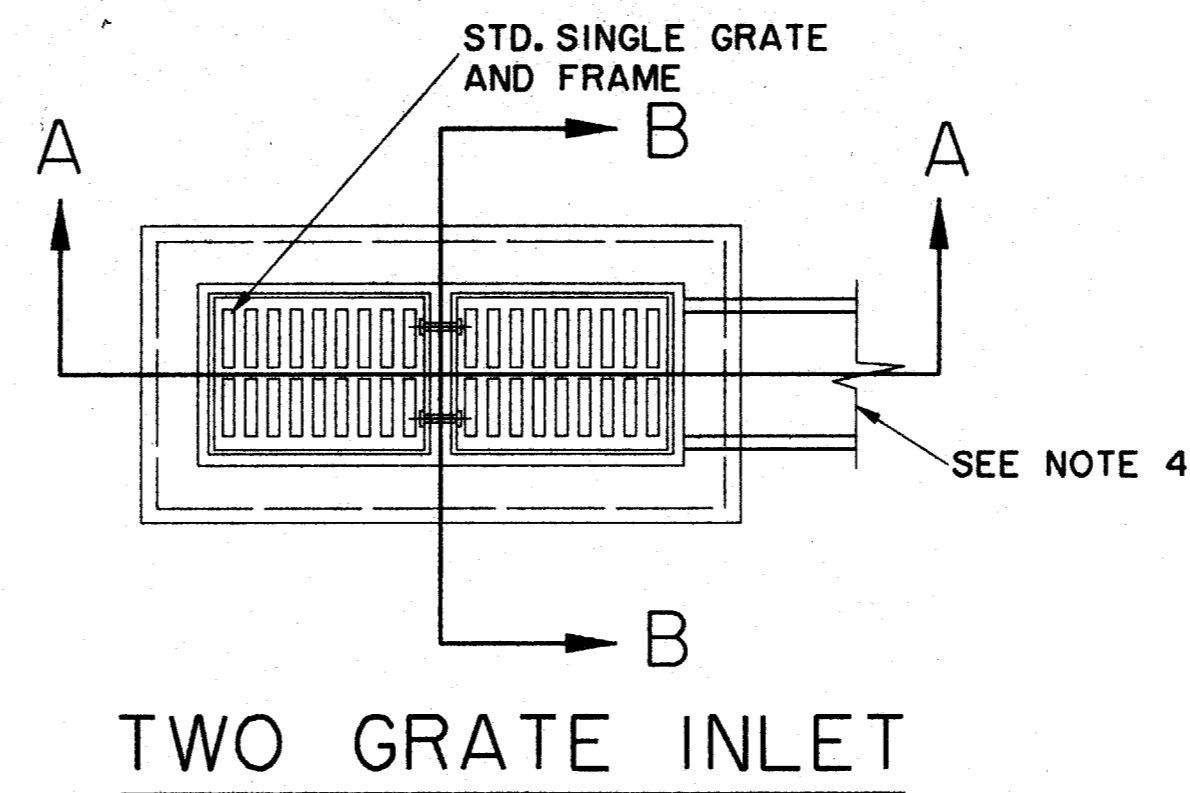


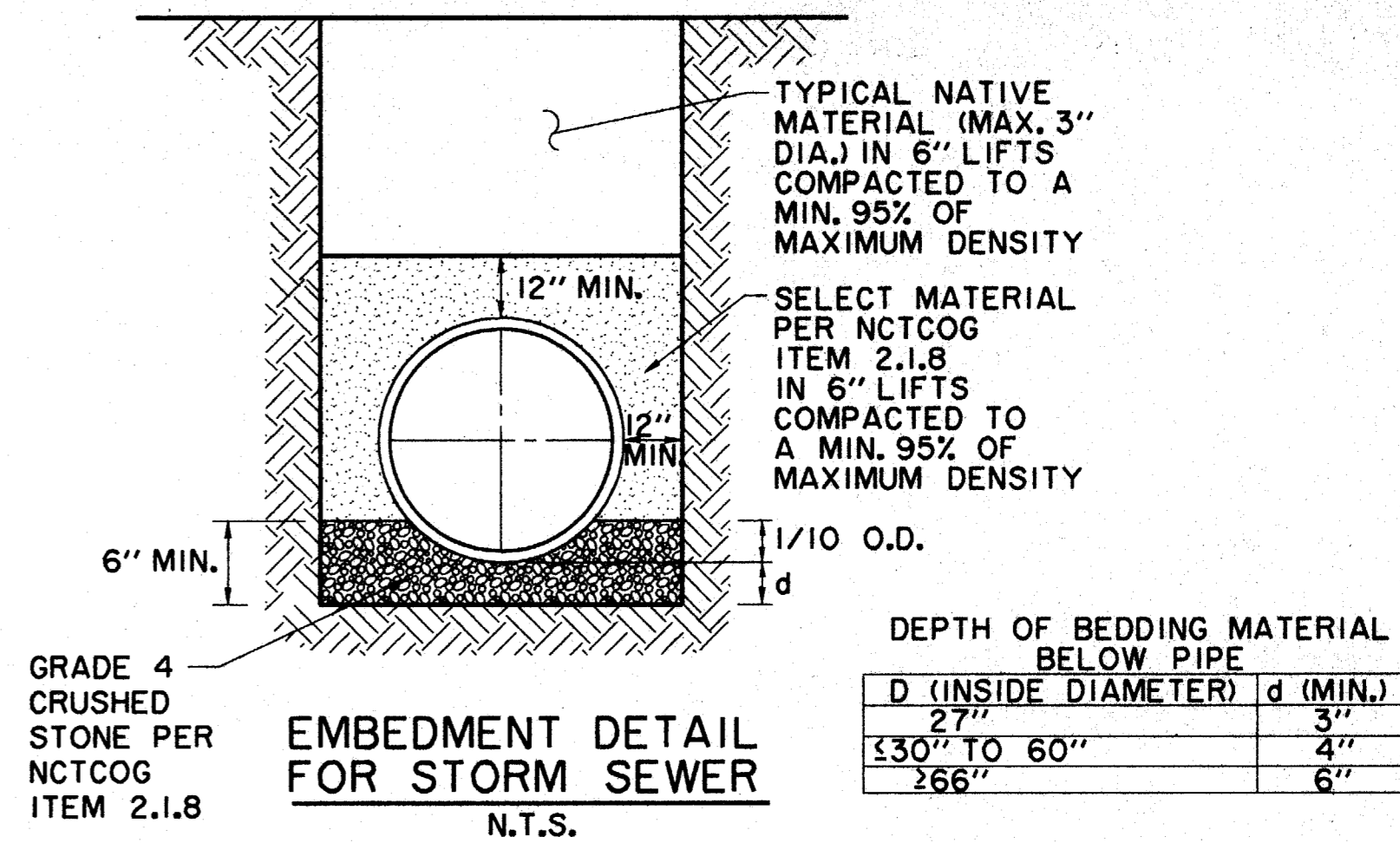
TYPICAL SECTION A-A  
N.T.S.



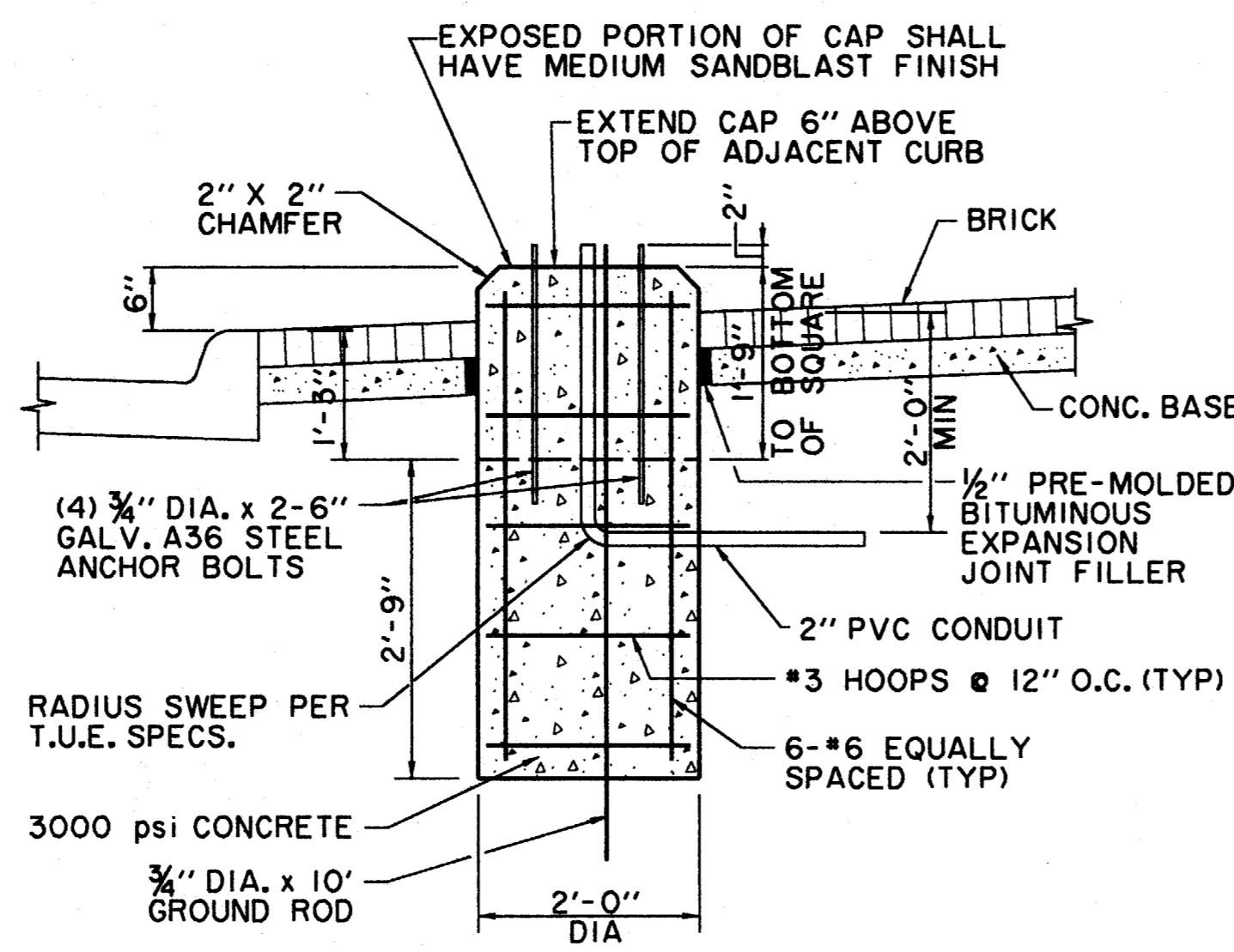
LIGHT FIXTURE FOUNDATION  
AND CAP PLAN  
N.T.S.



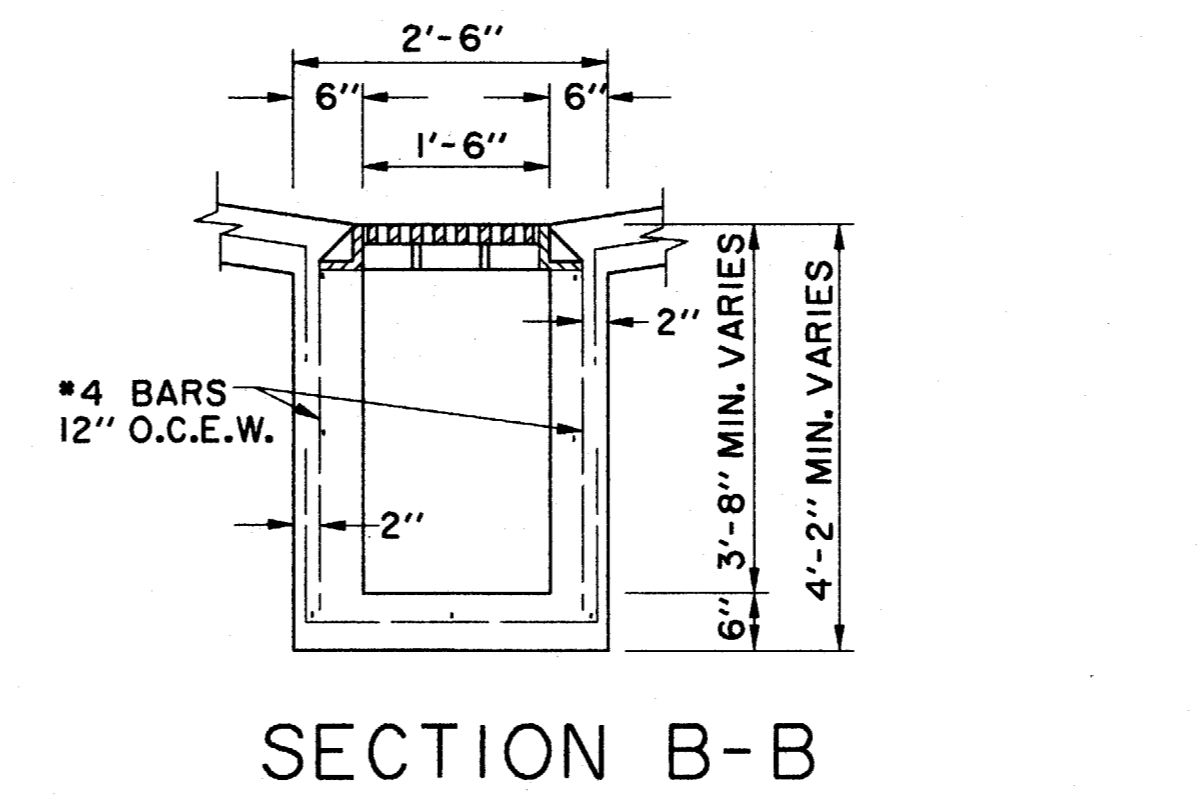
TWO GRATE INLET



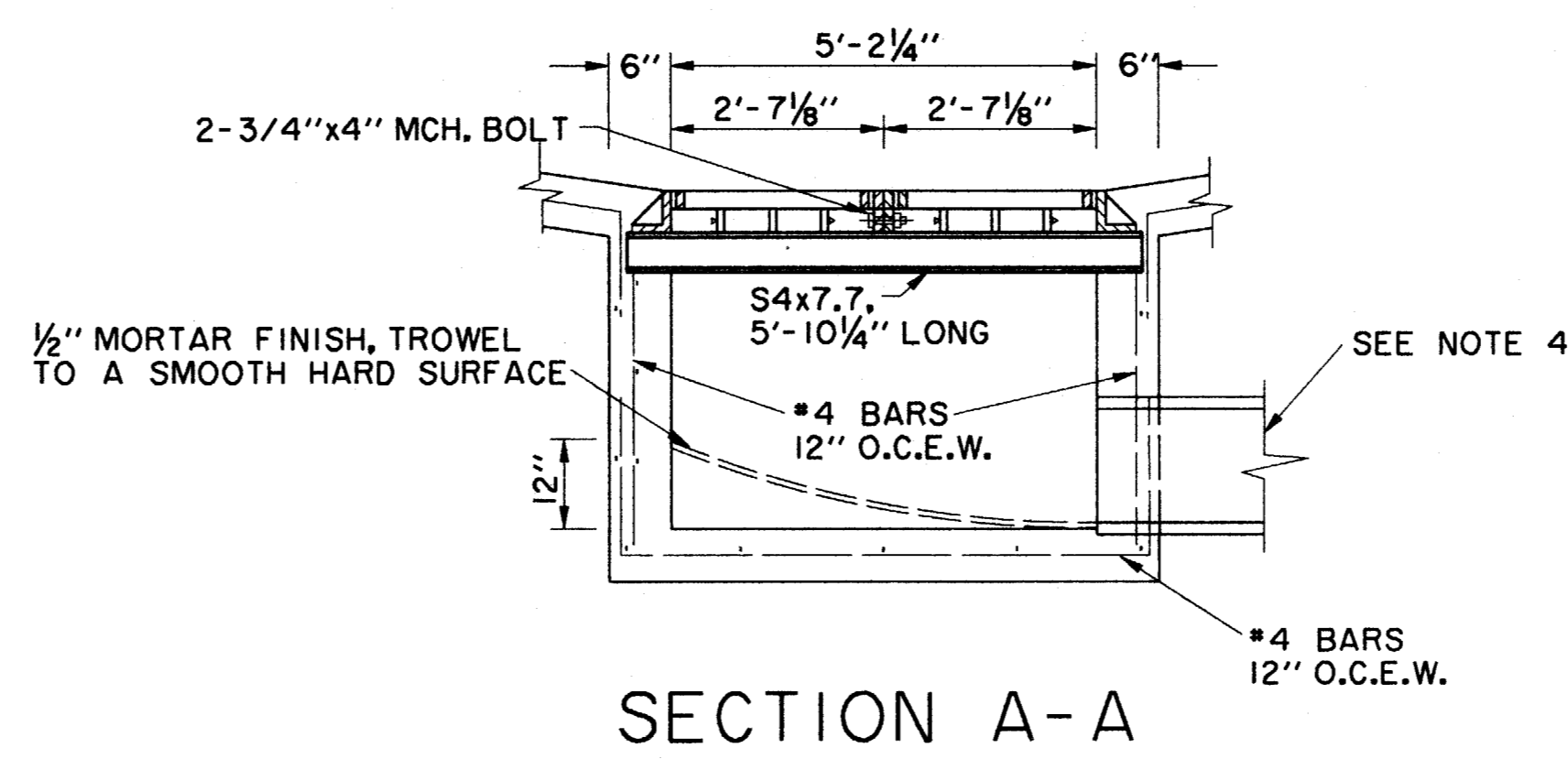
EMBEDMENT DETAIL  
FOR STORM SEWER  
N.T.S.



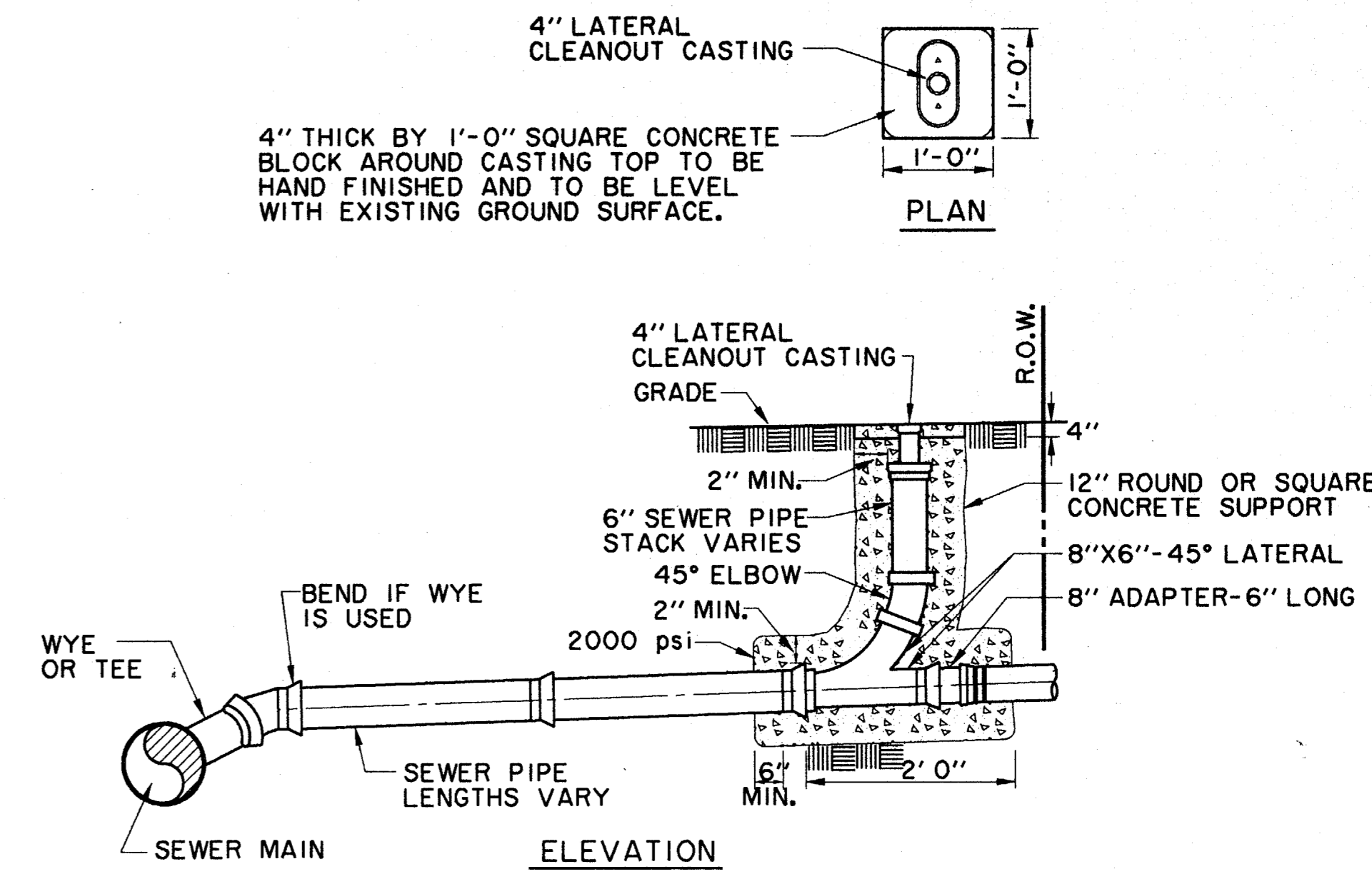
LIGHT FIXTURE FOUNDATION  
AND CAP SECTION  
N.T.S.



SECTION B-B



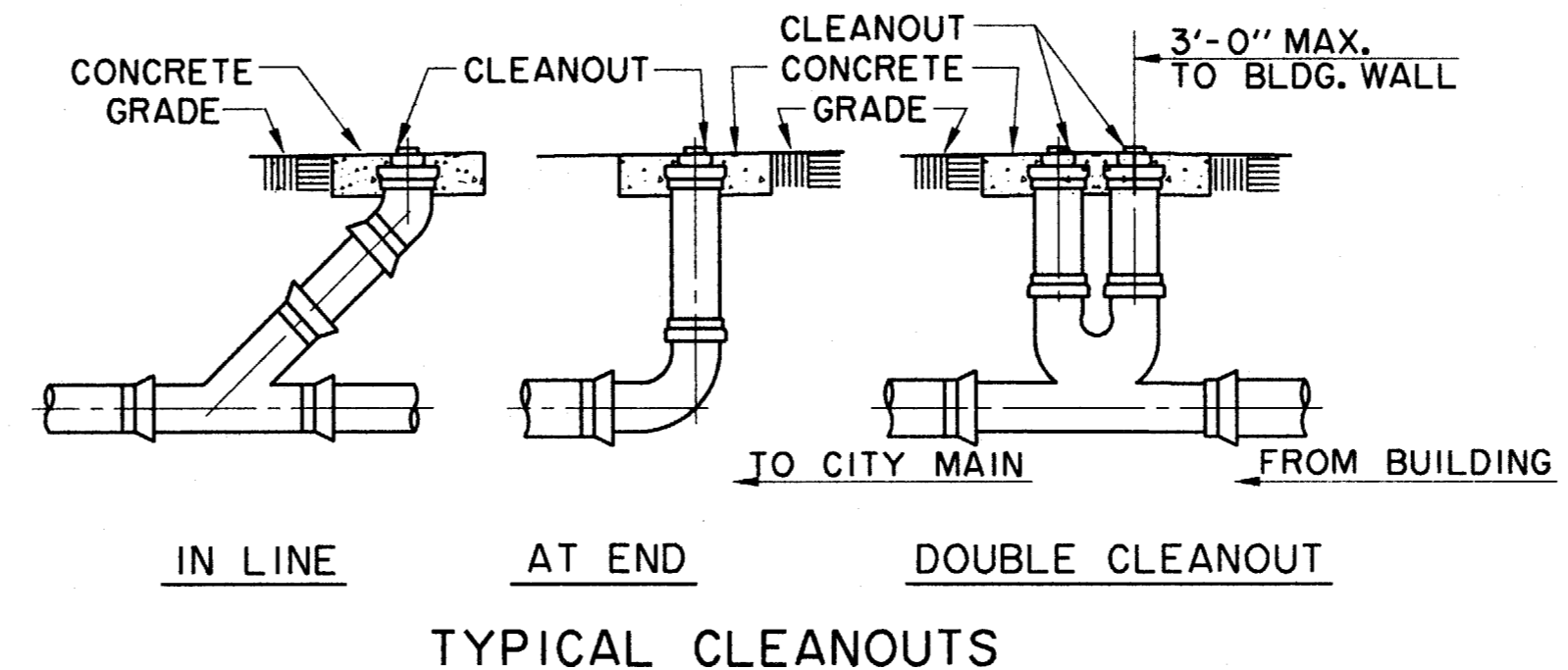
SECTION A-A



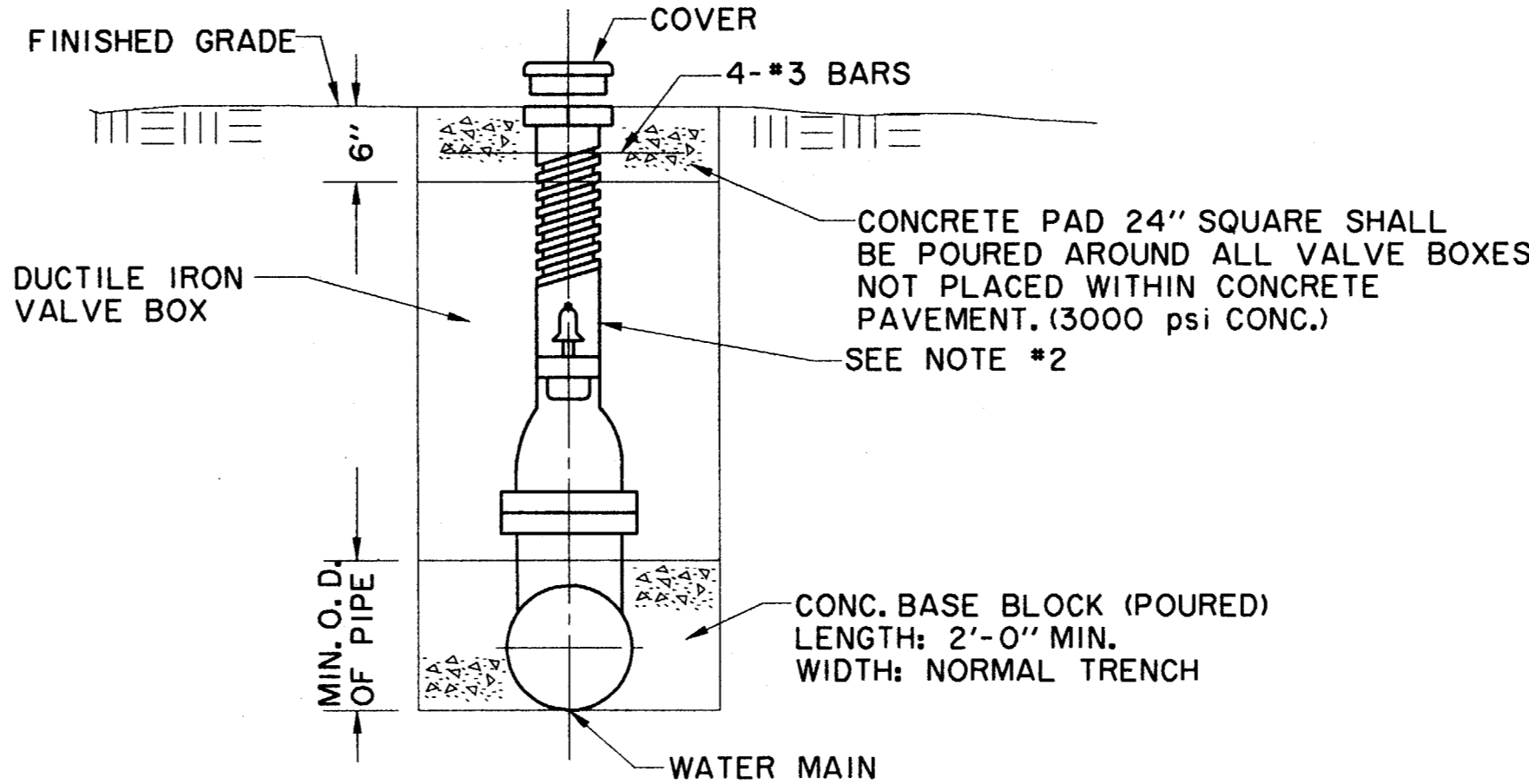
SANITARY SEWER CLEANOUT DETAIL  
N.T.S.

PVC SANITARY SEWER PIPE TO BE SDR 35 OR SDR 26 (AS NOTED ON PLANS) WITH INTEGRAL BELL. IT SHALL BE THE RESPONSIBILITY OF THE CONTRACTOR TO FIELD LOCATE HORIZONTALLY EACH SERVICE IN RELATION TO THE SANITARY SEWER STATIONING.

FIELD TIES ARE TO BE INCLUDED AND RECORDED ON ALUMINIZED SANITARY SEWER TAPE. THIS TAPE, GREEN OR RED IN COLOR IS TO BE ATTACHED TO THE 6" SERVICE AT THE R.O.W. LINE AND BROUGHT TO THE SURFACE TO BE USED AS A PERMANENT MARKER.

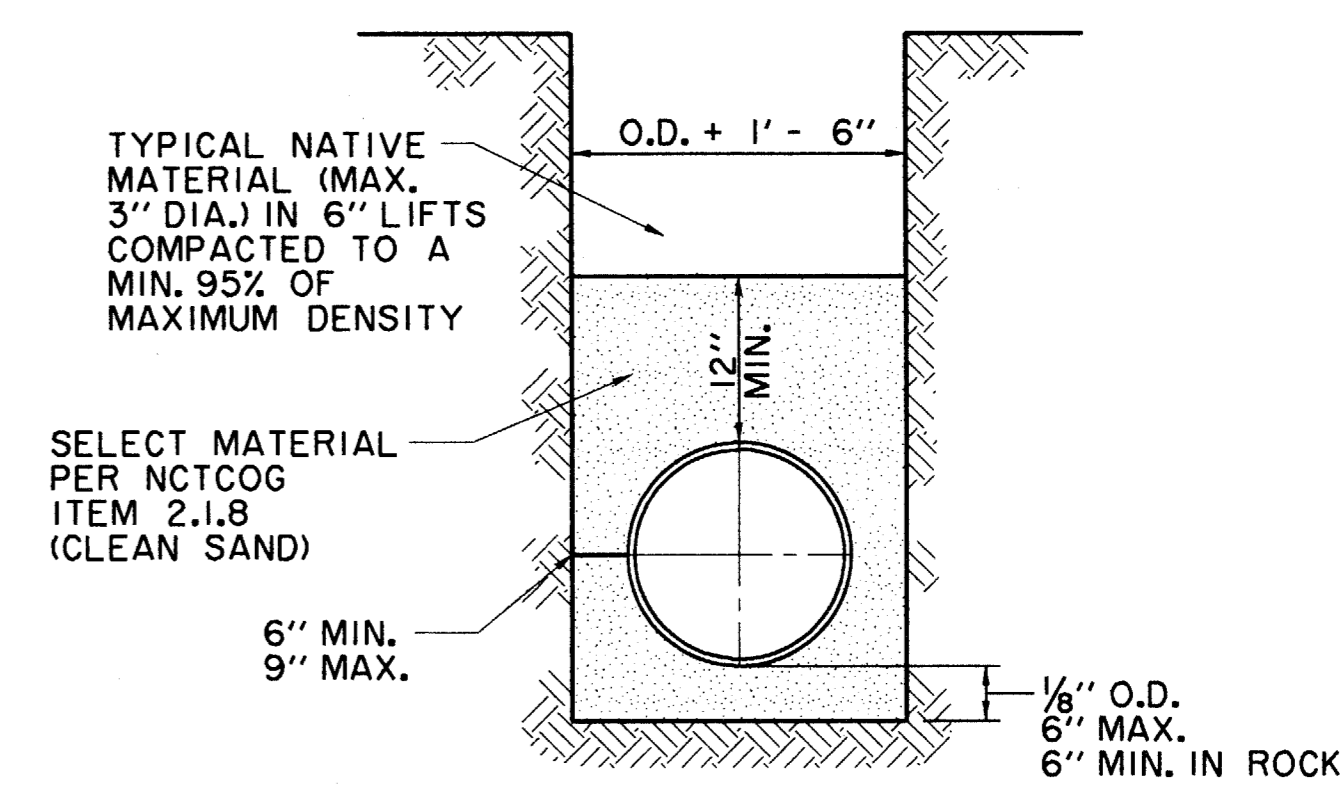


TYPICAL CLEANOUTS

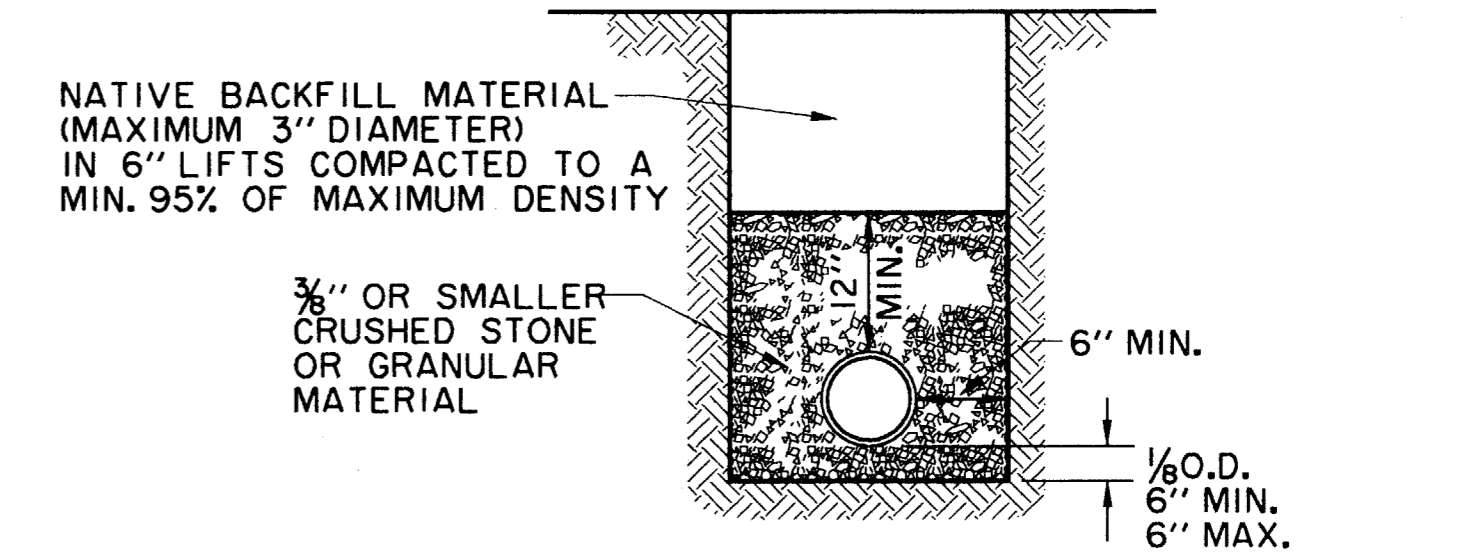


TYPICAL VALVE SETTING AND BOX  
N.T.S.

- NOTES:
- GATE VALVES SHALL BE IN ACCORDANCE WITH AWWA STANDARD C-509-80 OR LATEST THEREOF. ALL VALVES SHALL BE "MUELLER" OR APPROVED EQUAL.
  - A PERMANENTLY ATTACHED VALVE EXTENSION STEM SHALL BE REQUIRED FOR ANY VALVE ON WHICH THE OPERATING NUT IS LOCATED IN EXCESS OF 4 FEET BELOW THE TOP OF VALVE BOX. THIS EXTENSION SHALL BE OF SUFFICIENT LENGTH TO INSURE THAT ITS TOP IS WITHIN 4" OF VALVE BOX LID. MANUFACTURED VALVE STACK DUCTILE IRON PIPE TO BE USED FOR EXTENSION GREATER THAN 4'-0". BELL END OF STACK TO BE FITTED OVER VALVE. VALVE AND VALVE STACK IS TO BE POLY WRAPPED.
  - VALVES SHALL BE OF DUCTILE IRON W/RUBBER ENCAPSULATED DISK. BOLTS SHALL BE STAINLESS STEEL OF SAME SIZE ON EACH VALVE.



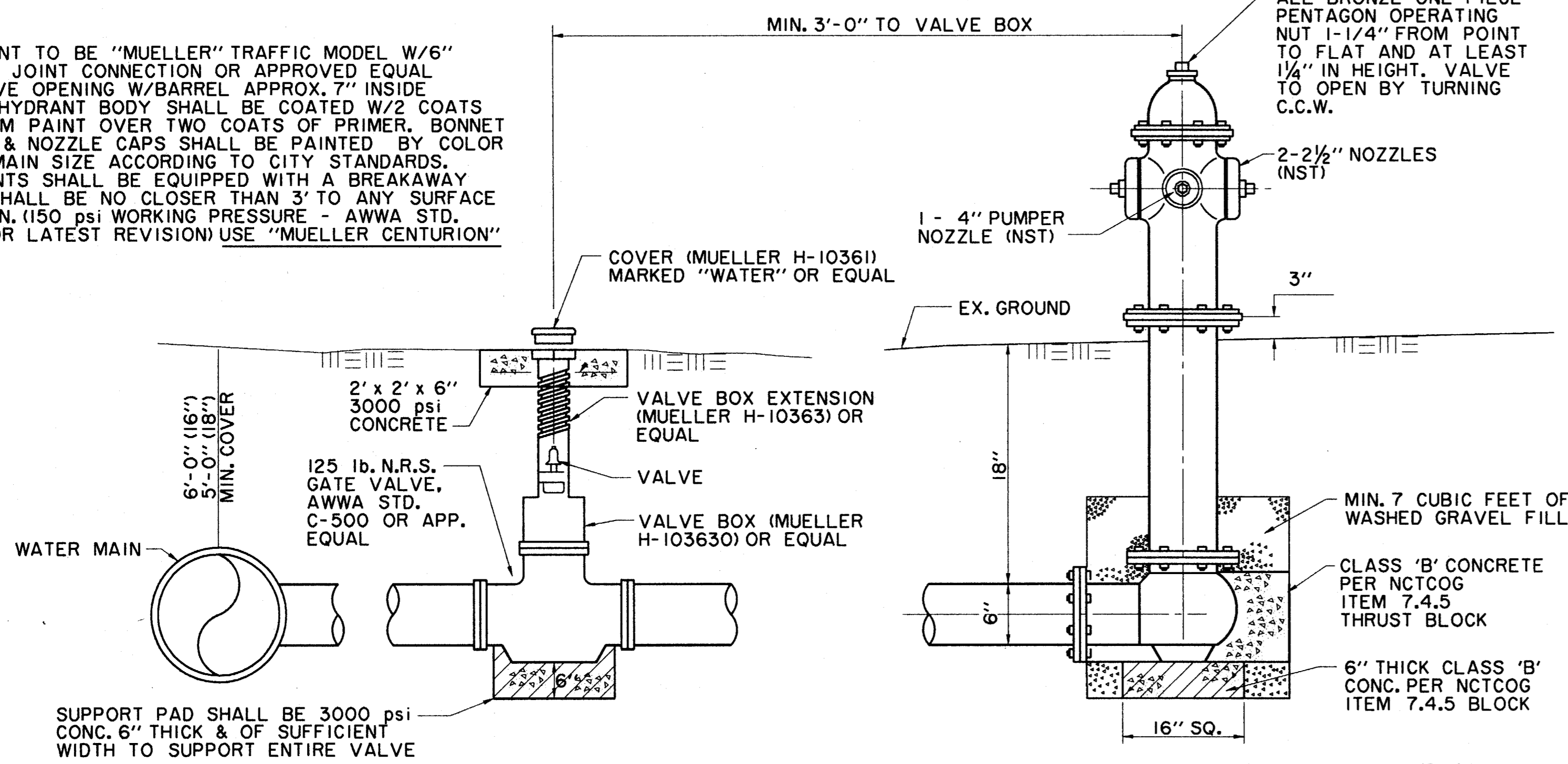
P.V.C. EMBEDMENT  
WATER PIPE  
N.T.S.



CLASS 4 EMBEDMENT  
(SDR35 AND SDR26 P.V.C. PIPE ONLY)  
LOAD FACTOR = 2.0  
N.T.S.

TYPICAL NATIVE MATERIAL COMPACTED TO: 95% OF STANDARD PROCTOR DENSITY AT OPTIMUM MOISTURE 0 TO +3% UNDER PAVEMENT 95% OF STANDARD PROCTOR DENSITY AT OPTIMUM MOISTURE 0 TO +3% OUTSIDE CURB LINES JETTING IS NOT ALLOWED BACKFILL TO BE COMPACTED IN 6" +/- LIFTS TYPICAL NATIVE MATERIAL (MAX. 3" DIA.)

FIRE HYDRANT TO BE "MUELLER" TRAFFIC MODEL W/6" MECHANICAL JOINT CONNECTION OR APPROVED EQUAL W/5/8" VALVE OPENING W/BARREL APPROX. 7" INSIDE DIAMETER. HYDRANT BODY SHALL BE COATED W/2 COATS OF ALUMINUM PAINT OVER TWO COATS OF PRIMER. BONNET TO FLANGE & NOZZLE CAPS SHALL BE PAINTED BY COLOR CODE FOR MAIN SIZE ACCORDING TO CITY STANDARDS. ALL HYDRANTS SHALL BE EQUIPPED WITH A BREAKAWAY FLANGE & SHALL BE NO CLOSER THAN 3' TO ANY SURFACE OBSTRUCTION. (150 PSI WORKING PRESSURE - AWWA STD. C-502-73 OR LATEST REVISION) USE "MUELLER CENTURION"



TYPICAL FIRE HYDRANT INSTALLATION  
N.T.S.

- GENERAL NOTES:
- OF F.H. BARREL SHALL BE NOT LESS THAN 6.0' OR MORE THAN 9.0' FROM BACK OF CURB OR EDGE OF DRIVING LANE.
  - DO NOT SET F.H. IN AN EXISTING OR PROPOSED SIDEWALK, UNLESS OTHERWISE NOTED.
  - ALL F.H. TEES SHALL BE M.J. WITH ANCHORING ON THE BRANCH WITH M.J., M.J. 6" VALVE.
  - SET F.H. ON THE LOT LINE EXTENDED WHEN POSSIBLE. (NOT APPLICABLE TO THIS PROJECT)
  - SEE SPECIFICATION FH-95-1 FOR ADDITIONAL REQUIREMENTS.

GATE VALVES AND VALVE BOXES:

- GATE VALVES SHALL BE IRON BODY, BRONZE OR BRASS MOUNTED, NON-RISING STEM, PARALLEL SEAT TYPE. VALVES SHALL BE OF EQUAL OR GREATER PRESSURE CLASS THAN THE PIPING IN WHICH THEY ARE TO BE INSTALLED.
- VALVE BOXES SHALL BE CAST IRON AND SHALL BE OF SUFFICIENT LENGTH AND DIAMETER TO OPERATE ALL VALVES BURIED IN THE GROUND. COVERS SHALL BE MARKED "WATER". THE BOXES SHALL REST ON THE VALVE AND BE ADJUSTED SO THAT THE COVER MAY SET FLUSH WITH THE FINISHED GRADE.

VALVE BOX DETAIL  
N.T.S.

(SEE PLANS FOR "MAIN SIZE")

CHAMPION PARTNERS  
REAL ESTATE STRATEGIST AND IMPLEMENTATION  
5430 182 Parkway Suite 1245 Dallas, Texas 75244  
(972) 490-5400 Fax (972) 490-5519

ADDISON CIRCLE  
OFFICE BUILDING  
ADDISON TEXAS

PROGRESS DATED 1994, Inc.  
CONSULTING ENGINEERS  
3111 McKinney Ave., Suite 600  
Dallas, TX 75204 214-871-3111

HUITT-ZOLLARS, INC.  
3111 McKinney Ave., Suite 600  
Dallas, TX 75204 214-871-3111

HKS  
Architects-Engineers-Planners  
700 N. Pearl, Suite 1100, LB 307  
Dallas, Texas 75201-7485 (214) 969-2599

Job No: 5494  
ISSUED FOR 100  
DESIGN  
DEVELOPMENT  
NOT FOR  
CONSTRUCTION  
26 JUNE 1997

Revisions:  
Date:  
Sheet Title:  
MISCELLANEOUS  
DETAILS  
Sheet No:  
C10

File:  
1 5494-1-10  
2  
3  
4  
5  
Plot date:  
20 JUN 97