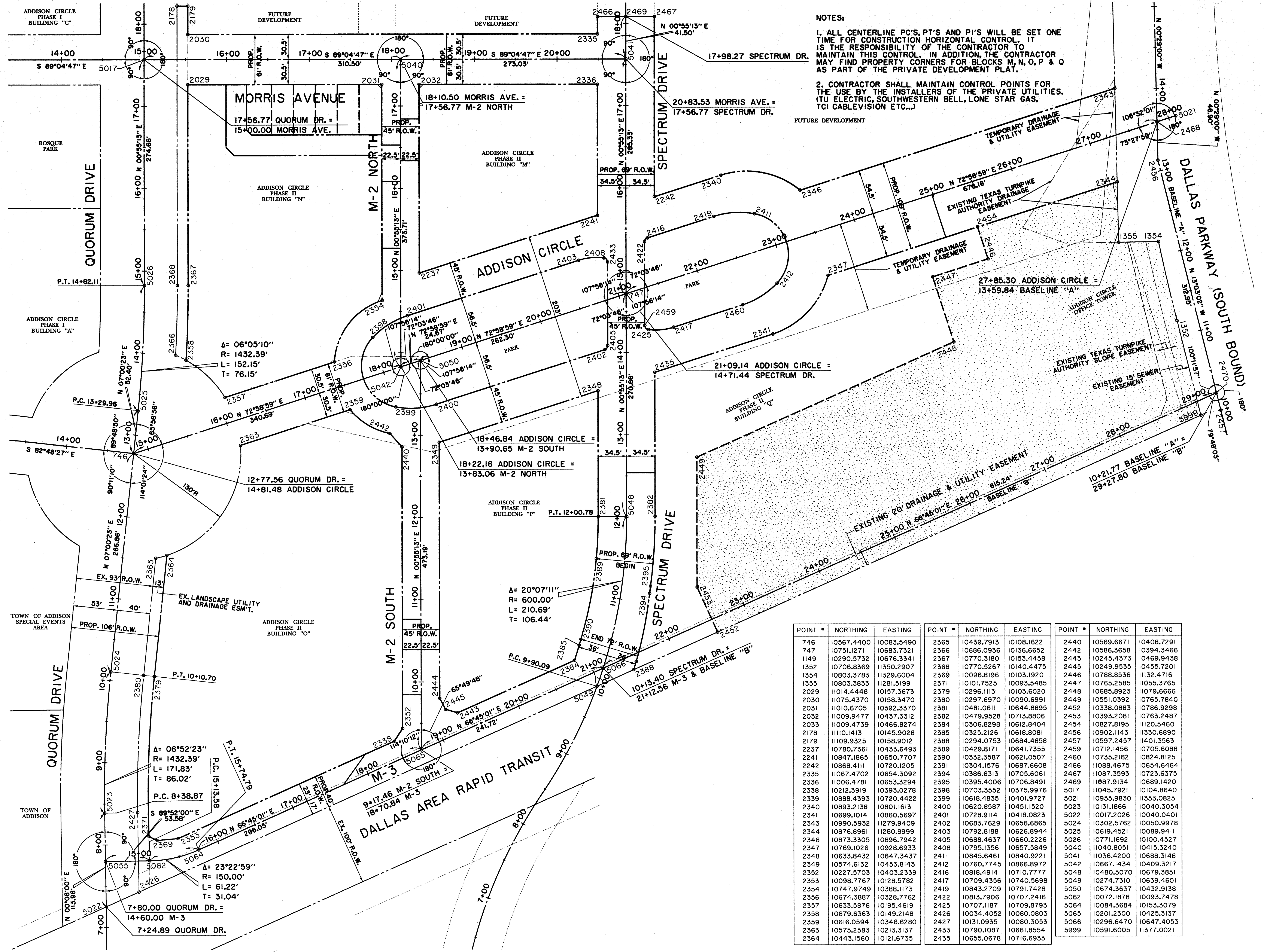
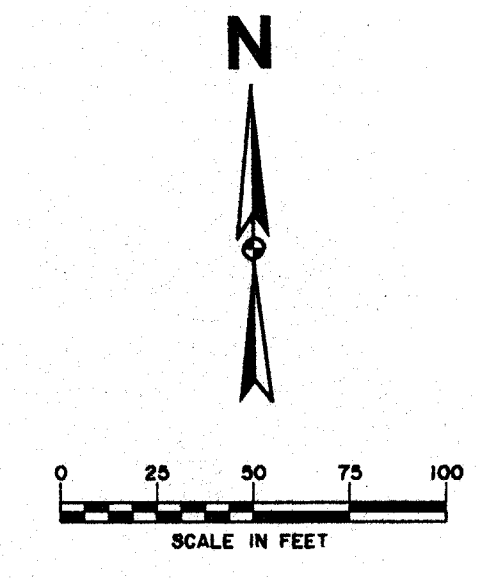


ADDISON CIRCLE  
 OFFICE BUILDING  
 ADDISON TEXAS



NOTES:  
 1. ALL CENTERLINE PC'S, PT'S AND PI'S WILL BE SET ONE TIME FOR CONSTRUCTION HORIZONTAL CONTROL. IT IS THE RESPONSIBILITY OF THE CONTRACTOR TO MAINTAIN THIS CONTROL. IN ADDITION, THE CONTRACTOR MAY FIND PROPERTY CORNERS FOR BLOCKS M, N, O, P & Q AS PART OF THE PRIVATE DEVELOPMENT PLAT.  
 2. CONTRACTOR SHALL MAINTAIN CONTROL POINTS FOR THE USE BY THE INSTALLERS OF THE PRIVATE UTILITIES. (TU ELECTRIC, SOUTHWESTERN BELL, LONE STAR GAS, TCI CABLEVISION ETC...)



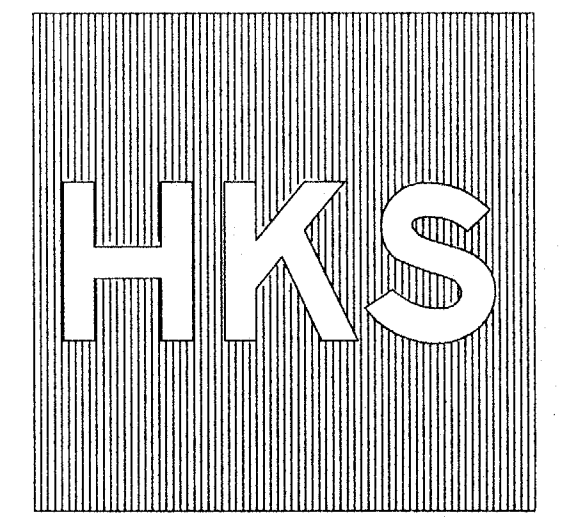
LEGEND:  
 ——— EXISTING R.O.W./P.L.  
 - - - - - PROPOSED R.O.W./P.L.  
 - - - - - FUTURE R.O.W./P.L.  
 - - - - - EASEMENT LINE  
 - - - - - STREET CENTERLINE

POINT #	NORTHING	EASTING	POINT #	NORTHING	EASTING	POINT #	NORTHING	EASTING
746	10567.4400	10083.5490	2365	10439.7913	10108.1622	2440	10569.6671	10408.7291
747	10751.1271	10683.7321	2366	10686.0936	10136.6652	2442	10586.3658	10394.3466
1149	10290.5732	10676.3341	2367	10770.3180	10153.4458	2443	10245.4373	10469.9438
1352	10706.6369	11350.2907	2368	10770.5267	10140.4475	2445	10249.9535	10455.7201
1354	10803.3783	11329.6004	2369	10096.8196	10103.1920	2446	10788.8536	11132.4716
1355	10803.3833	11281.5199	2371	10101.7525	10093.5485	2447	10765.2585	11055.3765
2029	11014.4448	10157.3673	2379	10296.1113	10103.6020	2448	10685.8923	11079.6666
2030	11075.4370	10158.3470	2380	10297.6970	10090.6991	2449	10551.0392	10765.7840
2031	11010.6705	10392.3370	2381	10481.0611	10644.8895	2452	10338.0883	10786.9298
2032	11009.9477	10437.3312	2382	10479.9528	10713.8806	2453	10393.2081	10763.2487
2033	11009.4739	10466.8274	2384	10306.8298	10612.8404	2454	10827.8195	11120.5480
2178	11110.1413	10145.9028	2385	10325.2126	10618.8081	2456	10902.1143	11330.6890
2179	11109.9325	10158.9012	2388	10294.0753	10684.4858	2457	10597.2457	11401.3563
2237	10780.7361	10433.6493	2389	10429.8171	10641.7355	2459	10712.1456	10705.6088
2241	10847.1865	10650.7707	2390	10332.3587	10621.0507	2460	10735.2182	10824.8125
2242	10868.4111	10720.1205	2391	10304.1576	10687.6608	2466	11088.4675	10654.6464
2335	11067.4702	10654.3092	2394	10386.6313	10705.6061	2467	11087.3593	10723.6375
2336	11006.4781	10653.3294	2395	10395.4006	10706.8491	2469	11087.9134	10689.1420
2338	10212.3919	10393.0278	2398	10703.3552	10375.9976	5017	11045.7921	10104.8640
2339	10886.4393	10720.4422	2399	10610.4835	10401.9727	5021	10955.9630	11353.0825
2340	10893.2138	10801.1613	2400	10620.8587	10451.1920	5023	10131.1866	10620.3054
2341	10699.1014	10860.5687	2401	10728.9114	10418.0823	5022	10017.2026	10040.0401
2343	10990.5932	11279.9409	2402	10683.7629	10656.6865	5024	10302.5762	10050.9978
2344	10876.8961	11280.8999	2403	10792.8188	10626.8944	5025	10619.4521	10089.9411
2346	10873.3305	10896.7942	2405	10688.4637	10660.2226	5026	10771.1692	10100.4527
2347	10769.1026	10928.6933	2408	10795.1356	10657.5849	5040	11040.8051	10415.3240
2348	10633.8432	10647.3437	2411	10845.6461	10840.9221	5041	11036.4200	10688.3148
2349	10574.6132	10453.8143	2412	10760.7745	10866.8972	5042	10687.1434	10409.3217
2352	10227.5703	10403.2339	2416	10818.4914	10710.7777	5048	10480.5070	10678.3851
2353	10098.7767	10128.5782	2417	10709.4356	10740.5698	5049	10274.7310	10639.4601
2354	10747.9749	10388.1173	2419	10843.2709	10791.7428	5050	10674.3637	10432.9138
2356	10674.3887	10328.7762	2422	10813.7906	10707.2416	5062	10072.1878	10093.7478
2357	10633.5876	10195.4619	2425	10707.1187	10709.8793	5064	10084.3684	10153.3079
2358	10679.6363	10149.2148	2426	10034.4052	10080.0803	5065	10201.2300	10425.3137
2359	10616.0594	10346.6280	2427	10131.0935	10080.3053	5066	10296.6470	10647.4053
2363	10575.2583	10213.3137	2433	10790.1087	10661.8554	5999	10591.6005	11377.0021
2364	10443.1560	10121.6735	2435	10655.0678	10716.6935			

3042-18-1-MOR-17-0125

Plot date:  
 20 JUN 97

HUITT-ZOLLARS, INC.  
 Consulting Engineers  
 3131 McKinney Ave., Suite 600  
 Dallas, TX 75204 214-871-3311



Job No: 5494  
 ISSUED FOR 100%  
 DESIGN  
 DEVELOPMENT  
 NOT FOR  
 CONSTRUCTION  
 26 JUNE 1997

Revisions:  
 Date:  
 Sheet Title:  
 HORIZONTAL CONTROL  
 PLAN  
 Sheet No:  
 C2  
 © 1997  
 HKS Inc.