

ADDISON CIRCLE OFFICE BUILDING  
 ADDISON TEXAS

HUITT-ZOLLARS, INC.  
 3121 McKinney Ave., Suite 600  
 Dallas, TX 75204 214-873-2311

HKS  
 HKS Inc. Architects-Engineers-Planners  
 700 W. Pearl, Suite 1100, LB 302  
 Dallas, Texas 75201-7405 (214) 969-2599

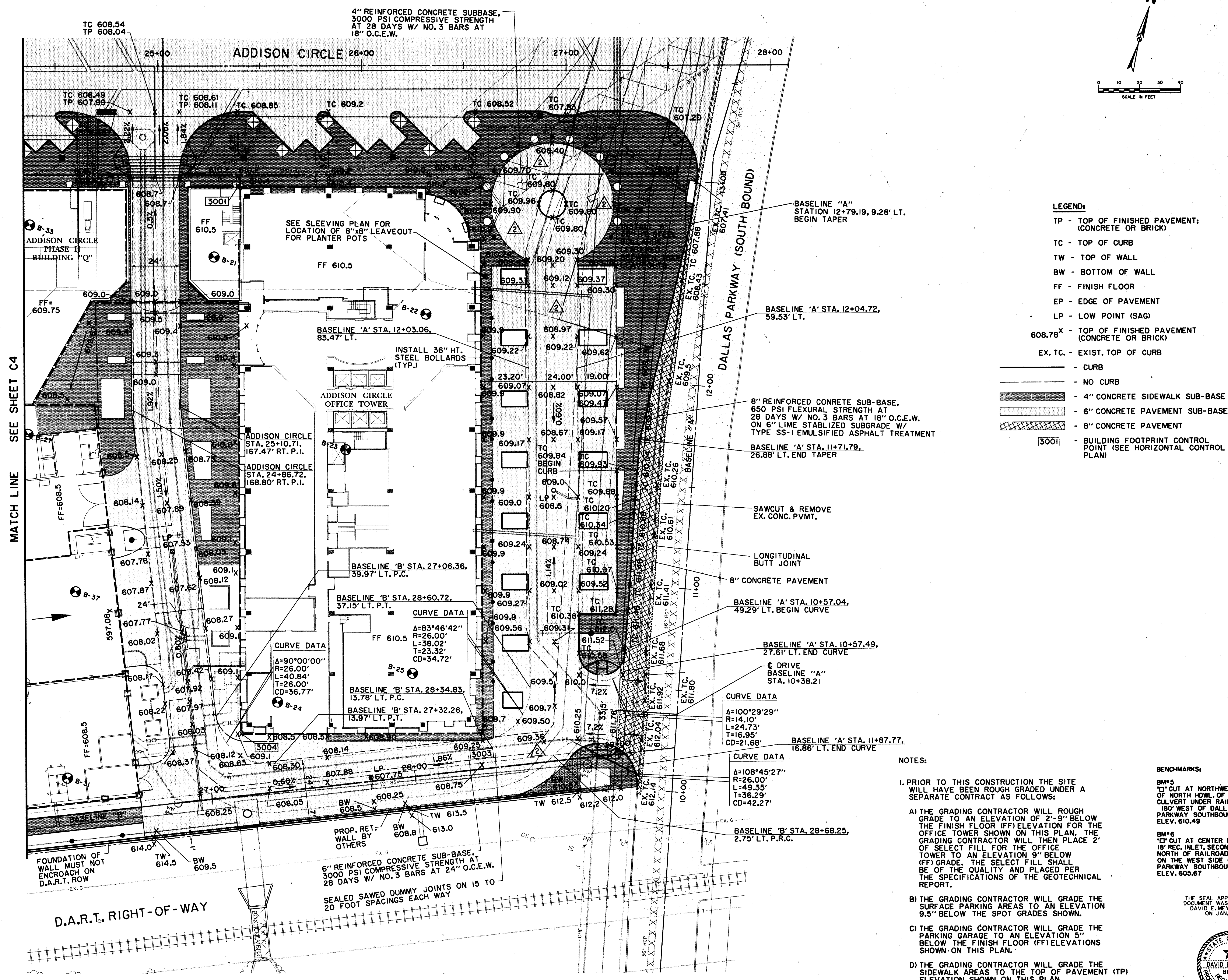
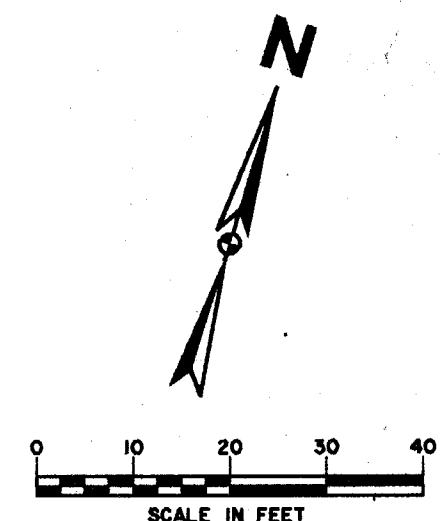
Job No: 5494  
 ISSUED FOR CONSTRUCTION

15 OCT. 1997  
 ADDDED TURNAROUND, BOLLARDS AND TREES, REVISED GRADES 1/16/98  
 ADDDED FIRE LANE DIMENSION CONTROL 10/21/97

Rev: 1/16/98  
 Date: 10/21/97  
 Sheet Title: PAVING & GRADING PLAN  
 Sheet No: C3

ADDISON CIRCLE STREET PAVEMENT AND SIDEWALK PAVEMENT NORTH OF PAY LINE / RIGHT-OF-WAY LINE TO BE CONSTRUCTED UNDER SEPARATE CONTRACT.

SEE LANDSCAPE PLAN FOR STREET LIGHT LOCATIONS AND SHEET C10 FOR STREET LIGHT FOUNDATION DETAILS.



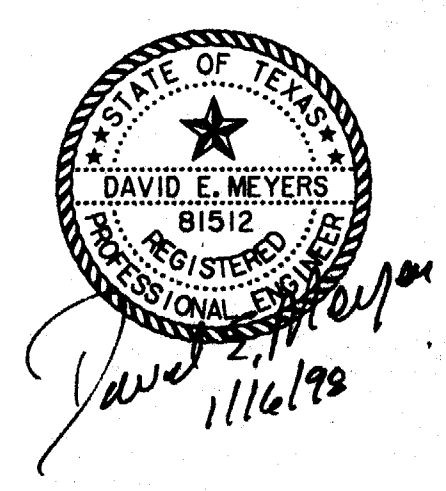
- LEGEND:**
- TP - TOP OF FINISHED PAVEMENT; (CONCRETE OR BRICK)
  - TC - TOP OF CURB
  - TW - TOP OF WALL
  - BW - BOTTOM OF WALL
  - FF - FINISH FLOOR
  - EP - EDGE OF PAVEMENT
  - LP - LOW POINT (SAG)
  - 608.78 X - TOP OF FINISHED PAVEMENT (CONCRETE OR BRICK)
  - EX. TC. - EXIST. TOP OF CURB
  - CURB
  - NO CURB
  - 4" CONCRETE SIDEWALK SUB-BASE
  - 6" CONCRETE PAVEMENT SUB-BASE
  - 8" CONCRETE PAVEMENT
  - [3001] - BUILDING FOOTPRINT CONTROL POINT (SEE HORIZONTAL CONTROL PLAN)

- NOTES:**
1. PRIOR TO THIS CONSTRUCTION THE SITE WILL HAVE BEEN ROUGH GRADED UNDER A SEPARATE CONTRACT AS FOLLOWS:
    - A) THE GRADING CONTRACTOR WILL ROUGH GRADE TO AN ELEVATION OF 2'-9" BELOW THE FINISH FLOOR (FF) ELEVATION FOR THE OFFICE TOWER SHOWN ON THIS PLAN. THE GRADING CONTRACTOR WILL THEN PLACE 2' OF SELECT FILL FOR THE OFFICE TOWER TO AN ELEVATION 9" BELOW (FF) GRADE. THE SELECT FILL SHALL BE OF THE QUALITY AND PLACED PER THE SPECIFICATIONS OF THE GEOTECHNICAL REPORT.
    - B) THE GRADING CONTRACTOR WILL GRADE THE SURFACE PARKING AREAS TO AN ELEVATION 9.5" BELOW THE SPOT GRADES SHOWN.
    - C) THE GRADING CONTRACTOR WILL GRADE THE PARKING GARAGE TO AN ELEVATION 5" BELOW THE FINISH FLOOR (FF) ELEVATIONS SHOWN ON THIS PLAN.
    - D) THE GRADING CONTRACTOR WILL GRADE THE SIDEWALK AREAS TO THE TOP OF PAVEMENT (TP) ELEVATION SHOWN ON THIS PLAN.
  2. SEE SHEET C3.1 FOR ADDITIONAL DIMENSION CONTROL AND SHEET CS.2 FOR BRICK PATTERNS.
  3. SEE SHEETS C1 & C10 FOR DROP SLAB AND BRICK INSTALLATION DETAILS.

**BENCHMARKS:**

- BM#5  
 "I" CUT AT NORTHWEST CORNER OF NORTH HDWL. OF 7'X7' BOX CULVERT UNDER RAILROAD, 180' WEST OF DALLAS PARKWAY SOUTHBOUND. ELEV. 610.49
- BM#6  
 "I" CUT AT CENTER FRONT OF 18" REC. INLET, SECOND INLET NORTH OF RAILROAD TRACKS ON THE WEST SIDE OF DALLAS PARKWAY SOUTHBOUND. ELEV. 605.67

THE SEAL APPEARING ON THIS DOCUMENT WAS AUTHORIZED BY DAVID E. MEYERS, P.E. 61012 ON JAN. 16, 1998.



ALL ADDITIONS, DELETIONS, OR CHANGES TO THIS PLAN SHALL BE MADE BY A SEPARATE SHEET OR BY A REVISION TO THIS PLAN. THE ORIGINAL PLAN SHALL BE KEPT IN THE OFFICE OF THE ENGINEER. THE ENGINEER'S OFFICE IS AT 5408 LAKEWAY DRIVE, SUITE 1100, DALLAS, TEXAS 75244. PHONE: (972) 496-0000. FAX: (972) 496-0001.

3042-1B-1-97-11-17-02-03  
 Plot date: 20 JUN 97