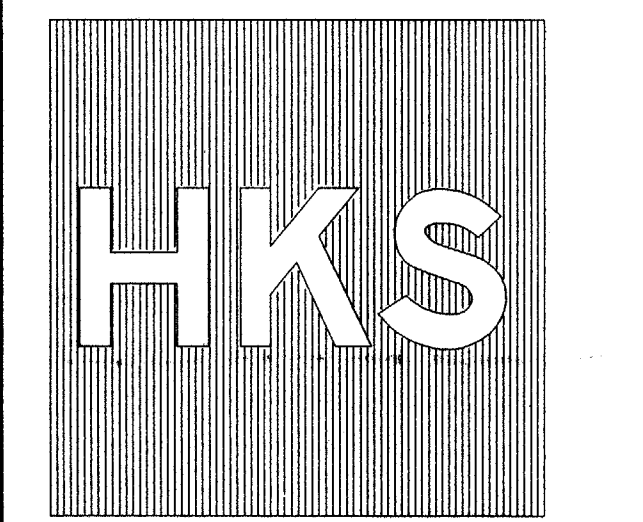


ADDISON CIRCLE OFFICE BUILDING

ADDISON TEXAS

PROCKETTE DAVIS SMITH & ASSOCIATES, INC.
Civil & Mechanical Engineering Services
4100 North Central Expressway, Suite 1000
Dallas, Texas 75204
PH: (214) 760-1000
FAX: (214) 760-1001

HUITT-ZOLLARS, INC.
3111 McKinney Ave., Suite 600
Dallas, TX 75204 214-871-3311



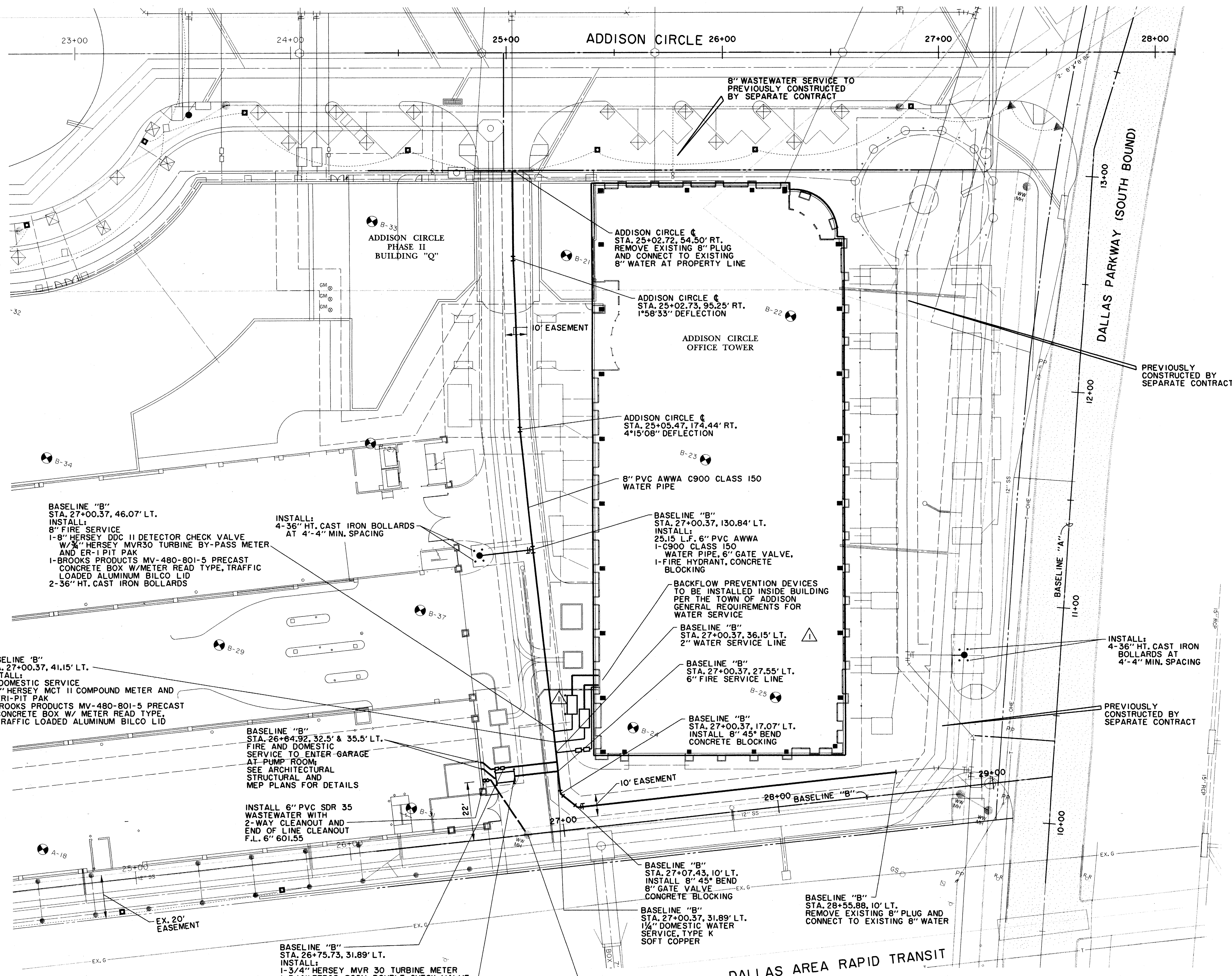
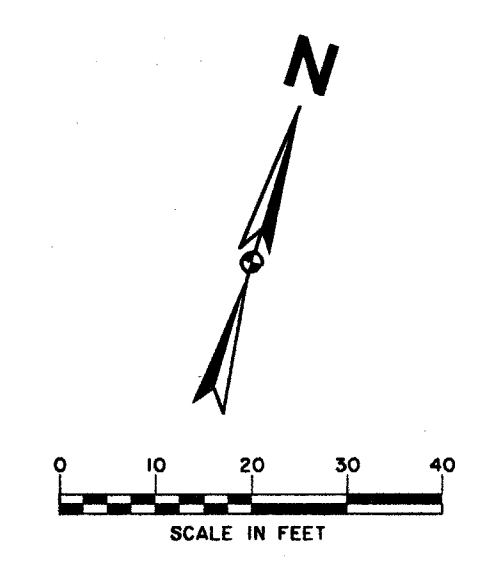
HKS Inc. Architects-Engineers-Planners
700 W. Pearl, Suite 1100, LB 307
Dallas, Texas 75201-7485 (214) 969-5599

Job No: 5494
ISSUED FOR CONSTRUCTION

15 OCT. 1997

RECORD DRAWING
12/4/98
ADDED COOLING TOWER SERVICE LINE; SHIFTED VAULTS & BOLLARDS
1/16/98

Revisions:
Date:
Sheet Title: **WATER & WASTEWATER PLAN**
Sheet No: **C7**



BASELINE "B"
STA. 27+00.37, 46.07' LT.
INSTALL:
8" FIRE SERVICE
1-8" HERSEY DDC II DETECTOR CHECK VALVE
W/3" HERSEY MVR30 TURBINE BY-PASS METER
AND ER-1 PIT PAK
1-BROOKS PRODUCTS MV-480-801-5 PRECAST
CONCRETE BOX W/METER READ TYPE, TRAFFIC
LOADED ALUMINUM BILCO LID
2-36" HT. CAST IRON BOLLARDS

BASELINE "B"
STA. 27+00.37, 41.15' LT.
INSTALL:
4" DOMESTIC SERVICE
1-4" HERSEY MCT II COMPOUND METER AND
ERI-PIT PAK
1-BROOKS PRODUCTS MV-480-801-5 PRECAST
CONCRETE BOX W/ METER READ TYPE,
TRAFFIC LOADED ALUMINUM BILCO LID

BASELINE "B"
STA. 26+64.92, 32.5' & 35.5' LT.
FIRE AND DOMESTIC
SERVICE TO ENTER-GARAGE
AT PUMP ROOM.
SEE ARCHITECTURAL
STRUCTURAL AND
MEP PLANS FOR DETAILS

INSTALL 6" PVC SDR 35
WASTEWATER WITH
2-WAY CLEANOUT AND
END OF LINE CLEANOUT
F.L. 6' 601.55

BASELINE "B"
STA. 26+75.73, 31.89' LT.
INSTALL:
1-3/4" HERSEY MVR 30 TURBINE METER
1-3/4" FEBCO 805Y DOUBLE CHECK VALVE
2-BROOKS PRODUCTS NO. 36-H
10/2"x17/4" PRECAST CONCRETE BOX

BASELINE "B"
STA. 26+81.64, 28.05' LT.
INSTALL:
1-6" HERSEY DDC-II DETECTOR CHECK VALVE
W/3" HERSEY MVR30 TURBINE BY-PASS
METER AND ER-1 PIT PAK
1-BROOKS PRODUCTS MV-480-801-5 PRECAST
CONCRETE BOX W/METER READ TYPE, TRAFFIC
LOADED ALUMINUM BILCO LID
4-36" HT. CAST IRON BOLLARDS

ADDISON CIRCLE
STA. 25+02.72, 54.50' RT.
REMOVE EXISTING 8" PLUG
AND CONNECT TO EXISTING
8" WATER AT PROPERTY LINE

ADDISON CIRCLE
STA. 25+02.73, 95.25' RT.
1"58'33" DEFLECTION

ADDISON CIRCLE
STA. 25+05.47, 174.44' RT.
4'15'08" DEFLECTION

8" PVC AWWA C900 CLASS 150
WATER PIPE

BASELINE "B"
STA. 27+00.37, 130.84' LT.
INSTALL:
25.15' L.F. 6" PVC AWWA
1-C900 CLASS 150
WATER PIPE, 6" GATE VALVE,
1-FIRE HYDRANT, CONCRETE
BLOCKING

BACKFLOW PREVENTION DEVICES
TO BE INSTALLED INSIDE BUILDING
PER THE TOWN OF ADDISON
GENERAL REQUIREMENTS FOR
WATER SERVICE

BASELINE "B"
STA. 27+00.37, 36.15' LT.
2" WATER SERVICE LINE

BASELINE "B"
STA. 27+00.37, 27.55' LT.
6" FIRE SERVICE LINE

BASELINE "B"
STA. 27+00.37, 17.07' LT.
INSTALL 8" 45° BEND
CONCRETE BLOCKING

BASELINE "B"
STA. 27+07.43, 10' LT.
INSTALL 8" 45° BEND
8" GATE VALVE
CONCRETE BLOCKING

BASELINE "B"
STA. 27+00.37, 31.89' LT.
1/2" DOMESTIC WATER
SERVICE, TYPE K
SOFT COPPER

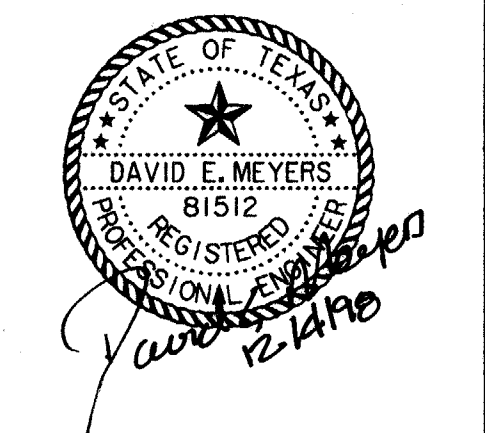
DALLAS AREA RAPID TRANSIT

CONNECT TO EXIST. WW M.H.
EXIST. 12" F.L.=599.97 (IN) WEST
EXIST. 12" F.L.=599.97 (OUT) EAST
PROP. 6" F.L.=600.10 (IN) NORTH

RECORD DRAWING:
THIS DRAWING HAS BEEN MODIFIED FROM THE ORIGINAL
DESIGN DRAWINGS TO REFLECT THE FIELD CHANGES
THAT OCCURRED DURING CONSTRUCTION WHICH WERE
DOCUMENTED AND FURNISHED TO THE ENGINEER
BY THE CONTRACTOR. BASED ON THIS INFORMATION
AND THE ENGINEER'S OBSERVATION OF CERTAIN
CONSTRUCTION ACTIVITIES, TO THE BEST OF THE
ENGINEER'S KNOWLEDGE AND BELIEF, THE PROJECT
IS CONSTRUCTED IN CONFORMANCE WITH THE PLANS
AND SPECIFICATIONS AND WILL FUNCTION AS DESIGNED.

BENCHMARKS:
BM#5
"T" CUT AT NORTHWEST CORNER
OF NORTH HDWL. OF 7X7' BOX
CULVERT UNDER RAILROAD,
180' WEST OF DALLAS
PARKWAY SOUTHBOUND,
ELEV. 610.49
BM#6
"T" CUT AT CENTER FRONT OF
18" REC. INLET, SECOND INLET
NORTH OF RAILROAD TRACKS
ON THE WEST SIDE OF DALLAS
PARKWAY SOUTHBOUND,
ELEV. 605.67

THE SEAL APPEARING ON THIS
DOCUMENT WAS AUTHORIZED BY
DAVID E. MEYERS, P.E. 81512
ON DEC. 4, 1998.



PL 19970101 (REVISED) 11/01/97
P.L. 11/01/97
P.L. 11/01/97

PL 11/01/97 (REVISED) 11/01/97
P.L. 11/01/97
P.L. 11/01/97

PL 11/01/97 (REVISED) 11/01/97
P.L. 11/01/97
P.L. 11/01/97

date:
JUN 97