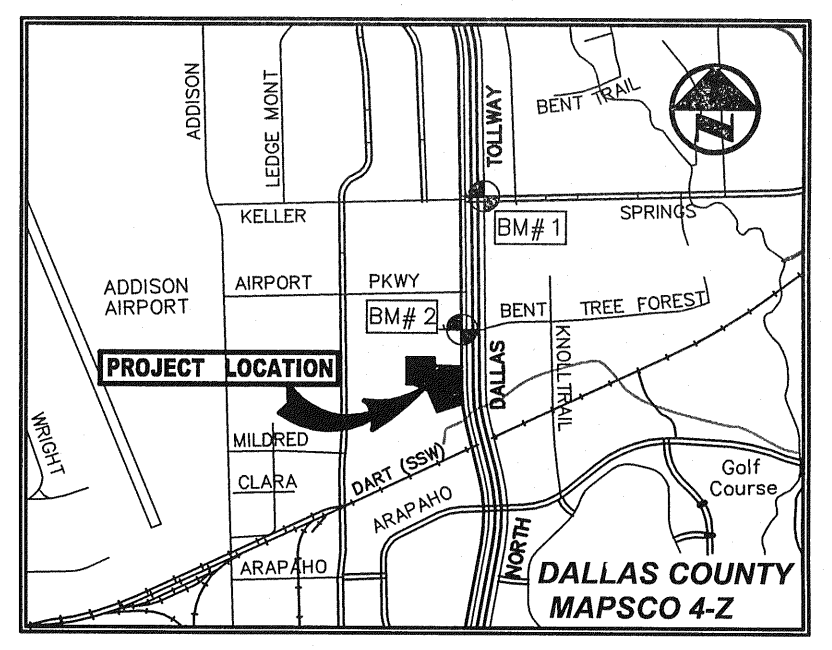
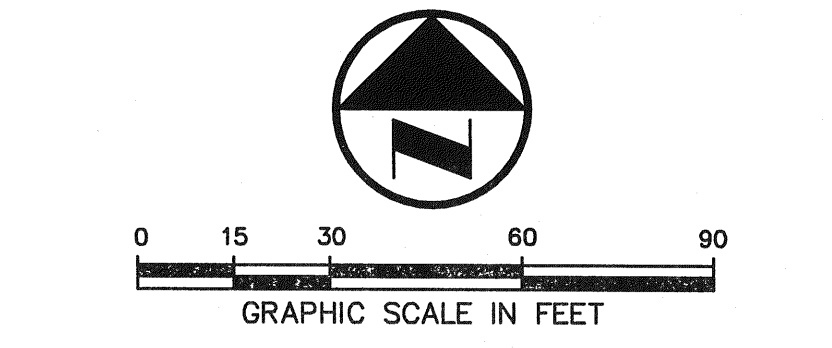


SNK ALLEGRO SPECTRUM, LP  
(VOL. 20070227088)



VICINITY MAP  
(NOT TO SCALE)

**LEGEND**

B	BOLLARD
EM	ELECTRIC METER
PP	POWER POLE
LS	LIGHT STANDARD
WM	WATER METER
WV	WATER VALVE
ICV	IRRIGATION CONTROL VALVE
FH	FIRE HYDRANT
CQ	CLEANOUT
MH	MANHOLE
TSC	TRAFFIC SIGNAL CONTROL
TSP	TRAFFIC SIGNAL POLE
TELE	TELEPHONE BOX
FL	FLOOD LIGHT
FP	FLAG POLE
TSN	TRAFFIC SIGN
IRS	1/2-INCH IRON ROD W/ "PACHECO KOCH" CAP SET
(C.M.)	CONTROLLING MONUMENT
---	PROPERTY LINE
-X-	FENCE
OHL	OVERHEAD UTILITY LINE
E	UNDERGROUND ELECTRIC LINE
T	UNDERGROUND TELEPHONE LINE
C	UNDERGROUND CABLE LINE
6" W	EXISTING UNDERGROUND WATER LINE
6" SS	EXISTING UNDERGROUND SANITARY SEWER LINE
6" W	PROPOSED UNDERGROUND WATER LINE
6" SS	PROPOSED UNDERGROUND SANITARY SEWER LINE

**RECORD DRAWING**  
THIS DRAWING HAS BEEN REVISED TO REFLECT CONSTRUCTION RECORDS MAINTAINED AND PROVIDED BY THE CONTRACTOR FOR THIS PROJECT.  
CONTRACTOR: TRI-DAL, LTD.  
DATE REVISED: SEPTEMBER 28, 2009

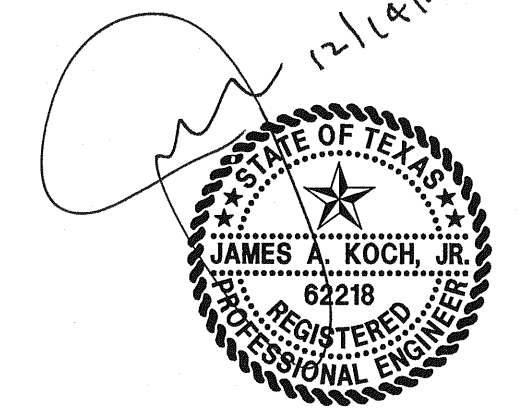
**PW# 2007-010**

NO.	DATE	REVISION
1	09/28/2009	RECORD DRAWINGS
2	03/18/2009	FIRE HYDRANT/MONUMENT SIGN LOCATION/CITY COMMENT
3	10/27/2008	ELECTRICAL SECONDARY AND WATER VAULT CONFLICT
4	10/22/2008	ONCOR CONSTRUCTION COMMENTS
5	10/16/2008	ONCOR CONSTRUCTION COMMENTS
6	09/16/2008	TOWN OF ADDISON COMMENTS
7	08/08/2008	SITE PLAN UPDATE/ONCOR COMMENTS
8	06/10/2008	GARAGE FINISHED FLOOR ELEV/ELEC DUCT BANK ADDITION
9	03/18/2008	FRANCHISE UTILITY LINE CONFLICT REVISION
10	01/23/2008	UTILITY LINE CONFLICT/CITY COMMENTS REVISION
11	01/08/2008	STORM LINE FLOWLINE REVISIONS

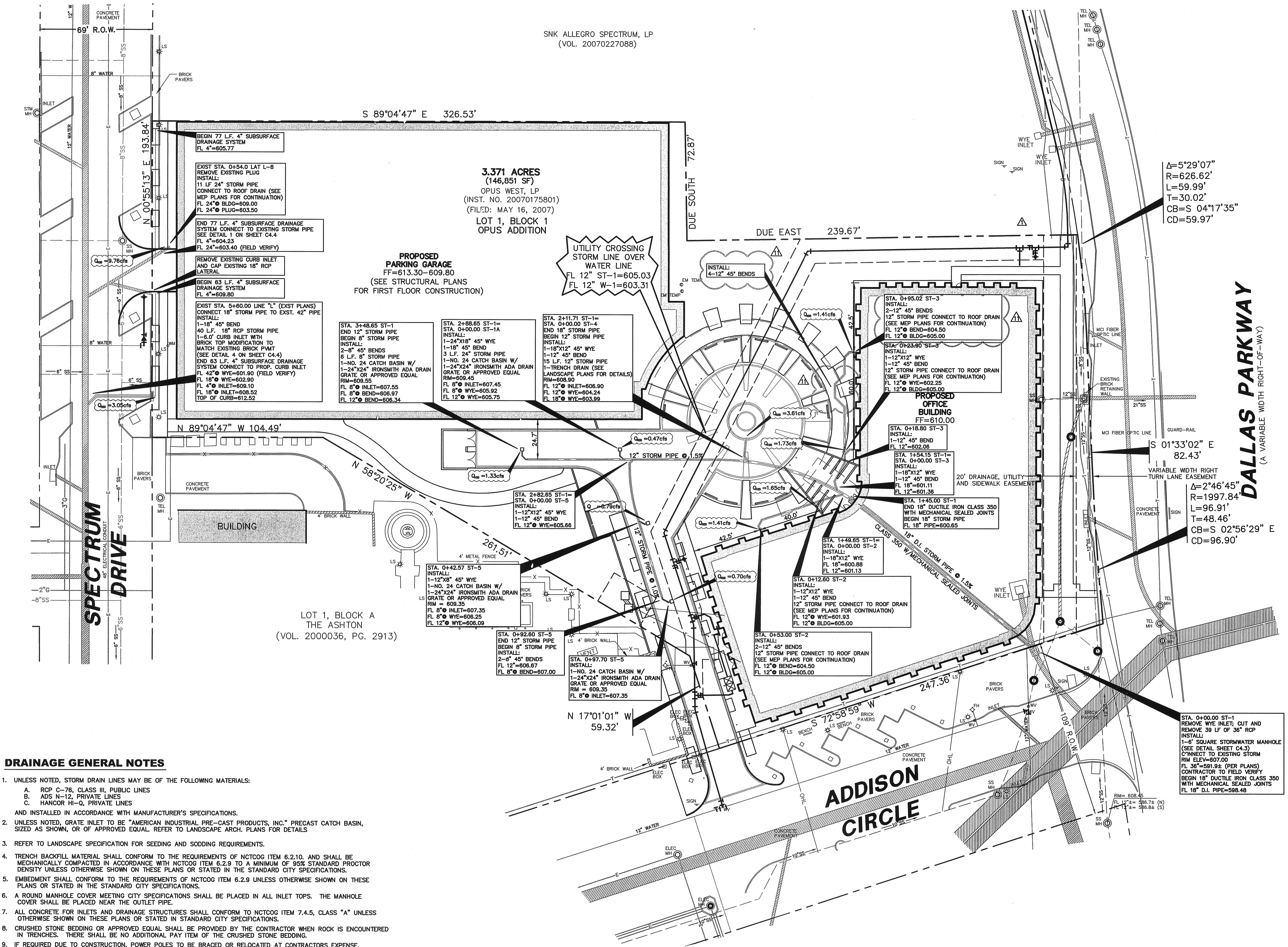
**Pacheco Koch Consulting Engineers**  
8350 N. CENTRAL EXPY. SUITE 1000 DALLAS, TX 75206 TX REG. ENGINEERING FIRM F-469 972.235.3031 TX REG. SURVEYING FIRM LS-100080-00

**STORM DRAINAGE PLAN**  
**TWO ADDISON CIRCLE**  
**3.371 ACRES**  
**15600 DALLAS PARKWAY**  
**TOWN OF ADDISON, TEXAS**

DESIGN	DRAWN	DATE	SCALE	NOTES	FILE	NO.
JAK/KFW	KLH	DEC 2009	1"=30'			<b>C3.2</b>



THE SEAL APPEARING ON THIS DOCUMENT WAS AUTHORIZED BY JAMES A. KOCH, JR. P.E. 62218 ON 12/14/2007. ALTERATION OF A SEALED DOCUMENT WITHOUT PROPER NOTIFICATION TO THE RESPONSIBLE ENGINEER IS AN OFFENSE UNDER THE TEXAS ENGINEERING PRACTICE ACT.



**DRAINAGE GENERAL NOTES**

- UNLESS NOTED, STORM DRAIN LINES MAY BE OF THE FOLLOWING MATERIALS:  
A. RCP C-76, CLASS III, PUBLIC LINES  
B. ADS N-12, PRIVATE LINES  
C. HANCOR HI-Q, PRIVATE LINES  
AND INSTALLED IN ACCORDANCE WITH MANUFACTURER'S SPECIFICATIONS.
- UNLESS NOTED, GRATE INLET TO BE "AMERICAN INDUSTRIAL PRE-CAST PRODUCTS, INC." PRECAST CATCH BASIN, SIZED AS SHOWN, OR OF APPROVED EQUAL. REFER TO LANDSCAPE ARCH. PLANS FOR DETAILS.
- REFER TO LANDSCAPE SPECIFICATION FOR SEEDING AND SOODING REQUIREMENTS.
- TRENCH BACKFILL MATERIAL SHALL CONFORM TO THE REQUIREMENTS OF NCTCOG ITEM 6.2.10. AND SHALL BE MECHANICALLY COMPACTED IN ACCORDANCE WITH NCTCOG ITEM 6.2.9 TO A MINIMUM OF 95% STANDARD PROCTOR DENSITY UNLESS OTHERWISE SHOWN ON THESE PLANS OR STATED IN THE STANDARD CITY SPECIFICATIONS.
- EMBEDMENT SHALL CONFORM TO THE REQUIREMENTS OF NCTCOG ITEM 6.2.9 UNLESS OTHERWISE SHOWN ON THESE PLANS OR STATED IN THE STANDARD CITY SPECIFICATIONS.
- A ROUND MANHOLE COVER MEETING CITY SPECIFICATIONS SHALL BE PLACED IN ALL INLET TOPS. THE MANHOLE COVER SHALL BE PLACED NEAR THE OUTLET PIPE.
- ALL CONCRETE FOR INLETS AND DRAINAGE STRUCTURES SHALL CONFORM TO NCTCOG ITEM 7.4.5, CLASS "A" UNLESS OTHERWISE SHOWN ON THESE PLANS OR STATED IN STANDARD CITY SPECIFICATIONS.
- CRUSHED STONE BEDDING OR APPROVED EQUAL SHALL BE PROVIDED BY THE CONTRACTOR WHEN ROCK IS ENCOUNTERED IN TRENCHES. THERE SHALL BE NO ADDITIONAL PAY ITEM OF THE CRUSHED STONE BEDDING.
- IF REQUIRED DUE TO CONSTRUCTION, POWER POLES TO BE BRACED OR RELOCATED AT CONTRACTORS EXPENSE.

**BENCH MARK LIST**

BM# 1 STANDARD CITY OF DALLAS WATER DEPT. BENCHMARK - " " CUT FOUND ON CENTERLINE OF CURB INLET ON THE NORTHEAST CORNER OF KELLER SPRINGS ROAD AND DALLAS NORTH TOLLWAY. ELEV=615.00  
BM# 2 " " CUT SET ON CENTERLINE OF INLET 174± NORTH OF NORTHEAST PROPERTY CORNER OF SAID PROPERTY. ELEV=607.34

KWHITS 12/30/2009 9:42AM M:\DWG-2840-07\15600-DWG\2840-07-15600.DWG

TWO ADDISON CIRCLE