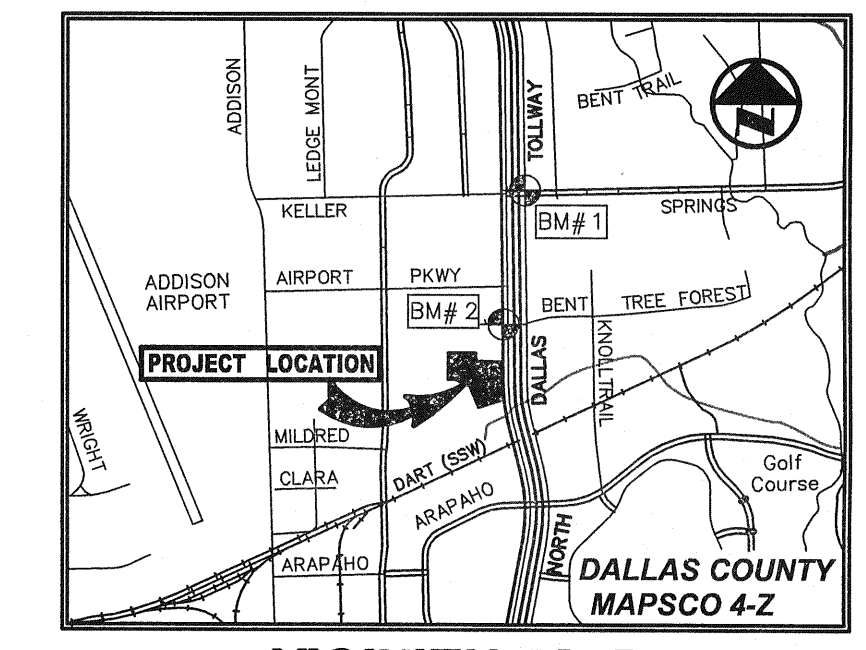
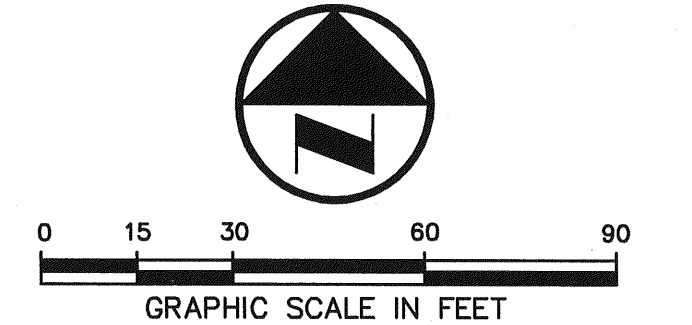


SNK ALLEGRO SPECTRUM, LP
(VOL. 20070227088)



VICINITY MAP
(NOT TO SCALE)

LEGEND

| | |
|--------|---|
| B | BOLLARD |
| EM | ELECTRIC METER |
| PP | POWER POLE |
| LS | LIGHT STANDARD |
| WM | WATER METER |
| WV | WATER VALVE |
| ICV | IRRIGATION CONTROL VALVE |
| FH | FIRE HYDRANT |
| CL | CLEANOUT |
| MH | MANHOLE |
| TSC | TRAFFIC SIGNAL CONTROL |
| TSP | TRAFFIC SIGNAL POLE |
| TELE | TELEPHONE BOX |
| FL | FLOOD LIGHT |
| FP | FLAG POLE |
| TR | TRAFFIC SIGN |
| IRS | 1/2-INCH IRON ROD W/PACHECO KOCH CAP SET |
| (C.M.) | CONTROLLING MONUMENT |
| --- | PROPERTY LINE |
| -X- | FENCE |
| OH | OVERHEAD UTILITY LINE |
| E | UNDERGROUND ELECTRIC LINE |
| T | UNDERGROUND TELEPHONE LINE |
| C | UNDERGROUND CABLE LINE |
| --- | EXISTING UNDERGROUND WATER LINE |
| --- | EXISTING UNDERGROUND SANITARY SEWER LINE |
| --- | PROPOSED UNDERGROUND WATER LINE |
| --- | PROPOSED UNDERGROUND SANITARY SEWER LINE |

NOTE: DOMESTIC WATER METER TO BE HERSEY MVR TURBINE METER WITH TEST PORT, ELECTRONIC REGISTER AND TOUCH PAD WITH BYPASS, BROOKS PRODUCTS MV 480-801-5 PRECAST BOX WITH TOUCH PAD ON LID, OR TOWN APPROVED EQUAL

CAUTION EXISTING UTILITIES !!!
EXISTING UTILITIES AND UNDERGROUND FACILITIES INDICATED IN THESE PLANS HAVE BEEN LOCATED FROM REFERENCE INFORMATION. IT SHALL BE THE RESPONSIBILITY OF THE CONTRACTOR TO VERIFY BOTH HORIZONTALLY AND VERTICALLY THE LOCATION OF ALL EXISTING UTILITIES AND UNDERGROUND FACILITIES PRIOR TO CONSTRUCTION. TO TAKE THE NECESSARY PRECAUTION IN ORDER TO PROTECT ALL FACILITIES ENCOUNTERED. THE CONTRACTOR SHALL PRESERVE AND PROTECT ALL EXISTING UTILITIES FROM DAMAGE DURING CONSTRUCTION.

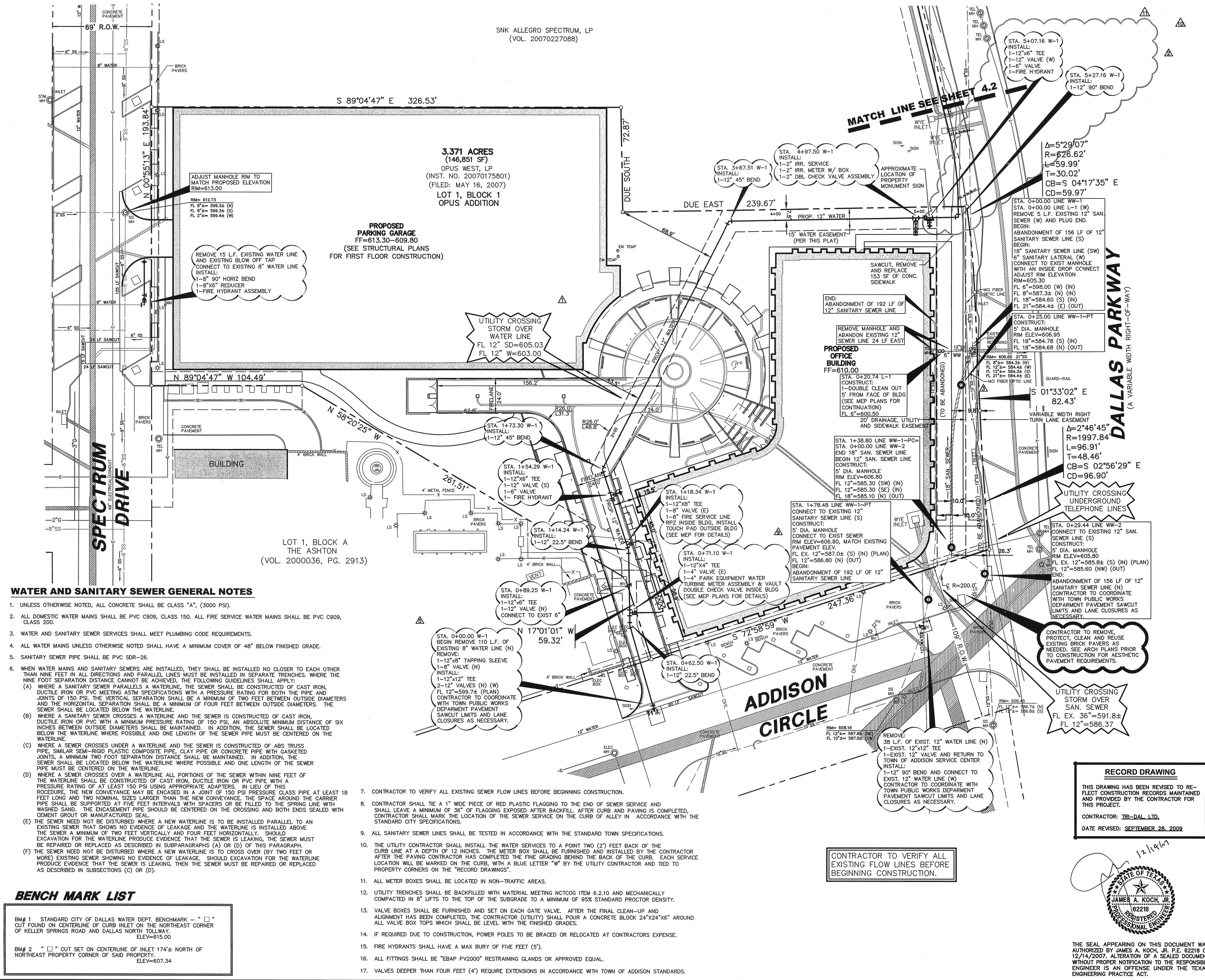
PW# 2007-010

| NO. | DATE | REVISION |
|------------|------|--|
| 09/28/2009 | | RECORD DRAWINGS |
| 03/18/2009 | | FIRE HYDRANT/MONUMENT SIGN LOCATION/CITY COMMENT |
| 10/27/2008 | | ELECTRICAL SECONDARY AND WATER VAULT CONFLICT |
| 10/22/2008 | | ONCOR CONSTRUCTION COMMENTS |
| 10/16/2008 | | ONCOR CONSTRUCTION COMMENTS |
| 09/16/2008 | | TOWN OF ADDISON COMMENTS |
| 08/08/2008 | | SITE PLAN UPDATE/ONCOR COMMENTS |
| 06/10/2008 | | GARAGE FINISHED FLOOR ELEV/ELEC DUCT BANK ADDITION |
| 03/18/2008 | | FRANCHISE UTILITY LINE CONFLICT REVISION |
| 01/23/2008 | | UTILITY LINE CONFLICT/CITY COMMENTS REVISION |
| 01/08/2008 | | STORM LINE FLOWLINE REVISIONS |

Pacheco Koch Consulting Engineers
8350 N. CENTRAL EXPY., SUITE 1000 TX REG. ENGINEERING FIRM F-469
DALLAS, TX 75206 972.235.3031 TX REG. SURVEYING FIRM LS-10080-00

WATER & SANITARY SEWER PLAN
TWO ADDISON CIRCLE
3.371 ACRES
15600 DALLAS PARKWAY
TOWN OF ADDISON, TEXAS

| DESIGN | DRAWN | DATE | SCALE | NOTES | FILE | NO. |
|---------|---------|----------|--------|-------|------|-------------|
| JAK/KFW | KLH/JHB | DEC 2009 | 1"=30' | | | C4.1 |

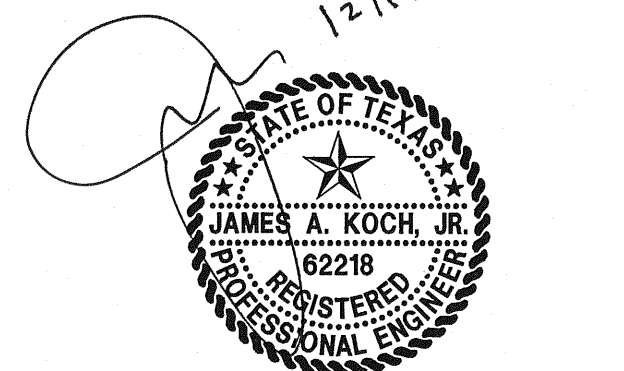


BENCH MARK LIST

| | |
|-------|--|
| BM# 1 | STANDARD CITY OF DALLAS WATER DEPT. BENCHMARK - " " " CUT FOUND ON CENTERLINE OF CURB INLET ON THE NORTHEAST CORNER OF KELLER SPRINGS ROAD AND DALLAS NORTH TOLLWAY. ELEV=615.00 |
| BM# 2 | " " " CUT SET ON CENTERLINE OF INLET 174± NORTH OF NORTHEAST PROPERTY CORNER OF SAID PROPERTY. ELEV=607.34 |

RECORD DRAWING
THIS DRAWING HAS BEEN REVISED TO REFLECT CONSTRUCTION RECORDS MAINTAINED AND PROVIDED BY THE CONTRACTOR FOR THIS PROJECT.
CONTRACTOR: TRI-DAL, LTD.
DATE REVISED: SEPTEMBER 28, 2009

CONTRACTOR TO VERIFY ALL EXISTING FLOW LINES BEFORE BEGINNING CONSTRUCTION.



THE SEAL APPEARING ON THIS DOCUMENT WAS AUTHORIZED BY JAMES A. KOCH, JR., P.E. 62218 ON 12/14/2007. ALTERATION OF A SEALED DOCUMENT WITHOUT PROPER NOTIFICATION TO THE RESPONSIBLE ENGINEER IS AN OFFENSE UNDER THE TEXAS ENGINEERING PRACTICE ACT.

K:\DWG\2840-07-156C\DWG\2840-07-156C.DWG

TWO ADDISON CIRCLE