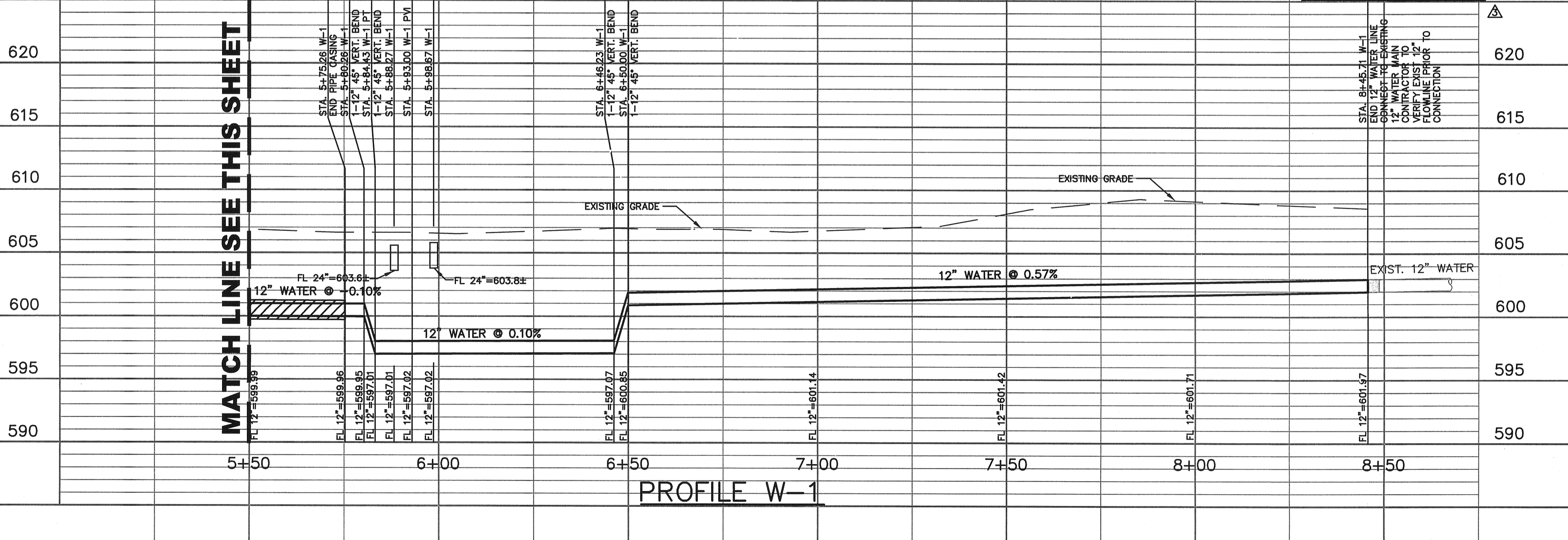
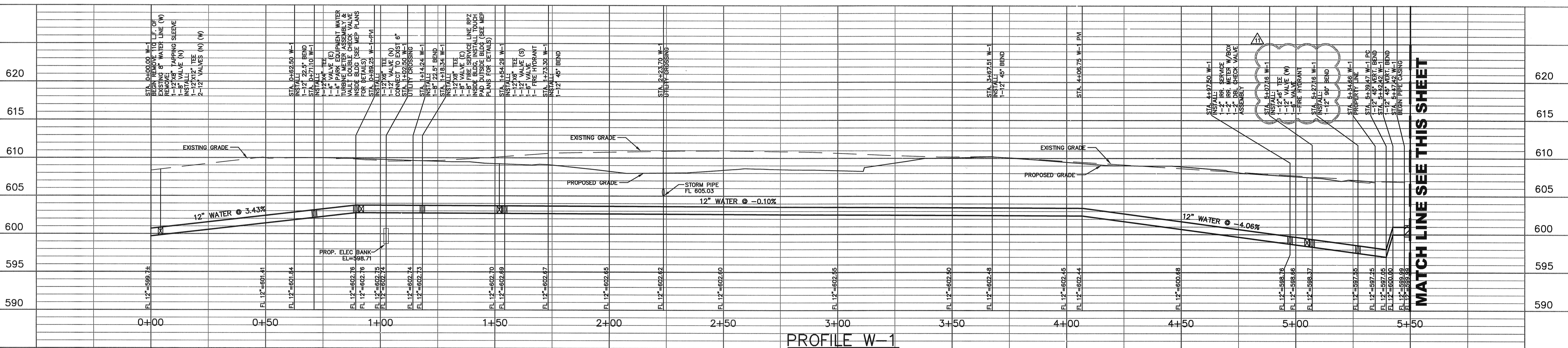
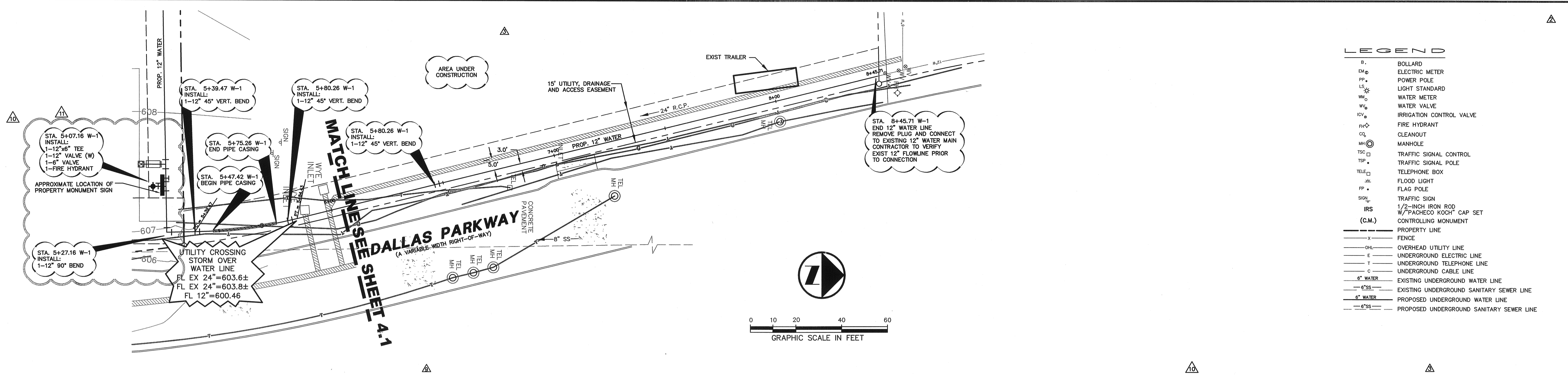


K:\MITS 12/30/2009 - 9:50AM
M:\DWG-28\2840-07.156\DWG\2840-07-156\PROFILE.DWG



MATCH LINE SEE THIS SHEET

PW# 2007-010

RECORD DRAWING

THIS DRAWING HAS BEEN REVISED TO REFLECT CONSTRUCTION RECORDS MAINTAINED AND PROVIDED BY THE CONTRACTOR FOR THIS PROJECT.

CONTRACTOR: JRI-DAL, LTD.
DATE REVISED: SEPTEMBER 28, 2009

12/14/07

STATE OF TEXAS
JAMES A. KOCH, JR.
REGISTERED PROFESSIONAL ENGINEER
62218

THE SEAL APPEARING ON THIS DOCUMENT WAS AUTHORIZED BY JAMES A. KOCH, JR., P.E. 62218 ON 12/14/2007. ALTERATION OF A SEALED DOCUMENT WITHOUT PROPER NOTIFICATION TO THE RESPONSIBLE ENGINEER IS AN OFFENSE UNDER THE TEXAS ENGINEERING PRACTICE ACT.

NO.	DATE	REVISION
⊠	09/28/2009	RECORD DRAWINGS
⊠	03/16/2009	FIRE HYDRANT/MONUMENT SIGN LOCATION/CITY COMMENT
⊠	10/27/2008	ELECTRICAL SECONDARY AND WATER VAULT CONFLICT
⊠	10/22/2008	ONCOR CONSTRUCTION COMMENTS
⊠	10/16/2008	ONCOR CONSTRUCTION COMMENTS
⊠	09/16/2008	TOWN OF ADDISON COMMENTS
⊠	08/08/2008	SITE PLAN UPDATE/ONCOR COMMENTS
⊠	06/10/2008	GARAGE FINISHED FLOOR ELEV/ELEC DUCT BANK ADDITION
⊠	03/18/2008	FRANCHISE UTILITY LINE CONFLICT REVISION
⊠	01/23/2008	UTILITY LINE CONFLICT/CITY COMMENTS REVISION
⊠	01/08/2008	STORM LINE FLOWLINE REVISIONS

Pacheco Koch Consulting Engineers
8350 N. CENTRAL EXPWY., SUITE 1000 TX REG. ENGINEERING FIRM F-469
DALLAS, TX 75208 972.235.3031 TX REG. SURVEYING FIRM LS-100080-00

WATER PLAN & PROFILES

TWO ADDISON CIRCLE
3.371 ACRES
15600 DALLAS PARKWAY
TOWN OF ADDISON, TEXAS

DESIGN	DRAWN	DATE	SCALE	NOTES	FILE	NO.
JAK/KFW	KLH	DEC 2009	H:1"=20' V:1"=6'			C4.2

DWG FILE: 2840-07-156\PROFILE.DWG