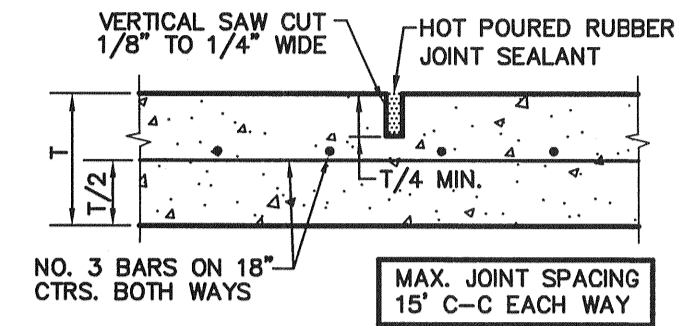
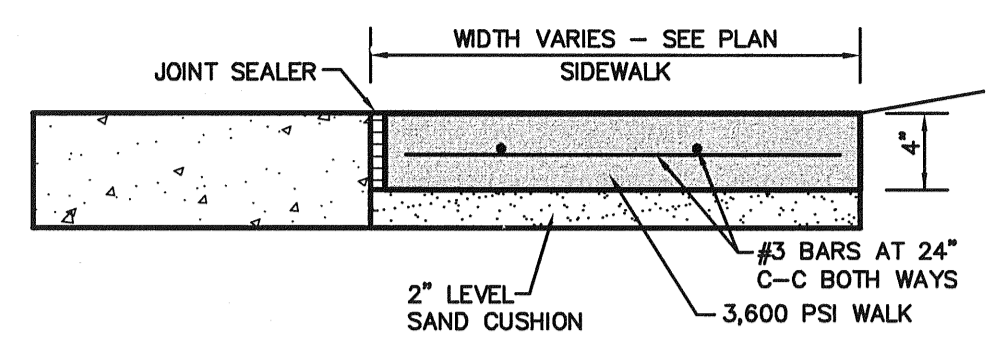


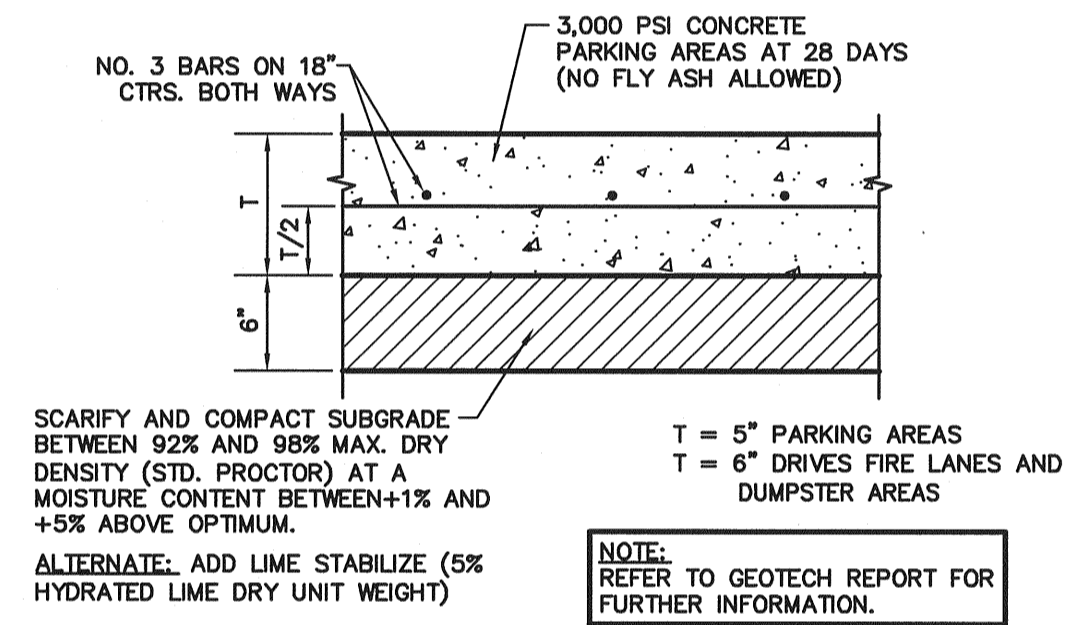
1 PAVEMENT CONNECTION
NOT TO SCALE



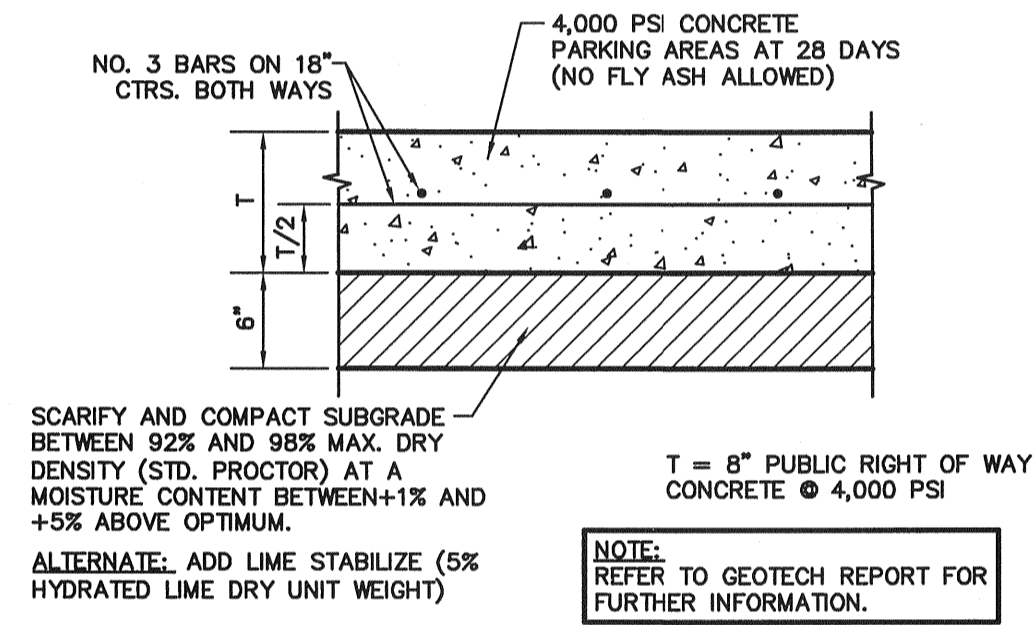
2 SAWED DUMMY JOINT
NOT TO SCALE



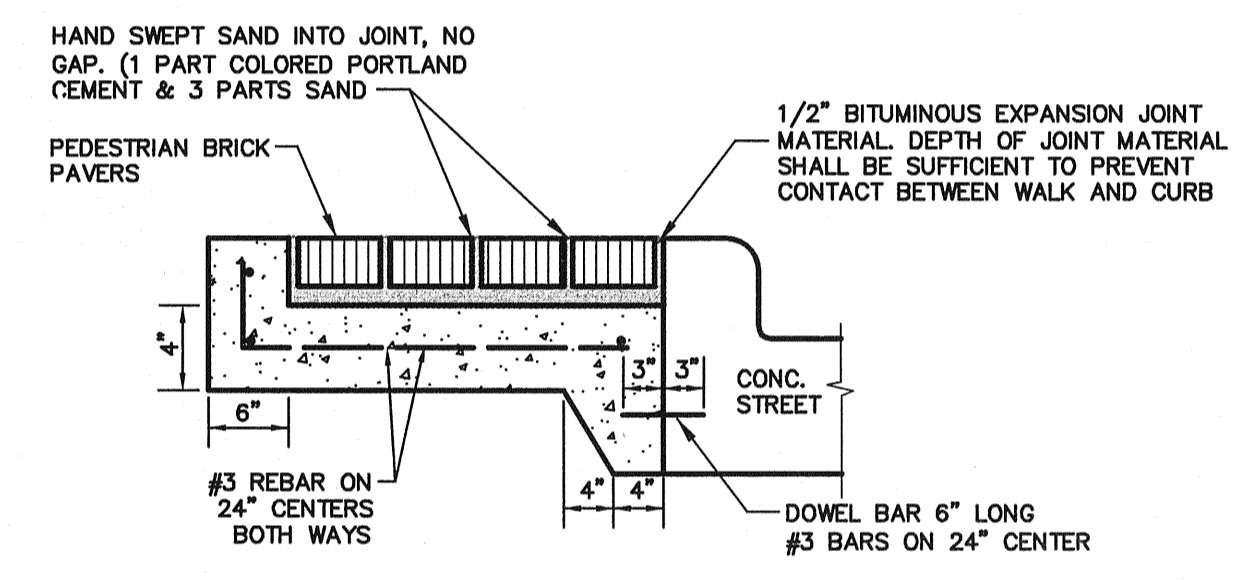
3 WALK AT PROPOSED PAVEMENT (PRIVATE)
NOT TO SCALE



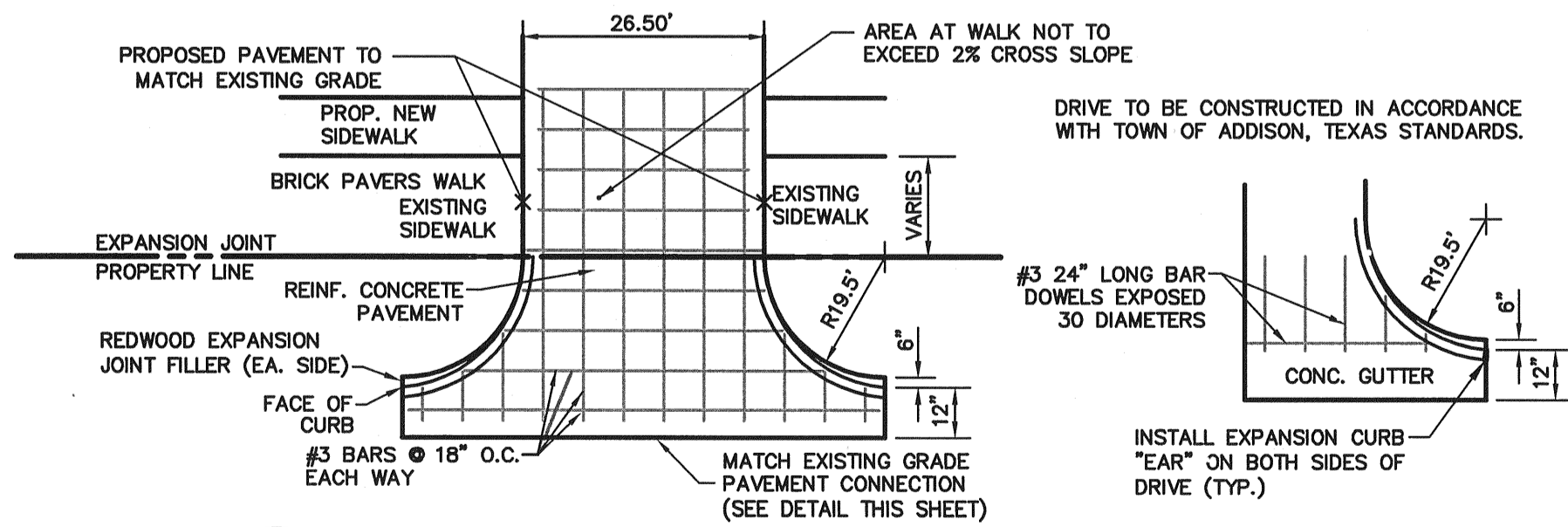
4 CONCRETE PAVEMENT SECTION (PRIVATE)
NOT TO SCALE



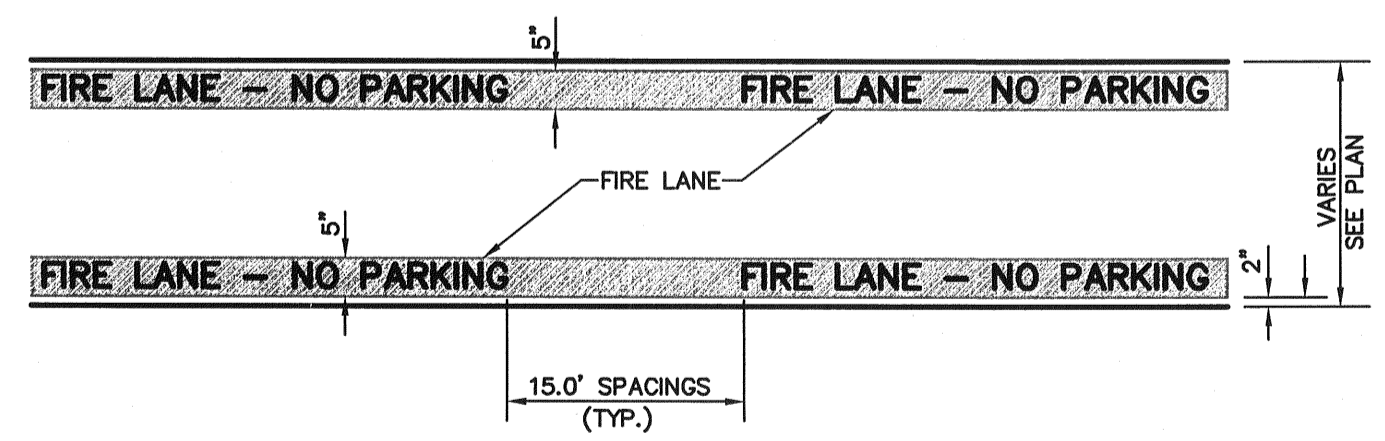
5 CONCRETE PAVEMENT SECTION (PUBLIC)
NOT TO SCALE



6 BRICK PAVERS AT CURB (PUBLIC)
NOT TO SCALE



7 DRIVEWAY APPROACH
NOT TO SCALE



8 FIRE LANE STRIPING
NOT TO SCALE

RECORD DRAWING
THIS DRAWING HAS BEEN REVISED TO REFLECT CONSTRUCTION RECORDS MAINTAINED AND PROVIDED BY THE CONTRACTOR FOR THIS PROJECT.
CONTRACTOR: TRI-DAL, LTD.
DATE REVISED: SEPTEMBER 28, 2009

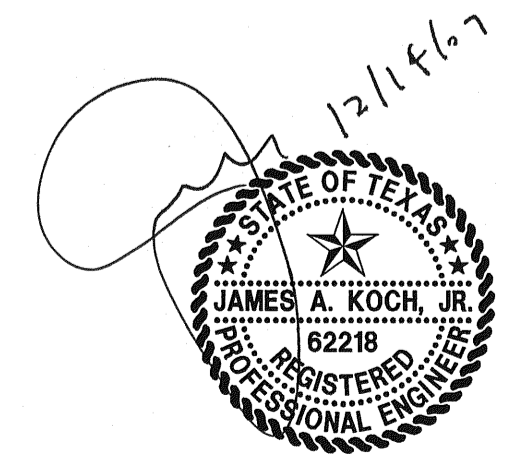
PW# 2007-010

NO.	DATE	REVISION
△	09/28/2009	RECORD DRAWINGS
△	03/18/2009	FIRE HYDRANT/ALIGNMENT SIGN LOCATION/CITY COMMENT
△	10/27/2008	ELECTRICAL SECONDARY AND WATER VAULT CONFLICT
△	10/22/2008	ONCOR CONSTRUCTION COMMENTS
△	10/16/2008	ONCOR CONSTRUCTION COMMENTS
△	09/16/2008	TOWN OF ADDISON COMMENTS
△	08/08/2008	SITE PLAN UPDATE/ONCOR COMMENTS
△	06/10/2008	GARAGE FINISHED FLOOR ELEV/ELEC DUCT BANK ADDITION
△	03/18/2008	FRANCHISE UTILITY LINE CONFLICT REVISION
△	01/23/2008	UTILITY LINE CONFLICT/CITY COMMENTS REVISION
△	01/08/2008	STORM LINE FLOWLINE REVISIONS

Pacheco Koch Consulting Engineers
8350 N. CENTRAL EXPWY. SUITE 1000 TX REG. ENGINEERING FIRM F-469
DALLAS, TX 75208 972.235.3031 TX REG. SURVEYING FIRM LS-100080-00

PAVING DETAILS
TWO ADDISON CIRCLE
3.371 ACRES
15600 DALLAS PARKWAY
TOWN OF ADDISON, TEXAS

DESIGN	DRAWN	DATE	SCALE	NOTES	FILE	NO.
JAK/KFW	KLH	DEC 2009	NTS			C5.2



THE SEAL APPEARING ON THIS DOCUMENT WAS AUTHORIZED BY JAMES A. KOCH, JR., P.E. 62218 ON 12/14/2007. ALTERATION OF A SEALED DOCUMENT WITHOUT PROPER NOTIFICATION TO THE RESPONSIBLE ENGINEER IS AN OFFENSE UNDER THE TEXAS ENGINEERING PRACTICE ACT.

KWH/TJS
12/30/2009 - 9:43AM
M: DWG-28,2840-07,15600.DWG 2840-07-15600.DWG

TWO ADDISON CIRCLE