

CONSTRUCTION PLANS FOR **TWO ADDISON CIRCLE** **15600 DALLAS PARKWAY**

3.371 ACRES
TOWN OF ADDISON, DALLAS COUNTY, TEXAS

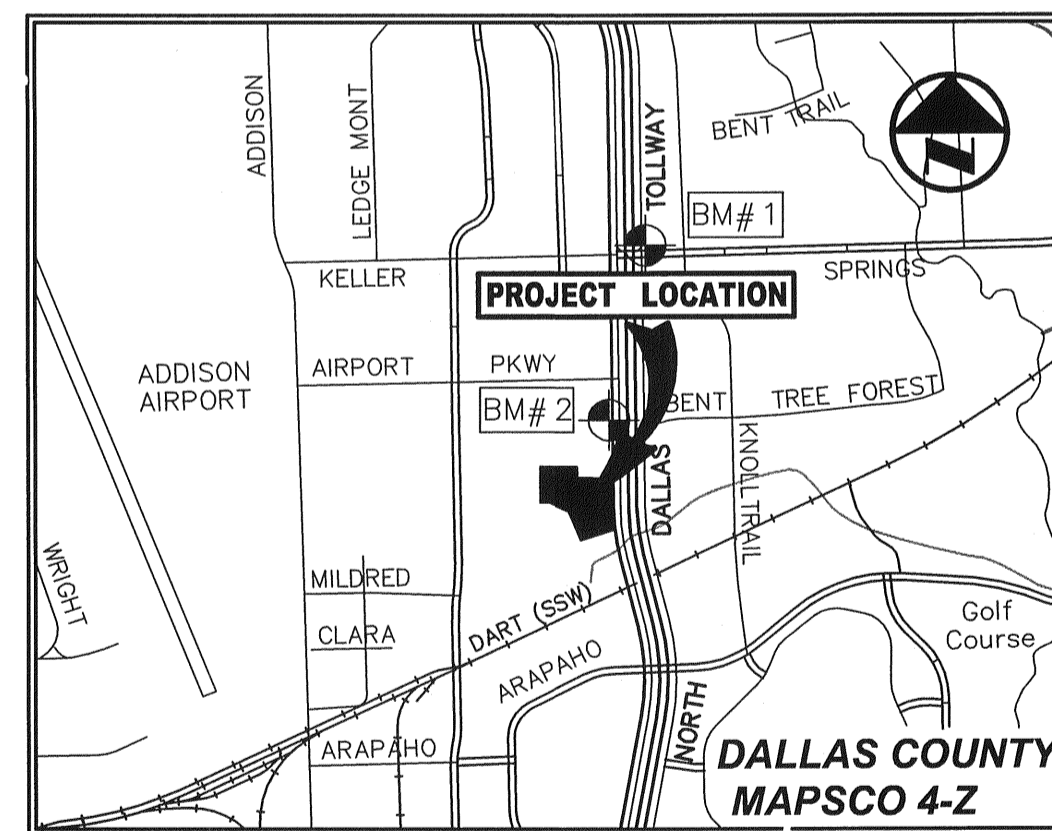
PW# 2007-010

OWNER

OPUS
BUILDING BEYOND
15455 NORTH DALLAS PARKWAY
SUITE 450
ADDISON, TX 75001
972-480-9787

PREPARED BY

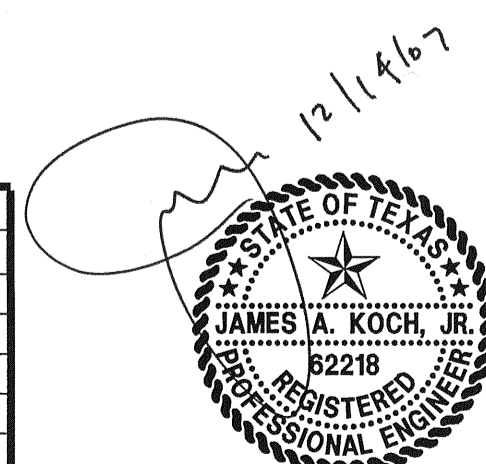
Pacheco Koch
Consulting Engineers
8350 N. CENTRAL EXPWY., SUITE 1000 PH. 972.235.3031
DALLAS, TEXAS 75206 FAX 972.235.9544
TX REG. ENGINEERING FIRM F-469
TX REG. SURVEYING FIRM LS-100080-00



VICINITY MAP
(NOT TO SCALE)

RECORD DRAWING
THIS DRAWING HAS BEEN REVISED TO REFLECT CONSTRUCTION RECORDS MAINTAINED AND PROVIDED BY THE CONTRACTOR FOR THIS PROJECT.
CONTRACTOR: IRL-DAL LTD.
DATE REVISED: SEPTEMBER 28, 2009

NO.	DATE	REVISION
△	09/28/2009	RECORD DRAWINGS
△	03/18/2009	FIRE HYDRANT/MONUMENT SIGN LOCATION/CITY COMMENT
△	10/27/2008	ELECTRICAL SECONDARY AND WATER VAULT CONFLICT
△	10/22/2008	ONCOR CONSTRUCTION COMMENTS
△	10/16/2008	ONCOR CONSTRUCTION COMMENTS
△	09/16/2008	TOWN OF ADDISON COMMENTS
△	08/08/2008	SITE PLAN UPDATE/ONCOR COMMENTS
△	05/10/2008	GARAGE FINISHED FLOOR ELEV/ELEC DUCT BANK ADDITION
△	03/18/2008	FRANCHISE UTILITY LINE CONFLICT REVISION
△	01/23/2008	UTILITY LINE CONFLICT/CITY COMMENTS REVISION
△	01/08/2008	STORM LINE FLOWLINE REVISIONS



THE SEAL APPEARING ON THIS DOCUMENT WAS AUTHORIZED BY JAMES A. KOCH, JR., P.E. 62218 ON 12/14/2007. ALTERATION OF A SEALED DOCUMENT WITHOUT PROPER NOTIFICATION TO THE RESPONSIBLE ENGINEER IS AN OFFENSE UNDER THE TEXAS ENGINEERING PRACTICE ACT.

DRAWING SHEET INDEX

SHEET	DESCRIPTION
C0.1	COVER SHEET
C0.2	FINAL PLAT
C1.1	DIMENSIONAL CONTROL PLAN
C2.1	GRADING PLAN
C3.1	DRAINAGE AREA MAP
C3.2	STORM DRAINAGE PLAN
C4.1	WATER & SANITARY SEWER PLAN
C4.2 - C4.3	WATER & SANITARY PROFILES
C4.4 - C4.5	UTILITY DETAILS
C5.1	PAVING PLAN
C5.2	PAVIING DETAILS
C6.1	EROSION CONTROL PLAN
C6.2	EROSION CONTROL DETAILS
E-1	ONCOR ELECTRICAL DUCT BANK PLAN & PROFILE

P:\DWG\2840-07-156CV.DWG 12/30/2009 9:42AM M:\DWG\2840-07-156CV.DWG

TWO ADDISON CIRCLE