

VICINITY MAP (NOT TO SCALE)

LEGEND

- B. BOLLARD
- EM. ELECTRIC METER
- PP. POWER POLE
- LS. LIGHT STANDARD
- WM. WATER METER
- WV. WATER VALVE
- ICV. IRRIGATION CONTROL VALVE
- FH. FIRE HYDRANT
- CO. CLEANOUT
- MH. MANHOLE
- TSC. TRAFFIC SIGNAL CONTROL
- TSP. TRAFFIC SIGNAL POLE
- TELE. TELEPHONE BOX
- FL. FLOOD LIGHT
- FP. FLAG POLE
- TS. TRAFFIC SIGN
- IRS. 1/2" IRON ROD W/ "PACHECO KOCH" CAP SET
- (C.M.) CONTROLLING MONUMENT
- PROPERTY LINE
- X. FENCE
- OHL. OVERHEAD UTILITY LINE
- E. UNDERGROUND ELECTRIC LINE
- T. UNDERGROUND TELEPHONE LINE
- C. UNDERGROUND CABLE LINE
- 6" WATER. EXISTING UNDERGROUND WATER LINE
- 6" SS. EXISTING UNDERGROUND SANITARY SEWER LINE
- 6" WATER. PROPOSED UNDERGROUND WATER LINE
- 6" SS. PROPOSED UNDERGROUND SANITARY SEWER LINE
- 613. EXIST. CONTOUR
- 612.39. EXIST. SPOT ELEVATION
- TC 612.39. EXIST. TOP OF CURB ELEVATION
- G 611.92. EXIST. GUTTER ELEVATION
- . PROPOSED DRAINAGE FLOW DIRECTION
- TC 609.10. PROPOSED TOP OF CURB ELEVATION
- G 608.60. PROPOSED GUTTER ELEVATION
- 655. PROPOSED CONTOUR
- FF=610.0. FINISHED FLOOR ELEVATION
- . PROPOSED SWALE
- . RIDGE LINE
- X. EL. 607.48. PROPOSED SPOT ELEVATION

RECORD DRAWING

THIS DRAWING HAS BEEN REVISED TO REFLECT CONSTRUCTION RECORDS MAINTAINED AND PROVIDED BY THE CONTRACTOR FOR THIS PROJECT.

CONTRACTOR: IRI-DAL LTD.

DATE REVISED: SEPTEMBER 28, 2009

PW# 2007-010

NO.	DATE	REVISION
09/28/2009		RECORD DRAWINGS
03/18/2009		FIRE HYDRANT/MONUMENT SIGN LOCATION/CITY COMMENT
10/27/2008		ELECTRICAL SECONDARY AND WATER VAULT CONFLICT
10/22/2008		ONCOR CONSTRUCTION COMMENTS
10/16/2008		ONCOR CONSTRUCTION COMMENTS
09/16/2008		TOWN OF ADDISON COMMENTS
08/08/2008		SITE PLAN UPDATE/ONCOR COMMENTS
06/10/2008		GARAGE FINISHED FLOOR ELEV/ELEC DUCT BANK ADDITION
03/18/2008		FRANCHISE UTILITY LINE CONFLICT REVISION
01/23/2008		UTILITY LINE CONFLICT/CITY COMMENTS REVISION
01/08/2008		STORM LINE FLOWLINE REVISIONS

Pacheco Koch Consulting Engineers
 8350 N. CENTRAL EXPWY. SUITE 1000 TX REG. ENGINEERING FIRM F-469
 DALLAS, TX 75206 972.235.3031 TX REG. SURVEYING FIRM LS-100080-00

GRADING PLAN

TWO ADDISON CIRCLE

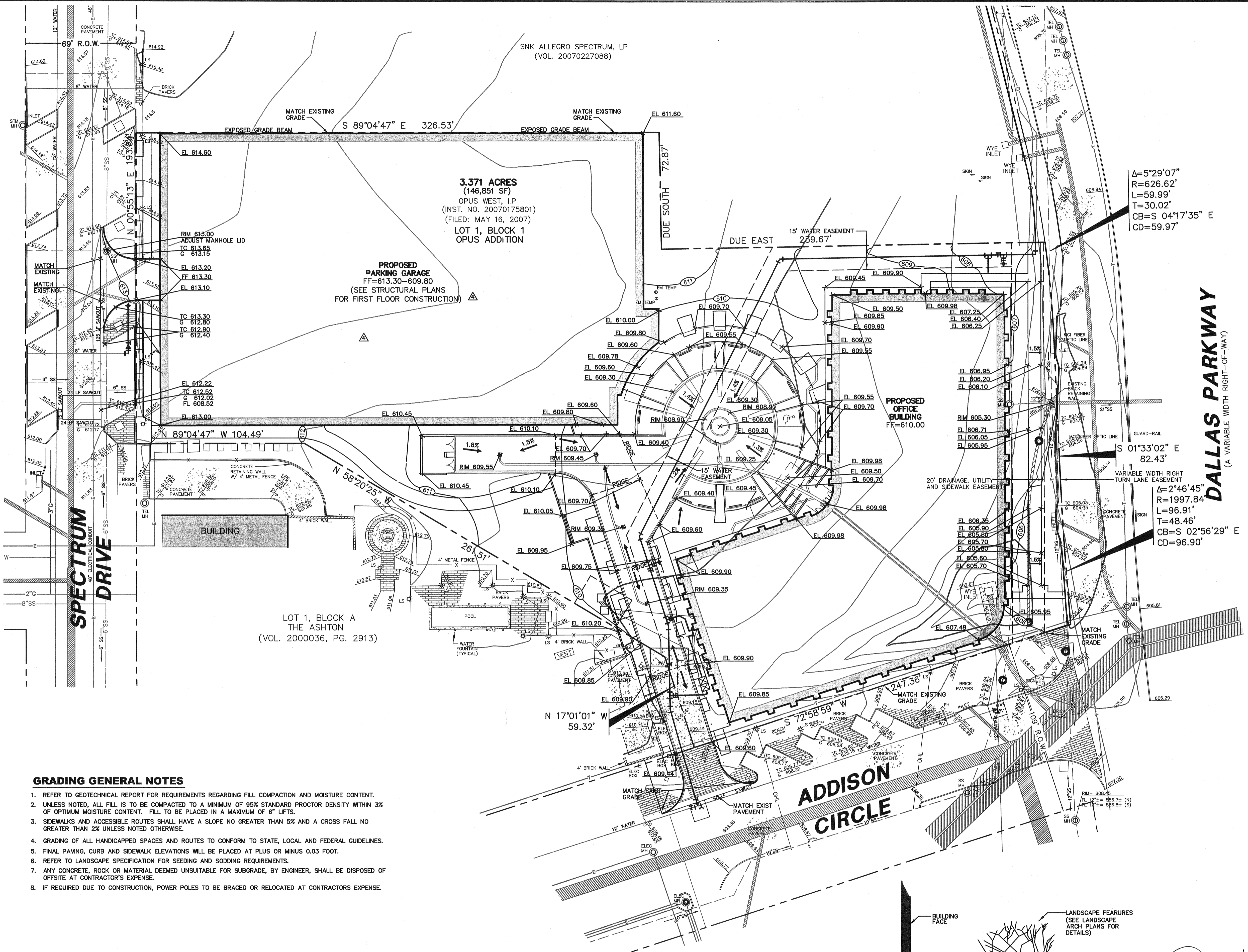
3.371 ACRES

15600 DALLAS PARKWAY

TOWN OF ADDISON, TEXAS

DESIGN	DRAWN	DATE	SCALE	NOTES	FILE	NO.
JAK/KFW	KLH	DEC 2009	1"=30'			C2.1

TWO ADDISON CIRCLE



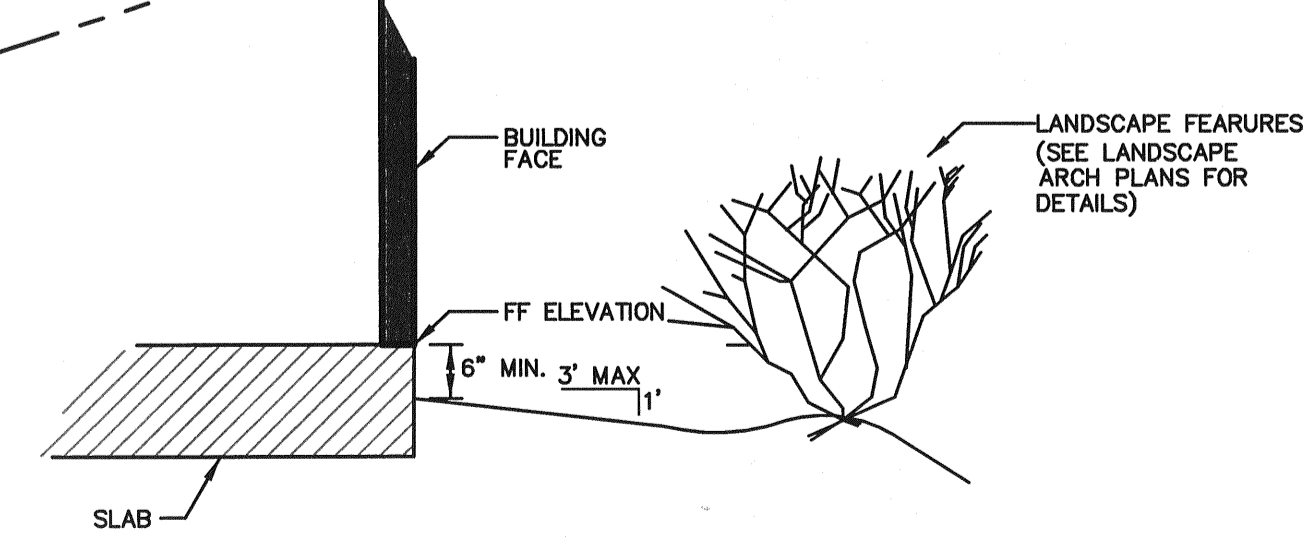
GRADING GENERAL NOTES

- REFER TO GEOTECHNICAL REPORT FOR REQUIREMENTS REGARDING FILL COMPACTION AND MOISTURE CONTENT.
- UNLESS NOTED, ALL FILL IS TO BE COMPACTED TO A MINIMUM OF 95% STANDARD PROCTOR DENSITY WITHIN 3% OF OPTIMUM MOISTURE CONTENT. FILL TO BE PLACED IN A MAXIMUM OF 6" LIFTS.
- SIDEWALKS AND ACCESSIBLE ROUTES SHALL HAVE A SLOPE NO GREATER THAN 5% AND A CROSS FALL NO GREATER THAN 2% UNLESS NOTED OTHERWISE.
- GRADING OF ALL HANDICAPPED SPACES AND ROUTES TO CONFORM TO STATE, LOCAL AND FEDERAL GUIDELINES.
- FINAL PAVING, CURB AND SIDEWALK ELEVATIONS WILL BE PLACED AT PLUS OR MINUS 0.03 FOOT.
- REFER TO LANDSCAPE SPECIFICATION FOR SEEDING AND SODDING REQUIREMENTS.
- ANY CONCRETE, ROCK OR MATERIAL DEEMED UNSUITABLE FOR SUBGRADE, BY ENGINEER, SHALL BE DISPOSED OF OFFSITE AT CONTRACTOR'S EXPENSE.
- IF REQUIRED DUE TO CONSTRUCTION, POWER POLES TO BE BRACED OR RELOCATED AT CONTRACTORS EXPENSE.

BENCH MARK LIST

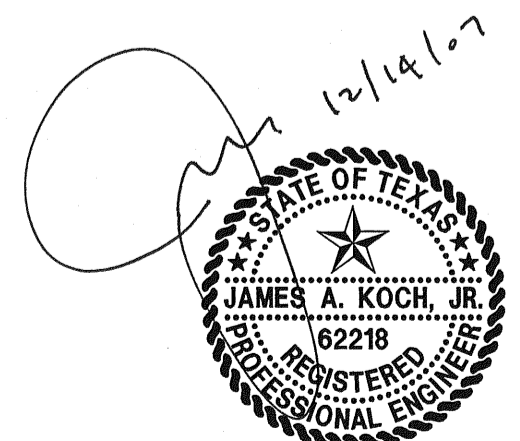
BM# 1 STANDARD CITY OF DALLAS WATER DEPT. BENCHMARK - " " " CUT FOUND ON CENTERLINE OF CURB INLET ON THE NORTHEAST CORNER OF KELLER SPRINGS ROAD AND DALLAS NORTH TOLLWAY. ELEV=615.00

BM# 2 " " " CUT SET ON CENTERLINE OF INLET 174± NORTH OF NORTHEAST PROPERTY CORNER OF SAID PROPERTY. ELEV=607.34



STANDARD GRADING DETAIL AT BUILDING (EAST SIDE)

1 NTS



THE SEAL APPEARING ON THIS DOCUMENT WAS AUTHORIZED BY JAMES A. KOCH, JR. P.E. 62218 ON 12/14/2007. ALTERATION OF A SEALED DOCUMENT WITHOUT PROPER NOTIFICATION TO THE RESPONSIBLE ENGINEER IS AN OFFENSE UNDER THE TEXAS ENGINEERING PRACTICE ACT.

K:\WHITTS\17\DWG\2840-07\156\DWG\2840-07-156CVD.DWG