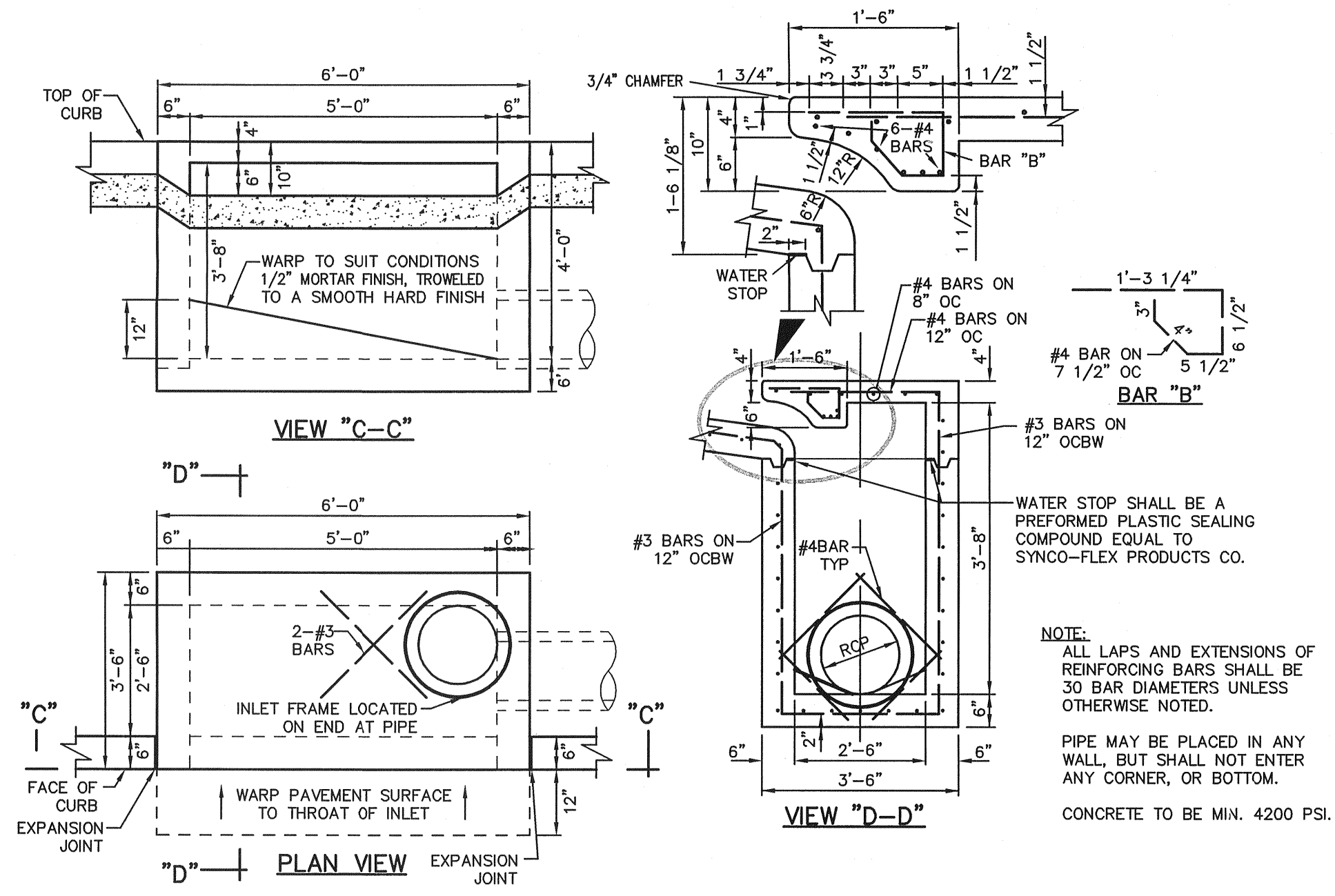
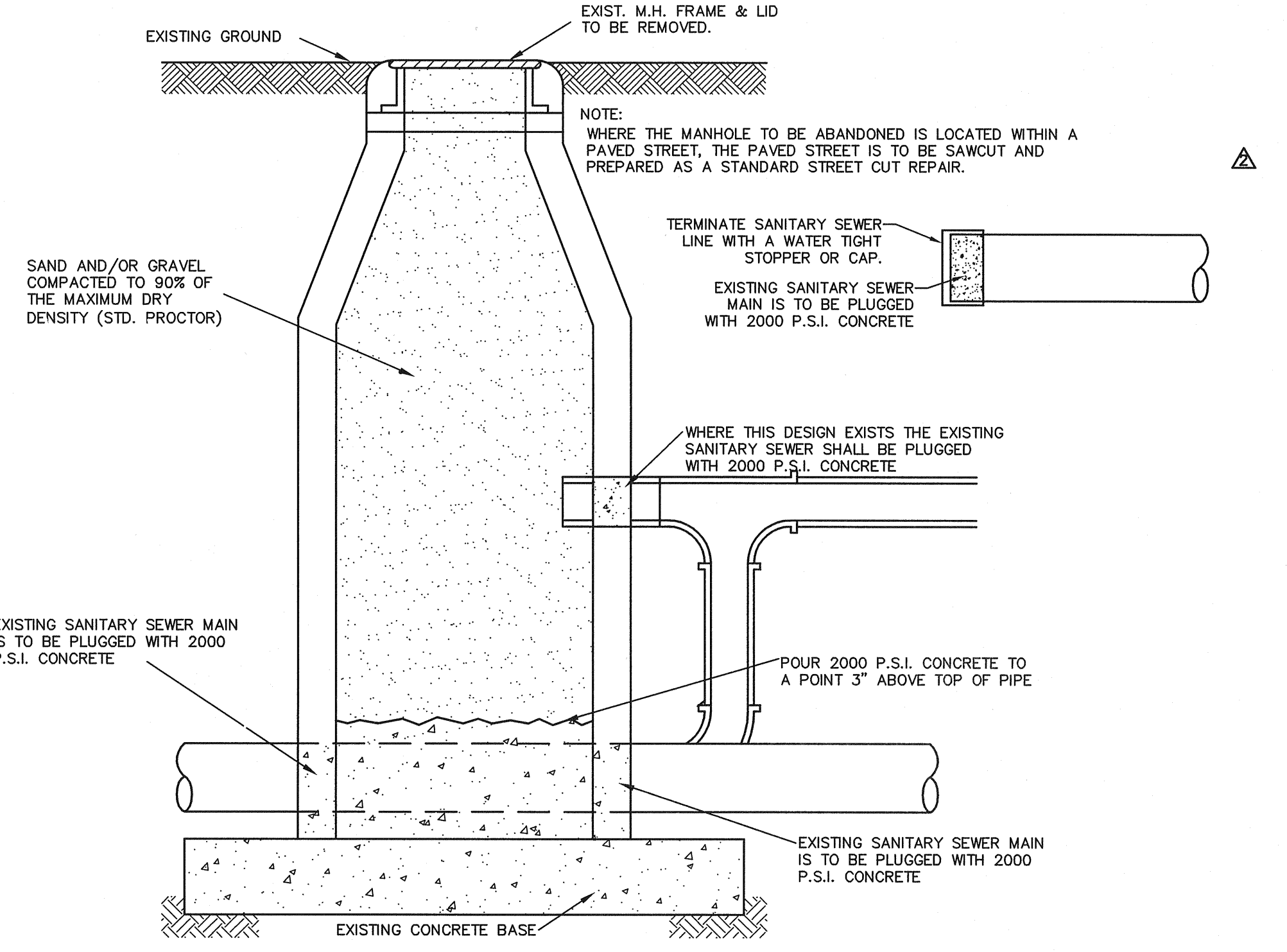
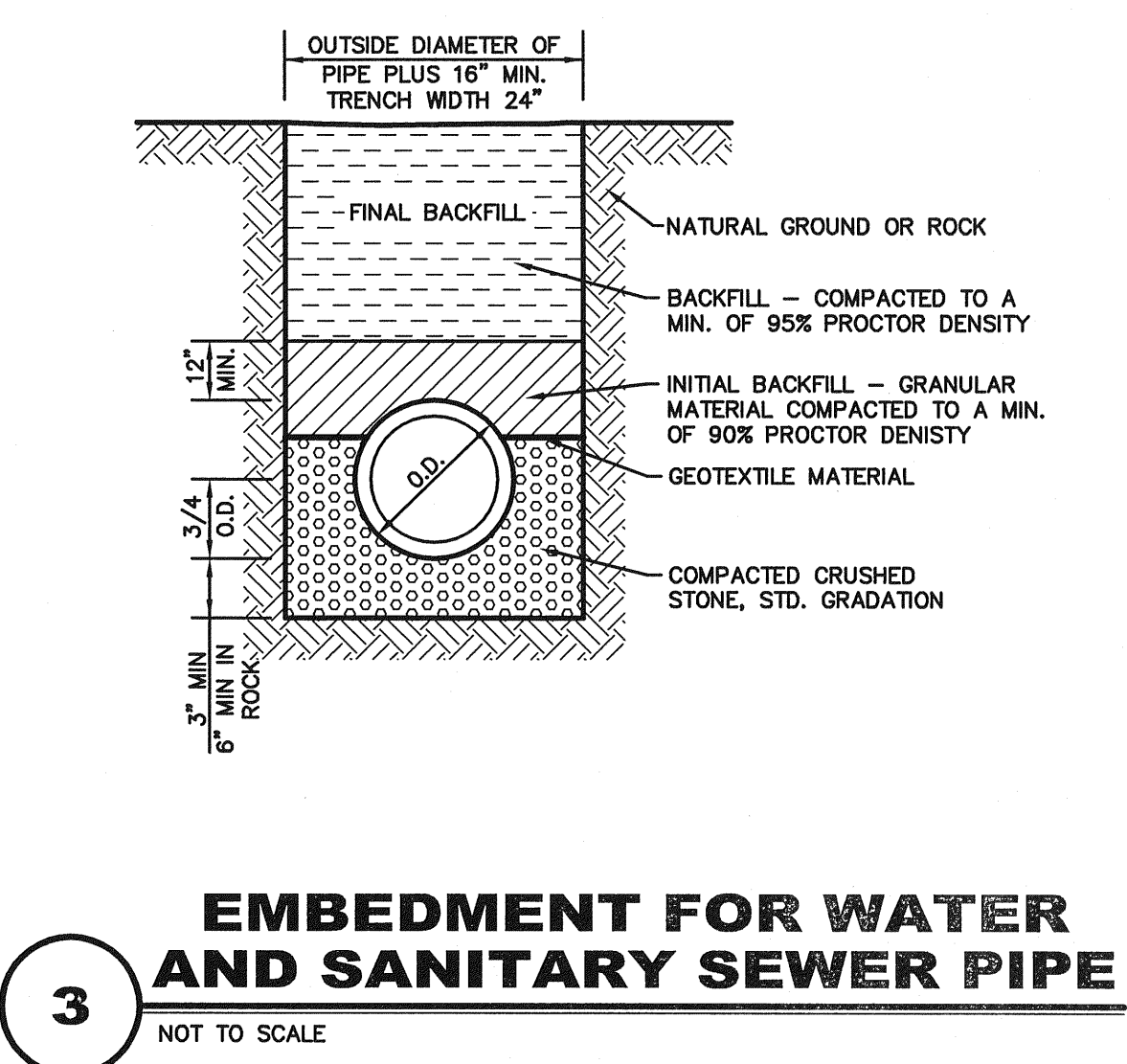


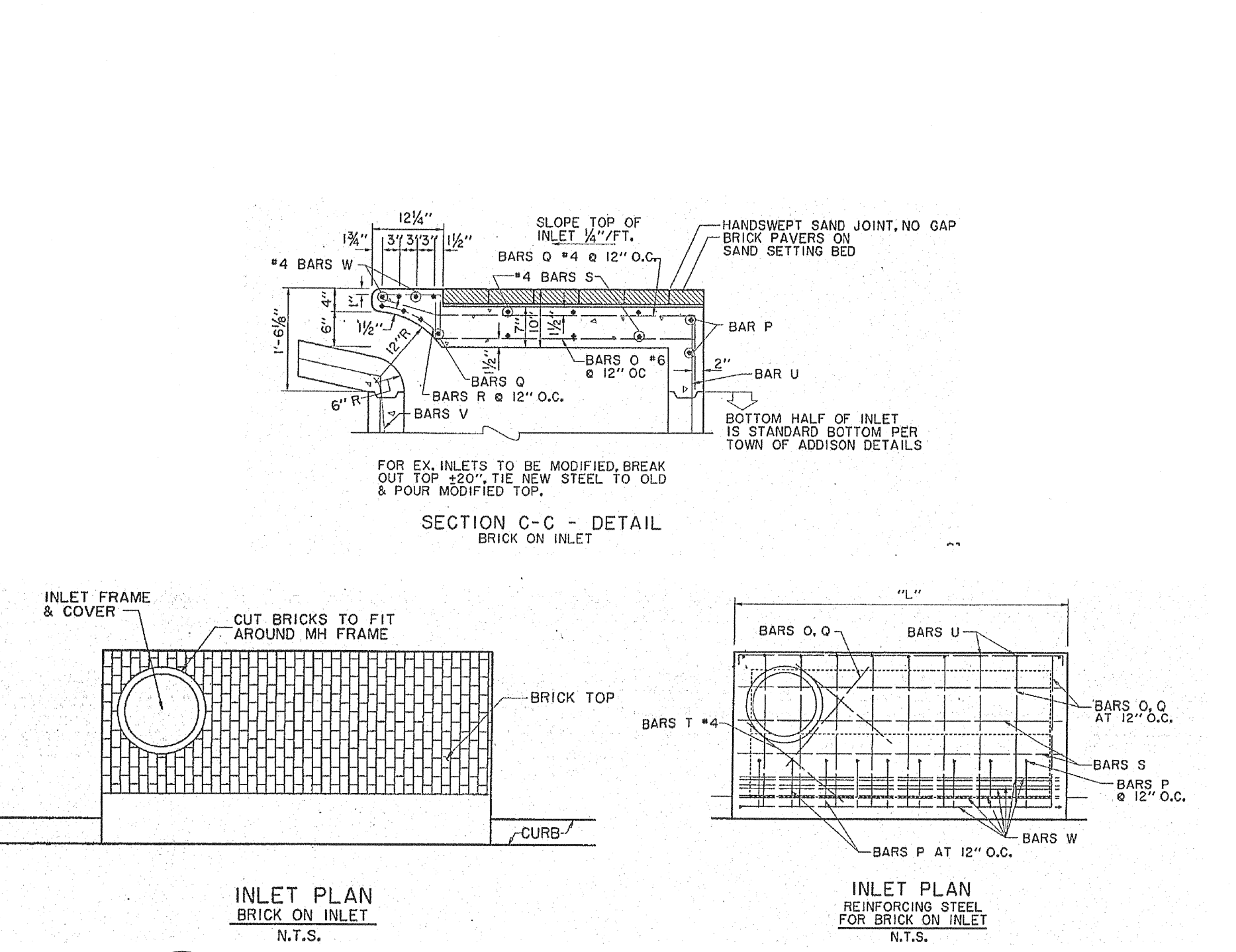
1 SUBSURFACE DRAINAGE SYSTEM
NOT TO SCALE



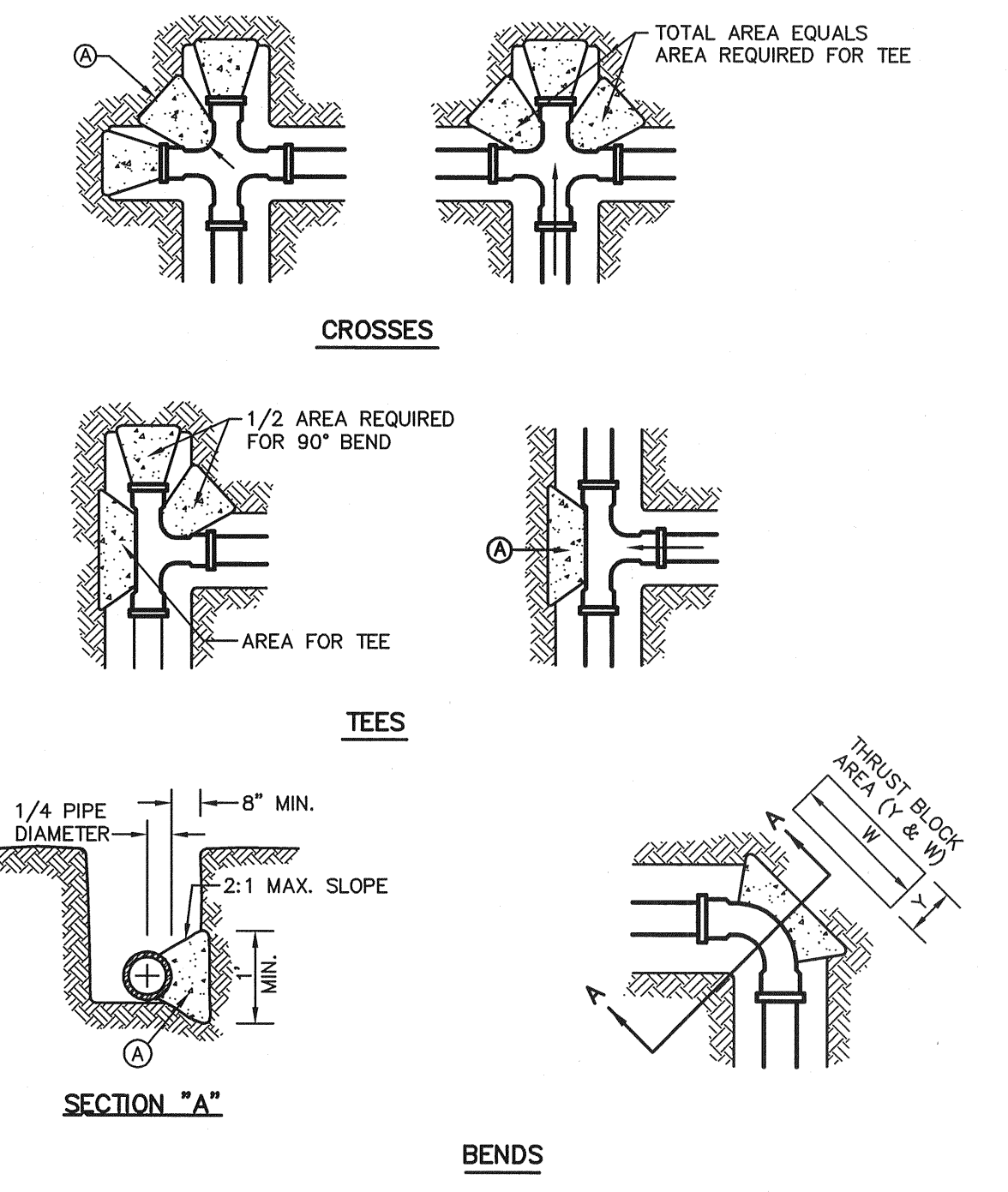
2 CURB INLET DETAIL (PRIVATE)
NOT TO SCALE



6 ABANDONMENT OF EXISTING MANHOLE
NOT TO SCALE



4 MODIFIED INLET DETAIL
NOT TO SCALE



5 THRUST BLOCKING
NOT TO SCALE

GENERAL NOTES:

- TABLE IS BASED ON 2000#/SQ. FT. SOIL. IF CONDITIONS ARE FOUND TO INDICATE SOIL BEARING IS LESS, THE AREAS SHALL BE INCREASED ACCORDINGLY.
- AREAS FOR PIPE LARGER THAN 18" SHALL BE CALCULATED.
- CONCRETE SHALL HAVE A MINIMUM COMPRESSION STRENGTH OF 2500 PSI.
- THRUST BLOCK IS TO EXTEND TO UNDISTURBED SOIL.
- SIZE MAY BE DECREASED FOR LESSER DEGREE BENDS AS DETERMINED BY ENGINEER.
- KEEP CONCRETE CLEAR OF M.J. OR BELL AND SPIGOT JOINTS.
- BLOCK IN A SIMILAR MANNER AT TEES, HYDRANTS, PLUG OR OTHER LOCATIONS AS REQUIRED.
- IF CONCRETE BLOCKS CANNOT BE POURED, THEN USE TIE-RODS OR OTHER APPROVED METHOD TO RESTRAIN THRUST.

CONSTRUCTION KEY NOTES:

- LENGTH "Y" & "W" AS REQUIRED TO OBTAIN BEARING AREA AGAINST UNDISTURBED SOIL.
- ADDITIONAL EXCAVATION IF NECESSARY TO OBTAIN REQUIRED BEARING AREA.
- MINIMUM THRUST BLOCK AREA REQUIREMENTS FOR (Y & W) AS FOLLOWS:

PIPE SIZE	WATER PIPE	
	TEE, DEAD END 90° BEND	22 1/2° BENDS
4" & LESS	3 SQ. FEET	3 SQ. FEET
6"	4 SQ. FEET	3 SQ. FEET
8"	6 SQ. FEET	3 SQ. FEET
10"	9 SQ. FEET	5 SQ. FEET
12"	13 SQ. FEET	7 SQ. FEET
16"	23 SQ. FEET	12 SQ. FEET
18"	29 SQ. FEET	15 SQ. FEET

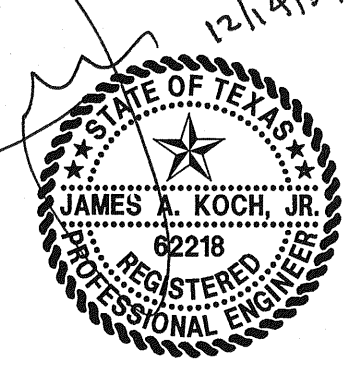
PW# 2007-010

NO.	DATE	REVISION
1	09/28/2009	RECORD DRAWINGS
2	03/18/2009	FIRE HYDRANT/MONUMENT SIGN LOCATION/CITY COMMENT
3	10/27/2008	ELECTRICAL SECONDARY AND WATER VAULT CONFLICT
4	10/22/2008	ONCOR CONSTRUCTION COMMENTS
5	10/16/2008	ONCOR CONSTRUCTION COMMENTS
6	09/18/2008	TOWN OF ADDISON COMMENTS
7	08/08/2008	SITE PLAN UPDATE/ONCOR COMMENTS
8	06/10/2008	GARAGE FINISHED FLOOR ELEV/ELEC DUCT BANK ADDITION
9	03/18/2008	FRANCHISE UTILITY LINE CONFLICT REVISION
10	01/23/2008	UTILITY LINE CONFLICT/CITY COMMENTS REVISION
11	01/08/2008	STORM LINE FLOWLINE REVISIONS

RECORD DRAWING

THIS DRAWING HAS BEEN REVISED TO REFLECT CONSTRUCTION RECORDS MAINTAINED AND PROVIDED BY THE CONTRACTOR FOR THIS PROJECT.

CONTRACTOR: JBI-DAL, LTD.
DATE REVISED: SEPTEMBER 28, 2009



THE SEAL APPEARING ON THIS DOCUMENT WAS AUTHORIZED BY JAMES A. KOCH, JR., P.E. 62218 ON 12/14/2007. ALTERATION OF A SEALED DOCUMENT WITHOUT PROPER NOTIFICATION TO THE RESPONSIBLE ENGINEER IS AN OFFENSE UNDER THE TEXAS ENGINEERING PRACTICE ACT.

Pacheco Koch Consulting Engineers
8350 N. CENTRAL EXPWY. SUITE 1000 TX REG. ENGINEERING FIRM F-469 DALLAS, TX 75208 972.235.3031 TX REG. SURVEYING FIRM LS-100080-00

UTILITY DETAILS
TWO ADDISON CIRCLE
3.371 ACRES
15600 DALLAS PARKWAY
TOWN OF ADDISON, TEXAS

DESIGN	DRAWN	DATE	SCALE	NOTES	FILE	NO.
JAK/KFW	KLH	DEC 2009				C4.5