

VICINITY MAP (NOT TO SCALE)

LEGEND

- Legend items including BOLLARD, ELECTRIC METER, POWER POLE, LIGHT STANDARD, WATER METER, WATER VALVE, IRRIGATION CONTROL VALVE, FIRE HYDRANT, CLEANOUT, MANHOLE, TRAFFIC SIGNAL CONTROL, TRAFFIC SIGNAL POLE, TELEPHONE BOX, FLOOD LIGHT, FLAG POLE, TRAFFIC SIGN, 1/2-INCH IRON ROD W/ "PACHECO KOCH" CAP SET, CONTROLLING MONUMENT, PROPERTY LINE, FENCE, OVERHEAD UTILITY LINE, UNDERGROUND ELECTRIC LINE, UNDERGROUND TELEPHONE LINE, UNDERGROUND CABLE LINE, EXISTING UNDERGROUND WATER LINE, EXISTING UNDERGROUND SANITARY SEWER LINE, PROPOSED UNDERGROUND WATER LINE, PROPOSED UNDERGROUND SANITARY SEWER LINE, SILT FENCE, INLET PROTECTION, STABILIZED CONSTRUCTION ENTRANCE, CURB INLET PROTECTION.

RECORD DRAWING

THIS DRAWING HAS BEEN REVISED TO REFLECT CONSTRUCTION RECORDS MAINTAINED AND PROVIDED BY THE CONTRACTOR FOR THIS PROJECT. CONTRACTOR: IRL-DAL, LTD. DATE REVISED: SEPTEMBER 28, 2009

PW# 2007-010

Table with columns: NO., DATE, REVISION. Contains a list of revisions from 09/28/2009 to 01/08/2008.

Pacheco Koch Consulting Engineers, 8350 N. CENTRAL EXPWY. SUITE 1000, DALLAS, TX 75206

EROSION CONTROL PLAN

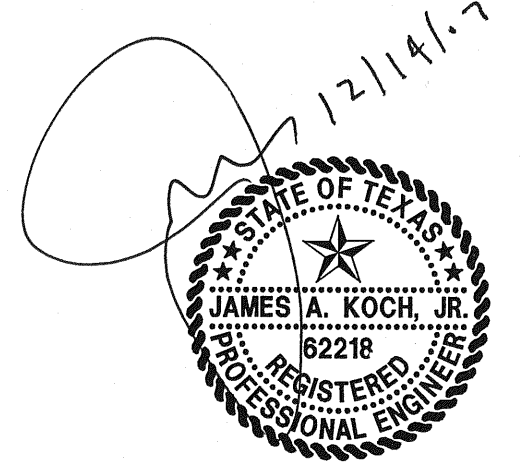
TWO ADDISON CIRCLE

3.371 ACRES

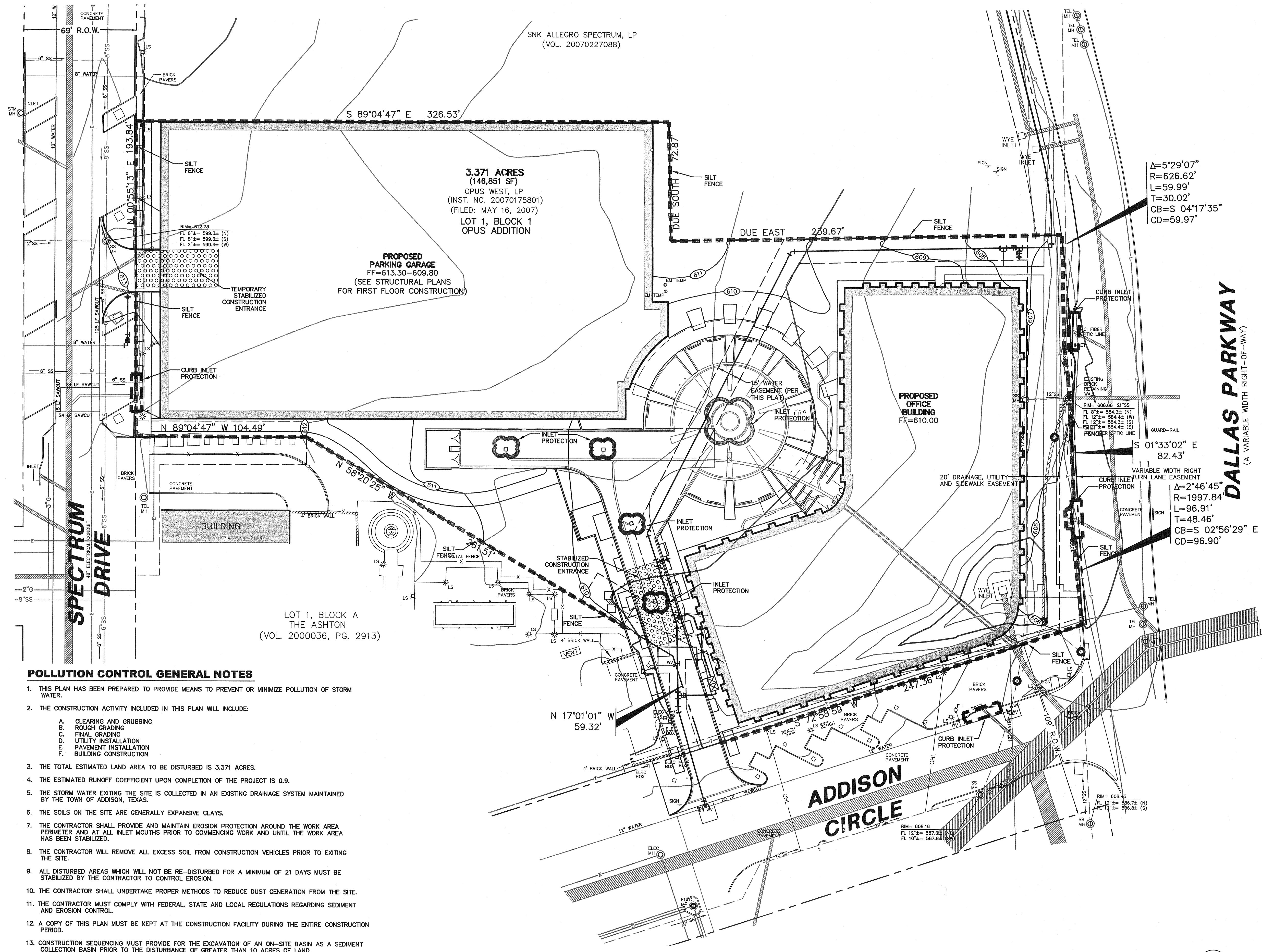
15600 DALLAS PARKWAY

TOWN OF ADDISON, TEXAS

Table with columns: DESIGN, DRAWN, DATE, SCALE, NOTES, FILE, NO. Row: JAK/KFW, KLH, DEC 2009, 1"=30', C6.1



THE SEAL APPEARING ON THIS DOCUMENT WAS AUTHORIZED BY JAMES A. KOCH, JR., P.E. 62218 ON 12/14/2007. ALTERATION OF A SEALED DOCUMENT WITHOUT PROPER NOTIFICATION TO THE RESPONSIBLE ENGINEER IS AN OFFENSE UNDER THE TEXAS ENGINEERING PRACTICE ACT.



3.371 ACRES (146,851 SF) OPUS WEST, LP (INST. NO. 20070175801) (FILED: MAY 16, 2007) LOT 1, BLOCK 1 OPUS ADDITION

PROPOSED PARKING GARAGE FF=613.30-609.80 (SEE STRUCTURAL PLANS FOR FIRST FLOOR CONSTRUCTION)

PROPOSED OFFICE BUILDING FR=610.00

LOT 1, BLOCK A THE ASHTON (VOL. 2000036, PG. 2913)

POLLUTION CONTROL GENERAL NOTES

- 1. THIS PLAN HAS BEEN PREPARED TO PROVIDE MEANS TO PREVENT OR MINIMIZE POLLUTION OF STORM WATER.
2. THE CONSTRUCTION ACTIVITY INCLUDED IN THIS PLAN WILL INCLUDE: A. CLEARING AND GRUBBING, B. ROUGH GRADING, C. FINAL GRADING, D. UTILITY INSTALLATION, E. PAVEMENT INSTALLATION, F. BUILDING CONSTRUCTION.
3. THE TOTAL ESTIMATED LAND AREA TO BE DISTURBED IS 3.371 ACRES.
4. THE ESTIMATED RUNOFF COEFFICIENT UPON COMPLETION OF THE PROJECT IS 0.9.
5. THE STORM WATER EXITING THE SITE IS COLLECTED IN AN EXISTING DRAINAGE SYSTEM MAINTAINED BY THE TOWN OF ADDISON, TEXAS.
6. THE SOILS ON THE SITE ARE GENERALLY EXPANSIVE CLAYS.
7. THE CONTRACTOR SHALL PROVIDE AND MAINTAIN EROSION PROTECTION AROUND THE WORK AREA PERIMETER AND AT ALL INLET MOUTHS PRIOR TO COMMENCING WORK AND UNTIL THE WORK AREA HAS BEEN STABILIZED.
8. THE CONTRACTOR WILL REMOVE ALL EXCESS SOIL FROM CONSTRUCTION VEHICLES PRIOR TO EXITING THE SITE.
9. ALL DISTURBED AREAS WHICH WILL NOT BE RE-DISTURBED FOR A MINIMUM OF 21 DAYS MUST BE STABILIZED BY THE CONTRACTOR TO CONTROL EROSION.
10. THE CONTRACTOR SHALL UNDERTAKE PROPER METHODS TO REDUCE DUST GENERATION FROM THE SITE.
11. THE CONTRACTOR MUST COMPLY WITH FEDERAL, STATE AND LOCAL REGULATIONS REGARDING SEDIMENT AND EROSION CONTROL.
12. A COPY OF THIS PLAN MUST BE KEPT AT THE CONSTRUCTION FACILITY DURING THE ENTIRE CONSTRUCTION PERIOD.
13. CONSTRUCTION SEQUENCING MUST PROVIDE FOR THE EXCAVATION OF AN ON-SITE BASIN AS A SEDIMENT COLLECTION BASIN PRIOR TO THE DISTURBANCE OF GREATER THAN 10 ACRES OF LAND.
14. ALL FINISHED GRADES ARE TO BE HYDROMULCHED, SPOT SODDED OR SEEDED AND WATERED UNTIL GROWTH IS ESTABLISHED ON AND OFF-SITE.
15. A PIT OR WASH OUT BASIN SHALL BE CONSTRUCTED ON-SITE BY THE CONTRACTOR FOR THE "WASH OUT" OF CONCRETE TRUCKS.

- 16. A BERM OR OTHER SPILL PROTECTION MEASURE SHALL BE USED FOR ANY TEMPORARY FUEL STORAGE TANK ON SITE.
17. IF "SUMP" PUMPS ARE USED TO REMOVE WATER FROM EXCAVATED AREAS, FILTER THE DISCHARGE TO REMOVE SEDIMENT AND OTHER POLLUTANTS BEFORE THE WATER LEAVES THE SITE.
18. TO PREVENT DAMAGE TO VEGETATION IN DOWNSTREAM WATER COURSES, LIMIT ANY PROPOSED LIME STABILIZATION OPERATIONS TO THAT WHICH CAN BE MIXED AND COMPACTED BY THE END OF EACH WORK DAY. GEOTEXTILE FABRIC IS NOT EFFECTIVE IN FILTERING LIME SINCE THE GRAIN SIZE IS SMALLER THAN THE OPENING IN THE FABRIC.
19. VEHICLE PARKING AREAS, STAGING AREAS, STOCKPILES, SPOILS, ETC. SHALL BE LOCATED SUCH THAT THEY WILL NOT ADVERSELY AFFECT STORM WATER QUALITY. OTHERWISE, COVERING OR ENCIRCLING THE AREAS WITH PROTECTIVE MEASURES SHALL BE NECESSARY.
20. STORE ALL TRASH AND BUILDING MATERIALS WASTE IN AN ENCLOSURE UNTIL PROPER DISPOSAL AT OFF-SITE FACILITIES.

BENCH MARK LIST

BM# 1 STANDARD CITY OF DALLAS WATER DEPT. BENCHMARK - " " CUT FOUND ON CENTERLINE OF CURB INLET ON THE NORTHEAST CORNER OF KELLER SPRINGS ROAD AND DALLAS NORTH TOLLWAY. ELEV=615.00
BM# 2 " " CUT SET ON CENTERLINE OF INLET 174'± NORTH OF NORTHEAST PROPERTY CORNER OF SAID PROPERTY. ELEV=607.34

12/30/2009 9:43AM M:\DWG-28\2840-07\156\DWG\2840-07-156CV.DWG

TWO ADDISON CIRCLE