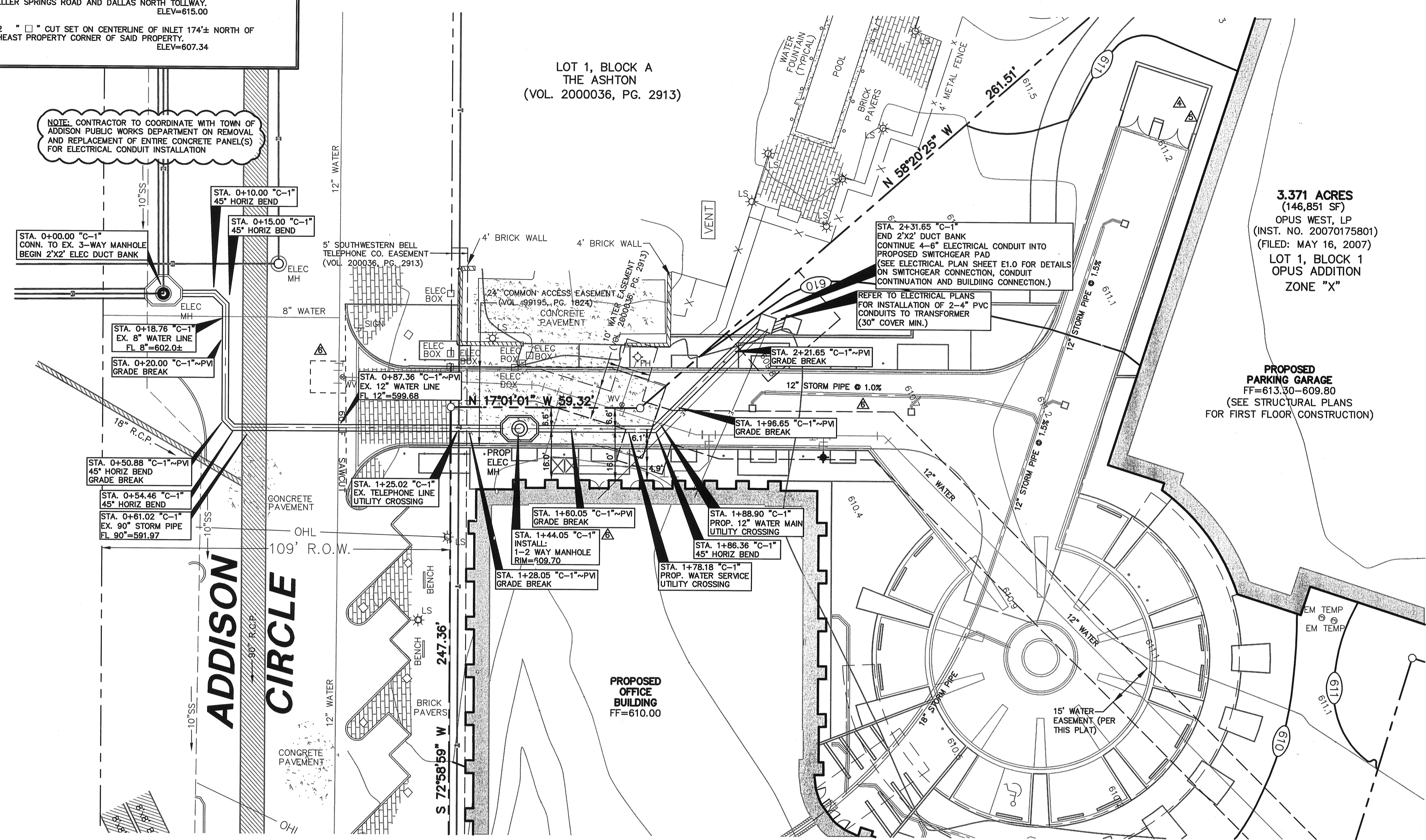


BENCH MARK LIST

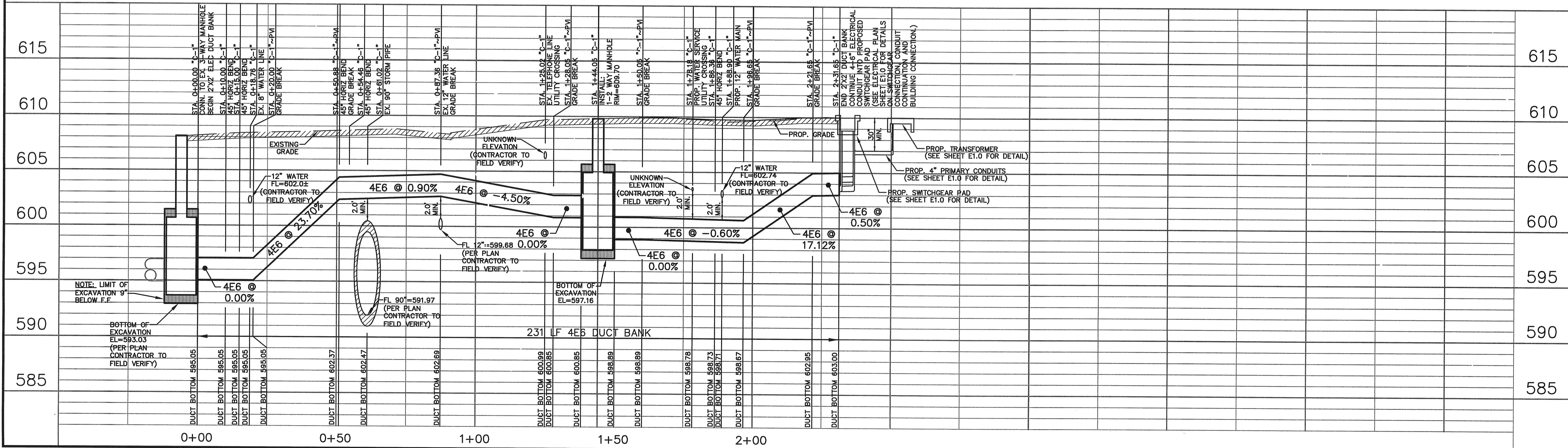
BM# 1 STANDARD CITY OF DALLAS WATER DEPT. BENCHMARK - "□" CUT FOUND ON CENTERLINE OF CURB INLET ON THE NORTHEAST CORNER OF KELLER SPRINGS ROAD AND DALLAS NORTH TOLLWAY. ELEV=615.00

BM# 2 "□" CUT SET ON CENTERLINE OF INLET 174'± NORTH OF NORTHEAST PROPERTY CORNER OF SAID PROPERTY. ELEV=607.34

NOTE: CONTRACTOR TO COORDINATE WITH TOWN OF ADDISON PUBLIC WORKS DEPARTMENT ON REMOVAL AND REPLACEMENT OF ENTIRE CONCRETE PANEL(S) FOR ELECTRICAL CONDUIT INSTALLATION



LINE "C-1" PLAN & PROFILE



GENERAL NOTES

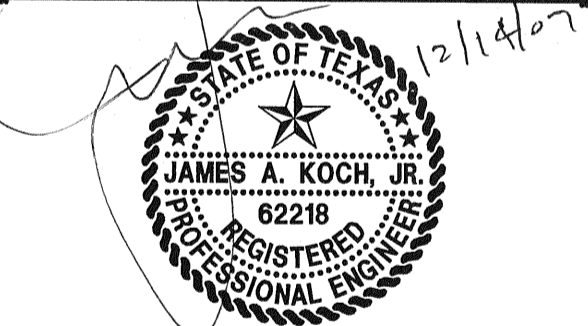
1. THE CONTRACTOR SHALL OBTAIN ALL REQUIRED PERMITS FROM THE TOWN OF ADDISON AND THE STATE OF TEXAS PRIOR TO MOBILIZATION AND CONSTRUCTION.
2. ALL ELECTRIC DUCT BANKS, UNLESS OTHERWISE NOTED, SHALL CONFORM TO THE MMD-5 SPECIFICATIONS ISSUED BY ONCOR AND TOWN OF ADDISON STANDARD CONSTRUCTION SPECIFICATIONS. THE MMD-5 SPECIFICATIONS CAN BE FOUND AT [HTTP://WWW.ONCOR.COM/PDF/CONSTRUCT/GUIDELINES/MMD-5](http://www.oncor.com/PDF/CONSTRUCT/GUIDELINES/MMD-5).
3. THE HORIZONTAL AND VERTICAL LOCATIONS OF EXISTING SUBSURFACE UTILITIES TAKEN FROM PUBLIC RECORDS. THE EXACT LOCATION AND ELEVATION OF ALL PUBLIC UTILITIES MUST BE DETERMINED BY THE CONTRACTOR. IT SHALL BE THE DUTY OF THE CONTRACTOR TO ASCERTAIN WHETHER ANY ADDITIONAL FACILITIES OTHER THAN THOSE SHOWN MAY BE PRESENT.
4. CONTRACTOR SHALL BE RESPONSIBLE FOR MAINTAINING TRENCH SAFETY REQUIREMENTS IN ACCORDANCE TO ADDISON STANDARDS, TEXAS STATE LAW, AND O.S.H.A. STANDARDS FOR ALL EXCAVATION IN EXCESS OF FIVE FEET.
5. IT SHALL BE THE RESPONSIBILITY OF THE CONTRACTOR TO PROTECT ALL PUBLIC UTILITIES IN THE CONSTRUCTION OF THIS PROJECT. ALL MANHOLES, CLEAN-OUTS, VALVE BOXES, FIRE HYDRANTS, ETC. MUST BE ADJUSTED TO PROPER LINE AND GRADE BY THE CONTRACTOR PRIOR TO AND AFTER THE PLACING OF PERMANENT PAVING. UTILITIES MUST BE MAINTAINED TO PROPER LINE AND GRADE DURING CONSTRUCTION OF PAVING FOR THIS PROJECT.
6. IT SHALL BE THE RESPONSIBILITY OF THE CONTRACTOR TO PROVIDE SUPPORT FOR ALL EXPOSED EXISTING UTILITIES, DURING CONSTRUCTION.
7. ALL CONSTRUCTION WORK SHALL BE INSPECTED AND APPROVED BY AN ONCOR FIELD CONSTRUCTION COORDINATOR (FCC). THE FCC SHALL HAVE FULL AUTHORITY TO ADVISE THE CONTRACTOR TO MAKE FIELD MODIFICATIONS WHEN NECESSARY AND REQUIRE THAT THE CONTRACTOR FOLLOW ALL COMPANY MMD-5 SPECIFICATIONS. IN THE EVENT OF UNFORSEEN FIELD CHANGES, CONSTRUCTION MODIFICATIONS WILL BE AT THE CUSTOMER'S EXPENSE.
8. CONTRACTOR TO VERIFY EXISTING UTILITY INFORMATION AND NOTIFY THE DESIGN ENGINEER OF ANY CONFLICTS.

RECORD DRAWING

THIS DRAWING HAS BEEN REVISED TO REFLECT CONSTRUCTION RECORDS MAINTAINED AND PROVIDED BY THE CONTRACTOR FOR THIS PROJECT.

CONTRACTOR: TRI-DAL, LTD.

DATE REVISED: SEPTEMBER 28, 2009



THE SEAL APPEARING ON THIS DOCUMENT WAS AUTHORIZED BY JAMES A. KOCH, JR., P.E. 62218 ON 12/14/2007. ALTERATION OF A SEALED DOCUMENT WITHOUT PROPER NOTIFICATION TO THE RESPONSIBLE ENGINEER IS AN OFFENSE UNDER THE TEXAS ENGINEERING PRACTICE ACT.

PW# 2007-010

NO.	DATE	REVISION
1	09/28/2009	RECORD DRAWINGS
2	03/18/2009	FIRE HYDRANT/MONUMENT SIGN LOCATION/CITY COMMENT
3	10/27/2008	ELECTRICAL SECONDARY AND WATER VAULT CONFLICT
4	10/22/2008	ONCOR CONSTRUCTION COMMENTS
5	10/16/2008	ONCOR CONSTRUCTION COMMENTS
6	09/16/2008	TOWN OF ADDISON COMMENTS
7	08/08/2008	SITE PLAN UPDATE/ONCOR COMMENTS
8	06/10/2008	GARAGE FINISHED FLOOR ELEV/ELEC DUCT BANK ADDITION
9	03/18/2008	FRANCHISE UTILITY LINE CONFLICT REVISION
10	01/23/2008	UTILITY LINE CONFLICT/CITY COMMENTS REVISION
11	01/08/2008	STORM LINE FLOWLINE REVISIONS

Pacheco Koch Consulting Engineers

8350 N. CENTRAL EXPY., SUITE 1000 TX REG. ENGINEERING FIRM F-469
 DALLAS, TX 75206 972.235.3031 TX REG. SURVEYING FIRM LS-100080-00

ONCOR ELECTRIC DELIVERY

DUCT BANK PLAN AND PROFILE

TWO ADDISON CIRCLE

15600 DALLAS PARKWAY

TOWN OF ADDISON, TEXAS

DESIGN	DRAWN	DATE	SCALE	NOTES	FILE	NO.
JAK/KFW	KLH	DEC 2009	H: 1"=20' V: 1"=5'			E-1