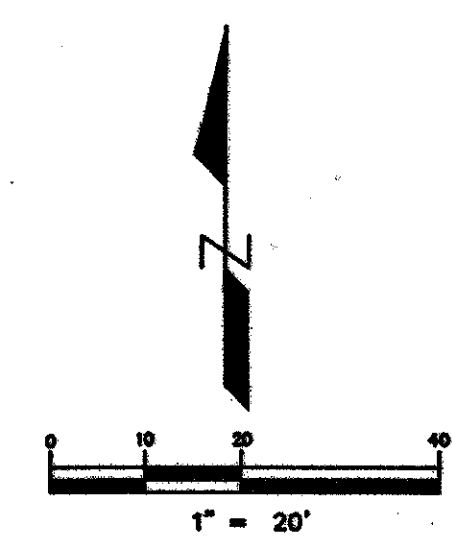
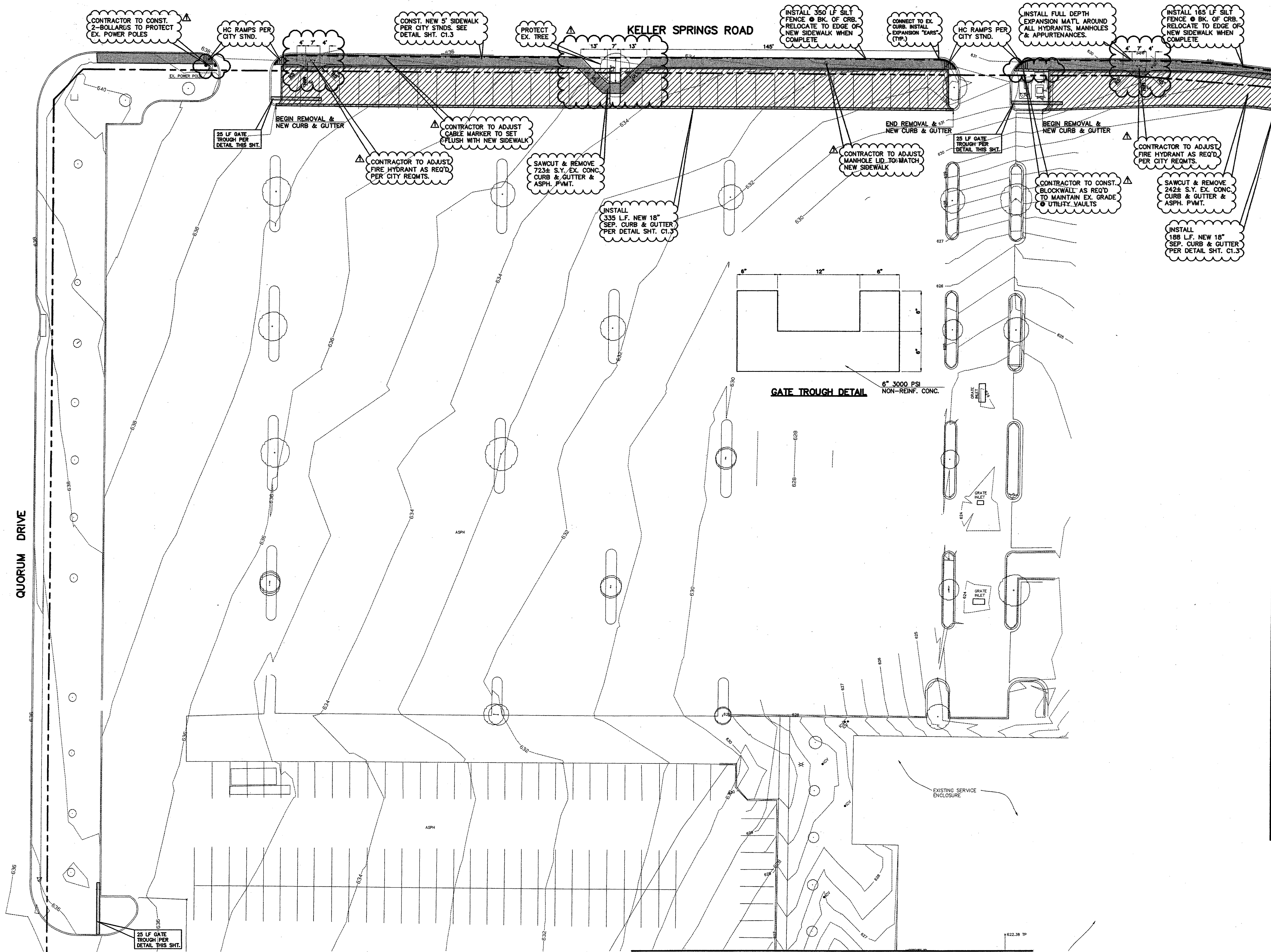


11/12/02 14:59
C:\Land Pro\jects\100-29\dwg\01AREAS.dwg 11/12/2002 02:59:47 PM PM CST



- LEGEND**
- REMOVAL
 - 4" SIDEWALK
 - 6" PAVEMENT
 - BRICK PAVERS
 - CONC. CURB & GUTTER
 - EXIST. CONTOUR
 - PROP. CONTOUR
 - EXIST. SPOT ELEVATION
 - PROP. SPOT ELEVATION
 - TP 20.00
 - SILT FENCE

CORGAN

ISSUES

2.0 ISSUE FOR CONSTRUCTION
9/23/02
3.0 FIRELANE / TOWN COMMENTS
11/12/02

REVISIONS

ADJUSTED SIDEWALKS AROUND TREE & FIRE HYDRANTS. ADDED NOTES TO CONTRACTOR FOR ADJUSTMENT OF UTILITIES AND THE CONSTRUCTION OF THE BLOCKWALL AND THE BOLLARDS AROUND THE POWER POLE
--

RECEIVED
 11/12/02
 WHITE TURNER
 DALLAS OFFICE

THE SEAL APPEARING ON THIS DOCUMENT WAS AUTHORIZED BY THOMAS F. JONES, P.E. 58887, ON 12/03/01

MBNA
 AMERICASM
 HALLMARK CENTER SITE HARDENING

TOMDEN ENGINEERING
 12855 N. CENTRAL #1016
 DALLAS, TEXAS 75243
 (972) 386-6446 FAX: (972) 386-6409
 EMAIL: tomden@aimt.net
 JOB No. 100.29

PLAN AREA 4

JOB 02143.00
 DATE 12 NOV 02
 SHEET

C1.4

BENCHMARK
 BOX CUT ON INLET SE CORNER
 AIRPORT PKWY. & QUORUM
 ELEV. 631.15

MATCH LINE SHEET C1.1

MATCH LINE SHEET C1.3