

BEAM REINFORCING SCHEDULE

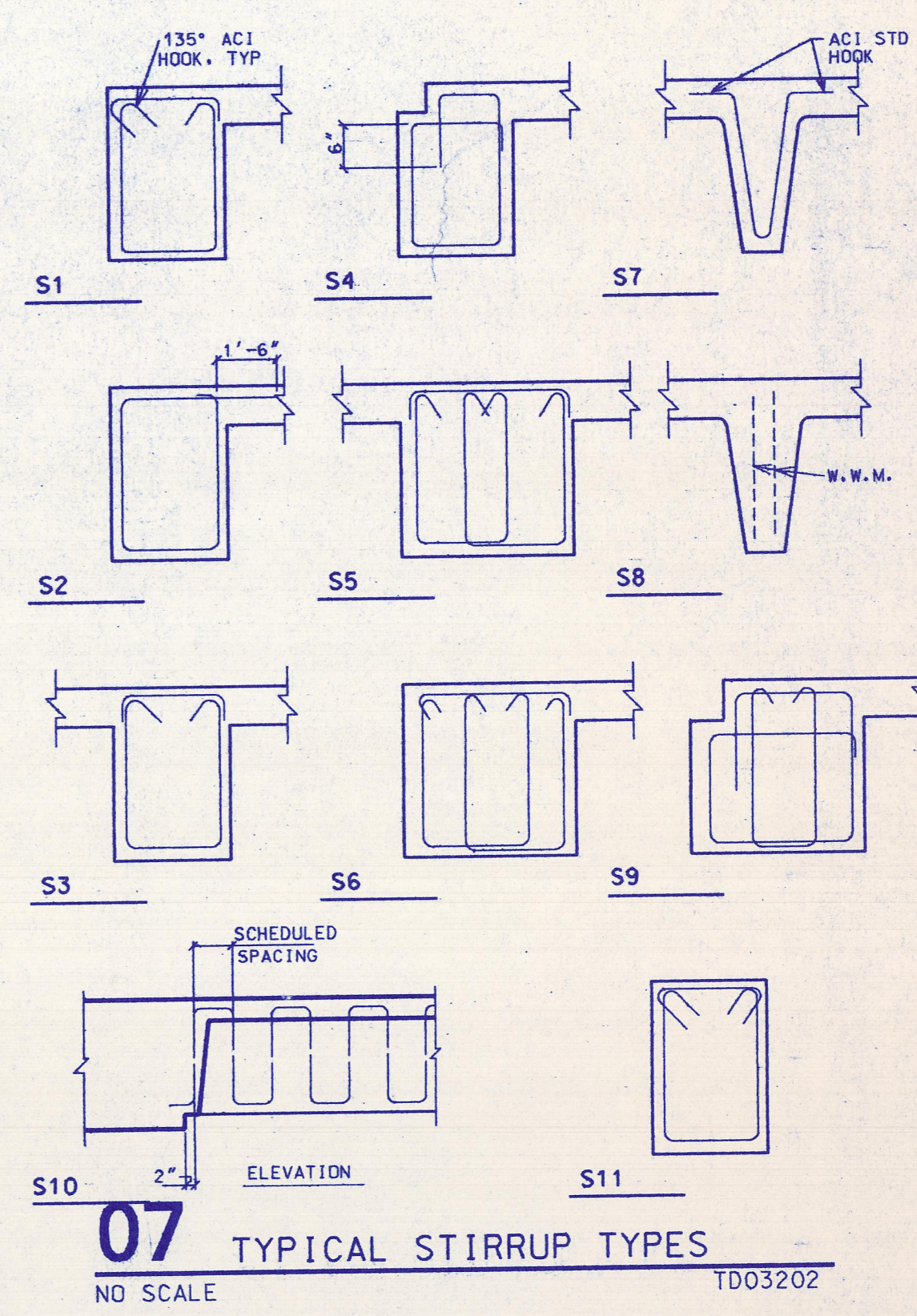
MEMBER	SIZE INCHES	REINFORCING			NOTES	STIRRUPS
		WIDTH	DEPTH	BAR SIZE AND TYPE		
FB1	32.00 24.75	T B	L C	2#7R, 2#8B 1#9L, 3#8H 1#10P, 2#9E, 2#10G	S1	4 17#10
FB2	32.00 24.75	T B	C	3#8H, 1#8M 1#10P, 2#9E, 2#10G	S1	4 12#10
FB3	32.00 24.75	T B	C	1#9L, 3#8H 2#7R, 2#8B	S1	4 17#10
FB4	32.00 24.75	T B	C	3#8H, 1#8M 1#10P, 3#9E, 2#9G	S1	4 12#10
FB5	32.00 24.75	T B	C	2#8L, 2#9H, 1#9N 2#7R, 2#8B	S1	4 17#10
FB6	36.00 24.75	T B	L	4#7B, 2#8C 4#10H, 2#9N 4#10E, 2#9F, 4#10G	S5	4 17#10
FB7	36.00 24.75	T B	C	2#9H, 2#8H, 2#9J 4#10E, 4#10G	S5	4 17#10
FB8	36.00 24.75	T B	C	2#9H, 2#8H, 2#9J 4#11E, 4#11G, 1#9E	S5	4 17#10
FB9	36.00 24.75	T B	C	5#10H, 3#9N 4#7B, 1#7C	S5	4 7#8, 12#10
FB10	36.00 24.75	T B	L	4#7B, 2#8C 4#9H, 2#10N 4#10E, 2#9F, 3#10G	S5	4 17#10
FB11	36.00 24.75	T B	C	4#9H, 1#9K 4#10E, 4#10G	S5	4 17#10
FB12	36.00 24.75	T B	C	4#9H, 1#9K 4#10E, 4#10F, 1#11G	S5	4 17#10
FB13	36.00 24.75	T B	C	4#10H, 3#9N 4#7B, 1#7C	S5	4 17#10
FB14	32.00 24.75	T B	L	4#8A 4#7H 3#9F	S6	4 8#10
FB15	36.00 24.75	T B	L	1#9B 4#9H, 1#10N 2#10E, 2#9E, 4#10G	S5	4 17#10
FB16	36.00 24.75	T B	C	4#9H, 1#9K 5#10E, 5#10G	S5	4 17#10
FB17	36.00 24.75	T B	C	4#10H, 3#9J 5#10E, 5#10G	S5	4 10#6, 11#10
FB18	36.00 24.75	T B	C	4#8H, 2#9J 4#10E, 4#10G	S5	4 17#10
FB19	36.00 24.75	T B	C	5#10H, 2#10N 4#7B, 1#7C	S5	4 17#10
FB20	36.00 24.75	T B	C	4#9H, 1#9K 4#9F	S5	4 17#10
FB21	36.00 24.75	T B	C	4#8H 4#8D, 3#8F	S5	4 12#10
FB22	36.00 24.75	T B	C	4#8H, 1#9K 1#9F	S5	4 14#10
FB23	36.00 24.75	T B	C	2#8H, 2#7H 4#9D, 4#9F	S5	4 7#10
FB24	32.00 24.75	T B	L	2#7R, 2#8B 2#9H, 2#8L, 1#9N 2#9P, 2#10E, 2#10G	S1	4 17#10
FB25	32.00 24.75	T B	C	2#8H, 1#9M, 1#9H 1#10P, 3#9E, 2#10G	S1	4 12#10
FB26	32.00 24.75	T B	C	2#8H, 1#9M, 1#9H 2#10P, 2#10E, 2#11G	S1	4 12#10
FB27	32.00 24.75	T B	C	2#9H, 2#9L, 1#10N 2#8R, 2#8B	S1	4 17#10
FB28	41.00 24.75	T B	L	2#7R, 2#3B 2#7L, 3#7H 1#8P, 4#7E	S6	4 8#10
FB29	41.00 24.75	T B	C	2#7M, 3#7H 1#8P, 4#7E	S6	4 6#10
FB30	41.00 24.75	T B	C	2#7L, 3#7H 2#7R, 3#7B	S6	4 8#10
FB31	15.50 24.75	T B	L	2#7R 1#8L, 1#8H 1#8P, 2#9E	S1	4 12#10
FB32	15.50 24.75	T B	C	1#8L, 1#8H 1#8P, 1#8E	S1	4 12#10
FB33	15.50 24.75	T B	C	1#8L, 1#8H 1#8P, 2#8E	S1	4 12#10
FB34	15.50 24.75	T B	C	1#8L, 1#8H 2#7R	S1	4 12#10
FB35	17.00 24.75	T B	L	3#6B 3#9H 3#6B	S1	4 10#10
FB36	20.00 24.75	T B	L	3#7B 5#10H 3#7B	S1	4 14#10
FB37	30.0/32.0 24.75	T B	L	2#6B, 2#7B 5#9H 2#6B, 2#7B	S3	4 10#10
FB38	12.00 24.75	T B	L	2#6U 2#7H	S1	3 3#10
FB39	15.00 24.75	T B	L	3#5U 3#6H	S1	3 3#10
FB40	18.00 24.75	T B	L	3#5U 3#6H	S1	3 3#10
FB67	41.0/54.0 24.75	T B	L	6#7B 3#9H, 3#10H 6#7B	S5	4 10#10

REINFORCING SCHEDULE NOTES:
GENERAL NOTES (APPLIES TO ALL MEMBERS):
A. "LOC." = BAR LOCATION:
T = TOP
T* = TOP SECONDARY LAYER
B = BOTTOM BAR
B* = BOTTOM SECONDARY LAYER
M = INTERMEDIATE BARS, HALF EACH SIDE EQUALLY SPACED BETWEEN TOP AND BOTTOM REINFORCING
B. "POS." = BAR POSITION:
L = LEFT END OF BEAM
C = CENTER
R = RIGHT END OF BEAM
LEFT AND RIGHT ENDS OF MEMBERS ARE RELATIVE TO ORIENTATION OF MEMBER NUMBER AS READ ON PLAN.
C. STIRRUP SPACING APPLIES TO BOTH ENDS OF BEAM UNLESS NOTED OTHERWISE.
D. PROVIDE STIRRUPS OF SCHEDULED SIZE AND TYPE AT 24 INCHES ON CENTER FOR PORTIONS OF BEAMS WITHOUT SCHEDULED STIRRUPS, AND IN BEAMS WITH NO SCHEDULED STIRRUPS, UNLESS NOTED OTHERWISE.
E. REFER TO GENERAL NOTES AND DETAILS XX/SXXXX & XX/SXXXX FOR CONCRETE COVER REQUIREMENTS AND REINFORCING PLACEMENT DETAILS.
SPECIAL NOTES (APPLIES AS NOTED):

JOIST REINFORCING SCHEDULE

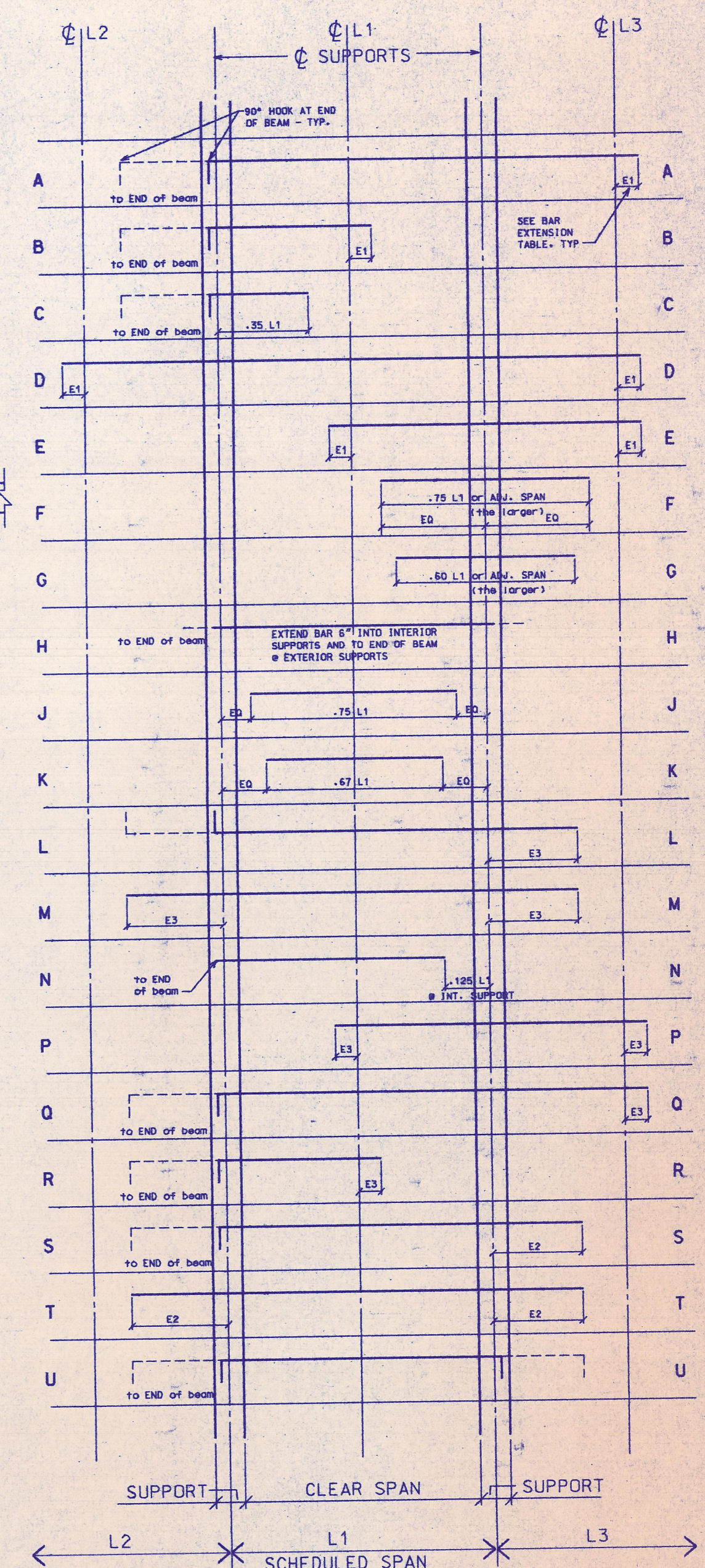
MEMBER	SIZE INCHES	REINFORCING			NOTES	STIRRUPS
		WIDTH	DEPTH	BAR SIZE AND TYPE		
J1	6.00 24.75	T B	L C	2#5B 1#8L, 1#9N 1#9E, 1#10F	S7	3 17#10
J2	6.00 24.75	T B	C	1#10M 1#9F, 1#9G	S7	3 17#10
J3	6.00 24.75	T B	C	1#10M 1#9E, 1#10F	S7	3 17#10
J4	6.00 24.75	T B	C	1#8L, 1#9N 2#5B	S7	3 17#10
J5	6.00 24.75	T B	C	1#8M, 1#8H 1#10E, 1#10F	S7	3 17#10
J6	6.00 24.75	T B	C	1#8M, 1#9J 1#9F, 1#10F	S7	3 17#10
J7	6.00 24.75	T B	C	1#9M, 1#6J 2#9F	S7	3 17#10
J8	6.00 24.75	T B	C	1#10M 1#9F, 1#10F	S7	3 17#10
J9	19.00 24.75	T B	L	1#8B 1#9M, 2#9H	S3	3 14#10
J10	6.00 24.75	T B	L	2#5B 2#10H 2#5B	S7	3 17#10
J11	12.00 24.75	T B	L	2#8B 2#8L 2#8E	S3	3 17#10
J12	12.00 24.75	T B	C	2#7H 2#8E	S3	3 12#10
J13	12.00 24.75	T B	C	2#7H 2#8E	S3	3 12#10
J14	12.00 24.75	T B	C	2#8L 2#8B	S3	3 17#10

REINFORCING SCHEDULE NOTES:
GENERAL NOTES (APPLIES TO ALL MEMBERS):
A. "LOC." = BAR LOCATION:
T = TOP
T* = TOP SECONDARY LAYER
B = BOTTOM BAR
B* = BOTTOM SECONDARY LAYER
M = INTERMEDIATE BARS, HALF EACH SIDE EQUALLY SPACED BETWEEN TOP AND BOTTOM REINFORCING
B. "POS." = BAR POSITION:
L = LEFT END OF BEAM
C = CENTER
R = RIGHT END OF BEAM
LEFT AND RIGHT ENDS OF MEMBERS ARE RELATIVE TO ORIENTATION OF MEMBER NUMBER AS READ ON PLAN.
C. STIRRUP SPACING APPLIES TO BOTH ENDS OF BEAM UNLESS NOTED OTHERWISE.
D. PROVIDE STIRRUPS OF SCHEDULED SIZE AND TYPE AT 24 INCHES ON CENTER FOR PORTIONS OF BEAMS WITHOUT SCHEDULED STIRRUPS, AND IN BEAMS WITH NO SCHEDULED STIRRUPS, UNLESS NOTED OTHERWISE.
E. REFER TO GENERAL NOTES AND DETAILS XX/SXXXX & XX/SXXXX FOR CONCRETE COVER REQUIREMENTS AND REINFORCING PLACEMENT DETAILS.
SPECIAL NOTES (APPLIES AS NOTED):



07 TYPICAL STIRRUP TYPES
NO SCALE T003202

1. SPECIAL INSPECTOR REQD FOR ALL STRUCTURAL ELEMENTS.
2. UPON COMPLETION OF PROJECT THE ENGINEER MUST SUBMIT A LETTER STATING THAT THE BUILDING WAS CONSTRUCTED PER PLAN.

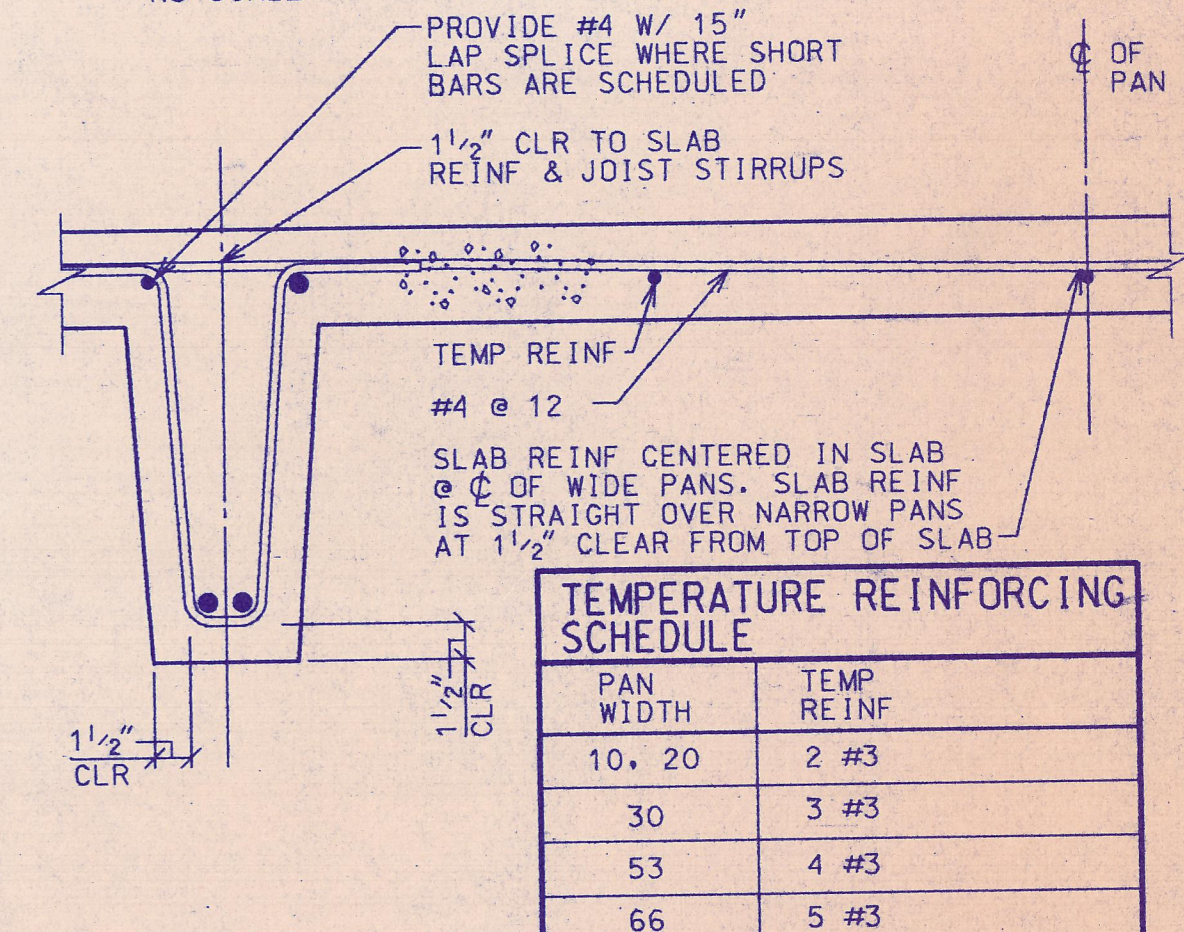


BAR EXTENSION TABLE

TYPE	BAR LOCATION	EXTENSION
E1	TOP & BOT	12D
E2	TOP & BOT	60D
E3	BOT	24D
	TOP	31D

NOTES:
1. D = BAR DIAMETER.
2. BARS WITH MORE THAN 12" OF CONCRETE BELOW ARE TOP BARS.

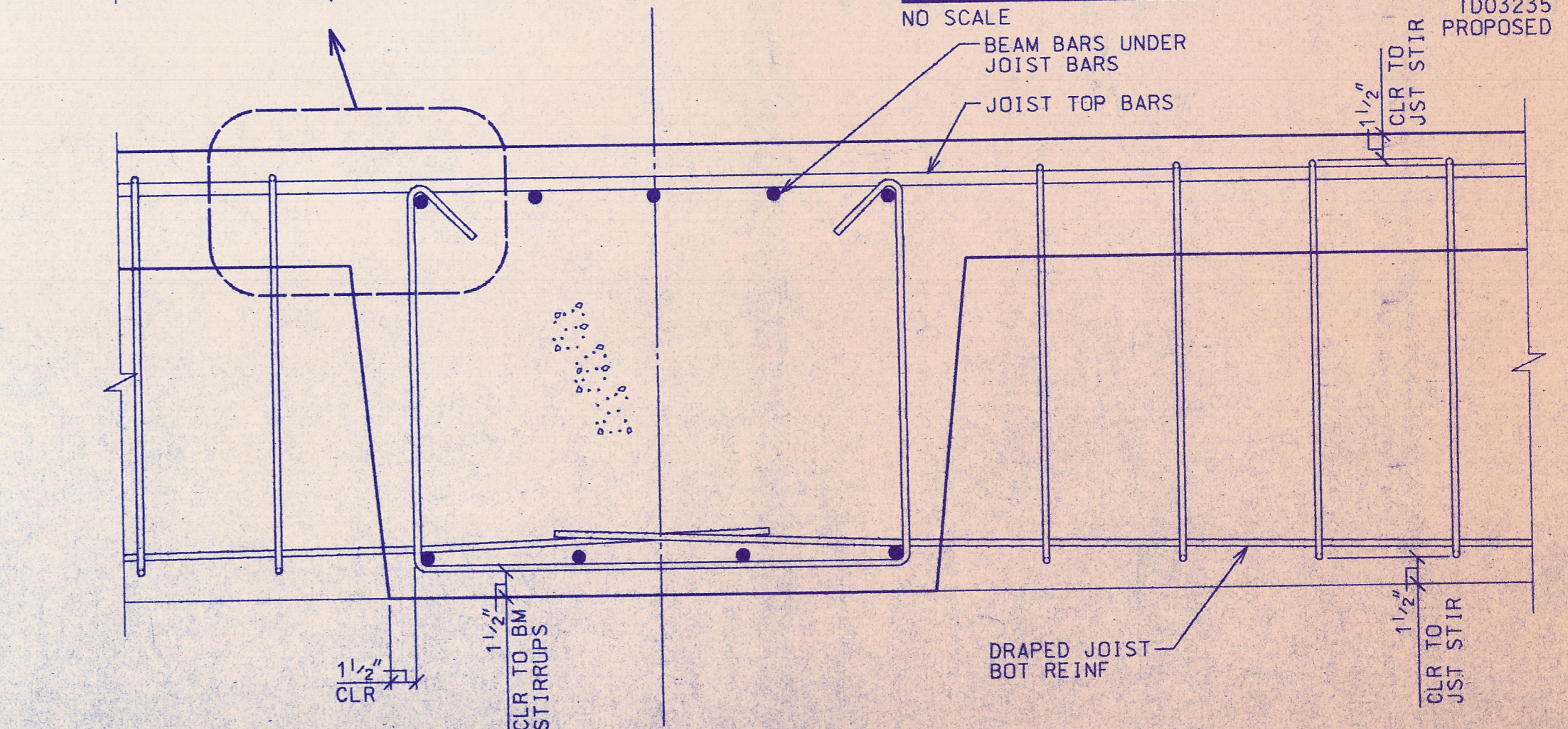
03 CONCRETE REINF BAR TYPES
NO SCALE T003201



TEMPERATURE REINFORCING SCHEDULE

PAN WIDTH	TEMP REINF
10, 20	2 #3
30	3 #3
53	4 #3
66	5 #3

04 TYP PAN SLAB REINFORCING
NO SCALE T003225 PROPOSED



10 BEAM/JOIST REINF PLACEMENT DETAIL
NO SCALE