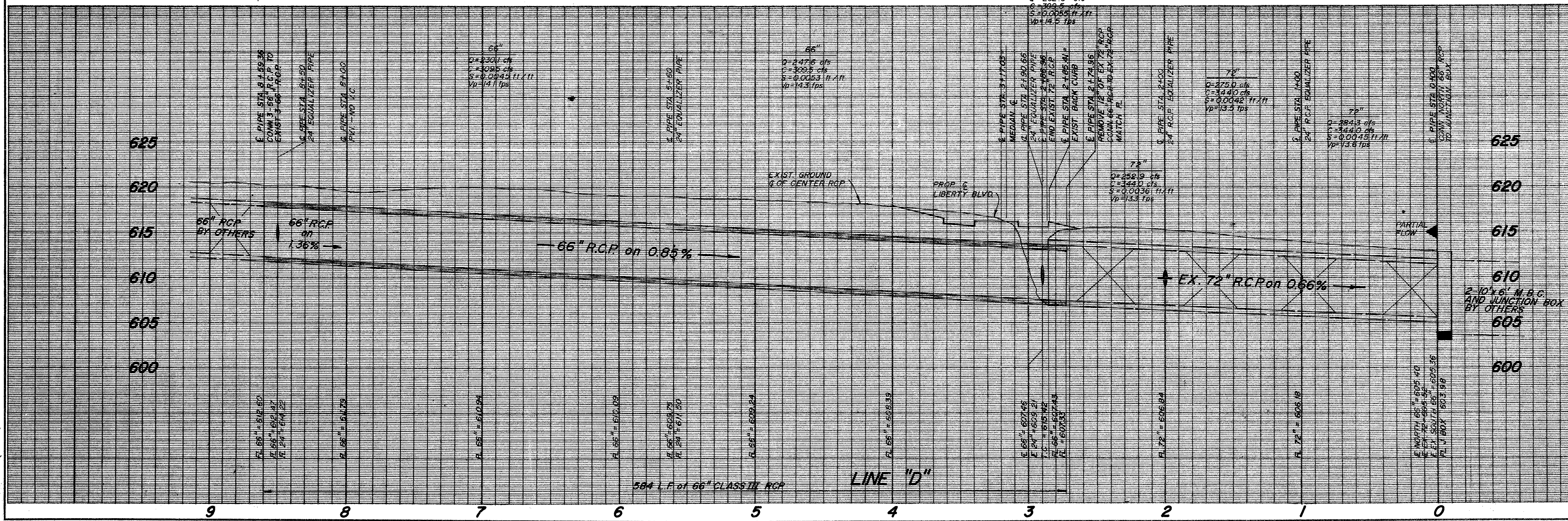


BM No. 1
Square cut on top of curb at the radius return of an island located near the northeast corner of Liberty Plaza I, approximately 639 feet north of the southeast property corner.
Elevation 622.14

BM No. 2
Chisled square on the end of the curb radius located on the driveway on the north side of Keller Springs Road, approximately 500 feet west of Dallas Parkway.
Elevation 626.24



STORM SEWER LINE "D"						
LIBERTY PLAZA						
T.F. STONE COMPANIES, INC.						
JACK R. DAVIS & ASSOCIATES-ENGINEERS						
3535 TRAVIS SUITE 100, DALLAS, TEXAS						
DESIGN	DRAWN	DATE	SCALE	NOTES	FILE	NO.
D.H.	J.A.R.	11/13/84	H-1"=40' V-1"=6'	DR	054146	4 of 14