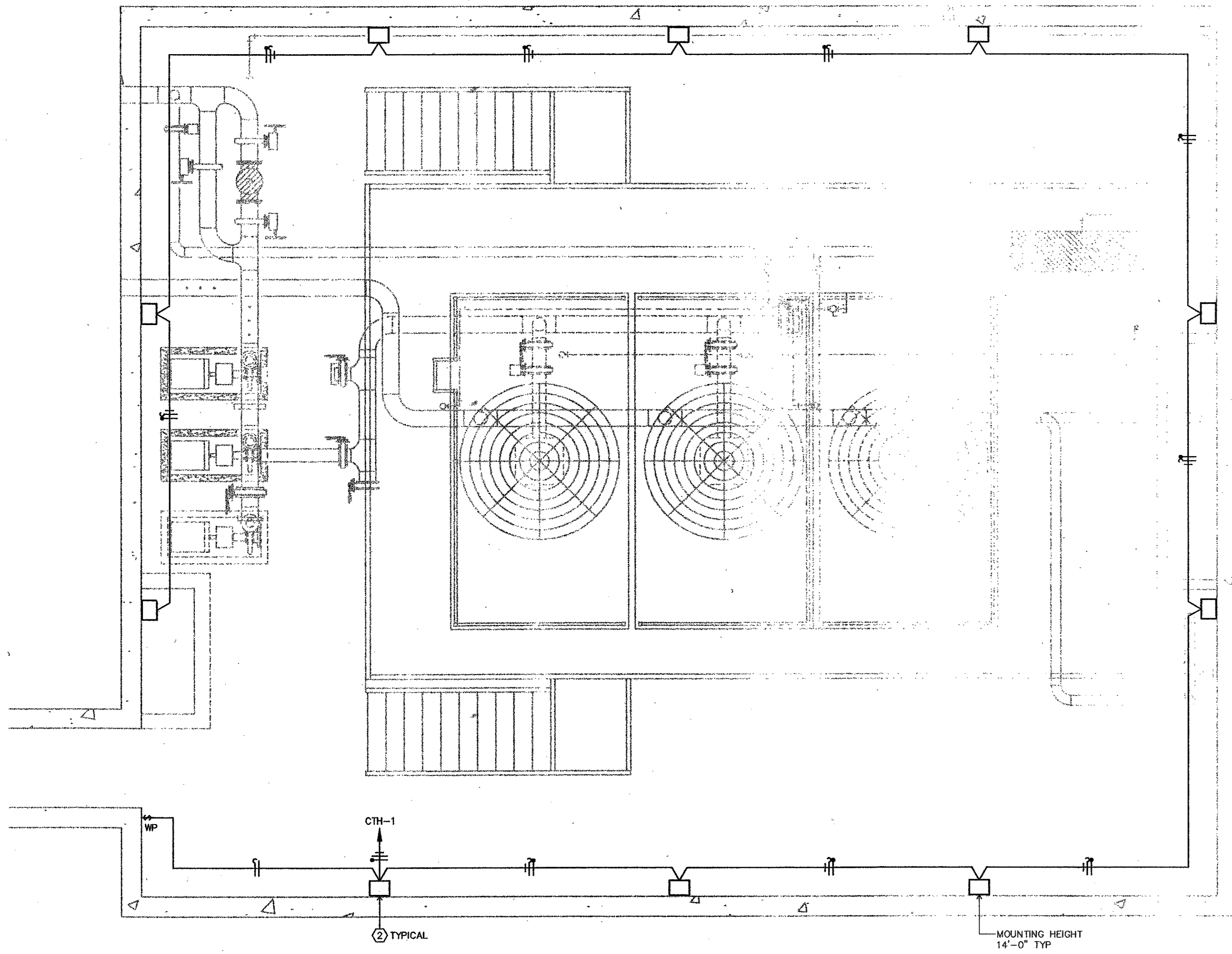


Project Revisions

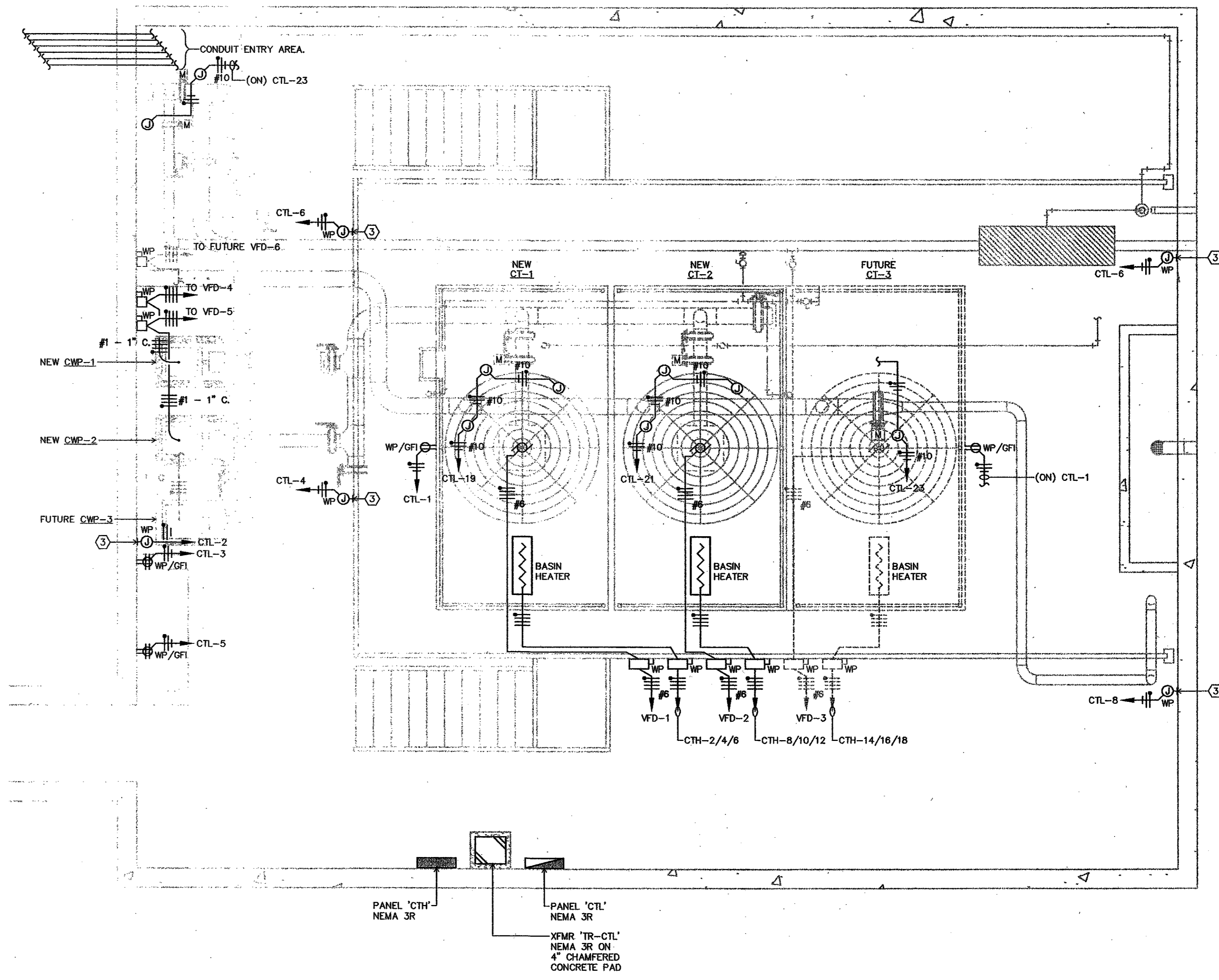
Project Number
 02110

Issue Date
 JULY 23, 2003

Sheet Title
**ENLARGED PLANS
 ELECTRICAL
 PHASE-A**
 Sheet Number
EP3.01



02 ENLARGED PLAN - LIGHTING - PHASE A
 SCALE: 1/4" = 1'-0"



01 ENLARGED PLAN - ELECTRICAL - PHASE A
 SCALE: 1/4" = 1'-0"

GENERAL NOTE(S):

- 1) ALL ELECTRICAL DEVICES THIS AREA TO BE NEMA 4X RATED FOR CORROSIVE ENVIRONMENT. GROUND-BINDS KRYONUM MATERIAL OR APPROVED EQUAL IS ACCEPTABLE.
- 2) ALL RIGID CONDUIT THIS AREA TO BE PVC COATED METAL CONDUIT AS MANUFACTURED BY ROB ROY OR APPROVED EQUAL.

KEYED NOTES BY SYMBOL "O":

- 1) HEAVY-DUTY DISCONNECT SWITCH WITH INTEGRAL AUXILIARY CONTACT, CONTACT TO TURN OFF ASSOCIATED VFD WHEN DISCONNECT SWITCH IS OPENED.
- 2) WEATHERPROOF PULSE-START METAL HALIDE LIGHTING FIXTURE FIXTURE TYPE SPAULDING # MEX-MT00PS MOUNTED 14" ABOVE SLAB. PROVIDE (1) 100W METAL HALIDE LAMP PER FIXTURE PER MANUFACTURERS SPECIFICATIONS.
- 3) J-BOX FOR ELECTRICAL CONNECTION TO HEAT TRACE THIS AREA.