

PUMP SCHEDULE															
MARK	LOCATION	SERVES	PUMP					MOTOR				MFG.	MODEL NO.	REMARKS	
			GPM	HEAD (FT)	EFF. (%)	TYPE	WORKING PRESSURE	SEAL	RPM	BHP	HP				VOLTS
CWP-1	TOWER ENCLOSURE	CT-1	900	125	82.19	CENT.	175 PSI	MECH.	1750	34.75	50	460/3#	BELL & GOSSETT	1510 5G	①②
CWP-2	TOWER ENCLOSURE	CT-2	900	125	82.19	CENT.	175 PSI	MECH.	1750	34.75	50	460/3#	BELL & GOSSETT	1510 5G	①②

① VARIABLE FREQUENCY DRIVE ON PUMPS  
② PROVIDE INVERTER DUTY MOTORS

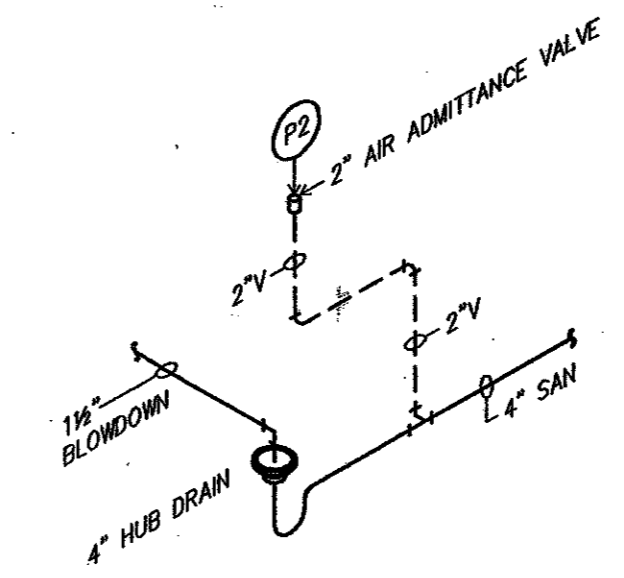
COOLING TOWER SCHEDULE											
MARK	GPM	E.W.T. (°F)	L.W.T. (°F)	WB (°F)	MOTOR		BASIN HEATER		MANUFACTURER	MODEL NO.	REMARKS
					HP	VOLTS/PH	KW	VOLTS/PH			
CT-1	900	95	85	78	15	460/3#	12	460/3#	MARLEY	NCB304	①②③
CT-2	900	95	85	78	15	460/3#	12	460/3#	MARLEY	NCB304	①②③

① VARIABLE FREQUENCY DRIVE ON FANS  
② PROVIDE INVERTER DUTY MOTORS  
③ PROVIDE HARDWARE DAM FOR VARIABLE FLOW PUMPING. 500 GPM MINIMUM FLOW THROUGH EACH TOWER.

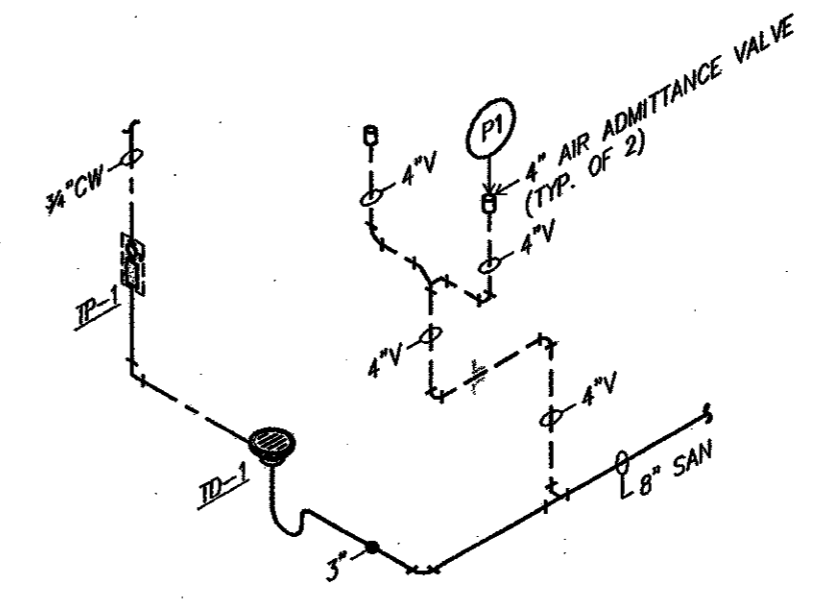
VARIABLE FREQUENCY DRIVE SCHEDULE					
MARK	SERVES	MOTOR		REMARKS	
		HP	VOLTS		
VFD-1	CT-1	15	460/3#	PROVIDE OUTPUT LINE REACTORS AND MANUAL BYPASS	
VFD-2	CT-2	15	460/3#	PROVIDE OUTPUT LINE REACTORS AND MANUAL BYPASS	
VFD-4	CWP-1	50	460/3#	PROVIDE OUTPUT LINE REACTORS AND MANUAL BYPASS	
VFD-5	CWP-2	50	460/3#	PROVIDE OUTPUT LINE REACTORS AND MANUAL BYPASS	

PLUMBING FIXTURE SCHEDULE	
FD-1	J.R. SMITH MODEL 2250 FLOOR DRAIN COMPLETE WITH CAST IRON GRATE SLOTTED SEDIMENT BUCKET.
ID-1	JOSAM MODEL 23510-50 SERIES CAST IRON GARAGE DRAIN WITH ROUND EXTRA HEAVY DUTY GRATE.
TP-1	PRECISION PLUMBING PRODUCTS MODEL SP-500-115V TRAP PRIMER VALVE.

DIRT SEPARATOR FITTING SCHEDULE	
DS-1	10" DIRT SEPARATOR FITTING FOR CONDENSER WATER SYSTEM EQUAL TO SPIROTERM MODEL TH1000FL. FABRICATED STEEL, RATED FOR 150 PSIG DESIGN PRESSURE, SELECTED FOR LESS THAN 2.0 FEET WATER PRESSURE DROP AND A VELOCITY NOT TO EXCEED 10 FEET PER SECOND AT 1800 GPM.



② PLUMBING RISER DIAGRAM  
NOT TO SCALE

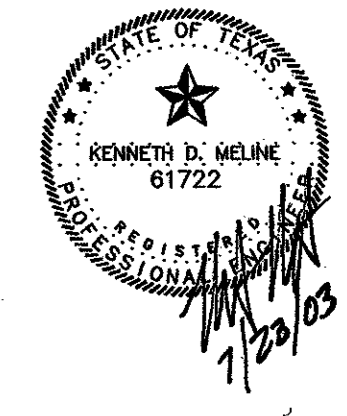


① PLUMBING RISER DIAGRAM  
NOT TO SCALE

SYMBOLS AND ABBREVIATIONS	
SYMBOL / ABBREVIATION	DESCRIPTION
XXXXXX	EXISTING PIPING TO BE REMOVED
---	THIN LINE WEIGHTS REPRESENT EXISTING WORK
---	BOLD LINE WEIGHTS REPRESENT NEW WORK
—○—	PIPE, TURNED UP
—⊖—	PIPE, TURNED DOWN
—○—	CONNECTION, BOTTOM
—○—	CONNECTION, TOP
┌┐	ELBOW
┌┐┌	TEE
—○—	CAP
—○—	STRAINER
— —	UNION
— —	FLANGE
— —	CONCENTRIC REDUCER
— —	ECCENTRIC REDUCER
— —	ANGLE VALVE
— —	BALL VALVE
— —	BUTTERFLY VALVE
— —	CHECK VALVE
— —	GATE VALVE
— —	GLOBE VALVE
— —	PLUG VALVE
— —	PRESSURE RELIEF VALVE
— —	PRESSURE REDUCING VALVE
— —	AUTOMATIC BUTTERFLY VALVE
— —	AUTOMATIC 2-WAY VALVE
— —	AUTOMATIC 3-WAY VALVE
— —	CONNECT NEW TO EXISTING
— —	TRIPLE DUTY VALVE
A.F.F.	ABOVE FINISHED FLOOR
BDD	BACKDRAFT DAMPER
BHP	BRAKE HORSEPOWER
CD	CONDENSATE DRAIN
CFM	CUBIC FEET PER MINUTE
CHR	CHILLED WATER RETURN
CHS	CHILLED WATER SUPPLY
CR	CONDENSER WATER RETURN
CS	CONDENSER WATER SUPPLY
EAT	ENTERING AIR TEMPERATURE
ESP	EXTERNAL STATIC PRESSURE
EWI	ENTERING WATER TEMPERATURE
EXH.	EXHAUST
FD	FLOOR DRAIN
FSD	COMBINATION FIRE SMOKE DAMPER
GPM	GALLONS PER MINUTE
HG	REFRIGERANT HOT GAS
HP	HORSEPOWER
HR	HEATING HOT WATER RETURN
HS	HEATING HOT WATER SUPPLY
KW	KILOWATT
O/A	OUTSIDE AIR
OBD	OPPOSED BLADE DAMPER
OCD	OVERFLOW CONDENSATE DRAIN
PBD	PARALLEL BLADE DAMPER
PSI	POUNDS PER SQUARE INCH
R/A	RETURN AIR
RL	REFRIGERANT LIQUID
RS	REFRIGERANT SUCTION
S/A	SUPPLY AIR
UF	UNDER FLOOR
U.N.O.	UNLESS NOTED OTHERWISE
V.I.F.	VERIFY IN FIELD

Plumbing Notes:  
All plumbing shall conform to the 2000 International Plumbing Code. Field Inspections will prevail in error of plan review.  
Les Folse Chief Plumbing Inspector  
Town of Addison 972-450-2887  
lfolse@ci.addison.tx.us

DFW Consulting Group, Inc.  
8410 Sterling  
Irving, TX 75063  
(972) 929-1199



Mary Kay, Inc.  
Corporate 1  
Addison, Texas  
Cooling Tower Addition

Project Revisions

Project Number  
02110

Issue Date  
JULY 23, 2003

Sheet Title  
SCHEDULES -  
MECH/PLBG

Sheet Number  
MP5.01