

CONTROL VALVE 120 VAC ELECTRICAL CONNECTIONS
 PULL 4-120 VAC CIRCUITS (UP TO 30 AMPS EACH) FROM GENERATOR POWER TO THE FOLLOWING VALVES:
 CIRCUIT 1:
 CT-1 SUPPLY ISOLATION VALVE
 CT-1 RETURN ISOLATION VALVE
 CT-1 BYPASS VALVE
 CIRCUIT 2:
 CT-2 SUPPLY ISOLATION VALVE
 CT-2 RETURN ISOLATION VALVE
 CT-2 BYPASS VALVE
 CIRCUIT 3:
 MV-1 EMERGENCY WATER VALVE
 MV-2 EMERGENCY WATER VALVE
 MV-3 EMERGENCY WATER VALVE
 FILTER BLOW DOWN VALVE
 CIRCUIT 4:
 CDW BUILDING BYPASS VALVE

FIELD VERIFY THE EXACT NUMBER OF CIRCUITS AND NECESSARY AMPERAGE FOR EACH.

DO NOT RUN INPUT AND OUTPUT WIRING IN THE SAME CONDUIT WITH POWER WIRING.

EXISTING NOC PANEL WILL BE REWORKED. SIX ADDITIONAL INPUTS FROM THE BAS WILL BE ADDED FROM THE BAS PANEL TO THE REWORKED NOC PANEL.
 PULL BETWEEN BAS AND NOC 6-22/4C T/S

DPT-1 CONDENSER WATER DIFFERENTIAL PRESSURE AND STATUS PULL TO BAS ENCLOSURE 22/4C T/S

FS-1 CONDENSER WATER FLOW SWITCH PULL TO BAS ENCLOSURE 22/4C T/S

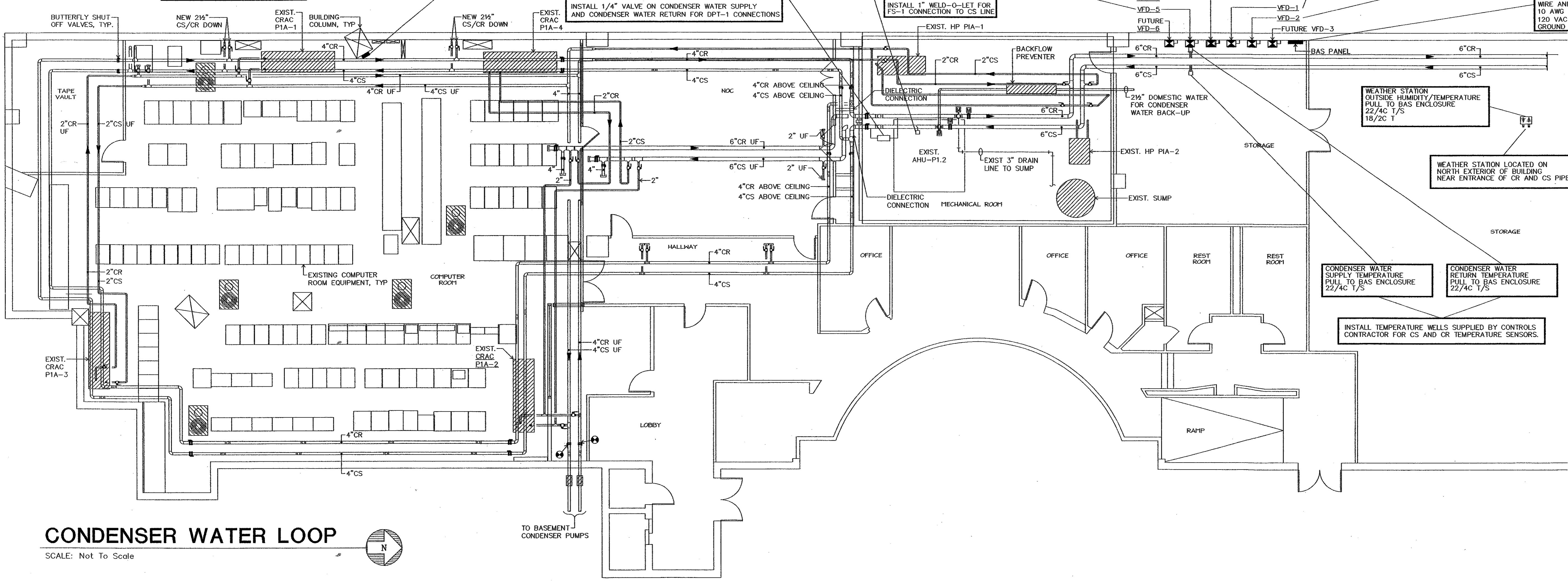
CWP-2 VFD-5 ENABLE/DISABLE VFD SPEED AND STATUS MOTOR AMPS, VFD FAULT AND VFD FEEDBACK PULL FROM VFD TO BAS ENCLOSURE 2-18/4C T AND 5-22/4C T/S

CWP-1 VFD-4 ENABLE/DISABLE VFD SPEED AND STATUS MOTOR AMPS, VFD FAULT AND VFD FEEDBACK PULL FROM VFD TO BAS ENCLOSURE 2-18/4C T AND 5-22/4C T/S

CT-1 VFD-1 ENABLE/DISABLE VFD SPEED AND STATUS MOTOR AMPS, VFD FAULT AND VFD FEEDBACK PULL FROM VFD TO BAS ENCLOSURE 2-18/4C T AND 5-22/4C T/S

CT-2 VFD-2 ENABLE/DISABLE VFD SPEED AND STATUS MOTOR AMPS, VFD FAULT AND VFD FEEDBACK PULL FROM VFD TO BAS ENCLOSURE 2-18/4C T AND 5-22/4C T/S

BAS ENCLOSURE POWER FROM GENERATOR POWER PULL 2-12 AWG THHN STRANDED WIRE AND ONE GREEN INSULATION 10 AWG THHN STRANDED WIRE FOR 120 VAC CIRCUIT W/DEDICATED GROUND



Mary Kay, Inc.
Corporate 1
Addison, Texas
Cooling Tower Addition

Project Revisions

Project Number
02110

Issue Date
23 July 2003

Sheet Title
Temperature Controls
Sheet Number

Handwritten notes and signatures:
 11/01/03
 11/01/03
 11/01/03