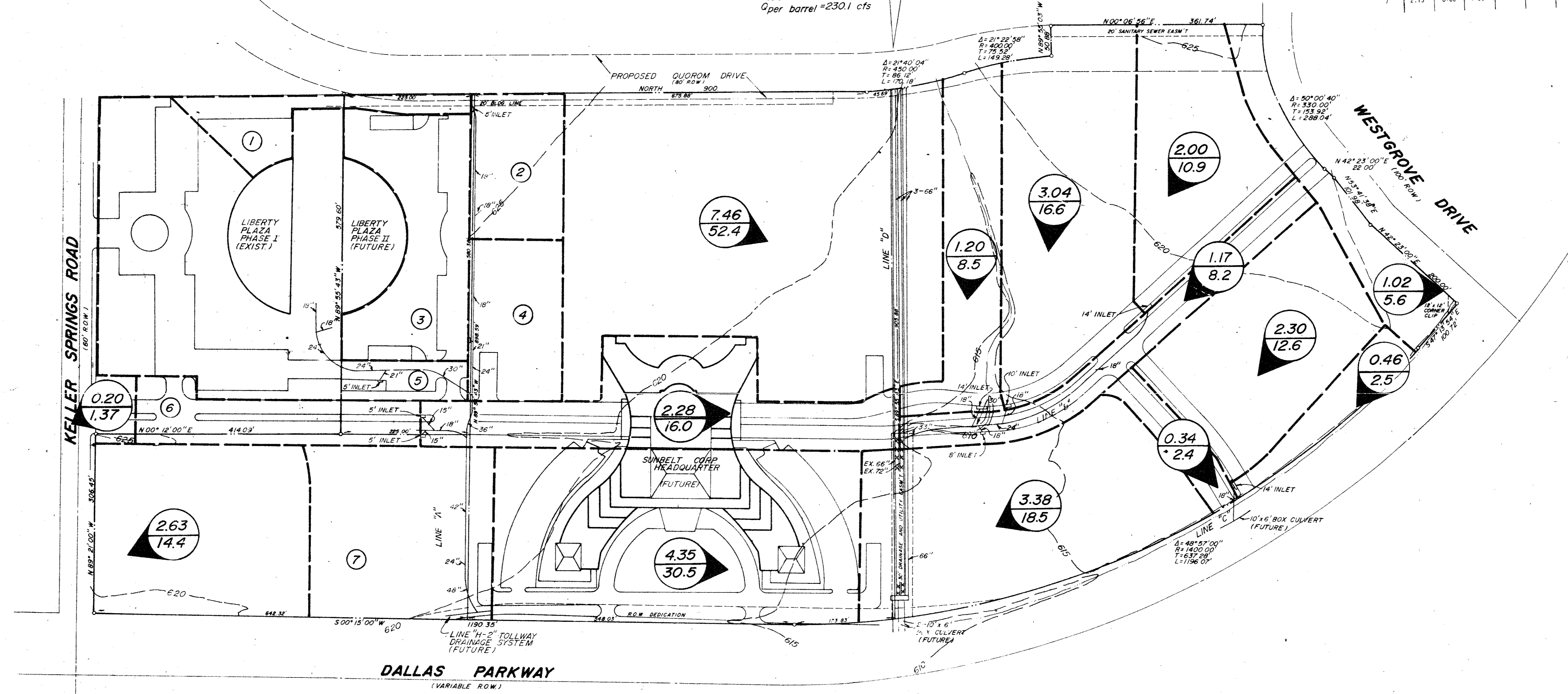


**OFF-SITE DRAINAGE**  
 AREA = 170 Acres  
 TC = 22.7 MIN.  
 I<sub>100</sub> = 5.8 IN./HR.  
 C = 0.7  
 Q = CIA  
 Q<sub>100</sub> = 690.3 cfs  
 Q per barrel = 230.1 cfs

LINE "A"																
D.A. No.	Area (Ac)	From Sta.	To Sta.	C	CA	Inlet Q (cfs)	Acc. CA	Tc (Min)	I <sub>100</sub> (In/HR)	Total Q (cfs)	Length (ft)	Pipe Size	Slope (ft/ft)	V (fps)	V <sub>100</sub> (fps)	Remarks
1	1.01	6+11	8+60	0.9	0.91	7.0	0.91	10.0	7.8	7.0	249	18"	0.47	4.0	0.25	5' Rect. Inlet
2	0.85	4+58	6+11	0.9	0.77	6.0	1.68	11.0	7.7	13.0	153	18"	11.60	7.5	0.07	16" Stub-out
3	1.37	4+55	4+58	0.9	1.23	9.6	2.91	11.3	7.6	22.3	3	24"	0.95	7.2	0.00	5' Rect. Inlet
4	0.79	3+60	4+55	0.9	0.71	5.5	3.62	11.4	7.5	27.3	75	24"	1.40	8.6	1.15	Line "A1"
5	6.74	3+62	3+60	0.9	6.07	47.3	9.69	11.4	7.5	72.8	18	36"	1.10	9.9	1.52	Discharge 36" RCP
5A							9.69	11.5	7.4	71.7	59	36"	1.02	9.5	1.40	Extend 36" Slope Upgrade
6	0.97	1+05	3+03	0.9	0.87	6.8	10.56	11.9	7.3	77.1	198	42"	0.50	7.4	0.65	Two 5' Curb Inlets
7	2.13	0+00	1+05	0.7	1.49	11.6	12.05	12.1	7.2	86.8	105	48"	0.50	8.1	1.02	24" STUB-OUT



**DRAINAGE CRITERIA**

XX AREA, ACRES  
 XX Q, cfs

Q = CIA  
 C = 0.7 or 0.9  
 I = 7.8 IN./HR.

BM No. 1  
 Square cut on top of curb at the radius return of an island located near the northeast corner of Liberty Plaza I, approximately 639 feet north of the southeast property corner. Elevation 622.14

BM No. 2  
 Chisled square on the end of the curb radius located on the driveway on the north side of Keller Springs Road, approximately 500 feet west of Dallas Parkway. Elevation 626.24

NOTE: BOUNDARY INFORMATION IS FROM A BOUNDARY SURVEY BY GEORAM CORP DATED FEBRUARY, 1984

**DRAINAGE AREA MAP**  
**LIBERTY PLAZA**  
 T.F. STONE COMPANIES, INC.  
 JACK R. DAVIS & ASSOCIATES-ENGINEERS  
 3535 TRAVIS SUITE 100, DALLAS, TEXAS

DESIGN	DRAWN	DATE	SCALE	NOTES	FILE	NO
JRD	JRD	11/15/84	1"=100'	JRD	GBR16T	1 of 16

*Handwritten signature and date 12/1/84*