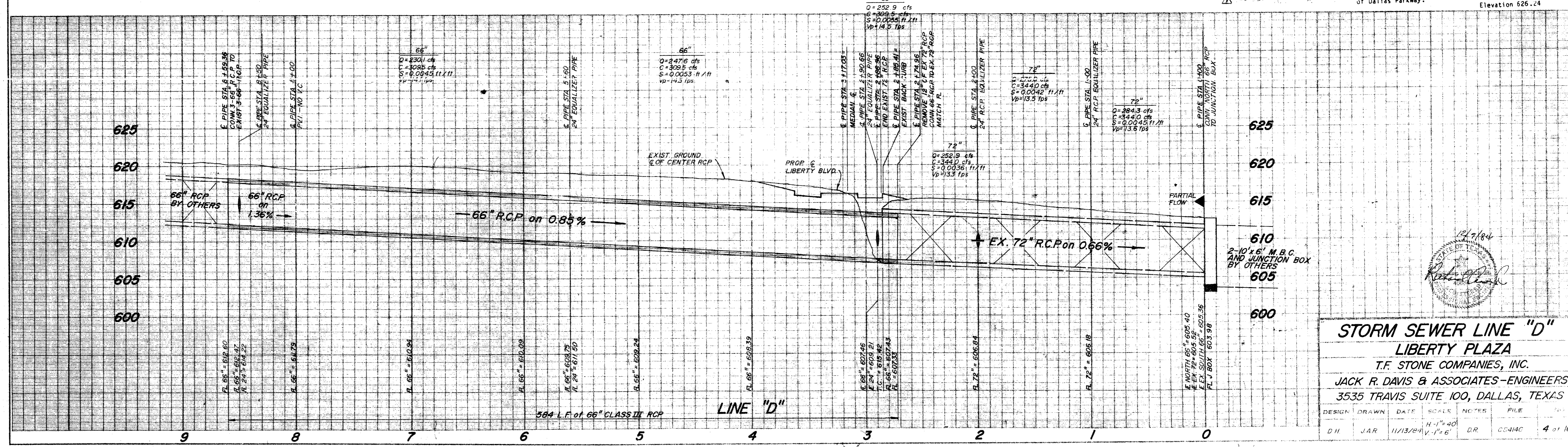


BM No. 1
Square cut on top of curb at the radius return
of an island located near the northeast corner of
Liberty Plaza 1, approximately 639 feet north of
the southeast property corner. Elevation 622.14

BM No. 2
Chisled square on the end of the curb radius
located on the driveway on the north side of
Keller Springs Road, approximately 500 feet west
of Dallas Parkway. Elevation 626.24



STORM SEWER LINE "D"
LIBERTY PLAZA
 T.F. STONE COMPANIES, INC.
 JACK R. DAVIS & ASSOCIATES-ENGINEERS
 3535 TRAVIS SUITE 100, DALLAS, TEXAS

DESIGN	DRAWN	DATE	SCALE	NOTES	FILE
DH	JAR	11/13/94	H-1"=40' V-1"=6'	DR	CC414C 4 of 11