

01 SITE PLAN

PHASE 1
 APPROX. 5.50 ACRES
 8 STORY OFFICE BUILDING
 3 LEVEL OPEN PARKING GARAGE

- GENERAL NOTES:
1. ALL PHASES OF THE PROJECT SITE FROM THE PHASE 1 SITE DEVELOPMENT AREAS SHOULD NOT BE CONSIDERED TO BE A PART OF THE PHASE 1 DEVELOPMENT UNLESS SPECIFICALLY NOTED ON THE PHASE 1 SITE PLAN OR IN THE CONTRACT.
 2. ALL PHASES OF THE PROJECT SITE FROM THE PHASE 1 SITE DEVELOPMENT AREAS SHOULD NOT BE CONSIDERED TO BE A PART OF THE PHASE 1 DEVELOPMENT UNLESS SPECIFICALLY NOTED ON THE PHASE 1 SITE PLAN OR IN THE CONTRACT.
 3. ARCHITECTURAL, SITE PLAN IS ILLUSTRATIVE IN NATURE. REF. CIVIL DRAWINGS FOR DIMENSIONAL CONTROL INFORMATION.

22'-0" PARKING STRIPBACK
 4'-0" WIDE
 DEDICATED R.O.W.

10/14/97

SITE PLAN

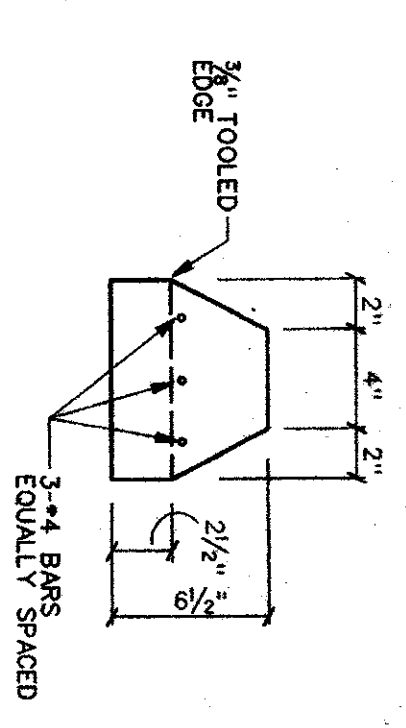
INTEREST COMPANIES
 DEVELOPER
 WILCOX DEVELOPMENT
 SERVICES, INC.
 PROJECT MANAGER

ONE HANOVER PARK
 OFFICE BUILDING
 ADDISON, TEXAS



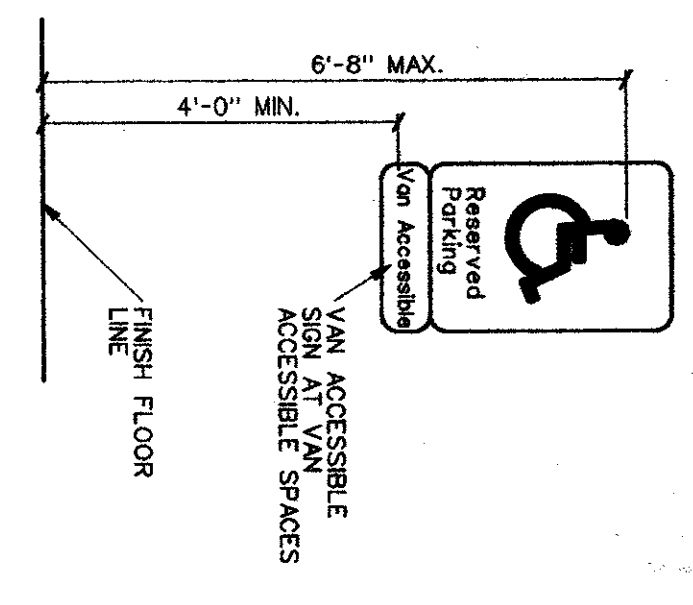
OMNIPLAN
 OFFICE CENTER EAST • DALLAS, TX 75204
 COPYRIGHT © ALL RIGHTS RESERVED • 1997

1.0

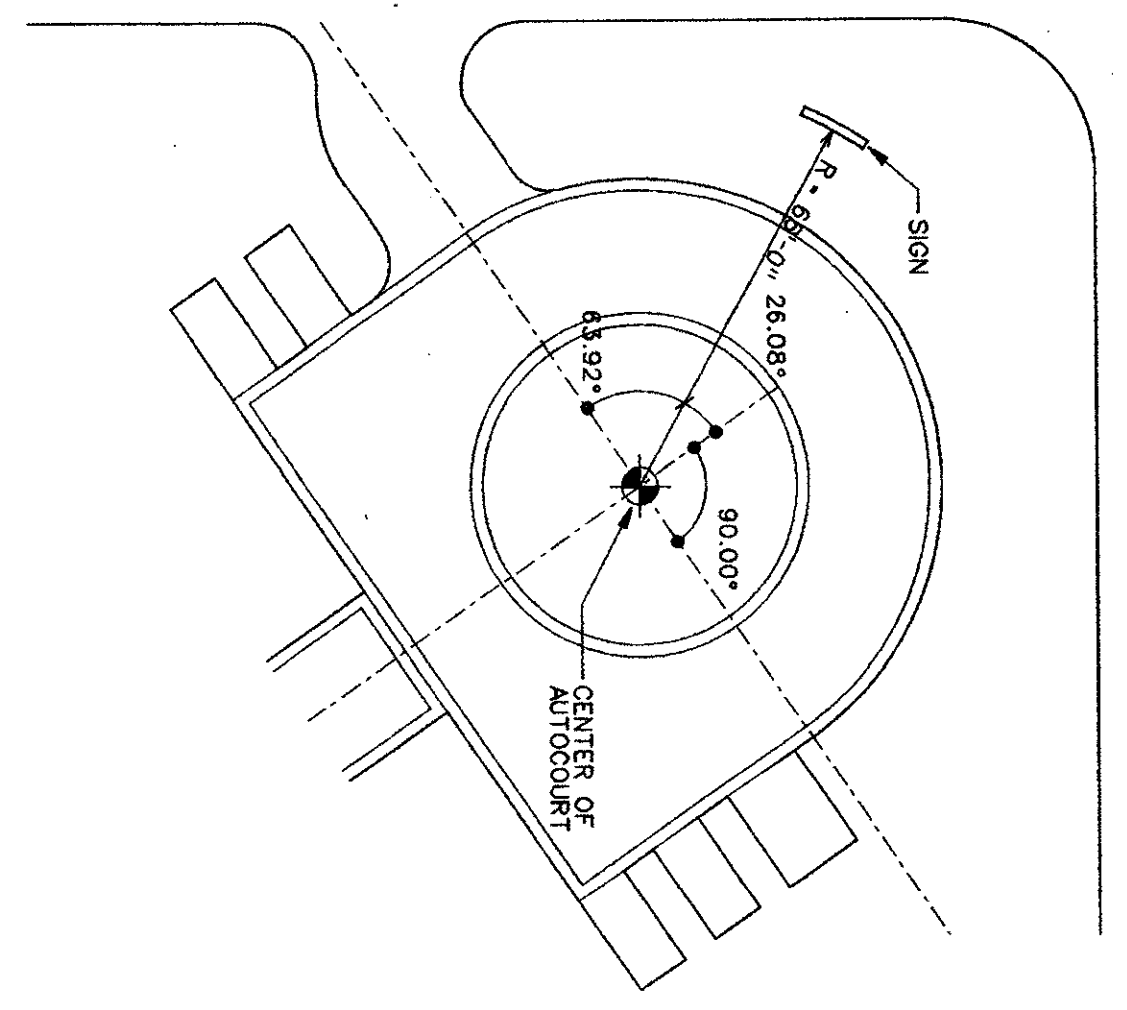


NOTES: 1. PRECAST CONCRETE SHALL BE NORMAL WEIGHT WITH MIN. 28-DAY COMPRESSIVE STRENGTH OF 4000 PSI
2. APPROVED STANDARD MANUFACTURED WHEEL STOP MAY BE USED

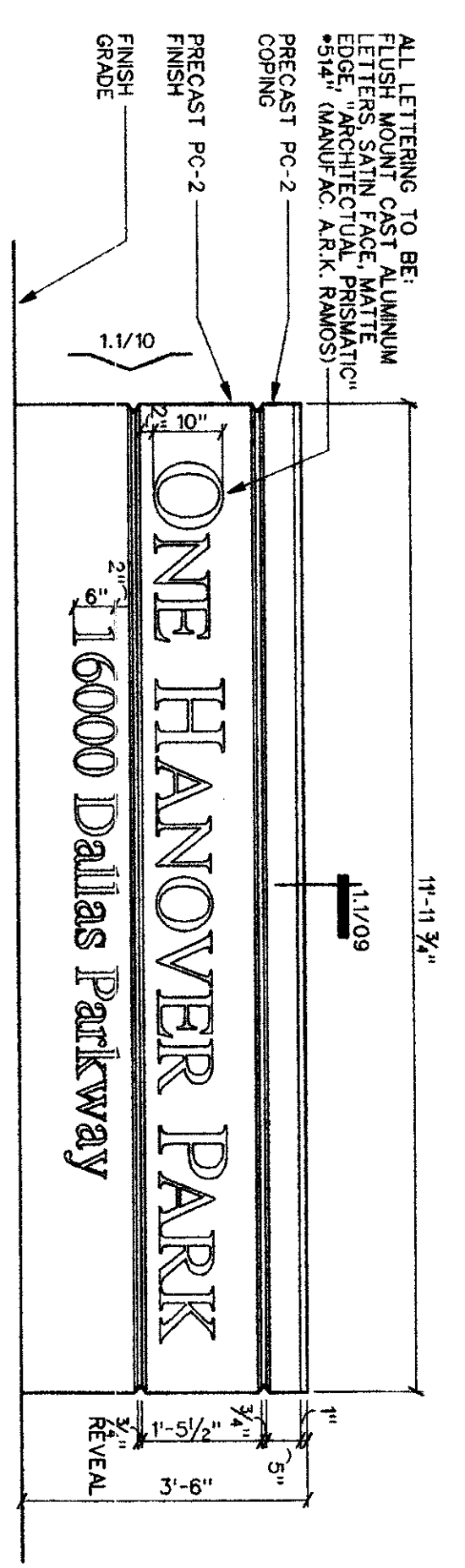
08 PRECAST CONCRETE WHEELSTOP SECTION
SCALE: 1/2" = 1'-0"



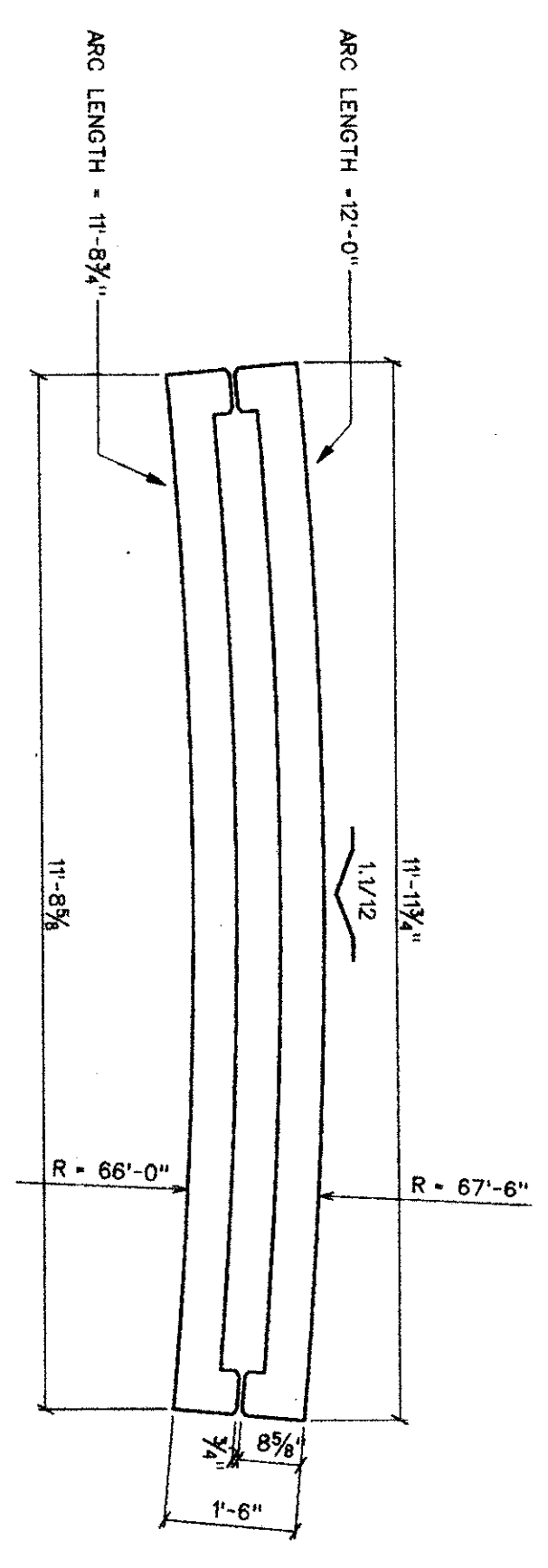
05 HANDICAP SIGNAGE
NO SCALE



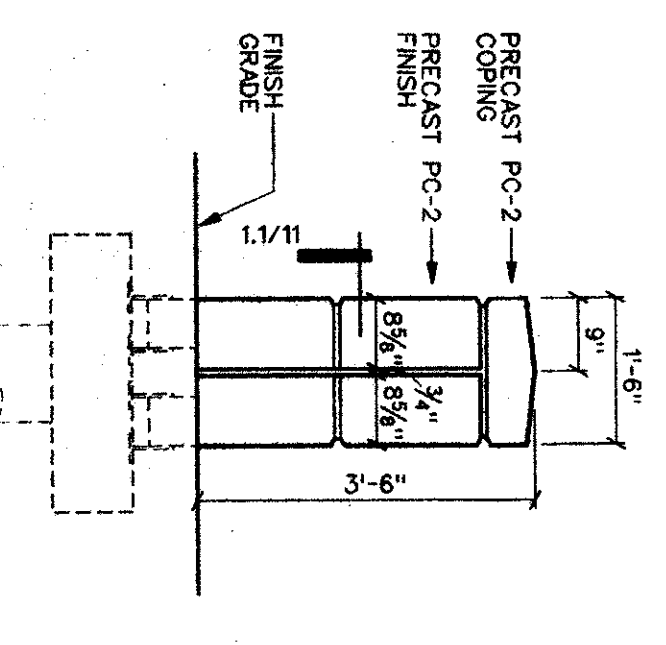
13 SIGN LOCATION
SCALE: NO SCALE



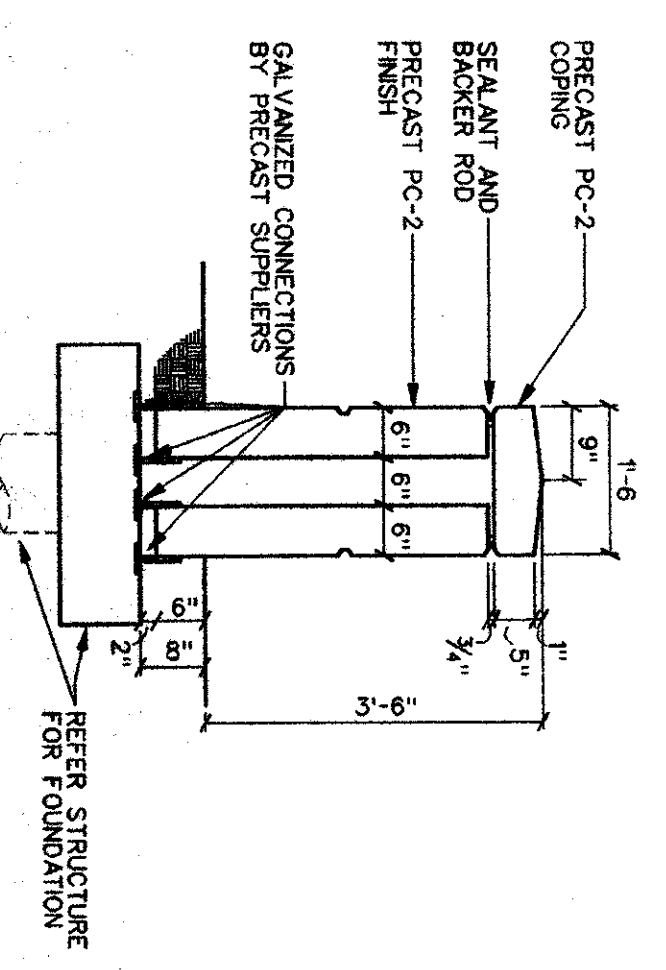
12 SIGN FRONT ELEVATION
SCALE: 1/2" = 1'-0"



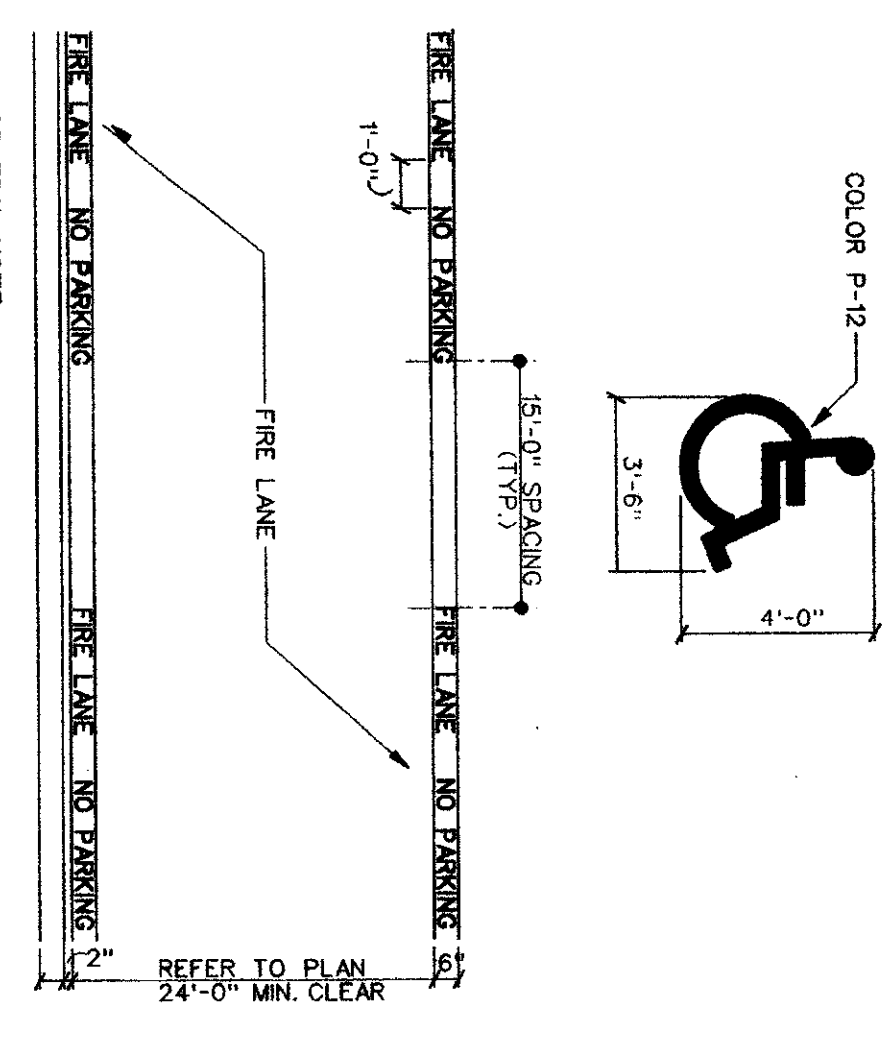
11 SIGN PLAN
SCALE: 1/2" = 1'-0"



10 SIGN END ELEVATION
SCALE: 1/2" = 1'-0"

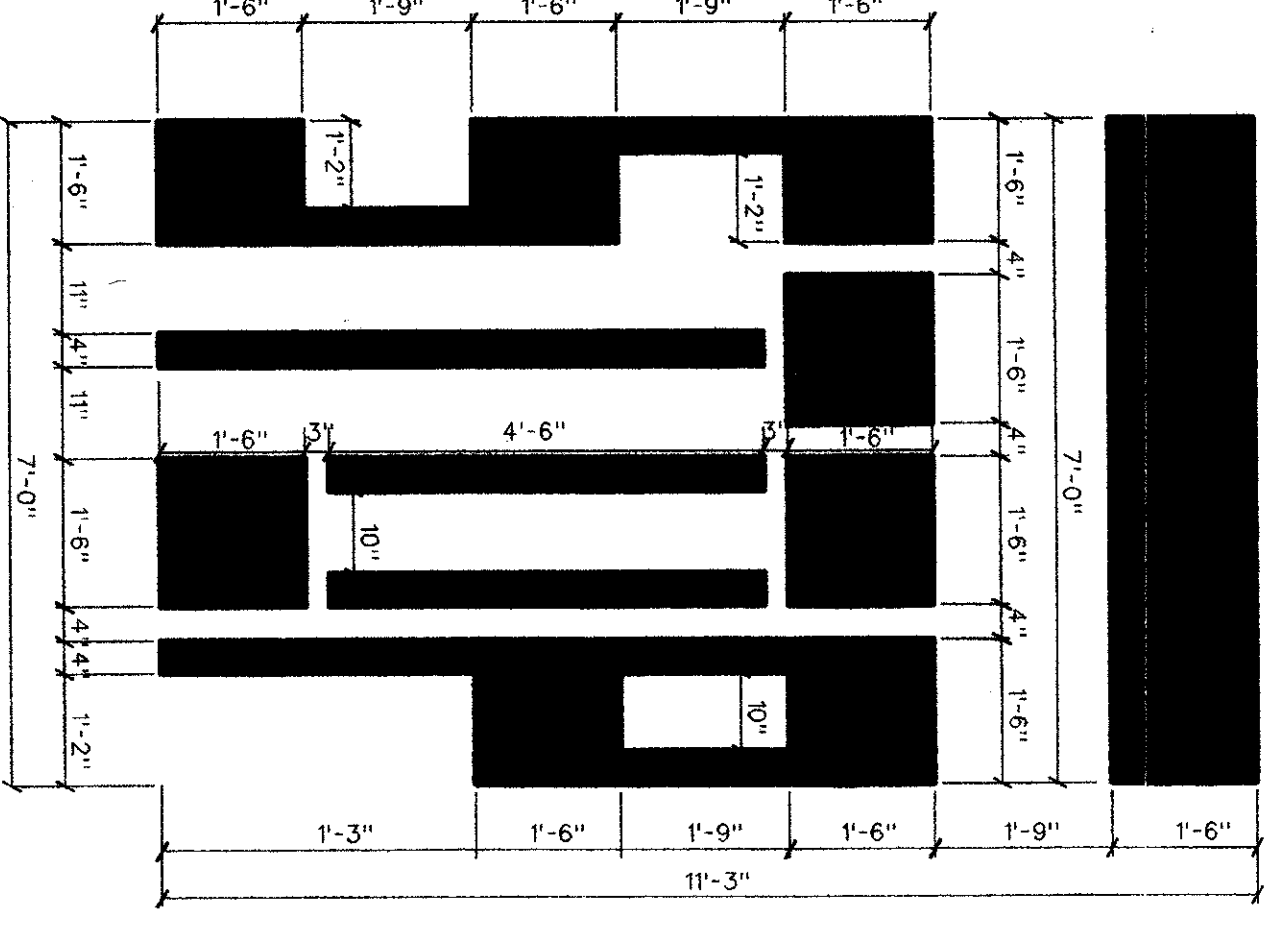


09 SIGN SECTION
SCALE: 1/2" = 1'-0"

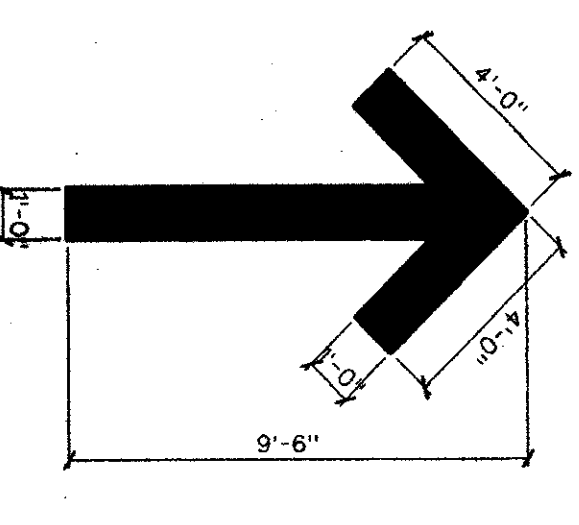


GENERAL NOTE:
A. STRIPING TO BE DONE IN ACCORDANCE WITH TOWN STANDARDS
STRIPING DETAIL:
A. PAINT
1. STRIPES SHALL BE SIX (6) INCHES WIDE PAINTED WITH AN EXTERIOR ACRYLIC LATEX PAINT
2. LETTERS SHALL BE FOUR (4) INCHES HIGH PAINTED WITH AN EXTERIOR ACRYLIC PAINT
B. COLOR SHALL BE TYPIC WHITE P-1
C. APPLICATION:
1. STRIPES MAY BRUSHED OR SPRAYED, ONE COAT TO FINISH
2. LETTERS SHALL BE STENCIL FORMED BRUSH APPLIED AND 3/16" AS DEFINED ON THIS SHEET

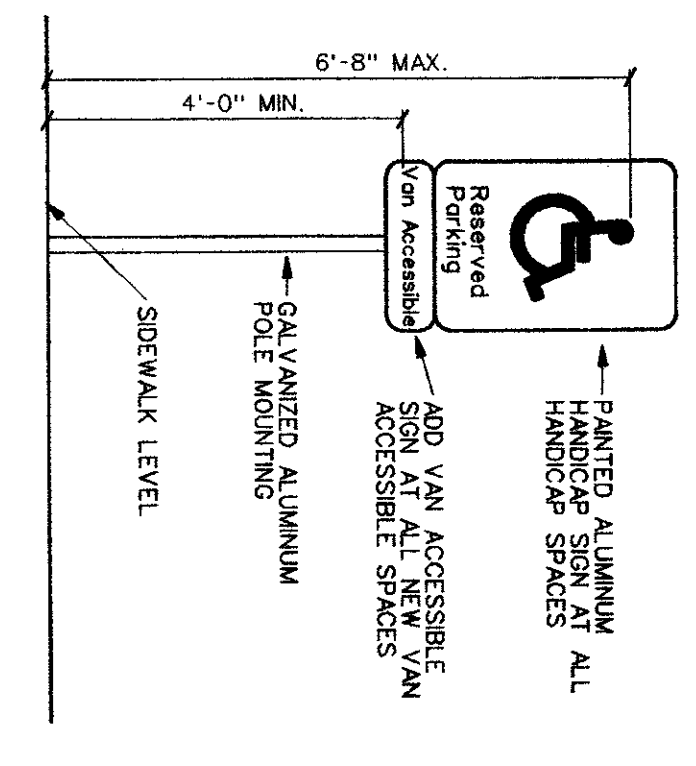
07 FIRE LANE PAVEMENT MARKINGS
SCALE: NOT TO SCALE



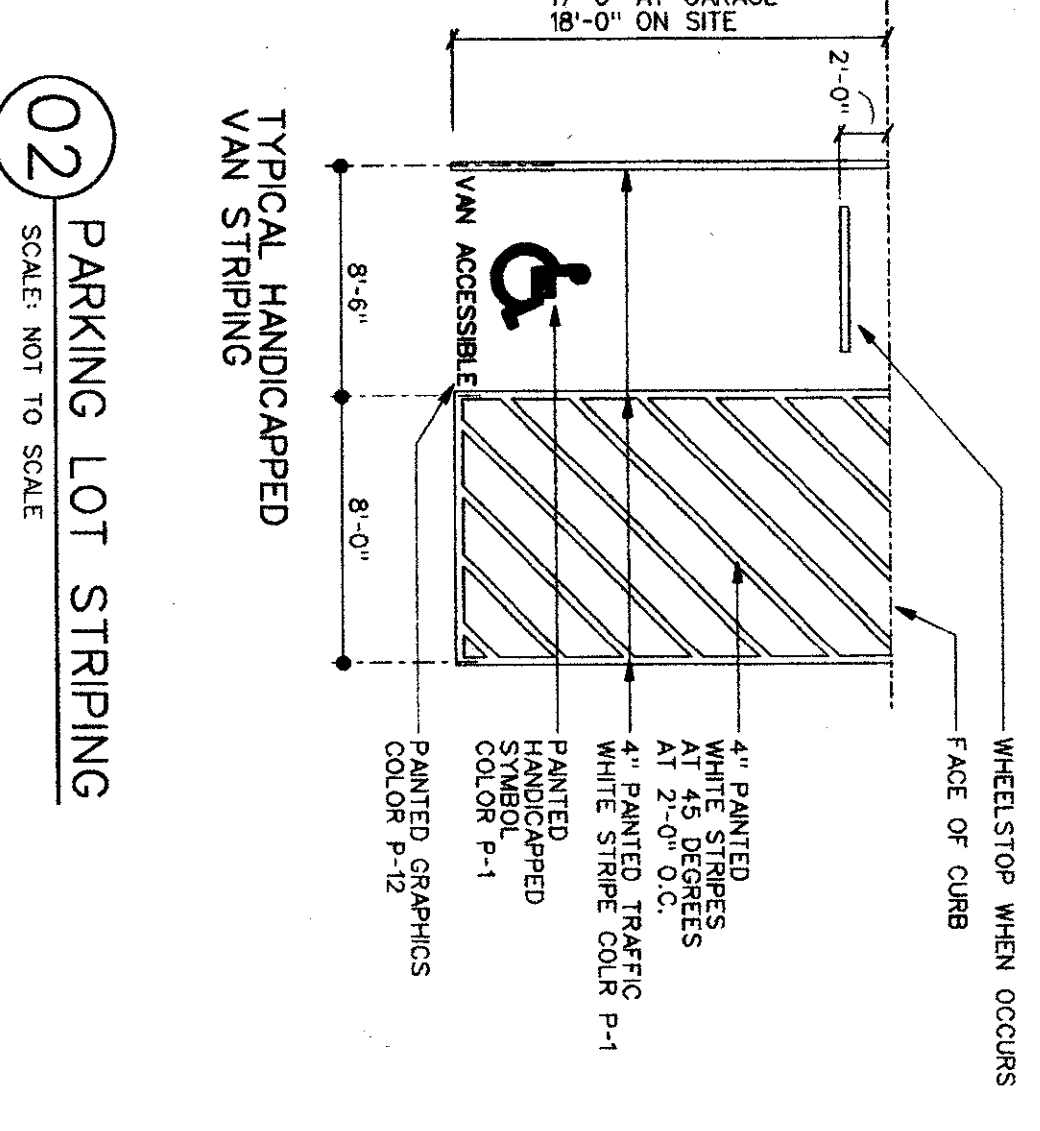
03 PARKING STRIPING
SCALE: NOT TO SCALE



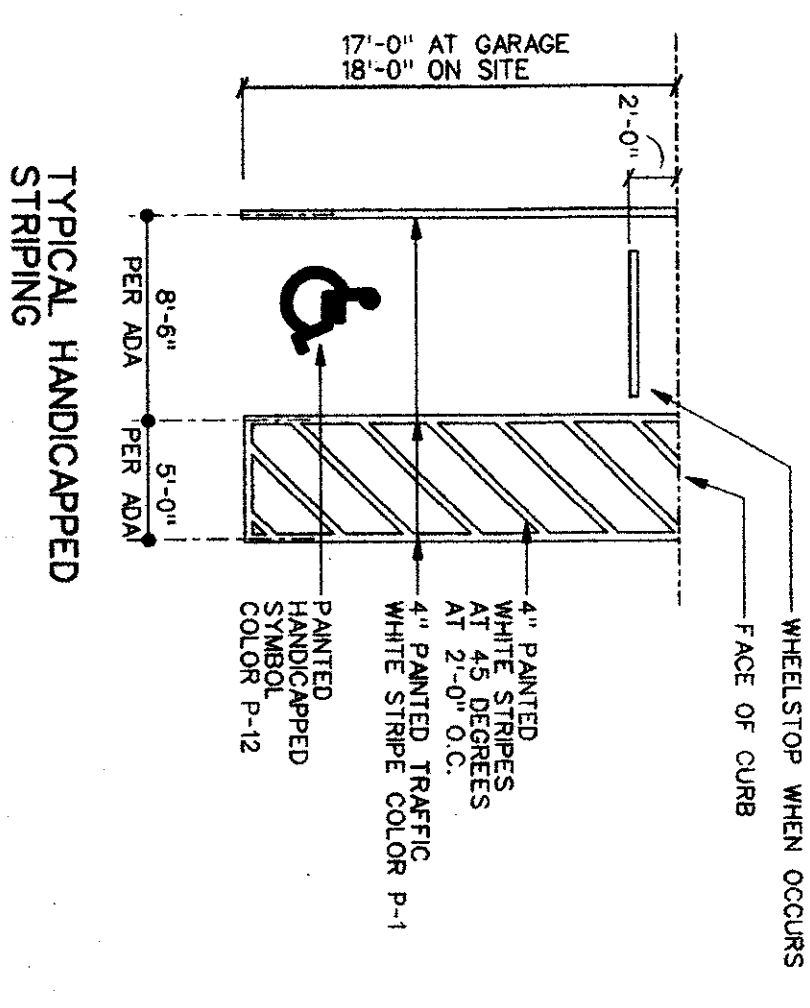
06 PAVEMENT MARKINGS
SCALE: NOT TO SCALE



04 HANDICAP SIGNAGE
NO SCALE



02 PARKING LOT STRIPING
SCALE: NOT TO SCALE



01 PARKING LOT STRIPING
SCALE: NOT TO SCALE

NOTE: REFER TO PREC. SECTION 7000 FOR STRIPING AND PAINT SPECIFICATIONS

OMNIPLAN
CORPORATION
1014197



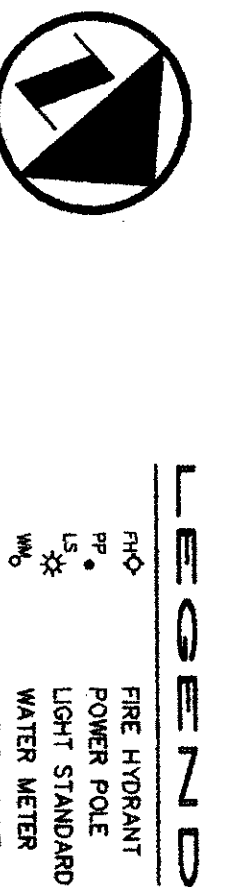
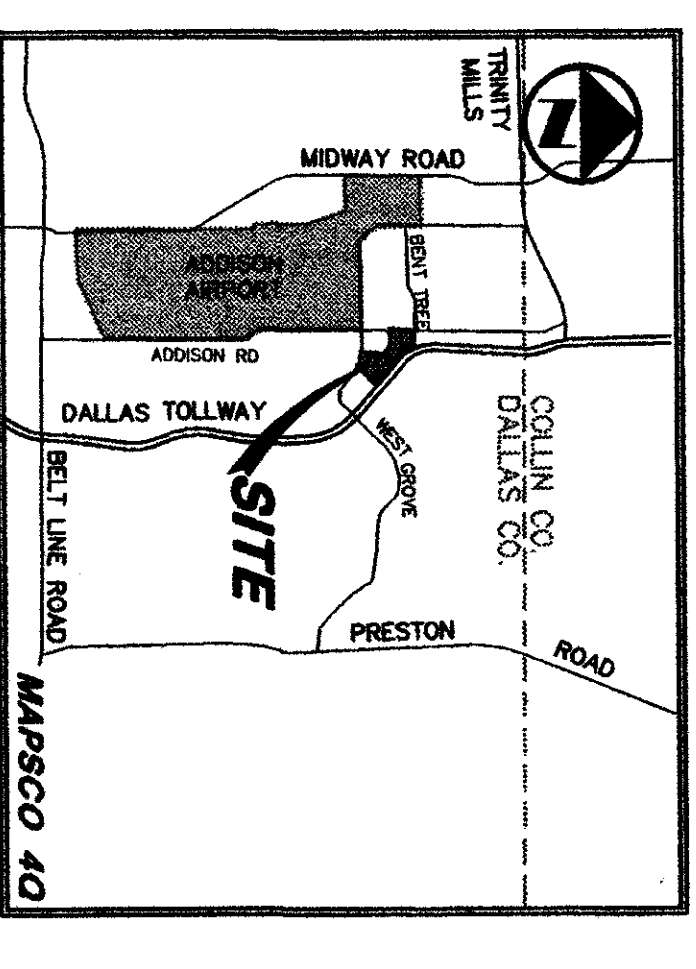
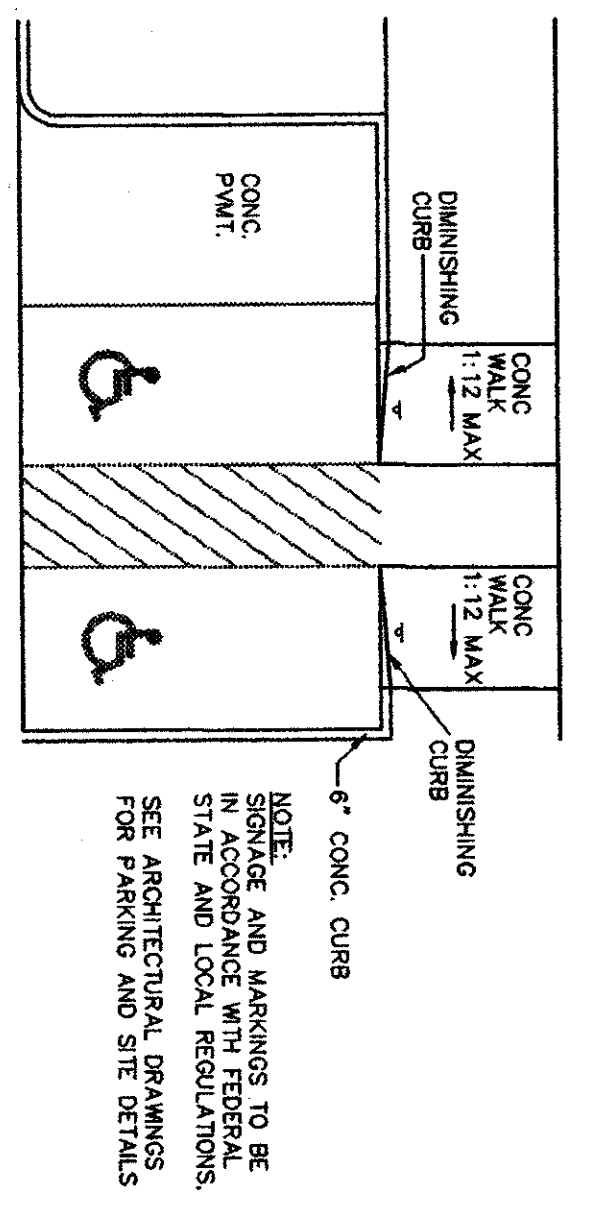
ONE HANOVER PARK OFFICE BUILDING ADDITION, TEXAS
INTERVEST COMPANIES
WILCOX DEVELOPMENT SERVICES, INC.
PROJECT MANAGER

PARKING AND SITE DETAILS
10/14/97
976.00

GENERAL NOTES

- Prior to final acceptance by the Town of Addison.
1. Town Registered Professional Engineer and certify that the project was constructed in accordance with the plans and specifications approved by the Town of Addison. Town Registered Engineer and 2 Blue line sets.
2. Erosion control measures shall be installed and maintained throughout the construction period.
3. A final top survey shall be provided along the public right-of-way showing the location of all monuments and markers.
4. Contractor shall demonstrate that the water and sanitary sewer systems meet the property features, setbacks and easement lines. In addition, the owner shall provide a 1/2" storm water type of the water service lines.
5. These include but may not be limited to the following:
 1. Town of Addison
 2. Lone Star Gas and Telephone
 3. Electric
 4. Storm Water
 5. Sewer
 6. Telephone
 7. Cable
 8. Fire
 9. Gas
 10. Water
6. Prior to beginning construction, the owner or his authorized representative shall convene a preconstruction conference among the Town of Addison, Consulting Engineer, Contractor, Utility Companies and other affected parties. Notify Bruce Elm at 469-2547 at least 48 hours prior to beginning construction.
7. Any existing pavement, curbs, and/or sidewalks damaged or removed will be repaired by the contractor at their expense.
8. Lot corners shall be marked with concrete monuments and set by the contractor. Concrete monuments shall be placed in public right-of-way. Concrete monuments shall be placed at the intersection of the monument and the street. The monument shall be set at such an elevation that after construction, the top of the monument will be not less than twelve (12) inches below the ground surface.
9. The contractor shall stomp a 2-inch "S" and a 2-inch "W" in the curb at the location of the sewer service and water service lines respectively, showing the extent of the intersecting streets will continue in a distance of 10 feet.
10. At intersections that have utility markings, the extent of the intersecting streets will continue in a distance of 10 feet.
11. Temporary or permanent street barricades shall remain at all points of ingress and egress to prevent public use until such time as the contractor has received final acceptance.
12. Contractor shall obtain right-of-way permit by the Town of Addison for working within the public right-of-way.
13. The utility contractor shall provide a qualified professional to perform individual testing during the construction of the project.
14. The contractor shall submit material sheets to the Town of Addison for approval prior to incorporating materials into the job.
15. The utility contractor shall submit to the Town of Addison for approval a trench safety plan sealed by a registered professional engineer for the installation of utilities greater than the (3) feet in depth.
16. All existing and proposed improvements (curbs, manholes, the hydraulic water meters, etc.) shall be subject to change by the contractor.

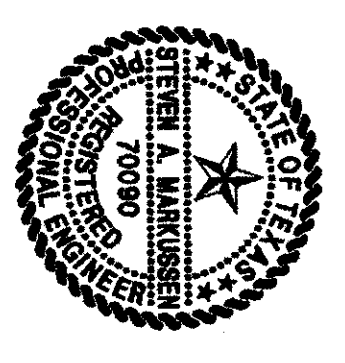
HANDICAP PARKING DETAIL
 NOT TO SCALE



GENERAL NOTES

1. SIZE AND LOCATION OF ALL UNDERGROUND UTILITIES HAVE BEEN REPRODUCED FROM PLANS ON FILE WITH THE TOWN OF ADDISON, CITY OF DALLAS, TEXAS THROUGH AUTHORITY AND PUBLIC UTILITIES PRIOR TO CONSTRUCTION.
2. REFER TO STANDARD DETAILS AND GENERAL NOTES SHEET FOR PAVING, DRAINAGE AND UTILITY STANDARD DETAILS.
3. REFER TO ARCHITECTURAL/MEP PLANS FOR LOCATIONS AND REQUIREMENTS OF SIGHT LIGHTING.
4. REFER TO ARCHITECTURAL PLANS FOR DETAILS AND UTILITY YARD, DOCK AREA, OVERHANGS AND CANOPY.
5. ALL DIMENSIONS ARE BACK OF CURB OR BACK OF CURB UNLESS OTHERWISE INDICATED.
6. CONTRACTOR TO PROVIDE EROSION CONTROL MEASURES ALONG BORDER OF SUBJECT TRACT IN ACCORDANCE WITH TO COMMISSIONING WORK.
7. BARRICADE AND PROTECT SIGNS SHALL CONFORM TO STATE OF TEXAS DEPARTMENT OF TRANSPORTATION PUBLIC STANDARDS.
8. CONTRACTOR TO VERIFY BUILDING DIMENSIONS AND FOUNDATION PLANS PRIOR TO CONSTRUCTION.
9. REFER TO ARCHITECTURAL AND LANDSCAPE DRAWINGS FOR ALL DESIGN AND DETAILING. CONCRETE PAVEMENT, CURBS, AND ARCHITECTURAL CONCRETE PAVEMENT.
10. REFER TO ARCHITECTURAL DRAWINGS FOR STRIPING AND SIGNAGE DETAILS AND LOCALITIES.

THE SEAL APPEARING ON THIS DOCUMENT WAS AUTHORIZED BY STATE ENGINEER DE 7000 IN ACCORDANCE WITH THE PROFESSIONAL ENGINEERING ACT UNDER THE TEXAS ENGINEERING PRACTICE ACT.



REVISION-ADDED SHEET 03/02/98
 REVISION-DELETION LINE & C. NOTES 10/24/97
 REVISION-DRAWING 10/14/97

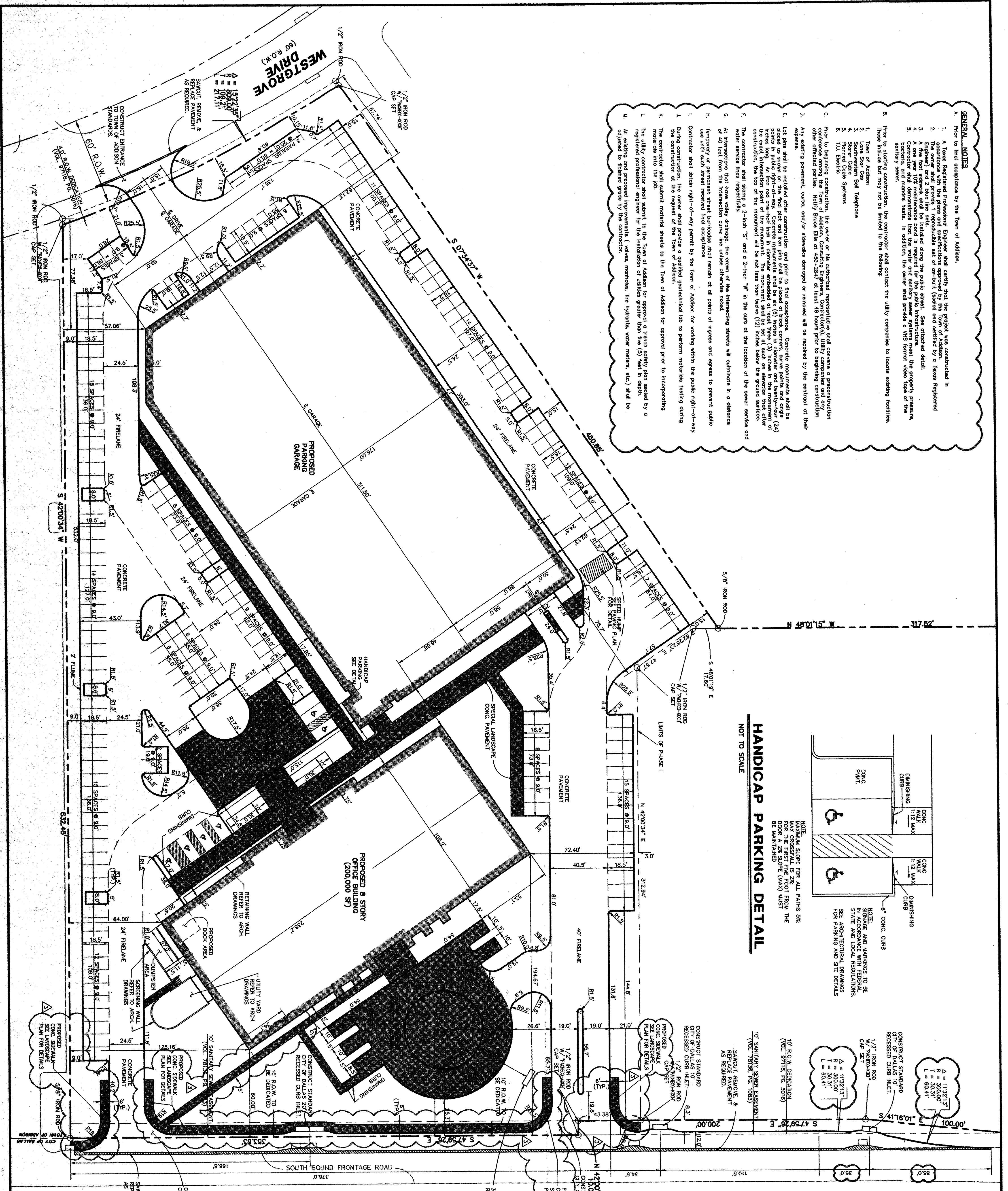
PACHO KOCH 9401 181 Freeway, Suite 300
 Consulting Engineers, Inc. Dallas, Texas 75249
 (972) 235-8051

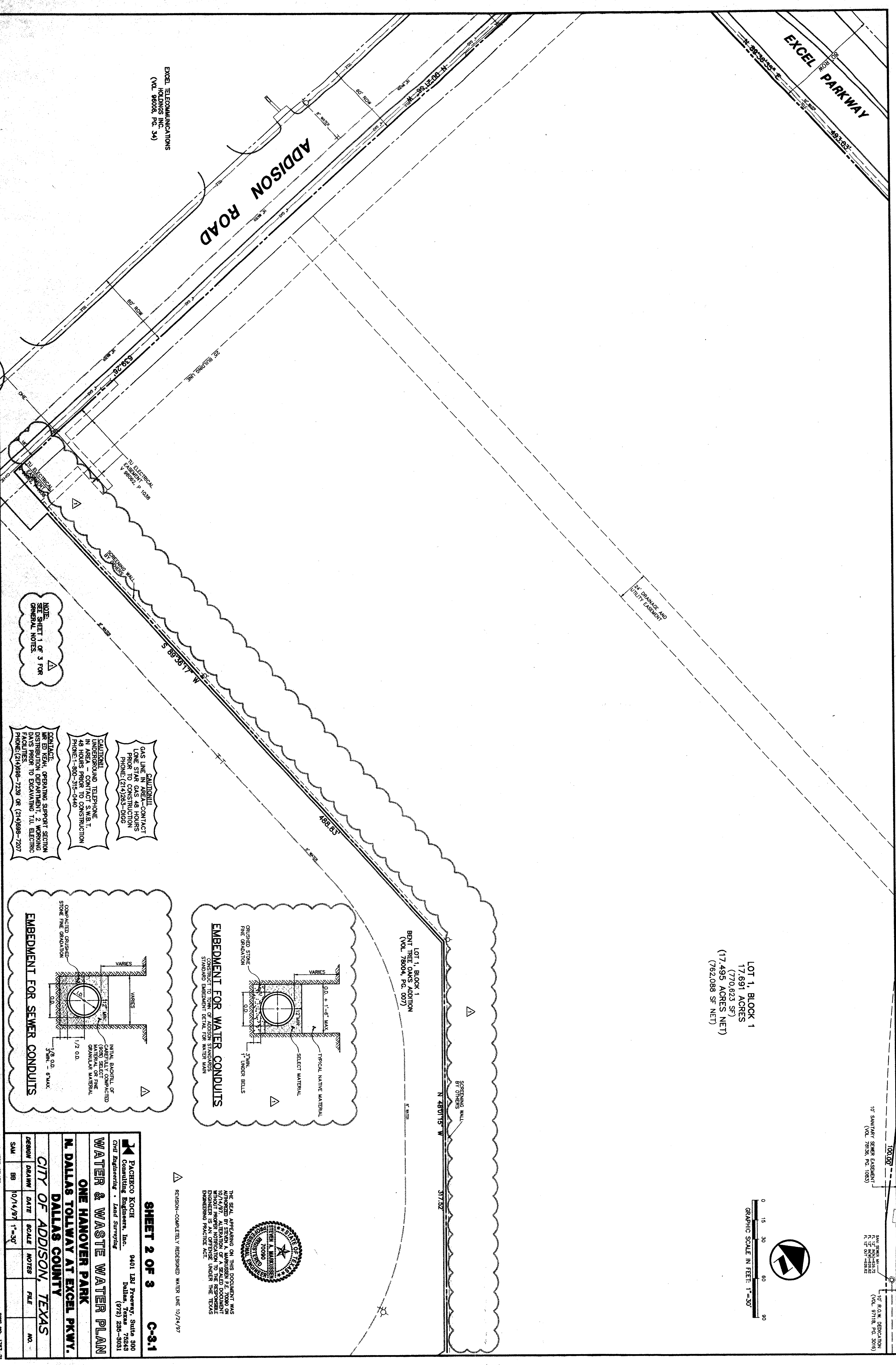
DIMENSIONAL CONTROL PLAN
ONE HANOVER PARK
DALLAS TOLLWAY AT EXCEL PKWY.
 CITY OF ADDISON, TEXAS
 DESIGN DATE SCALE NOTES FILE NO.
 SAM THH 9/30/97 1"=30'

ONE HANOVER PARK OFFICE BUILDING ADDISON, TEXAS
 INTEREST COMPANIES DEVELOPER
 WILCOX DEVELOPMENT PROJECT MANAGER
 DIMENSIONAL CONTROL PLAN
 9716.00
 EARLY ISSUE 9.5.97
 C1.0

OMNIPLAN
 OFFICE CENTER EAST - DALLAS, TX 75204
 COMPANY © ALL RIGHTS RESERVED - 1997

This seal indicates only that I have reviewed the consultant's work and confirmed it with the original project.





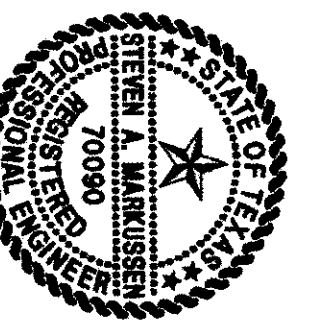
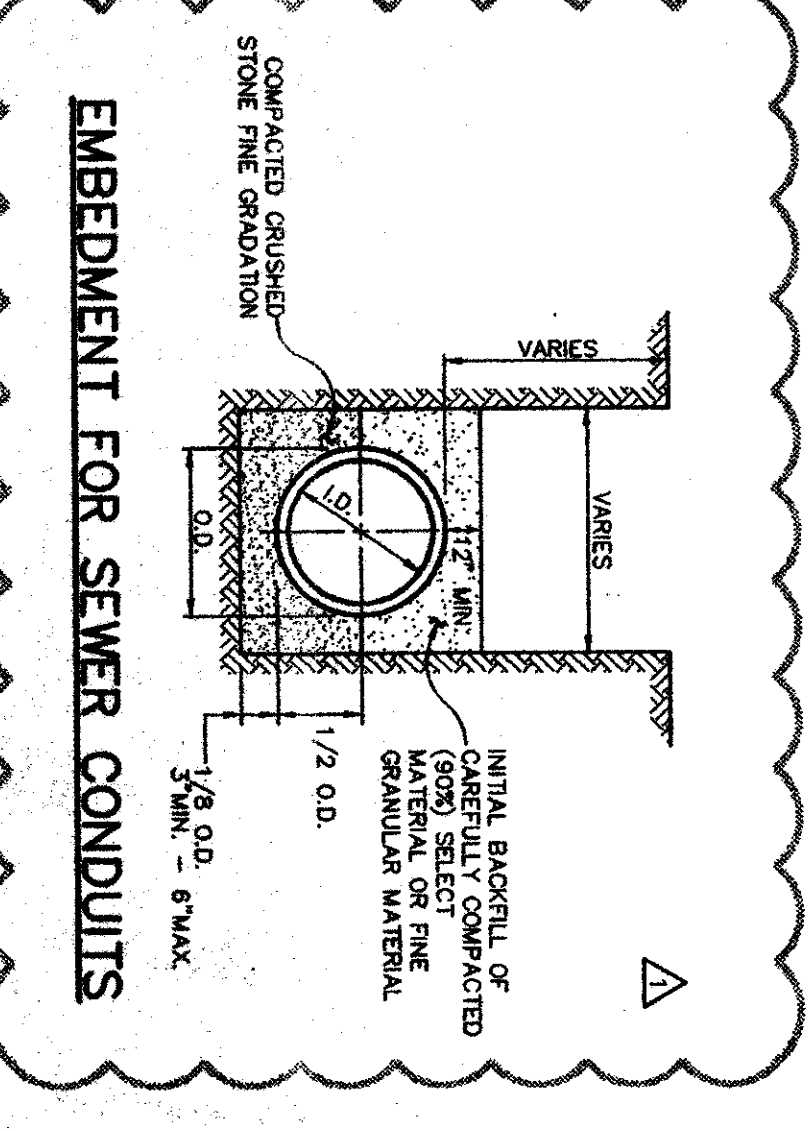
EXCEL TELECOMMUNICATIONS
HOLDINGS, INC. (PC. 34)
(VOL. 88008, PG. 34)

NOTE: SHEET 1 OF 3 FOR GENERAL NOTES.

CAUTION!
GAS LINE IN AREA - CONTACT
DISTRIBUTION DEPARTMENT 24 HOURS
PRIOR TO CONSTRUCTION
PHONE: (214) 283-3105

CAUTION!
UNDERGROUND TELEPHONE
IN AREA - CONTACT S.W.B.T.
48 HOURS PRIOR TO CONSTRUCTION
PHONE: (214) 283-5040

CONTACT:
MR. ED KEAM, OPERATING SUPPORT SECTION
DISTRIBUTION DEPARTMENT 24 HOURS
PRIOR TO CONSTRUCTION
FACILITIES TO EXAMINERS 111. ELECTRIC
PHONE: (214) 888-7299 OR (214) 888-7507



THE SEAL, SIGNATURE AND EXPIRATION DATE OF THIS DOCUMENT ARE VALID ONLY IF THE SEALING AND EXPIRATION DATE OF THIS DOCUMENT IS IN ACCORDANCE WITH THE TEXAS ENGINEERING PROFESSIONAL ACT.

SHEET 2 OF 3 C-31

PAJOCKO KOCH
Consulting Engineers, Inc.
Civil Engineering - Land Surveying
9401 LBJ Freeway, Suite 300
Dallas, Texas 75243
(972) 285-5501

WATER & WASTE WATER PLAN
ONE HANOVER PARK
N. DALLAS TOLLWAY AT EXCEL PKWY.
DALLAS COUNTY
CITY OF ADDISON, TEXAS

DESIGN	DRAWN	DATE	SCALE	NOTES	FILE	NO.
SAW	BB	10/14/97	1"=30'			

DATE: 10/14/97
DRAWN: BB
SCALE: 1"=30'

REVISION - COMPLETELY REDESIGNED WATER LINE 10/24/97

This seal indicates only that I have reviewed the consultant's work and coordinated it with the overall project.

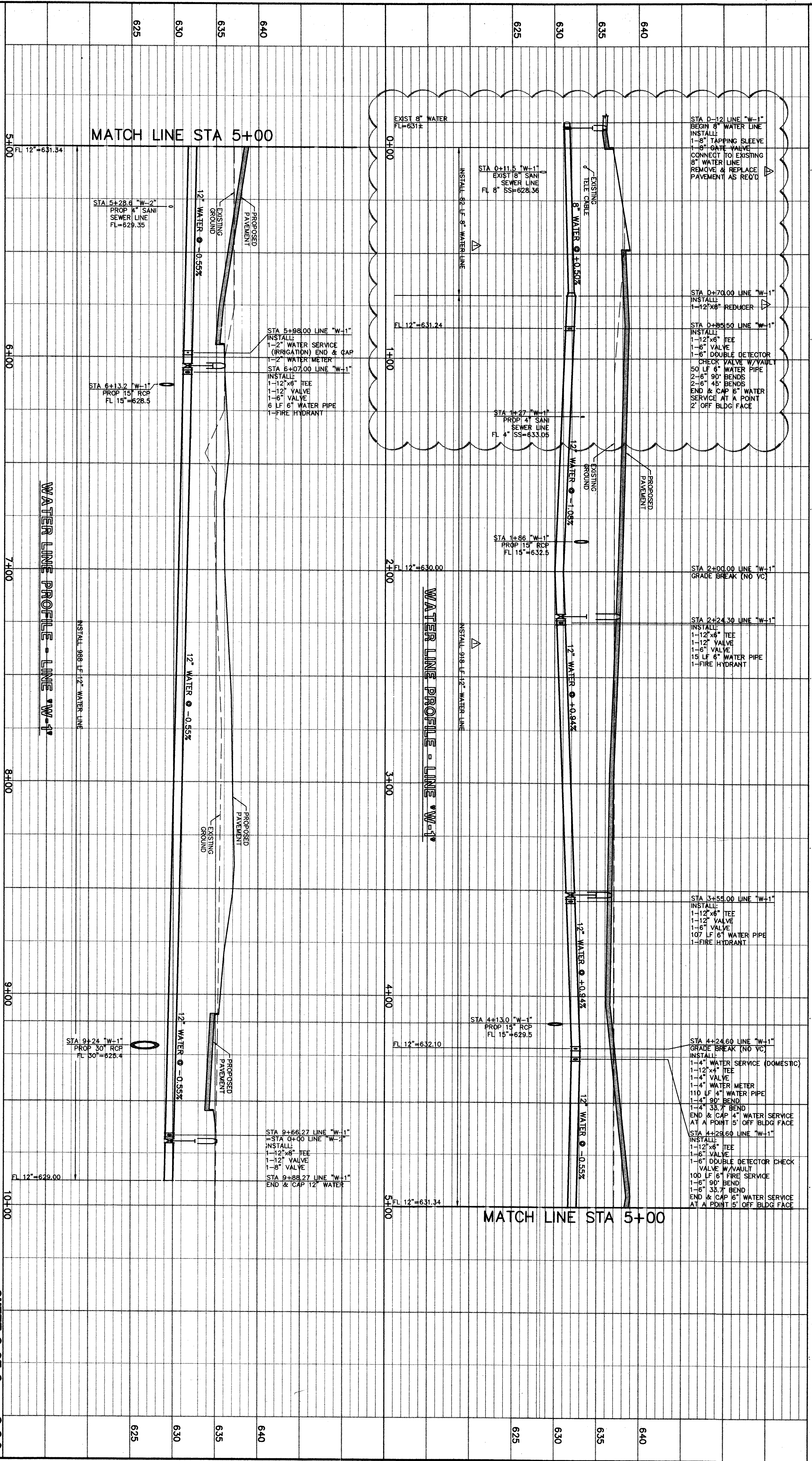


OMNIPLAN
OFFICE CENTER EAST - DALLAS, TX 75204
COPYRIGHT © ALL RIGHTS RESERVED • 1997

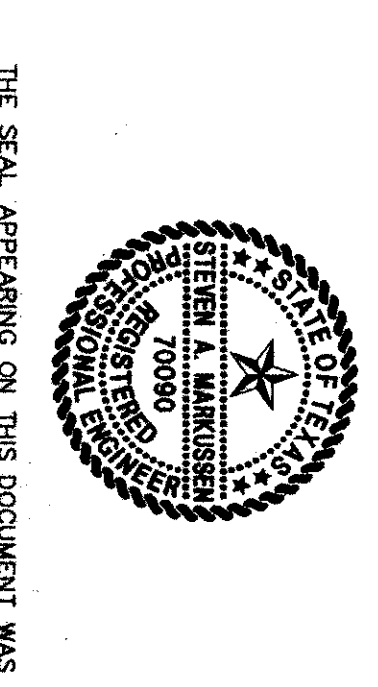
ONE HANOVER PARK OFFICE BUILDING
ADDISON, TEXAS

INTEREST COMPANIES
DEVELOPER
WILCOX DEVELOPMENT
PROJECT MANAGER

WATER & WASTEWATER PLAN
9716.00
10.14.97



NOTE:
 CONTRACTOR TO PROVIDE MINIMUM
 STORM DRAIN LINES



THE SEAL APPEARING ON THIS DOCUMENT WAS
 AUTHORIZED BY STEVEN A. WARKENTIN, P.E. TO BE USED
 IN CONNECTION WITH THE DESIGN AND CONSTRUCTION
 OF THE PROJECT DESCRIBED HEREON. IT IS THE RESPONSIBILITY
 OF THE ENGINEER TO MAINTAIN THE SEAL UNDER THE TEXAS
 PROFESSIONAL ENGINEERING ACT.

REVISION - WATER LINE 03/26/98

PAINTERCO KOCH Consulting Engineers, Inc. Civil Engineering - Land Surveying 9401 124 th Freeway, Suite 300 Dallas, Texas 75243 (972) 295-9851					
WATER LINE PROFILE ONE HANOVER PARK N. DALLAS TOLLWAY AT EXCEL PKWY. DALLAS COUNTY, TEXAS					
DESIGN	DATE	SCALE	NOTES	FILE	NO.
SMW	10/22/97	1"=20'-11"			

SHEET 3 OF 3 C-3.2

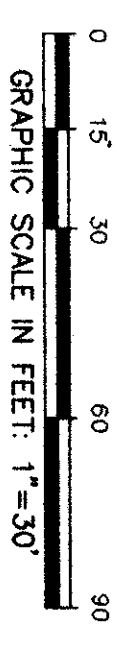
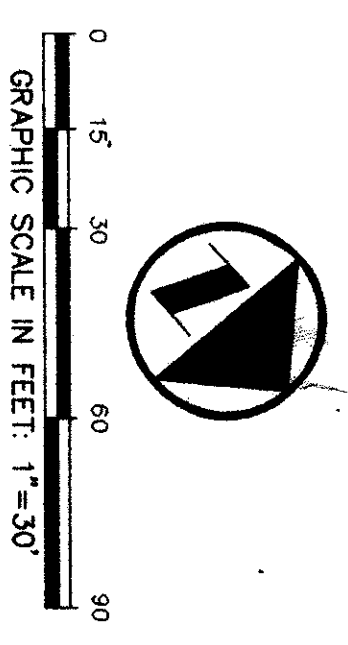
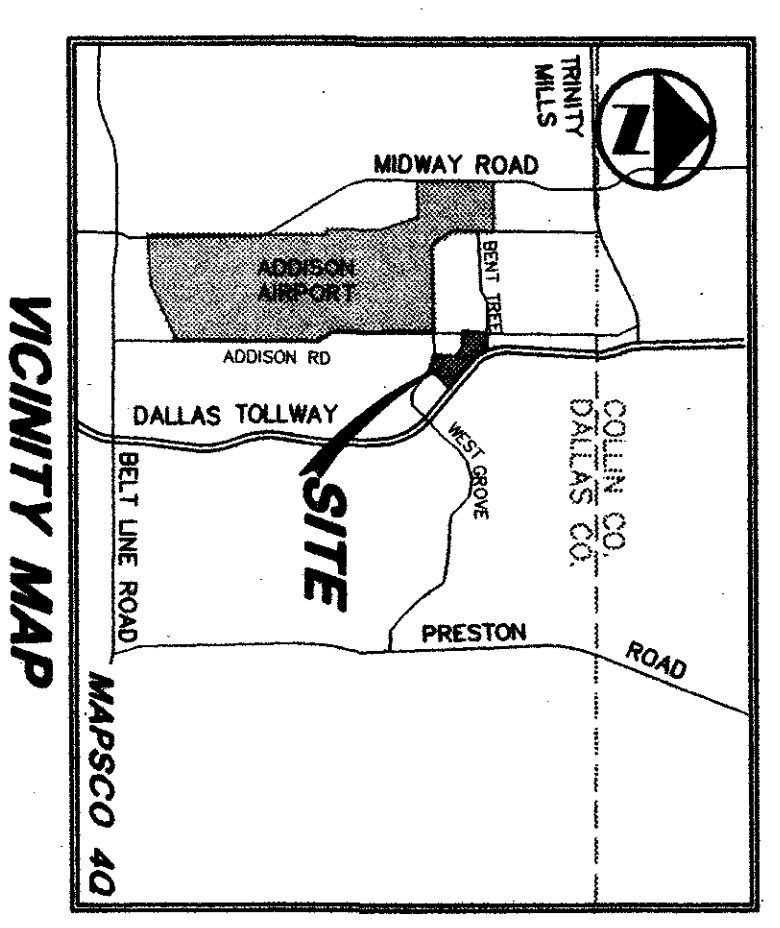
6/20/98
 8/2/98
 T.H.A.C.E.Y.

TOWN OF ADDISON

WATER AND SANITARY SEWER GENERAL NOTES

1. ALL WORK, UNLESS OTHERWISE NOTED, SHALL CONFORM TO THE STANDARD SPECIFICATIONS FOR PUBLIC WORKS CONSTRUCTION, ISSUED BY THE NORTH CENTRAL TEXAS COUNCIL OF GOVERNMENTS, AND TOWN OF ADDISON STANDARD CONSTRUCTION SPECIFICATIONS.
2. UNLESS OTHERWISE NOTED, ALL CONCRETE SHALL BE CLASS "A" (3000 PSI).
3. THE HORIZONTAL AND VERTICAL LOCATIONS OF EXISTING SURFACE UTILITIES HAVE BEEN DETERMINED FROM DATA RECORDED BY OTHERS. CONTRACTOR SHALL VERIFY THAT NECESSARY CROSSING CLEARANCES BETWEEN EXISTING AND PROPOSED UTILITIES EXIST PRIOR TO CONSTRUCTION OF ANY SUCH CROSSING. IT WILL BE THE RESPONSIBILITY OF THE CONTRACTOR TO PROTECT ALL PUBLIC UTILITIES IN THE CONSTRUCTION OF THIS PROJECT.
4. CONTRACTOR SHALL MAINTAIN ONE SET OF "RECORD DRAWINGS" ON SITE WHICH WILL BE SUBMITTED TO THE ENGINEER FOR APPROVAL. THE ENGINEER'S RECORD DRAWINGS SHALL INDICATE THE LOCATION OF ALL SUBTERRANEAN UTILITY IMPROVEMENTS, AND INDICATE TIES TO ALL MANHOLES, CULVERTS, INLETS, JUNCTION BOXES, ETC.
5. ALL WATER MAINS SHALL BE PVC C900, DR 18, CLASS 150.
6. ALL WATER MAINS UNLESS OTHERWISE NOTED SHALL HAVE A MINIMUM COVER OF 48" BELOW FINISHED GRADE.
7. SANITARY SEWER PIPE SHALL BE PVC SDR-35.
8. THE CONTRACTOR IS RESPONSIBLE FOR COMPLIANCE WITH ALL FEDERAL, STATE AND LOCAL REGULATIONS REGARDING TRAFFIC SAFETY.
9. BARRICADING AND PROJECT SIGNS SHALL CONFORM TO STATE DEPARTMENT OF HIGHWAYS AND PUBLIC TRANSPORTATION BARRICADING AND CONSTRUCTION STANDARDS.
10. PRIOR TO COMMENCEMENT OF CONSTRUCTION, BONDS AND SHALL BE SUBMITTED TO THE TOWN AS REQUIRED.
11. WHERE A SANITARY SEWER PARALLELS A WATERLINE, THE SEWER SHALL BE CONSTRUCTED OF PVC PER THE SPECIFICATIONS WITH A PRESSURE RATING FOR BOTH THE PIPE AND JOINTS OF 200 PSI. THE VERTICAL SEPARATION SHALL BE A MINIMUM OF FOUR FEET BETWEEN OUTSIDE DIAMETERS. THE SEWER SHALL BE LOCATED BELOW THE WATERLINE.
12. ALL UTILITY OPERATOR SHALL BE EQUIPPED WITH HERSEY 89-1 REGISTERS AND PIPES FOR CONNECTION TO TOUCHLESS AIR SYSTEM OR AS SPECIFIED BY THE TOWN OF ADDISON.

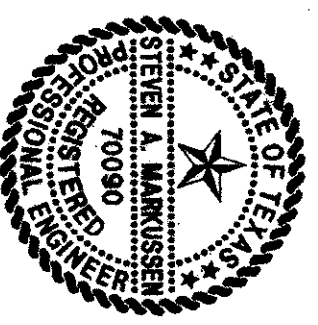
NOTE:
PROPOSED WATER LINES SHALL BE CONCRETE ENCASED TO L.F. EACH WAY AT SEWER CROSSINGS.
= AREAS OF PROPOSED ENCASUREMENT



CAUTION! AND TELEPHONE IN AREA - CONTACT S.W.B.T. 48 HOURS PRIOR TO CONSTRUCTION. PHONE: 800-315-0440

CAUTION! GAS LINE IN AREA - CONTACT GAS LINE STAR GAS 48 HOURS PRIOR TO CONSTRUCTION. PHONE: (214) 988-7207

CONTACT: OPERATING SUPPORT SECTION DISTRIBUTION DEPARTMENT, 2 WORKING FACILITIES TO EXCAVATING TUL ELECTRIC. PHONE: (214) 988-7239 OR (214) 988-7207



THE SEAL APPEARING ON THIS DOCUMENT WAS ISSUED TO THE ENGINEER BY THE BOARD OF PROFESSIONAL ENGINEERS OF THE STATE OF TEXAS. ANY REVISIONS TO THIS DOCUMENT SHALL BE MADE BY THE ENGINEER.

REVISION - WATER LINE 03/28/98
REVISION - SHINE WATER LINE 10/24/97

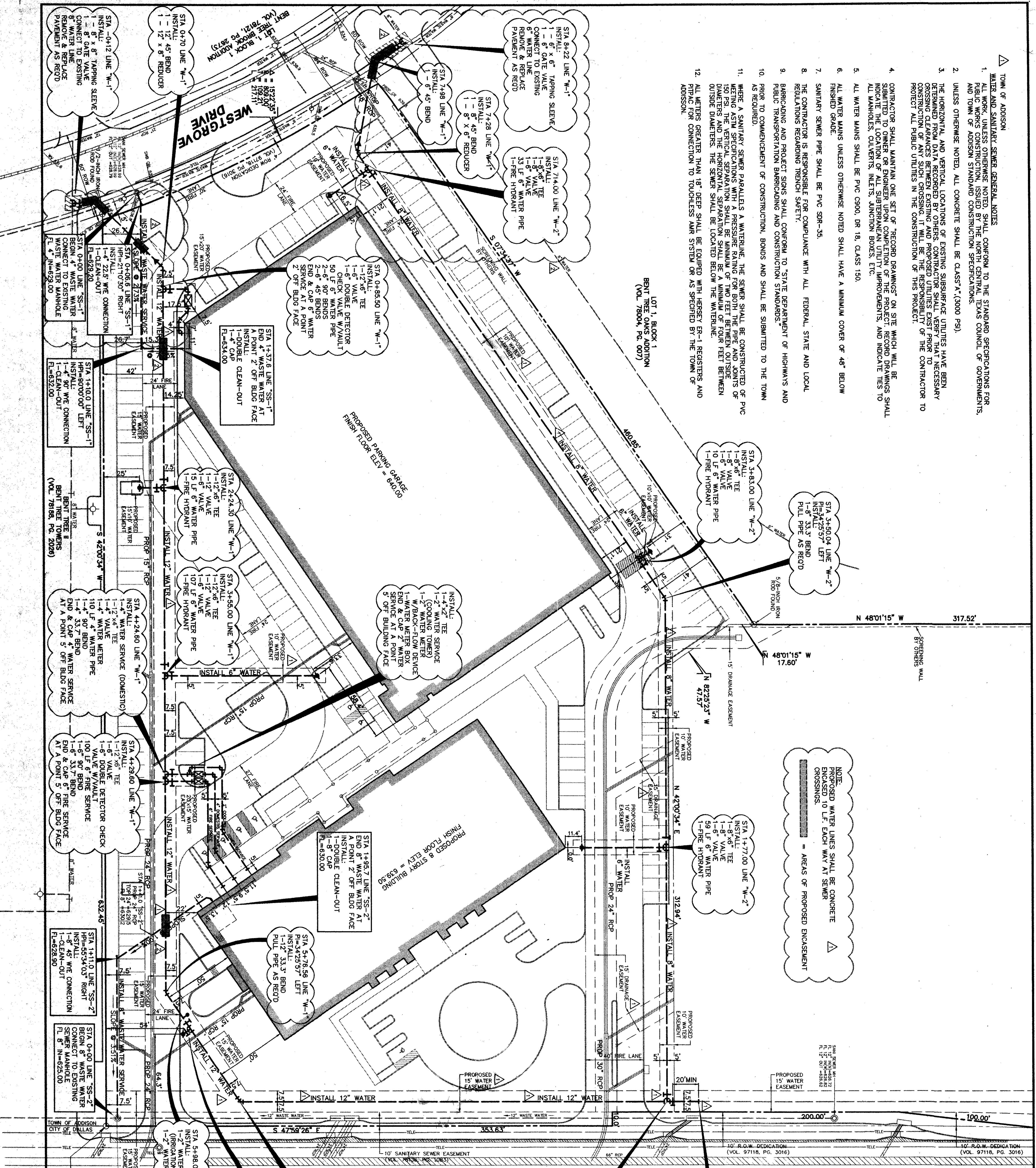
SHEET 1 OF 3
C-3

PACHECO KOEHL
Consulting Engineers, Inc.
Civil Engineering - Land Surveying
9401 Led Freeway, Suite 300
Dallas, Texas 75243
(972) 253-3831

WATER & WASTE WATER PLAN
ONE HANOVER PARK
DALLAS TOLLWAY AT EXCEL PKWY.
CITY OF ADDISON, TEXAS

DESIGN	DRAWN	DATE	SCALE	NOTES	FILE	NO.
SM	BB	10/22/93	1"=30'			

DWG NO. 170-97-19



OMNIPLAN

10.14.97

9716.00

WATER & WASTEWATER PLAN

INTEREST COMPANIES
WILCOX DEVELOPMENT
SERVICES, INC.
PROJECT MANAGER

ONE HANOVER PARK
OFFICE BUILDING
ADDISON, TEXAS

10.14.97

9716.00

WATER & WASTEWATER PLAN

REVISION - SHINE WATER LINE 10/24/97
REVISION - WATER LINE 03/28/98
REVISION - RR-22 03/28/98

11

100% CONTRACT DOCUMENTS

ONE HANOVER PARK
OFFICE BUILDING AND OPEN PARKING GARAGE

ADDISON, TEXAS

OMNIPLAN PROJECT NO. 9716.00

INTERVEST COMPANIES
DEVELOPER

WILCOX DEVELOPMENT
SERVICES, INC.
PROJECT MANAGER

ISSUED 14 OCT. 1997

Handwritten marks and signature

B5-4
116033 DALLAS PKWY
ONE HANOVER PARK
9/29/98 'AS-BUILT'

OMNIPLAN

OTTPLAC CENTER EXPT. DALLAS, TX 75204
COPYRIGHT © ALL RIGHTS RESERVED • 1997

SCHMIDT & STACY
MECHANICAL ENGINEERS DALLAS

TT/ET
STRUCTURAL ENGINEERS DALLAS

SWA GROUP
LANDSCAPE CONSULTANTS DALLAS

PACHECO KOCH
CIVIL ENGINEERS DALLAS

PMK
ACOUSTICAL ENGINEERS DALLAS

DESHAZO, TANG & ASSOC
TRAFFIC ENGINEERS DALLAS

