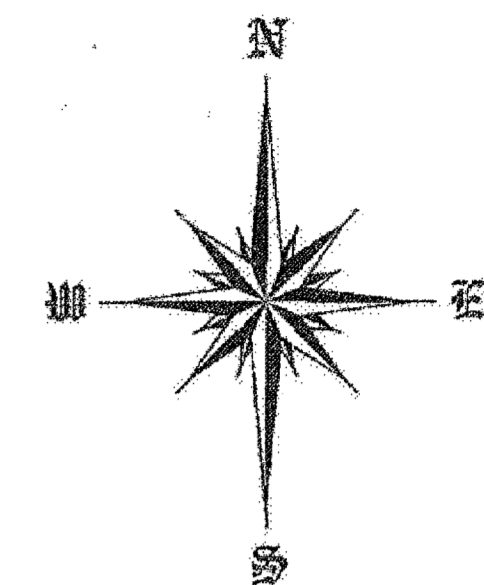


CURVE	DELTA ANGLE	RADIUS	ARC LENGTH	CHORD BEARING	CHORD LENGTH
FIELD C1	04°39'00"	1800.00'	129.87'	S 18°42'20" E	129.83'
PER PLAT C1	04°39'00"	1800.00'	129.86'	S 18°44'43" E	129.86'



NORTH
SCALE 1" = 20'

LEGEND

- C.M. - CONTROLLING MEASUREMENT
- CP - POWER POLE
- S - SIGN
- B - BOLLARD
- L - LIGHT POLE
- M - METER
- W - WATER METER
- F - FLYDRAIN
- WV - WATER VALVE
- WGB - WATER GROUND BOX
- O - OCEAN
- M - MANHOLE
- SS - SANITARY SEWER MANHOLE
- SS - SANITARY SEWER LINE
- W - WATER LINE
- PC - PARKING COUNT
- HC - HANDICAP PARKING SPACE
- PR - DRIVE

BASE OF RECORDS
BEARINGS SHOWN ARE BASED ON THE FINAL PLAT OF LOT 1, BLOCK 1, BENT TREE BANK TOWER ADDITION NO. 2 AS RECORDED IN VOLUME 86112, PAGE 161, M.R.D.C.T.

ZONING NOTE
THE PROPERTY IS ZONED P3, BY ORDINANCE NO. 085-05D. THE BUILDING SET BACK LINES AND PARKING COUNT ARE PER THE APPROVED PLAN THAT WAS FILED WITH THE PD.

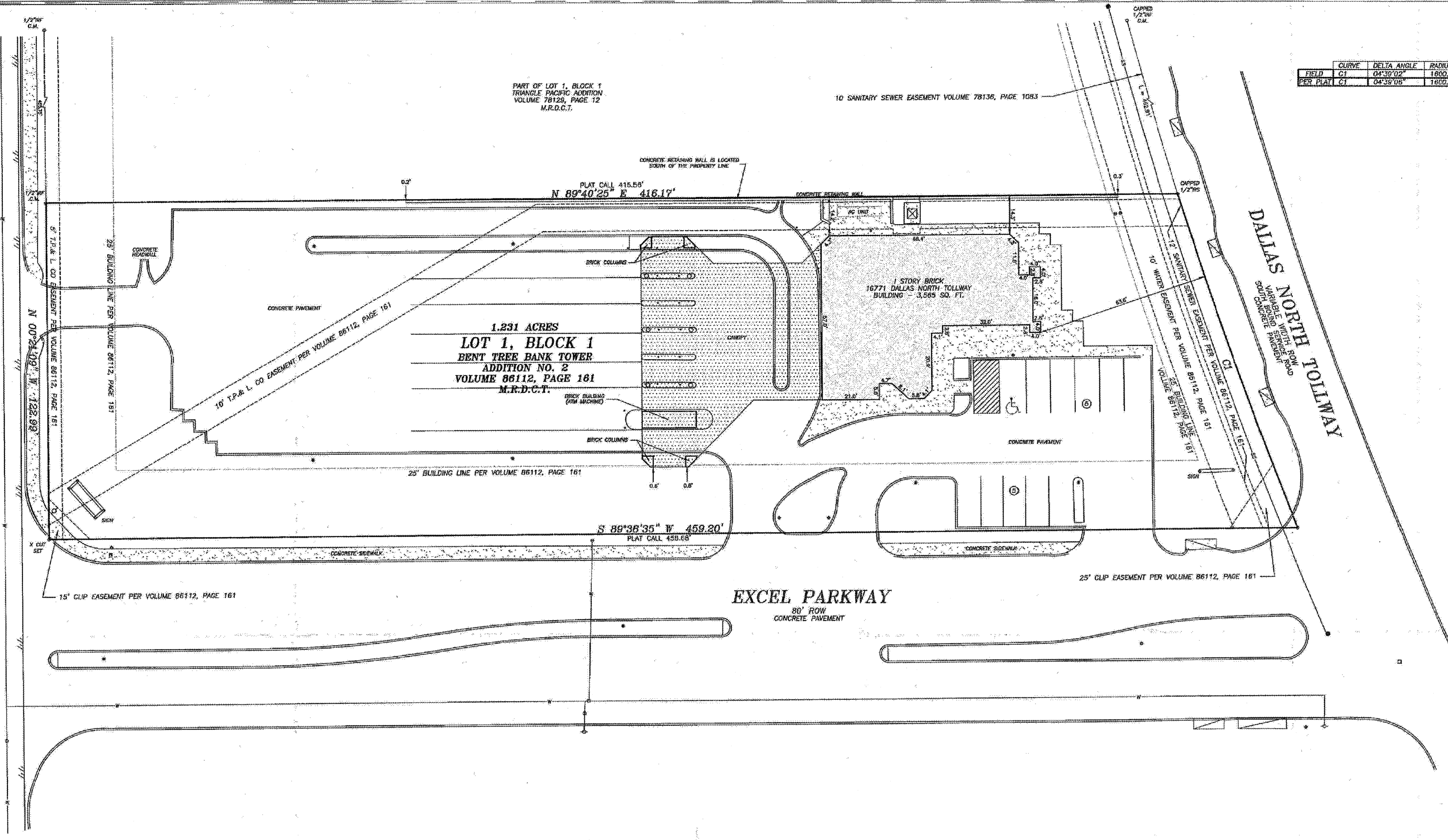
PARKING COUNT
1 SPACE PER 300 SQ. FT. OF OFFICE SPACE
PARKING PROVIDED:
10 PARKING SPACES
1 HANDICAP PARKING SPACE
11 TOTAL PARKING SPACE

INCLUDED FOR INFORMATIONAL PURPOSES ONLY.

ALTA/ACSM LAND TITLE SURVEY
LOT 1, BLOCK 1
BENT TREE BANK TOWER ADDITION NO. 2
CITY OF ADDISON
DALLAS COUNTY, TEXAS

G.F. No. 4713000102

SURDUKAN SURVEYING, INC.
P.O. BOX 125
ARMA, TEXAS 75409
(972) 924-8200



EXCEL PARKWAY
80' ROW
CONCRETE PAVEMENT

LEGAL DESCRIPTION

BEING all of Bent Tree Bank Tower Addition, No. 2, an Addition to the City of Addison, Dallas County, Texas, according to the Plat thereof recorded in Volume 86112, Page 161, Map Records, Dallas County, Texas.

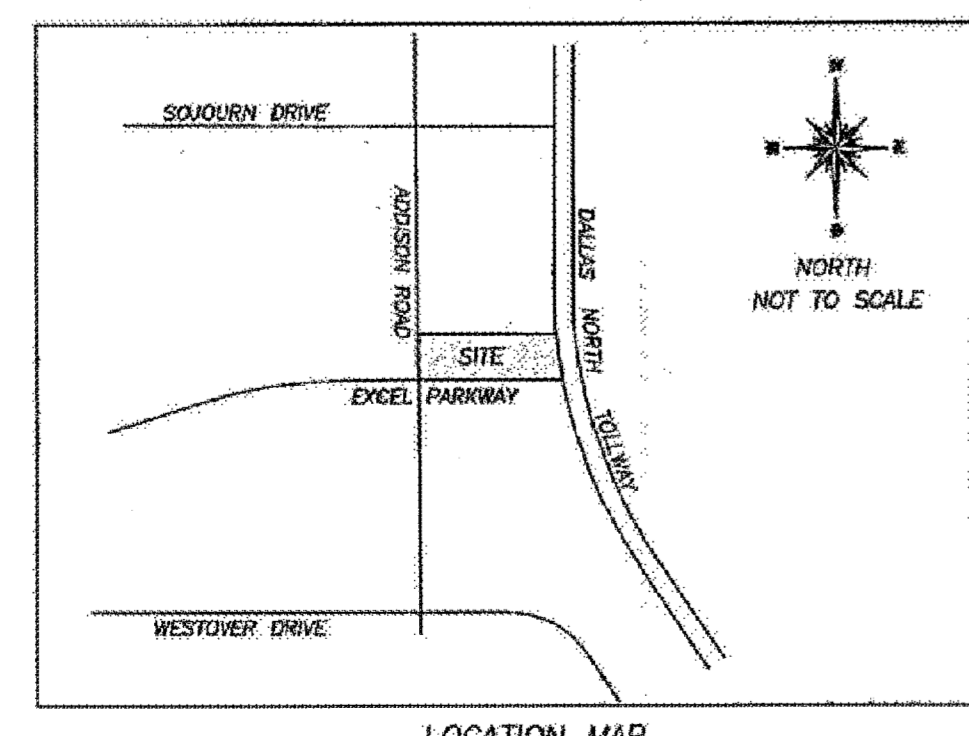
SURVEYOR'S CERTIFICATION

TO (name of insured, if known), (name of lender, if known) (name of insurer, if known), (name of others as negotiated with the client):

This is to certify that this map or plat and the survey on which it is based were made accordance with the 2011 Minimum Standards Detail Requirements for ALTA/ACSM Land Title Surveys, jointly established by ALTA and NSPS, and includes items 1, 2, 3, 4, 6 (b), 7 (b) (1), 8, 9, 11 (a), 13, and 14 of Table A thereof. The field work was completed on October 13, 2011.

David J. Surdukan
DAVID J. SURDUKAN
R.P.L.S. No. 4613

[Signature]
Date



LOCATION MAP