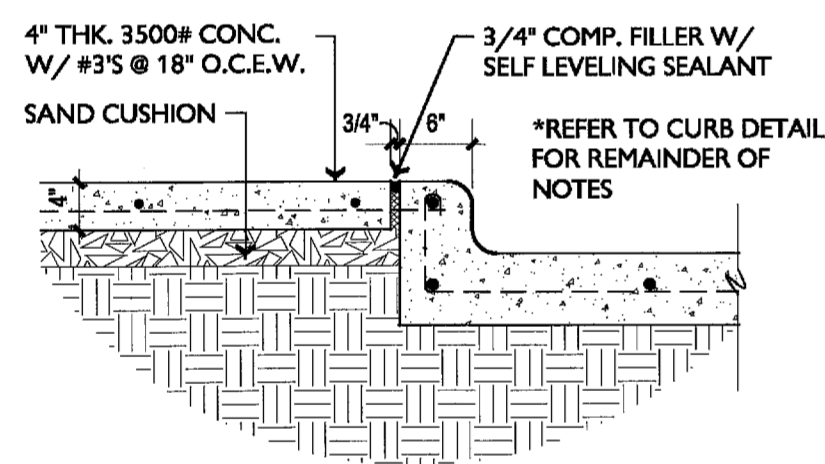
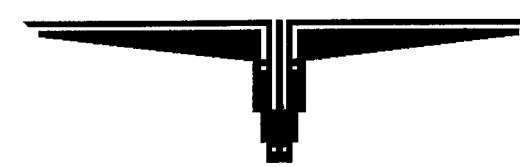


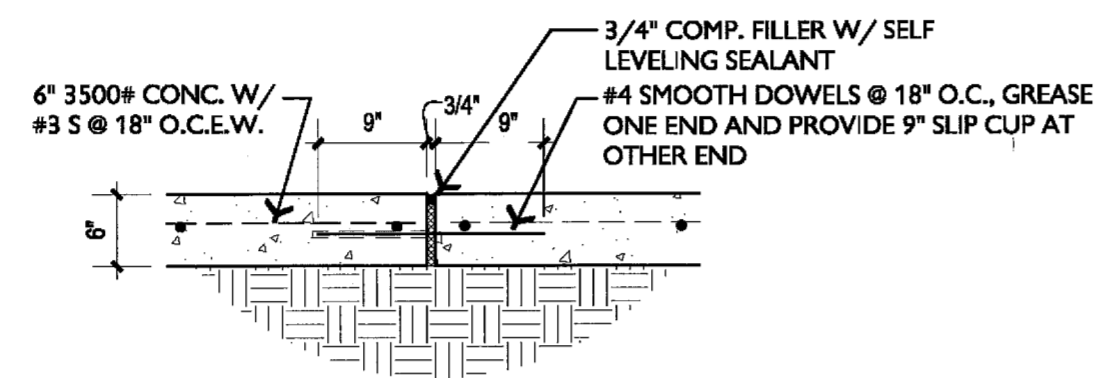
09 NOT USED
SCALE:



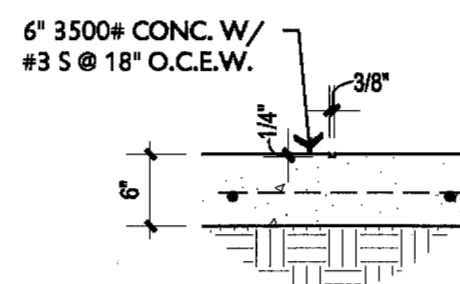
05 CURB DETAIL AT SIDEWALK
SCALE: 3/4" = 1'-0"



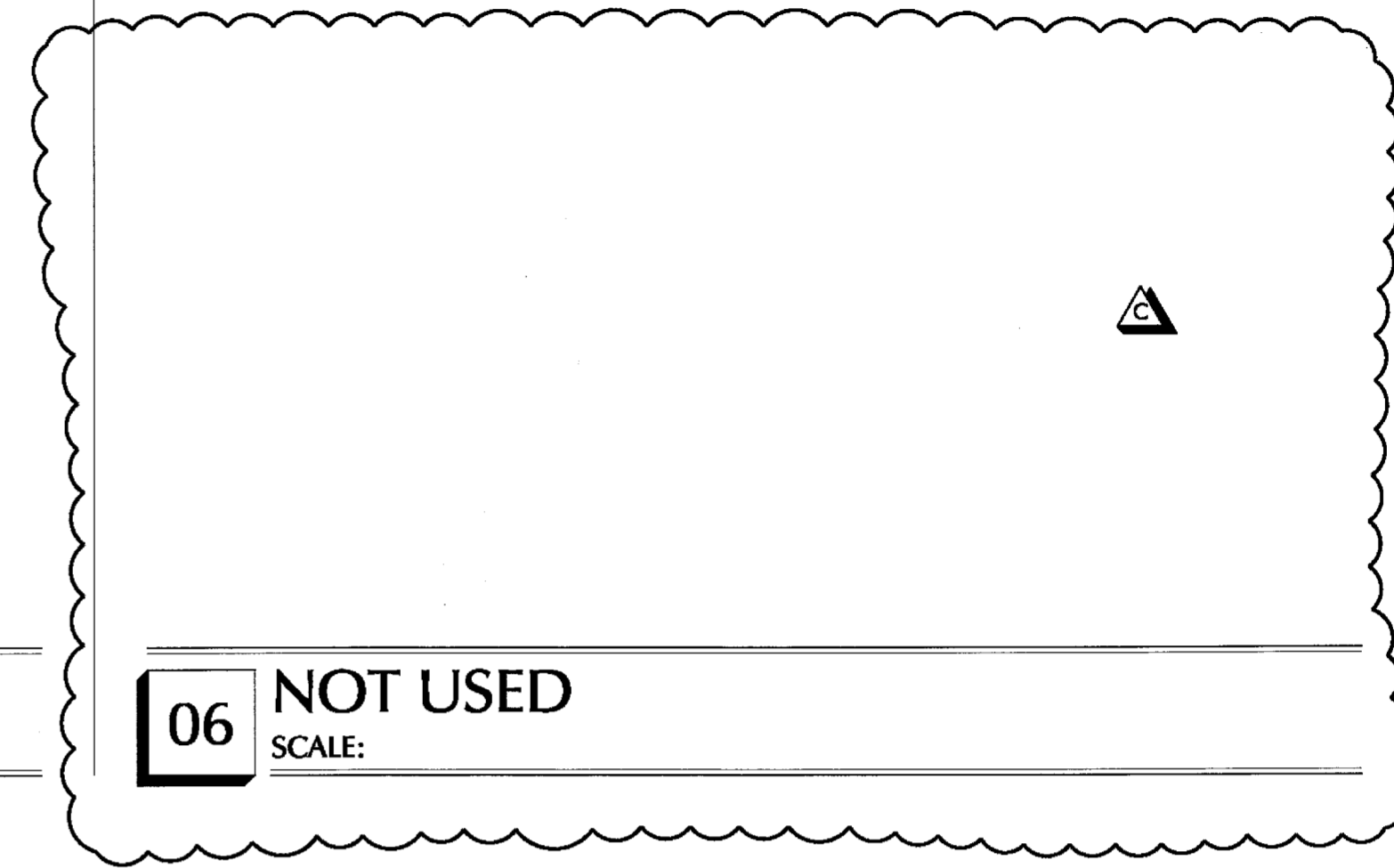
02 NOT USED
SCALE:



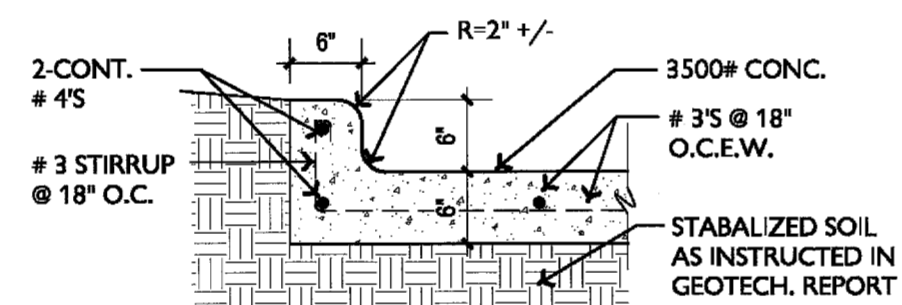
08 EXPANSION JOINT AT DRIVE
SCALE: 3/4" = 1'-0"



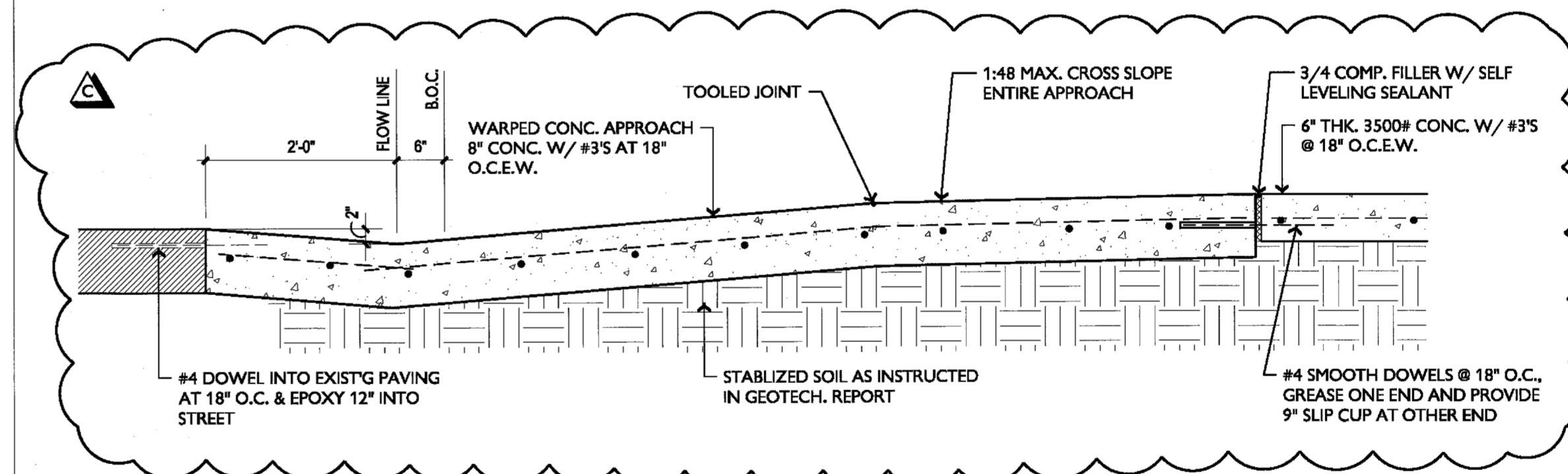
07 CONTROL JOINT AT DRIVE
SCALE: 3/4" = 1'-0"



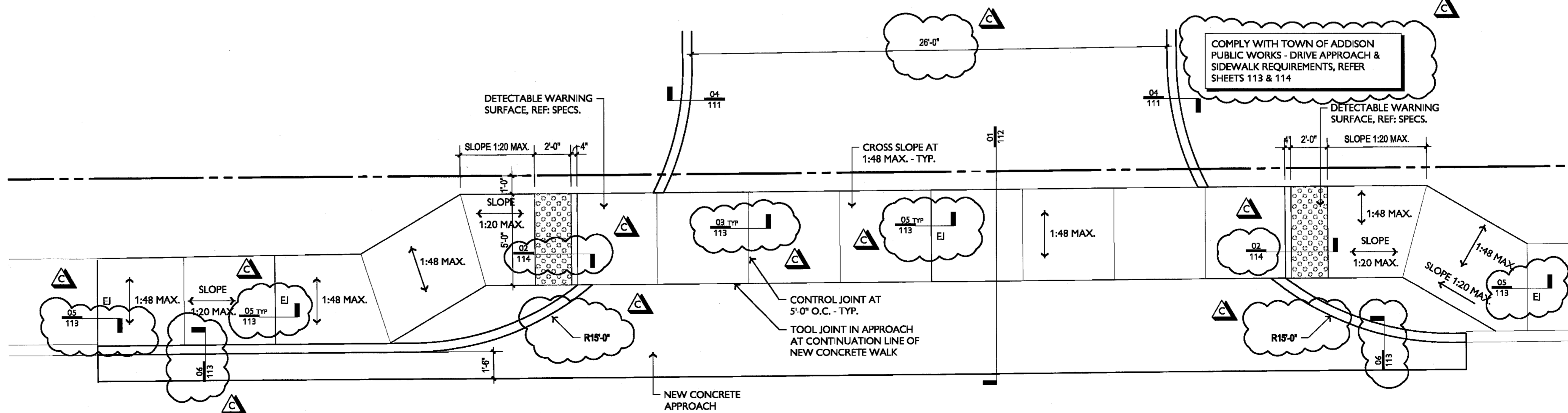
06 NOT USED
SCALE:



04 CURB DETAIL
SCALE: 3/4" = 1'-0"



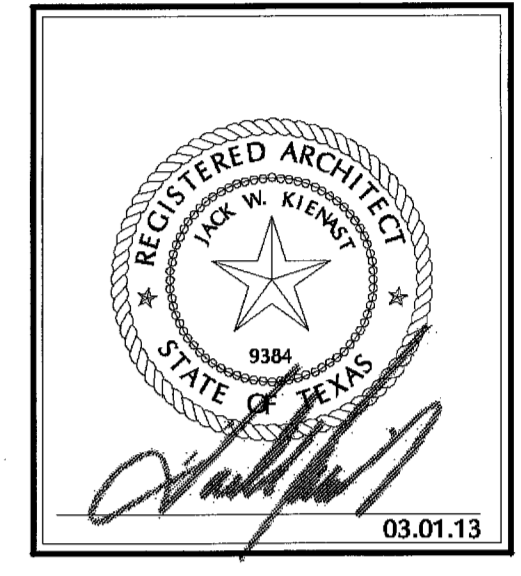
03 PAVING DETAIL AT APPROACH
SCALE: 3/4" = 1'-0"



01 LARGE SCALE ENTRY DRIVE
SCALE: 1/4" = 1'-0"

**ALEXANDER
KIENAST
SCHNITZ**

ARCHITECTURE &
INTERIOR DESIGN
13601 PRESTON RD, SUITE 107W
DALLAS, TX 75240
P: 972.233.3506
F: 972.233.3525
Email: alexander@alexander.com
Web: www.alexander.com



REVISIONS

REVISIONS PER CITY COMMENTS	DATE
	03.01.13

DATE: 01.28.13
PROJECT NO: 1220
ISSUED FOR: PERMIT, PRICING & CONSTRUCTION

All drawings & written materials appearing herein constitute original unpublished work, & may not be duplicated, used or disclosed without written consent of ALEXANDER + KIENAST + SCHNITZ, LLC.

GREEN BANK
BANK SUSTAINABLY

Dallas North Tollway Branch
16771 Dallas Parkway
Addison, TX 75001

SITE PAVING DETAILS

111

J:\dwg\2012\1220 - Greenbank, Dallas North Tollway\Sheets\00 - Site\111 SITE PAVING DETAILS.dwg Mar 01, 2013 03:42pm AKS-112-rlc