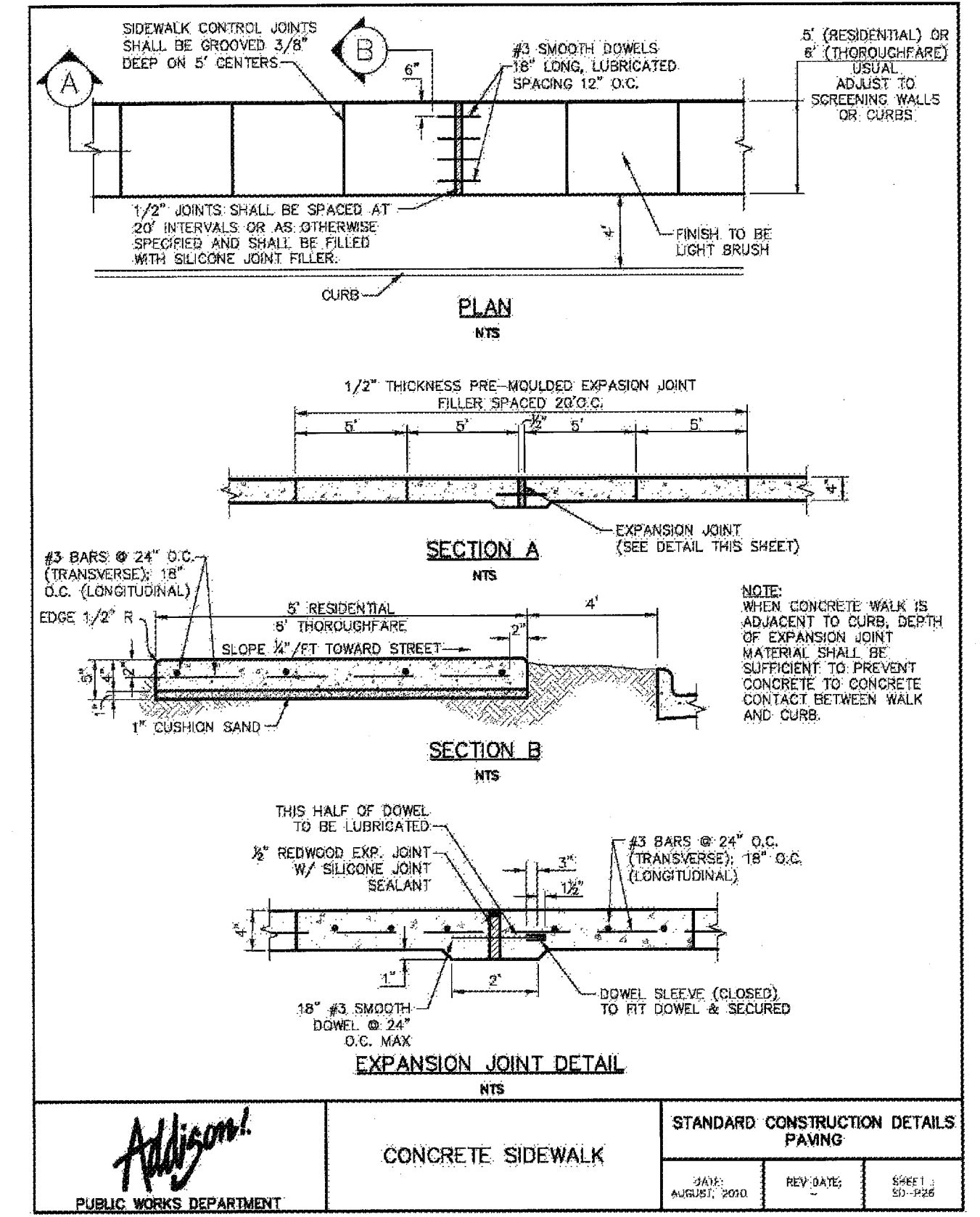
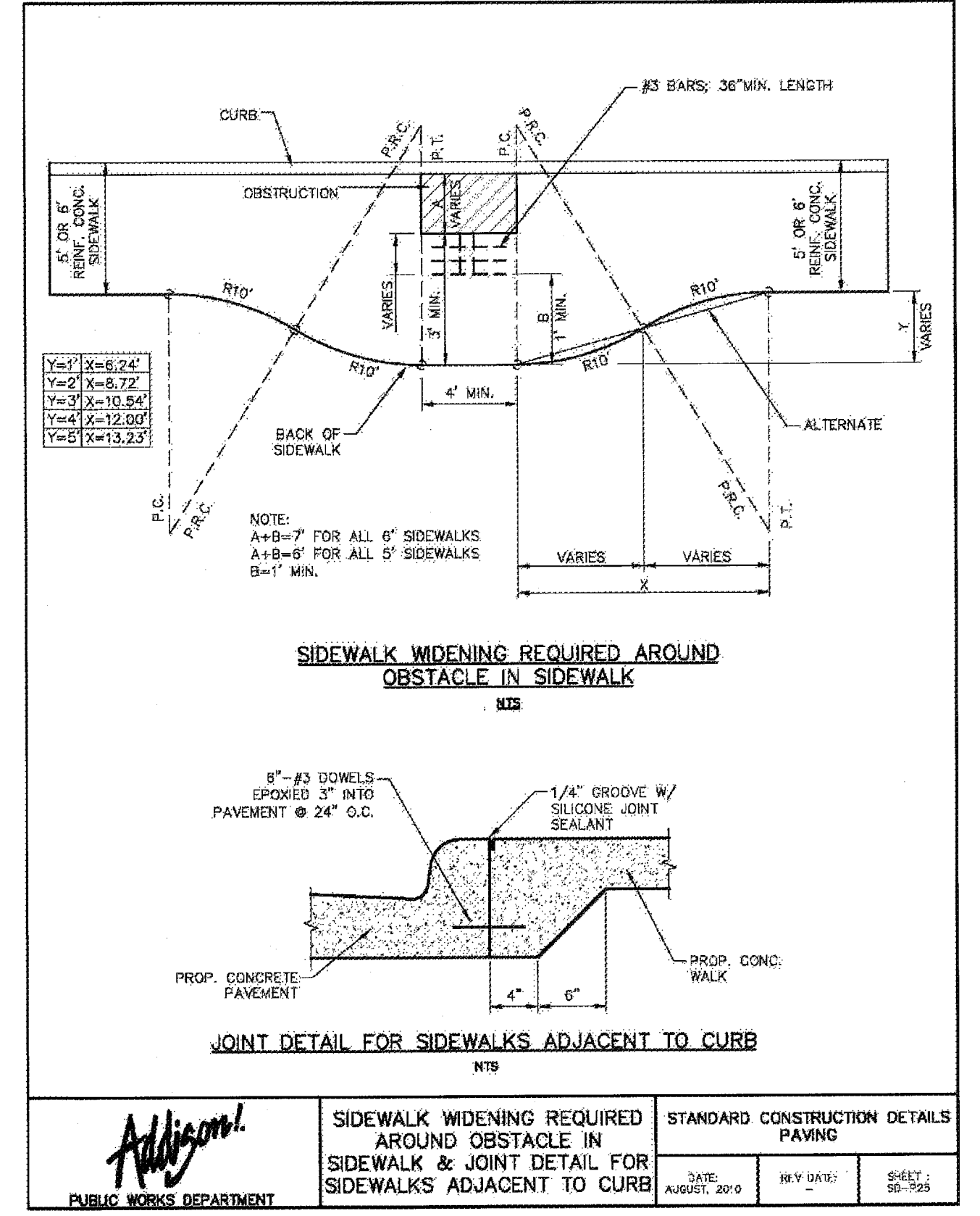


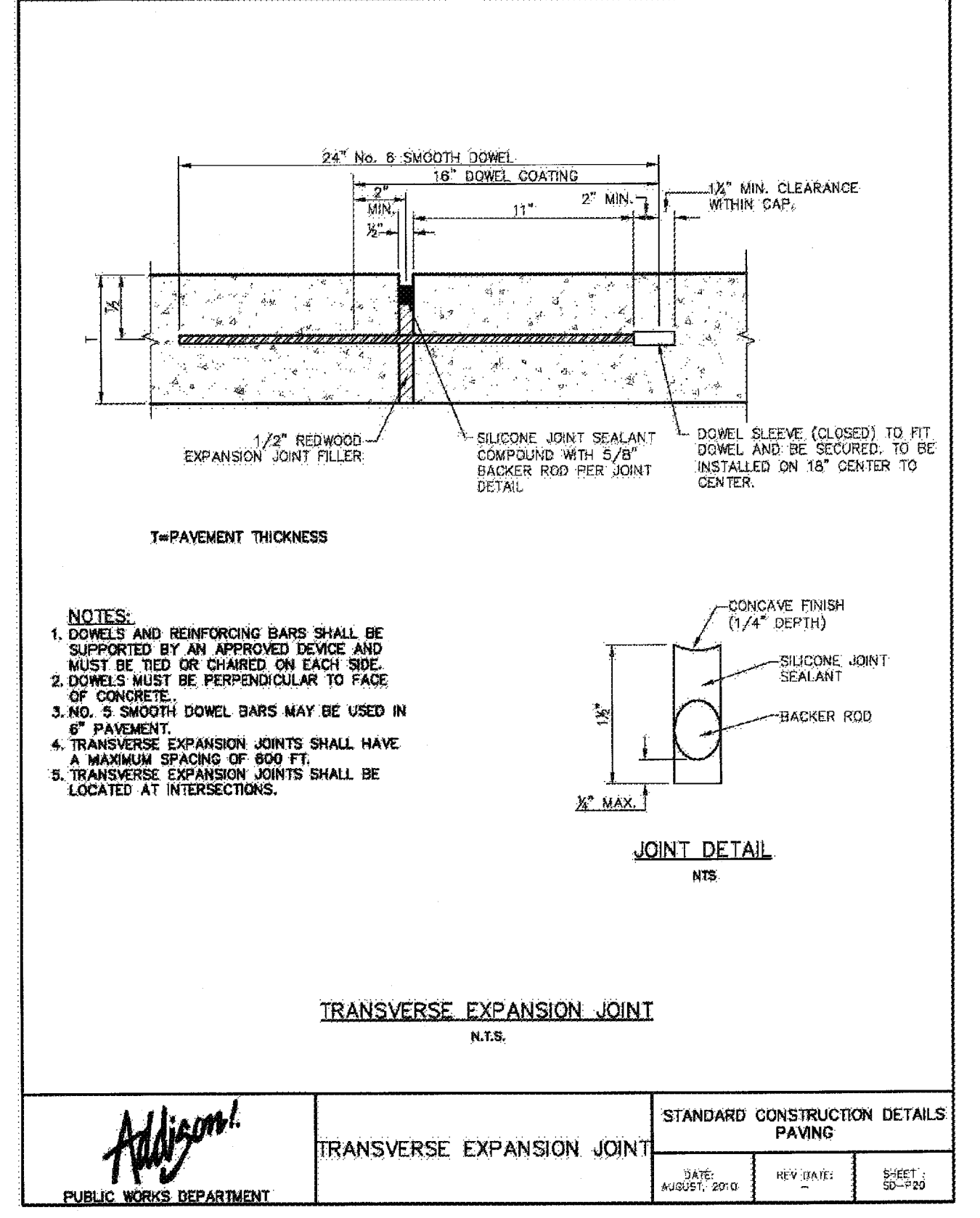
**08 CONCRETE SIDEWALK DETAILS**  
SCALE:



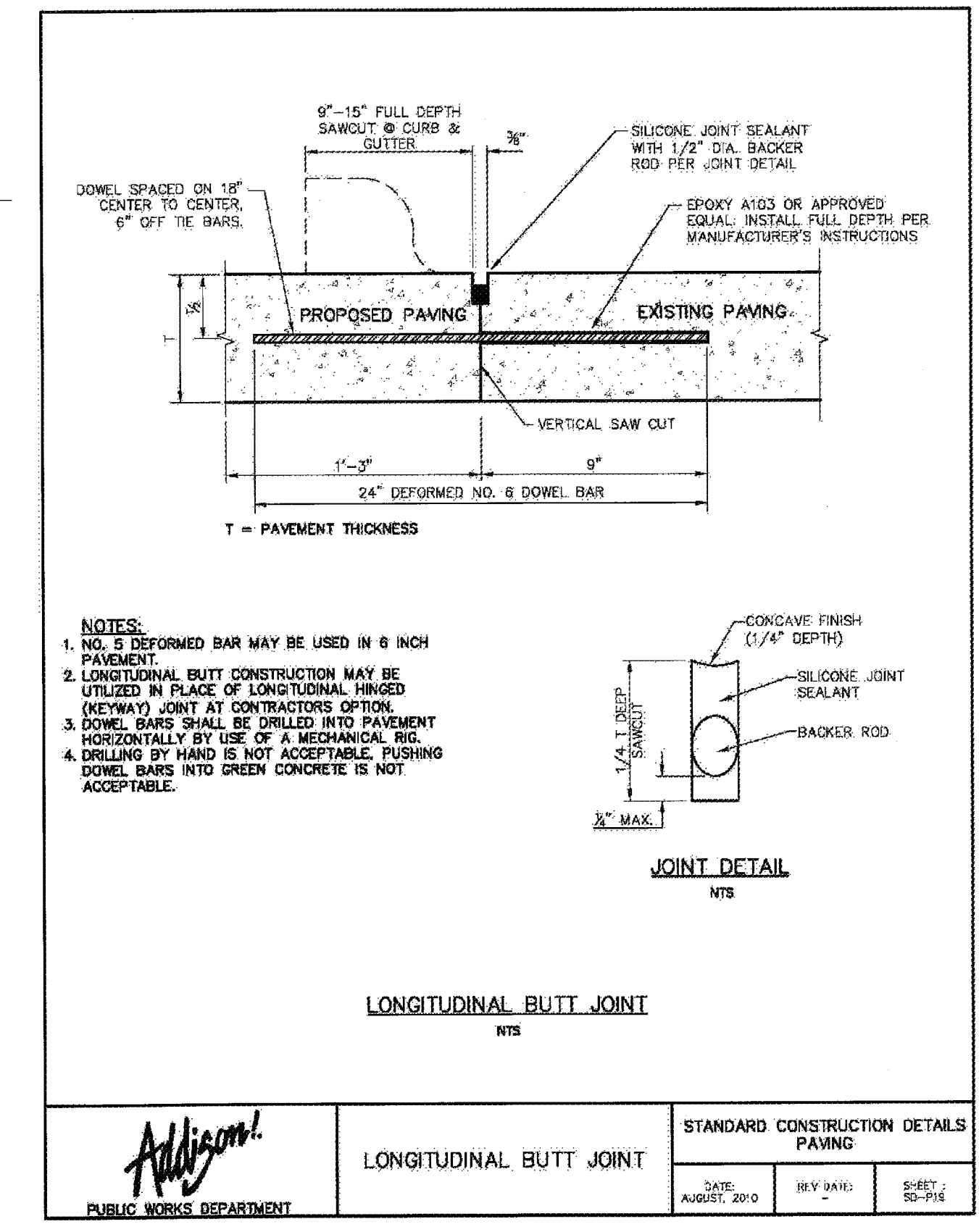
**07 CONCRETE SIDEWALK DETAILS**  
SCALE:



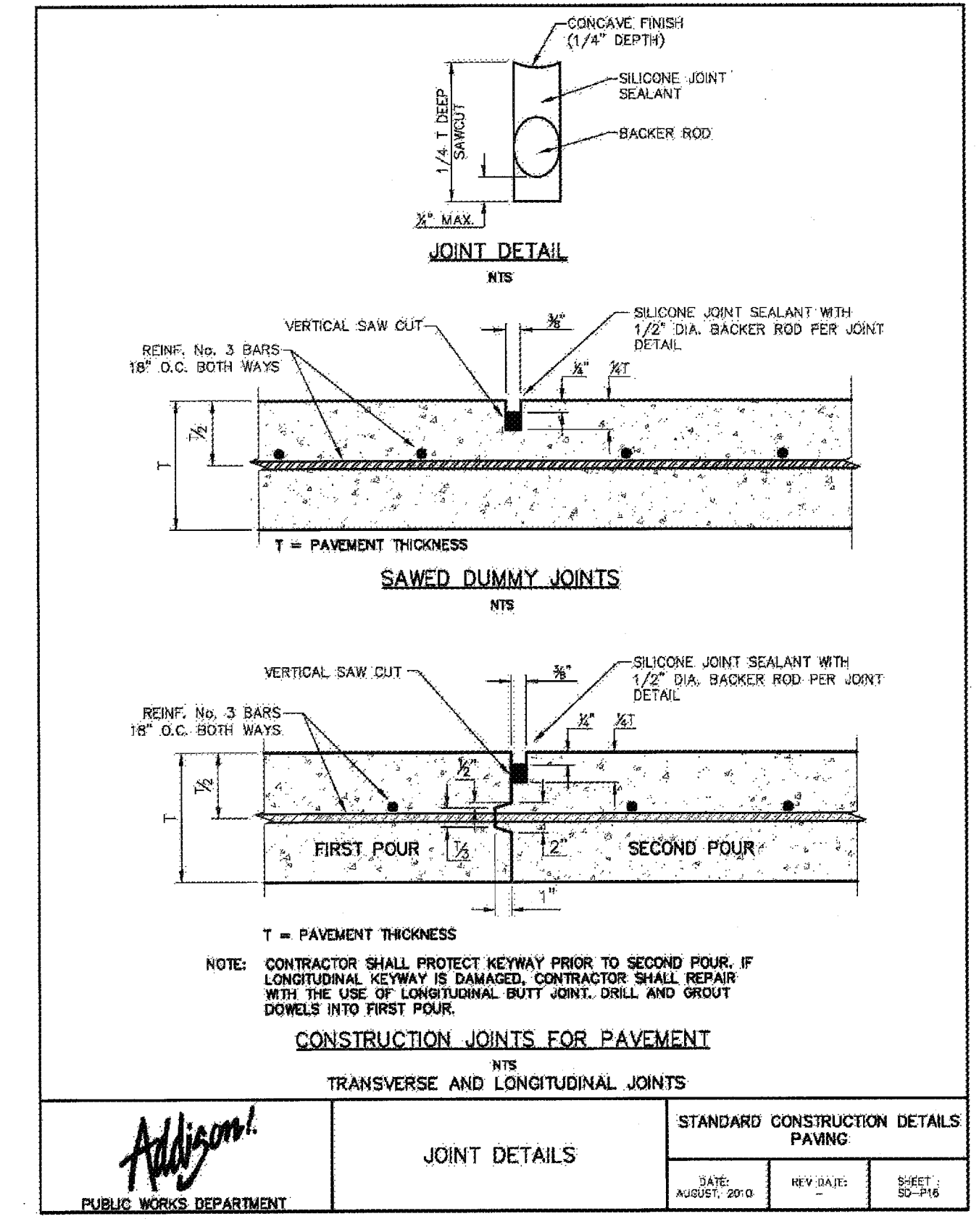
**06 SIDEWALK DETAIL**  
SCALE:



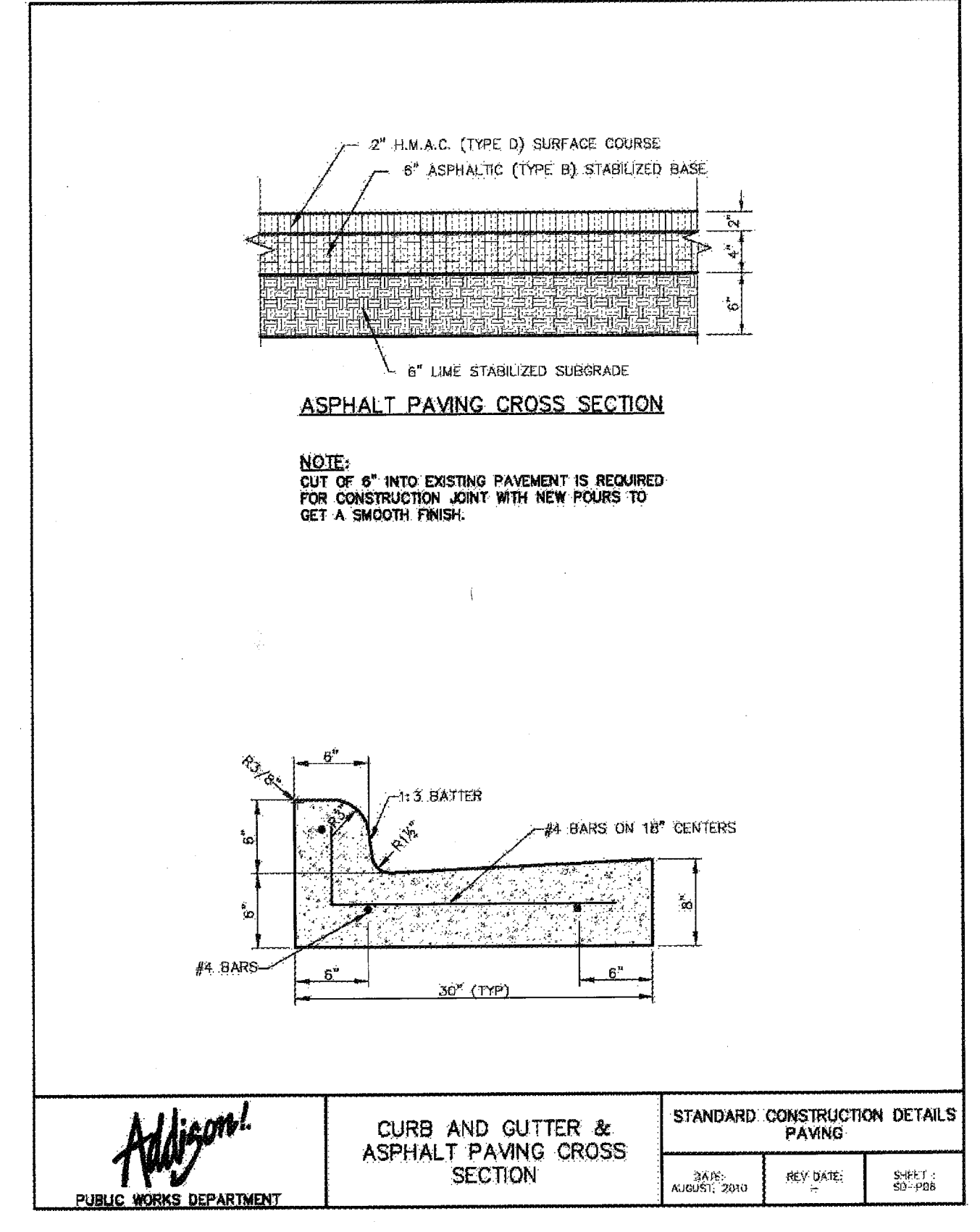
**05 EXPANSION JOINT DETAIL**  
SCALE:



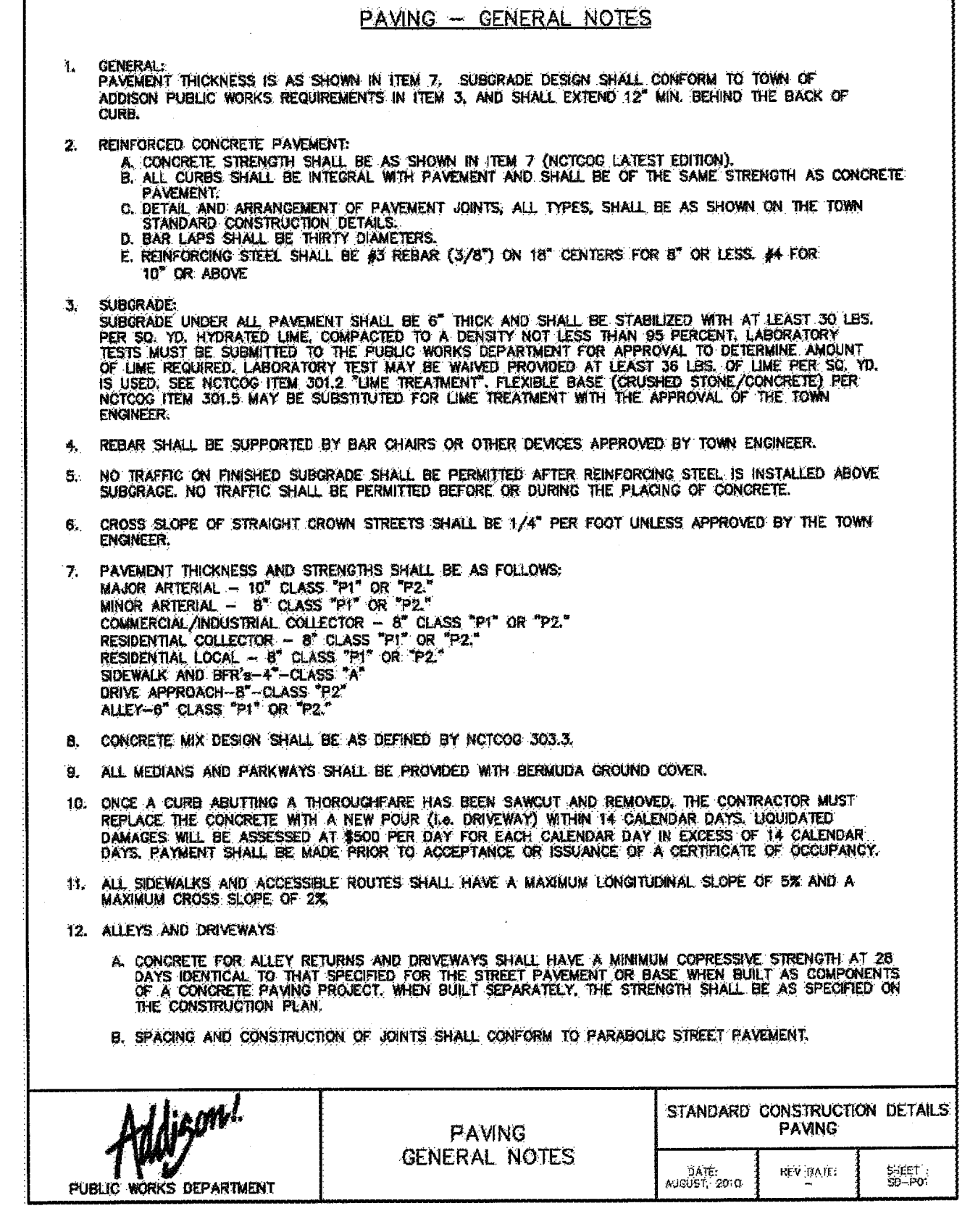
**04 BUTT JOINT DETAIL**  
SCALE:



**03 JOINT DETAILS**  
SCALE:



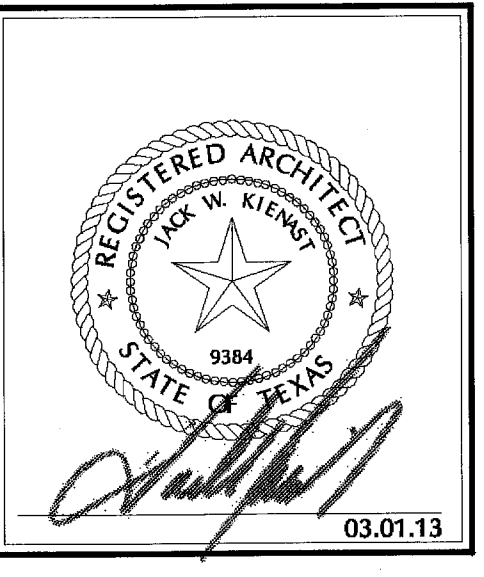
**02 CURB & GUTTER PAVING SECTION**  
SCALE:



**01 PAVING GENERAL NOTES**  
SCALE:



ARCHITECTURE & INTERIOR DESIGN  
13601 PRESTON RD, SUITE 107W  
DALLAS, TX 75240  
P: 972.233.3506  
F: 972.233.3525  
Email: akstevens@akstevens.com  
Web: www.akstevens.com



REVISIONS  
REVISIONS PER CITY COMMENTS  
03.01.13

DATE: 01.28.13  
PROJECT NO:  
1220  
ISSUED FOR:  
PERMIT, PRICING & CONSTRUCTION

**GREEN BANK**  
BANK SUSTAINABLY  
Dallas North Tollway Branch  
16771 Dallas Parkway  
Addison, TX 75001

ADDISON ROW PAVING DETAILS  
NEW SHEET

U:\dmg\2012\1220 - Greenbank Dallas North Tollway\Sheets\100 - Site\113 City Standard Const Dbl.dwg Mer 01, 2013 03:43pm AKS-12-PC