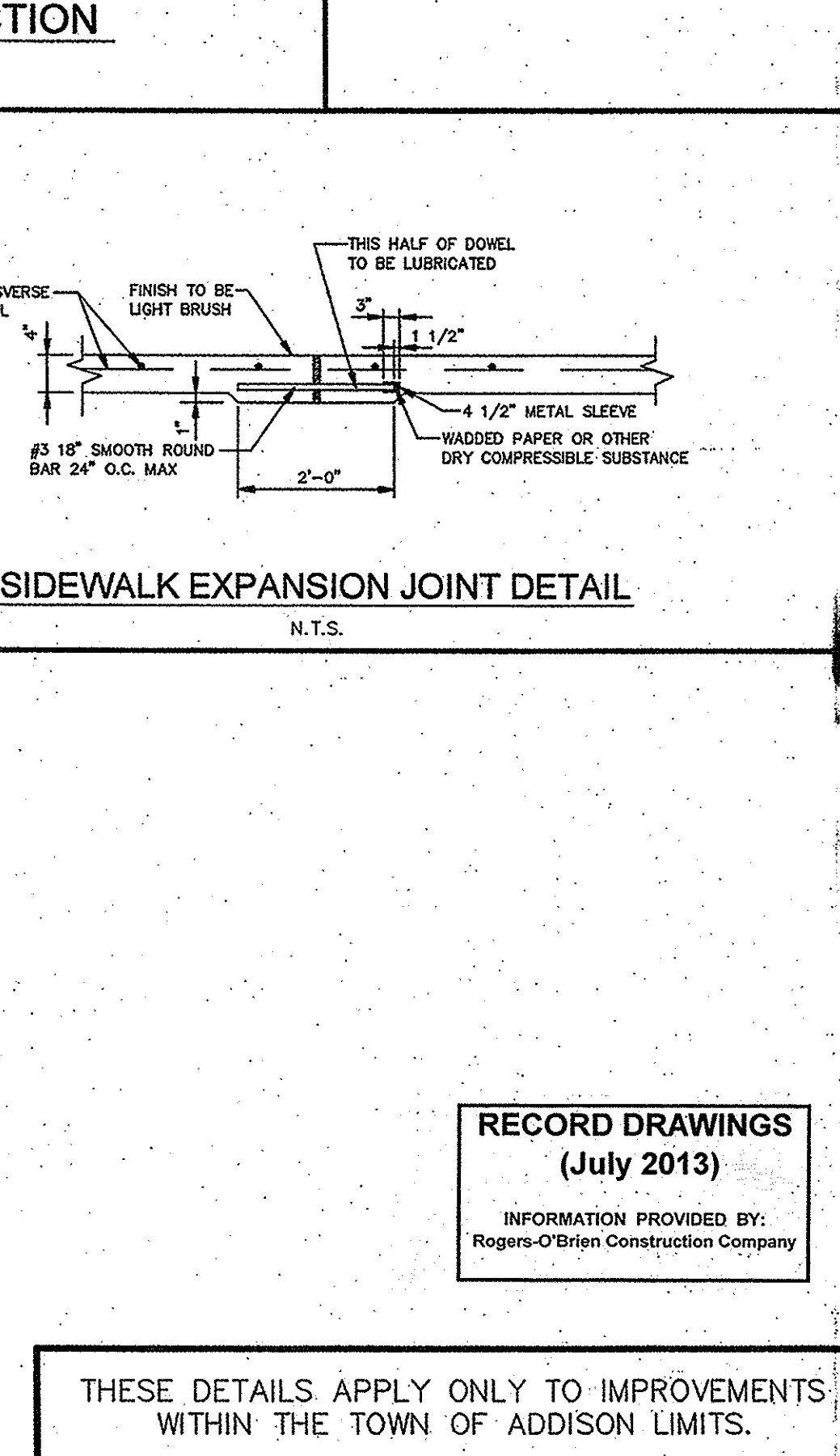
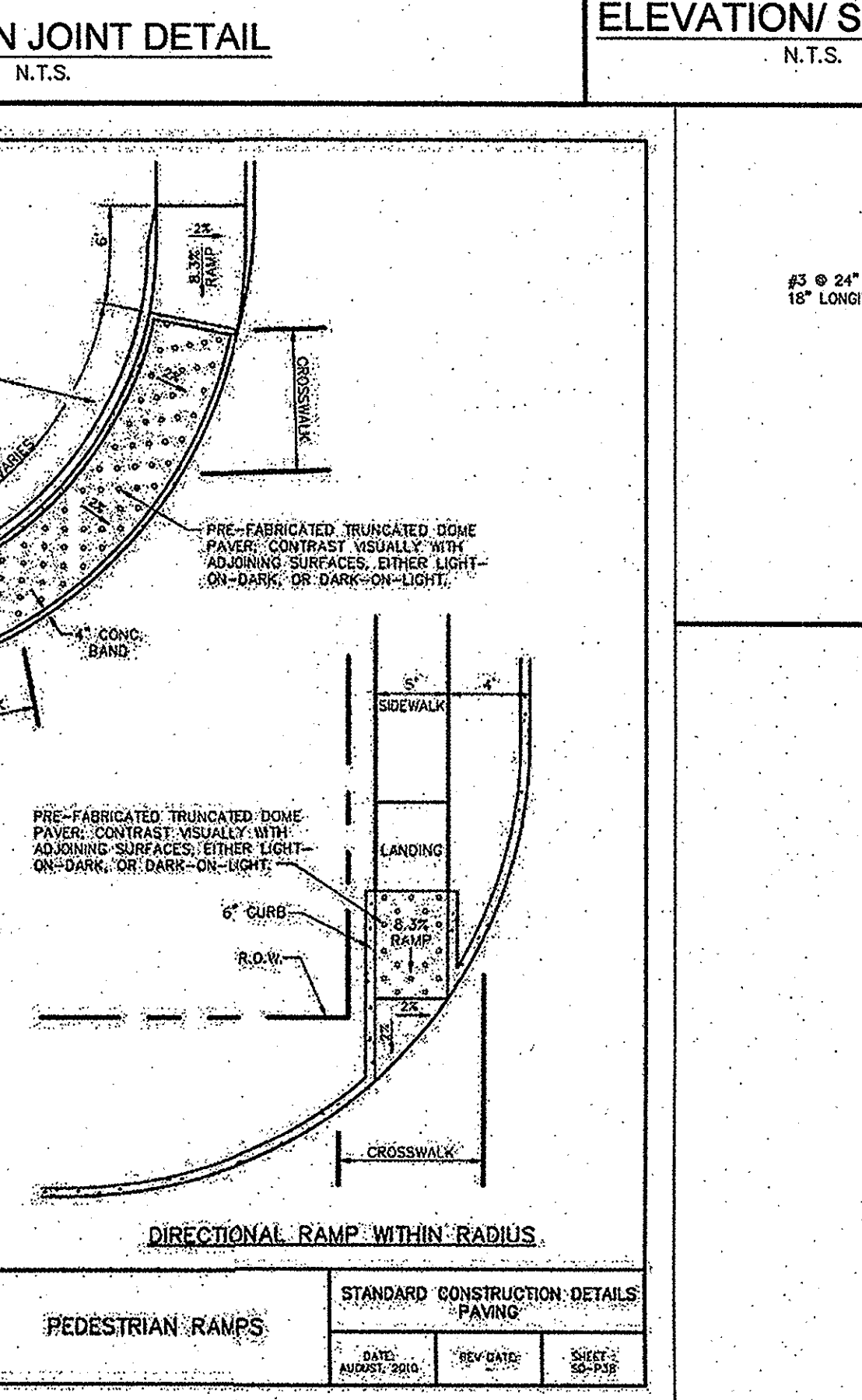
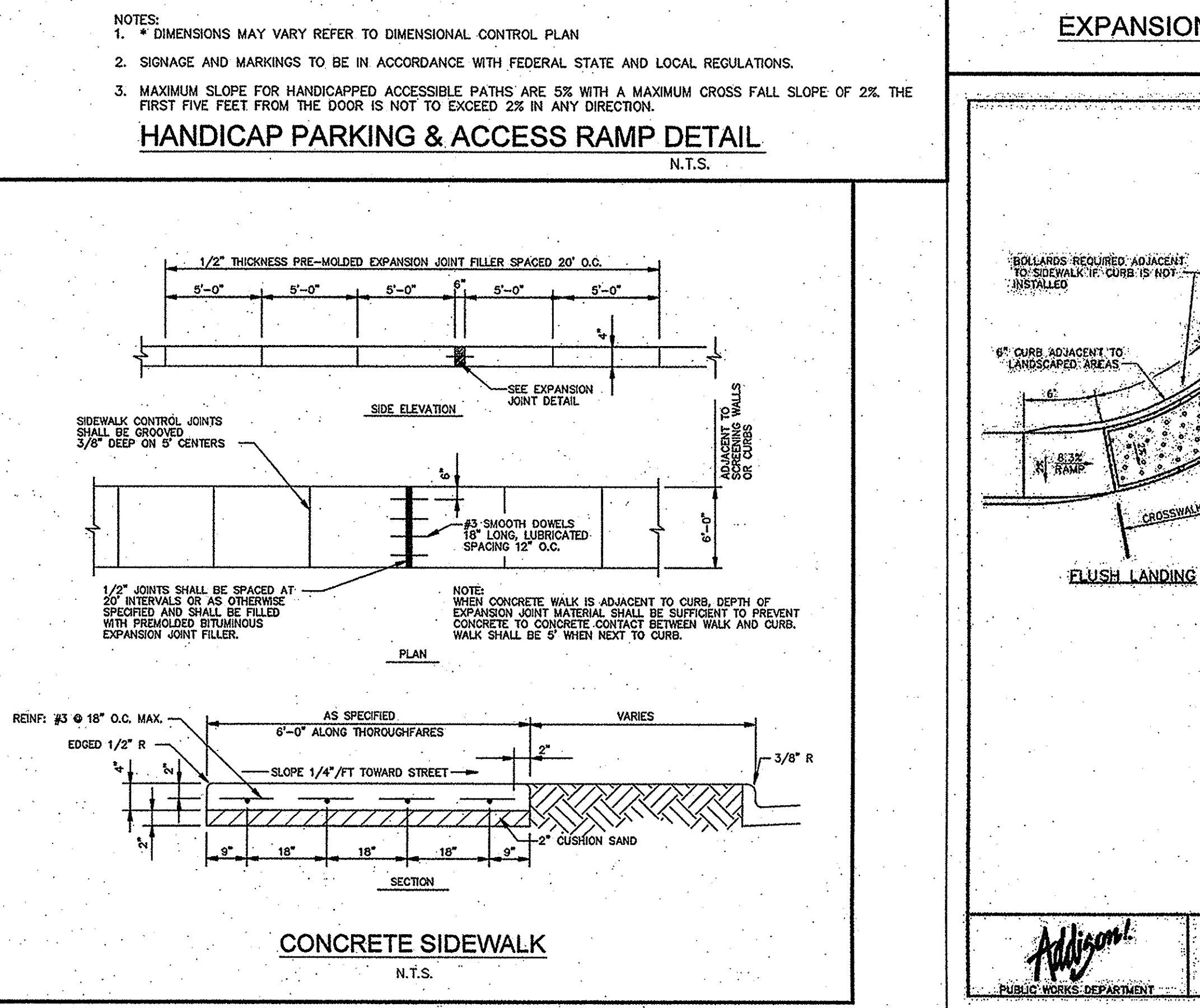
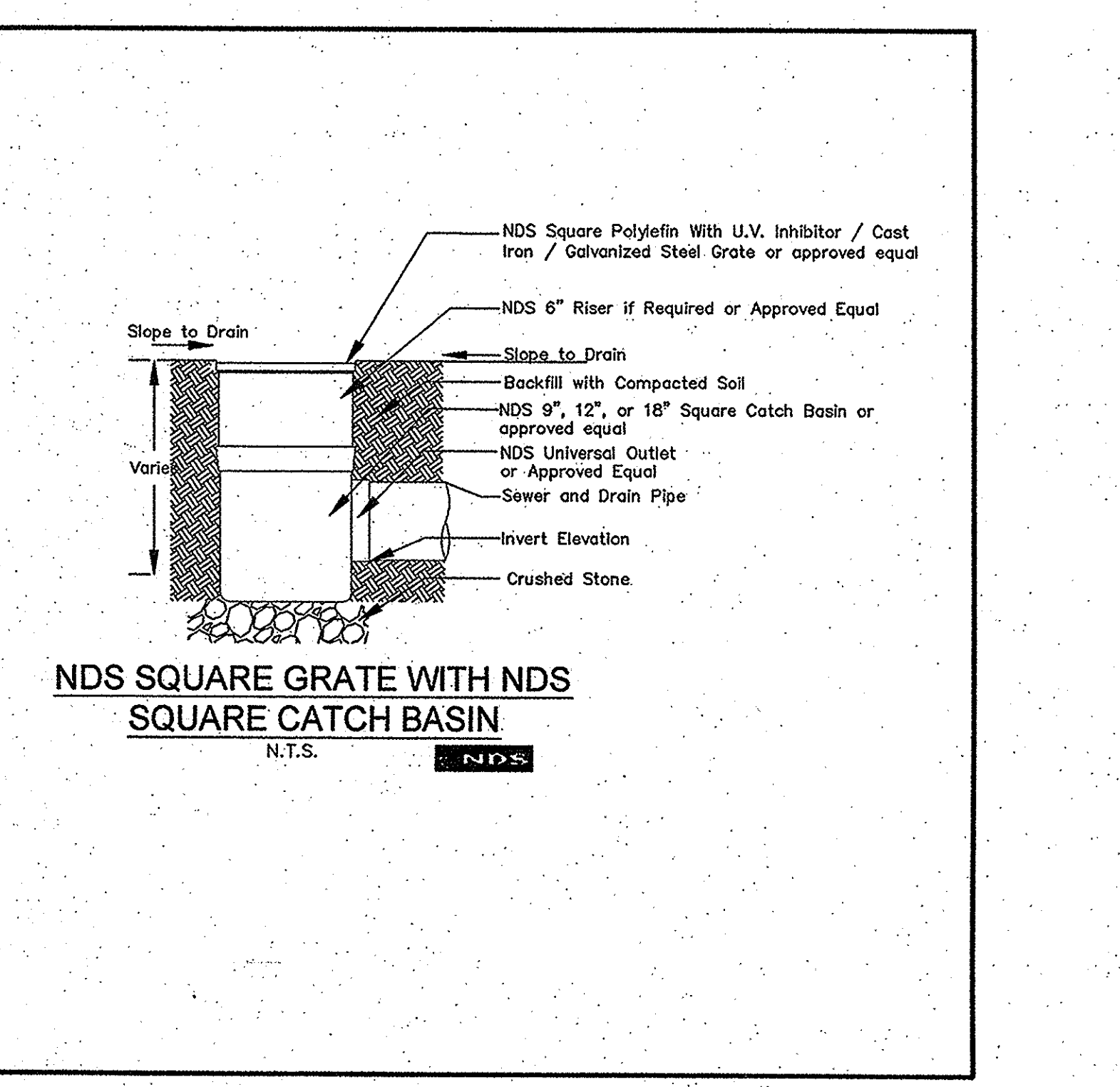
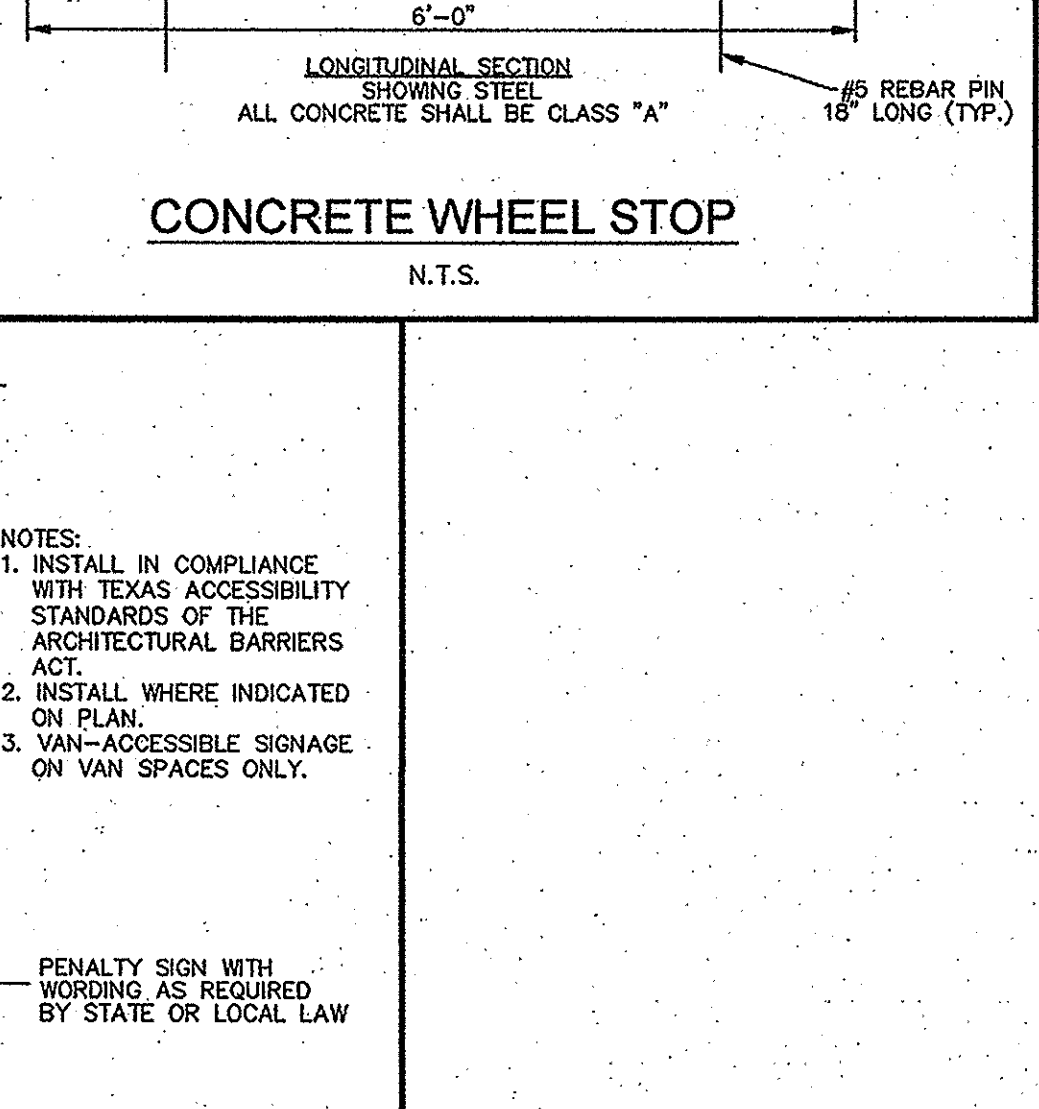
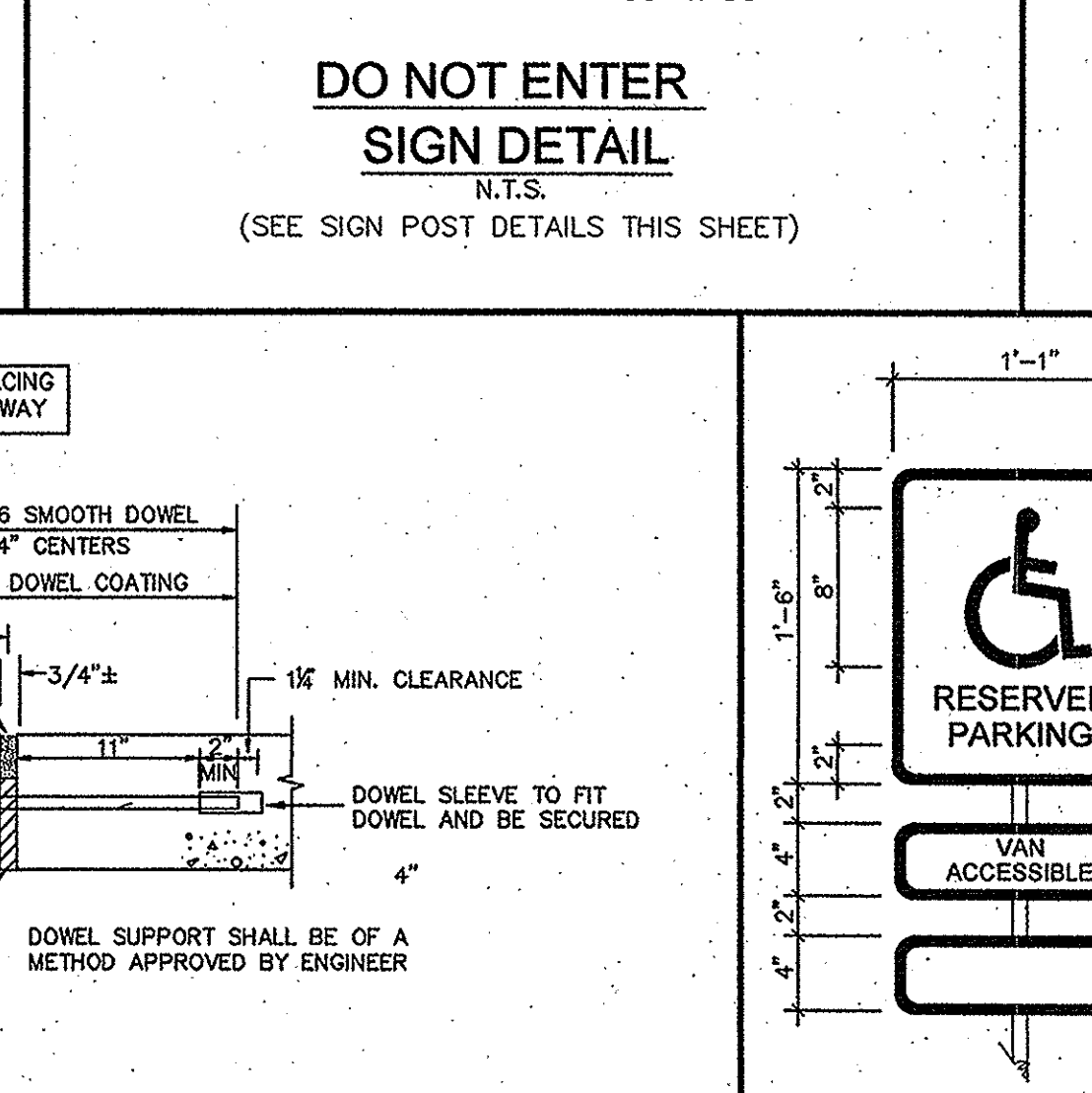
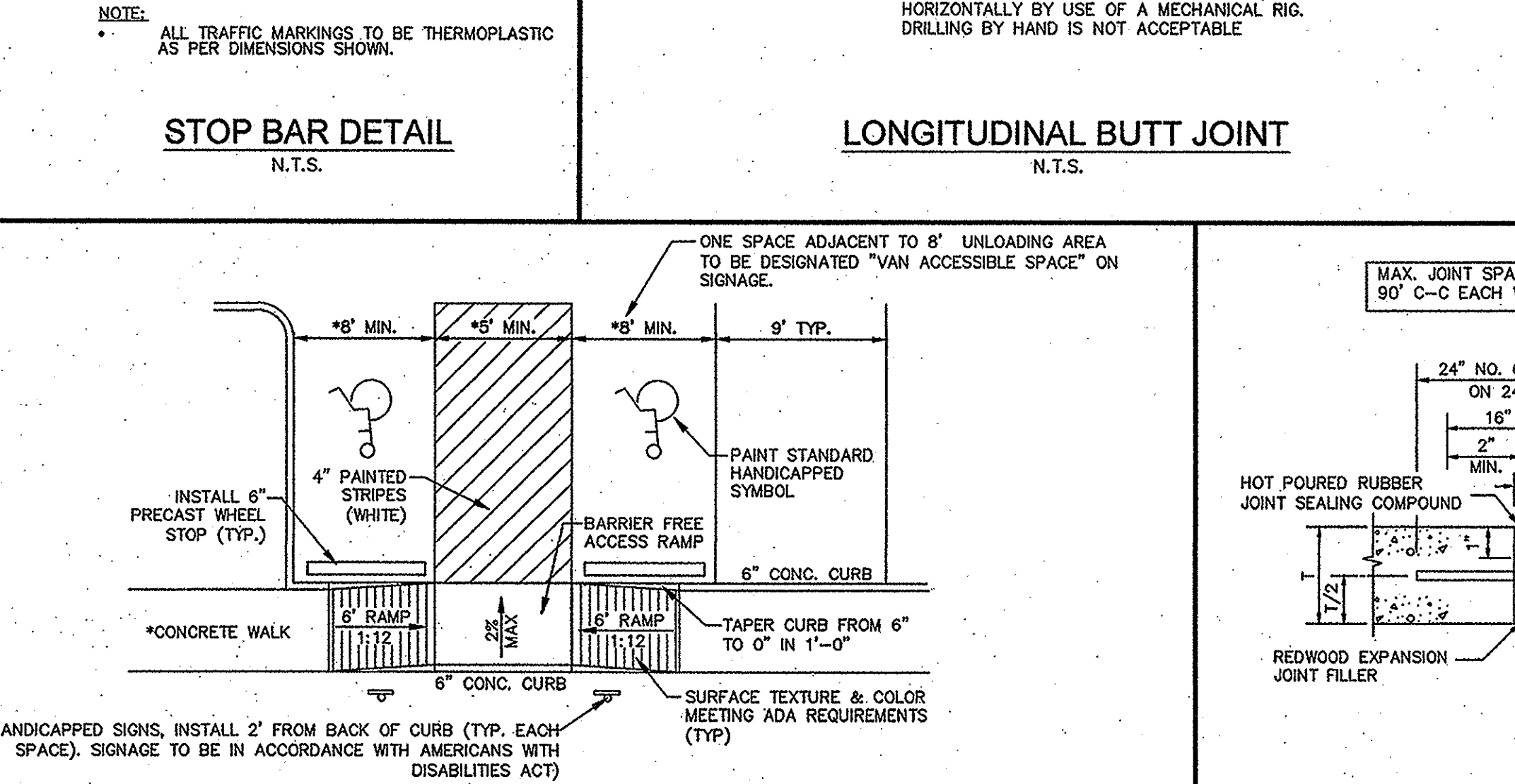
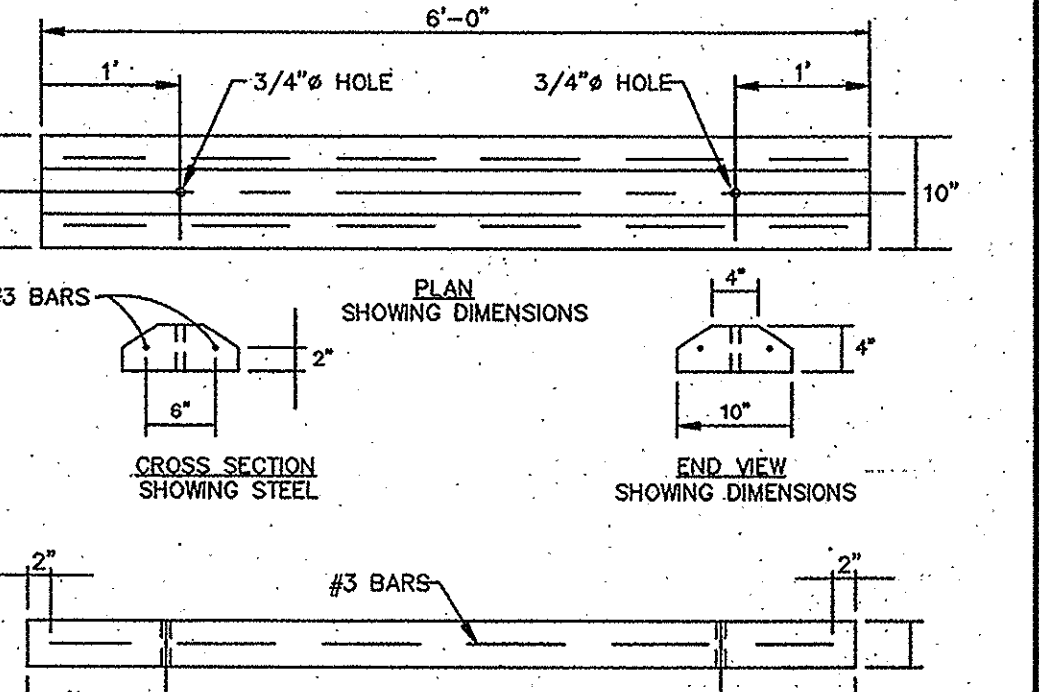
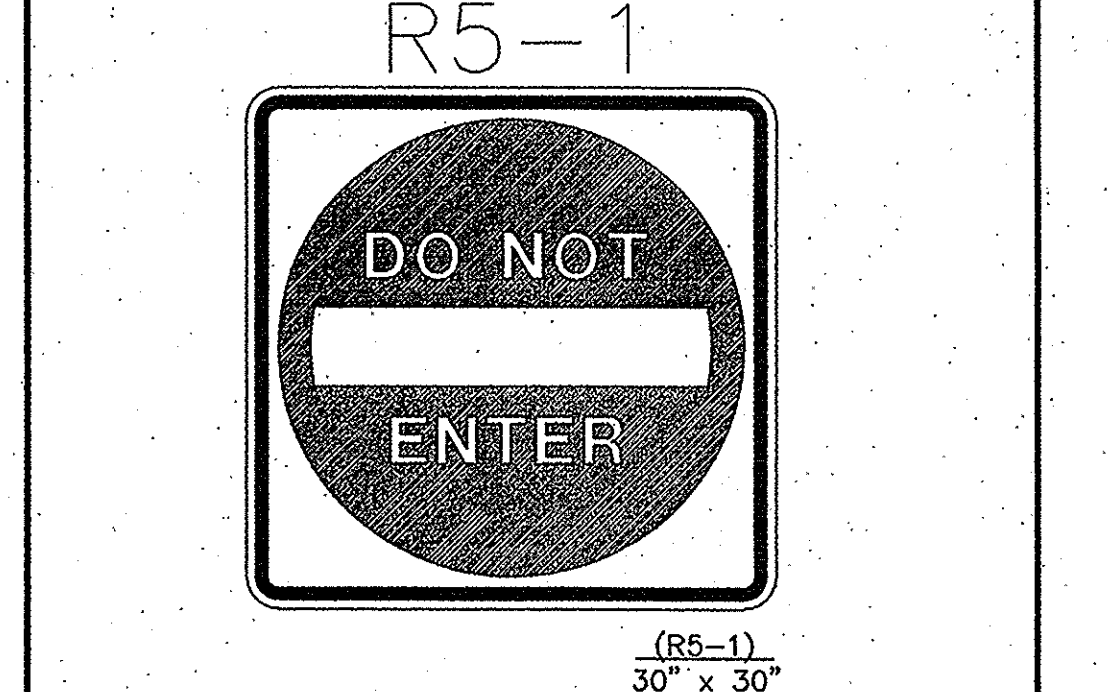
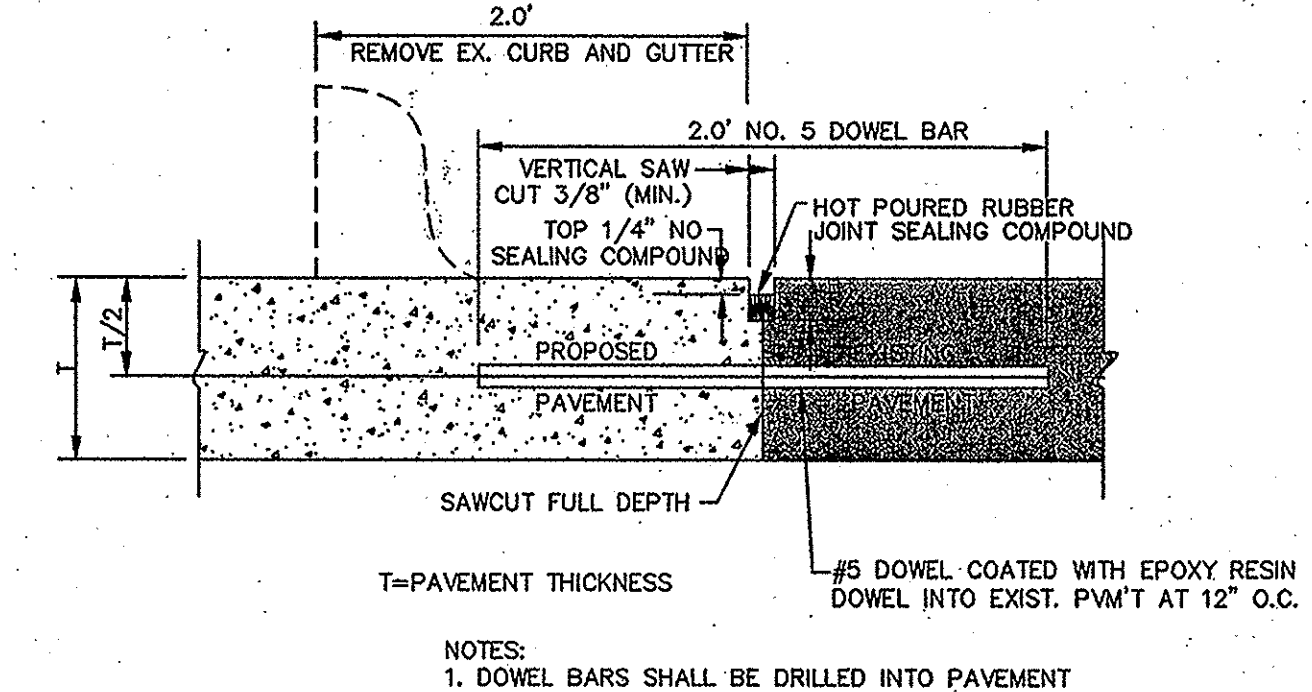
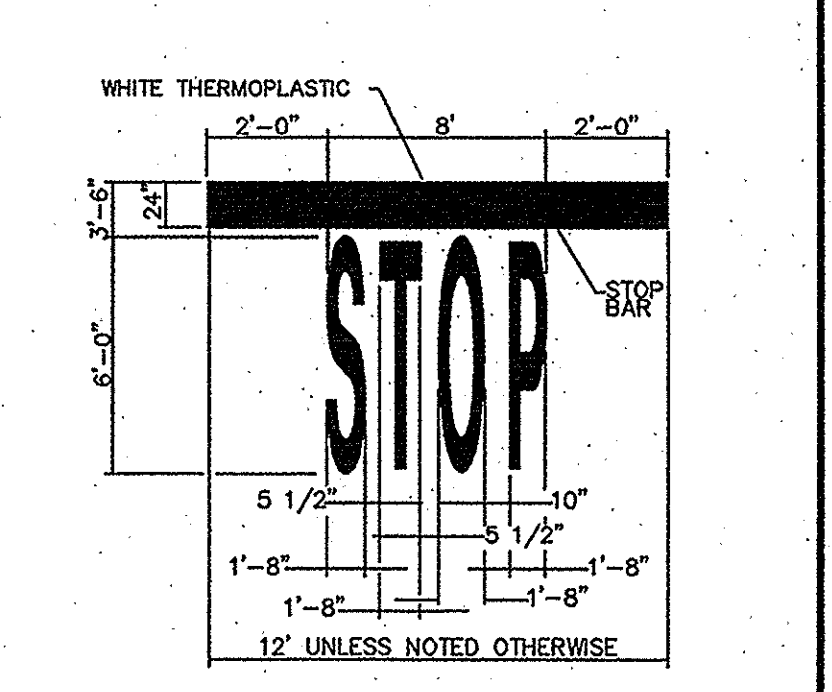


DATE:	REV. DATE:	SHEET:
AUGUST, 2010		30-P41



**RECORD DRAWINGS**  
(July 2013)

INFORMATION PROVIDED BY:  
Rogers-O'Brien Construction Company

THESE DETAILS APPLY ONLY TO IMPROVEMENTS WITHIN THE TOWN OF ADDISON LIMITS.

**Kimley-Horn and Associates, Inc.**  
Tel. No. (972) 335-3579  
Fax No. (972) 335-3778

9750 Glenns Court, Suite 200  
Frisco, Texas 75034  
Firm No. E-928

**METHODIST PAVILION ONE**  
TOWN OF ADDISON, DALLAS COUNTY, TEXAS

**CONSTRUCTION DETAILS**

AS SHOWN  
Designed by: DKK  
Drawn by: DKK  
Checked by: DKK  
Date: 06/22/2012  
Project No.: 0950290

**SHEET C-13**

PLANS  
DESIGNED BY  
CHECKED BY  
DATE  
LAST SAID