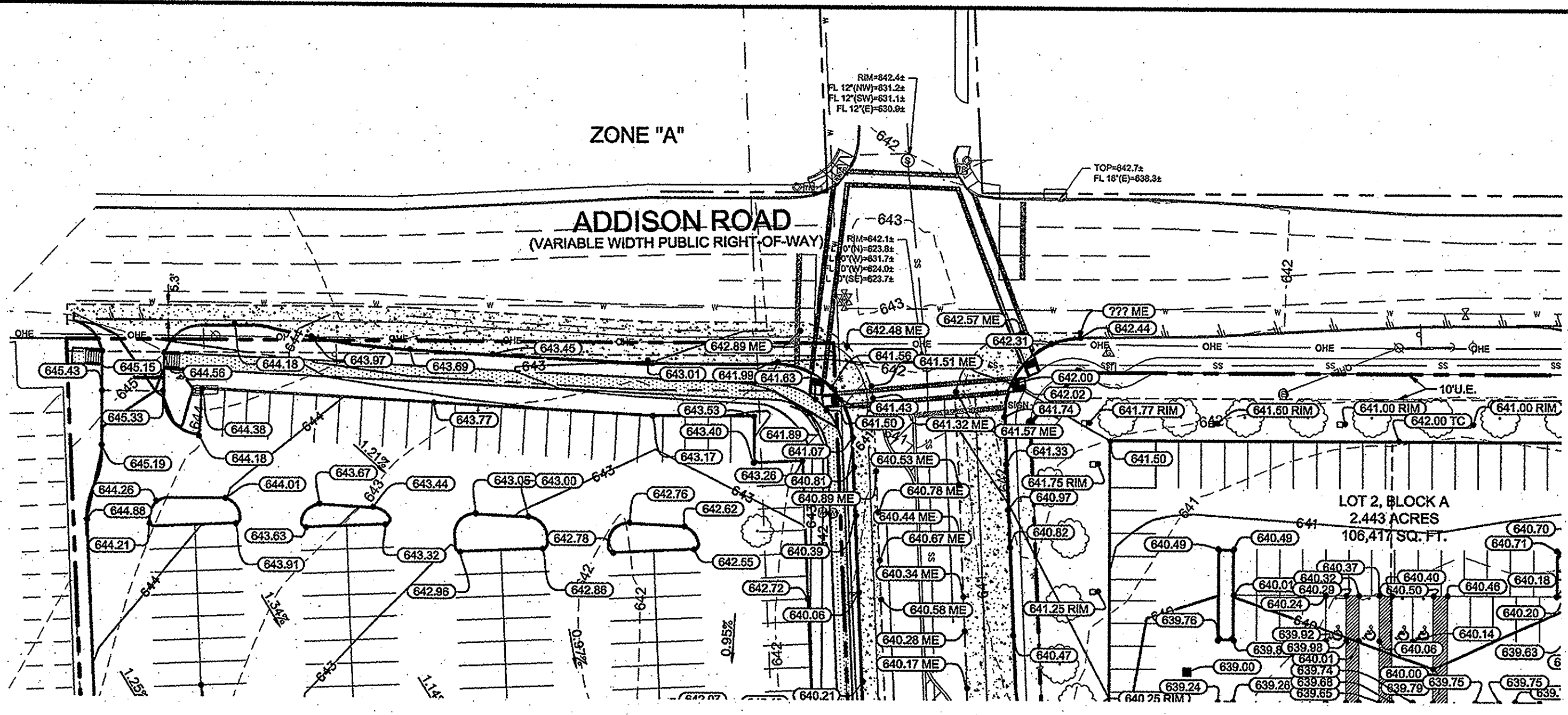
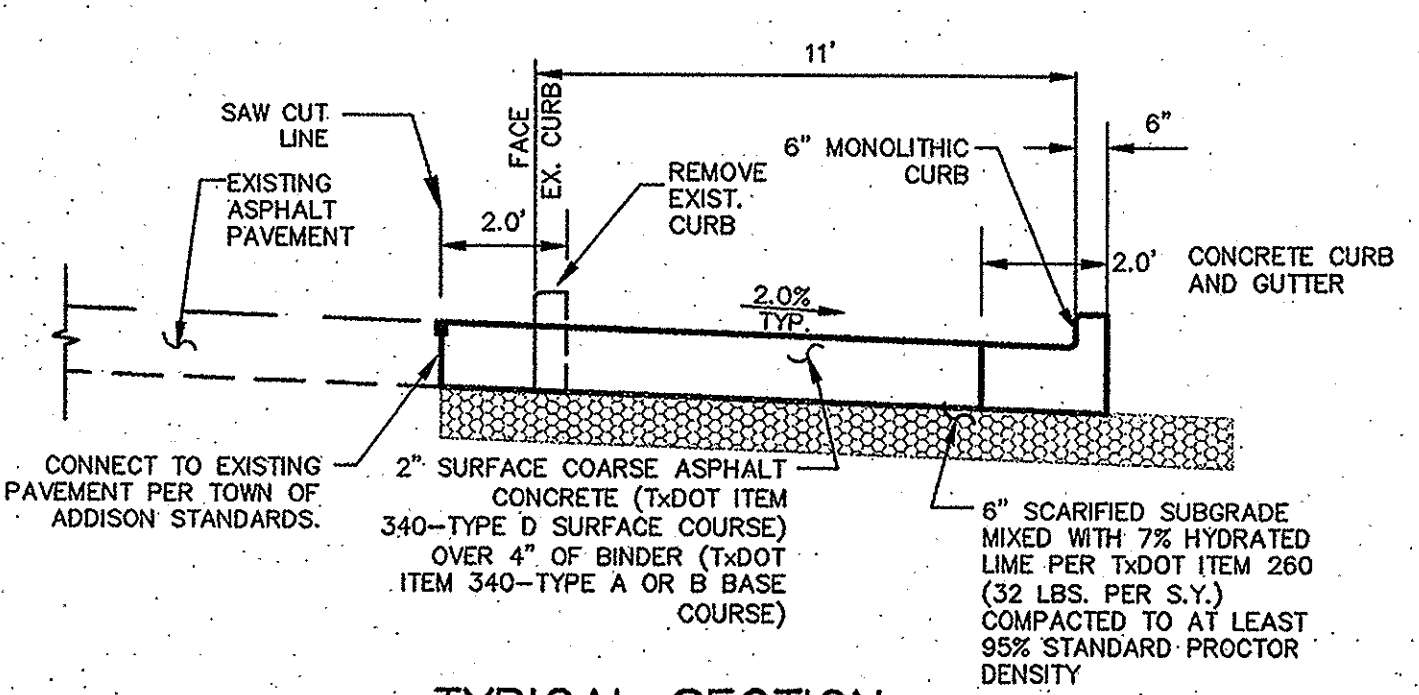


ADDISON ROAD-DIMENSIONS



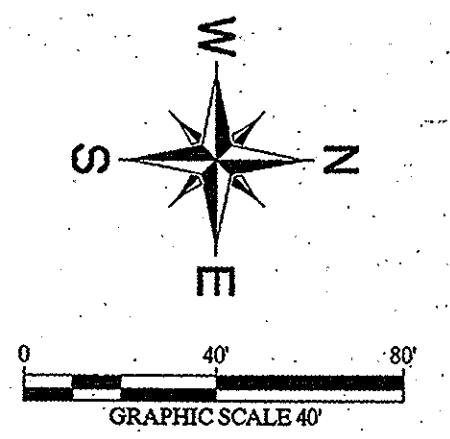
ADDISON ROAD-GRADING



TYPICAL SECTION  
NOT TO SCALE

THE CONTRACTOR SHALL FIELD VERIFY THE HORIZONTAL AND VERTICAL LOCATIONS OF ALL EXISTING UTILITIES PRIOR TO START OF CONSTRUCTION AND SHALL NOTIFY THE CONSTRUCTION MANAGER AND ENGINEER OF ANY CONFLICTS DISCOVERED. CONTRACTOR IS RESPONSIBLE FOR PROTECTING EXISTING UTILITIES (SHOWN OR NOT SHOWN) WITHIN SCOPE OF CONSTRUCTION. IF ANY EXISTING UTILITIES ARE DAMAGED, THE CONTRACTOR SHALL REPLACE THEM AT HIS OWN EXPENSE. CALL 1-800-DIG-TESS AT LEAST 72 HOURS PRIOR TO COMMENCING CONSTRUCTION IN VICINITY.

RECORD DRAWINGS  
(July 2013)  
INFORMATION PROVIDED BY:  
Rogers-O'Brien Construction Company



LEGEND	
---	PROPERTY LINE
---	SETBACK LINE
---	PROPOSED EASEMENT
OP	EXISTING OVERHEAD POWER LINE
CBL	EXISTING CABLE LINE
GAS	EXISTING GAS LINE
W	EXISTING WATER LINE
SS	EXISTING SANITARY SEWER LINE
455	EXISTING MAJOR CONTOUR
453	EXISTING MINOR CONTOUR
455	PROPOSED MAJOR CONTOUR
453	PROPOSED MINOR CONTOUR
---	PROPOSED RETAINING WALL
FL	PROPOSED FIRE LANE
FBR	EXISTING FIBER OPTIC LINE
BFR	BARRIER FREE RAMP (BFR)
SP	EXISTING POWER POLE
*	EXISTING LIGHT POLE
⊙	EXISTING FIRE HYDRANT
⊙	EXISTING STORM MANHOLE
⊙	EXISTING SAN. SWR. MANHOLE
+	EXISTING SIGN
• (ELEV.)	PROPOSED TOP OF PAVEMENT ELEVATION
• (ELEV. ME)	MATCH EXISTING PAVEMENT ELEVATION
→	FLOW ARROW
+	PROPOSED FIRE HYDRANT (FH)
+	PROPOSED FIRE DEPARTMENT CONNECTION (FDC)
+	PROPOSED TRANSFORMER LOCATION

PAVING LEGEND	
[Pattern]	2" SURFACE COARSE ASPHALT CONCRETE (TXDOT ITEM 340-TYPE D SURFACE COURSE) OVER 2" LIFTS OF BINDER (TXDOT ITEM 340-TYPE A OR B BASE COURSE), 10" TOTAL

- NOTES**
- ALL DIMENSIONS ARE TO FACE OF CURB, FACE OF BUILDING, OR PROPERTY LINE UNLESS OTHERWISE NOTED.
  - ALL PARKING STALLS SHALL BE 9'x16', UNLESS OTHERWISE NOTED.
  - CONTRACTOR SHALL REFER TO ARCHITECTURAL PLANS FOR EXACT BUILDING FOOTPRINT DIMENSIONS.
  - ALL RADII ARE 2', UNLESS OTHERWISE NOTED.
  - FIRE LANE SHALL BE CONSTRUCTED PER TOWN OF ADDISON FIRE DEPARTMENT STANDARDS AND MARKED PER TOWN SPECIFICATIONS. REFER TO DETAILS FOR ADDITIONAL INFORMATION.
  - PAVEMENT DESIGN DATA SHOWN BY REFERENCE ONLY. PAVEMENT TO BE PER GEOTECH REPORT PROJECT NO. 080536 DATED APRIL 23, 2009 BY ALPHA TESTING.
  - CONTRACTOR SHALL REFER TO ARCHITECTURAL PLANS AND FINAL GEOTECH REPORT FOR BUILDING SUB-GRADE PREPARATION REQUIREMENTS.
  - CONTRACTOR TO VERIFY T.A.S. COMPLIANCE. FOR ANY QUESTIONS CONTACT CIVIL ENGINEER IMMEDIATELY.
  - CONTRACTOR TO VERIFY ENGINEERING PLANS MATCH ARCHITECTURAL PLANS BEFORE CONSTRUCTION STAKING.
  - REFER TO LANDSCAPE PLANS FOR ADDITIONAL INFORMATION.
  - REFER TO SITE LIGHTING PLANS FOR ALL LIGHTING LOCATIONS, SPECIFICATIONS, AND PHOTOMETRIC DETAILS.
  - REFER TO BUILDING ELEVATION PLANS FOR ALL BUILDING SIGNAGE LOCATIONS AND DETAILS.
  - CONTRACTOR SHALL REFER TO M.E.P. AND LANDSCAPE PLANS FOR CONDUIT PLACEMENT PRIOR TO PAVING.
  - CONTRACTOR TO CONSTRUCT 1/2" EXPANSION JOINT WHERE DRIVEWAYS ABUT BUILDING.
  - ALL ACCESSIBLE PATHWAYS SHALL BE BUILT PER ADA STANDARDS, WITH A MAXIMUM CROSS SLOPE OF 2% AND A MAXIMUM LONGITUDINAL SLOPE OF 5%.
  - JOINTS IN CONCRETE PAVING SHOULD NOT EXCEED 15 FT.

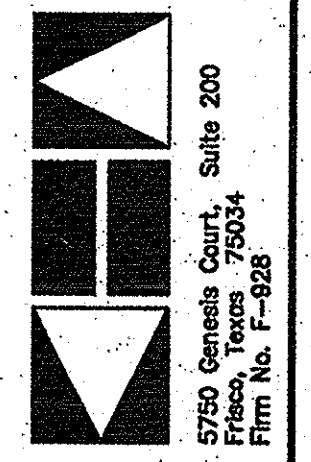
- NOTES**
- ALL SPOT ELEVATIONS ARE TOP OF PAVEMENT ELEVATIONS, UNLESS OTHERWISE NOTED (ADD 0.50' FOR ELEVATION AT TOP OF CURB)
  - CONTRACTOR TO REFER TO STRUCTURAL PLANS FOR SUBGRADE PREPARATION SPECIFICATIONS FOR ALL PROPOSED BUILDING
  - ALL FILL MATERIAL SHALL BE COMPACTED TO A MINIMUM 85% STANDARD PROCTOR DENSITY. REFER TO PAVING SECTION DETAILS FOR SUBGRADE PREPARATION REQUIREMENTS UNDER ALL PAVED AREAS. (REFER TO GEOTECH REPORT)
  - ALL SIDEWALKS SHALL HAVE A MAXIMUM LONGITUDINAL SLOPE OF 5% AND A MAXIMUM CROSS SLOPE OF 2% IF THE CONTRACTOR IDENTIFIES SLOPES GREATER, CONTRACTOR SHALL NOTIFY ENGINEER PRIOR TO CONSTRUCTION.
  - CONTRACTOR SHALL VERIFY COMPLIANCE WITH TEXAS ACCESSIBILITY STANDARDS (TAS) AND SHALL NOTIFY CIVIL ENGINEER IMMEDIATELY OF ANY CONFLICTS.
  - CONTRACTOR SHALL COORDINATE GRADING AT FACE OF BUILDING WITH PLANS BY ARCHITECT AND SHALL NOTIFY CIVIL ENGINEER IMMEDIATELY OF ANY CONFLICTS.
  - MAXIMUM SLOPES FOR CUT AND FILL ARE BOTH 4:1.
  - ALL VAULTS, METERS, MANHOLE RIMS, CLEANOUTS, FIRE HYDRANTS SLABS, ETC. SHALL BE LAID FLUSH WITH PROPOSED FLATWORK GRADING.
  - FOR INFORMATION REGARDING REMOVAL AND RELOCATION OF UTILITIES REFER TO DEMOLITION PLAN, SHEET C-03. CONTRACTOR TO COORDINATE RELOCATION WITH TOWN OF ADDISON.

- BENCH MARK LIST**
- [Symbol] FOUND ON TOP OF THE CONCRETE BASE OF A LIGHT POLE IN THE CENTER MEDIAN OF EXCEL PARKWAY APPROXIMATELY 50 FEET WEST OF THE CENTERLINE OF ADDISON ROAD. (PER TOWN OF ADDISON PLAN # 95103, SHEET 2, DATED JANUARY 1998) ELEV=844.41
  - BM #60 [Symbol] SET ON TOP OF A CONCRETE CURB INLET LOCATED ON THE WEST SIDE OF DALLAS PARKWAY APPROXIMATELY 828 FEET NORTH OF THE CENTERLINE OF SOJOURN DRIVE. ELEV=832.78
  - BM #61 [Symbol] SET ON TOP OF A CONCRETE CURB INLET LOCATED ON THE WEST SIDE OF DALLAS PARKWAY APPROXIMATELY 160 FEET NORTH OF THE CENTERLINE OF SOJOURN DRIVE. ELEV=838.04

**STOP!**  
**CALL BEFORE YOU DIG**  
**DIG TESS**  
**1-800-DIG-TESS**  
(@ least 72 hours prior to digging)

**CAUTION!**  
CONTRACTOR IS TO VERIFY PRESENCE AND EXACT LOCATION OF ALL UTILITIES PRIOR TO CONSTRUCTION.

Kimley-Horn  
and Associates, Inc.  
Tel. No. (972) 335-3960  
Fax. No. (972) 335-3770



DAVID K. KOCHALKA  
87781  
LICENSURE  
12/12/12

METHODIST PAVILION ONE  
TOWN OF ADDISON DALLAS COUNTY, TEXAS

ADDISON ROAD  
ROADWAY  
IMPROVEMENTS

Scale:	AS SHOWN
Designed by:	DKX
Drawn by:	RJK
Checked by:	DKX
Date:	06/27/2012
Project No.:	6906200

SHEET  
C-17

PLOTS: XREF: 6456, XREF: 6457, XREF: 6458, XREF: 6459, XREF: 6460, XREF: 6461, XREF: 6462, XREF: 6463, XREF: 6464, XREF: 6465, XREF: 6466, XREF: 6467, XREF: 6468, XREF: 6469, XREF: 6470, XREF: 6471, XREF: 6472, XREF: 6473, XREF: 6474, XREF: 6475, XREF: 6476, XREF: 6477, XREF: 6478, XREF: 6479, XREF: 6480, XREF: 6481, XREF: 6482, XREF: 6483, XREF: 6484, XREF: 6485, XREF: 6486, XREF: 6487, XREF: 6488, XREF: 6489, XREF: 6490, XREF: 6491, XREF: 6492, XREF: 6493, XREF: 6494, XREF: 6495, XREF: 6496, XREF: 6497, XREF: 6498, XREF: 6499, XREF: 6500, XREF: 6501, XREF: 6502, XREF: 6503, XREF: 6504, XREF: 6505, XREF: 6506, XREF: 6507, XREF: 6508, XREF: 6509, XREF: 6510, XREF: 6511, XREF: 6512, XREF: 6513, XREF: 6514, XREF: 6515, XREF: 6516, XREF: 6517, XREF: 6518, XREF: 6519, XREF: 6520, XREF: 6521, XREF: 6522, XREF: 6523, XREF: 6524, XREF: 6525, XREF: 6526, XREF: 6527, XREF: 6528, XREF: 6529, XREF: 6530, XREF: 6531, XREF: 6532, XREF: 6533, XREF: 6534, XREF: 6535, XREF: 6536, XREF: 6537, XREF: 6538, XREF: 6539, XREF: 6540, XREF: 6541, XREF: 6542, XREF: 6543, XREF: 6544, XREF: 6545, XREF: 6546, XREF: 6547, XREF: 6548, XREF: 6549, XREF: 6550, XREF: 6551, XREF: 6552, XREF: 6553, XREF: 6554, XREF: 6555, XREF: 6556, XREF: 6557, XREF: 6558, XREF: 6559, XREF: 6560, XREF: 6561, XREF: 6562, XREF: 6563, XREF: 6564, XREF: 6565, XREF: 6566, XREF: 6567, XREF: 6568, XREF: 6569, XREF: 6570, XREF: 6571, XREF: 6572, XREF: 6573, XREF: 6574, XREF: 6575, XREF: 6576, XREF: 6577, XREF: 6578, XREF: 6579, XREF: 6580, XREF: 6581, XREF: 6582, XREF: 6583, XREF: 6584, XREF: 6585, XREF: 6586, XREF: 6587, XREF: 6588, XREF: 6589, XREF: 6590, XREF: 6591, XREF: 6592, XREF: 6593, XREF: 6594, XREF: 6595, XREF: 6596, XREF: 6597, XREF: 6598, XREF: 6599, XREF: 6600, XREF: 6601, XREF: 6602, XREF: 6603, XREF: 6604, XREF: 6605, XREF: 6606, XREF: 6607, XREF: 6608, XREF: 6609, XREF: 6610, XREF: 6611, XREF: 6612, XREF: 6613, XREF: 6614, XREF: 6615, XREF: 6616, XREF: 6617, XREF: 6618, XREF: 6619, XREF: 6620, XREF: 6621, XREF: 6622, XREF: 6623, XREF: 6624, XREF: 6625, XREF: 6626, XREF: 6627, XREF: 6628, XREF: 6629, XREF: 6630, XREF: 6631, XREF: 6632, XREF: 6633, XREF: 6634, XREF: 6635, XREF: 6636, XREF: 6637, XREF: 6638, XREF: 6639, XREF: 6640, XREF: 6641, XREF: 6642, XREF: 6643, XREF: 6644, XREF: 6645, XREF: 6646, XREF: 6647, XREF: 6648, XREF: 6649, XREF: 6650, XREF: 6651, XREF: 6652, XREF: 6653, XREF: 6654, XREF: 6655, XREF: 6656, XREF: 6657, XREF: 6658, XREF: 6659, XREF: 6660, XREF: 6661, XREF: 6662, XREF: 6663, XREF: 6664, XREF: 6665, XREF: 6666, XREF: 6667, XREF: 6668, XREF: 6669, XREF: 6670, XREF: 6671, XREF: 6672, XREF: 6673, XREF: 6674, XREF: 6675, XREF: 6676, XREF: 6677, XREF: 6678, XREF: 6679, XREF: 6680, XREF: 6681, XREF: 6682, XREF: 6683, XREF: 6684, XREF: 6685, XREF: 6686, XREF: 6687, XREF: 6688, XREF: 6689, XREF: 6690, XREF: 6691, XREF: 6692, XREF: 6693, XREF: 6694, XREF: 6695, XREF: 6696, XREF: 6697, XREF: 6698, XREF: 6699, XREF: 6700, XREF: 6701, XREF: 6702, XREF: 6703, XREF: 6704, XREF: 6705, XREF: 6706, XREF: 6707, XREF: 6708, XREF: 6709, XREF: 6710, XREF: 6711, XREF: 6712, XREF: 6713, XREF: 6714, XREF: 6715, XREF: 6716, XREF: 6717, XREF: 6718, XREF: 6719, XREF: 6720, XREF: 6721, XREF: 6722, XREF: 6723, XREF: 6724, XREF: 6725, XREF: 6726, XREF: 6727, XREF: 6728, XREF: 6729, XREF: 6730, XREF: 6731, XREF: 6732, XREF: 6733, XREF: 6734, XREF: 6735, XREF: 6736, XREF: 6737, XREF: 6738, XREF: 6739, XREF: 6740, XREF: 6741, XREF: 6742, XREF: 6743, XREF: 6744, XREF: 6745, XREF: 6746, XREF: 6747, XREF: 6748, XREF: 6749, XREF: 6750, XREF: 6751, XREF: 6752, XREF: 6753, XREF: 6754, XREF: 6755, XREF: 6756, XREF: 6757, XREF: 6758, XREF: 6759, XREF: 6760, XREF: 6761, XREF: 6762, XREF: 6763, XREF: 6764, XREF: 6765, XREF: 6766, XREF: 6767, XREF: 6768, XREF: 6769, XREF: 6770, XREF: 6771, XREF: 6772, XREF: 6773, XREF: 6774, XREF: 6775, XREF: 6776, XREF: 6777, XREF: 6778, XREF: 6779, XREF: 6780, XREF: 6781, XREF: 6782, XREF: 6783, XREF: 6784, XREF: 6785, XREF: 6786, XREF: 6787, XREF: 6788, XREF: 6789, XREF: 6790, XREF: 6791, XREF: 6792, XREF: 6793, XREF: 6794, XREF: 6795, XREF: 6796, XREF: 6797, XREF: 6798, XREF: 6799, XREF: 6800, XREF: 6801, XREF: 6802, XREF: 6803, XREF: 6804, XREF: 6805, XREF: 6806, XREF: 6807, XREF: 6808, XREF: 6809, XREF: 6810, XREF: 6811, XREF: 6812, XREF: 6813, XREF: 6814, XREF: 6815, XREF: 6816, XREF: 6817, XREF: 6818, XREF: 6819, XREF: 6820, XREF: 6821, XREF: 6822, XREF: 6823, XREF: 6824, XREF: 6825, XREF: 6826, XREF: 6827, XREF: 6828, XREF: 6829, XREF: 6830, XREF: 6831, XREF: 6832, XREF: 6833, XREF: 6834, XREF: 6835, XREF: 6836, XREF: 6837, XREF: 6838, XREF: 6839, XREF: 6840, XREF: 6841, XREF: 6842, XREF: 6843, XREF: 6844, XREF: 6845, XREF: 6846, XREF: 6847, XREF: 6848, XREF: 6849, XREF: 6850, XREF: 6851, XREF: 6852, XREF: 6853, XREF: 6854, XREF: 6855, XREF: 6856, XREF: 6857, XREF: 6858, XREF: 6859, XREF: 6860, XREF: 6861, XREF: 6862, XREF: 6863, XREF: 6864, XREF: 6865, XREF: 6866, XREF: 6867, XREF: 6868, XREF: 6869, XREF: 6870, XREF: 6871, XREF: 6872, XREF: 6873, XREF: 6874, XREF: 6875, XREF: 6876, XREF: 6877, XREF: 6878, XREF: 6879, XREF: 6880, XREF: 6881, XREF: 6882, XREF: 6883, XREF: 6884, XREF: 6885, XREF: 6886, XREF: 6887, XREF: 6888, XREF: 6889, XREF: 6890, XREF: 6891, XREF: 6892, XREF: 6893, XREF: 6894, XREF: 6895, XREF: 6896, XREF: 6897, XREF: 6898, XREF: 6899, XREF: 6900, XREF: 6901, XREF: 6902, XREF: 6903, XREF: 6904, XREF: 6905, XREF: 6906, XREF: 6907, XREF: 6908, XREF: 6909, XREF: 6910, XREF: 6911, XREF: 6912, XREF: 6913, XREF: 6914, XREF: 6915, XREF: 6916, XREF: 6917, XREF: 6918, XREF: 6919, XREF: 6920, XREF: 6921, XREF: 6922, XREF: 6923, XREF: 6924, XREF: 6925, XREF: 6926, XREF: 6927, XREF: 6928, XREF: 6929, XREF: 6930, XREF: 6931, XREF: 6932, XREF: 6933, XREF: 6934, XREF: 6935, XREF: 6936, XREF: 6937, XREF: 6938, XREF: 6939, XREF: 6940, XREF: 6941, XREF: 6942, XREF: 6943, XREF: 6944, XREF: 6945, XREF: 6946, XREF: 6947, XREF: 6948, XREF: 6949, XREF: 6950, XREF: 6951, XREF: 6952, XREF: 6953, XREF: 6954, XREF: 6955, XREF: 6956, XREF: 6957, XREF: 6958, XREF: 6959, XREF: 6960, XREF: 6961, XREF: 6962, XREF: 6963, XREF: 6964, XREF: 6965, XREF: 6966, XREF: 6967, XREF: 6968, XREF: 6969, XREF: 6970, XREF: 6971, XREF: 6972, XREF: 6973, XREF: 6974, XREF: 6975, XREF: 6976, XREF: 6977, XREF: 6978, XREF: 6979, XREF: 6980, XREF: 6981, XREF: 6982, XREF: 6983, XREF: 6984, XREF: 6985, XREF: 6986, XREF: 6987, XREF: 6988, XREF: 6989, XREF: 6990, XREF: 6991, XREF: 6992, XREF: 6993, XREF: 6994, XREF: 6995, XREF: 6996, XREF: 6997, XREF: 6998, XREF: 6999, XREF: 7000, XREF: 7001, XREF: 7002, XREF: 7003, XREF: 7004, XREF: 7005, XREF: 7006, XREF: 7007, XREF: 7008, XREF: 7009, XREF: 7010, XREF: 7011, XREF: 7012, XREF: 7013, XREF: 7014, XREF: 7015, XREF: 7016, XREF: 7017, XREF: 7018, XREF: 7019, XREF: 7020, XREF: 7021, XREF: 7022, XREF: 7023, XREF: 7024, XREF: 7025, XREF: 7026, XREF: 7027, XREF: 7028, XREF: 7029, XREF: 7030, XREF: 7031, XREF: 7032, XREF: 7033, XREF: 7034, XREF: 7035, XREF: 7036, XREF: 7037, XREF: 7038, XREF: 7039, XREF: 7040, XREF: 7041, XREF: 7042, XREF: 7043, XREF: 7044, XREF: 7045, XREF: 7046, XREF: 7047, XREF: 7048, XREF: 7049, XREF: 7050, XREF: 7051, XREF: 7052, XREF: 7053, XREF: 7054, XREF: 7055, XREF: 7056, XREF: 7057, XREF: 7058, XREF: 7059, XREF: 7060, XREF: 7061, XREF: 7062, XREF: 7063, XREF: 7064, XREF: 7065, XREF: 7066, XREF: 7067, XREF: 7068, XREF: 7069, XREF: 7070, XREF: 7071, XREF: 7072, XREF: 7073, XREF: 7074, XREF: 7075, XREF: 7076, XREF: 7077, XREF: 7078, XREF: 7079, XREF: 7080, XREF: 7081, XREF: 7082, XREF: 7083, XREF: 7084, XREF: 7085, XREF: 7086, XREF: 7087, XREF: 7088, XREF: 7089, XREF: 7090, XREF: 7091, XREF: 7092, XREF: 7093, XREF: 7094, XREF: 7095, XREF: 7096, XREF: 7097, XREF: 7098, XREF: 7099, XREF: 7100, XREF: 7101, XREF: 7102, XREF: 7103, XREF: 7104, XREF: 7105, XREF: 7106, XREF: 7107, XREF: 7108, XREF: 7109, XREF: 7110, XREF: 7111, XREF: 7112, XREF: 7113, XREF: 7114, XREF: 7115, XREF: 7116, XREF: 7117, XREF: 7118, XREF: 7119, XREF: 7120, XREF: 7121, XREF: 7122, XREF: 7123, XREF: 7124, XREF: 7125, XREF: 7126, XREF: 7127, XREF: 7128, XREF: 7129, XREF: 7130, XREF: 7131, XREF: 7132, XREF: 7133, XREF: 7134, XREF: 7135, XREF: 7136, XREF: 7137, XREF: 7138, XREF: 7139, XREF: 7140, XREF: 7141, XREF: 7142, XREF: 7143, XREF: 7144, XREF: 7145, XREF: 7146, XREF: 7147, XREF: 7148, XREF: 7149, XREF: 7150, XREF: 7151, XREF: 7152, XREF: 7153, XREF: 7154, XREF: 7155, XREF: 7156, XREF: 7157, XREF: 7158, XREF: 7159, XREF: 7160, XREF: 7161, XREF: 7162, XREF: 7163, XREF: 7164, XREF: 7165, XREF: 7166, XREF: 7167, XREF: 7168, XREF: 7169, XREF: 7170, XREF: 7171, XREF: 7172, XREF: 7173, XREF: 7174, XREF: 7175, XREF: 7176, XREF: 7177, XREF: 7178, XREF: 7179, XREF: 7180, XREF: 7181, XREF: 7182, XREF: 7183, XREF: 7184, XREF: 7185, XREF: 7186, XREF: 7187, XREF: 7188, XREF: 7189, XREF: 7190, XREF: 7191, XREF: 7192, XREF: 7193, XREF: 7194, XREF: 7195, XREF: 7196, XREF: 7197, XREF: 7198, XREF: 7199, XREF: 7200, XREF: 7201, XREF: 7202, XREF: 7203, XREF: 7204, XREF: 7205, XREF: 7206, XREF: 7207, XREF: 7208, XREF: 7209, XREF: 7210, XREF: 7211, XREF: 7212, XREF: 7213, XREF: 7214, XREF: 7215, XREF: 7216, XREF: 7217, XREF: 7218, XREF: 7219, XREF: 7220, XREF: 7221, XREF: 7222, XREF: 7223, XREF: 7224, XREF: 7225, XREF: 7226, XREF: 7227, XREF: 7228, XREF: 7229, XREF: 7230, XREF: 7231, XREF: 7232, XREF: 7233, XREF: 7234, XREF: 7235, XREF: 7236, XREF: 7237, XREF: 7238, XREF: 7239, XREF: 7240, XREF: 7241, XREF: 7242, XREF: 7243, XREF: 7244, XREF: 7245, XREF: 7246, XREF: 7247, XREF: 7248, XREF: 7249, XREF: 7250, XREF: 7251, XREF: 7252, XREF: 7253, XREF: 7254, XREF: 7255, XREF: 7256, XREF: 7257, XREF: 7258, XREF: 7259, XREF: 7260, XREF: 7261, XREF: 7262, XREF: 7263, XREF: 7264, XREF: 7265, XREF: 7266, XREF: 7267, XREF: 7268, XREF: 7269, XREF: 7270, XREF: 7271, XREF: 7272, XREF: 7273, XREF: 7274, XREF: 7275, XREF: 7276, XREF: 7277, XREF: 7278, XREF: 7279, XREF: 7280, XREF: 7281, XREF: 7282, XREF: 7283, XREF: 7284, XREF: 7285, XREF: 7286, XREF: 7287, XREF: 7288, XREF: 7289, XREF: 7290, XREF: 7291, XREF: 7292, XREF: 7293, XREF: 7294, XREF: 7295, XREF: 7296, XREF: 7297, XREF: 7298, XREF: 7299, XREF: 7300, XREF: 7301, XREF: 7302, XREF: 7303, XREF: 7304, XREF: 7305, XREF: 7306, XREF: 7307, XREF: 7308, XREF: 7309, XREF: 7310, XREF: 7311, XREF: 7312, XREF: 7313, XREF: 7314, XREF: 7315, XREF: 7316, XREF: 7317, XREF: 7318, XREF: 7319, XREF: 7320, XREF: 7321, XREF: 7322, XREF: 7323, XREF: 7324, XREF: 7325, XREF: 7326, XREF: 7327, XREF: 7328, XREF: 7329, XREF: 7330, XREF: 7331, XREF: 7332, XREF: 7333, XREF: 7334, XREF: 7335, XREF: 7336, XREF: 7337, XREF: 7338, XREF: 7339, XREF: 7340, XREF: 7341, XREF: 7342, XREF: 7343, XREF: 7344, XREF: 7345, XREF: 7346, XREF: 7347, XREF: 7348, XREF: 7349, XREF: 7350, XREF: 7351, XREF: 7352, XREF: 7353, XREF: 7354, XREF: 7355, XREF: 7356, XREF: 7357, XREF: 7358, XREF: 7359, XREF: 7360, XREF: 7361, XREF: 7362, XREF: 7363, XREF: 7364, XREF: 7365, XREF: 7366, XREF: 7367, XREF: 7368, XREF: 7369, XREF: 7370, XREF: 7371, XREF: 7372, XREF: 7373, XREF: 7374, XREF: 7375, XREF: 7376, XREF: 7377, XREF: 7378, XREF: 7379, XREF: 7380, XREF: 7381, XREF: 7382, XREF: 7383, XREF: 7384, XREF: 7385, XREF: 7386, XREF: 7387, XREF: 7388, XREF: 7389, XREF: 7390, XREF: 7391, XREF: 7392, XREF: 7393, XREF: 7394, XREF: 7395, XREF: 7396, XREF: 7397, XREF: 7398, XREF: 7399, XREF: 7400, XREF: 7401, XREF: 7402, XREF: 7403, XREF: 7404, XREF: 7405, XREF: 7406, XREF: 7407, XREF: 7408, XREF: 7409, XREF: 7410, XREF: 7411, XREF: 7412, XREF: 7413, XREF: 7414, XREF: 7415, XREF: 7416, XREF: 7417, XREF: 7418, XREF: 7419, XREF: 7420, XREF: 7421, XREF: 7422, XREF: 7423, XREF: 7424, XREF: 7425, XREF: 7426, XREF: 7427, XREF: 7428, XREF: 7429, XREF: 7430, XREF: 7431, XREF: 7432, XREF: 7433, XREF: 7434, XREF: 7435, XREF: 7436, XREF: 7437, XREF: 7438, XREF: 7439, XREF: 7440, XREF: 7441, XREF: 7442, XREF: 7443,