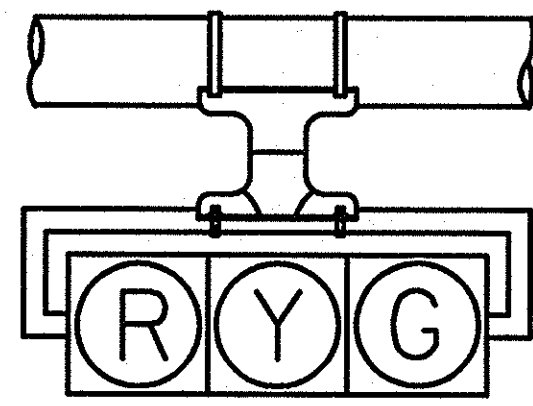
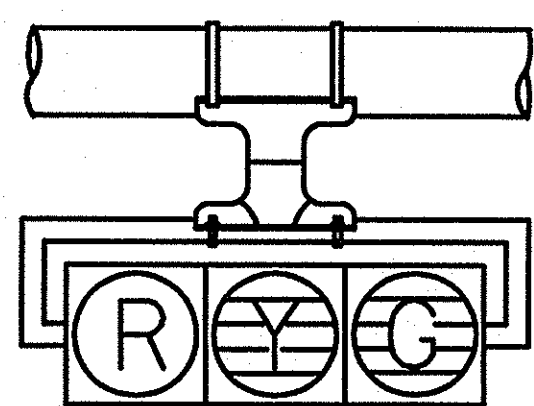


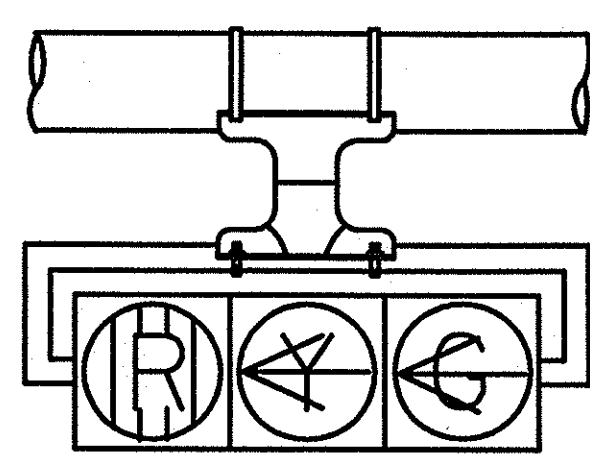
H1TA



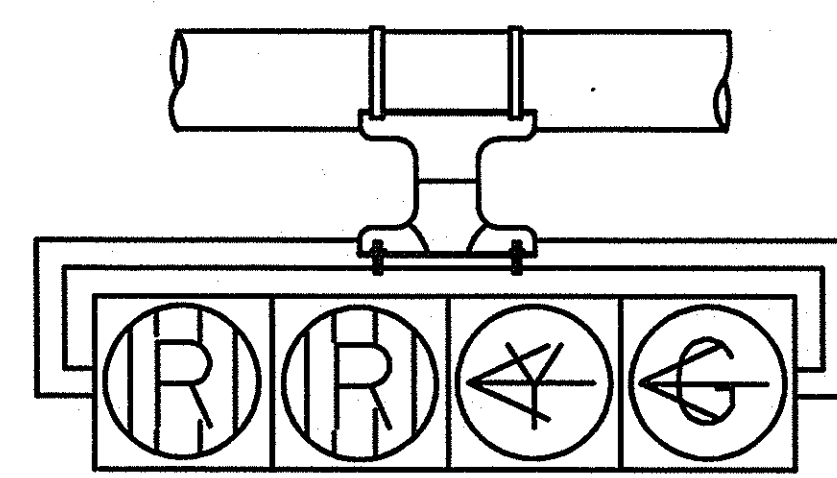
H3



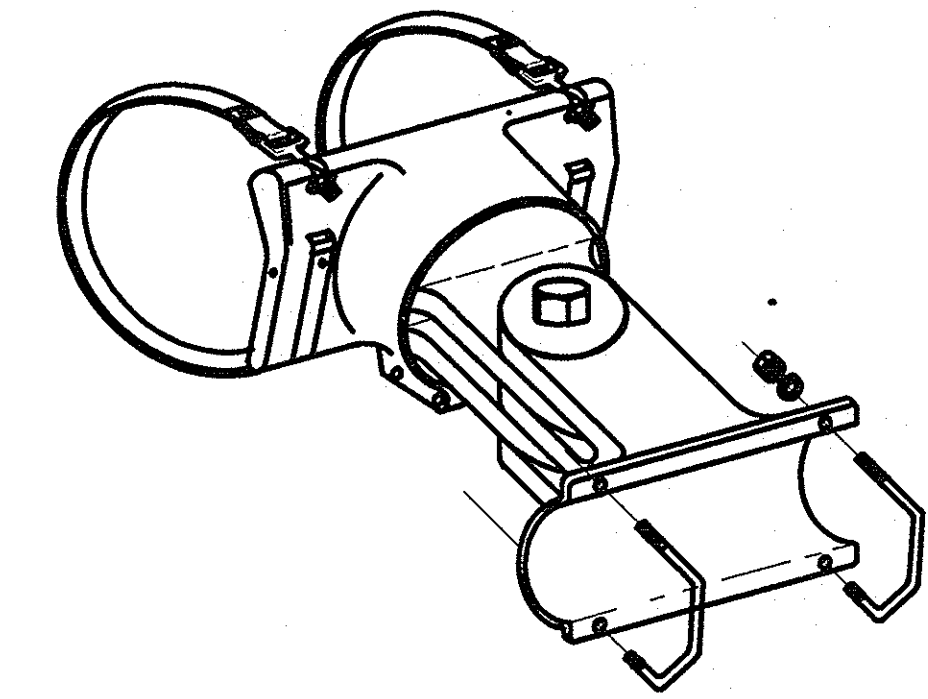
H3L



H3LLT

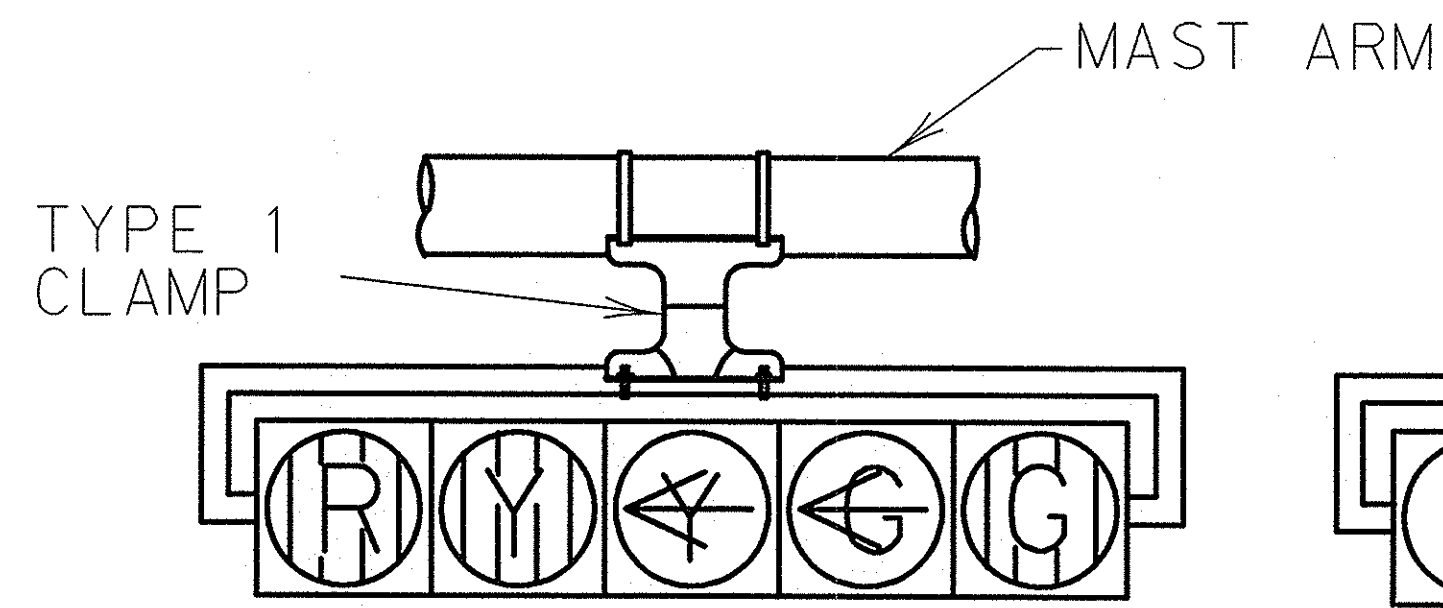


H4LLT

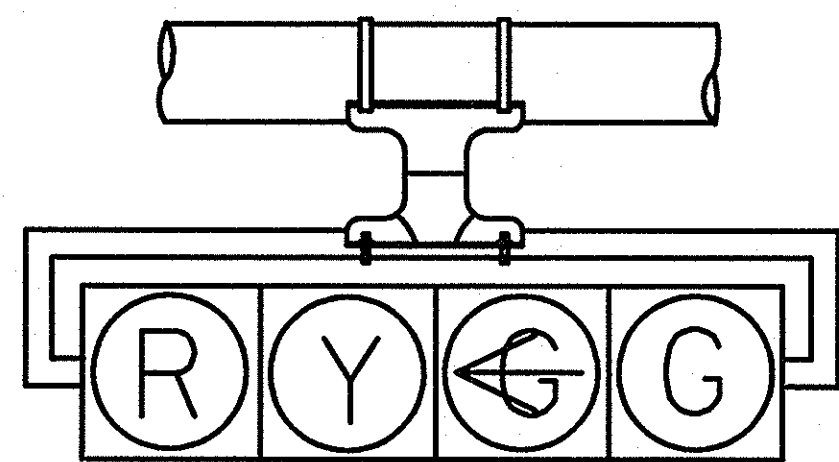


TYPE 2 CLAMP KIT

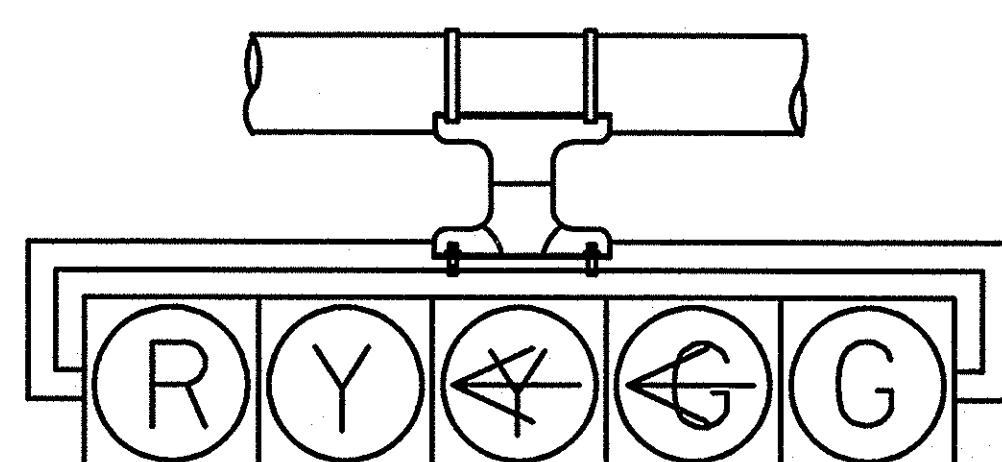
SHALL BE INSTALLED WHEN ROTATION ABOUT THE HORIZONTAL AND VERTICAL AXES ARE NEEDED.



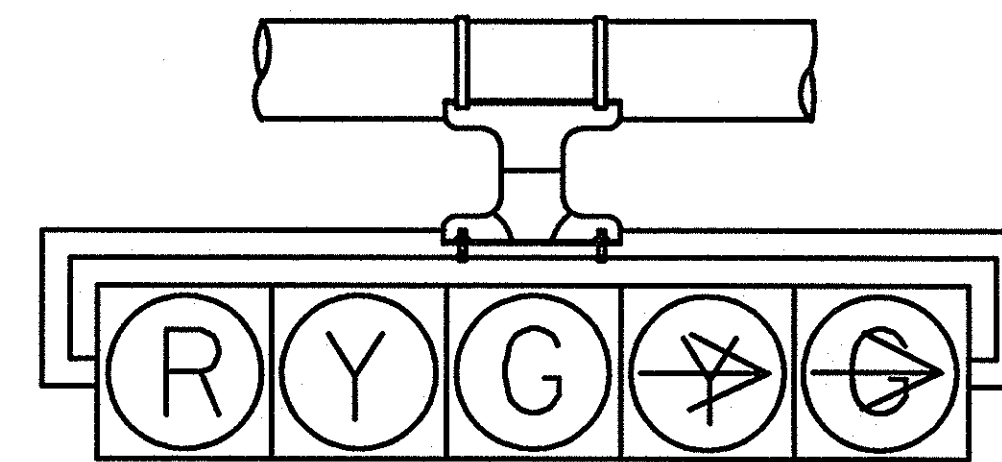
H5LLT



H4LT

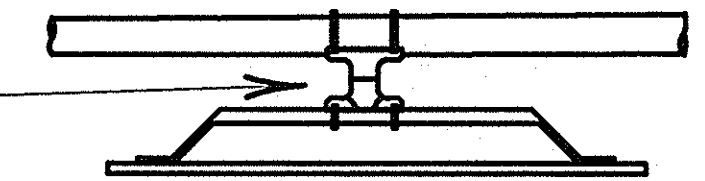


H5LT



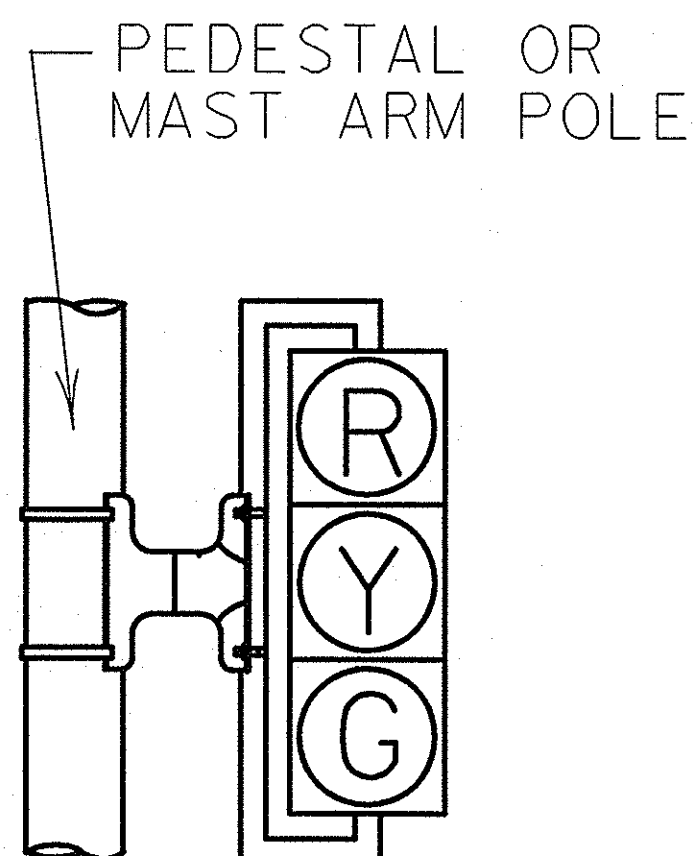
H5RT

TYPE 1 CLAMP

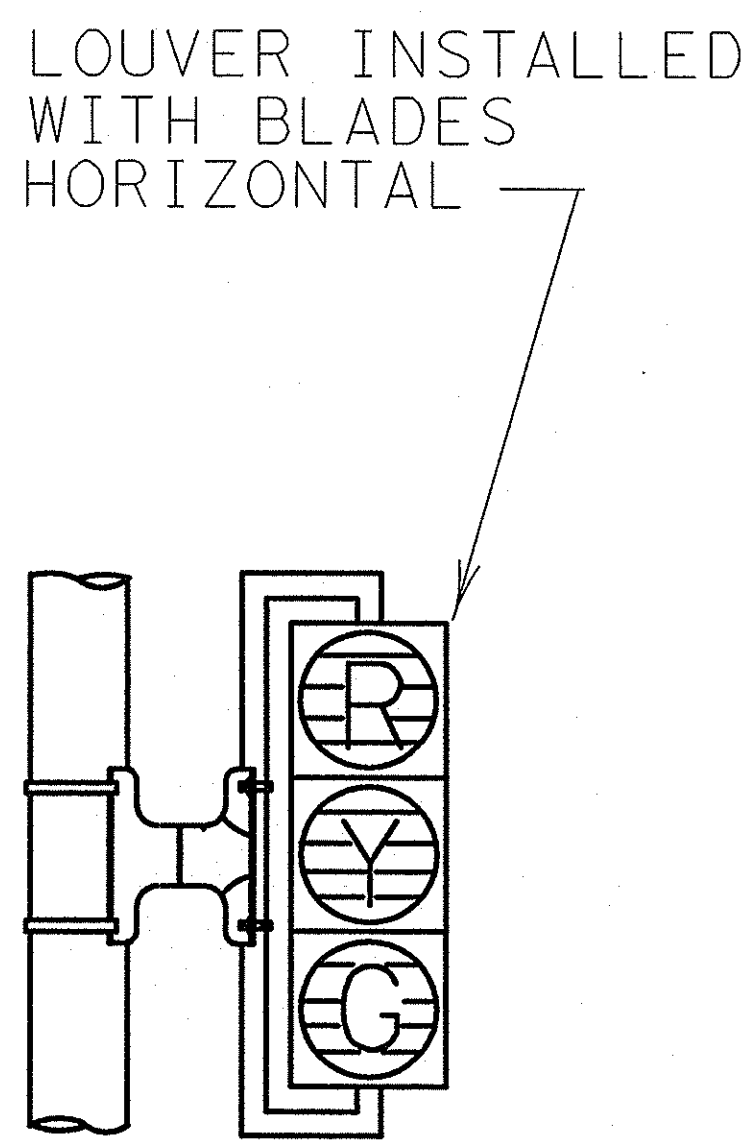


ONE (1) CLAMP SHALL BE USED ON SIGNS LESS THAN OR EQUAL TO 10'-0" IN LENGTH.

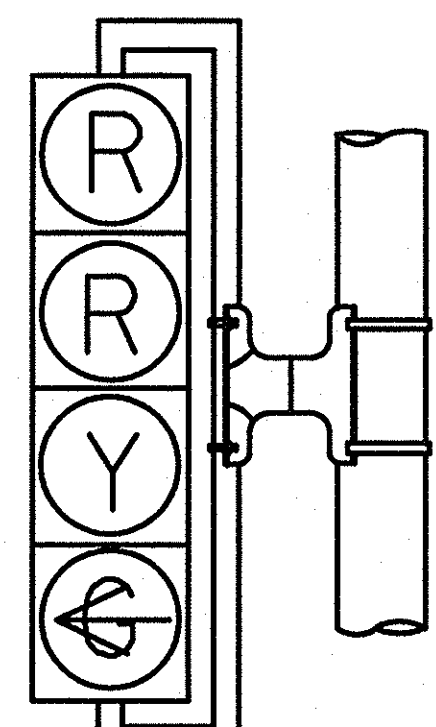
TWO (2) CLAMPS SHALL BE USED ON SIGNS GREATER THAN 10'-0" IN LENGTH.



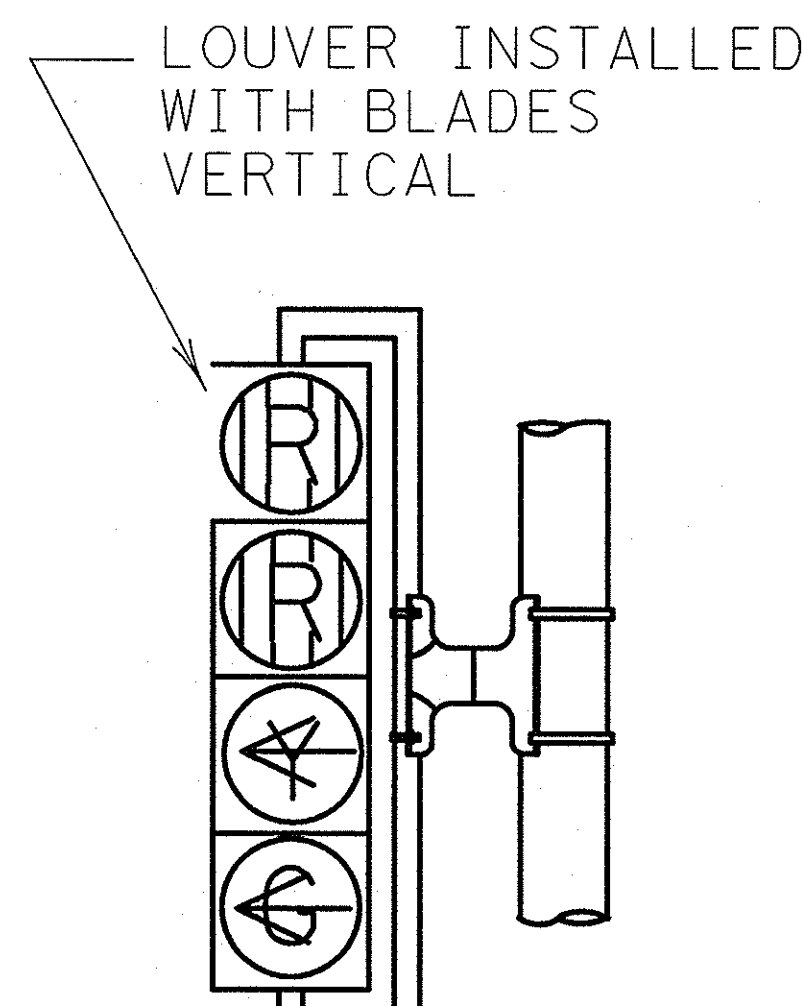
V3



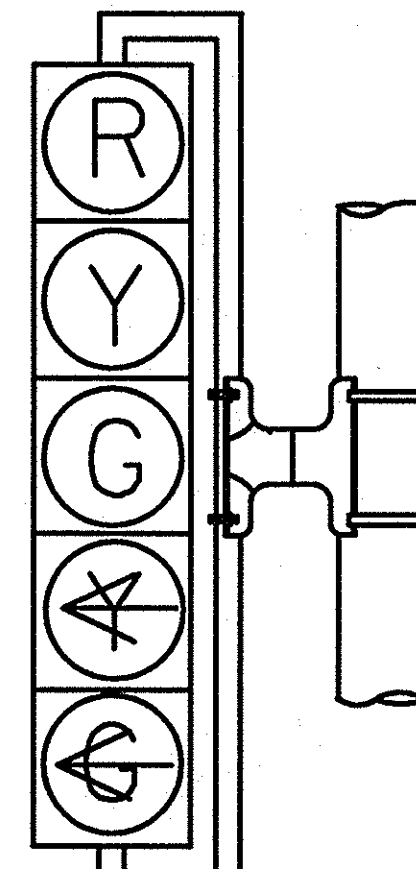
V3L



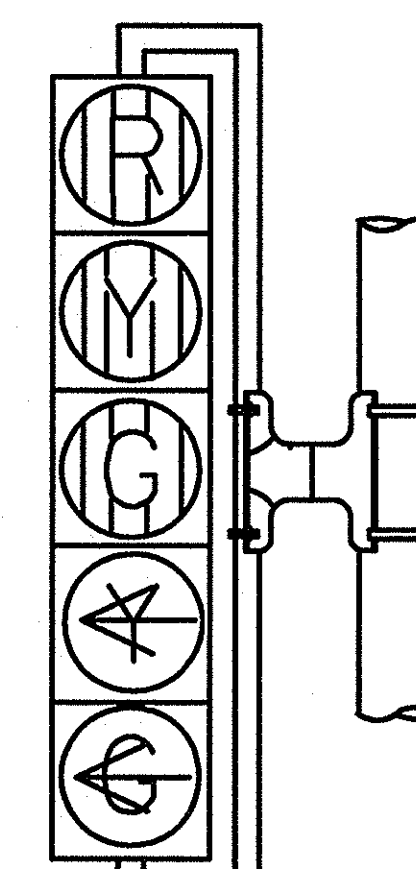
V4LT



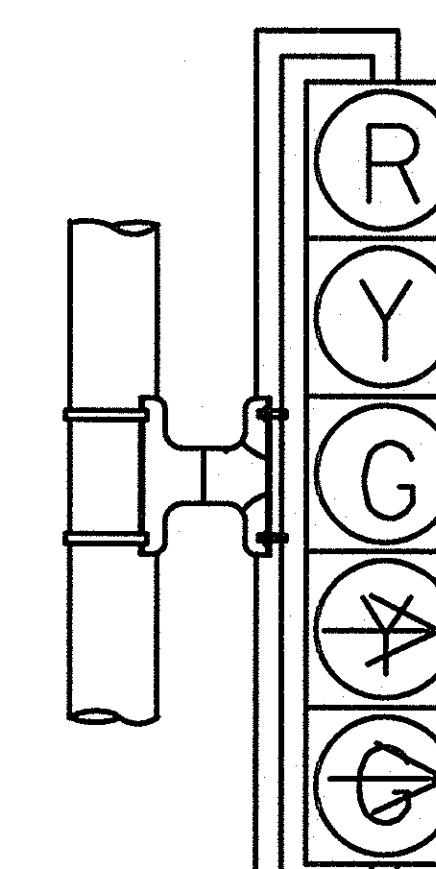
V4LLT



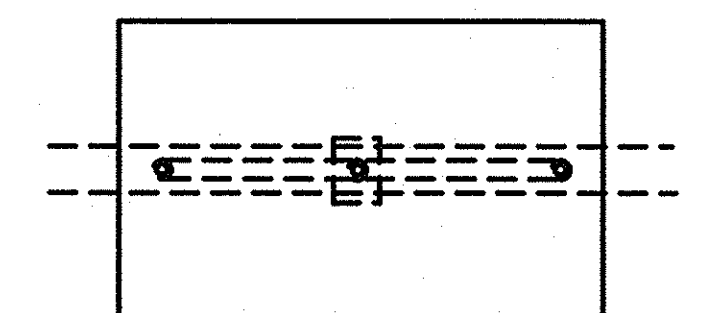
V5LT



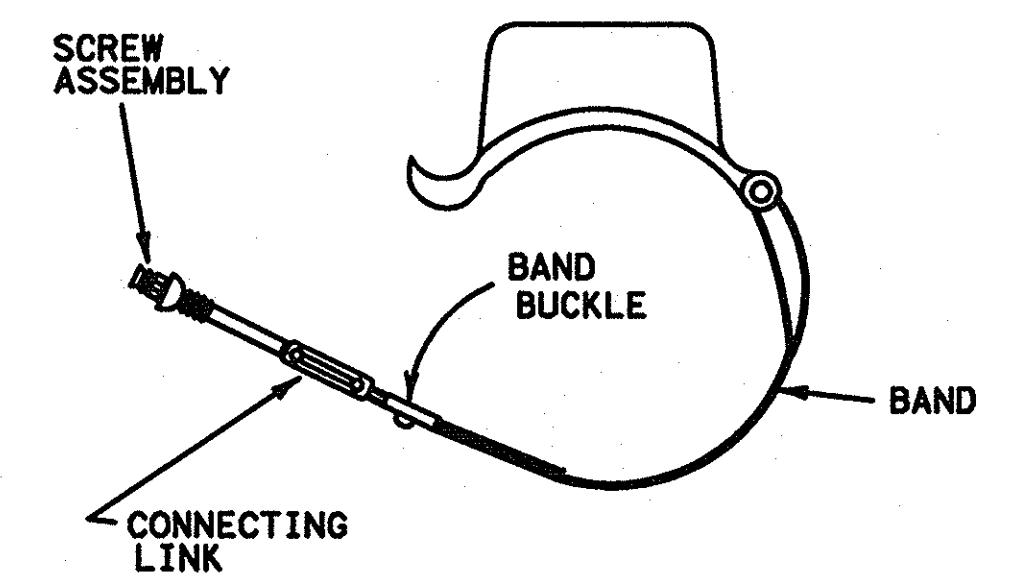
V5LLT



V5RT



SIGN OR DAMPENING DEVICE ATTACHMENT FOR MAST ARMS



TYPE 1 AND 2 CLAMPS

NOTES:

1. VEHICLE SIGNAL HEADS SHALL BE MOUNTED WITH TYPE 1 CLAMP AND APPROPRIATE TUBING.
2. ALL POLE MOUNTED VEHICLE HEADS SHALL BE INSTALLED ON THE AWAY-FROM-TRAFFIC SIDE OF THE PEDESTAL OR MAST ARM POLE.
3. ALL DAMPING DEVICES SHALL BE 18" TO 2' WIDE BY 4' IN LENGTH.

RECORD DRAWINGS (July 2013) INFORMATION PROVIDED BY: Rogers-O'Brien Construction Company

TRAFFIC SIGNAL HEAD IDENTIFICATION

TXDOT 2005 DALLAS DISTRICT STANDARD

FED. RD. DIV. NO.	FEDERAL AID PROJECT NO.	SHEET NO.
6		
STATE	STATE DIST.	COUNTY
TEXAS		
CONT.	SECT.	JOB HIGHWAY NO.