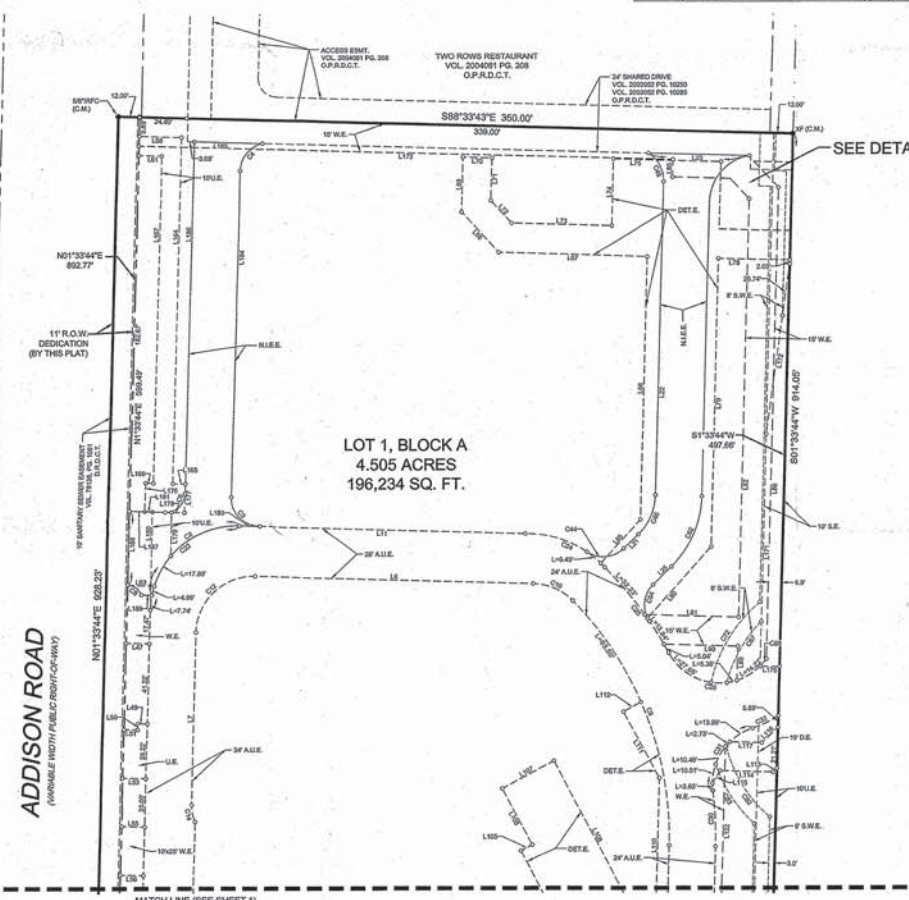
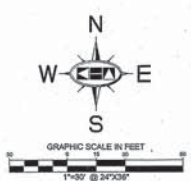


LINE TABLE			LINE TABLE			LINE TABLE		
NO.	BEARING	LENGTH	NO.	BEARING	LENGTH	NO.	BEARING	LENGTH
L1	N89°21'00"W	21.68	L76	S84°21'00"E	15.00	L102	N07°33'45"E	128.82
L2	N01°33'44"E	102.20	L77	S01°33'44"W	21.60	L103	N89°21'00"W	4.89
L3	N07°33'44"E	7.87	L78	S40°21'00"E	15.67	L104	N07°33'45"E	15.00
L4	S07°33'44"W	3.64	L79	S89°21'00"E	01.50	L105	N07°33'45"E	5.00
L5	N07°33'44"E	177.28	L80	N07°33'45"E	01.50	L106	N07°33'45"E	31.77
L6	N89°21'00"E	144.19	L81	S89°21'00"E	06.60	L107	N07°33'45"E	15.00
L7	S01°33'44"W	88.87	L82	S01°33'44"W	34.20	L108	S89°21'00"E	31.77
L8	S01°33'44"W	258.87	L83	S89°21'00"E	37.07	L109	N07°33'45"E	133.47
L9	S89°21'00"E	32.24	L84	N07°33'45"E	57.07	L110	N07°33'45"E	54.64
L10	N01°33'44"E	303.19	L85	S01°33'44"W	141.17	L111	S89°21'00"E	75.27
L11	S89°21'00"E	148.89	L86	S41°33'44"W	49.70	L112	N07°33'45"E	98.89
L12	N01°33'44"E	82.02	L87	S07°33'44"W	48.90	L113	N07°33'45"E	42.87
L13	N07°33'44"E	103.87	L88	N07°33'45"E	216.34	L114	S89°21'00"E	69.07
L14	S89°21'00"E	28.77	L89	N89°21'00"W	14.30	L115	S89°21'00"E	21.00
L15	N89°21'00"E	17.30	L90	N89°21'00"W	28.89	L116	N07°33'45"E	15.00
L16	N01°33'44"E	47.64	L91	N01°33'44"E	9.04	L117	N07°33'45"E	21.00
L17	S89°21'00"E	12.62	L92	S89°21'00"E	19.80	L118	N07°33'45"E	19.80
L18	S89°21'00"E	3.64	L93	S40°21'00"E	16.48	L119	N89°21'00"W	15.00
L19	S89°21'00"E	0.81	L94	S01°33'44"W	343.27	L120	N07°33'45"E	15.00
L20	N07°33'44"E	33.81	L95	N07°33'45"E	17.88	L121	N07°33'45"E	4.89
L21	N07°33'44"E	161.07	L96	N89°21'00"W	38.21	L122	N07°33'45"E	103.47
L22	S89°21'00"E	52.20	L97	N01°33'44"E	234.48	L123	S89°21'00"E	7.87
L23	S01°33'44"W	154.13	L98	N89°21'00"W	8.80	L124	N07°33'45"E	15.00
L24	S01°33'44"W	154.13	L99	N01°33'44"E	27.00	L125	S89°21'00"E	7.87
L25	S40°21'00"E	19.27	L100	N01°33'44"E	73.70	L126	S89°21'00"E	127.00
L26	S89°21'00"E	8.00	L101	N07°33'45"E	73.70	L127	S01°33'44"W	177.82
L27	S01°33'44"W	15.00	L102	N89°21'00"W	8.00	L128	S01°33'44"W	177.82
L28	N07°33'44"E	0.00	L103	S89°21'00"E	19.87	L129	S89°21'00"E	8.00
L29	S89°21'00"E	52.89	L104	N07°33'45"E	4.89	L130	S89°21'00"E	4.01
L30	N07°33'44"E	15.00	L105	N07°33'45"E	78.87	L131	N07°33'45"E	103.47
L31	S89°21'00"E	15.00	L106	N89°21'00"W	100.80	L132	N07°33'45"E	100.80
L32	N07°33'44"E	7.87	L107	N07°33'45"E	100.80	L133	N07°33'45"E	88.32
L33	S89°21'00"E	11.00	L108	S89°21'00"E	5.82	L134	S89°21'00"E	278.89
L34	S89°21'00"E	11.00	L109	N07°33'45"E	3.00	L135	N89°21'00"W	15.00
L35	N07°33'44"E	15.00	L110	N07°33'45"E	33.00	L136	S89°21'00"E	15.00
L36	S89°21'00"E	38.89	L111	N89°21'00"W	33.00	L137	N07°33'45"E	15.00
L37	N07°33'44"E	12.62	L112	N07°33'45"E	10.42	L138	S89°21'00"E	30.30
L38	S89°21'00"E	12.62	L113	N07°33'45"E	10.42	L139	S89°21'00"E	30.30
L39	N07°33'44"E	195.67	L114	S40°21'00"E	11.87	L140	N07°33'45"E	188.89
L40	S89°21'00"E	76.87	L115	S07°33'44"W	27.42	L141	N07°33'45"E	18.89
L41	N89°21'00"W	28.19	L116	S21°33'44"W	7.30	L142	N07°33'45"E	38.52
L42	N01°33'44"E	28.11	L117	S40°21'00"E	11.87	L143	N07°33'45"E	5.40
L43	N01°33'44"E	28.11	L118	N01°33'44"E	103.11	L144	N07°33'45"E	5.40

CURVE TABLE				
NO.	DELTA	RADIUS	LENGTH	CHORD BEARING
C1	27°33'44"	15.00	6.70	N75°22'00"W
C2	87°33'44"	48.80	82.80	S17°33'45"E
C3	97°33'44"	15.00	25.50	S42°21'00"E
C4	79°48'21"	15.00	19.80	S27°21'00"W
C5	27°33'44"	88.00	32.30	N10°33'45"E
C6	97°33'44"	15.00	15.71	N47°33'44"E
C7	27°18'50"	15.00	8.42	N14°14'42"E
C8	67°33'44"	8.00	5.30	N37°33'44"E
C9	47°33'44"	13.48	13.68	N17°33'44"E
C10	47°33'44"	35.00	22.90	N17°33'44"E
C11	87°33'44"	35.00	47.12	S47°33'44"E
C12	27°33'44"	20.00	9.32	S17°33'44"E
C13	67°33'44"	88.00	38.79	S17°33'44"E
C14	117°33'44"	85.00	11.17	S87°33'44"E
C15	67°33'44"	8.00	5.30	N17°33'44"E
C16	17°33'44"	85.00	28.17	N17°33'44"E
C17	50°00'00"	45.00	75.89	N47°33'44"E
C18	47°33'44"	58.81	45.87	S87°33'44"E
C19	197°33'44"	197.48	55.44	S87°33'44"E
C20	107°33'44"	30.00	55.80	S17°33'44"E
C21	127°12'00"	80.00	12.50	N17°33'44"E
C22	67°42'00"	35.00	35.89	N17°12'00"W
C23	97°33'44"	107.48	25.80	N17°33'44"E
C24	27°33'44"	54.00	14.70	N47°33'44"E
C25	27°33'44"	30.00	11.80	N17°33'44"E
C26	27°33'44"	56.00	22.32	N17°33'44"E
C27	107°33'44"	15.00	22.87	N47°33'44"E
C28	107°33'44"	30.00	31.42	S47°33'44"E
C29	107°33'44"	20.00	12.61	S17°33'44"E
C30	79°12'00"	15.00	23.24	N47°33'44"E
C31	47°33'44"	30.00	22.80	N17°33'44"E
C32	58°33'44"	17.00	17.47	N17°33'44"E
C33	79°48'21"	25.00	34.39	S47°33'44"E
C34	47°33'44"	54.00	41.19	S17°33'44"E
C35	79°25'21"	15.00	25.39	S87°33'44"E
C36	37°58'50"	76.30	48.81	N17°33'44"E
C37	58°33'44"	88.30	45.87	N17°33'44"E
C38	17°42'12"	78.30	38.80	N17°33'44"E
C39	37°42'12"	88.30	38.84	N17°33'44"E
C40	97°25'21"	30.00	4.80	N47°33'44"E



**RECORD DRAWINGS (SEPTEMBER 2010)**  
 INFORMATION PROVIDED BY:  
 Rogers-O'Brien Construction Company

**FINAL PLAT MHS ADDITION**  
 LOT 1 & LOT 2, BLOCK A  
 ELI SHEPARD SURVEY, ABSTRACT NO. 1361  
 TOWN OF ADDISON  
 DALLAS COUNTY, TEXAS

**Kimley-Horn and Associates, Inc.**  
 12700 Park Central Drive, Suite 1800  
 Dallas, Texas 75248  
 Tel. No. (972) 770-1300  
 Fax No. (972) 238-3550

Scale: 1" = 30'  
 Drawn by: SRD  
 Checked by: DAB  
 Date: APRIL 2008  
 Project No.: 069302800  
 Sheet No.: 2 OF 2

- NOTES**
- The bearing system for this plat is based on grid north of the Texas Coordinate System of 1983 resulting in a bearing of North 01°33'44" East, for the east right-of-way line of Addison Road.
  - All easements are by this plat unless otherwise noted.
  - This plat is subject to restrictions contained in deeds recorded in Volume 78115, Page 2004, Volume 78345, Page 1911, and Volume 81101, Page 2295, all of the Deed Records of Dallas County, Texas.

Confirmed Copy  
 of Final Public Record  
 2010020408