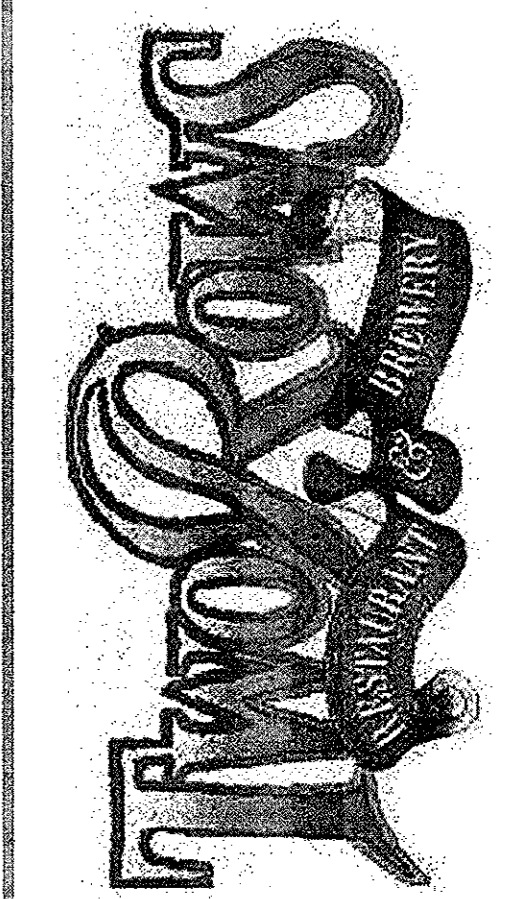




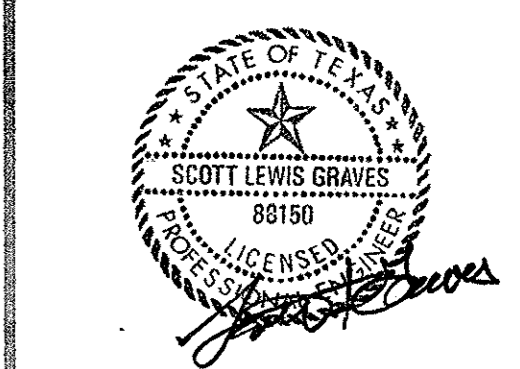
2350 Valley View Lane
Suite 100
Dallas, Texas 75234-5734
T 214.351.5400
F 214.351.2095
info@wdpartners.com
wdpartners.com

Dallas
Columbus
Los Angeles
Chicago
Miami

expesite.com



17225 Dallas Parkway
Addison, TX



REVISIONS

1	12/19/02 (City)
2	
3	
4	
5	
6	
7	
8	
9	
10	

PROTOTYPE

STORE NUMBER

WD PROJECT NUMBER
0000.659-00

C1.1 EROSION CONTROL DETAILS

CONSTRUCTION SEQUENCE

- FLAG ALL WORK LIMITS.
- NOTIFY SEDIMENT CONTROL INSPECTOR (24) HOURS PRIOR TO START OF CONSTRUCTION.
- IDENTIFY AND PROTECT ALL EXISTING VEGETATION TO BE SAVED
- PERFORM CLEARING AND GRADING REQUIRED FOR INSTALLATION OF PERIMETER CONTROLS.
- INSTALL PERIMETER RUNOFF CONTROLS; NOTIFY SEDIMENT CONTROL INSPECTOR AND OBTAIN APPROVAL BEFORE PROCEEDING FURTHER.
- COMPLETE ALL REQUIRED STOCKPILING, SITE CLEARING AND GRADING.
- CONSTRUCT PARKING LOT BASE, BUILDING FOUNDATION AND INSTALL SITE UTILITIES.
- INSTALL STORM DRAINAGE PROTECTION.
- WEATHER IN BUILDING.
- COMPLETE PARKING LOT CONSTRUCTION.
- COMPLETE FINAL GRADING, STABILIZATION, AND LANDSCAPING.
- NOTIFY SEDIMENT CONTROL INSPECTOR AND OBTAIN APPROVAL TO REMOVE SEDIMENT AND EROSION CONTROL.

TEMPORARY SEEDING NOTES

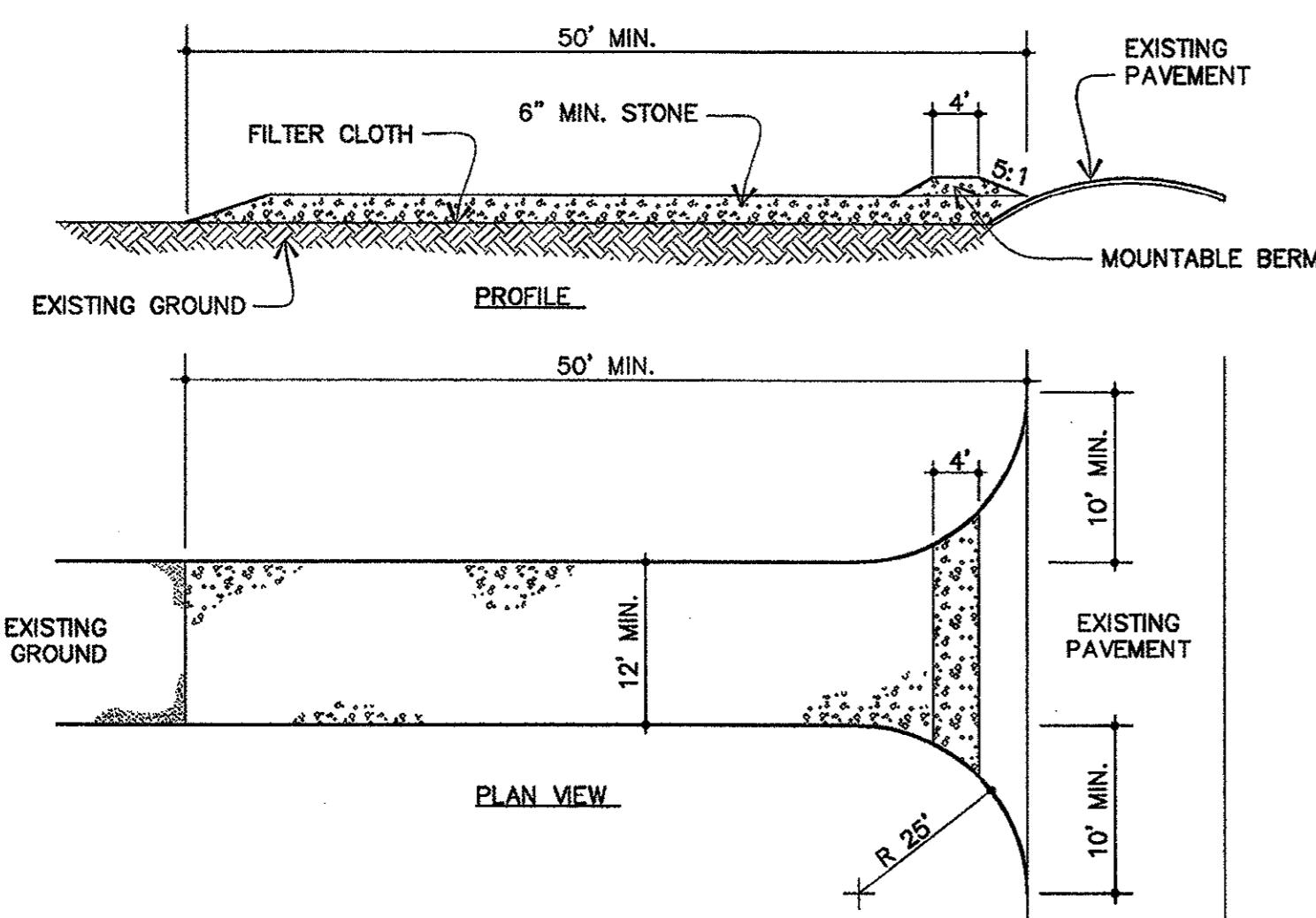
- WHERE TEMPORARY SEEDING IS REQUIRED OR NECESSARY THE FOLLOWING NOTES SHALL GOVERN:
- SCOPE: PLANTING SHORT TERM VEGETATION TO STABILIZE CLEARED OR GRADED AREAS SUBJECT TO EROSION WITHIN A PERIOD OF 14 DAYS.
 - STANDARDS: TEMPORARY SEEDING SHALL CONFORM TO ALL REQUIREMENTS OF GOVERNING STATE AND LOCAL SOIL AND EROSION CONTROL AND CONSERVATION AUTHORITIES.
 - SEDIMENT AND EROSION CONTROL: ALL PERIMETER CONTROLS MUST BE STABILIZED IN 7 DAYS. ALL INTERIOR CONTROLS MUST BE STABILIZED IN 14 DAYS.
- SPECIFICATIONS
- SITE PREPARATION
 - PRIOR TO SEEDING, INSTALL ALL REQUIRED SEDIMENT AND EROSION CONTROL MEASURES.
 - FINAL GRADING NOT REQUIRED FOR TEMPORARY SEEDING.
 - SOIL AMENDMENTS
 - FERTILIZERS SHALL BE APPLIED AT A RATE OF 600 LBS./ACRE USING 10-10-10 OR EQUIVALENT.
 - PROVIDE SOIL PH TESTING. ADJUST THE PH RANGE OF SOILS THAT ARE UNACCEPTABLE PER LOCAL COOPERATIVE EXTENSION SERVICE TURF STANDARDS. INCORPORATE RAW GROUND AGRICULTURAL LIMESTONE OR ALUMINUM SULFATE UNIFORMLY AT THE RATE SPECIFIED BY THE MANUFACTURER.
 - SEEDBED PREPARATION
 - SOIL SHALL BE LOOSENEED TO A DEPTH OF 4 INCHES BY RAKING, DISCING, OR OTHER ACCEPTABLE MEANS PRIOR TO SEEDING.
 - SEEDING
 - SEED TO BE ANNUAL RYE GRASS (LOLIUM MUTIFLORUM) APPLIED AT A RATE OF 2.0 LBS./1000 SQ. FT.
 - APPLY SEED UNIFORMLY WITH CYCLONE SEEDER DRILL, CULTIPACKER, OR HYDROSEEDER.

NOTE: IF HYDROSEEDING IS USED AND THE SEED, FERTILIZER AND MULCH ARE MIXED, THEY WILL BE MIXED ON SITE AND SEEDING SHALL BE IMMEDIATE WITHOUT INTERRUPTION.

NOTE: DO NOT APPLY SEED IF GROUND IS FROZEN OR MUDDY.
 - MULCHING
 - STRAW MULCH SHALL BE APPLIED IMMEDIATELY AFTER SEEDING (NON HYDROSEEDING) AT A RATE OF 140 LBS.± (2 BALES) PER 1000 SF. MULCH MAY BE APPLIED BY HAND OR WITH A BLOWER. MULCH SHALL BE CLEAN, WELL SEASONED STRAW FREE OF SEEDS OR ROOTS OF NOXIOUS WEEDS.
 - MULCH FOR HYDROSEEDING SHALL BE WOOD CELLULOSE FIBER MULCH APPLIED AT A RATE OF 2,000 LBS. / ACRE. 1000 SF. MULCH MAY BE APPLIED BY HAND OR WITH A BLOWER.
 - STRAW MULCH SHALL BE KEPT IN PLACE WITH ASPHALT EMULSION APPLIED AT A MIN. RATE OF 60 GAL. / TON OF MULCH.

GENERAL NOTES

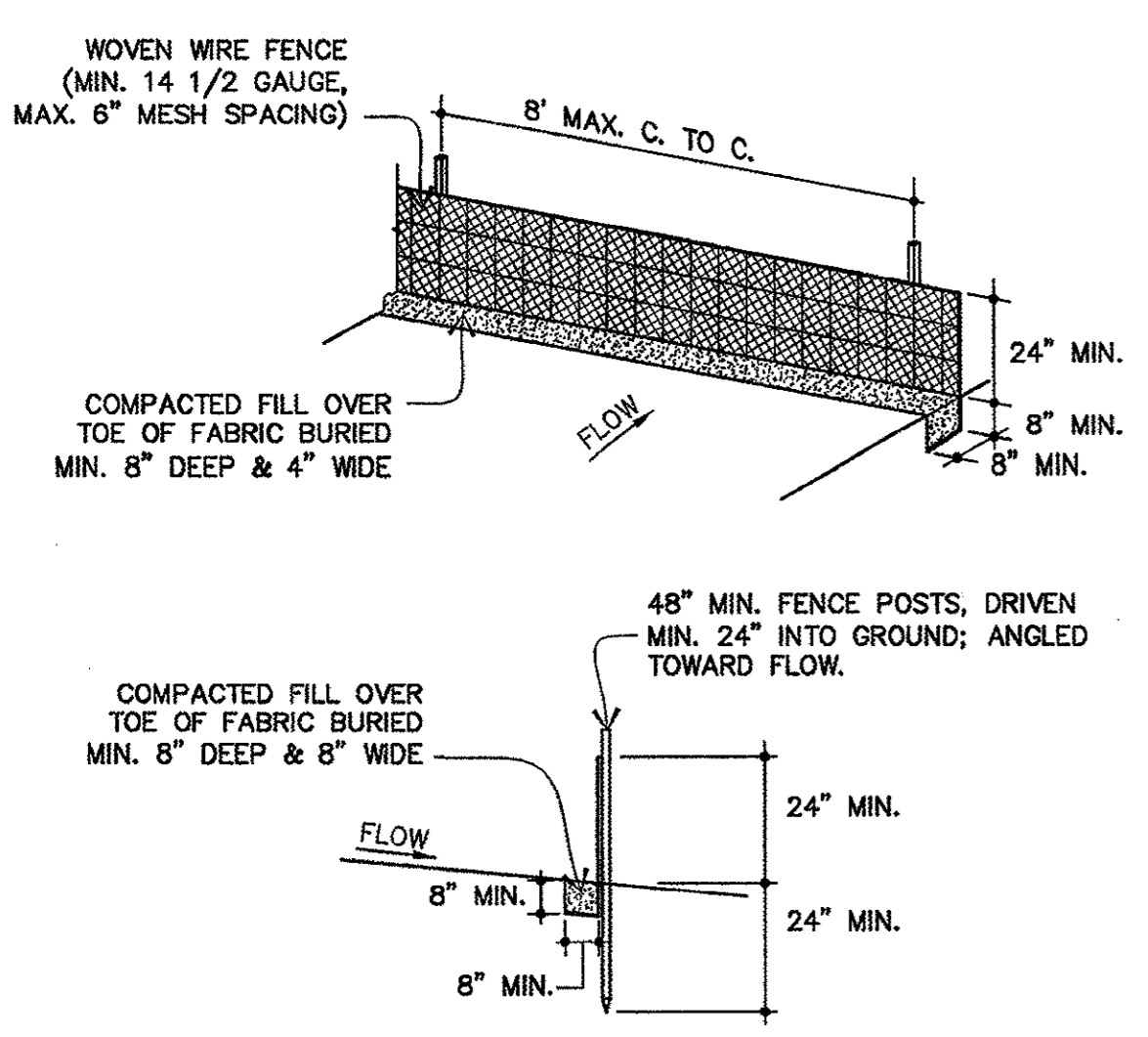
- ALL EROSION/SEDIMENT CONTROL MEASURES SHALL COMPLY WITH STATE AND LOCAL SOIL EROSION CONTROL AND CONSERVATION STANDARDS. ADDITIONAL MEASURES TO PREVENT / CONTROL SOIL SEDIMENTATION OR EROSION MAY BE REQUIRED DUE TO SITE CONSIDERATIONS WITHIN THE BOUNDARY LIMITS AND DOWNSTREAM.
- PRIOR TO DEVELOPMENT, PERIMETER SHALL BE CLEARLY MARKED AND ALL SOIL DISTURBANCE TO BE CONTAINED WITHIN. OFF SITE WORK MAY BE NECESSARY DUE TO ACTUAL SITE SLOPE OR DRAINAGE REQUIREMENTS ALL CONTROL MEASURES MUST CONFORM TO SITE STANDARDS.
- ALL POINTS OF SITE INGRESS AND EGRESS TO BE CONSTRUCTED PRIOR TO ANY OTHER DEVELOPMENT. THEY MUST BE STABILIZED AND INCLUDE SOIL EROSION / SEDIMENTATION CONTROL MEASURES IN ORDER TO PREVENT TRACKING AND SILTING OF MUD INTO PUBLIC RIGHT OF WAY. ANY MATERIALS DEPOSITED FROM SITE ONTO PUBLIC ROADWAYS OR DRAINAGE AREAS TO BE IMMEDIATELY REMOVED.
- ALL STORM DRAIN AND SANITARY SEWER TRENCHES NOT IN PAVED AREAS ARE TO BE MULCHED AND/OR SEEDED WITHIN 14 DAYS AFTER INITIAL BACKFILL.
- DURING CONSTRUCTION, ALL SEDIMENT CONTROL STRUCTURES WILL BE INSPECTED AFTER EACH RAINFALL AND REPAIRED IF NECESSARY. SEDIMENT TO BE REMOVED TO A SUITABLE DISPOSAL AREA AND STABILIZED WITH PERMANENT VEGETATIVE COVER.
- CONTRACTOR IS RESPONSIBLE FOR MAINTAINING ALL SEDIMENT AND EROSION CONTROL MEASURES UNTIL DISTURBED AREAS ARE STABILIZED.
- AFTER FINE GRADING, ALL DISTURBED AREAS ARE TO BE PERMANENTLY SEEDED AND/OR SODDED.
- NO SLOPE SHALL BE GREATER THAN 2:1.
- FOLLOWING INITIAL SOIL DISTURBANCE, PERMANENT OR TEMPORARY STABILIZATION SHALL BE COMPLETED WITHIN SEVEN CALENDAR DAYS AS TO THE SURFACE OF ALL PERIMETER CONTROLS, DIKES, SWALES, DITCHES, PERIMETER SLOPES, AND ALL SLOPES GREATER THAN 3 HORIZONTAL TO 1 VERTICAL (3:1); AND FOURTEEN DAYS AS TO ALL OTHER DISTURBED OR GRADED AREAS ON THE PROJECT SITE. THIS DOES NOT APPLY TO THOSE AREAS WHICH ARE SHOWN ON THE PLAN AND ARE CURRENTLY BEING USED FOR MATERIAL STORAGE OR FOR THOSE AREAS ON WHICH ACTUAL CONSTRUCTION ACTIVITIES ARE CURRENTLY BEING PERFORMED. MAINTENANCE SHALL BE PERFORMED AS NECESSARY TO ENSURE THAT STABILIZED AREAS CONTINUOUSLY MEET THE APPROPRIATE REQUIREMENTS OF GOVERNING AUTHORITIES.
- MULCH FILTER BERM MAY BE USED IN LIEU OF SILT FENCE. VERIFY WITH SEDIMENT CONTROL INSPECTOR PRIOR TO INSTALLATION.



- STABILIZED CONSTRUCTION ENTRANCE**
- STONE SIZE - USE #2 STONE, OR RECLAIMED OR RECYCLED CONCRETE EQUIVALENT.
 - LENGTH - AS REQUIRED, BUT NOT LESS THAN 50 FEET
 - DEPTH - NOT LESS THAN SIX (6) INCHES.
 - WIDTH - TWELVE (12) FOOT MINIMUM, BUT NOT LESS THAN THE FULL WIDTH AT POINTS WHERE INGRESS OR EGRESS OCCURS.
 - FILTER CLOTH - WILL BE PLACED OVER THE ENTIRE AREA PRIOR TO PLACING OF STONE.
 - SURFACE WATER - ALL SURFACE WATER FLOWING OR DIVERTED TOWARD CONSTRUCTION ENTRANCES SHALL BE PIPED ACROSS THE ENTRANCE. IF PIPING IS IMPRACTICAL, A MOUNTABLE BERM WITH 5:1 SLOPES WILL BE PERMITTED.
 - MAINTENANCE - THE ENTRANCE SHALL BE MAINTAINED IN A CONDITION WHICH WILL PREVENT TRACKING OR FLOWING OF SEDIMENT ONTO PUBLIC RIGHTS-OF-WAY. THIS MAY REQUIRE PERIODIC TOP DRESSING WITH ADDITIONAL STONE AS CONDITIONS DEMAND AND REPAIR AND/OR CLEAN OUT OF ANY MEASURES USED TO TRAP SEDIMENT. ALL SEDIMENT SPILLED, DROPPED, WASHED OR TRACKED ONTO PUBLIC RIGHT-OF-WAY MUST BE REMOVED IMMEDIATELY.
 - WASHING - WHEELS SHALL BE CLEANED TO REMOVE SEDIMENT PRIOR TO ENTRANCE ONTO PUBLIC RIGHTS-OF-WAY. WHEN WASHING IS REQUIRED, IT SHALL BE DONE ON AN AREA STABILIZED WITH STONE AND WHICH DRAINS INTO AN APPROVED SEDIMENT TRAPPING DEVICE.
 - PERIODIC INSPECTION AND NEEDED MAINTENANCE SHALL BE PROVIDED AFTER EACH RAIN.

01 STABILIZED CONSTRUCTION ENTRANCE

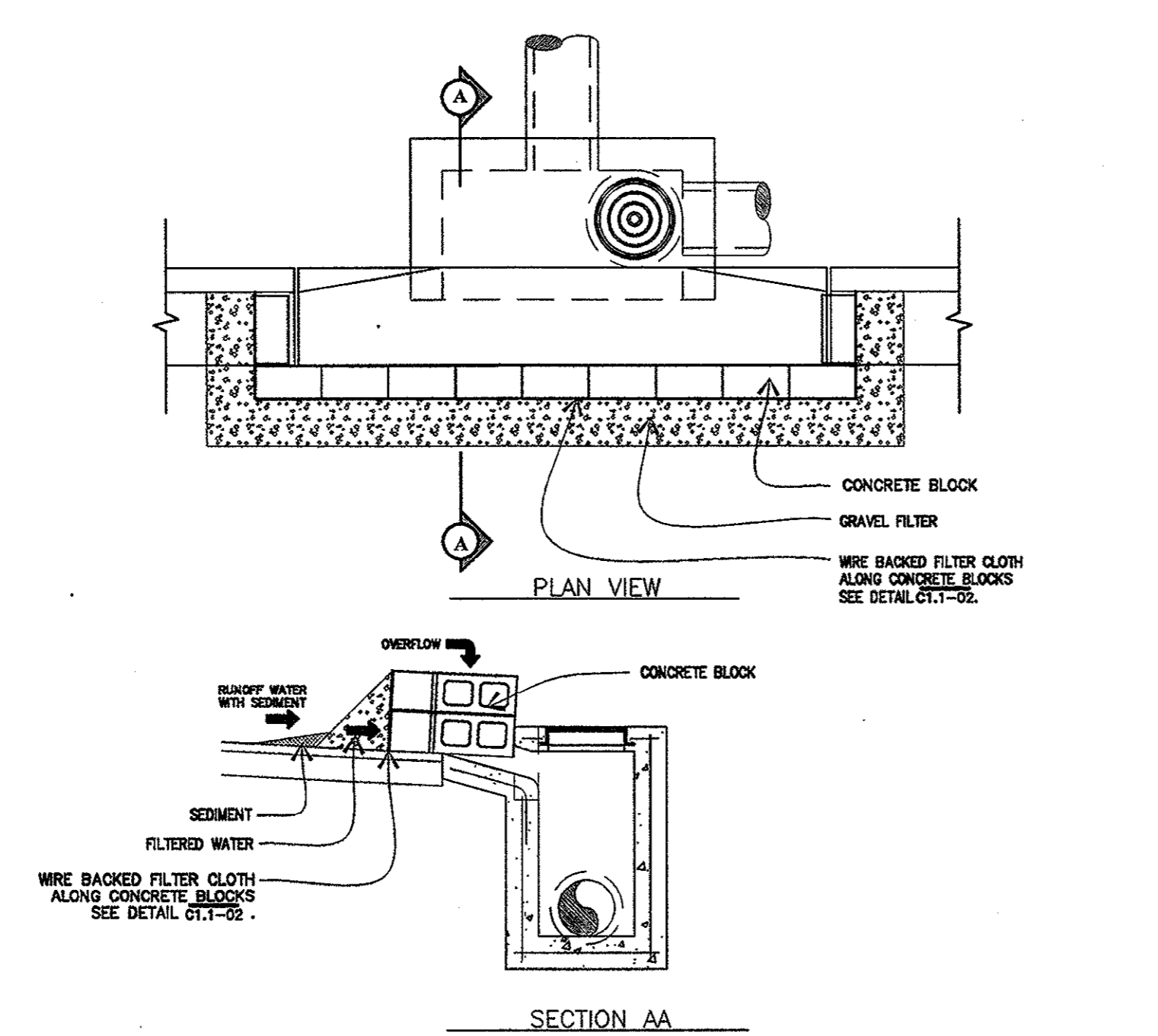
SCALE: NONE



- CONSTRUCTION NOTES FOR FABRICATED SILT FENCE**
- WOVEN WIRE FENCE TO BE FASTENED SECURELY TO FENCE POSTS WITH WIRE TIES.
 - FILTER CLOTH TO BE FASTENED SECURELY TO WOVEN WIRE FENCE WITH TIES SPACED EVERY 24" AT TOP AND MID-SECTION.
 - WHEN TWO SECTIONS OR FILTER CLOTH ADJOIN EACH OTHER THEY SHALL BE OVERLAPPED BY (6) INCHES AND FOLDED.
 - LOCATE POSTS DOWN SLOPE OF FABRIC FOR FENCE SUPPORT.
 - MAINTENANCE SHALL BE PERFORMED AS NEEDED AND MATERIAL REMOVED WHEN "BULGES" DEVELOP IN THE SILT FENCE.
- POSTS: STEEL EITHER "T" OR "U" TYPE
LOCATED MAXIMUM 8' C. C.
WOVEN WIRE: WOVEN WIRE: 14 1/2 GA. 6" MAX. MESH OPENING
FILTER CLOTH: FILTER X, MIRAFI 100X, STABI-LINKA T140N OR APPROVED EQUAL.
1. PREFABRICATED UNIT: GEOFAB, ENVROFENCE, OR APPROVED EQUAL.
- F. MULCH FILTER BERM OR TUBULAR EROSION CONTROL LOGS MAY BE AN ACCEPTABLE ALTERNATE. VERIFY WITH SEDIMENT CONTROL INSPECTOR PRIOR TO INSTALLATION.

02 SILT FENCE

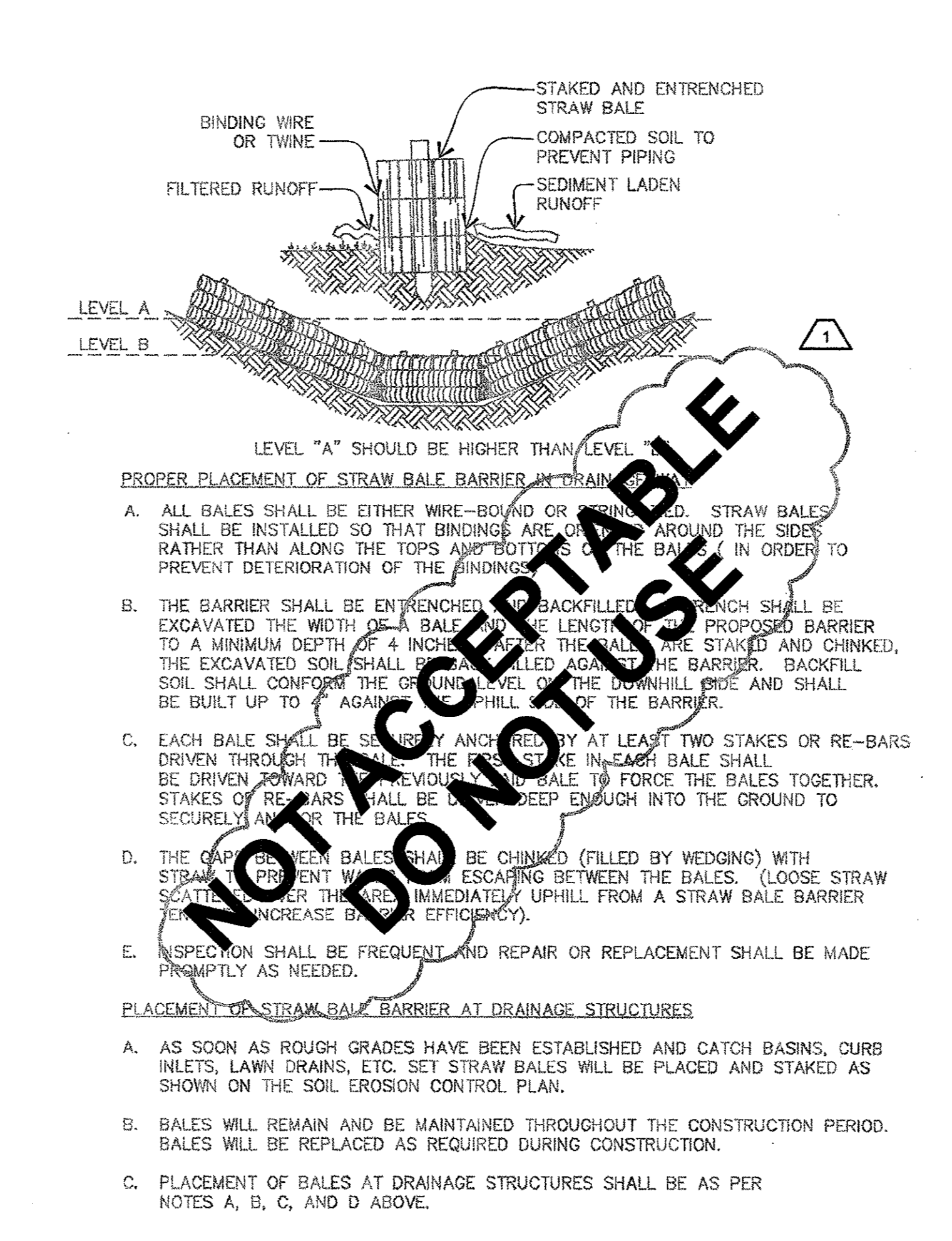
SCALE: NONE



- GENERAL NOTES**
- PLACE CONCRETE BLOCKS LENGTHWISE ON THEIR SIDES IN A SINGLE ROW AROUND THE PERIMETER OF THE INLET, WITH THE ENDS OF ADJACENT BLOCKS ABUTTING. THE HEIGHT OF THE BARRIER CAN BE VARIED, DEPENDING ON DESIGN NEEDS, BY STACKING COMBINATIONS OF 4-INCH, 8-INCH AND 12-INCH WIDE BLOCKS. THE BARRIER OF BLOCKS SHALL BE AT LEAST 12 INCHES HIGH AND NO GREATER THAN 24 INCHES HIGH.
 - WIRE MESH SHALL BE PLACED OVER THE OUTSIDE VERTICAL FACE (WEBBING) OF THE CONCRETE BLOCKS TO PREVENT STONE FROM BEING WASHED THROUGH THE HOLES IN THE BLOCKS. TO PREVENT STONE FROM BEING WASHED THROUGH THE HOLES IN THE BLOCKS. HARDWARE CLOTH OF COMPARABLE WIRE MESH WITH 1/2-INCH OPENINGS SHALL BE USED.
 - STONE SHALL BE PILED AGAINST THE TOP OF THE BLOCK BARRIER, AS SHOWN. AASHTO-57 COURSE AGGREGATE SHALL BE USED.
 - IF THE STONE FILTER BECOMES CLOGGED WITH SEDIMENT SO THAT IT NO LONGER ADEQUATELY PERFORMS IT FUNCTION, THE STONE MUST BE PULLED AWAY FROM THE BLOCKS, CLEANED AND REPLACED

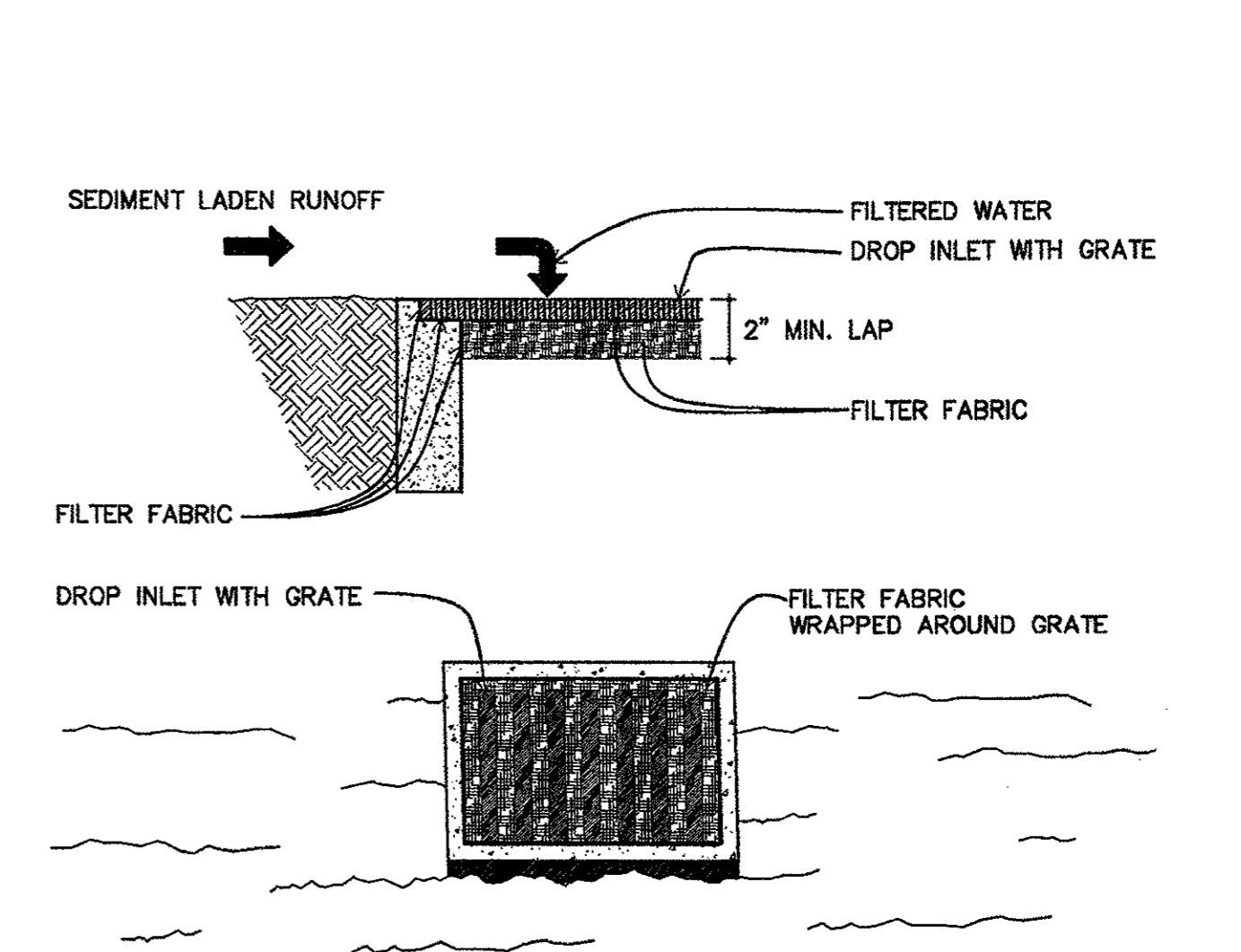
03 CURB INLET PROTECTION

SCALE: NONE



04 HAY BALES

SCALE: NONE



- INLET PROTECTION**
- CONTRACTOR TO PROVIDE FILTER FABRIC OVER THE GRATE WITH A TWO INCH (2") MINIMUM LAP AS SHOWN.
- MAINTENANCE:
CONTRACTOR TO CLEAN FILTER AFTER EVERY STORM. IF THE FABRIC BECOMES CLOGGED WITH SEDIMENT SO THAT IT NO LONGER ADEQUATELY PASSES FILTERED WATER, THE SEDIMENT SHALL BE REMOVED AND THE FABRIC SHALL BE REPLACED. REMOVED SEDIMENT SHALL BE DEPOSITED IN A SUITABLE AREA AND IN SUCH A MANNER THAT IT WILL NOT ERODE. THE FABRIC SHALL BE REMOVED WHEN THE DRAINAGE AREA HAS BEEN ADEQUATELY STABILIZED.

05 GRATE INLET PROTECTION

SCALE: NONE