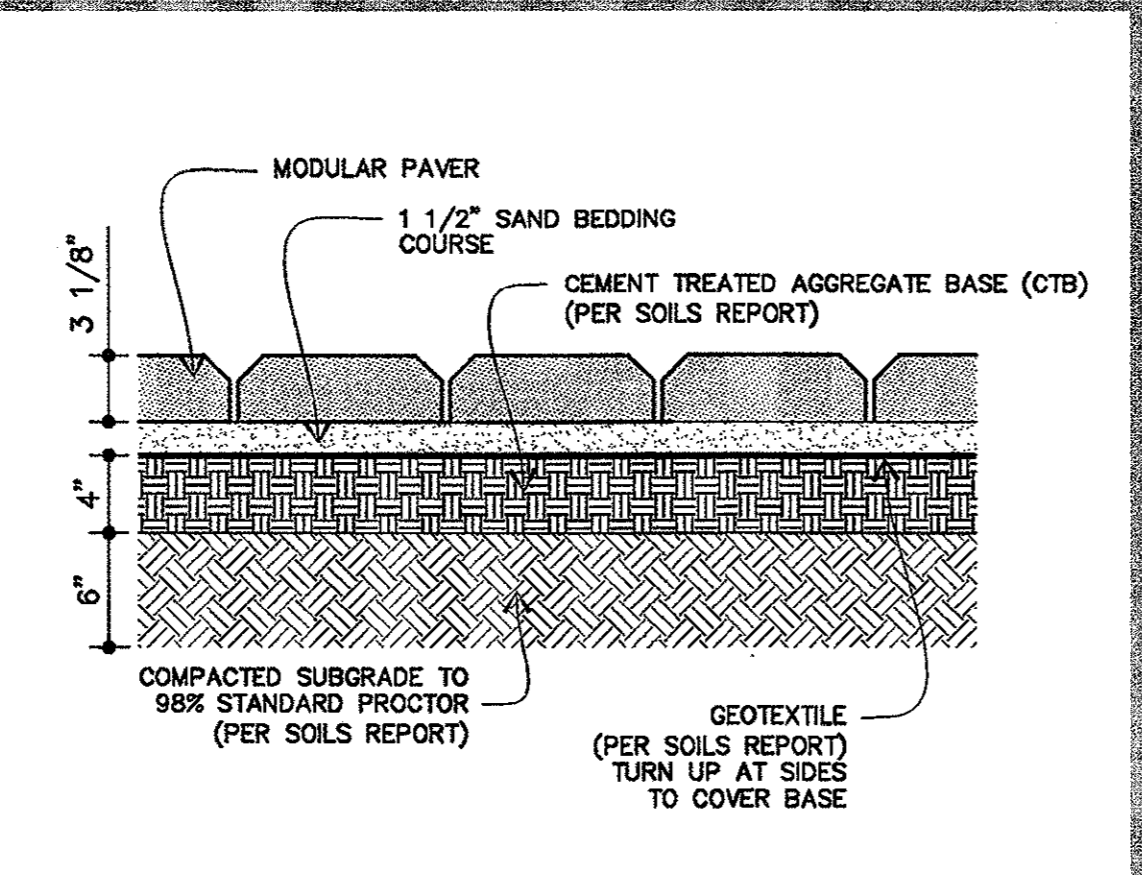
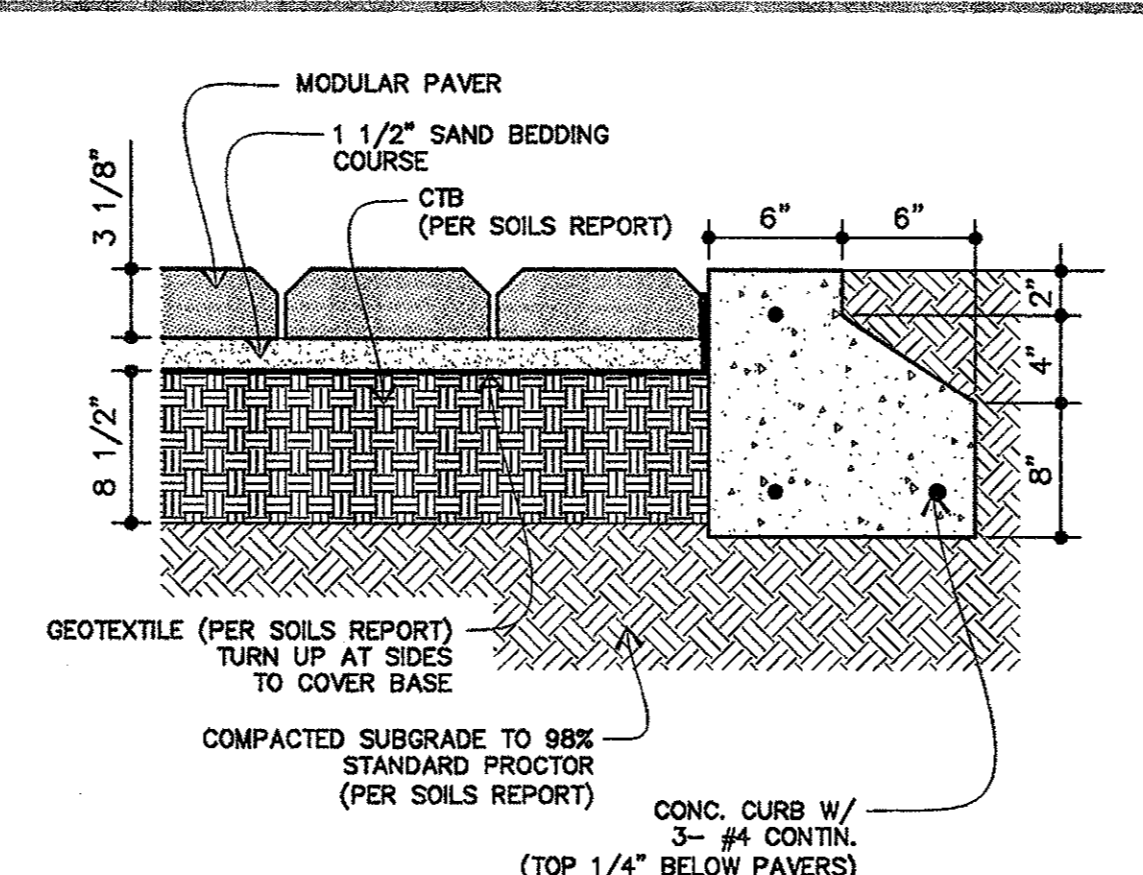


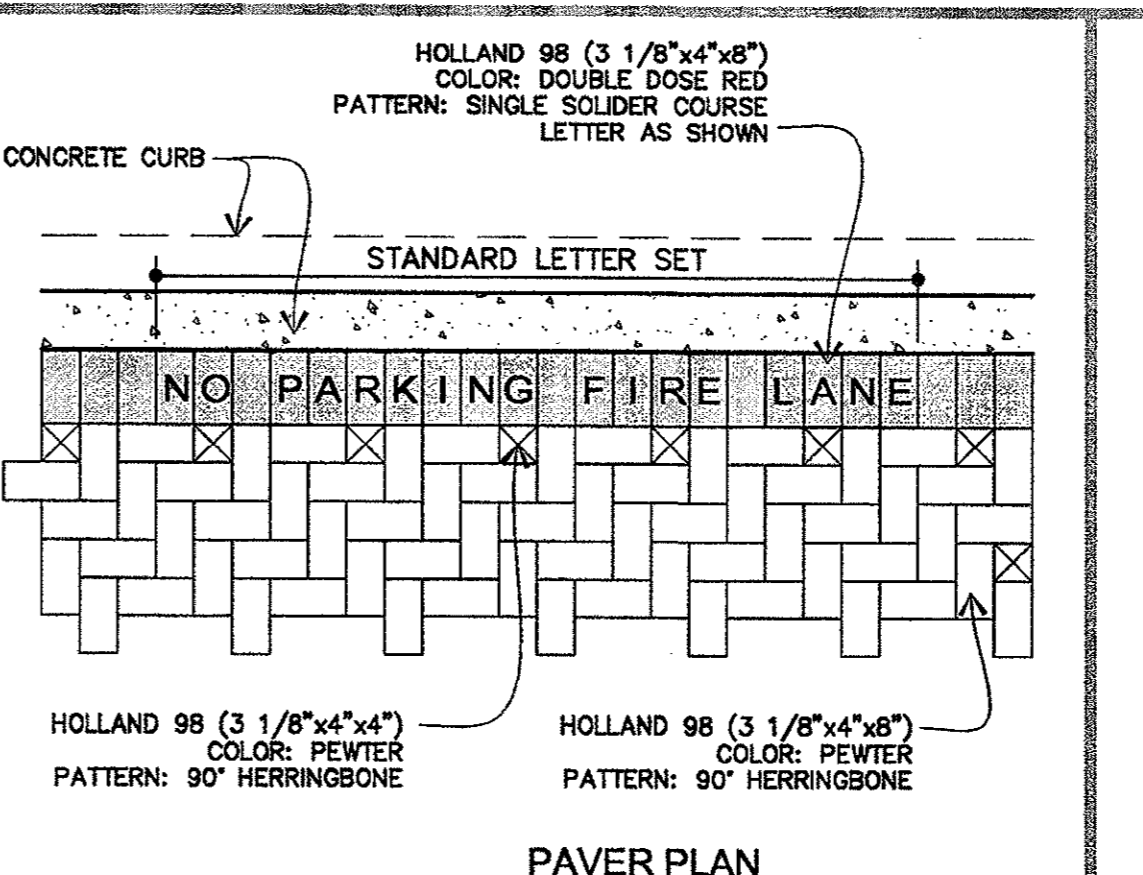
**01 MODULAR BLOCK PAVING**  
SCALE: NONE



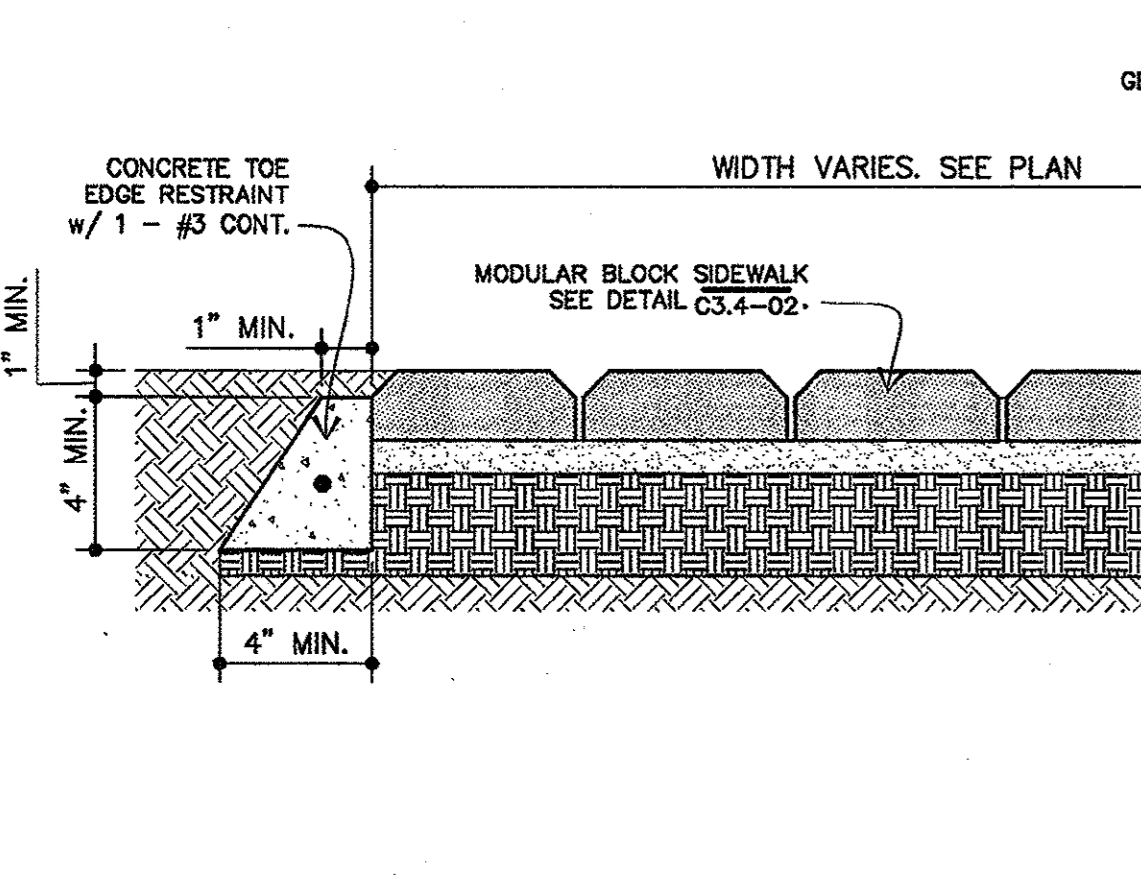
**02 MODULAR BLOCK SIDEWALK**  
SCALE: NONE



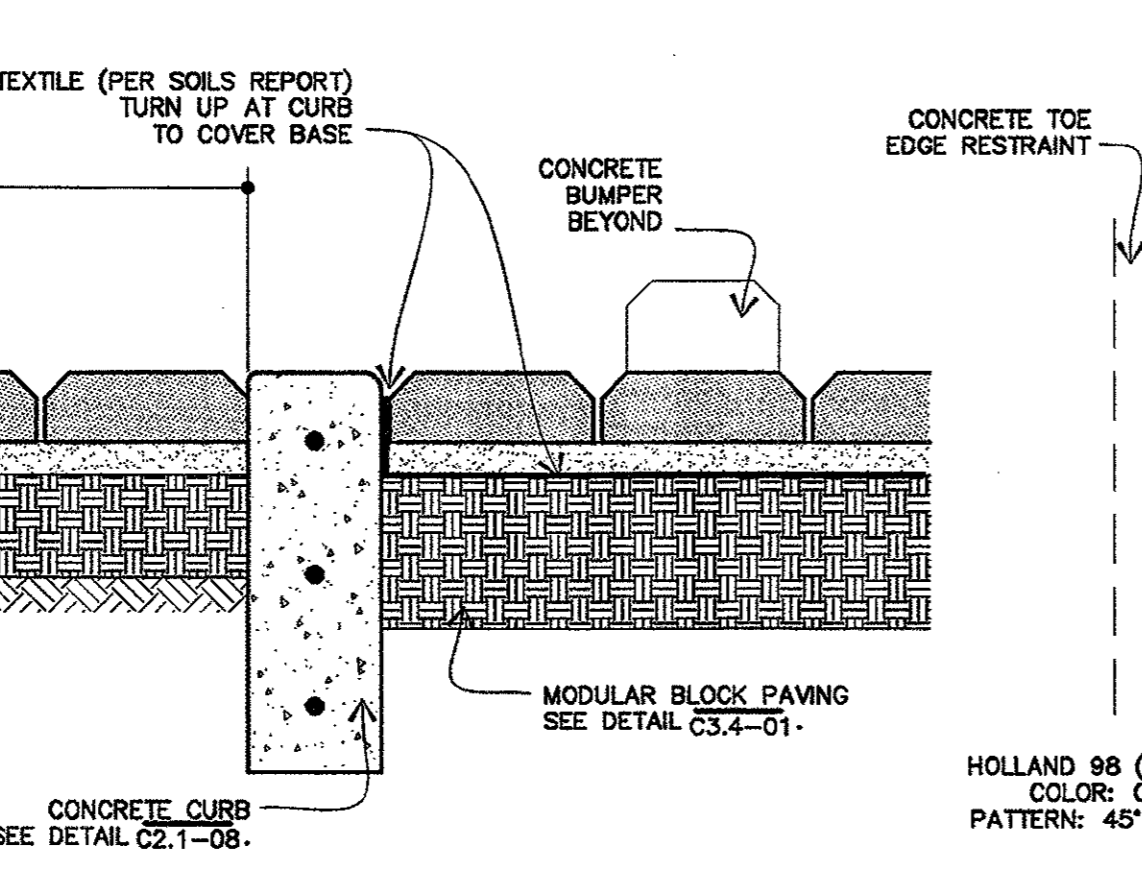
**03 PAVERS AT ACCESS ROAD (STANDARD PAVEMENT)**  
SCALE: NONE



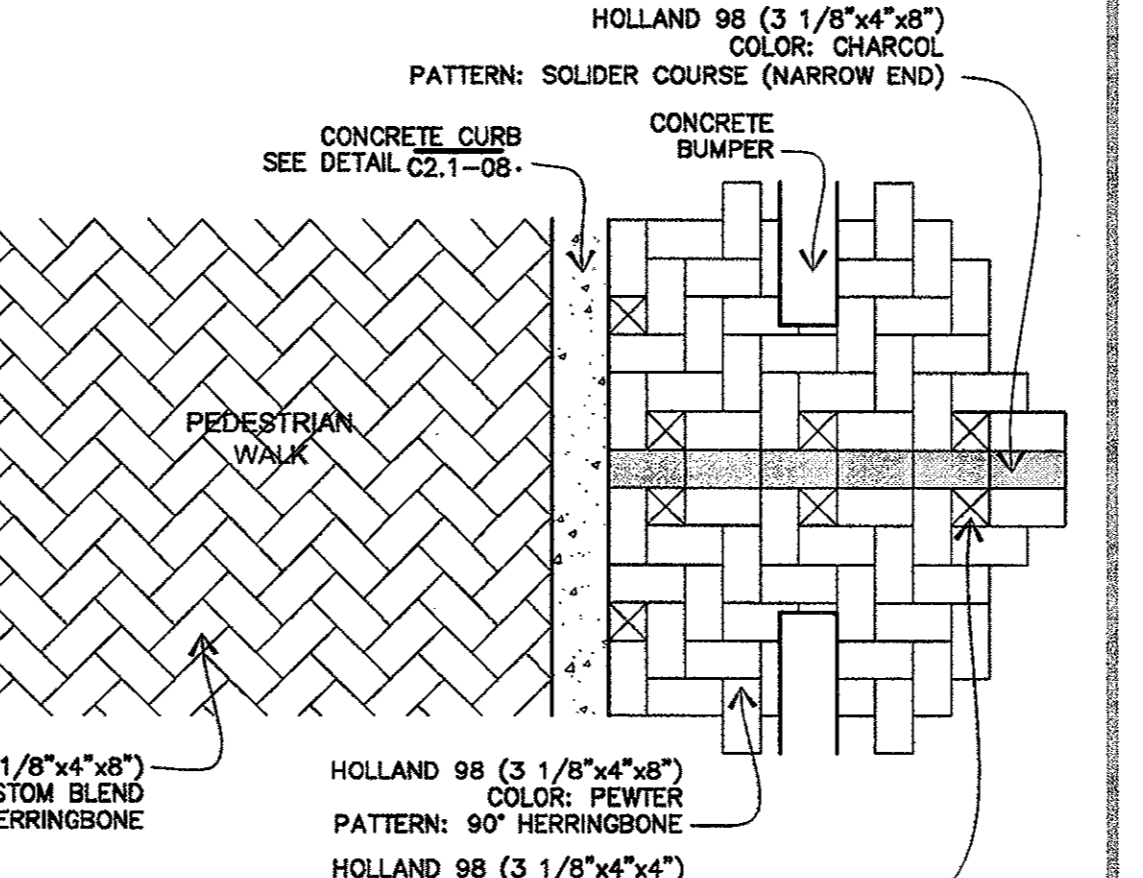
**04 PAVERS AT VERTICAL CURB**  
SCALE: NONE



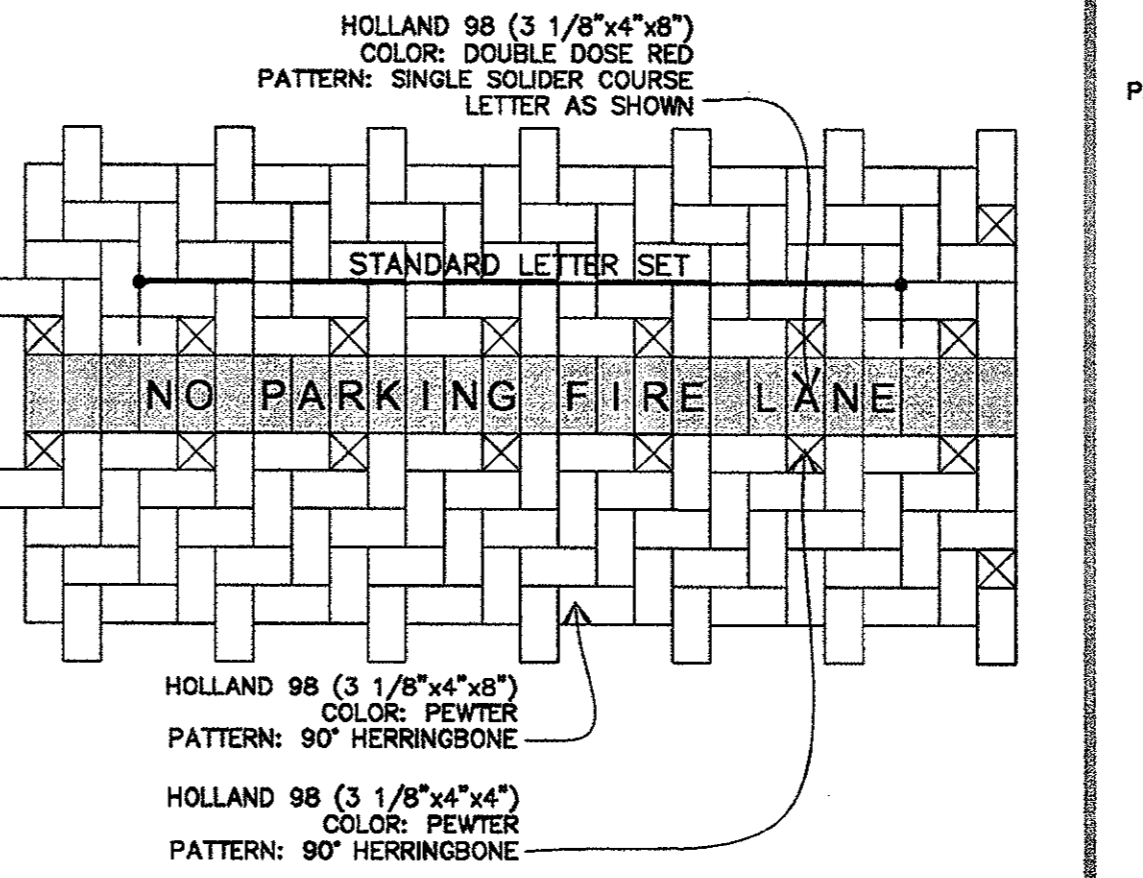
**05 MODULAR BLOCK SIDEWALK AT ENTRY**  
SCALE: NONE



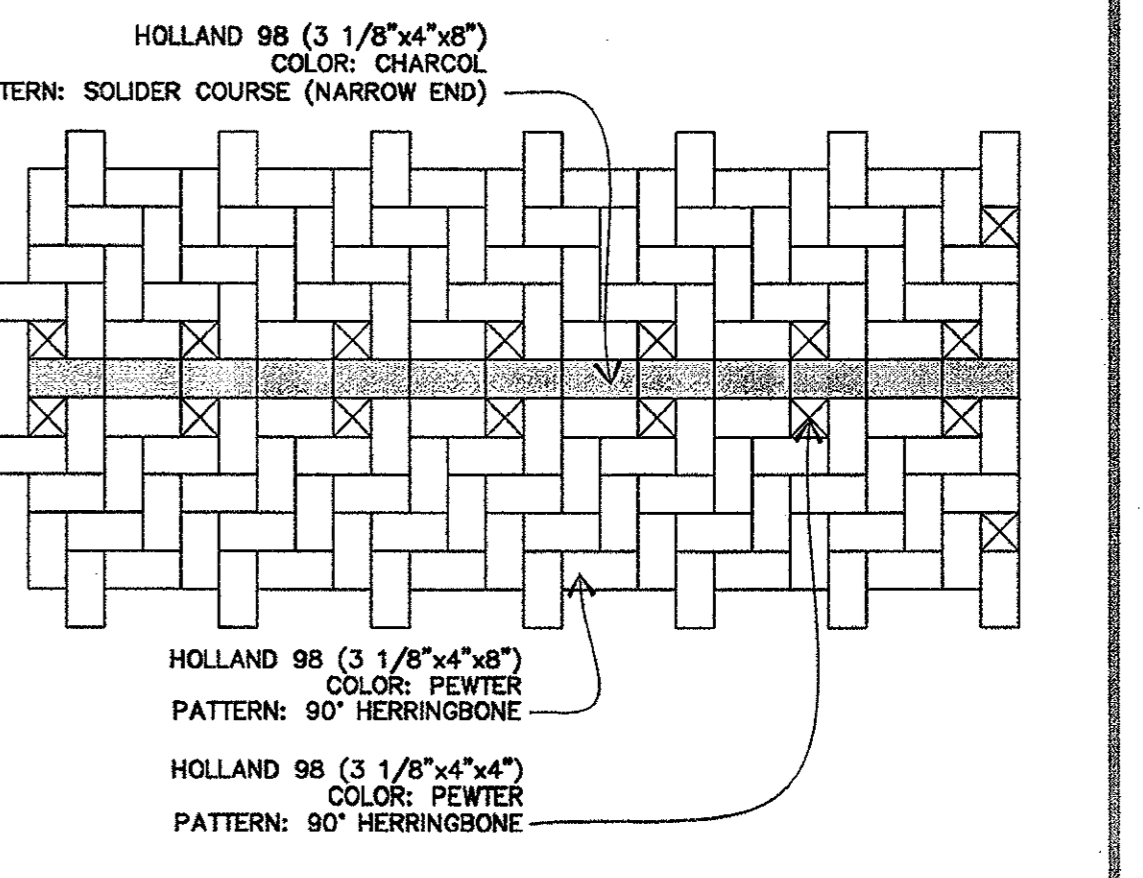
**06 FIRE LANE PAVERS**  
SCALE: NONE



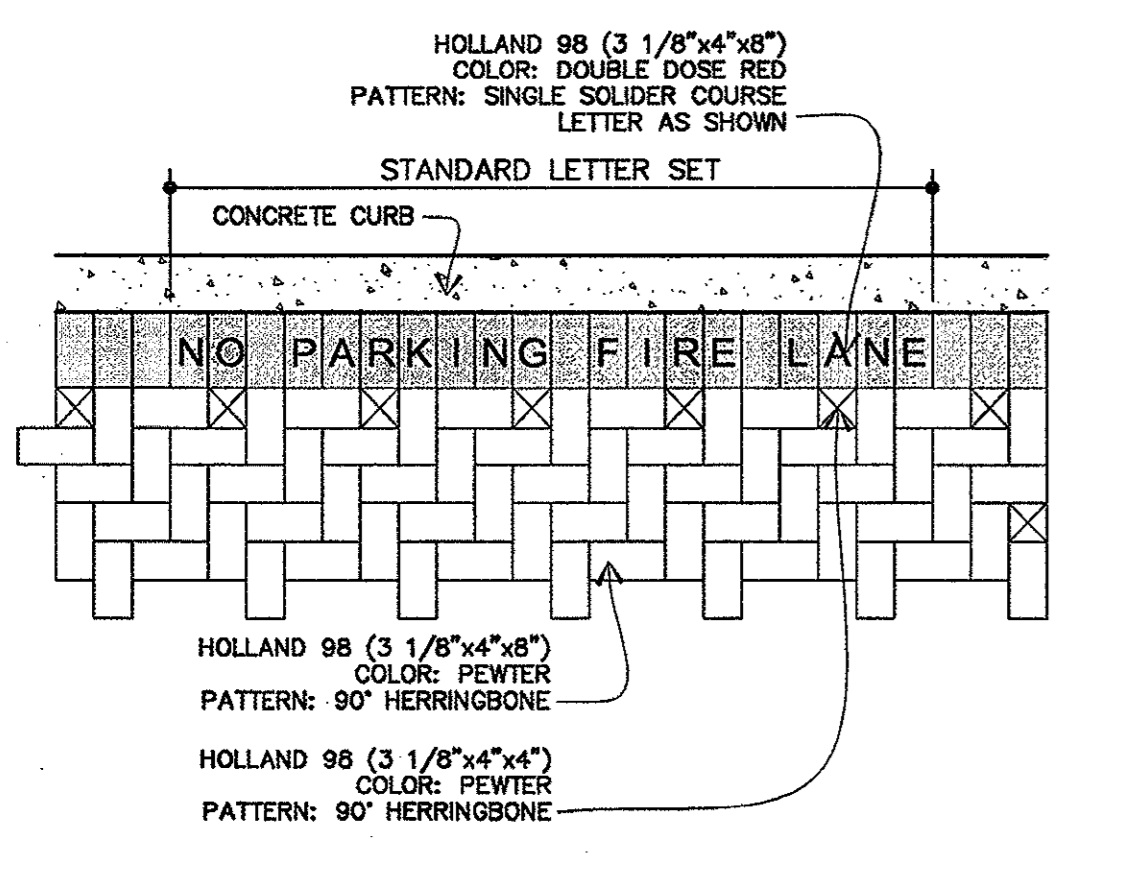
**07 PARKING STRIPE PAVERS**  
SCALE: NONE



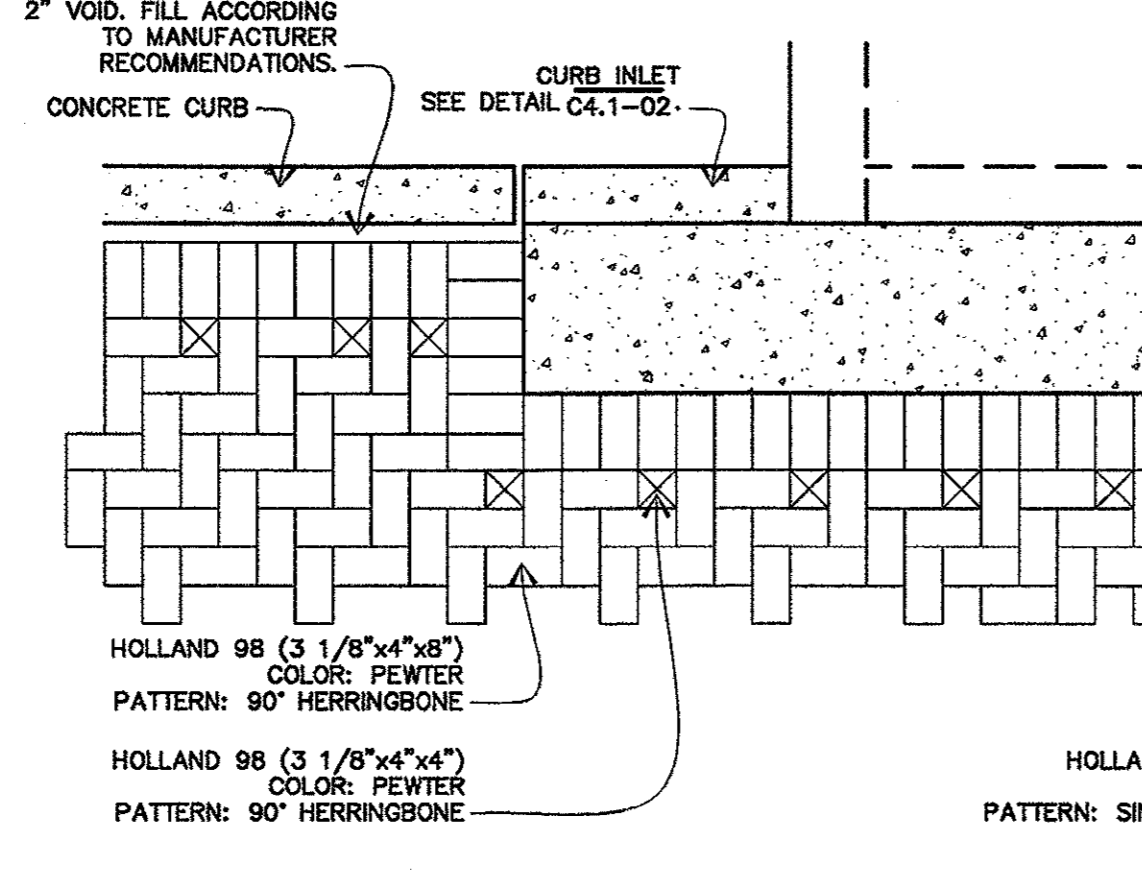
**08 FIRE LANE PAVERS AT VERT. CURB**  
SCALE: NONE



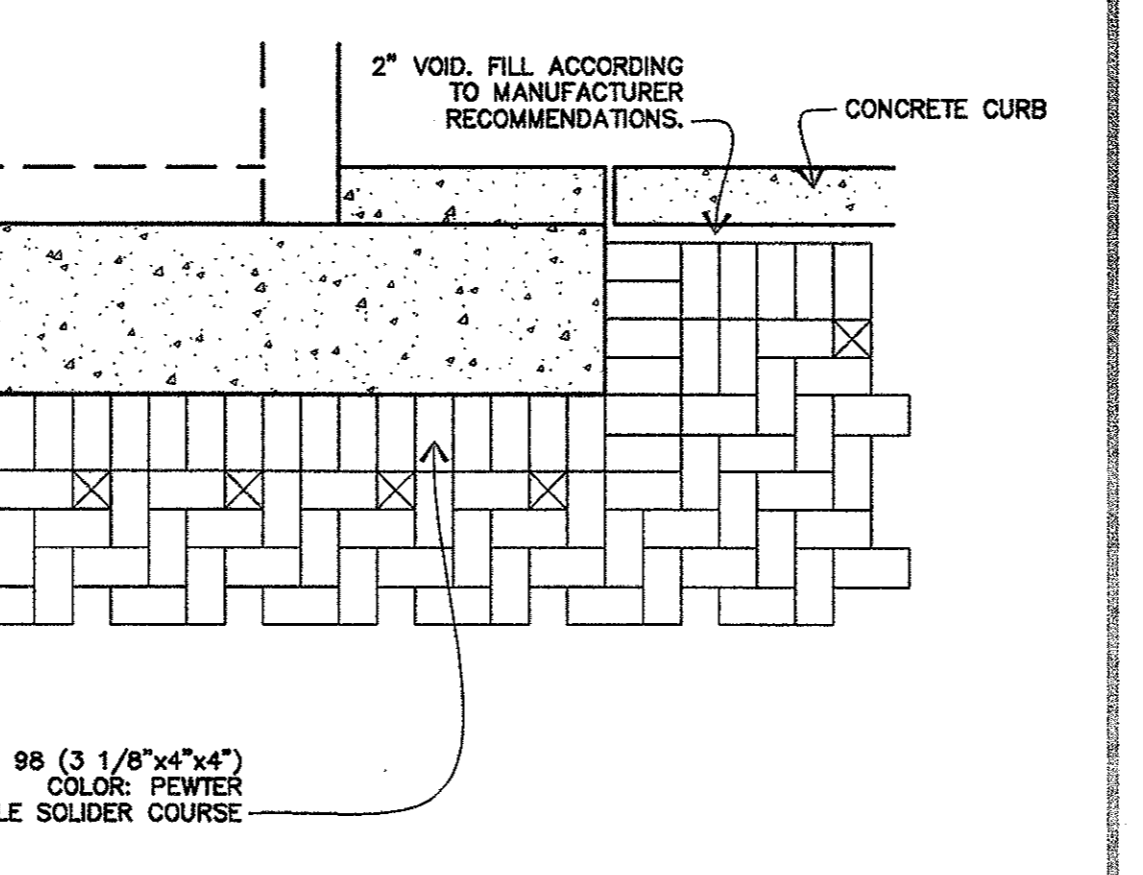
**09 PAVERS AT CURB INLET**  
SCALE: NONE



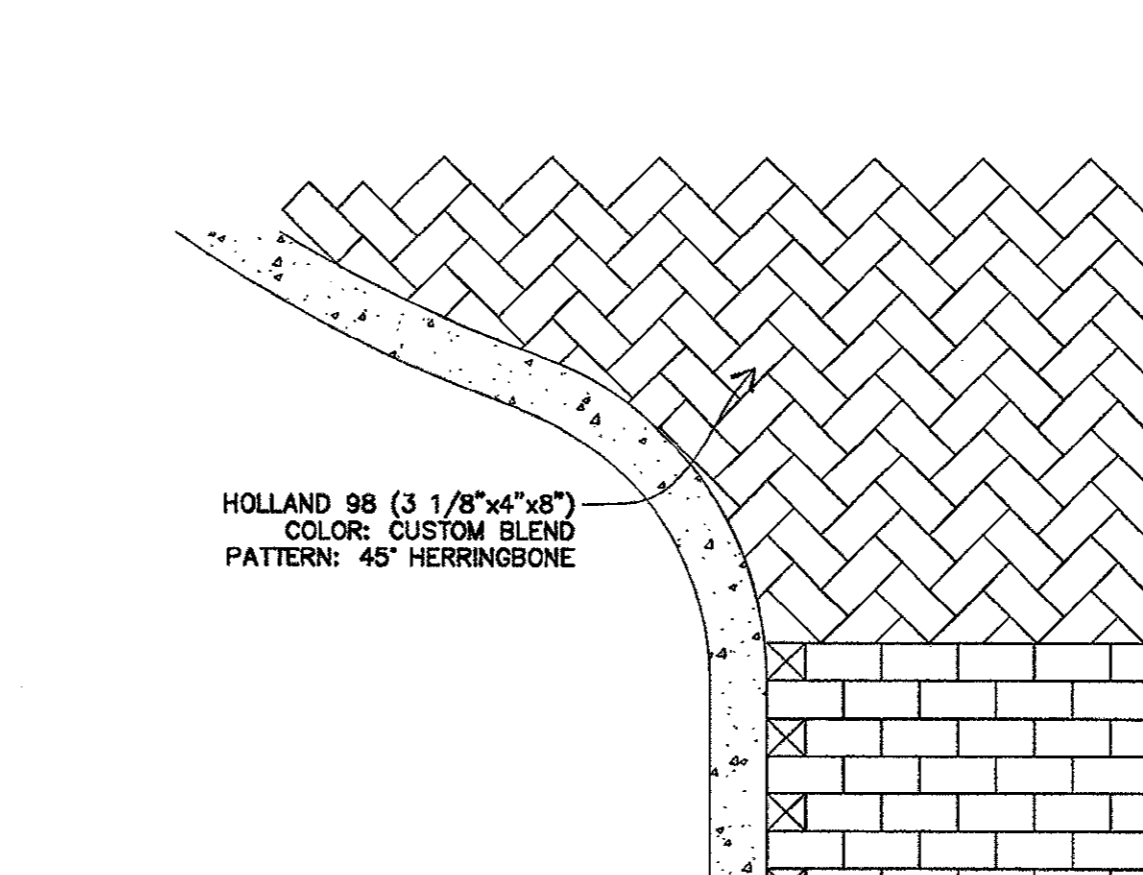
**10 ACCESS ROAD (HEAVY DUTY)**  
SCALE: NONE



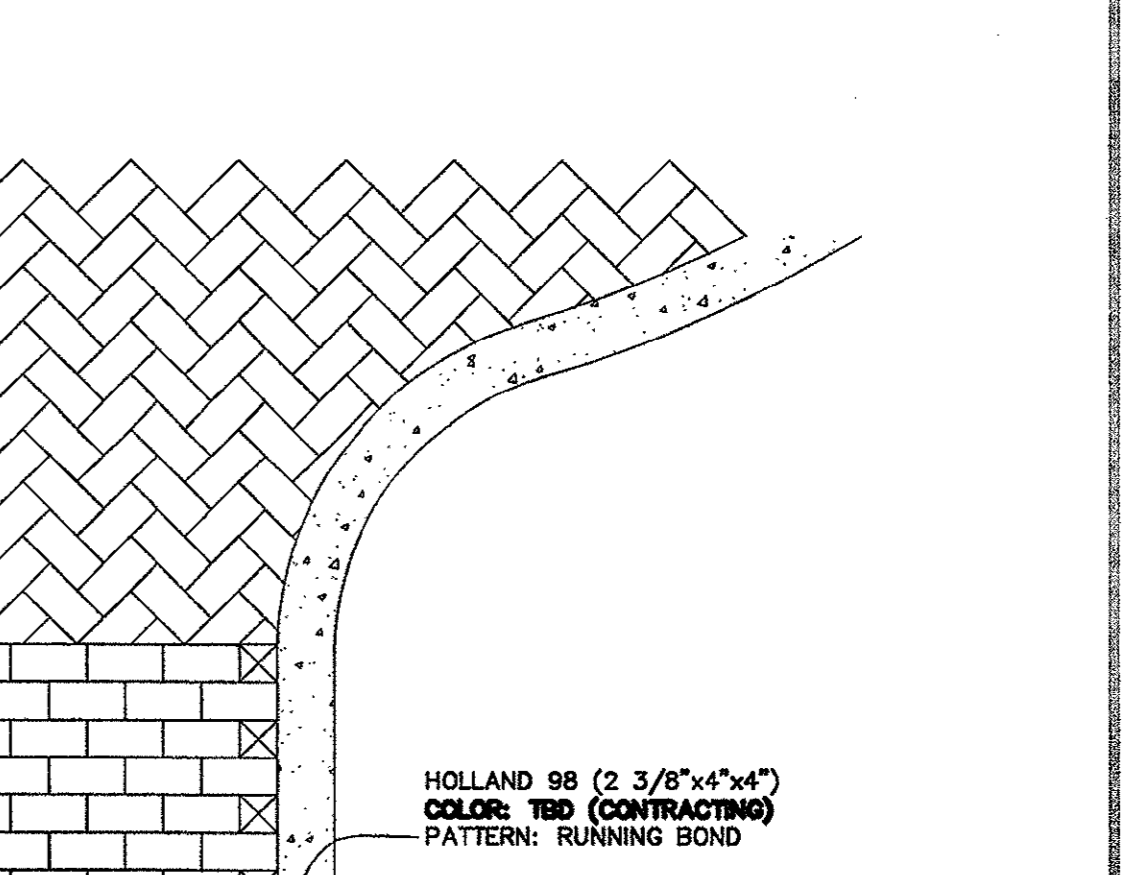
**11 ACCESS ROAD (PAVING TRANSITION)**  
SCALE: NONE



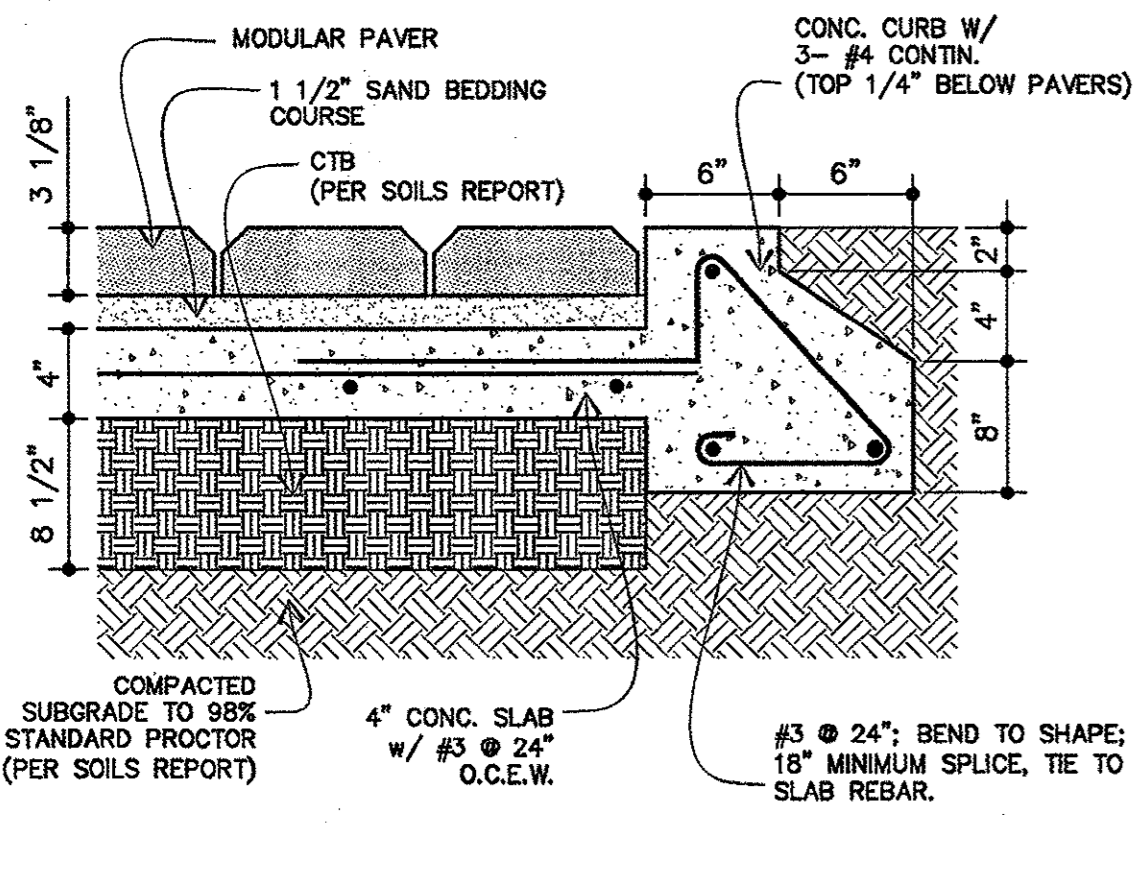
**12 PAVERS AT HANDICAP RAMP**  
SCALE: NONE



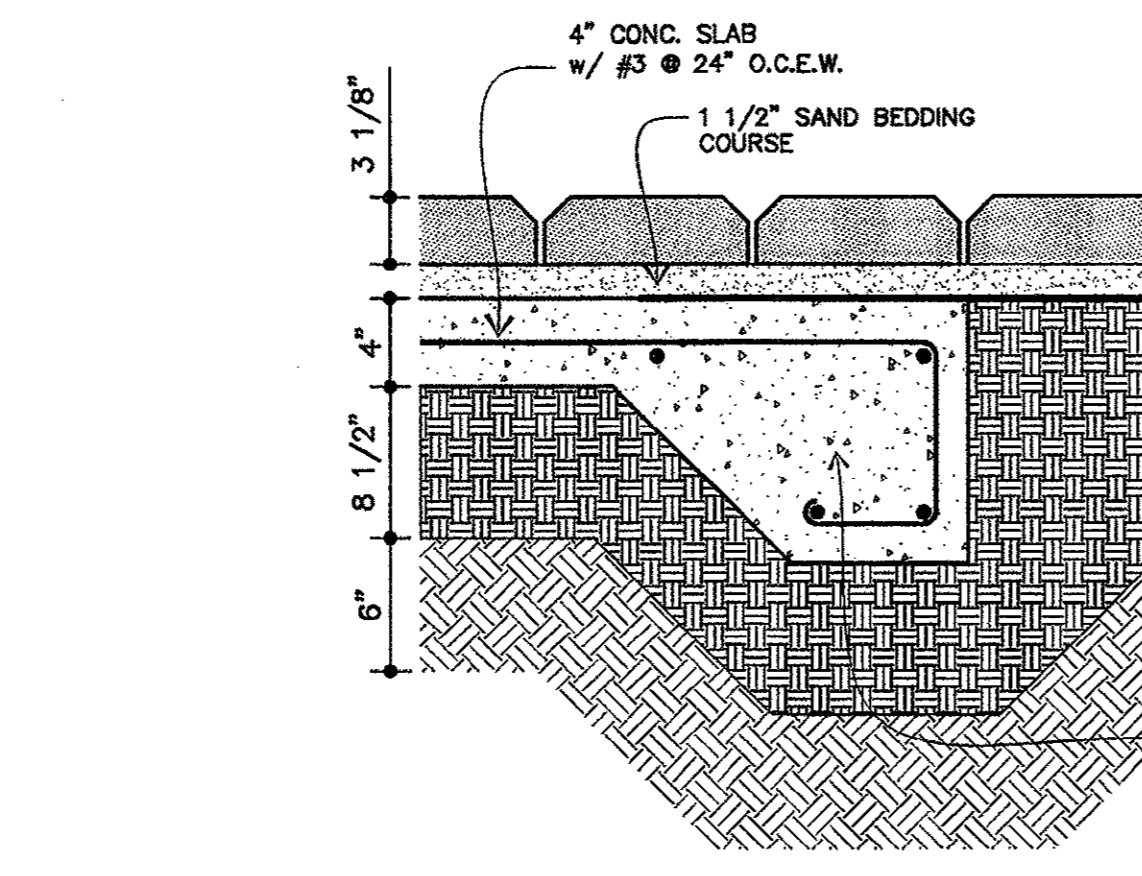
**11 ACCESS ROAD (PAVING TRANSITION)**  
SCALE: NONE



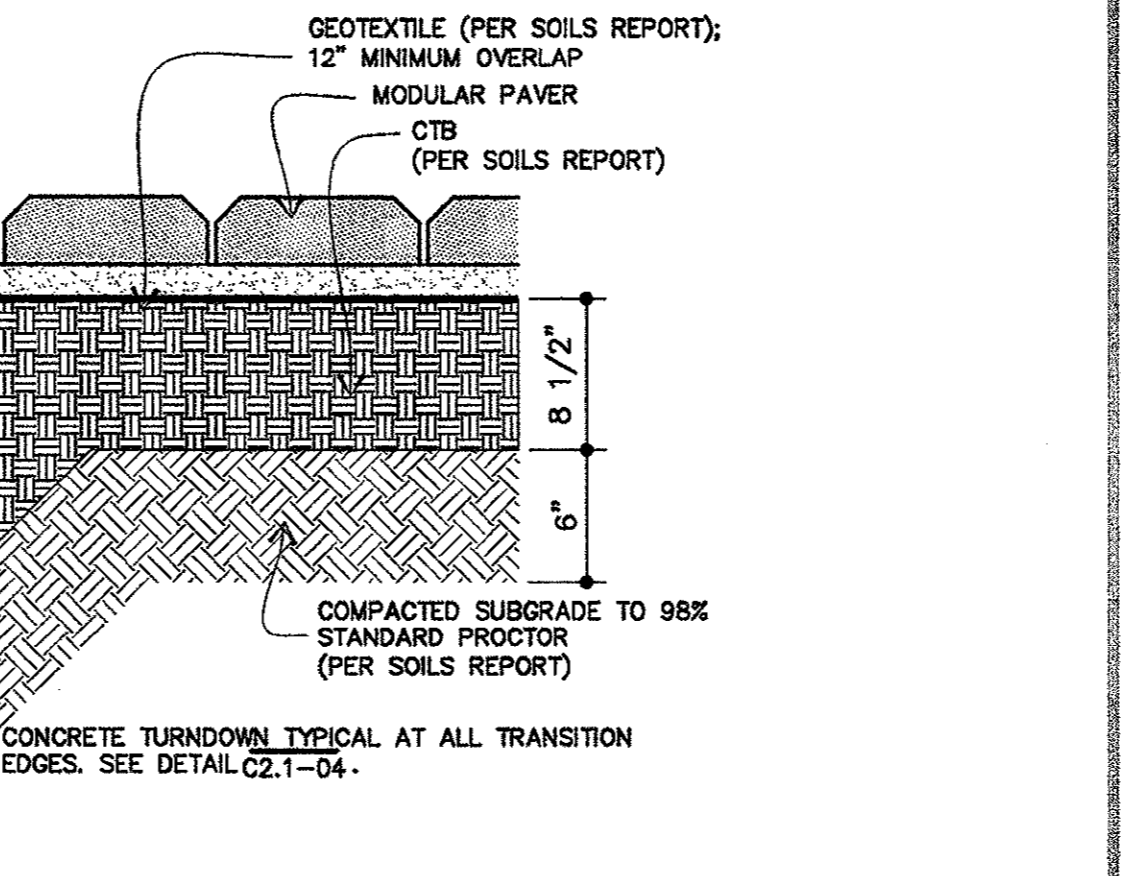
**12 PAVERS AT HANDICAP RAMP**  
SCALE: NONE



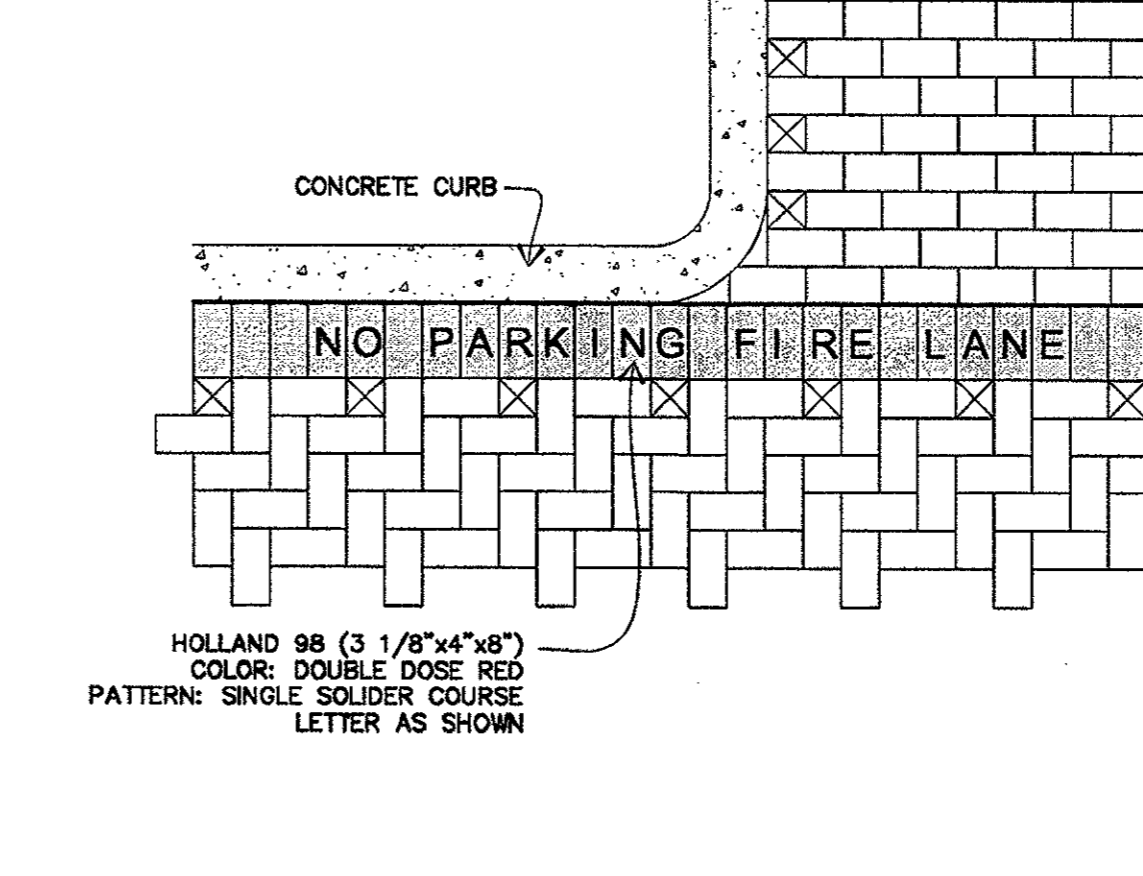
**10 ACCESS ROAD (HEAVY DUTY)**  
SCALE: NONE



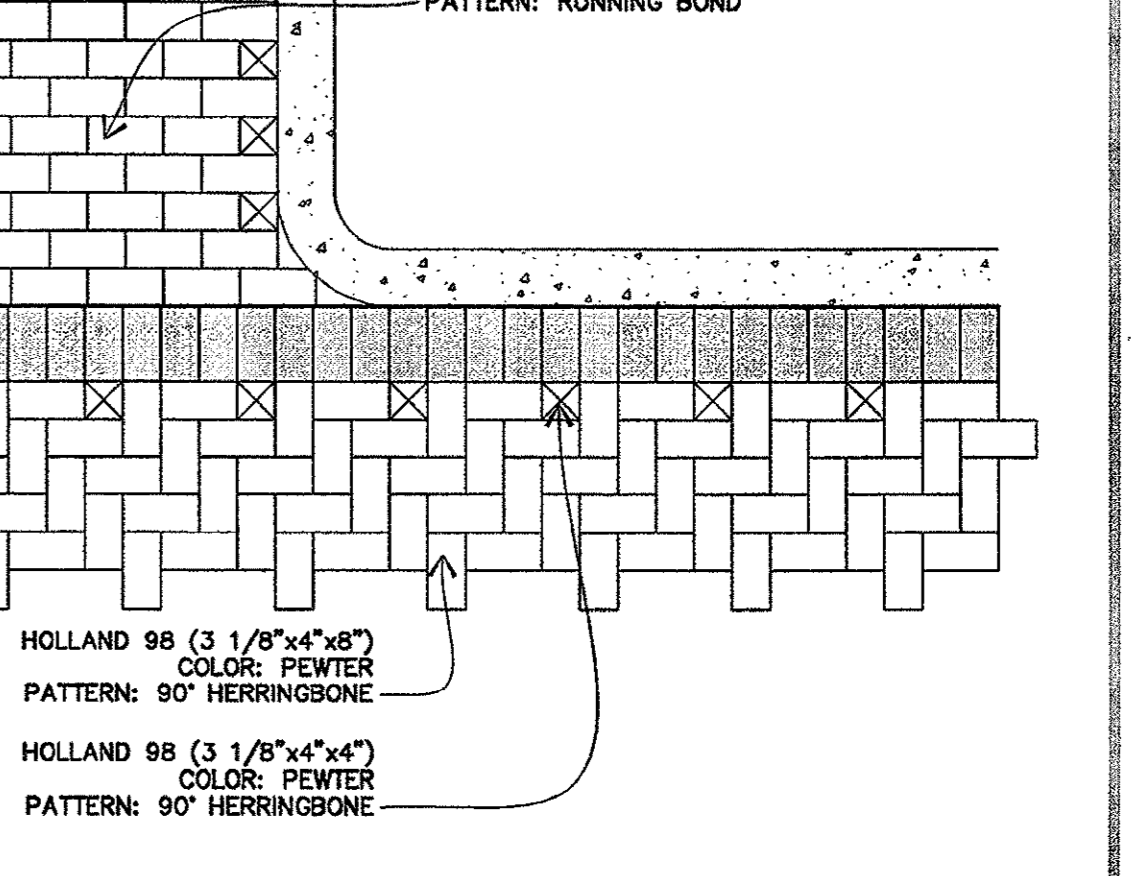
**11 ACCESS ROAD (PAVING TRANSITION)**  
SCALE: NONE



**12 PAVERS AT HANDICAP RAMP**  
SCALE: NONE



**12 PAVERS AT HANDICAP RAMP**  
SCALE: NONE



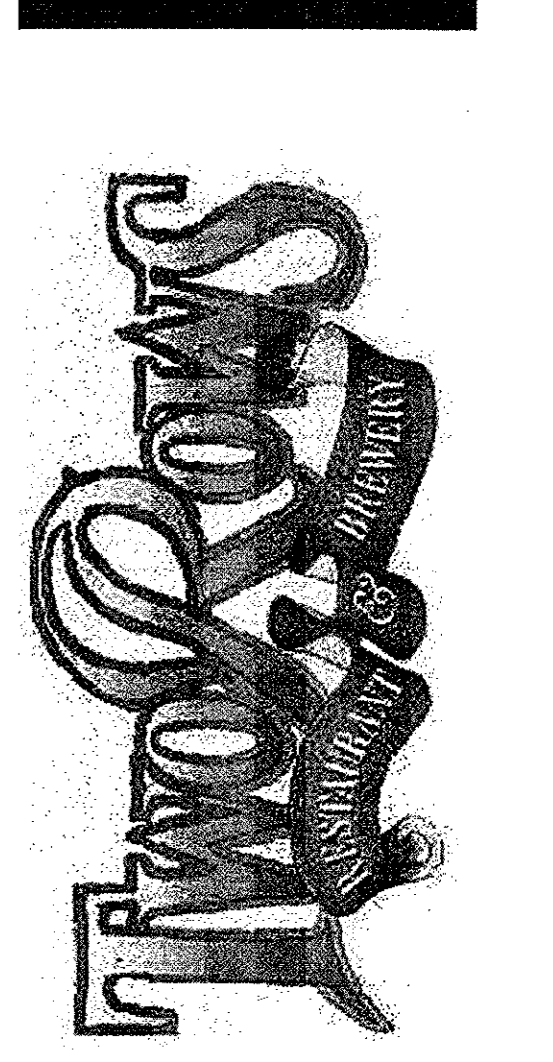
**12 PAVERS AT HANDICAP RAMP**  
SCALE: NONE

**wd partners**

2350 Valley View Lane  
Suite 100  
Dallas, Texas 75234-5734  
T 214.351.5400  
F 214.351.2095  
info@wdpartners.com  
wdpartners.com

Dallas  
Columbus  
Los Angeles  
Chicago  
Miami

expesite.com



17225 Dallas Parkway  
Addison, TX



REVISIONS

1	12/19/02 (City)
---	-----------------

PROTOTYPE

STORE NUMBER

WD PROJECT NUMBER  
0000.659-00

**C3.4 PAVING DETAILS**