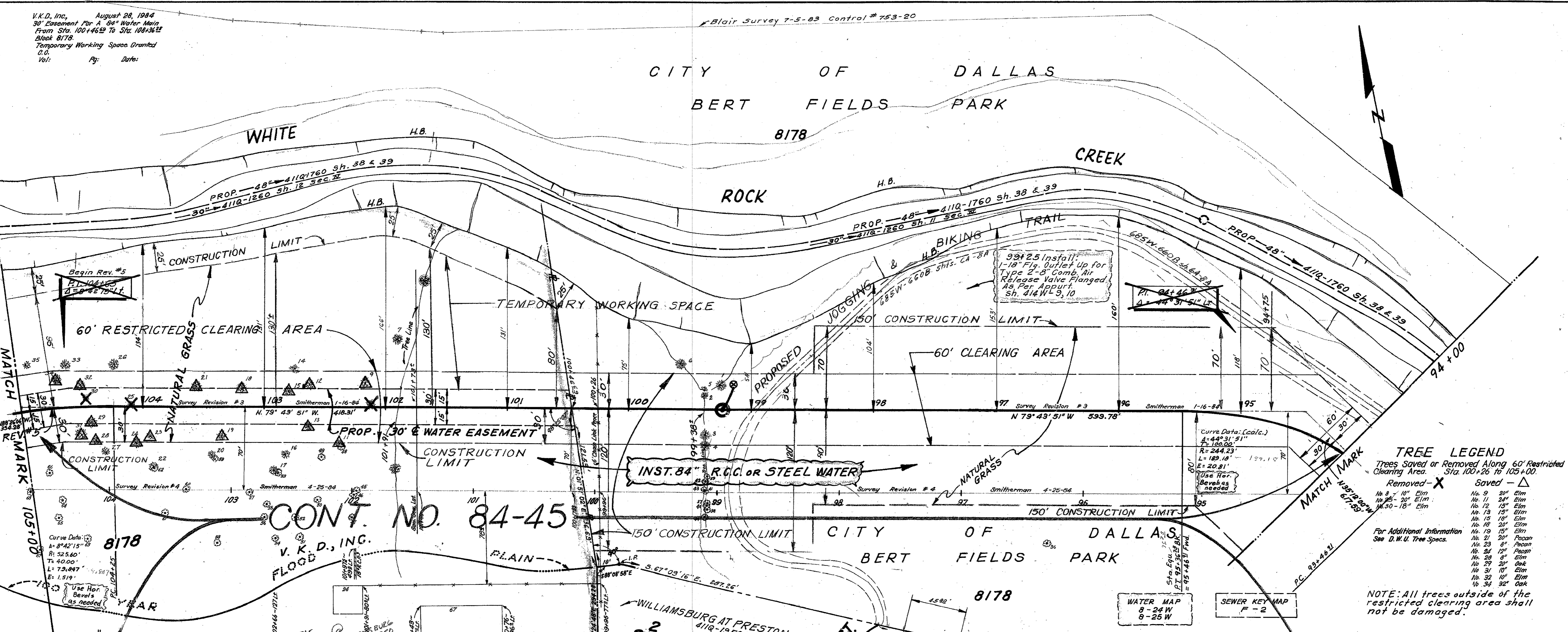


Sta.	Tree	Size	Remarks
1	99+25	20"	Hackberry
2	99+37	21"	Hackberry
3	99+37	29"	Hackberry
4	99+37	29"	Hackberry
5	99+37	29"	Hackberry
6	99+37	29"	Hackberry
7	101+11	21"	Elm
8	102+11	21"	Elm
9	102+16	20"	Elm
10	102+38	31"	Elm
11	102+69	17"	Elm
12	102+74	16"	Elm
13	102+74	31"	Elm
14	102+74	18"	Elm
15	102+79	18"	Elm
16	102+82	40"	Hackberry
17	102+91	53"	Elm
18	103+18	26"	Elm
19	103+30	26"	Elm
20	103+43	40"	Elm
21	103+56	17"	Pecan
22	103+76	29"	Pecan
23	103+95	25"	Pecan
24	104+06	30"	Elm
25	104+09	11"	Elm
26	104+28	8"	Elm
27	104+30	34"	Elm
28	104+39	28"	Elm
29	104+42	13"	Oak
30	104+46	28"	Oak
31	104+50	24"	Elm
32	104+51	17"	Elm
33	104+53	10"	Elm
34	104+72	21"	Oak
35	104+72	8"	Oak

V.K.D. Inc. August 28, 1984  
 30' Easement For 84" Water Main  
 From Sta. 100+46.9' To Sta. 105+36.2'  
 Block 8178  
 Temporary Working Space Granted  
 C.O.  
 Vol: Pg: Date:

Revision #	Date	Description
1	8-28-84	Issue
2	9-10-84	Begin Rev. #5
3	9-10-84	Begin Rev. #5
4	9-10-84	Begin Rev. #5
5	9-10-84	Begin Rev. #5
6	9-10-84	Begin Rev. #5
7	9-10-84	Begin Rev. #5
8	9-10-84	Begin Rev. #5
9	9-10-84	Begin Rev. #5
10	9-10-84	Begin Rev. #5
11	9-10-84	Begin Rev. #5
12	9-10-84	Begin Rev. #5
13	9-10-84	Begin Rev. #5
14	9-10-84	Begin Rev. #5
15	9-10-84	Begin Rev. #5
16	9-10-84	Begin Rev. #5
17	9-10-84	Begin Rev. #5
18	9-10-84	Begin Rev. #5
19	9-10-84	Begin Rev. #5
20	9-10-84	Begin Rev. #5
21	9-10-84	Begin Rev. #5
22	9-10-84	Begin Rev. #5
23	9-10-84	Begin Rev. #5
24	9-10-84	Begin Rev. #5
25	9-10-84	Begin Rev. #5
26	9-10-84	Begin Rev. #5
27	9-10-84	Begin Rev. #5
28	9-10-84	Begin Rev. #5
29	9-10-84	Begin Rev. #5
30	9-10-84	Begin Rev. #5
31	9-10-84	Begin Rev. #5
32	9-10-84	Begin Rev. #5
33	9-10-84	Begin Rev. #5
34	9-10-84	Begin Rev. #5
35	9-10-84	Begin Rev. #5

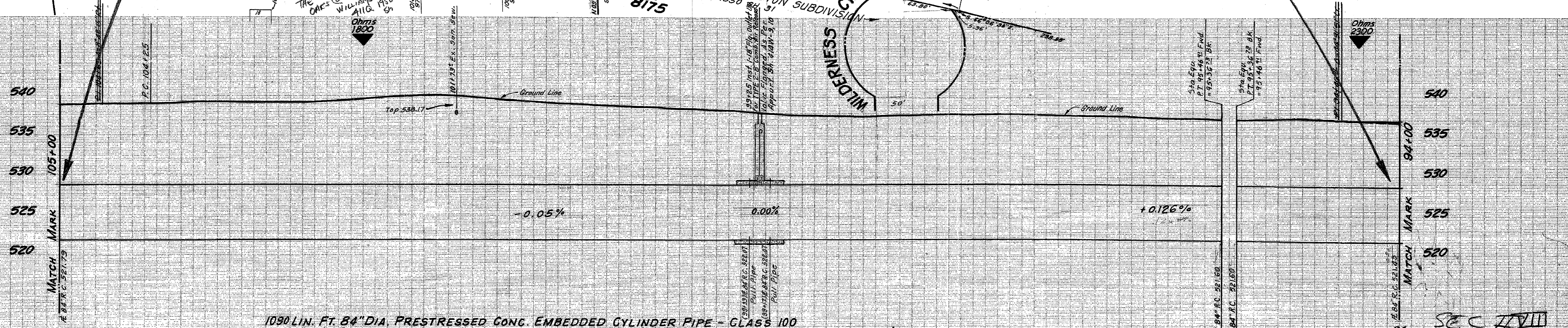


**TREE LEGEND**  
 Trees Saved or Removed Along 60' Restricted Clearing Area. Sta. 100+26 to 105+00.

Removed - X	Saved - Δ
No. 9	20" Elm
No. 11	24" Elm
No. 12	15" Elm
No. 13	15" Elm
No. 15	15" Elm
No. 18	20" Elm
No. 19	20" Elm
No. 21	20" Pecan
No. 23	8" Pecan
No. 24	12" Pecan
No. 28	8" Elm
No. 29	20" Oak
No. 31	10" Elm
No. 32	10" Elm
No. 34	32" Oak

For Additional Information See D.W.U. Tree Specs.

NOTE: All trees outside of the restricted clearing area shall not be damaged.

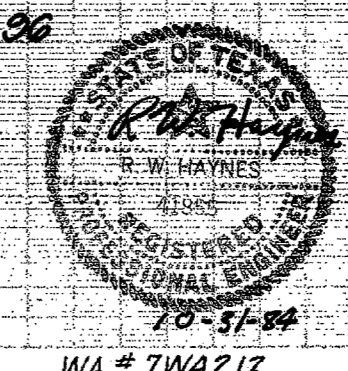


1090 LIN. FT. 84" DIA. PRESTRESSED CONC. EMBEDDED CYLINDER PIPE - CLASS 100  
 ALTERNATE: 1090 LIN. FT. 84" DIA. STEEL PIPE (AS PER PART "T" SPECIAL SPECIFICATIONS)

B.M. "X" Cut in Top Conc. Curb on S. Survey  
 N. Curb SPRING VALLEY RD @ 454.1 E.  
 End of Bridge over WHITE ROCK CREEK  
 Elev. 548.04

B.M. Sta. W.D.B.M. on S.E. Cor. of Conc. Bridge  
 of WHITE ROCK CREEK & PRESTON ROAD  
 Elev. 554.05

T.B.M. Top L.R. of Sta. 115+54.35  
 of Original Survey  
 Elev. 541.62



84" R.C. WATER MAIN					
ALONG WHITE ROCK CREEK					
FROM SPRING VALLEY TO DALLAS N. PKWY.					
DALLAS WATER UTILITIES DEPT.					
CITY OF DALLAS, TEXAS					
DESIGN	DRAWN	DATE	SCALE	NOTES	FILE NO.
M. PEREZ	H. WATTS	JAN. '84	Hor. 1"=40' Vert. 1"=6'		685W660B