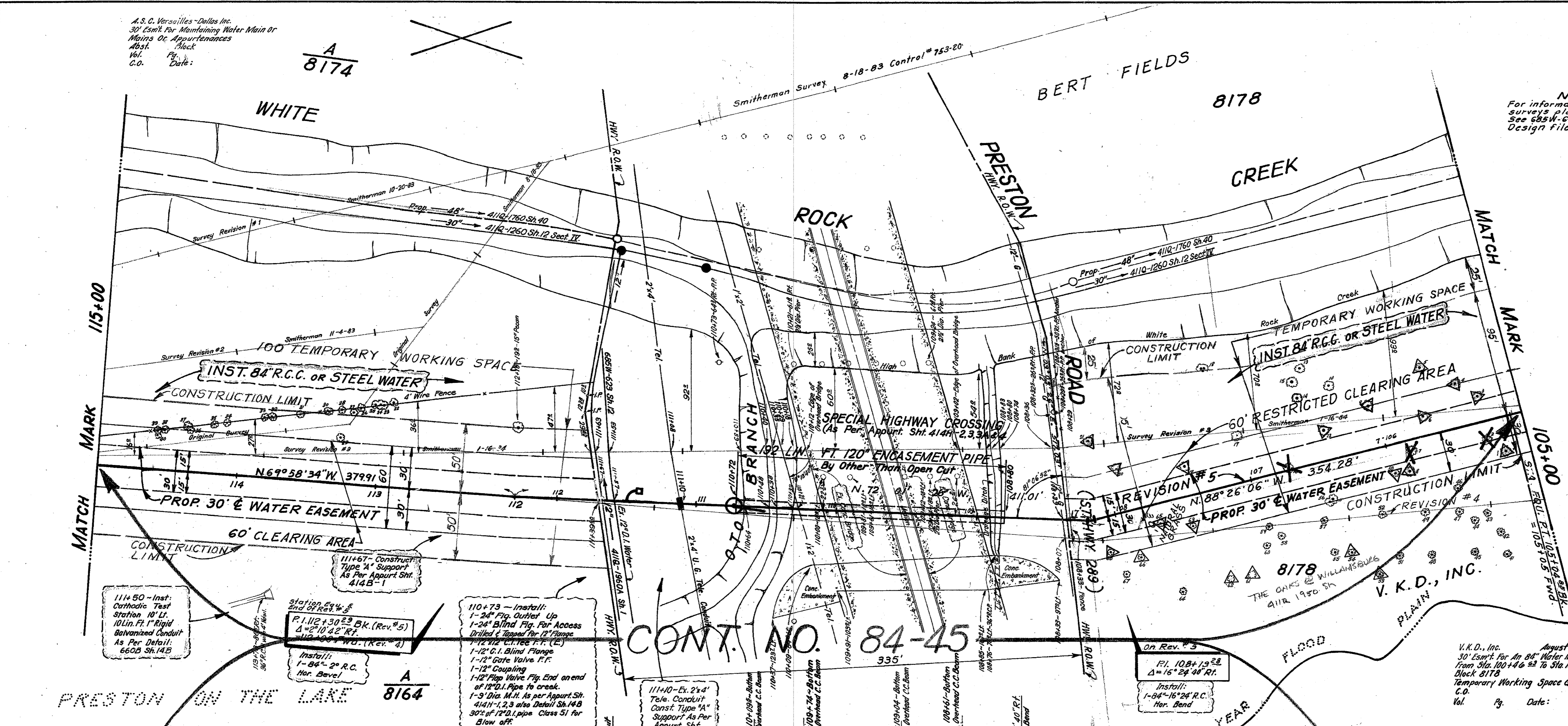


TREE LIST			
Station	LT	RT	Description
1	105+15	321	24" Oak
2	105+17	221	8" Elm
3	105+18	201	20" Oak
4	105+19	201	20" Elm
5	105+20	201	20" Elm
6	105+21	12	24" Oak
7	105+22	263	10" Elm
8	105+23	408	10" Elm
9	105+24	301	24" Oak
10	105+25	271	8" Elm
11	105+26	358	24" Oak
12	105+27	25	24" Oak
13	105+28	411	12" Elm
14	105+29	191	15" Elm
15	105+30	301	10" Elm
16	105+31	301	15" Elm
17	105+32	371	20" Elm
18	105+33	371	20" Elm
19	105+34	221	20" Elm
20	105+35	181	20" Pecan
21	105+36	31	20" Pecan
22	115+23	171	18" Oak
23	115+24	131	4" Hackberry
24	115+25	116	4" Hackberry
25	115+26	78	4" Hackberry
26	115+27	12	4" Hackberry
27	115+28	11	4" Elm
28	115+29	101	4" Hackberry
29	115+30	101	4" Hackberry
30	115+31	101	4" Elm
31	115+32	101	4" Hackberry
32	115+33	101	4" Hackberry
33	115+34	101	4" Hackberry
34	115+35	101	4" Elm
35	115+36	101	4" Hackberry
36	115+37	101	4" Hackberry
37	115+38	101	4" Hackberry
38	115+39	101	4" Hackberry
39	115+40	101	4" Hackberry
40	115+41	101	4" Hackberry
41	104+52	153	10" Hackberry
42	104+53	263	30" Elm
43	105+02	101	4" Elm
44	105+03	101	4" Elm
45	105+04	101	4" Elm
46	105+05	101	4" Elm
47	105+06	101	4" Elm
48	105+07	101	4" Elm
49	105+08	101	4" Elm
50	105+09	101	4" Elm
51	105+10	101	4" Elm
52	105+11	101	4" Elm
53	105+12	101	4" Elm
54	105+13	101	4" Elm
55	105+14	101	4" Elm
56	105+15	101	4" Elm
57	105+16	101	4" Elm
58	105+17	101	4" Elm
59	105+18	101	4" Elm
60	105+19	101	4" Elm
61	105+20	101	4" Elm
62	105+21	101	4" Elm
63	105+22	101	4" Elm
64	105+23	101	4" Elm
65	105+24	101	4" Elm
66	105+25	101	4" Elm
67	105+26	101	4" Elm
68	105+27	101	4" Elm
69	105+28	101	4" Elm
70	105+29	101	4" Elm
71	105+30	101	4" Elm
72	105+31	101	4" Elm
73	105+32	101	4" Elm
74	105+33	101	4" Elm
75	105+34	101	4" Elm
76	105+35	101	4" Elm
77	105+36	101	4" Elm
78	105+37	101	4" Elm
79	105+38	101	4" Elm
80	105+39	101	4" Elm
81	105+40	101	4" Elm
82	105+41	101	4" Elm
83	105+42	101	4" Elm
84	105+43	101	4" Elm
85	105+44	101	4" Elm
86	105+45	101	4" Elm
87	105+46	101	4" Elm
88	105+47	101	4" Elm
89	105+48	101	4" Elm
90	105+49	101	4" Elm
91	105+50	101	4" Elm
92	105+51	101	4" Elm
93	105+52	101	4" Elm
94	105+53	101	4" Elm
95	105+54	101	4" Elm
96	105+55	101	4" Elm
97	105+56	101	4" Elm
98	105+57	101	4" Elm
99	105+58	101	4" Elm
100	105+59	101	4" Elm
101	105+60	101	4" Elm
102	105+61	101	4" Elm
103	105+62	101	4" Elm
104	105+63	101	4" Elm
105	105+64	101	4" Elm
106	105+65	101	4" Elm
107	105+66	101	4" Elm
108	105+67	101	4" Elm
109	105+68	101	4" Elm
110	105+69	101	4" Elm
111	105+70	101	4" Elm
112	105+71	101	4" Elm
113	105+72	101	4" Elm
114	105+73	101	4" Elm
115	105+74	101	4" Elm
116	105+75	101	4" Elm
117	105+76	101	4" Elm
118	105+77	101	4" Elm
119	105+78	101	4" Elm
120	105+79	101	4" Elm
121	105+80	101	4" Elm
122	105+81	101	4" Elm
123	105+82	101	4" Elm
124	105+83	101	4" Elm
125	105+84	101	4" Elm
126	105+85	101	4" Elm
127	105+86	101	4" Elm
128	105+87	101	4" Elm
129	105+88	101	4" Elm
130	105+89	101	4" Elm
131	105+90	101	4" Elm
132	105+91	101	4" Elm
133	105+92	101	4" Elm
134	105+93	101	4" Elm
135	105+94	101	4" Elm
136	105+95	101	4" Elm
137	105+96	101	4" Elm
138	105+97	101	4" Elm
139	105+98	101	4" Elm
140	105+99	101	4" Elm
141	106+00	101	4" Elm



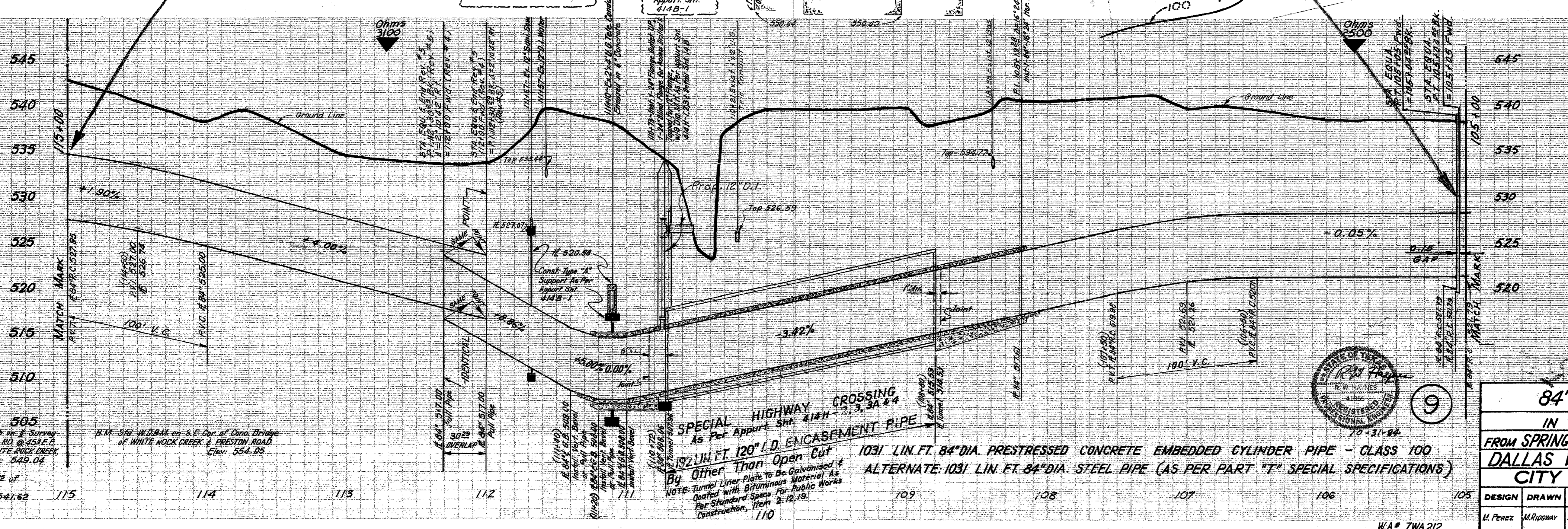
**NOTE:**  
For information on additional surveys plotted on this line, see 685W-660B folder in Water Design Files.

**STATE DEPARTMENT OF HIGHWAYS & PUBLIC TRANSPORTATION APPROVAL**  
For an 84" Water Main Within the R.O.W. of Preston Road State Highway 289 Contractor is to Contact James Simmons Telephone (214) 235-3314 at least 48 Hours Prior to Starting Construction in Order that they may have a Representative Present.  
Date: July 17, 1984. Expiration Date: January 17, 1985. Permit # 704079 Control 31 Section 6.

**TREE LEGEND**  
Trees Saved or Removed Along 60' Restricted Clearing Area. Sta. 105+00 to 108+10'

Removed - X	Saved - Δ
No. 2 - 6" Elm	No. 1 - 24" Oak
No. 7 - 10" Elm	No. 3 - 20" Oak
No. 16 - 15" Elm	No. 4 - 18" Elm
	No. 6 - 24" Ash
	No. 8 - 10" Elm
	No. 9 - 24" Ash
	No. 11 - 36" Sycamore Tree 36" Oak
	No. 12 - 20" Elm
	No. 15 - 20" Elm
	No. 20 - 20" Pecan
	No. 63 - 20" Pecan
	No. 65 - 20" Elm
	No. 68 - 10" Hackberry
	No. 5 - 20" Elm
	No. 21 - 20" Pecan
	No. 59 - 24" Oak
	No. 54 - 30" Oak
	No. 61 - 15" Elm
	No. 62 - 12" Ash
	No. 66 - 30" Oak

For Additional Information See D.W. Tree Specs.



**SEWER KEY MAP F-2**      **WATER MAP 8-24W**

**84" R.C. WATER MAIN**  
**IN CELESTIAL ROAD**  
**FROM SPRING VALLEY TO DALLAS N. PKWY.**  
**DALLAS WATER UTILITIES DEPT.**  
**CITY OF DALLAS, TEXAS**

DESIGN	DRAWN	DATE	SCALE	NOTES	FILE	NO.
M. Perez	M. Rogay	Feb. 1984	1/4" = 10'		685W 660B	